

Toyota City Flood Hazard Map

Asuke Junior high school district

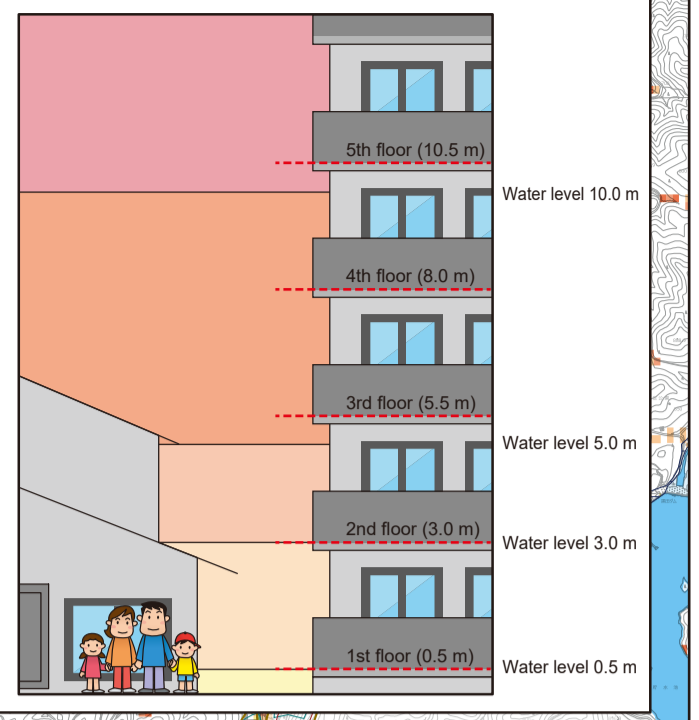
Take action to protect yourself!

Maximum expected flooding conditions

Rainfall so heavy it is estimated to occur only once every 1,000 years

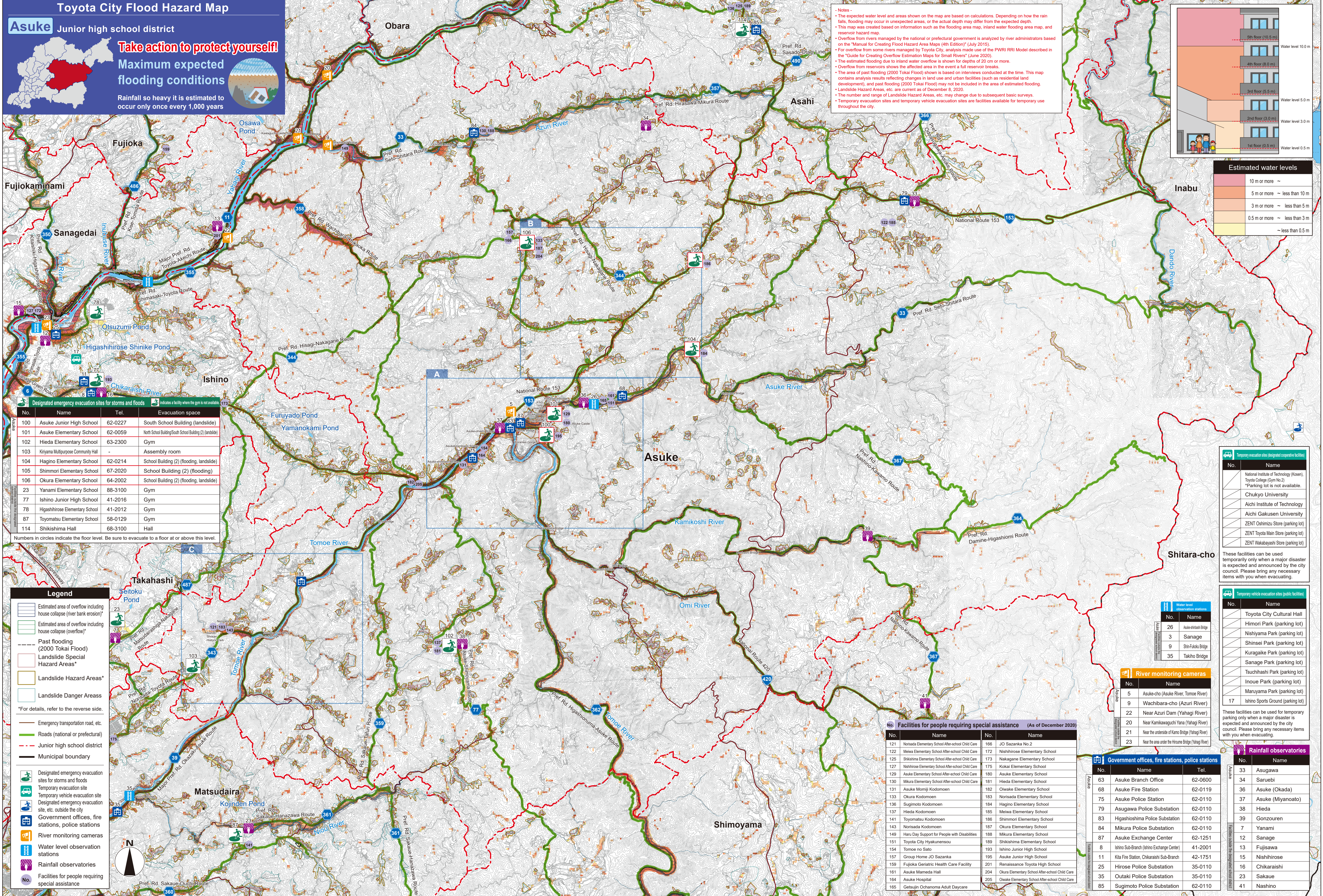


- Notes
- The expected water level and areas shown on the map are based on calculations. Depending on how the rain falls, flooding may occur in unexpected areas, or the actual depth may differ from the expected depth.
- This map was created based on information such as the flooding area map, inland water flooding area map, and reservoir hazard map.
- Overflow from rivers managed by the national or prefectural government is analyzed by river administrators based on the "Manual for Creating Flood Hazard Area Maps (4th Edition)" (July 2015).
- For overflow from some rivers managed by Toyota City, analysis made use of the PWRI RRI Model described in the "Guide for Creating Overflow Estimation Maps for Small Rivers" (June 2020).
- The estimated flooding due to inland water overflow is shown for depths of 20 cm or more.
- Overflow from reservoirs shows the affected area in the event a full reservoir breaks.
- The area of past flooding (2000 Tokai Flood) shown is based on interviews conducted at the time. This map contains analysis results reflecting changes in land use and urban facilities (such as residential land development), and past flooding (2000 Tokai Flood) may not be included in the area of estimated flooding.
- Landslide Hazard Areas, etc. are current as of December 8, 2020.
- The number and range of Landslide Hazard Areas, etc. may change due to subsequent basic surveys.
- Temporary evacuation sites and temporary vehicle evacuation sites are facilities available for temporary use throughout the city.



Estimated water levels

10 m or more	~
5 m or more	~ less than 10 m
3 m or more	~ less than 5 m
0.5 m or more	~ less than 3 m
~	less than 0.5 m



Designated emergency evacuation sites for storms and floods

No.	Name	Tel.	Evacuation space
100	Asuke Junior High School	62-0227	South School Building (landslide)
101	Asuke Elementary School	62-0059	North School Building/South School Building (2) (landslide)
102	Hieda Elementary School	63-2300	Gym
103	Kiryama Multipurpose Community Hall	-	Assembly room
104	Hagino Elementary School	62-0214	School Building (2) (flooding, landslide)
105	Shimori Elementary School	67-2020	School Building (2) (flooding)
106	Okura Elementary School	64-2002	School Building (2) (flooding, landslide)
23	Yanami Elementary School	88-3100	Gym
77	Ishino Junior High School	41-2016	Gym
78	Higashirose Elementary School	41-2012	Gym
87	Toyomatsu Elementary School	58-0129	Gym
114	Shikishima Hall	68-3100	Hall

Numbers in circles indicate the floor level. Be sure to evacuate to a floor at or above this level.

Legend

- Estimated area of overflow including house collapse (river bank erosion)*
- Estimated area of overflow including house collapse (overflow)*
- Past flooding (2000 Tokai Flood)
- Landslide Special Hazard Areas*
- Landslide Hazard Areas*
- Landslide Danger Areas
- *For details, refer to the reverse side.
- Emergency transportation road, etc.
- Roads (national or prefectural)
- Junior high school district
- Municipal boundary
- Designated emergency evacuation sites for storms and floods
- Temporary evacuation site
- Temporary vehicle evacuation site
- Designated emergency evacuation site, etc. outside the city
- Government offices, fire stations, police stations
- River monitoring cameras
- Water level observation stations
- Rainfall observatories
- Facilities for people requiring special assistance

Temporary evacuation sites (designated cooperative facilities)

No.	Name
	National Institute of Technology (Kosen)
	Toyota College (Gym No.2)
	*Parking lot is not available.
	Chukyo University
	Aichi Institute of Technology
	Aichi Gakusen University
	ZENT Oshimizu Store (parking lot)
	ZENT Toyota Main Store (parking lot)
	ZENT Wakabayashi Store (parking lot)

These facilities can be used temporarily only when a major disaster is expected and announced by the city council. Please bring any necessary items with you when evacuating.

Temporary vehicle evacuation sites (public facilities)

No.	Name
	Toyota City Cultural Hall
	Himori Park (parking lot)
	Nishiyama Park (parking lot)
	Shinsei Park (parking lot)
	Kuragaike Park (parking lot)
	Sanage Park (parking lot)
	Tsuehishi Park (parking lot)
	Inoue Park (parking lot)
	Maruyama Park (parking lot)
	Ishino Sports Ground (parking lot)

These facilities can be used for temporary parking only when a major disaster is expected and announced by the city council. Please bring any necessary items with you when evacuating.

Water level observation stations

No.	Name
26	Asuke-damashi Bridge
3	Sanage
9	Shir-Fukoku Bridge
35	Takho Bridge

River monitoring cameras

No.	Name
5	Asuke-cho (Asuke River, Tomoe River)
9	Wachibara-cho (Azumi River)
22	Near Azumi Dam (Yahagi River)
20	Near Kamikawaguchi Yama (Yahagi River)
21	Near the underside of Kamo Bridge (Yahagi River)
23	Near the area under the Housome Bridge (Yahagi River)

Facilities for people requiring special assistance (As of December 2020)

No.	Name	No.	Name
121	Noraida Elementary School After-school Child Care	166	JO Sazanka No.2
122	Meiwa Elementary School After-school Child Care	172	Nishirose Elementary School
123	Shikishima Elementary School After-school Child Care	173	Nakagane Elementary School
127	Nishirose Elementary School After-school Child Care	175	Kokai Elementary School
129	Asuke Elementary School After-school Child Care	180	Asuke Elementary School
130	Mikura Elementary School After-school Child Care	181	Hieda Elementary School
131	Asuke Momiji Kodomoen	182	Oiwake Elementary School
133	Okura Kodomoen	183	Norisada Elementary School
136	Sugimoto Kodomoen	184	Hagino Elementary School
137	Hieda Kodomoen	185	Meiwa Elementary School
141	Toyomatsu Kodomoen	186	Shimori Elementary School
143	Norisada Kodomoen	187	Okura Elementary School
149	Haru Day Support for People with Disabilities	188	Mikura Elementary School
151	Toyota City Hyakunensou	189	Shikishima Elementary School
154	Tomoe no Sato	193	Ishino Junior High School
157	Group Home JO Sazanka	195	Asuke Junior High School
159	Fujioaka Geriatric Health Care Facility	201	Renaissance Toyota High School
161	Asuke Mameda Hall	204	Okura Elementary School After-school Child Care
164	Asuke Hospital	205	Oiwake Elementary School After-school Child Care
165	Getsumi Ochanoma Adult Daycare		

Government offices, fire stations, police stations

No.	Name	Tel.
63	Asuke Branch Office	62-0600
68	Asuke Fire Station	62-0119
75	Asuke Police Station	62-0110
79	Asugawa Police Substation	62-0110
83	Higashirose Police Substation	62-0110
84	Mikura Police Substation	62-0110
87	Asuke Exchange Center	62-1251
8	Ishino Sub-Branch (Ishino Exchange Center)	41-2001
11	Kita Fire Station, Chikarashi Sub-Branch	42-1751
25	Hirose Police Substation	35-0110
35	Ohtaki Police Substation	35-0110
85	Sugimoto Police Substation	62-0110

Rainfall observatories

No.	Name
33	Asugawa
34	Saruebi
36	Asuke (Okada)
37	Asuke (Miyanoato)
38	Hieda
39	Gonzouren
7	Yanami
12	Sanage
13	Fujisawa
15	Nishirose
16	Chikarashi
23	Sakaue
41	Nashino