

Toyota City Flood Hazard Map

Inabu Junior high school district

Take action to protect yourself!

Maximum expected flooding conditions

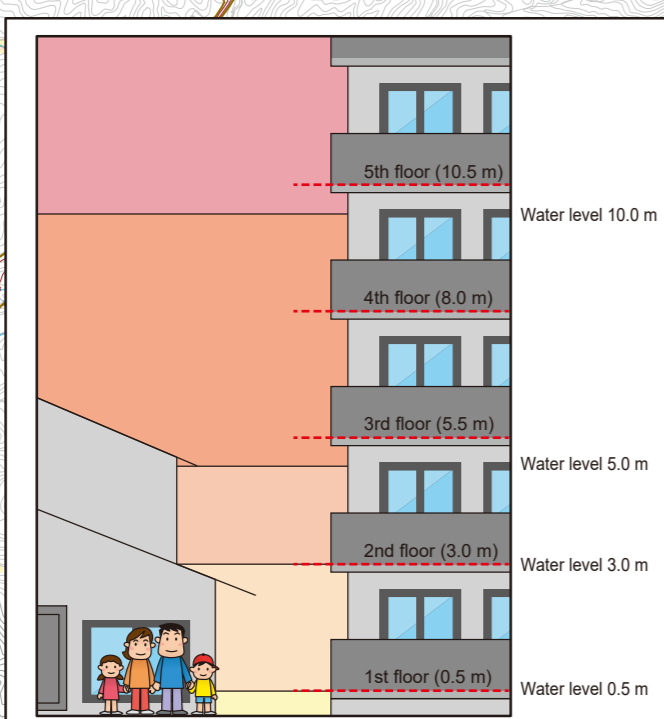
Rainfall so heavy it is estimated to occur only once every 1,000 years



- Notes -
- The expected water level and areas shown on the map are based on calculations. Depending on how the rain falls, flooding may occur in unexpected areas, or the actual depth may differ from the expected depth.
- This map was created based on information such as the flooding area map, inland water flooding area map, and reservoir hazard map.
- Overflow from rivers managed by the national or prefectural government is analyzed by river administrators based on the "Manual for Creating Flood Hazard Area Maps (4th Edition)" (July 2015).
- For overflow from some rivers managed by Toyota City, analysis made use of the PWRI RRI Model described in the "Guide for Creating Overflow Estimation Maps for Small Rivers" (June 2020).
- The estimated flooding due to inland water overflow is shown for depths of 20 cm or more.
- Overflow from reservoirs shows the affected area in the event a full reservoir breaks.
- The area of past flooding (2000 Tokai Flood) shown is based on interviews conducted at the time. This map contains analysis results reflecting changes in land use and urban facilities (such as residential land development), and past flooding (2000 Tokai Flood) may not be included in the area of estimated flooding.
- Landslide Hazard Areas, etc. are current as of December 8, 2020.
- The number and range of Landslide Hazard Areas, etc. may change due to subsequent basic surveys.
- Temporary evacuation sites and temporary vehicle evacuation sites are facilities available for temporary use throughout the city.

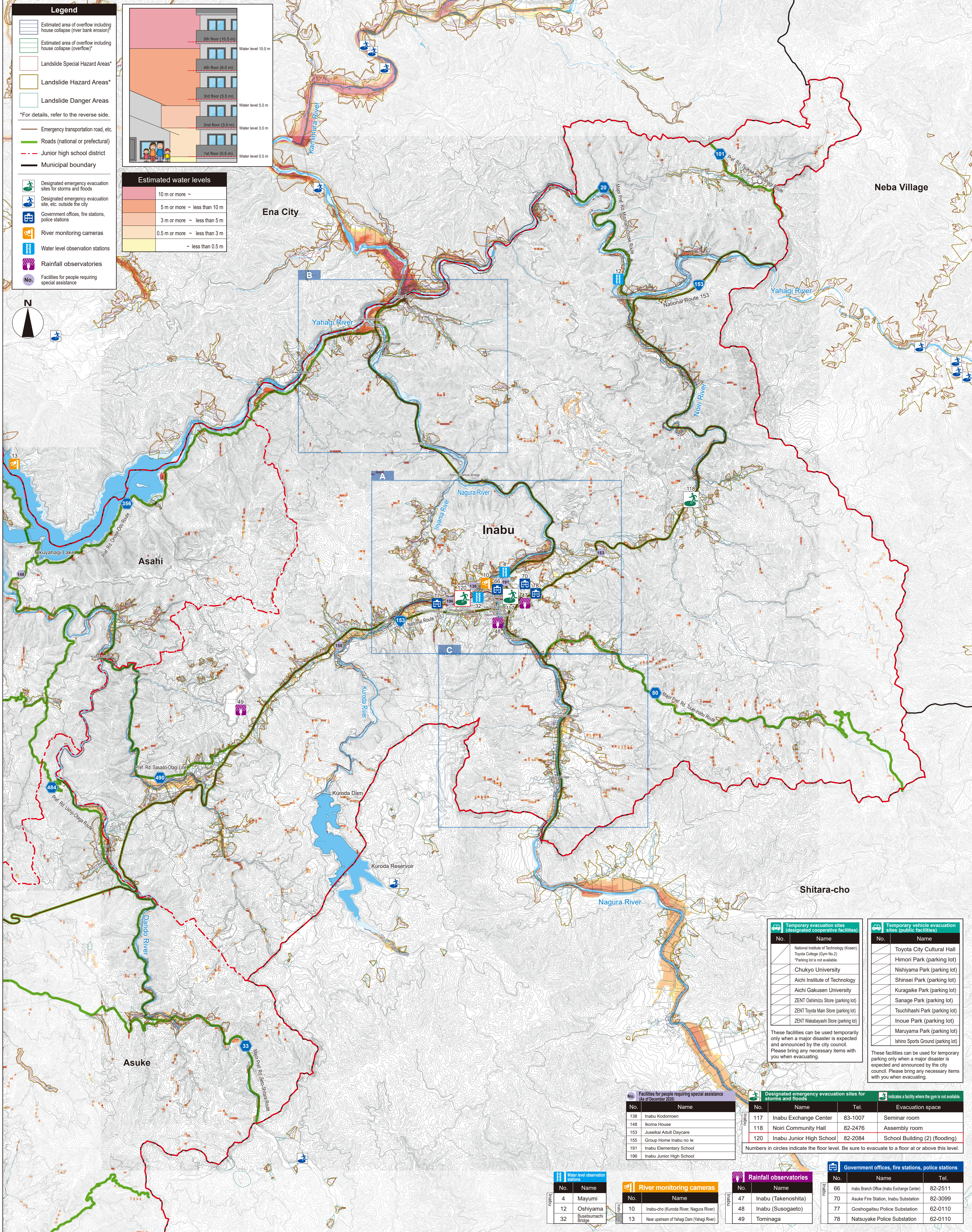
Legend

- Estimated area of overflow including house collapse (river bank erosion)*
- Estimated area of overflow including house collapse (overflow)*
- Landslide Special Hazard Areas*
- Landslide Hazard Areas*
- Landslide Danger Areas
- *For details, refer to the reverse side.
- Emergency transportation road, etc.
- Roads (national or prefectural)
- Junior high school district
- Municipal boundary
- Designated emergency evacuation sites for storms and floods
- Designated emergency evacuation site, etc. outside the city
- Government offices, fire stations, police stations
- River monitoring cameras
- Water level observation stations
- Rainfall observatories
- Facilities for people requiring special assistance



Estimated water levels

10 m or more ~
5 m or more ~ less than 10 m
3 m or more ~ less than 5 m
0.5 m or more ~ less than 3 m
~ less than 0.5 m



Temporary evacuation sites (designated cooperative facilities)

No.	Name
	National Institute of Technology (Kosen), Toyota College (Gym No.2) *Parking lot is not available.
	Chukyo University
	Aichi Institute of Technology
	Aichi Gakusen University
	ZENT Oshimizu Store (parking lot)
	ZENT Toyota Main Store (parking lot)
	ZENT Wakabayashi Store (parking lot)

These facilities can be used temporarily only when a major disaster is expected and announced by the city council. Please bring any necessary items with you when evacuating.

Temporary vehicle evacuation sites (public facilities)

No.	Name
	Toyota City Cultural Hall
	Himori Park (parking lot)
	Nishiyama Park (parking lot)
	Kuragaike Park (parking lot)
	Shinsei Park (parking lot)
	Sanage Park (parking lot)
	Tsuchihashi Park (parking lot)
	Inouue Park (parking lot)
	Maruyama Park (parking lot)
	Ishino Sports Ground (parking lot)

These facilities can be used for temporary parking only when a major disaster is expected and announced by the city council. Please bring any necessary items with you when evacuating.

Facilities for people requiring special assistance (as of December 2020)

No.	Name
138	Inabu Kodomoen
148	Ikoma House
153	Juseikai Adult Daycare
155	Group Home Inabu no Ie
191	Inabu Elementary School
196	Inabu Junior High School

Designated emergency evacuation sites for storms and floods

No.	Name	Tel.	Evacuation space
117	Inabu Exchange Center	83-1007	Seminar room
118	Noiri Community Hall	82-2476	Assembly room
120	Inabu Junior High School	82-2084	School Building (2) (flooding)

Numbers in circles indicate the floor level. Be sure to evacuate to a floor at or above this level.

Water level observation stations

No.	Name
4	Mayumi
12	Oshiyama
32	Saotsumachi Bridge

River monitoring cameras

No.	Name
10	Inabu-cho (Kuroda River, Nagura River)
13	Near upstream of Yahagi Dam (Yahagi River)

Rainfall observatories

No.	Name
47	Inabu (Takenoshita)
48	Inabu (Susogaeto)
49	Tominaga

Government offices, fire stations, police stations

No.	Name	Tel.
66	Inabu Branch Office (Inabu Exchange Center)	82-2511
70	Asuke Fire Station, Inabu Substation	82-3099
77	Goshogaitsu Police Substation	62-0110
78	Natsuyake Police Substation	62-0110