

Toyota City Flood Hazard Map

Shimoyama Junior high school district

Take action to protect yourself!

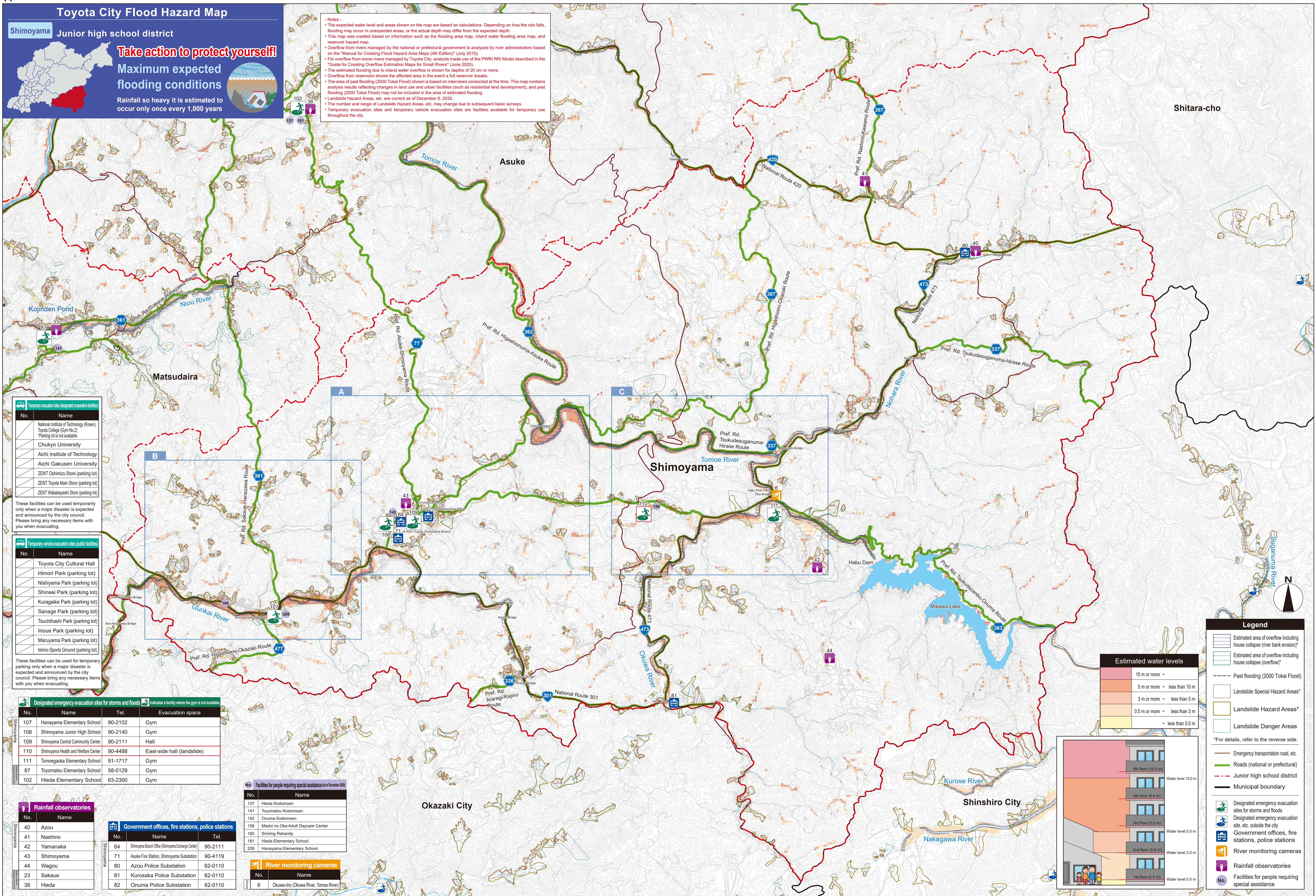
Maximum expected flooding conditions

Rainfall so heavy it is estimated to occur only once every 1,000 years



Notes

- The expected water level and areas shown on the map are based on calculations. Depending on how the rain falls, flooding may occur in unexpected areas, or the actual depth may differ from the expected depth.
- This map was created based on information such as the flooding area map, inland water flooding area map, and reservoir hazard map.
- Overflow from rivers managed by the national or prefectural government is analyzed by river administrators based on the "Manual for Creating Flood Hazard Area Maps (4th Edition)" (July 2015).
- For overflow from some rivers managed by Toyota City, analysis made use of the PWR1 RRI Model described in the "Guide for Creating Overflow Estimation Maps for Small Rivers" (June 2020).
- The estimated flooding due to inland water overflow is shown for depths of 20 cm or more.
- Overflow from reservoirs shows the affected areas in the event of a full reservoir break.
- The area of past flooding (2000 Tokai Flood) shown is based on interviews conducted at the time. This map contains analysis results reflecting changes in land use and urban facilities (such as residential land development, and past flooding (2000 Tokai Flood) may not be included in the area of estimated flooding.
- Landslide Hazard Areas, etc. are current as of December 8, 2020.
- The number and range of Landslide Hazard Areas, etc. may change due to subsequent basic surveys.
- Temporary evacuation sites and temporary vehicle evacuation sites are facilities available for temporary use throughout the city.



Temporary evacuation sites (designated cooperative facilities)

No.	Name
102	National Institute of Technology (Kosen), Toyota College (Gym No.3) *Parking lot is not available.
137	Chukyo University
141	Aichi Institute of Technology
142	Aichi Gakusen University
143	ZENT Oshimizu Store (parking lot)
144	ZENT Toyota Main Store (parking lot)
145	ZENT Wakabayashi Store (parking lot)

These facilities can be used temporarily only when a major disaster is expected and announced by the city council. Please bring any necessary items with you when evacuating.

Temporary vehicle evacuation sites (public facilities)

No.	Name
107	Toyota City Cultural Hall
108	Himori Park (parking lot)
109	Nishiyama Park (parking lot)
110	Shinsei Park (parking lot)
111	Kuragaike Park (parking lot)
112	Sanage Park (parking lot)
113	Tsuchihashi Park (parking lot)
114	Inoue Park (parking lot)
115	Manuyama Park (parking lot)
116	Ishino Sports Ground (parking lot)

These facilities can be used for temporary parking only when a major disaster is expected and announced by the city council. Please bring any necessary items with you when evacuating.

Designated emergency evacuation sites for storms and floods

No.	Name	Tel.	Evacuation space
107	Hanayama Elementary School	90-2102	Gym
108	Shimoyama Junior High School	90-2140	Gym
109	Shimoyama Central Community Center	90-2111	Hall
110	Shimoyama Health and Welfare Center	90-4488	East-side hall (landslide)
111	Tomoeoka Elementary School	91-1717	Gym
87	Toyomatsu Elementary School	58-0129	Gym
102	Hieda Elementary School	63-2300	Gym

Rainfall observatories

No.	Name
40	Azou
41	Nashino
42	Yamanaka
43	Shimoyama
44	Wagou
23	Sakau
38	Hieda

Government offices, fire stations, police stations

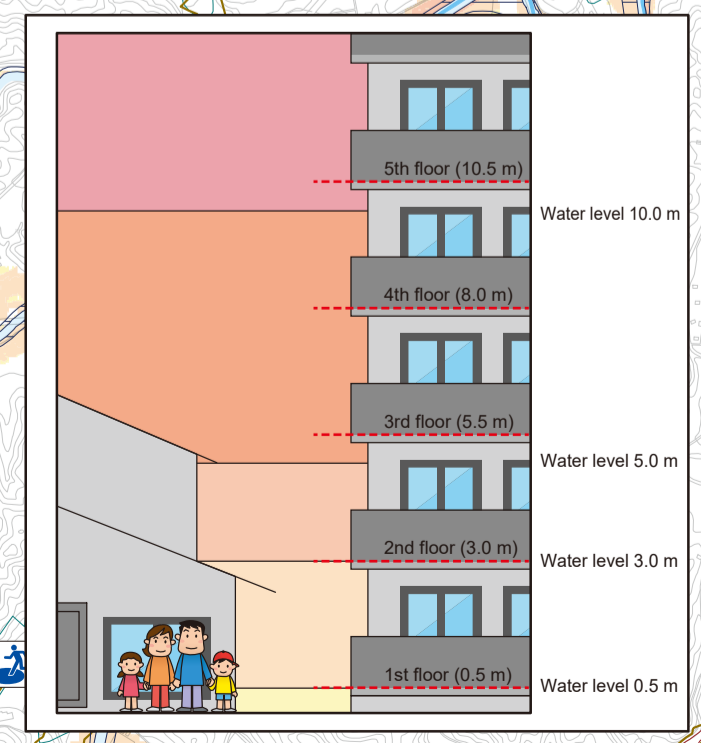
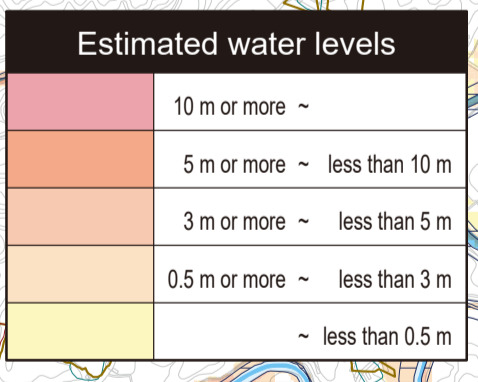
No.	Name	Tel.
64	Shimoyama Branch Office (Shimoyama Exchange Center)	90-2111
71	Asuke Fire Station, Shimoyama Substation	90-4119
80	Azou Police Substation	62-0110
81	Kurosaka Police Substation	62-0110
82	Onuma Police Substation	62-0110

Facilities for people requiring special assistance (as of December 2020)

No.	Name
137	Hieda Kodomoen
141	Toyomatsu Kodomoen
142	Onuma Kodomoen
156	Madoi no Oka Adult Daycare Center
160	Smiling Rehanity
181	Hieda Elementary School
209	Hanayama Elementary School

River monitoring cameras

No.	Name
6	Okawa-cho (Okawa River, Tomoe River)



Legend

- Estimated area of overflow including house collapse (river bank erosion)*
- Estimated area of overflow including house collapse (overflow)*
- Past flooding (2000 Tokai Flood)
- Landslide Special Hazard Areas*
- Landslide Hazard Areas*
- Landslide Danger Areas
- *For details, refer to the reverse side.
- Emergency transportation road, etc.
- Roads (national or prefectural)
- Junior high school district
- Municipal boundary
- Designated emergency evacuation sites for storms and floods
- Designated emergency evacuation site, etc. outside the city
- Government offices, fire stations, police stations
- River monitoring cameras
- Rainfall observatories
- Facilities for people requiring special assistance