

# Toyota City Flood Hazard Map

**Obara** Junior high school district

**Take action to protect yourself!**  
Maximum expected flooding conditions

Rainfall so heavy it is estimated to occur only once every 1,000 years



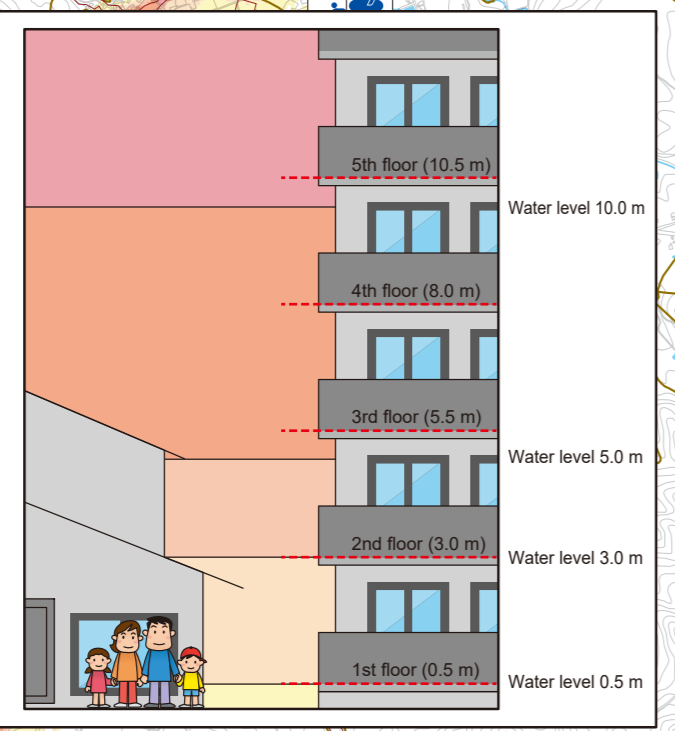
**Legend**

- Estimated area of overflow including house collapse (river bank erosion)\*
- Estimated area of overflow including house collapse (overflow)\*
- Landslide Special
- Hazard Areas\*
- Landslide Hazard Areas\*
- Landslide Danger Areas

\*For details, refer to the reverse side.

- Emergency transportation road, etc.
- Roads (national or prefectural)
- Junior high school district
- Municipal boundary

- Designated emergency evacuation sites for storms and floods
- Designated emergency evacuation site, etc. outside the city
- Government offices, fire stations, police stations
- River monitoring cameras
- Water level observation stations
- Rainfall observatories
- Facilities for people requiring special assistance



**Estimated water levels**

10 m or more	~
5 m or more	~ less than 10 m
3 m or more	~ less than 5 m
0.5 m or more	~ less than 3 m
	~ less than 0.5 m

**Facilities for people requiring special assistance (As of December 2021)**

No.	Name
126	Honjo Elementary School After-school Child Care
130	Mikura Elementary School After-school Child Care
134	Okusa Kodomoen
135	Mitsukuri Kodomoen
145	Kise Kodomoen
147	Hokuei Kodomoen
149	Haru Day Support for People with Disabilities
158	Obara Anyu Intensive Assisted Senior Living Facility
159	Fujoka Geriatric Health Care Facility
162	Obara Welfare Center Fukushima-no-Sato
163	Adult Daycare Fukushima-no-Sato
167	Group Home Hiyori
178	Mitsukuri Elementary School
179	Honjo Elementary School
188	Mikura Elementary School
197	Obara Junior High School
203	Mitsukuri Elementary School After-school Child Care

**Designated emergency evacuation sites for storms and floods**

No.	Name	Tel.	Evacuation space
95	Honjo Elementary School	65-2022	School Building (2) (landslide)
96	Obara Welfare Center	65-3350	Seminar room, assembly room
98	Obara-cho Workers' Training Center	-	Seminar room
99	Obara Exchange Center	65-3711	Fureai Hall
92	Mitsukuri Elementary School	76-2512	School Building (2) (landslide)
113	Sasado Hall	68-3971	Hall (landslide)

Numbers in circles indicate the floor level. Be sure to evacuate to a floor at or above this level.

**Rainfall observatories**

No.	Name
29	Kotoge
30	Douji
31	Obara
27	Kise Dam
34	Sarubei

**Government offices, fire stations, police stations**

No.	Name	Tel.
62	Obara Branch Office	65-2001
73	Ichiba Police Substation	35-0110
74	Osaka Police Substation	35-0110
67	Kita Fire Station, Fujoka-Obara Branch	76-5560
84	Mikura Police Substation	62-0110

**Temporary evacuation sites (designated cooperative facilities)**

No.	Name
	National Institute of Technology (Kosen), Toyota College (Dm No.2)
	*Parking lot is not available.
	Chukyo University
	Aichi Institute of Technology
	Aichi Gakusens University
	ZENT Oshimizu Store (parking lot)
	ZENT Toyota Main Store (parking lot)
	ZENT Wakabayashi Store (parking lot)

These facilities can be used temporarily only when a major disaster is expected and announced by the city council. Please bring any necessary items with you when evacuating.

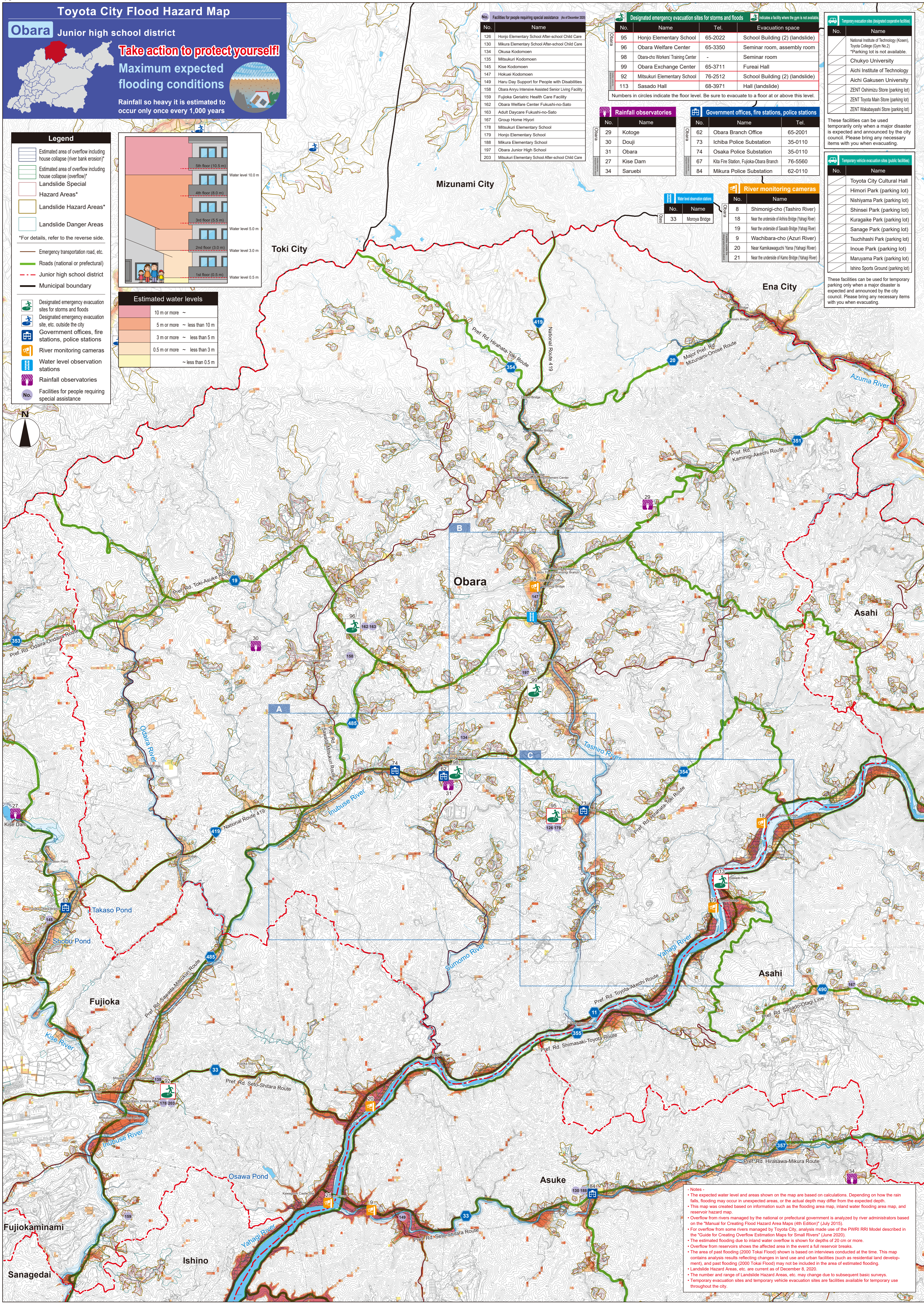
**Temporary vehicle evacuation sites (public facilities)**

No.	Name
	Toyota City Cultural Hall
	Himori Park (parking lot)
	Nishiyama Park (parking lot)
	Shinsei Park (parking lot)
	Kuragaike Park (parking lot)
	Sanage Park (parking lot)
	Tsushihashi Park (parking lot)
	Inoue Park (parking lot)
	Manuyama Park (parking lot)
	Ishino Sports Ground (parking lot)

These facilities can be used for temporary parking only when a major disaster is expected and announced by the city council. Please bring any necessary items with you when evacuating.

**River monitoring cameras**

No.	Name
8	Shimorigi-cho (Tashiro River)
18	Near the underside of Ahiwa Bridge (Yahagi River)
19	Near the underside of Sasado Bridge (Yahagi River)
9	Wachibara-cho (Azuri River)
20	Near Kamikawaguchi Yana (Yahagi River)
21	Near the underside of Kamo Bridge (Yahagi River)



**Notes**

- The expected water level and areas shown on the map are based on calculations. Depending on how the rain falls, flooding may occur in unexpected areas, or the actual depth may differ from the expected depth.
- This map was created based on information such as the flooding area map, inland water flooding area map, and reservoir hazard map.
- Overflow from rivers managed by the national or prefectural government is analyzed by river administrators based on the "Manual for Creating Flood Hazard Area Maps (4th Edition)" (July 2015).
- For overflow from some rivers managed by Toyota City, analysis made use of the PWRI RRI Model described in the "Guide for Creating Overflow Estimation Maps for Small Rivers" (June 2020).
- The estimated flooding due to inland water overflow is shown for depths of 20 cm or more.
- Overflow from reservoirs shows the affected area in the event a full reservoir breaks.
- The area of past flooding (2000 Tokai Flood) shown is based on interviews conducted at the time. This map contains analysis results reflecting changes in land use and urban facilities (such as residential land development), and past flooding (2000 Tokai Flood) may not be included in the area of estimated flooding.
- Landslide Hazard Areas, etc. are current as of December 8, 2020.
- The number and range of Landslide Hazard Areas, etc. may change due to subsequent basic surveys.
- Temporary evacuation sites and temporary vehicle evacuation sites are facilities available for temporary use throughout the city.