

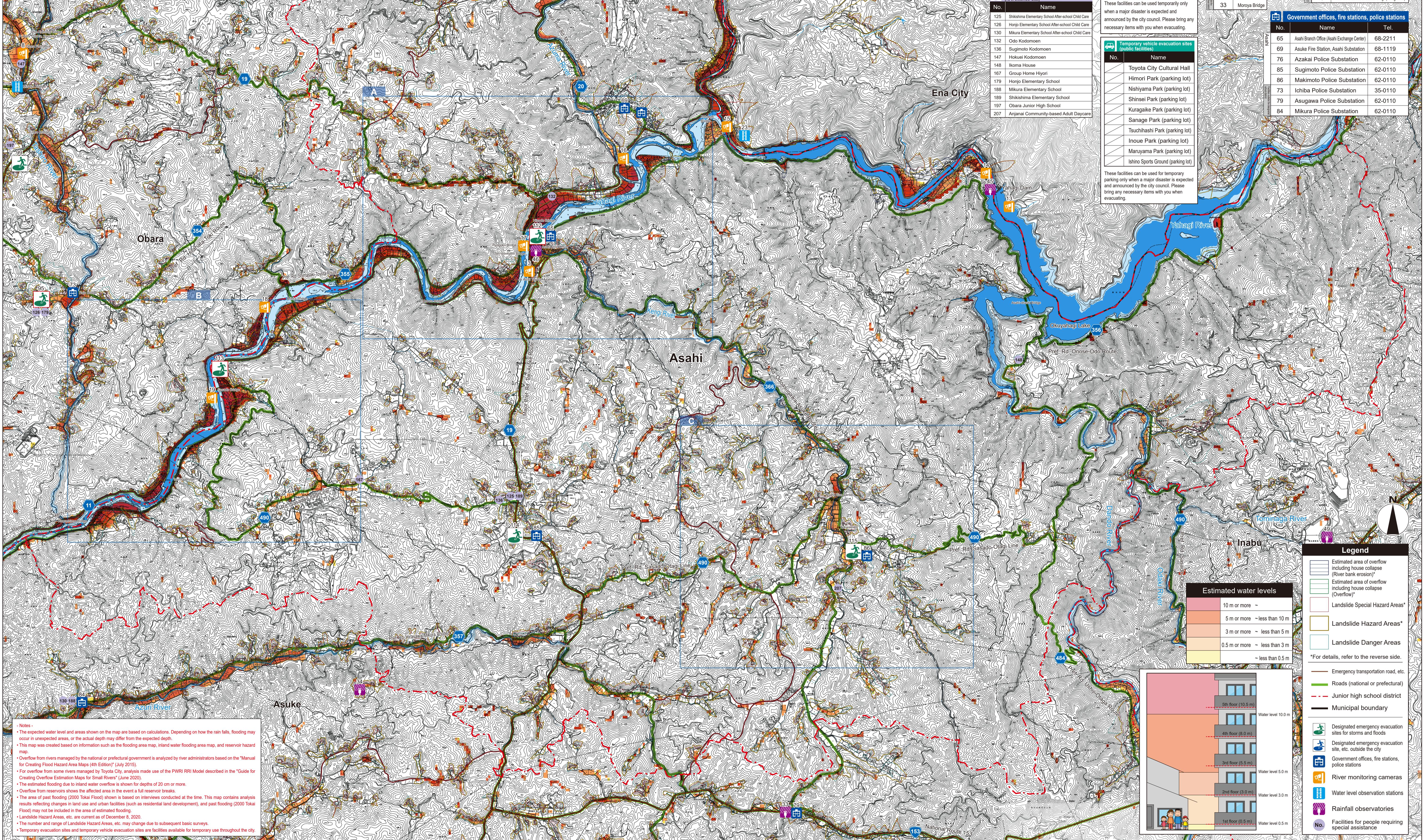
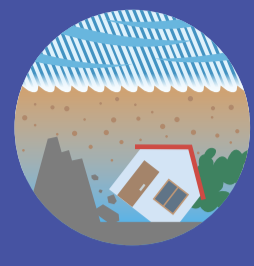
Toyota City Flood Hazard Map

Asahi Junior high school district

Take action to protect yourself!

Maximum expected flooding conditions

Rainfall so heavy it is estimated to occur only once every 1,000 years



Designated emergency evacuation sites for storms and floods			
No.	Name	Tel.	Evacuation space
112	Asahi Branch Office	68-2211	Government Building (2) (flooding, landslide)
113	Sasado Hall	68-3971	Hall (landslide)
114	Shikishima Hall	68-3100	Hall
115	Tsukuba Hall	68-2800	Hall
95	Honjo Elementary School	65-2022	School Building (2) (landslide)
99	Obara Exchange Center	65-3711	Fureai Hall

Numbers in circles indicate the floor level. Be sure to evacuate to a floor at or above this level.

Facilities for people requiring special assistance (As of December 2020)	
No.	Name
125	Shikishima Elementary School After-school Child Care
126	Honjo Elementary School After-school Child Care
130	Mikura Elementary School After-school Child Care
132	Odo Kodomoen
136	Sugimoto Kodomoen
147	Hokuei Kodomoen
148	Ikoma House
167	Group Home Hiyori
179	Honjo Elementary School
188	Mikura Elementary School
189	Shikishima Elementary School
197	Obara Junior High School
207	Anjanai Community-based Adult Daycare

Temporary evacuation sites (designated cooperative facilities)	
No.	Name
	National Institute of Technology (Kosen), Toyota College (Gym No.2) *Parking lot is not available.
	Chukyo University
	Aichi Institute of Technology
	Aichi Gakuen University
	ZENT Oshimizu Store (parking lot)
	ZENT Toyota Main Store (parking lot)
	ZENT Wakabayashi Store (parking lot)

These facilities can be used temporarily only when a major disaster is expected and announced by the city council. Please bring any necessary items with you when evacuating.

Temporary vehicle evacuation sites (public facilities)	
No.	Name
	Toyota City Cultural Hall
	Himori Park (parking lot)
	Nishiyama Park (parking lot)
	Shinsei Park (parking lot)
	Kuragaike Park (parking lot)
	Sanage Park (parking lot)
	Tsuhishashi Park (parking lot)
	Inoue Park (parking lot)
	Maruyama Park (parking lot)
	Ishino Sports Ground (parking lot)

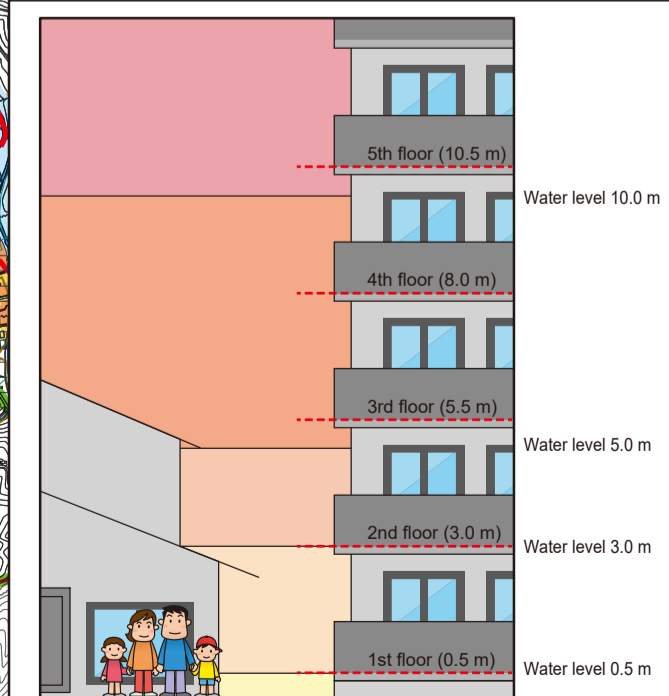
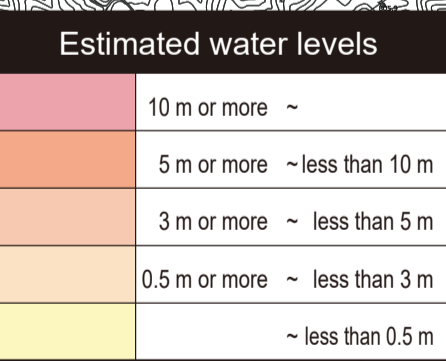
These facilities can be used for temporary parking only when a major disaster is expected and announced by the city council. Please bring any necessary items with you when evacuating.

Rainfall observatories	
No.	Name
45	Yahagi Dam
46	Asahi
33	Asugawa
34	Saruebi
49	Tomimaga

Water level observation stations	
No.	Name
23	Okuyahagi River
33	Moroya Bridge

River monitoring cameras	
No.	Name
3	Odo-cho (Yahagi River)
14	Near downstream of Yahagi Dam (Yahagi River)
16	Near Takase Revetment Park (Yahagi River)
17	Near the underpass of Hinode Bridge (Yahagi River)
8	Shimomigi-cho (Tashiro River)
13	Near upstream of Yahagi Dam (Yahagi River)
15	Near the underpass of Okuyahagi Bridge (Yahagi River)
18	Near the underpass of Aihira Bridge (Yahagi River)
19	Near the underpass of Saasado Bridge (Yahagi River)

Government offices, fire stations, police stations		
No.	Name	Tel.
65	Asahi Branch Office (Asahi Exchange Center)	68-2211
69	Asuke Fire Station, Asahi Substation	68-1119
76	Azakai Police Substation	62-0110
85	Sugimoto Police Substation	62-0110
86	Makimoto Police Substation	62-0110
73	Ichiba Police Substation	35-0110
79	Asugawa Police Substation	62-0110
84	Mikura Police Substation	62-0110



Legend

- Estimated area of overflow including house collapse (River bank erosion)
- Estimated area of overflow including house collapse (Overflow)
- Landslide Special Hazard Areas*
- Landslide Hazard Areas*
- Landslide Danger Areas
- *For details, refer to the reverse side.
- Emergency transportation road, etc.
- Roads (national or prefectural)
- Junior high school district
- Municipal boundary
- Designated emergency evacuation sites for storms and floods
- Designated emergency evacuation site, etc. outside the city
- Government offices, fire stations, police stations
- River monitoring cameras
- Water level observation stations
- Rainfall observatories
- Facilities for people requiring special assistance

Notes

- The expected water level and areas shown on the map are based on calculations. Depending on how the rain falls, flooding may occur in unexpected areas, or the actual depth may differ from the expected depth.
- This map was created based on information such as the flooding area map, inland water flooding area map, and reservoir hazard map.
- Overflow from rivers managed by the national or prefectural government is analyzed by river administrators based on the "Manual for Creating Flood Hazard Area Maps (4th Edition)" (July 2015).
- For overflow from some rivers managed by Toyota City, analysis made use of the PWRI RRI Model described in the "Guide for Creating Overflow Estimation Maps for Small Rivers" (June 2020).
- The estimated flooding due to inland water overflow is shown for depths of 20 cm or more.
- Overflow from reservoirs shows the affected area in the event of a full reservoir break.
- The area of past flooding (2000 Tokai Flood) shown is based on interviews conducted at the time. This map contains analysis results reflecting changes in land use and urban facilities (such as residential land development), and past flooding (2000 Tokai Flood) may not be included in the area of estimated flooding.
- Landslide Hazard Areas, etc. are current as of December 3, 2020.
- The number and range of Landslide Hazard Areas, etc. may change due to subsequent basic surveys.
- Temporary evacuation sites and temporary vehicle evacuation sites are facilities available for temporary use throughout the city.