

# Toyota City Flood Hazard Map

Matsudaira Junior high school district

**Take action to protect yourself!**

Maximum expected flooding conditions

Rainfall so heavy it is estimated to occur only once every 1,000 years



**Notes**

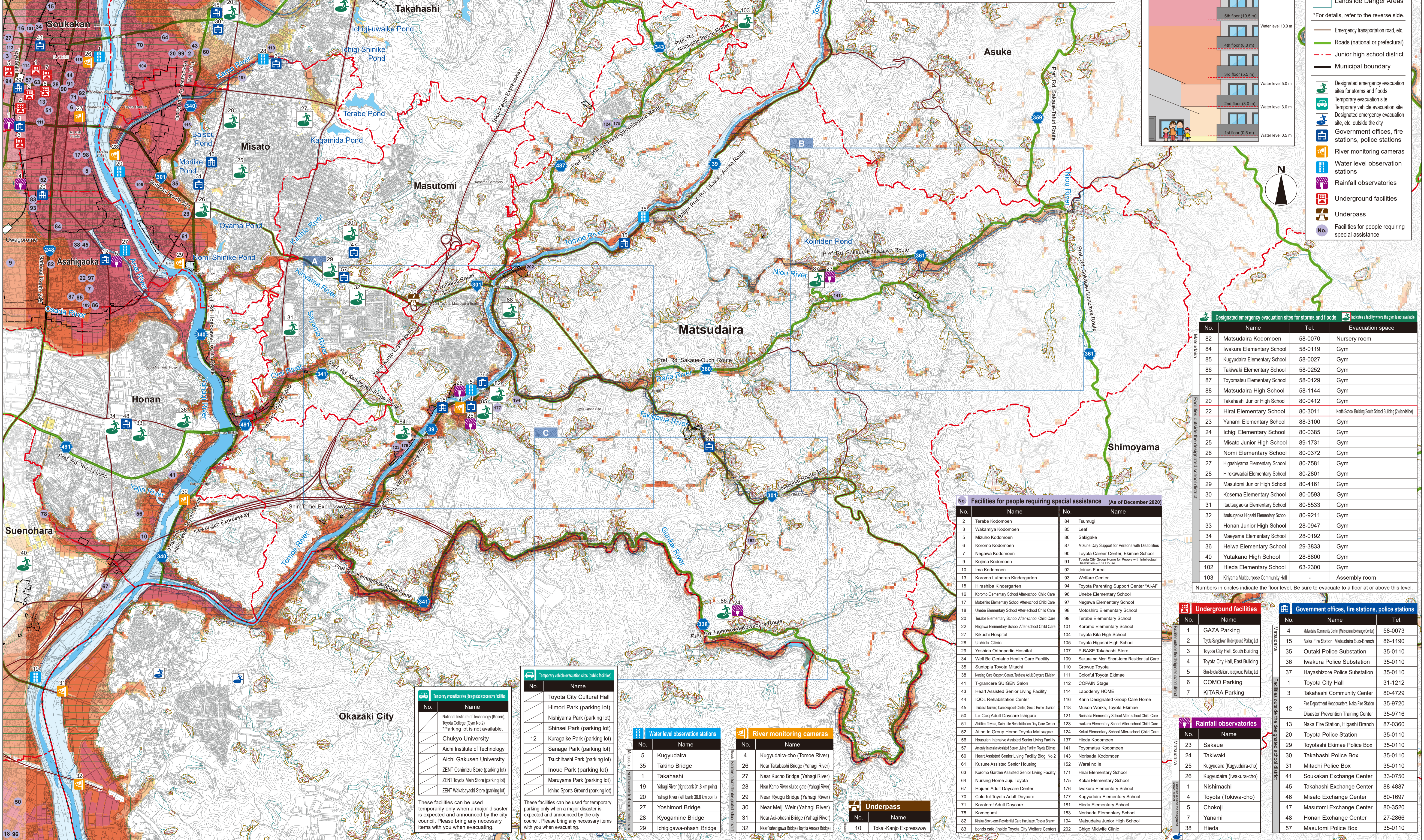
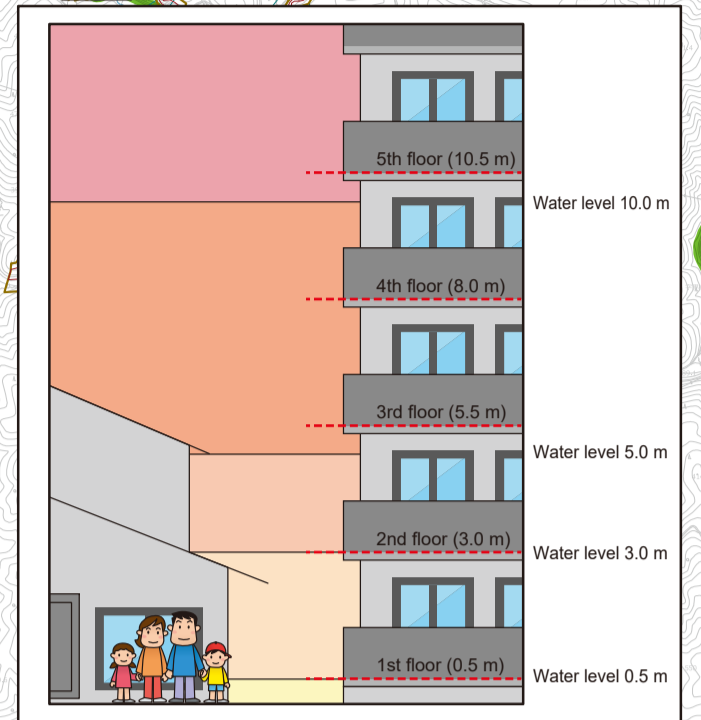
- The expected water level and areas shown on the map are based on calculations. Depending on how the rain falls, flooding may occur in unexpected areas, or the actual depth may differ from the expected depth.
- This map was created based on information such as the flooding area map, inland water flooding area map, and reservoir hazard map.
- Overflow from rivers managed by the national or prefectural government is analyzed by river administrators based on the "Manual for Creating Flood Hazard Area Maps (4th Edition)" (July 2015).
- For overflow from some rivers managed by Toyota City, analysis made use of the PWRI RRI Model described in the "Guide for Creating Overflow Estimation Maps for Small Rivers" (June 2020).
- The estimated flooding due to inland water overflow is shown for depths of 20 cm or more.
- Overflow from reservoirs shows the affected areas in the event of a full reservoir break.
- The area of past flooding (2000 Tokai Flood) shown is based on interviews conducted at the time. This map contains analysis results reflecting changes in land use and urban facilities (such as residential land development), and past flooding (2000 Tokai Flood) may not be included in the area of estimated flooding.
- Landslide Hazard Areas, etc. are current as of December 8, 2020.
- The number and range of Landslide Hazard Areas, etc. may change due to subsequent basic surveys.
- Temporary evacuation sites and temporary vehicle evacuation sites are facilities available for temporary use throughout the city.

**Estimated water levels**

10 m or more	~
5 m or more	~ less than 10 m
3 m or more	~ less than 5 m
0.5 m or more	~ less than 3 m
	~ less than 0.5 m

**Legend**

- Estimated area of overflow including house collapse (river bank erosion)
- Estimated area of overflow including house collapse (overflow)
- Past flooding (2000 Tokai Flood)
- Landslide Special Hazard Areas\*
- Landslide Hazard Areas\*
- Landslide Danger Areas
- \*For details, refer to the reverse side.
- Emergency transportation road, etc.
- Roads (national or prefectural)
- Junior high school district
- Municipal boundary
- Designated emergency evacuation sites for storms and floods
- Temporary evacuation site
- Temporary vehicle evacuation site
- Designated emergency evacuation site, etc. outside the city
- Government offices, fire stations, police stations
- River monitoring cameras
- Water level observation stations
- Rainfall observatories
- Underground facilities
- Underpass
- Facilities for people requiring special assistance



**Designated emergency evacuation sites for storms and floods**

No.	Name	Tel.	Evacuation space
82	Matsudaira Kodomoen	58-0070	Nursery room
84	Iwakura Elementary School	58-0119	Gym
85	Kugyudaira Elementary School	58-0027	Gym
86	Takikawa Elementary School	58-0252	Gym
87	Toyomatsu Elementary School	58-0129	Gym
88	Matsudaira High School	58-1144	Gym
20	Takahashi Junior High School	80-0412	Gym
22	Hirai Elementary School	80-3011	North School Building/South Building (2) (landside)
23	Yanami Elementary School	88-3100	Gym
24	Ichigi Elementary School	80-0385	Gym
25	Misato Junior High School	89-1731	Gym
26	Nomi Elementary School	80-0372	Gym
27	Higashiyama Elementary School	80-7581	Gym
28	Hirokawadai Elementary School	80-2801	Gym
29	Masutomi Junior High School	80-4161	Gym
30	Kosema Elementary School	80-0593	Gym
31	Itsutsugaoaka Elementary School	80-5533	Gym
32	Itsutsugaoaka Higashi Elementary School	80-9211	Gym
33	Honan Junior High School	28-0947	Gym
34	Maeyama Elementary School	28-0192	Gym
36	Heiwa Elementary School	29-3833	Gym
40	Yutakano High School	28-8800	Gym
102	Hieda Elementary School	63-2300	Gym
103	Kiryama Multipurpose Community Hall	-	Assembly room

Numbers in circles indicate the floor level. Be sure to evacuate to a floor at or above this level.

**Facilities for people requiring special assistance (As of December 2020)**

No.	Name	No.	Name
2	Terabe Kodomoen	84	Tsumugi
3	Wakamiya Kodomoen	85	Leaf
5	Mizuho Kodomoen	86	Sakigake
6	Koromo Kodomoen	87	Mizue Day Support for Persons with Disabilities
7	Negawa Kodomoen	90	Toyota Career Center, Ekimae School
9	Kojima Kodomoen	91	Toyota City Group Home for People with Intellectual Disabilities - Kita House
10	Ima Kodomoen	92	Joinsu Fureai
13	Koromo Lutheran Kindergarten	93	Welfare Center
15	Hirashiba Kindergarten	94	Toyota Parenting Support Center "Ai-Ai"
16	Koromo Elementary School After-school Child Care	96	Unebe Elementary School
17	Motoshiro Elementary School After-school Child Care	97	Negawa Elementary School
18	Unebe Elementary School After-school Child Care	98	Motoshiro Elementary School
20	Terabe Elementary School After-school Child Care	99	Terabe Elementary School
22	Negawa Elementary School After-school Child Care	101	Koromo Elementary School
27	Kikuchi Hospital	104	Toyota Kita High School
28	Uchida Clinic	105	Toyota Higashi High School
29	Yoshida Orthopedic Hospital	107	P-BASE Takahashi Store
34	Well Be Geriatric Health Care Facility	109	Sakura no Mori Short-term Residential Care
35	Suntoplia Toyota Milarchi	110	Groupo Toyota
38	Nanjo Car Support Center, Tsubasa Adult Daycare Division	111	Colorful Toyota Ekimae
41	T-granocore SUIGEN Salon	112	COPAIN Stage
43	Heart Assisted Senior Living Facility	114	Laboderm HOME
44	IQOL Rehabilitation Center	116	Karin Designated Group Care Home
45	Tsubasa Nursing Care Support Center, Group Home Division	118	Muson Works, Toyota Ekimae
50	Le Coc Adult Daycare Ishiguro	121	Norikida Elementary School After-school Child Care
51	Abilities Toyota Daily Life Rehabilitation Day Care Center	123	Iwakura Elementary School After-school Child Care
52	Ai no Ie Group Home Toyota Matsugae	124	Kokai Elementary School After-school Child Care
56	Housuen Intensive Assisted Senior Living Facility	137	Hieda Kodomoen
57	Anelity Intensive Assisted Senior Living Facility, Toyota Ekimae	141	Toyomatsu Kodomoen
60	Heart Assisted Senior Living Facility Bldg. No.2	143	Norisada Kodomoen
61	Kusune Assisted Senior Housing	152	Warai no Ie
63	Koromo Garden Assisted Senior Living Facility	171	Hirai Elementary School
64	Nursing Home Juju Toyota	175	Kokai Elementary School
67	Houjuen Adult Daycare Center	176	Iwakura Elementary School
70	Colorful Toyota Adult Daycare	177	Kugyudaira Elementary School
71	Kororoten Adult Daycare	181	Hieda Elementary School
78	Korogumi	183	Norisada Elementary School
82	Kiraku Short-term Residential Care Hanakawa, Toyota Branch	194	Matsudaira Junior High School
83	Chigo Midwife Clinic	202	Chigo Midwife Clinic

**Underground facilities**

No.	Name
1	GAZA Parking
2	Toyota Sanghaia Underground Parking Lot
3	Toyota City Hall, South Building
4	Toyota City Hall, East Building
5	Shin-Toyota Station Underground Parking Lot
6	COMO Parking
7	KITARA Parking

**Government offices, fire stations, police stations**

No.	Name	Tel.
4	Matsudaira Community Center (Matsudaira Exchange Center)	58-0073
15	Naka Fire Station, Matsudaira Sub-Branch	86-1190
35	Outaki Police Substation	35-0110
36	Iwakura Police Substation	35-0110
37	Hayashizora Police Substation	35-0110
1	Toyota City Hall	31-1212
3	Takahashi Community Center	80-4729
12	Fire Department Headquarters, Naka Fire Station	35-9720
13	Disaster Prevention Training Center	35-9716
13	Naka Fire Station, Higashi Branch	87-0360
20	Toyota Police Station	35-0110
29	Toyotachi Ekimae Police Box	35-0110
30	Takahashi Police Box	35-0110
31	Mitachi Police Box	35-0110
36	Kugyudaira (Iwakura-cho)	33-0750
45	Takahashi Exchange Center	88-4887
46	Misato Exchange Center	80-1697
47	Masutomi Exchange Center	80-3520
48	Honan Exchange Center	27-2866
57	Masutomi Police Box	35-0110

**Rainfall observatories**

No.	Name
23	Sakaue
24	Takikawa
25	Kugyudaira (Kugyudaira-cho)
26	Kugyudaira (Iwakura-cho)
1	Nishimachi
4	Toyota (Tokwa-cho)
5	Chokoji
7	Yanami
38	Hieda

**Temporary evacuation sites (designated cooperative facilities)**

No.	Name
	National Institute of Technology (Kosen), Toyota College (Gym No.2)
	*Parking lot is not available.
	Chukyo University
	Aichi Institute of Technology
	Aichi Gakusen University
	ZENT Oshimizu Store (parking lot)
	ZENT Toyota Main Store (parking lot)
	ZENT Wakabayashi Store (parking lot)

**Temporary vehicle evacuation sites (public facilities)**

No.	Name
	Toyota City Cultural Hall
	Himori Park (parking lot)
	Nishiyama Park (parking lot)
	Shinsei Park (parking lot)
12	Kuragaika Park (parking lot)
	Sanage Park (parking lot)
	Tsuchihashi Park (parking lot)
	Inoue Park (parking lot)
	Mariyama Park (parking lot)
	Ishino Sports Ground (parking lot)

**Water level observation stations**

No.	Name
5	Kugyudaira
35	Takiko Bridge
1	Takahashi
19	Yahagi River (right bank 31.8 km point)
20	Yahagi River (left bank 38.8 km point)
27	Yoshimori Bridge
28	Kyogamine Bridge
29	Ichigigawa-ohashi Bridge

**River monitoring cameras**

No.	Name
4	Kugyudaira-cho (Tomoe River)
26	Near Takabashi Bridge (Yahagi River)
27	Near Kucho Bridge (Yahagi River)
28	Near Kamo River sluice gate (Yahagi River)
29	Near Ryugu Bridge (Yahagi River)
30	Near Meiji Weir (Yahagi River)
31	Near Aoi-ohashi Bridge (Yahagi River)
32	Near Yahagigawa Bridge (Toyota Annoh Bridge)

**Underpass**

No.	Name
10	Tokai-Kanjo Expressway