

# Toyota City Flood Hazard Map

## Homi Junior high school district

### Take action to protect yourself!

#### Maximum expected flooding conditions

Rainfall so heavy it is estimated to occur only once every 1,000 years



- Notes
- The expected water level and areas shown on the map are based on calculations. Depending on how the rain falls, flooding may occur in unexpected areas, or the actual depth may differ from the expected depth.
- This map was created based on information such as the flooding area map, inland water flooding area map, and reservoir hazard map.
- Overflow from rivers managed by the national or prefectural government is analyzed by river administrators based on the "Manual for Creating Flood Hazard Area Maps (4th Edition)" (July 2015).
- For overflow from some rivers managed by Toyota City, analysis made use of the PWRI RRI Model described in the "Guide for Creating Overflow Estimation Maps for Small Rivers" (June 2020).
- The estimated flooding due to inland water overflow is shown for depths of 20 cm or more.
- Overflow from reservoirs shows the affected area in the event a full reservoir breaks.
- The area of past flooding (2000 Tokai Flood) shown is based on interviews conducted at the time. This map contains analysis results reflecting changes in land use and urban facilities (such as residential land development), and past flooding (2000 Tokai Flood) may not be included in the area of estimated flooding.
- Landslide Hazard Areas, etc. are current as of December 8, 2020.
- The number and range of Landslide Hazard Areas, etc. may change due to subsequent basic surveys.
- Temporary evacuation sites and temporary vehicle evacuation sites are facilities available for temporary use throughout the city.

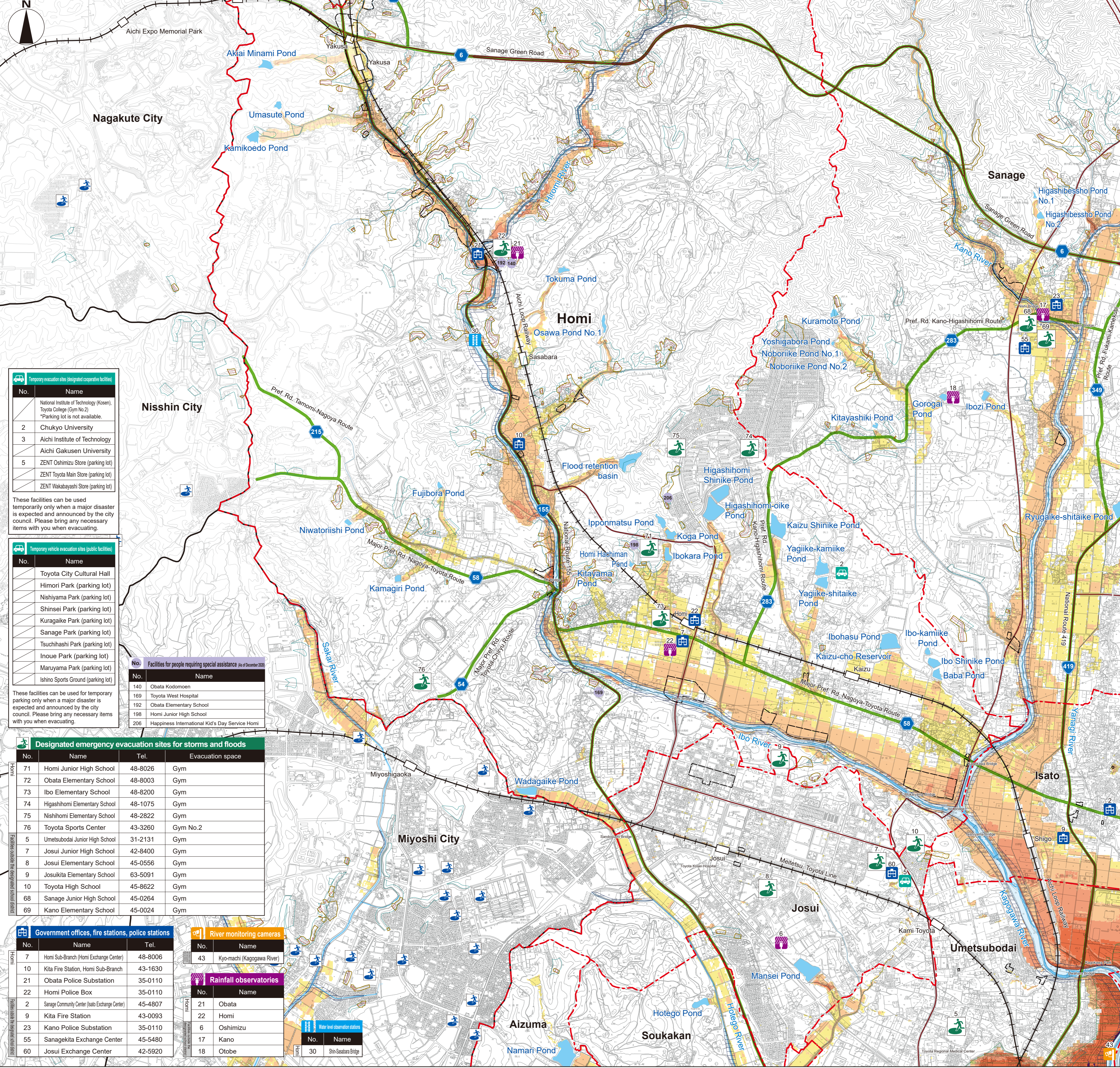
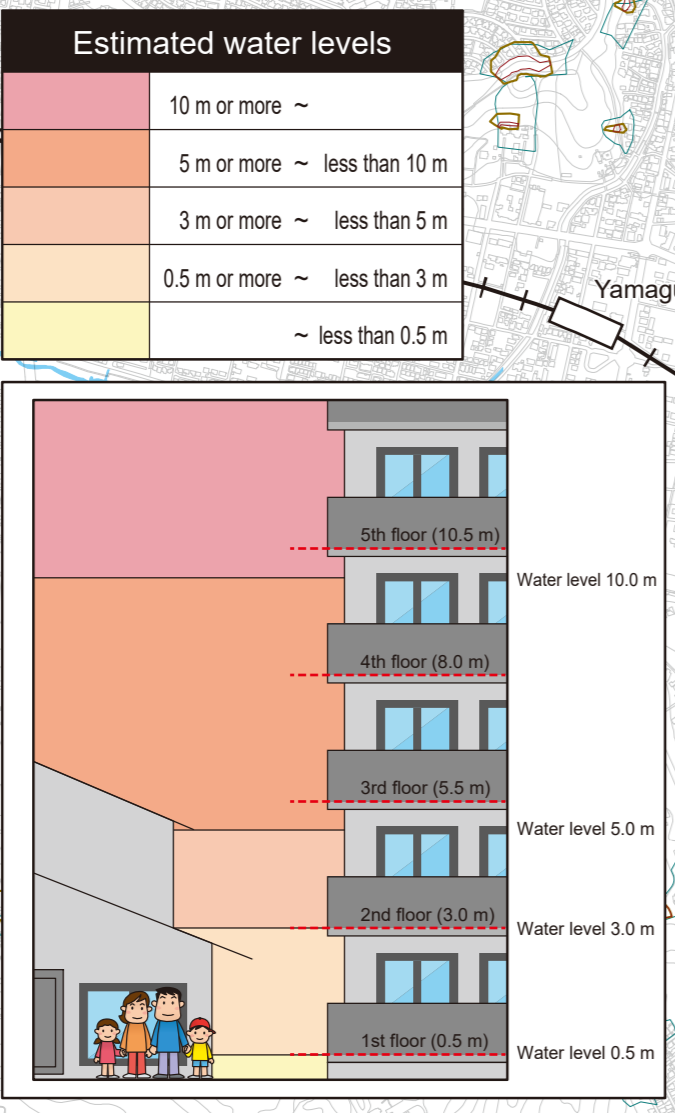
### Legend

- Estimated area of overflow including house collapse (river bank erosion)\*
- Estimated area of overflow including house collapse (overflow)\*
- Past flooding (2000 Tokai Flood)
- Landslide Special Hazard Areas\*
- Landslide Hazard Areas\*
- Landslide Danger Areas

\*For details, refer to the reverse side.

- Emergency transportation road, etc.
- Roads (national or prefectural)
- Junior high school district
- Municipal boundary

- Designated emergency evacuation sites for storms and floods
- Temporary evacuation site
- Temporary vehicle evacuation site
- Designated emergency evacuation site, etc. outside the city
- Government offices, fire stations, police stations
- Water level observation stations
- Rainfall observatories
- Facilities for people requiring special assistance



### Temporary evacuation sites (designated cooperative facilities)

No.	Name
1	National Institute of Technology (Kosen), Toyota College (Gym No.2) *Parking lot is not available.
2	Chukyo University
3	Aichi Institute of Technology Aichi Gakusen University
5	ZENT Oshimitzu Store (parking lot) ZENT Toyota Main Store (parking lot) ZENT Wakabayashi Store (parking lot)

These facilities can be used temporarily only when a major disaster is expected and announced by the city council. Please bring any necessary items with you when evacuating.

### Temporary vehicle evacuation sites (public facilities)

No.	Name
	Toyota City Cultural Hall
	Himori Park (parking lot)
	Nishiyama Park (parking lot)
	Shinsei Park (parking lot)
	Kuragaika Park (parking lot)
	Sanage Park (parking lot)
	Tsuhishashi Park (parking lot)
	Inoue Park (parking lot)
	Manuyama Park (parking lot)
	Ishino Sports Ground (parking lot)

These facilities can be used for temporary parking only when a major disaster is expected and announced by the city council. Please bring any necessary items with you when evacuating.

### Facilities for people requiring special assistance (as of December 2020)

No.	Name
140	Obata Kodomom
169	Toyota West Hospital
192	Obata Elementary School
198	Homi Junior High School
206	Happiness International Kid's Day Service Homi

### Designated emergency evacuation sites for storms and floods

No.	Name	Tel.	Evacuation space
71	Homi Junior High School	48-8026	Gym
72	Obata Elementary School	48-8003	Gym
73	Ibo Elementary School	48-8200	Gym
74	Higashihomi Elementary School	48-1075	Gym
75	Nishihomi Elementary School	48-2822	Gym
76	Toyota Sports Center	43-3260	Gym No.2
5	Umetsubodai Junior High School	31-2131	Gym
7	Josui Junior High School	42-8400	Gym
8	Josui Elementary School	45-0556	Gym
9	Josukita Elementary School	63-5091	Gym
10	Toyota High School	45-8622	Gym
68	Sanage Junior High School	45-0264	Gym
69	Kano Elementary School	45-0024	Gym

### Government offices, fire stations, police stations

No.	Name	Tel.
7	Homi Sub-Branch (Homi Exchange Center)	48-8006
10	Kita Fire Station, Homi Sub-Branch	43-1630
21	Obata Police Substation	35-0110
22	Homi Police Box	35-0110
2	Sanage Community Center (Isato Exchange Center)	45-4807
9	Kita Fire Station	43-0093
23	Kano Police Substation	35-0110
55	Sanagekita Exchange Center	45-5480
60	Josui Exchange Center	42-5920

### River monitoring cameras

No.	Name
43	Kyo-machi (Kagogawa River)

### Rainfall observatories

No.	Name
21	Obata
22	Homi
6	Oshimizu
17	Kano
18	Otobe

### Water level observation stations

No.	Name
30	Shin-Sabara Bridge

