

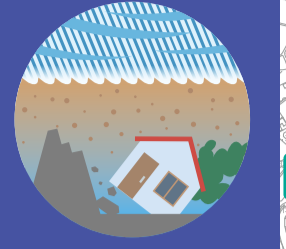
Toyota City Flood Hazard Map

Takahashi Junior high school district

Take action to protect yourself!

Maximum expected flooding conditions

Rainfall so heavy it is estimated to occur only once every 1,000 years



- Notes
- The expected water level and areas shown on the map are based on calculations. Depending on how the rain falls, flooding may occur in unexpected areas, or the actual depth may differ from the expected depth.
- This map was created based on information such as the flooding area map, inland water flooding area map, and reservoir hazard map.
- Overflow from rivers managed by the national or prefectural government is analyzed by river administrators based on the "Manual for Creating Flood Hazard Area Maps (4th Edition)" (July 2015).
- For overflow from some rivers managed by Toyota City, analysis made use of the PWRI RRI Model described in the "Guide for Creating Overflow Estimation Maps for Small Rivers" (June 2020).
- The estimated flooding due to inland water overflow is shown for depths of 20 cm or more.
- Overflow from reservoirs shows the affected area in the event of a full reservoir break.
- The area of past flooding (2000 Tokai Flood) shown is based on interviews conducted at the time. This map contains analysis results reflecting changes in land use and urban facilities (such as residential land development), and past flooding (2000 Tokai Flood) may not be included in the area of estimated flooding.
- Landslide Hazard Areas, etc. are current as of December 9, 2020.
- The number and range of Landslide Hazard Areas, etc. may change due to subsequent basic surveys.
- Temporary evacuation sites and temporary vehicle evacuation sites are facilities available for temporary use throughout the city.

No.	Name	Tel.	Evacuation space
20	Takahashi Junior High School	80-0412	Gym
22	Hirai Elementary School	80-3011	North School Building/ South School Building (2) (landside)
23	Yanami Elementary School	88-3100	Gym
24	Ichigi Elementary School	80-0385	Gym
5	Umetsubodai Junior High School	31-2131	Gym
6	Umetsubo Elementary School	31-4882	School Building (3) (flooding)
10	Toyota High School	45-8622	Gym
25	Misato Junior High School	89-1731	Gym
26	Nomi Elementary School	80-0372	Gym
27	Higashiyama Elementary School	80-7581	Gym
28	Hirokawada Elementary School	80-2801	Gym
29	Masutomi Junior High School	80-4161	Gym
30	Kosema Elementary School	80-0593	Gym
60	Sanagedai Junior High School	45-0039	Gym
61	Aoki Elementary School	45-0025	Gym
64	Isato Junior High School	45-8222	Gym
65	Shigo Elementary School	45-2283	Gym
66	Inoue Elementary School	45-2411	Gym
67	Sanage Norin High School	45-0621	Gym
103	Kiyama Multipurpose Community Hall	-	Assembly room

Numbers in circles indicate the floor level. Be sure to evacuate to a floor at or above this level.

Legend

- Estimated area of overflow including house collapse (river bank erosion)
- Estimated area of overflow including house collapse (overflow)
- Past flooding (2000 Tokai Flood)
- Landslide Special Hazard Areas*
- Landslide Hazard Areas*
- Landslide Danger Areas
- *For details, refer to the reverse side.
- Emergency transportation road, etc.
- Roads (national or prefectural)
- Junior high school district
- Designated emergency evacuation sites for storms and floods
- Temporary evacuation site
- Government offices, fire stations, police stations
- River monitoring cameras
- Water level observation stations
- Rainfall observatories
- Underground facilities
- Facilities for people requiring special assistance

Temporary evacuation sites (designated cooperative facilities)

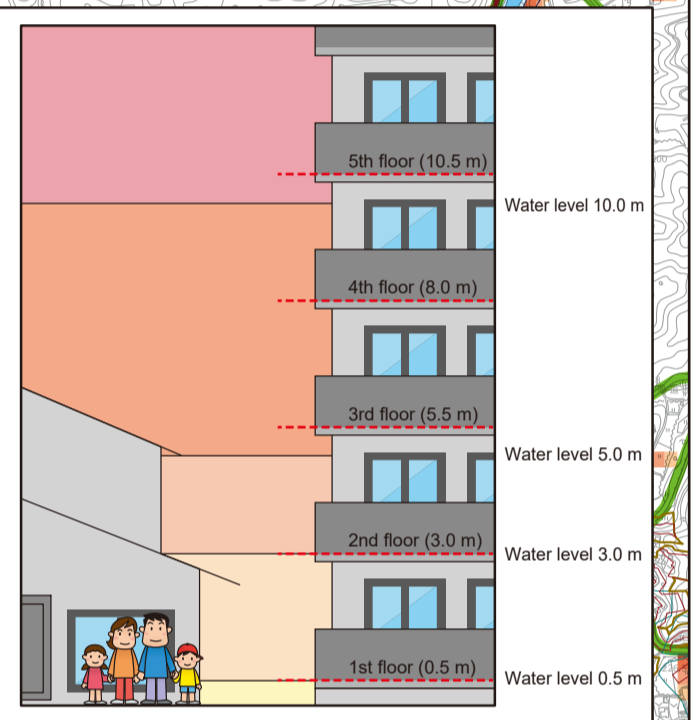
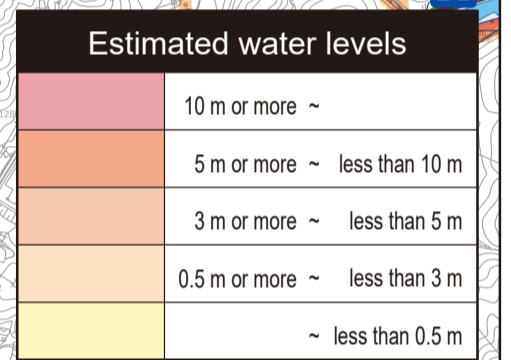
No.	Name
	National Institute of Technology (Kosen), Toyota College (Gym No.2)
	*Parking lot is not available.
	Chukyo University
	Aichi Institute of Technology
	Aichi Gakusen University
5	ZENT Oshimizu Store (parking lot)
	ZENT Toyota Main Store (parking lot)
	ZENT Wakabayashi Store (parking lot)

These facilities can be used temporarily only when a major disaster is expected and announced by the city council. Please bring any necessary items with you when evacuating.

Temporary vehicle evacuation sites (public facilities)

No.	Name
	Toyota City Cultural Hall
	Himori Park (parking lot)
10	Nishiyama Park (parking lot)
	Shinsei Park (parking lot)
12	Kuragaika Park (parking lot)
13	Sanage Park (parking lot)
	Tsuhishashi Park (parking lot)
15	Inoue Park (parking lot)
	Maruyama Park (parking lot)
	Ishino Sports Ground (parking lot)

These facilities can be used for temporary parking only when a major disaster is expected and announced by the city council. Please bring any necessary items with you when evacuating.



River monitoring cameras

No.	Name
24	Near the area under the Hirato Bridge
25	Near Kagawa River confluence (Yahagi River)
26	Near Takabashi Bridge (Yahagi River)
27	Near Kuchō Bridge (Yahagi River)
28	Near Kamo River sluice gate (Yahagi River)
29	Near Ryūgu Bridge (Yahagi River)
43	Kyo-machi (Kagawa River)

Underground facilities

No.	Name
1	GAZA Parking
2	Toyota Saagechikam Underground Parking Lot
3	Toyota City Hall South Building
4	Toyota City Hall East Building
5	Shimizu Station Underground Parking Lot
6	COMO Parking
7	KITARA Parking

Government offices, fire stations, police stations

No.	Name	Tel.
13	Naka Fire Station, Higashi Branch	87-0360
30	Takahashi Police Box	35-0110
45	Takahashi Exchange Center	88-4887
1	Toyota City Hall	31-1212
2	Sanage Community Center (Isato Exchange Center)	45-4807
3	Takahashi Community Center	80-4729
9	Kita Fire Station	43-0093
12	Fire Department Headquarters, Naka Fire Station Disaster Prevention Training Center	35-9720
20	Toyota Police Station	35-0110
24	Sanagedai Police Box	35-0110
28	Umetsubo Police Box	35-0110
29	Toyotashi Ekimae Police Box	35-0110
31	Mitachi Police Box	35-0110
35	Outaki Police Substation	35-0110
41	Soukakan Exchange Center	33-0750
42	Umetsubodai Exchange Center	31-0402
46	Misato Exchange Center	80-1697
47	Masutomi Exchange Center	80-3520
54	Sanagedai Exchange Center	45-2838
83	Higashishima Police Substation	62-0110

Water level observation stations

No.	Name
29	Ichigawa-ohashi Bridge
1	Takahashi
6	Kyo-machi
13	Higashiumetsubo Bridge
20	Yahagi River (left bank 38.8 km point)
21	Yahagi River (right bank 41.0 km from the river source)
24	Hirato Bridge
27	Yoshimori Bridge
28	Kyogamine Bridge
35	Takho Bridge

Rainfall observatories

No.	Name
7	Yanami
1	Nishimachi
4	Toyota (Tokiwa-cho)
5	Chokoji
14	Kamitaka
20	Shigo