

Toyota City Flood Hazard Map

Soukakan Umetsubodai Josui Asahigaoka Aizuma Junior high school district

Take action to protect yourself!
Maximum expected flooding conditions
Rainfall so heavy it is estimated to occur only once every 1,000 years

No.	Name	Tel.	Evacuation space
1	Soukakan Junior High School	31-0197	Gym
4	Asahi Elementary School	31-4880	Gym
*Residents in the Soukakan Junior High School District will also need to use evacuation sites in other school districts.			
5	Umetsubodai Junior High School	31-2131	Gym
6	Umetsubo Elementary School	31-4882	School Building (3) (flooding)
*Residents in the Umetsubodai Junior High School District will also need to use evacuation sites in other school districts.			
7	Josui Junior High School	42-8400	Gym
8	Josui Elementary School	45-0556	Gym
9	Josui Elementary School	63-5091	Gym
10	Toyota High School	45-8622	Gym
11	Asahigaoka Junior High School	32-0198	Gym
12	Dojyama Elementary School	32-0196	School Building (3) (flooding)
14	Koromogaka Elementary School	34-2030	Gym
15	Toyota Nishi High School	31-0313	Gym
*Residents in the Asahigaoka Junior High School District will also need to use evacuation sites in other school districts.			
16	Aizuma Junior High School	33-7881	Gym
17	Koshimizu Elementary School	32-0194	Gym
18	Miyama Elementary School	28-3458	Gym
19	Koromodai High School	33-1080	Gym
20	Takahashi Junior High School	80-0412	Gym
22	Hirai Elementary School	80-3011	North School Building/South School Building (2) (landslide)
24	Ichigi Elementary School	80-0385	Gym
25	Misato Junior High School	89-1731	Gym
26	Nomi Elementary School	80-0372	Gym
28	Hirokawada Elementary School	80-2801	Gym
47	Tsuchihashi Elementary School	29-5285	Gym
60	Sanagedai Junior High School	45-0039	Gym
61	Aoki Elementary School	45-0025	Gym
64	Isato Junior High School	45-8222	Gym
65	Shigo Elementary School	45-2283	Gym
66	Inoue Elementary School	45-2411	Gym
67	Sanage Norin High School	45-0821	Gym

No.	Name	Recommended school district
1	National Institute of Technology (Kosen), Toyota College (Gym No.2) *Parking lot is not available.	Soukakan
2	Chukyo University	Soukakan
3	Aichi Institute of Technology	Soukakan
4	Aichi Gakusei University	Asahigaoka
5	ZENT Ohimizu Store (parking lot)	Umetsubodai
6	ZENT Toyota Main Store (parking lot)	Umetsubodai
7	ZENT Wakabayashi Store (parking lot)	Umetsubodai

No.	Name	Recommended school district
8	Toyota City Cultural Hall	Soukakan
9	Himori Park (parking lot)	Soukakan
10	Nishiyama Park (parking lot)	Soukakan
11	Shinsei Park (parking lot)	Asahigaoka
12	Kuraigake Park (parking lot)	Umetsubodai
13	Sanage Park (parking lot)	Umetsubodai
14	Tsuchihashi Park (parking lot)	Umetsubodai
15	Inoue Park (parking lot)	Umetsubodai
16	Maruyama Park (parking lot)	Asahigaoka
17	Ishino Sports Ground (parking lot)	Asahigaoka

No.	Name
1	Takahashi
21	Yahagi River right bank (4.0 km from the river source)
6	Kyo-machi
13	Higashimutsubo Bridge
27	Yoshimori Bridge
8	Senzoku
14	Senzoku Bridge
11	Ekimaebashi
20	Yahagi River (left bank 38.8 km point)
24	Hirato Bridge
28	Kyogamine Bridge

No.	Name	Tel.
1	Toyota City Hall	31-1212
14	Naka Fire Station, Aizuma Branch	36-2450
20	Toyota Police Station	35-0110
29	Toyotashi Ekimae Police Box	35-0110
41	Soukakan Exchange Center	33-0750
28	Umetsubo Police Box	35-0110
42	Umetsubodai Exchange Center	31-0402
60	Josui Exchange Center	42-5920
4	Aizuma Exchange Center	35-9720
2	Sanage Community Center (Isato Exchange Center)	45-4807
3	Takahashi Community Center	80-4729
9	Kita Fire Station	43-0093
17	Minami Fire Station, Nishi Branch	25-2570
24	Sanagedai Police Box	35-0110
30	Takahashi Police Box	35-0110
31	Mitachi Police Box	35-0110
33	Tsuchihashi Police Box	35-0110
45	Takahashi Exchange Center	88-4887
46	Misato Exchange Center	80-1697
54	Sanagedai Exchange Center	45-2838

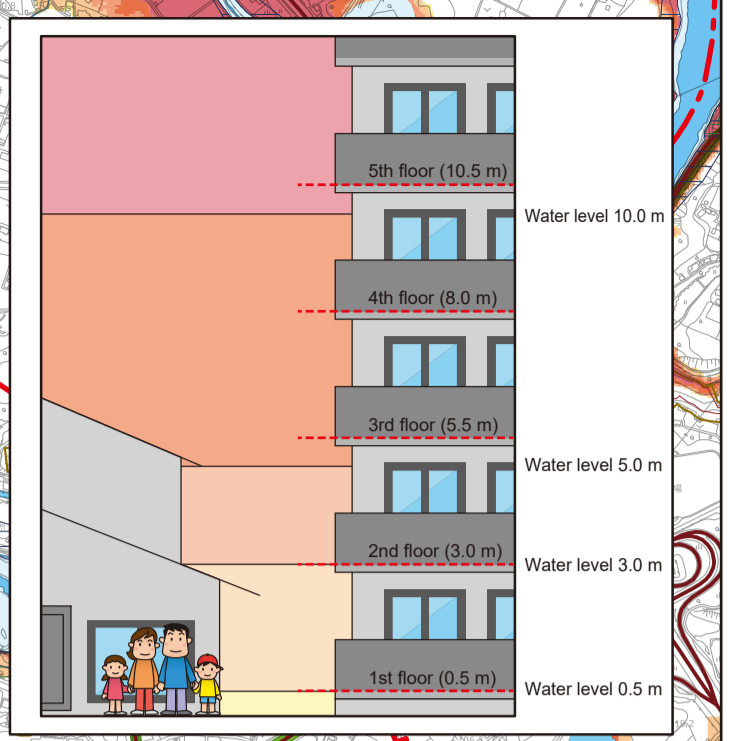
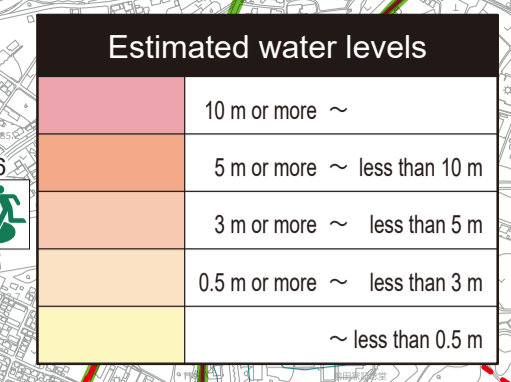
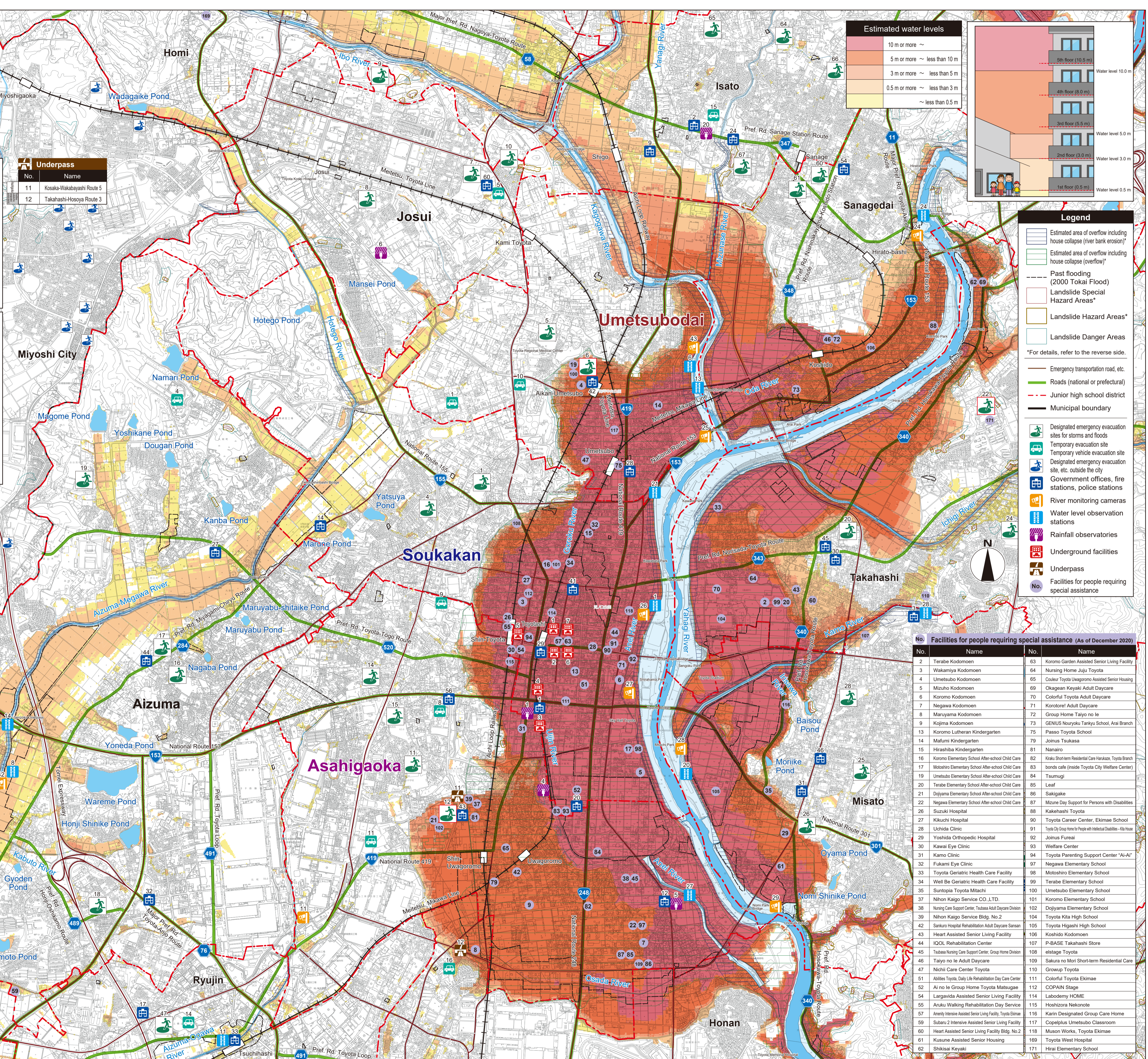
No.	Name
1	GAZA Parking
2	Toyota Sanghata Underpass Parking Lot
3	Toyota City Hall, South Building
4	Toyota City Hall, East Building
5	Shin-Toyota Station Underpass Parking Lot
6	COMO Parking
7	KITARA Parking

No.	Name
1	Nishimachi
6	Oshimizu
4	Toyota (Tokwa-cho)
5	Chokoji
20	Shigo

No.	Name
26	Near Takahashi Bridge (Yahagi River)
27	Near Kuroko Bridge (Yahagi River)
25	Near Kagawa River confluence (Yahagi River)
43	Kyo-machi (Kagawa River)
11	Hiso-yo-cho (Aizuma-Ogawa River)
42	Senzoku (Aizuma-Megawa River)
24	Near the area under the Hirato Bridge
28	Near Kano River slice gate (Yahagi River)
29	Near Ryugyu Bridge (Yahagi River)

Notes

- The expected water level and areas shown on the map are based on calculations. Depending on how the rain falls, flooding may occur in unexpected areas, or the actual depth may differ from the expected depth.
- This map was created based on information such as the flooding area map, inland water flooding area map, and reservoir hazard map.
- Overflow from rivers managed by the national or prefectural government is analyzed by river administrators based on the "Manual for Creating Flood Hazard Area Maps (4th Edition)" (July 2015).
- For overflow from some rivers managed by Toyota City, analysis made use of the PVRI RRI Model described in the "Guide for Creating Overflow Estimation Maps for Small Rivers" (June 2020).
- The estimated flooding due to inland water overflow is shown for depths of 20 cm or more.
- Overflow from reservoirs shows the affected area in the event a full reservoir breaks.
- The area of past flooding (2000 Tokai Flood) shown is based on interviews conducted at the time. This map contains analysis results reflecting changes in land use and urban facilities (such as residential land development), and past flooding (2000 Tokai Flood) may not be included in the area of estimated flooding.
- Landslide Hazard Areas, etc. are current as of December 8, 2020.
- The number and range of Landslide Hazard Areas, etc. may change due to subsequent basic surveys.
- Temporary evacuation sites and temporary vehicle evacuation sites are facilities available for temporary use throughout the city.



Legend

- Estimated area of overflow including house collapse (river bank erosion)*
- Estimated area of overflow including house collapse (overflow)*
- Past flooding (2000 Tokai Flood)
- Landslide Special Hazard Areas*
- Landslide Hazard Areas*
- Landslide Danger Areas
- *For details, refer to the reverse side.
- Emergency transportation road, etc.
- Roads (national or prefectural)
- Junior high school district
- Municipal boundary
- Designated emergency evacuation sites for storms and floods
- Temporary evacuation site
- Temporary vehicle evacuation site
- Designated emergency evacuation site, etc. outside the city
- Government offices, fire stations, police stations
- River monitoring cameras
- Water level observation stations
- Rainfall observatories
- Underground facilities
- Underpass
- Facilities for people requiring special assistance

No.	Name	No.	Name
2	Terabe Kodomoen	63	Koromo Garden Assisted Senior Living Facility
3	Wakamiya Kodomoen	64	Nursing Home Juju Toyota
4	Umetsubo Kodomoen	65	Cooker Toyota Ueagoromo Assisted Senior Housing
5	Mizuho Kodomoen	69	Okagean Keyaki Adult Daycare
6	Koromo Kodomoen	70	Colorful Toyota Adult Daycare
7	Negawa Kodomoen	71	Korotore! Adult Daycare
8	Maruyama Kodomoen	72	Group Home Taiyo no Ie
9	Kojima Kodomoen	73	GENIUS Nouyoku Tankyu School, Arai Branch
13	Koromo Lutheran Kindergarten	75	Passo Toyota School
14	Mafumi Kindergarten	79	Joinus Tsukasa
15	Hirashiba Kindergarten	81	Nanairo
16	Koromo Elementary School After-school Child Care	82	Kitaku Short-term Residential Care Hankaku, Toyota Branch
17	Motoshiro Elementary School After-school Child Care	83	bonds cafe (inside Toyota City Welfare Center)
19	Umetsubo Elementary School After-school Child Care	84	Tsumagui
20	Terabe Elementary School After-school Child Care	85	Leaf
21	Dojyama Elementary School After-school Child Care	86	Sakigake
22	Negawa Elementary School After-school Child Care	87	Mitsue Day Support for Persons with Disabilities
26	Suzuki Hospital	88	Kakehashi Toyota
27	Kikuchi Hospital	90	Toyota Career Center, Ekimae School
28	Uchida Clinic	91	Toyota City Group Home for People with Intellectual Disabilities - Ito House
29	Yoshida Orthopedic Hospital	92	Joinus Fureai
30	Kawai Eye Clinic	93	Welfare Center
31	Kamo Clinic	94	Toyota Parenting Support Center "Ai-Ai"
32	Fukami Eye Clinic	97	Negawa Elementary School
33	Toyota Geriatric Health Care Facility	98	Motoshiro Elementary School
34	Well Be Geriatric Health Care Facility	99	Terabe Elementary School
35	Suntopia Toyota Mitachi	100	Umetsubo Elementary School
37	Nihon Kaigo Service CO.,LTD.	101	Koromo Elementary School
38	Nursing Care Support Center, Tsukasa Adult Daycare Division	102	Dojyama Elementary School
39	Nihon Kaigo Service Bldg. No. 2	104	Toyota Kita High School
42	Sanjuro Hospital Rehabilitation Adult Daycare Sansan	105	Toyota Higashi High School
43	Heart Assisted Senior Living Facility	106	Koshido Kodomoen
44	IQOL Rehabilitation Center	107	P-BASE Takahashi Store
45	Tsukasa Nursing Care Support Center, Group Home Division	108	estage Toyota
46	Taiyo no Ie Adult Daycare	109	Sakura no Mori Short-term Residential Care
47	Nichii Care Center Toyota	110	Groupup Toyota
51	Ability Toyota, Daily Life Rehabilitation Day Care Center	111	Colorful Toyota Ekimae
52	Ai no Ie Group Home Toyota Matsugae	112	COPAIN Stage
54	Largavida Assisted Senior Living Facility	114	Labodemy HOME
55	Arunu Walking Rehabilitation Day Service	115	Hoshizora Nekonote
57	Amerity Assisted Senior Living Facility, Toyota Ekimae	116	Karin Unsettled Group Care Home
58	Subaru 2 Intensive Assisted Senior Living Facility	117	Copelpus Unsettled Classroom
60	Heart Assisted Senior Living Facility Bldg. No. 2	118	Muson Works, Toyota Ekimae
61	Kusunne Assisted Senior Housing	169	Toyota West Hospital
62	Shikaisi Keyaki	171	Hirai Elementary School