

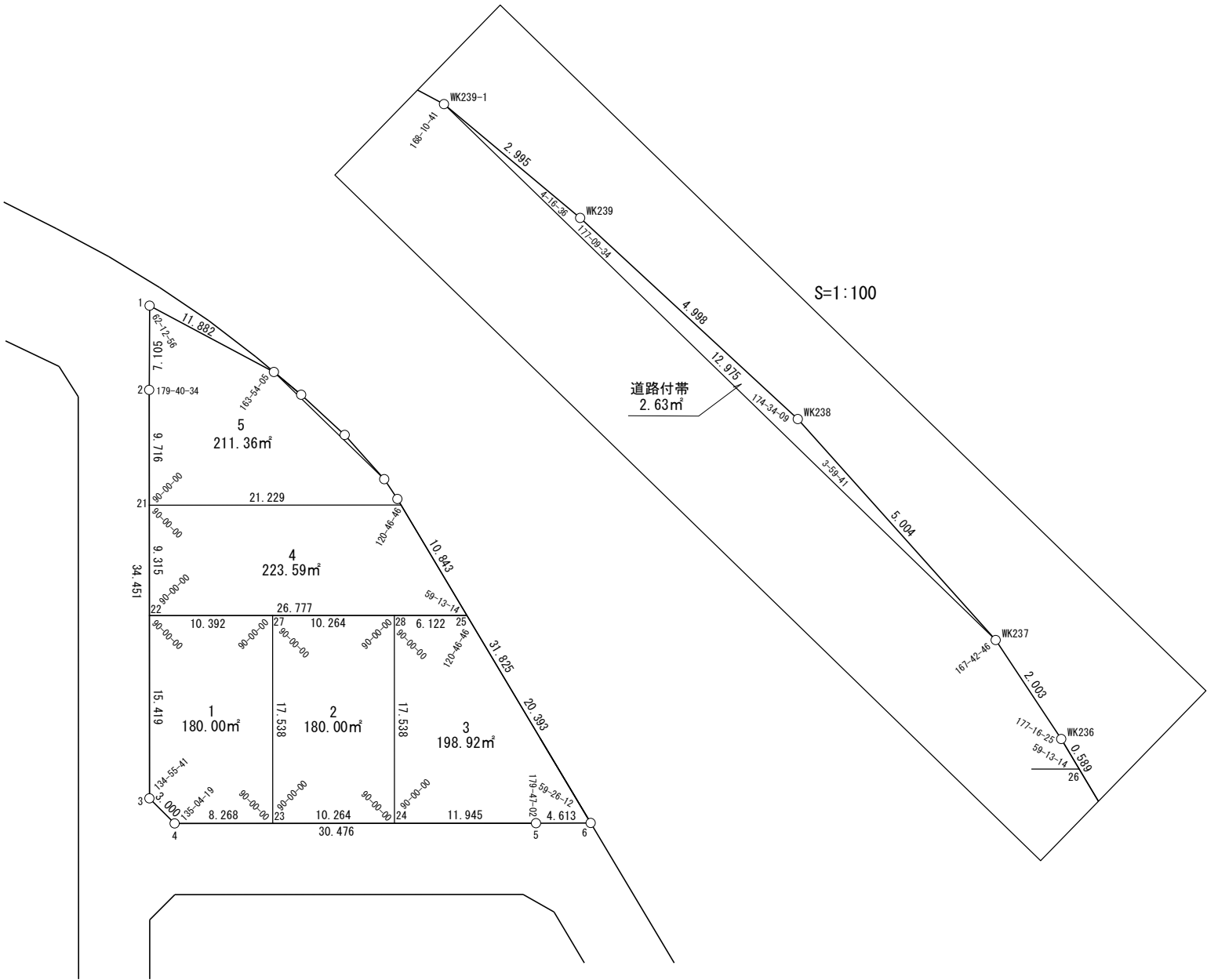
世界測地系

面積一覧表

地番名	面積
W249-1	180.00 m ²
W249-2	180.00 m ²
W249-3	198.92 m ²
W249-4	223.59 m ²
W249-5	211.36 m ²
W249-6	2.63 m ²
合計	996.50 m ²

座 標 一 覧 表

測 点 名	X 座 標	Y 座 標
W249-1	-97315.640	-1450.278
W249-2	-97322.440	-1452.341
W249-3	-97355.462	-1462.156
W249-4	-97358.098	-1460.724
W249-5	-97366.782	-1431.511
W249-6	-97368.079	-1427.084
W249-21	-97331.753	-1455.109
W249-22	-97340.682	-1457.763
W249-23	-97360.454	-1452.799
W249-24	-97363.378	-1442.961
W249-25	-97348.312	-1432.096
W249-26	-97337.802	-1434.760
W249-27	-97343.643	-1447.802
W249-28	-97346.567	-1437.964
WK236	-97337.230	-1434.905
WK237	-97335.314	-1435.489
WK238	-97330.788	-1437.623
WK239	-97326.489	-1440.173
WK239-1	-97323.993	-1441.827



面積（座標法）計算書

地 番： W249-1

測点名	[1] X(i)	[2] X(i+1)-X(i-1)	[3] Y(i)	[4] Y(i+1)-Y(i-1)	[2]*[3]	[1]*[4]	方向角	夾 角	距 離
W249-3	-97355.462	-17.416	-1462.156	-2.961	25465.024727	288254.297961	151-28-55	134-55-41	3.000
W249-4	-97358.098	-4.992	-1460.724	9.358	7291.425804	-911031.658144	106-33-14	135-04-19	8.268
W249-23	-97360.454	14.455	-1452.799	12.922	-21000.600781	-1258093.190077	16-33-14	90-00-00	17.538
W249-27	-97343.643	19.772	-1447.802	-4.964	-28625.545183	483251.263705	286-33-14	90-00-00	10.392
W249-22	-97340.682	-11.819	-1457.763	-14.354	17229.697430	1397259.284557	196-33-14	90-00-00	15.419
合計				倍面積	360.001997	-360.001997			54.617
				面 積	180.0009990	180.0009990			

面積（座標法）計算書

地番：W249-2

測点名	[1] X(i)	[2] X(i+1)-X(i-1)	[3] Y(i)	[4] Y(i+1)-Y(i-1)	[2]*[3]	[1]*[4]	方向角	夾角	距離
W249-23	-97360.454	-19.735	-1452.799	4.841	28671.236129	-471361.759329	106-33-14	90-00-00	10.264
W249-24	-97363.378	13.887	-1442.961	14.835	-20037.919057	-1444383.916853	16-33-14	90-00-00	17.538
W249-28	-97346.567	19.735	-1437.964	-4.841	-28378.465184	471294.528275	286-33-14	90-00-00	10.264
W249-27	-97343.643	-13.887	-1447.802	-14.835	20105.150111	1444091.145907	196-33-14	90-00-00	17.538
合計				倍面積	360.001999	-360.001999			55.604
				面積	180.0009999	180.0009999			

面積（座標法）計算書

地 番： W249-3

測点名	[1] X(i)	[2] X(i+1)-X(i-1)	[3] Y(i)	[4] Y(i+1)-Y(i-1)	[2]*[3]	[1]*[4]	方向角	夾 角	距 離
W249-24	-97363.378	-20.214	-1442.961	6.453	29168.238845	-628275.521139	106-33-14	90-00-00	11.945
W249-5	-97366.782	-4.701	-1431.511	15.876	6729.285299	-1545815.208926	106-20-16	179-47-02	4.613
W249-6	-97368.079	18.470	-1427.084	-0.585	-26358.199123	56942.040603	345-46-28	59-26-12	20.393
W249-25	-97348.312	21.512	-1432.096	-10.879	-30806.883934	1059093.265980	286-33-14	120-46-46	6.122
W249-28	-97346.567	-15.067	-1437.964	-10.865	21665.406061	1057657.576332	196-33-14	90-00-00	17.538
合計				倍面積	397.847149	-397.847149			60.611
				面 積	198.9235747	198.9235747			

面積（座標法）計算書

地 番： W249-4

測点名	[1] X(i)	[2] X(i+1)-X(i-1)	[3] Y(i)	[4] Y(i+1)-Y(i-1)	[2]*[3]	[1]*[4]	方向角	夾 角	距 離
W249-21	-97331.753	-2.881	-1455.109	-23.003	4191.996956	2238921.100176	196-33-14	90-00-00	9.315
W249-22	-97340.682	-16.559	-1457.763	23.013	24138.413363	-2240135.923105	106-33-14	90-00-00	26.777
W249-25	-97348.312	2.881	-1432.096	23.003	-4125.698195	-2239301.995821	345-46-28	59-13-14	10.843
W249-26	-97337.802	16.559	-1434.760	-23.013	-23757.517718	2240069.624344	286-33-14	120-46-46	21.229
合計				倍面積	447.194405	-447.194405			68.164
				面 積	223.5972026	223.5972026			

面積（座標法）計算書

地 番： W249-5

測点名	[1] X(i)	[2] X(i+1)-X(i-1)	[3] Y(i)	[4] Y(i+1)-Y(i-1)	[2]*[3]	[1]*[4]	方向角	夾 角	距 離
W249-1	-97315.640	1.553	-1450.278	-10.514	-2252.285582	1023177.382766	196-52-40	62-12-56	7.105
W249-2	-97322.440	-16.113	-1452.341	-4.831	23401.146463	470180.228274	196-33-14	179-40-34	9.716
W249-21	-97331.753	-15.362	-1455.109	17.581	22353.358620	-1711148.477453	106-33-14	90-00-00	21.229
W249-26	-97337.802	-5.477	-1434.760	20.204	7858.648077	-1966624.992067	345-46-28	59-13-14	0.589
WK236	-97337.230	2.487	-1434.905	-0.729	-3568.733464	70939.548749	343-02-53	177-16-25	2.003
WK237	-97335.314	13.238	-1435.489	-6.922	-19002.871932	673735.238678	330-45-39	167-42-46	12.975
WK239-1	-97323.993	19.674	-1441.827	-14.789	-28366.526817	1439318.335687	314-39-44	163-54-05	11.882
合計				倍面積	422.735364	-422.735364			65.499
				面 積	211.3676823	211.3676823			