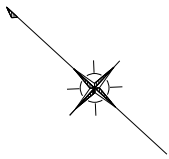
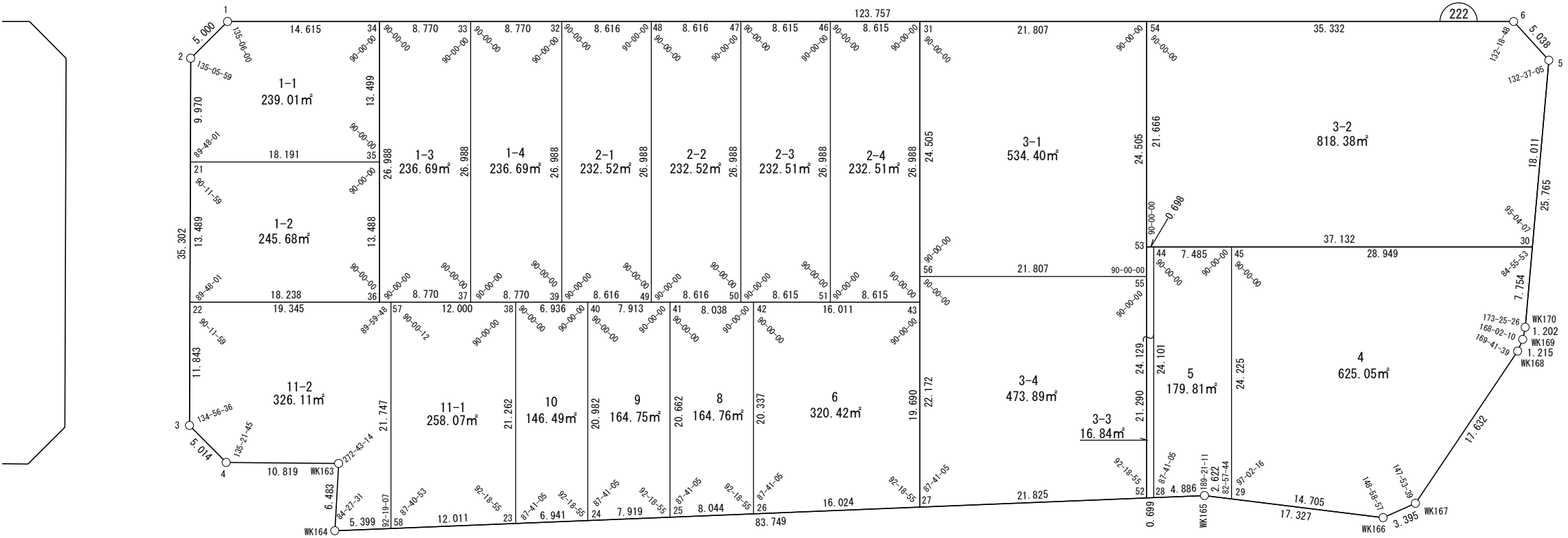


面積一覧表

地番名	面積	地番名	面積
W222-1-1	239.01㎡	W222-4	625.05㎡
W222-1-2	245.68㎡	W222-5	179.81㎡
W222-1-3	236.69㎡	W222-6	320.42㎡
W222-1-4	236.69㎡	W222-8	164.76㎡
W222-2-1	232.52㎡	W222-9	164.75㎡
W222-2-2	232.52㎡	W222-10	146.49㎡
W222-2-3	232.51㎡	W222-11-1	326.11㎡
W222-2-4	232.51㎡	W222-11-2	258.07㎡
W222-3-1	534.40㎡	合計	5917.10㎡
W222-3-2	818.38㎡		
W222-3-3	16.84㎡		
W222-3-4	473.89㎡		



世界測地系



座 標 一 覧 表

測 点 名	X 座 標	Y 座 標	測 点 名	X 座 標	Y 座 標	測 点 名	X 座 標	Y 座 標	測 点 名	X 座 標	Y 座 標
W222-1	-98040.728	-2501.494	W222-29	-98142.940	-2469.998	W222-43	-98108.061	-2476.344	W222-57	-98070.558	-2510.751
W222-2	-98040.504	-2506.489	W222-30	-98147.895	-2432.577	W222-44	-98121.048	-2457.208	W222-58	-98085.259	-2526.777
W222-3	-98064.279	-2532.584	W222-31	-98089.817	-2456.457	W222-45	-98126.563	-2452.148	WK163	-98077.324	-2525.569
W222-4	-98069.287	-2532.812	W222-32	-98064.422	-2479.755	W222-46	-98083.468	-2462.282	WK164	-98081.431	-2530.585
W222-5	-98136.939	-2418.282	W222-33	-98057.960	-2485.685	W222-47	-98077.120	-2468.106	WK165	-98140.805	-2471.521
W222-6	-98131.921	-2417.829	W222-34	-98051.497	-2491.614	W222-48	-98070.771	-2473.931	WK166	-98154.912	-2461.460
W222-21	-98047.219	-2513.858	W222-35	-98060.623	-2501.561	W222-49	-98089.016	-2493.817	WK167	-98156.265	-2458.345
W222-22	-98056.303	-2523.829	W222-36	-98069.742	-2511.500	W222-50	-98095.364	-2487.992	WK168	-98153.622	-2440.912
W222-23	-98093.774	-2518.306	W222-37	-98076.204	-2505.571	W222-51	-98101.713	-2482.168	WK169	-98153.228	-2439.763
W222-24	-98098.695	-2513.411	W222-38	-98079.400	-2502.639	W222-52	-98136.845	-2475.460	WK170	-98152.611	-2438.732
W222-25	-98104.309	-2507.826	W222-39	-98082.667	-2499.642	W222-53	-98120.533	-2457.680			
W222-26	-98110.012	-2502.153	W222-40	-98084.511	-2497.950	W222-54	-98105.886	-2441.715			
W222-27	-98121.372	-2490.852	W222-41	-98090.341	-2492.601	W222-55	-98122.453	-2459.772			
W222-28	-98137.341	-2474.967	W222-42	-98096.264	-2487.167	W222-56	-98106.384	-2474.515			

面積（座標法）計算書

地 番： W222-1-1

測点名	[1] X(i)	[2] X(i+1)-X(i-1)	[3] Y(i)	[4] Y(i+1)-Y(i-1)	[2]*[3]	[1]*[4]	方向角	夾 角	距 離
W222-35	-98060.623	-4.278	-2501.561	22.245	10702.829102	-2181329.637178	47-27-55	90-00-00	13.499
W222-34	-98051.497	19.895	-2491.614	0.067	-49570.249374	-6579.255449	317-27-55	90-00-00	14.615
W222-1	-98040.728	10.993	-2501.494	-14.875	-27498.373356	1458336.240623	272-33-55	135-06-00	5.000
W222-2	-98040.504	-6.491	-2506.489	-12.365	16268.471203	1212247.912967	227-39-54	135-05-59	9.970
W222-21	-98047.219	-20.119	-2513.858	4.928	50575.350623	-483153.289161	137-27-55	89-48-01	18.191
合計				倍面積	478.028198	-478.028198			61.275
				面 積	239.0140994	239.0140994			

面積（座標法）計算書

地 番： W222-1-2

測点名	[1] X(i)	[2] X(i+1)-X(i-1)	[3] Y(i)	[4] Y(i+1)-Y(i-1)	[2]*[3]	[1]*[4]	方向角	夾 角	距 離
W222-21	-98047.219	4.320	-2513.858	-22.269	-10860.471176	2183382.605489	227-39-54	90-11-59	13.489
W222-22	-98056.303	-22.523	-2523.829	2.358	56844.159101	-231257.876558	137-27-55	89-48-01	18.238
W222-36	-98069.742	-4.320	-2511.500	22.269	10850.282239	-2183884.162624	47-27-55	90-00-00	13.488
W222-35	-98060.623	22.523	-2501.561	-2.358	-56342.601965	231268.065494	317-27-55	90-00-00	18.191
合計				倍面積	491.368198	-491.368198			63.406
				面 積	245.6840994	245.6840994			

面積（座標法）計算書

地 番： W222-1-3

測点名	[1] X(i)	[2] X(i+1)-X(i-1)	[3] Y(i)	[4] Y(i+1)-Y(i-1)	[2]*[3]	[1]*[4]	方向角	夾 角	距 離
W222-36	-98069.742	-24.707	-2511.500	-13.957	62052.210301	1368771.229406	137-27-55	90-00-00	8.770
W222-37	-98076.204	11.782	-2505.571	25.815	-29520.152704	-2531881.425342	47-27-55	90-00-00	26.988
W222-33	-98057.960	24.707	-2485.685	13.957	-61414.381997	-1368606.789298	317-27-55	90-00-00	8.770
W222-34	-98051.497	-11.782	-2491.614	-25.815	29355.712597	2531243.597039	227-27-55	90-00-00	26.988
合計				倍面積	473.388195	-473.388195			71.516
				面 積	236.6940980	236.6940980			

面積（座標法）計算書

地番：W222-1-4

測点名	[1] X(i)	[2] X(i+1)-X(i-1)	[3] Y(i)	[4] Y(i+1)-Y(i-1)	[2]*[3]	[1]*[4]	方向角	夾角	距離
W222-37	-98076.204	-24.707	-2505.571	-13.957	61905.717303	1368861.430255	137-27-55	90-00-00	8.770
W222-39	-98082.667	11.782	-2499.642	25.815	-29450.296175	-2532048.272972	47-27-55	90-00-00	26.988
W222-32	-98064.422	24.707	-2479.755	13.957	-61267.888994	-1368696.990149	317-27-55	90-00-00	8.770
W222-33	-98057.960	-11.782	-2485.685	-25.815	29285.856069	2531410.444663	227-27-55	90-00-00	26.988
合計				倍面積	473.388202	-473.388202			71.516
				面積	236.6941012	236.6941012			

面積（座標法）計算書

地番：W222-2-1

測点名	[1] X(i)	[2] X(i+1)-X(i-1)	[3] Y(i)	[4] Y(i+1)-Y(i-1)	[2]*[3]	[1]*[4]	方向角	夾角	距離
W222-48	-98070.771	24.593	-2473.931	14.062	-60842.099081	-1379037.264881	317-27-55	90-00-00	8.616
W222-32	-98064.422	-11.896	-2479.755	-25.711	29498.542837	2521326.291795	227-27-55	90-00-00	26.988
W222-39	-98082.667	-24.593	-2499.642	-14.062	61474.415164	1379204.538762	137-27-55	90-00-00	8.616
W222-49	-98089.016	11.896	-2493.817	25.711	-29665.816718	-2521958.607878	47-27-55	90-00-00	26.988
合計				倍面積	465.042201	-465.042201			71.208
				面積	232.5211010	232.5211010			

面積（座標法）計算書

地番：W222-2-2

測点名	[1] X(i)	[2] X(i+1)-X(i-1)	[3] Y(i)	[4] Y(i+1)-Y(i-1)	[2]*[3]	[1]*[4]	方向角	夾角	距離
W222-47	-98077.120	24.593	-2468.106	14.062	-60698.845475	-1379126.787134	317-27-55	90-00-00	8.616
W222-48	-98070.771	-11.896	-2473.931	-25.711	29429.261310	2521489.276510	227-27-55	90-00-00	26.988
W222-49	-98089.016	-24.593	-2493.817	-14.062	61331.161425	1379294.061084	137-27-55	90-00-00	8.616
W222-50	-98095.364	11.896	-2487.992	25.711	-29596.535260	-2522121.592460	47-27-55	90-00-00	26.988
合計				倍面積	465.041999	-465.041999			71.208
				面積	232.5210000	232.5210000			

面積（座標法）計算書

地番：W222-2-3

測点名	[1] X(i)	[2] X(i+1)-X(i-1)	[3] Y(i)	[4] Y(i+1)-Y(i-1)	[2]*[3]	[1]*[4]	方向角	夾角	距離
W222-46	-98083.468	24.593	-2462.282	14.062	-60554.932546	-1379240.627319	317-27-55	90-00-00	8.615
W222-47	-98077.120	-11.896	-2468.106	-25.711	29360.646871	2521627.940957	227-27-55	90-00-00	26.988
W222-50	-98095.364	-24.593	-2487.992	-14.062	61187.235315	1379407.908088	137-27-55	90-00-00	8.615
W222-51	-98101.713	11.896	-2482.168	25.711	-29527.927640	-2522260.243727	47-27-55	90-00-00	26.988
合計				倍面積	465.022000	-465.022000			71.206
				面積	232.5110000	232.5110000			

面積（座標法）計算書

地番：W222-2-4

測点名	[1] X(i)	[2] X(i+1)-X(i-1)	[3] Y(i)	[4] Y(i+1)-Y(i-1)	[2]*[3]	[1]*[4]	方向角	夾角	距離
W222-43	-98108.061	11.896	-2476.344	25.711	-29458.640698	-2522423.467785	47-27-55	90-00-00	26.988
W222-31	-98089.817	24.593	-2456.457	14.062	-60411.693510	-1379329.899282	317-27-55	90-00-00	8.615
W222-46	-98083.468	-11.896	-2462.282	-25.711	29291.359928	2521791.165016	227-27-55	90-00-00	26.988
W222-51	-98101.713	-24.593	-2482.168	-14.062	61043.996280	1379497.180051	137-27-55	90-00-00	8.615
合計				倍面積	465.022000	-465.022000			71.206
				面積	232.5110000	232.5110000			

面積（座標法）計算書

地番：W222-3-1

測点名	[1] X(i)	[2] X(i+1)-X(i-1)	[3] Y(i)	[4] Y(i+1)-Y(i-1)	[2]*[3]	[1]*[4]	方向角	夾角	距離
W222-55	-98122.453	0.497	-2459.772	32.800	-1223.373274	-3218406.438799	47-27-55	90-00-00	24.505
W222-54	-98105.886	32.636	-2441.715	3.315	-79687.225097	-325197.645259	317-27-55	90-00-00	21.807
W222-31	-98089.817	-0.497	-2456.457	-32.800	1221.724670	3217335.989105	227-27-55	90-00-00	24.505
W222-56	-98106.384	-32.636	-2474.515	-3.315	80757.674791	325199.293863	137-27-55	90-00-00	21.807
合計				倍面積	1068.801089	-1068.801089			92.624
				面積	534.4005448	534.4005448			

面積（座標法）計算書

地 番： W222-3-2

測点名	[1] X(i)	[2] X(i+1)-X(i-1)	[3] Y(i)	[4] Y(i+1)-Y(i-1)	[2]*[3]	[1]*[4]	方向角	夾 角	距 離
W222-54	-98105.886	11.388	-2441.715	-39.850	-27805.586251	3909554.091456	227-27-55	90-00-00	21.666
W222-53	-98120.533	-42.008	-2457.680	9.137	103243.020313	-896571.250887	137-27-55	90-00-00	37.132
W222-30	-98147.895	-16.406	-2432.577	39.398	39907.655316	-3866825.628246	52-32-02	95-04-07	18.011
W222-5	-98136.939	15.974	-2418.282	14.748	-38628.721253	-1447312.952899	5-09-07	132-37-05	5.038
W222-6	-98131.921	31.052	-2417.829	-23.433	-75079.601175	2299518.973626	317-27-55	132-18-48	35.332
合計				倍面積	1636.766949	-1636.766949			117.179
				面 積	818.3834749	818.3834749			

面積（座標法）計算書

地番：W222-3-3

測点名	[1] X(i)	[2] X(i+1)-X(i-1)	[3] Y(i)	[4] Y(i+1)-Y(i-1)	[2]*[3]	[1]*[4]	方向角	夾角	距離
W222-28	-98137.341	15.798	-2474.967	18.252	-39098.741254	-1791224.590736	47-27-55	92-18-55	24.101
W222-44	-98121.048	16.808	-2457.208	17.287	-41300.079374	-1696242.607399	317-27-55	90-00-00	0.698
W222-53	-98120.533	-15.798	-2457.680	-18.252	38825.642861	1790917.812341	227-27-55	90-00-00	24.129
W222-52	-98136.845	-16.808	-2475.460	-17.287	41606.857770	1696515.705792	135-09-00	87-41-05	0.699
合計				倍面積	33.680002	-33.680002			49.627
				面積	16.8400011	16.8400011			

面積（座標法）計算書

地番：W222-3-4

測点名	[1] X(i)	[2] X(i+1)-X(i-1)	[3] Y(i)	[4] Y(i+1)-Y(i-1)	[2]*[3]	[1]*[4]	方向角	夾角	距離
W222-27	-98121.372	-30.462	-2490.852	-0.945	75876.026279	92749.335996	135-09-00	87-41-05	21.825
W222-52	-98136.845	-1.080	-2475.460	31.080	2674.594390	-3050105.067530	47-27-55	92-18-55	21.290
W222-55	-98122.453	30.462	-2459.772	0.945	-74929.267549	-92750.357286	317-27-55	90-00-00	21.807
W222-56	-98106.384	1.080	-2474.515	-31.080	-2673.573100	3049158.308800	227-27-55	90-00-00	22.172
合計				倍面積	947.780020	-947.780020			87.094
				面積	473.8900100	473.8900100			

面積（座標法）計算書

地 番： W222-4

測点名	[1] X(i)	[2] X(i+1)-X(i-1)	[3] Y(i)	[4] Y(i+1)-Y(i-1)	[2]*[3]	[1]*[4]	方向角	夾 角	距 離
W222-29	-98142.940	-28.349	-2469.998	-9.312	70022.012406	913893.964562	144-30-11	97-02-16	14.705
WK166	-98154.912	-13.325	-2461.460	11.653	32799.576960	-1143784.889334	113-29-08	148-58-57	3.395
WK167	-98156.265	1.290	-2458.345	20.547	-3170.545317	-2016824.152743	81-22-47	147-53-39	17.632
WK168	-98153.622	3.037	-2440.912	18.582	-7412.638494	-1823891.101762	71-04-26	169-41-39	1.215
WK169	-98153.228	1.011	-2439.763	2.181	-2466.901163	-214034.019297	59-06-36	168-02-10	1.202
WK170	-98152.611	5.334	-2438.732	7.186	-13007.880550	-705333.056513	52-32-02	173-25-26	7.754
W222-30	-98147.895	26.048	-2432.577	-13.416	-63364.218397	1316734.446804	317-27-55	84-55-53	28.949
W222-45	-98126.563	4.955	-2452.148	-37.421	-12149.297241	3671988.700082	227-27-55	90-00-00	24.225
合計				倍面積	1250.108202	-1250.108202			99.077
				面 積	625.0541012	625.0541012			

面積（座標法）計算書

地 番： W222-5

測点名	[1] X(i)	[2] X(i+1)-X(i-1)	[3] Y(i)	[4] Y(i+1)-Y(i-1)	[2]*[3]	[1]*[4]	方向角	夾 角	距 離
W222-45	-98126.563	21.892	-2452.148	12.791	-53682.982539	-1255094.722878	317-27-55	90-00-00	7.485
W222-44	-98121.048	-10.778	-2457.208	-22.819	26483.321620	2239058.088776	227-27-55	90-00-00	24.101
W222-28	-98137.341	-19.757	-2474.967	-14.313	48899.070922	1404651.634665	135-09-00	87-41-05	4.886
WK165	-98140.805	-5.599	-2471.521	4.969	13838.217205	-487638.156240	144-30-11	189-21-11	2.622
W222-29	-98142.940	14.242	-2469.998	19.373	-35177.997477	-1901336.474054	47-27-55	82-57-44	24.225
合計				倍面積	359.629731	-359.629731			63.319
				面 積	179.8148659	179.8148659			

面積（座標法）計算書

地番：W222-6

測点名	[1] X(i)	[2] X(i+1)-X(i-1)	[3] Y(i)	[4] Y(i+1)-Y(i-1)	[2]*[3]	[1]*[4]	方向角	夾角	距離
W222-26	-98110.012	-25.109	-2502.153	-3.685	62825.443378	361519.687471	135-09-00	87-41-05	16.024
W222-27	-98121.372	1.951	-2490.852	25.809	-4858.879568	-2532451.695275	47-27-55	92-18-55	19.690
W222-43	-98108.061	25.109	-2476.344	3.685	-62177.407200	-361512.499492	317-27-55	90-00-00	16.011
W222-42	-98096.264	-1.951	-2487.167	-25.809	4851.691589	2531803.659097	227-27-55	90-00-00	20.337
合計				倍面積	640.848199	-640.848199			72.062
				面積	320.4240998	320.4240998			

面積（座標法）計算書

地番：W222-8

測点名	[1] X(i)	[2] X(i+1)-X(i-1)	[3] Y(i)	[4] Y(i+1)-Y(i-1)	[2]*[3]	[1]*[4]	方向角	夾角	距離
W222-25	-98104.309	-19.671	-2507.826	-9.552	49331.562690	937089.958675	135-09-00	87-41-05	8.044
W222-26	-98110.012	8.046	-2502.153	20.659	-20131.175262	-2026829.183976	47-27-55	92-18-55	20.337
W222-42	-98096.264	19.671	-2487.167	9.552	-48925.183681	-937013.107863	317-27-55	90-00-00	8.038
W222-41	-98090.341	-8.046	-2492.601	-20.659	20054.324450	2026422.804967	227-27-55	90-00-00	20.662
合計				倍面積	329.528196	-329.528196			57.081
				面積	164.7640982	164.7640982			

面積（座標法）計算書

地番：W222-9

測点名	[1] X(i)	[2] X(i+1)-X(i-1)	[3] Y(i)	[4] Y(i+1)-Y(i-1)	[2]*[3]	[1]*[4]	方向角	夾角	距離
W222-24	-98098.695	-19.799	-2513.411	-9.876	49762.202048	968814.883902	135-09-00	87-41-05	7.919
W222-25	-98104.309	8.354	-2507.826	20.810	-20950.132838	-2041552.147656	47-27-55	92-18-55	20.662
W222-41	-98090.341	19.799	-2492.601	9.876	-49350.191381	-968732.381437	317-27-55	90-00-00	7.913
W222-40	-98084.511	-8.354	-2497.950	-20.810	20867.630372	2041140.136988	227-27-55	90-00-00	20.982
合計				倍面積	329.508201	-329.508201			57.476
				面積	164.7541010	164.7541010			

面積（座標法）計算書

地番：W222-10

測点名	[1] X(i)	[2] X(i+1)-X(i-1)	[3] Y(i)	[4] Y(i+1)-Y(i-1)	[2]*[3]	[1]*[4]	方向角	夾角	距離
W222-23	-98093.774	-19.295	-2518.306	-10.772	48590.902035	1056678.238042	135-09-00	87-41-05	6.941
W222-24	-98098.695	9.263	-2513.411	20.356	-23282.655660	-1996916.803045	47-27-55	92-18-55	20.982
W222-40	-98084.511	19.295	-2497.950	10.772	-48198.127675	-1056578.451881	317-27-55	90-00-00	6.936
W222-38	-98079.400	-9.263	-2502.639	-20.356	23182.869499	1996524.028686	227-27-55	90-00-00	21.262
合計				倍面積	292.988198	-292.988198			56.121
				面積	146.4940995	146.4940995			

面積（座標法）計算書

地 番： W222-11-1

測点名	[1] X(i)	[2] X(i+1)-X(i-1)	[3] Y(i)	[4] Y(i+1)-Y(i-1)	[2]*[3]	[1]*[4]	方向角	夾 角	距 離
W222-57	-98070.558	-5.859	-2510.751	-24.138	14709.851658	2367254.346569	227-28-07	90-00-12	21.747
W222-58	-98085.259	-23.216	-2526.777	-7.555	58662.781473	741040.159836	135-09-00	87-40-53	12.011
W222-23	-98093.774	5.859	-2518.306	24.138	-14754.114835	-2367814.751536	47-27-55	92-18-55	21.262
W222-38	-98079.400	23.216	-2502.639	7.555	-58102.376505	-740995.896659	317-27-55	90-00-00	12.000
合計				倍面積	516.141790	-516.141790			67.020
				面 積	258.0708951	258.0708951			

面積（座標法）計算書

地 番： W222-11-2

測点名	[1] X(i)	[2] X(i+1)-X(i-1)	[3] Y(i)	[4] Y(i+1)-Y(i-1)	[2]*[3]	[1]*[4]	方向角	夾 角	距 離
W222-22	-98056.303	6.279	-2523.829	-21.833	-15846.782636	2140854.339569	227-39-54	90-11-59	11.843
W222-3	-98064.279	-12.985	-2532.584	-8.983	32885.310473	880913.886493	182-36-30	134-56-36	5.014
W222-4	-98069.287	-13.046	-2532.812	7.016	33041.962726	-688009.166077	137-58-15	135-21-45	10.819
WK163	-98077.324	-12.144	-2525.569	2.228	30669.546706	-218479.989774	230-41-29	272-43-14	6.483
WK164	-98081.431	-7.934	-2530.585	-1.208	20078.873862	118530.295839	135-09-00	84-27-31	5.399
W222-58	-98085.259	10.874	-2526.777	19.833	-27475.111612	-1945370.533869	47-28-07	92-19-07	21.747
W222-57	-98070.558	28.956	-2510.751	2.948	-72701.571498	-289091.060203	317-27-55	89-59-48	19.345
合計				倍面積	652.228022	-652.228022			80.650
				面 積	326.1140113	326.1140113			