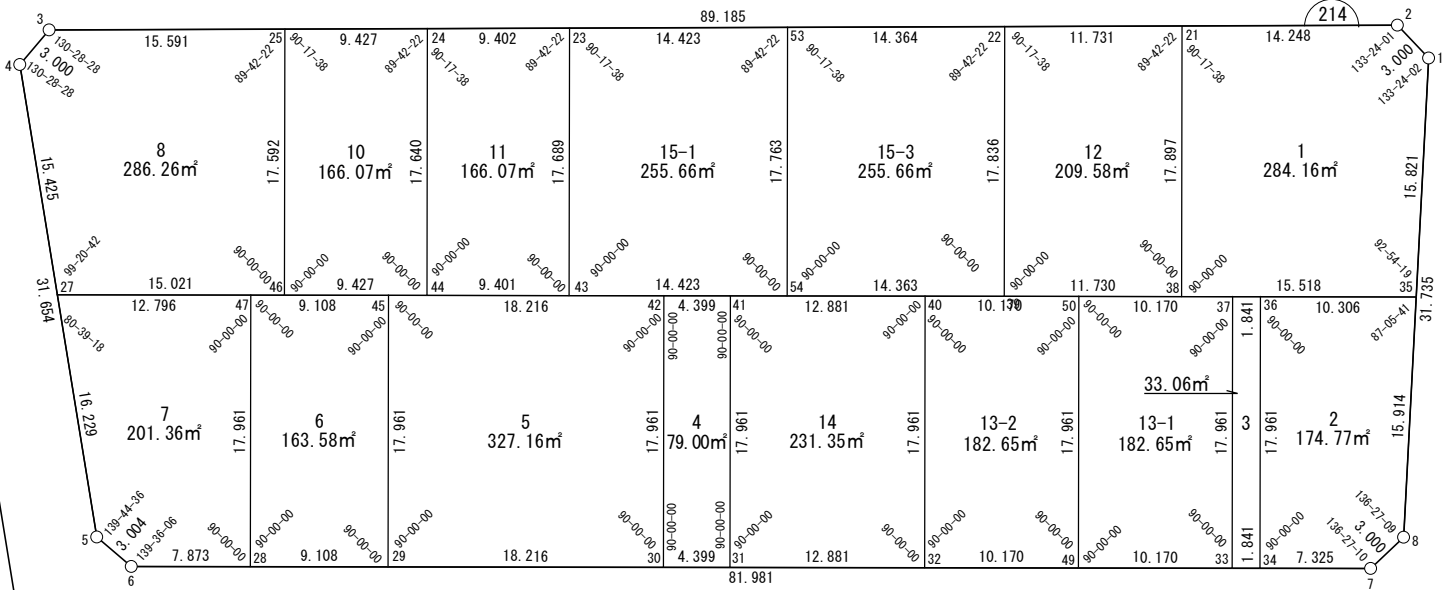


面積一覧表

地番名	地積
W214-1	284.16 m ²
W214-2	174.77 m ²
W214-3	33.06 m ²
W214-4	79.00 m ²
W214-5	327.16 m ²
W214-6	163.58 m ²
W214-7	201.36 m ²
W214-8	286.26 m ²
W214-10	166.07 m ²
W214-11	166.07 m ²
W214-12	209.58 m ²
W214-13-1	182.65 m ²
W214-13-2	182.65 m ²
W214-14	231.35 m ²
W214-15-1	255.66 m ²
W214-15-3	255.66 m ²
合計	3199.04 m ²



座 標 一 覧 表

測 点 名	X 座 標	Y 座 標	測 点 名	X 座 標	Y 座 標
W214-1	-97825.296	-2433.733	W214-34	-97859.512	-2424.117
W214-2	-97824.652	-2436.663	W214-35	-97838.857	-2425.583
W214-5	-97900.822	-2489.061	W214-36	-97844.606	-2434.136
W214-6	-97901.161	-2486.076	W214-37	-97845.633	-2435.664
W214-7	-97855.426	-2418.038	W214-38	-97847.514	-2438.462
W214-8	-97852.498	-2417.386	W214-39	-97854.058	-2448.198
W214-21	-97832.661	-2448.446	W214-40	-97856.980	-2452.545
W214-22	-97839.255	-2458.148	W214-41	-97864.166	-2463.235
W214-23	-97855.437	-2481.956	W214-42	-97866.620	-2466.885
W214-24	-97860.722	-2489.732	W214-43	-97870.118	-2472.088
W214-25	-97866.022	-2497.529	W214-44	-97875.362	-2479.891
W214-27	-97889.002	-2500.181	W214-45	-97876.782	-2482.003
W214-28	-97896.769	-2479.542	W214-46	-97880.622	-2487.715
W214-29	-97891.688	-2471.983	W214-47	-97881.863	-2489.562
W214-30	-97881.526	-2456.866	W214-49	-97866.213	-2434.085
W214-31	-97879.072	-2453.215	W214-50	-97851.307	-2444.104
W214-32	-97871.886	-2442.525	W214-53	-97847.330	-2470.028
W214-33	-97860.539	-2425.644	W214-54	-97862.071	-2460.118

面積（座標法）計算書

地番：W214-1

測点名	[1] X(i)	[2] X(i+1)-X(i-1)	[3] Y(i)	[4] Y(i+1)-Y(i-1)	[2]*[3]	[1]*[4]	方向角	夾角	距離
W214-38	-97847.514	-6.196	-2438.462	22.863	15107.947926	-2237085.827483	56-05-27	90-00-00	15.518
W214-35	-97838.857	22.218	-2425.583	4.730	-53891.377236	-462730.625303	328-59-46	92-54-19	15.821
W214-1	-97825.296	14.205	-2433.733	-11.079	-34570.550100	1083844.393738	282-23-48	133-24-02	3.000
W214-2	-97824.652	-7.365	-2436.663	-14.714	17946.091215	1439357.576681	235-47-49	133-24-01	14.248
W214-21	-97832.661	-22.862	-2448.446	-1.799	55976.214243	176046.156318	146-05-27	90-17-38	17.897
合計				倍面積	568.326048	-568.326048			66.484
				面積	284.1630245	284.1630245			

面積（座標法）計算書

地 番： W214-2

測点名	[1] X(i)	[2] X(i+1)-X(i-1)	[3] Y(i)	[4] Y(i+1)-Y(i-1)	[2]*[3]	[1]*[4]	方向角	夾 角	距 離
W214-34	-97859.512	-10.820	-2424.117	16.099	26228.152387	-1575412.964490	56-05-27	90-00-00	7.325
W214-7	-97855.426	7.015	-2418.038	6.730	-16961.702883	-658612.626955	12-32-37	136-27-10	3.000
W214-8	-97852.498	16.569	-2417.386	-7.546	-40053.611843	738373.732024	328-59-46	136-27-09	15.914
W214-35	-97838.857	7.891	-2425.583	-16.750	-19140.960318	1638826.859633	236-05-27	87-05-41	10.306
W214-36	-97844.606	-20.655	-2434.136	1.467	50277.667057	-143524.544612	146-05-27	90-00-00	17.961
合計				倍面積 面 積	349.544400 174.7722002	-349.544400 174.7722002			54.506

面積（座標法）計算書

地番：W214-3

測点名	[1] X(i)	[2] X(i+1)-X(i-1)	[3] Y(i)	[4] Y(i+1)-Y(i-1)	[2]*[3]	[1]*[4]	方向角	夾角	距離
W214-36	-97844.606	13.879	-2434.136	-11.548	-33783.349901	1129864.357808	236-05-27	90-00-00	1.841
W214-37	-97845.633	-15.933	-2435.664	8.492	38807.158796	-830911.085797	146-05-27	90-00-00	17.961
W214-33	-97860.539	-13.879	-2425.644	11.548	33665.488688	-1130048.343422	56-05-27	90-00-00	1.841
W214-34	-97859.512	15.933	-2424.117	-8.492	-38623.173181	831028.947010	326-05-27	90-00-00	17.961
合計				倍面積	66.124400	-66.124400			39.604
				面積	33.0622005	33.0622005			

面積（座標法）計算書

地 番： W214-4

測点名	[1] X(i)	[2] X(i+1)-X(i-1)	[3] Y(i)	[4] Y(i+1)-Y(i-1)	[2]*[3]	[1]*[4]	方向角	夾 角	距 離
W214-41	-97864.166	12.452	-2463.235	-13.670	-30672.300037	1337835.918813	236-05-27	90-00-00	4.399
W214-42	-97866.620	-17.360	-2466.885	6.369	42824.721214	-623338.409593	146-05-27	90-00-00	17.961
W214-30	-97881.526	-12.452	-2456.866	13.670	30592.989697	-1338073.233554	56-05-27	90-00-00	4.399
W214-31	-97879.072	17.360	-2453.215	-6.369	-42587.406474	623417.719933	326-05-27	90-00-00	17.961
合計				倍面積	158.004400	-158.004400			44.720
				面 積	79.0022000	79.0022000			

面 積 (座 標 法) 計 算 書

地 番 : W214-5

測点名	[1] X(i)	[2] X(i+1)-X(i-1)	[3] Y(i)	[4] Y(i+1)-Y(i-1)	[2]*[3]	[1]*[4]	方向角	夾 角	距 離
W214-42	-97866.620	4.744	-2466.885	-25.137	-11702.689654	2460104.217507	236-05-27	90-00-00	18.216
W214-45	-97876.782	-25.068	-2482.003	-5.098	62218.753531	498948.136845	146-05-27	90-00-00	17.961
W214-29	-97891.688	-4.744	-2471.983	25.137	11726.872779	-2460734.358781	56-05-27	90-00-00	18.216
W214-30	-97881.526	25.068	-2456.866	5.098	-61588.612256	-498972.319970	326-05-27	90-00-00	17.961
合計				倍面積	654.324400	-654.324400			72.354
				面 積	327.1622001	327.1622001			

面積（座標法）計算書

地番：W214-6

測点名	[1] X(i)	[2] X(i+1)-X(i-1)	[3] Y(i)	[4] Y(i+1)-Y(i-1)	[2]*[3]	[1]*[4]	方向角	夾角	距離
W214-45	-97876.782	9.825	-2482.003	-17.579	-24385.408000	1720537.685572	236-05-27	90-00-00	9.108
W214-47	-97881.863	-19.987	-2489.562	2.461	49758.829160	-240886.335725	146-05-27	90-00-00	17.961
W214-28	-97896.769	-9.825	-2479.542	17.579	24361.229037	-1720889.028935	56-05-27	90-00-00	9.108
W214-29	-97891.688	19.987	-2471.983	-2.461	-49407.485797	240910.514688	326-05-27	90-00-00	17.961
合計				倍面積	327.164399	-327.164399			54.138
				面積	163.5821999	163.5821999			

面積（座標法）計算書

地 番： W214-7

測点名	[1] X(i)	[2] X(i+1)-X(i-1)	[3] Y(i)	[4] Y(i+1)-Y(i-1)	[2]*[3]	[1]*[4]	方向角	夾 角	距 離
W214-47	-97881.863	7.767	-2489.562	-20.639	-19337.566941	2020217.526496	236-05-27	90-00-00	12.796
W214-27	-97889.002	-18.958	-2500.181	0.501	47399.221572	-49045.306987	136-44-45	80-39-18	16.229
W214-5	-97900.822	-12.159	-2489.061	14.106	30265.442533	-1380960.206965	96-29-21	139-44-36	3.004
W214-6	-97901.161	4.052	-2486.076	9.519	-10074.514850	-931898.626124	56-05-27	139-36-06	7.873
W214-28	-97896.769	19.298	-2479.542	-3.486	-47849.857914	341283.889181	326-05-27	90-00-00	17.961
合計				倍面積	402.724400	-402.724400			57.863
				面 積	201.3622001	201.3622001			

面積（座標法）計算書

地番：W214-8

測点名	[1] X(i)	[2] X(i+1)-X(i-1)	[3] Y(i)	[4] Y(i+1)-Y(i-1)	[2]*[3]	[1]*[4]	方向角	夾角	距離
W214-3	-97874.786	-11.746	-2510.423	-13.222	29487.556878	1294105.102716	186-16-17	130-28-28	3.000
W214-4	-97877.768	-14.216	-2510.751	10.242	35693.436465	-1002450.852841	136-44-45	130-28-28	15.425
W214-27	-97889.002	-2.854	-2500.181	23.036	7135.666218	-2254997.475209	56-05-27	99-20-42	15.021
W214-46	-97880.622	22.980	-2487.715	2.652	-57168.287205	-259625.255909	326-05-27	90-00-00	17.592
W214-25	-97866.022	5.836	-2497.529	-22.709	-14575.843554	2222395.952443	235-47-49	89-42-22	15.591
合計				倍面積	572.528801	-572.528801			66.629
				面積	286.2644009	286.2644009			

面積（座標法）計算書

地 番： W214-10

測点名	[1] X(i)	[2] X(i+1)-X(i-1)	[3] Y(i)	[4] Y(i+1)-Y(i-1)	[2]*[3]	[1]*[4]	方向角	夾 角	距 離
W214-24	-97860.722	9.341	-2489.732	-17.638	-23256.339432	1726074.737847	235-47-49	89-42-22	9.427
W214-25	-97866.022	-19.899	-2497.529	2.017	49699.502745	-197430.977649	146-05-27	90-17-38	17.592
W214-46	-97880.622	-9.341	-2487.715	17.638	23237.495474	-1726425.726205	56-05-27	90-00-00	9.427
W214-44	-97875.362	19.899	-2479.891	-2.017	-49348.514387	197449.821607	326-05-27	90-00-00	17.640
合計				倍面積	332.144400	-332.144400			54.086
				面 積	166.0722001	166.0722001			

面積（座標法）計算書

地 番： W214-11

測点名	[1] X(i)	[2] X(i+1)-X(i-1)	[3] Y(i)	[4] Y(i+1)-Y(i-1)	[2]*[3]	[1]*[4]	方向角	夾 角	距 離
W214-23	-97855.437	9.395	-2481.956	-17.644	-23319.066625	1726528.671860	235-47-49	89-42-22	9.402
W214-24	-97860.722	-19.925	-2489.732	2.066	49608.230853	-202148.486439	146-05-27	90-17-38	17.640
W214-44	-97875.362	-9.395	-2479.891	17.644	23299.658701	-1726880.224185	56-05-27	90-00-00	9.401
W214-43	-97870.118	19.925	-2472.088	-2.066	-49256.678527	202167.894363	326-05-27	90-00-00	17.689
合計				倍面積	332.144400	-332.144400			54.132
				面 積	166.0722005	166.0722005			

面積（座標法）計算書

地 番： W214-12

測点名	[1] X(i)	[2] X(i+1)-X(i-1)	[3] Y(i)	[4] Y(i+1)-Y(i-1)	[2]*[3]	[1]*[4]	方向角	夾 角	距 離
W214-21	-97832.661	8.259	-2448.446	-19.686	-20221.207312	1925923.614782	235-47-49	89-42-22	11.731
W214-22	-97839.255	-21.397	-2458.148	0.249	52596.985556	-24340.538002	146-05-27	90-17-38	17.836
W214-39	-97854.058	-8.259	-2448.198	19.686	20219.152683	-1926344.833812	56-05-27	90-00-00	11.730
W214-38	-97847.514	21.397	-2438.462	-0.249	-52175.766526	24342.592632	326-05-27	90-00-00	17.897
合計				倍面積	419.164400	-419.164400			59.194
				面 積	209.5822005	209.5822005			

面積（座標法）計算書

地番：W214-13-1

測点名	[1] X(i)	[2] X(i+1)-X(i-1)	[3] Y(i)	[4] Y(i+1)-Y(i-1)	[2]*[3]	[1]*[4]	方向角	夾角	距離
W214-37	-97845.633	9.232	-2435.664	-18.460	-22487.025321	1806233.025983	236-05-27	90-00-00	10.170
W214-50	-97851.307	-20.579	-2444.104	1.580	50298.382037	-154563.247903	146-05-27	90-00-00	17.961
W214-49	-97866.213	-9.232	-2434.085	18.460	22472.442075	-1806612.923629	56-05-27	90-00-00	10.170
W214-33	-97860.539	20.579	-2425.644	-1.580	-49918.484391	154577.831149	326-05-27	90-00-00	17.961
合計				倍面積	365.314399	-365.314399			56.262
				面積	182.6571996	182.6571996			

面積（座標法）計算書

地番：W214-13-2

測点名	[1] X(i)	[2] X(i+1)-X(i-1)	[3] Y(i)	[4] Y(i+1)-Y(i-1)	[2]*[3]	[1]*[4]	方向角	夾角	距離
W214-50	-97851.307	9.232	-2444.104	-18.460	-22564.948874	1806337.759630	236-05-27	90-00-00	10.170
W214-40	-97856.980	-20.579	-2452.545	1.580	50472.077472	-154572.209667	146-05-27	90-00-00	17.961
W214-32	-97871.886	-9.232	-2442.525	18.460	22550.365628	-1806717.657275	56-05-27	90-00-00	10.170
W214-49	-97866.213	20.579	-2434.085	-1.580	-50092.179827	154586.792913	326-05-27	90-00-00	17.961
合計				倍面積	365.314399	-365.314399			56.262
				面積	182.6571996	182.6571996			

面積（座標法）計算書

地番：W214-14

測点名	[1] X(i)	[2] X(i+1)-X(i-1)	[3] Y(i)	[4] Y(i+1)-Y(i-1)	[2]*[3]	[1]*[4]	方向角	夾角	距離
W214-40	-97856.980	7.720	-2452.545	-20.710	-18933.346638	2026630.430791	236-05-27	90-00-00	12.881
W214-41	-97864.166	-22.092	-2463.235	-0.671	54417.773906	65620.556078	146-05-27	90-00-00	17.961
W214-31	-97879.072	-7.720	-2453.215	20.710	18938.523024	-2027087.958806	56-05-27	90-00-00	12.881
W214-32	-97871.886	22.092	-2442.525	0.671	-53960.245891	-65625.732464	326-05-27	90-00-00	17.961
合計				倍面積	462.704401	-462.704401			61.684
				面積	231.3522007	231.3522007			

面積（座標法）計算書

地 番： W214-15-1

測点名	[1] X(i)	[2] X(i+1)-X(i-1)	[3] Y(i)	[4] Y(i+1)-Y(i-1)	[2]*[3]	[1]*[4]	方向角	夾 角	距 離
W214-23	-97855.437	-22.788	-2481.956	-2.061	56559.091268	201655.361031	146-05-27	90-17-38	17.689
W214-43	-97870.118	-6.634	-2472.088	21.838	16399.666618	-2137316.995220	56-05-27	90-00-00	14.423
W214-54	-97862.071	22.788	-2460.118	2.061	-56061.437730	-201669.031892	326-05-27	90-00-00	17.763
W214-53	-97847.330	6.634	-2470.028	-21.838	-16385.995758	2136819.341681	235-47-49	89-42-22	14.423
合計				倍面積	511.324399	-511.324399			64.298
				面 積	255.6621995	255.6621995			

面積（座標法）計算書

地番：W214-15-3

測点名	[1] X(i)	[2] X(i+1)-X(i-1)	[3] Y(i)	[4] Y(i+1)-Y(i-1)	[2]*[3]	[1]*[4]	方向角	夾角	距離
W214-53	-97847.330	-22.816	-2470.028	-1.970	56355.883507	192754.311834	146-05-27	90-17-38	17.763
W214-54	-97862.071	-6.729	-2460.118	21.830	16553.533055	-2136321.104662	56-05-27	90-00-00	14.363
W214-39	-97854.058	22.816	-2448.198	1.970	-55857.814417	-192767.567143	326-05-27	90-00-00	17.836
W214-22	-97839.255	6.729	-2458.148	-21.830	-16540.277746	2135823.035572	235-47-49	89-42-22	14.364
合計				倍面積	511.324399	-511.324399			64.326
				面積	255.6621996	255.6621996			