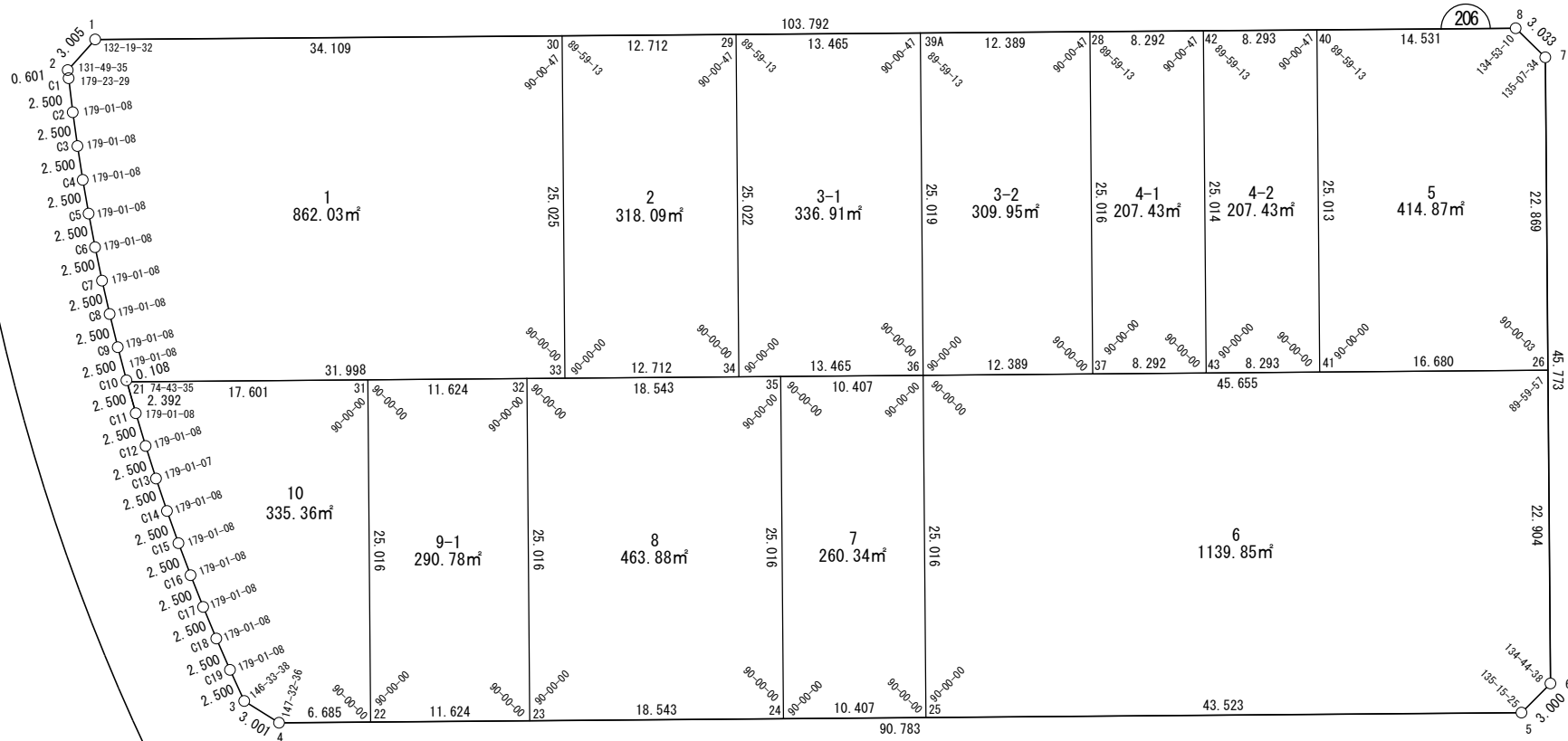


世界測地系

面積一覧表

地番名	地積
W206-1	862.03㎡
W206-2	318.09㎡
W206-3-1	336.91㎡
W206-3-2	309.95㎡
W206-4-1	207.43㎡
W206-4-2	207.43㎡
W206-5	414.87㎡
W206-6	1139.85㎡
W206-7	260.34㎡
W206-8	463.88㎡
W206-9-1	290.78㎡
W206-10	335.36㎡
合計	5146.92㎡



座 標 一 覧 表

測 点 名	X 座 標	Y 座 標
W206-1	-97616.880	-2719.945
W206-2	-97618.433	-2722.517
W206-3	-97666.303	-2723.668
W206-4	-97668.567	-2721.699
W206-5	-97694.401	-2634.670
W206-6	-97692.982	-2632.026
W206-7	-97649.102	-2619.000
W206-8	-97646.439	-2620.451
W206-21	-97641.479	-2725.045
W206-22	-97670.469	-2715.290

測 点 名	X 座 標	Y 座 標
W206-23	-97673.777	-2704.147
W206-24	-97679.054	-2686.370
W206-25	-97682.015	-2676.394
W206-26	-97671.025	-2625.508
W206-28	-97637.577	-2650.279
W206-29	-97630.214	-2675.063
W206-30	-97626.594	-2687.248
W206-31	-97646.487	-2708.172
W206-32	-97649.795	-2697.028
W206-33	-97650.584	-2694.370
W206-34	-97654.202	-2682.184
W206-35	-97655.072	-2679.252
W206-36	-97658.033	-2669.275
W206-37	-97661.559	-2657.398
W206-39A	-97634.049	-2662.155
W206-40	-97642.300	-2634.380

測 点 名	X 座 標	Y 座 標
W206-41	-97666.279	-2641.498
W206-42	-97639.939	-2642.330
W206-43	-97663.919	-2649.448
W206-C1	-97619.023	-2722.629
W206-C2	-97621.485	-2723.067
W206-C3	-97623.953	-2723.462
W206-C4	-97626.428	-2723.816
W206-C5	-97628.909	-2724.127
W206-C6	-97631.394	-2724.395
W206-C7	-97633.884	-2724.621
W206-C8	-97636.377	-2724.804
W206-C9	-97638.873	-2724.945
W206-C10	-97641.371	-2725.043
W206-C11	-97643.871	-2725.097
W206-C12	-97646.370	-2725.110
W206-C13	-97648.870	-2725.079

測 点 名	X 座 標	Y 座 標
W206-C14	-97651.369	-2725.005
W206-C15	-97653.866	-2724.889
W206-C16	-97656.361	-2724.730
W206-C17	-97658.853	-2724.529
W206-C18	-97661.341	-2724.284
W206-C19	-97663.825	-2723.997

面積（座標法）計算書

地 番： W206-1

測点名	[1] X(i)	[2] X(i+1)-X(i-1)	[3] Y(i)	[4] Y(i+1)-Y(i-1)	[2]*[3]	[1]*[4]	方向角	夾 角	距 離
W206-30	-97626.594	33.705	-2687.248	-25.575	-90572.507741	2496836.537939	286-32-46	90-00-47	34.109
W206-1	-97616.880	8.161	-2719.945	-35.269	-22196.324565	3442831.302710	238-52-18	132-19-32	3.005
W206-2	-97618.433	-2.144	-2722.517	-2.684	5836.031487	261968.680603	190-41-53	131-49-35	0.601
W206-C1	-97619.023	-3.052	-2722.629	-0.549	8308.408064	53639.339782	190-05-22	179-23-29	2.500
W206-C2	-97621.485	-4.930	-2723.067	-0.834	13424.051341	81387.949435	189-06-30	179-01-08	2.500
W206-C3	-97623.953	-4.943	-2723.462	-0.749	13462.913104	73137.405573	188-07-38	179-01-08	2.500
W206-C4	-97626.428	-4.955	-2723.816	-0.664	13497.627623	64865.000109	187-08-46	179-01-08	2.500
W206-C5	-97628.909	-4.966	-2724.127	-0.579	13528.181502	56573.160322	186-09-54	179-01-08	2.500
W206-C6	-97631.394	-4.975	-2724.395	-0.494	13554.563676	48264.313973	185-11-02	179-01-08	2.500
W206-C7	-97633.884	-4.983	-2724.621	-0.409	13576.763505	39940.889315	184-12-10	179-01-08	2.500
W206-C8	-97636.377	-4.989	-2724.804	-0.324	13594.772686	31605.334618	183-13-18	179-01-08	2.500
W206-C9	-97638.873	-4.994	-2724.945	-0.238	13608.584169	23260.088886	182-14-26	179-01-08	2.500
W206-C10	-97641.371	-2.606	-2725.043	-0.100	7100.503814	9773.705968	181-15-34	179-01-08	0.108
W206-21	-97641.479	-9.213	-2725.045	30.673	25106.362977	-2994946.434099	106-31-59	105-16-25	31.998
W206-33	-97650.584	14.885	-2694.370	37.797	-40105.861647	-3690861.345137	16-31-59	90-00-00	25.025
合計				倍面積 面積	1724.069999 862.0349995	-1724.069999 862.0349995			117.346

面積（座標法）計算書

地番：W206-2

測点名	[1] X(i)	[2] X(i+1)-X(i-1)	[3] Y(i)	[4] Y(i+1)-Y(i-1)	[2]*[3]	[1]*[4]	方向角	夾角	距離
W206-29	-97630.214	27.608	-2675.063	-5.065	-73853.088469	494475.476157	286-32-46	90-00-47	12.712
W206-30	-97626.594	-20.371	-2687.248	-19.307	54740.664893	1884843.001765	196-31-59	89-59-13	25.025
W206-33	-97650.584	-27.608	-2694.370	5.065	74386.106246	-494578.648381	106-31-59	90-00-00	12.712
W206-34	-97654.202	20.371	-2682.184	19.307	-54637.492670	-1885376.019543	16-31-59	90-00-00	25.022
合計				倍面積	636.190000	-636.190000			75.471
				面積	318.0950004	318.0950004			

面積（座標法）計算書

地番：W206-3-1

測点名	[1] X(i)	[2] X(i+1)-X(i-1)	[3] Y(i)	[4] Y(i+1)-Y(i-1)	[2]*[3]	[1]*[4]	方向角	夾角	距離
W206-39A	-97634.049	27.820	-2662.155	-5.788	-74060.181389	565119.620055	286-32-46	90-00-47	13.465
W206-29	-97630.214	-20.153	-2675.063	-20.028	53910.720991	1955366.478872	196-31-59	89-59-13	25.022
W206-34	-97654.202	-27.820	-2682.184	5.788	74617.361138	-565236.268839	106-31-59	90-00-00	13.465
W206-36	-97658.033	20.153	-2669.275	20.028	-53794.072208	-1955923.658620	16-31-59	90-00-00	25.019
合計				倍面積	673.828532	-673.828532			76.971
				面積	336.9142663	336.9142663			

面積（座標法）計算書

地番：W206-3-2

測点名	[1] X(i)	[2] X(i+1)-X(i-1)	[3] Y(i)	[4] Y(i+1)-Y(i-1)	[2]*[3]	[1]*[4]	方向角	夾角	距離
W206-36	-97658.033	-27.510	-2669.275	4.757	73432.923713	-464605.398707	106-31-59	90-00-00	12.389
W206-37	-97661.559	20.457	-2657.398	18.996	-54361.115423	-1855171.250103	16-31-59	90-00-00	25.016
W206-28	-97637.577	27.510	-2650.279	-4.757	-72910.337585	464508.077368	286-32-46	90-00-47	12.389
W206-39A	-97634.049	-20.457	-2662.155	-18.996	54458.436761	1854648.663974	196-31-59	89-59-13	25.019
合計				倍面積	619.907467	-619.907467			74.813
				面積	309.9537338	309.9537338			

面積（座標法）計算書

地 番： W206-4-1

測点名	[1] X(i)	[2] X(i+1)-X(i-1)	[3] Y(i)	[4] Y(i+1)-Y(i-1)	[2]*[3]	[1]*[4]	方向角	夾 角	距 離
W206-28	-97637.577	-21.621	-2650.279	-15.068	57300.365158	1471194.691195	196-31-59	89-59-13	25.016
W206-37	-97661.559	-26.342	-2657.398	0.831	70000.820189	-81140.032853	106-31-59	90-00-00	8.292
W206-43	-97663.919	21.621	-2649.448	15.068	-57282.402222	-1471591.608215	16-31-59	90-00-00	25.014
W206-42	-97639.939	26.342	-2642.330	-0.831	-69603.903168	81122.069917	286-32-46	90-00-47	8.292
合計				倍面積	414.879956	-414.879956			66.614
				面 積	207.4399785	207.4399785			

面積（座標法）計算書

地番：W206-4-2

測点名	[1] X(i)	[2] X(i+1)-X(i-1)	[3] Y(i)	[4] Y(i+1)-Y(i-1)	[2]*[3]	[1]*[4]	方向角	夾角	距離
W206-42	-97639.939	-21.618	-2642.330	-15.068	57123.159871	1471236.505710	196-31-59	89-59-13	25.014
W206-43	-97663.919	-26.340	-2649.448	0.832	69787.015602	-81254.934781	106-31-59	90-00-00	8.293
W206-41	-97666.279	21.618	-2641.498	15.068	-57105.173614	-1471633.399410	16-31-59	90-00-00	25.013
W206-40	-97642.300	26.340	-2634.380	-0.832	-69390.121902	81236.948524	286-32-46	90-00-47	8.293
合計				倍面積	414.879956	-414.879956			66.613
				面積	207.4399784	207.4399784			

面積（座標法）計算書

地番：W206-5

測点名	[1] X(i)	[2] X(i+1)-X(i-1)	[3] Y(i)	[4] Y(i+1)-Y(i-1)	[2]*[3]	[1]*[4]	方向角	夾角	距離
W206-40	-97642.300	-19.840	-2634.380	-21.047	52266.301223	2055107.899446	196-31-59	89-59-13	25.013
W206-41	-97666.279	-28.725	-2641.498	8.873	75876.909520	-866548.835246	106-31-59	90-00-00	16.680
W206-26	-97671.025	17.177	-2625.508	22.498	-45097.167537	-2197433.403899	16-32-02	90-00-03	22.869
W206-7	-97649.102	24.587	-2619.000	5.057	-64392.311663	-493815.308235	331-25-12	134-53-10	3.033
W206-8	-97646.439	6.802	-2620.451	-15.381	-17823.971629	1501859.888020	286-32-46	135-07-34	14.531
合計				倍面積	829.759913	-829.759913			82.126
				面積	414.8799568	414.8799568			

面積（座標法）計算書

地番：W206-6

測点名	[1] X(i)	[2] X(i+1)-X(i-1)	[3] Y(i)	[4] Y(i+1)-Y(i-1)	[2]*[3]	[1]*[4]	方向角	夾角	距離
W206-25	-97682.015	-36.367	-2676.394	34.605	97333.055876	-3380303.959947	106-31-59	90-00-00	43.523
W206-5	-97694.401	-10.967	-2634.670	44.368	28894.480198	-4334494.598747	61-47-24	135-15-25	3.000
W206-6	-97692.982	23.375	-2632.026	9.162	-61524.713737	-895072.366200	16-32-02	134-44-38	22.904
W206-26	-97671.025	34.949	-2625.508	-37.249	-91758.815824	3638159.642590	286-31-59	89-59-57	45.655
W206-36	-97658.033	-10.990	-2669.275	-50.886	29335.703490	4969431.572300	196-31-59	90-00-00	25.016
合計				倍面積	2279.710003	-2279.710003			140.098
				面積	1139.8550018	1139.8550018			

面積（座標法）計算書

地番：W206-7

測点名	[1] X(i)	[2] X(i+1)-X(i-1)	[3] Y(i)	[4] Y(i+1)-Y(i-1)	[2]*[3]	[1]*[4]	方向角	夾角	距離
W206-36	-97658.033	26.943	-2669.275	-2.858	-71919.454483	279103.856773	286-31-59	90-00-00	10.407
W206-35	-97655.072	-21.020	-2679.252	-17.096	56319.144350	1669463.923164	196-31-59	90-00-00	25.016
W206-24	-97679.054	-26.943	-2686.370	2.858	72380.066564	-279163.932690	106-31-59	90-00-00	10.407
W206-25	-97682.015	21.020	-2676.394	17.096	-56259.068433	-1669924.535244	16-31-59	90-00-00	25.016
合計				倍面積	520.687998	-520.687998			70.846
				面積	260.3439992	260.3439992			

面積（座標法）計算書

地番：W206-8

測点名	[1] X(i)	[2] X(i+1)-X(i-1)	[3] Y(i)	[4] Y(i+1)-Y(i-1)	[2]*[3]	[1]*[4]	方向角	夾角	距離
W206-35	-97655.072	29.259	-2679.252	-10.658	-78391.624359	1040802.434665	286-31-59	90-00-00	18.543
W206-32	-97649.795	-18.705	-2697.028	-24.895	50448.298353	2431039.595932	196-31-59	90-00-00	25.016
W206-23	-97673.777	-29.259	-2704.147	10.658	79120.035973	-1041001.793052	106-31-59	90-00-00	18.543
W206-24	-97679.054	18.705	-2686.370	24.895	-50248.939966	-2431768.007547	16-31-59	90-00-00	25.016
合計				倍面積	927.770001	-927.770001			87.118
				面積	463.8850008	463.8850008			

面積（座標法）計算書

地番：W206-9-1

測点名	[1] X(i)	[2] X(i+1)-X(i-1)	[3] Y(i)	[4] Y(i+1)-Y(i-1)	[2]*[3]	[1]*[4]	方向角	夾角	距離
W206-32	-97649.795	27.290	-2697.028	-4.025	-73601.140710	392992.840672	286-31-59	90-00-00	11.624
W206-31	-97646.487	-20.674	-2708.172	-18.262	55989.285834	1783225.845268	196-31-59	90-00-00	25.016
W206-22	-97670.469	-27.290	-2715.290	4.025	74099.507122	-393076.044260	106-31-59	90-00-00	11.624
W206-23	-97673.777	20.674	-2704.147	18.262	-55906.082247	-1783724.211680	16-31-59	90-00-00	25.016
合計				倍面積	581.569999	-581.569999			73.280
				面積	290.7849996	290.7849996			

面 積 (座 標 法) 計 算 書

地 番 : W206-10

測点名	[1] X(i)	[2] X(i+1)-X(i-1)	[3] Y(i)	[4] Y(i+1)-Y(i-1)	[2]*[3]	[1]*[4]	方向角	夾 角	距 離
W206-31	-97646.487	28.991	-2708.172	-9.755	-78511.543061	952495.766277	286-31-59	90-00-00	17.601
W206-21	-97641.479	2.617	-2725.045	-16.926	-7131.099151	1652668.293716	181-15-34	74-43-35	2.392
W206-C11	-97643.871	-4.892	-2725.097	-0.065	13330.400494	6319.345304	180-16-42	179-01-08	2.500
W206-C12	-97646.370	-5.000	-2725.110	0.019	13624.788611	-1809.348185	179-17-50	179-01-08	2.500
W206-C13	-97648.870	-4.999	-2725.079	0.104	13621.773124	-10168.889693	178-18-57	179-01-07	2.500
W206-C14	-97651.369	-4.996	-2725.005	0.190	13614.550039	-18525.880665	177-20-05	179-01-08	2.500
W206-C15	-97653.866	-4.992	-2724.889	0.275	13603.121471	-26877.859566	176-21-13	179-01-08	2.500
W206-C16	-97656.361	-4.987	-2724.730	0.361	13587.491882	-35222.383889	175-22-21	179-01-08	2.500
W206-C17	-97658.853	-4.980	-2724.529	0.446	13567.667805	-43557.020392	174-23-29	179-01-08	2.500
W206-C18	-97661.341	-4.971	-2724.284	0.531	13543.656751	-51879.286511	173-24-37	179-01-08	2.500
W206-C19	-97663.825	-4.962	-2723.997	0.616	13515.467756	-60186.767545	172-25-45	179-01-08	2.500
W206-3	-97666.303	-4.742	-2723.668	2.298	12916.890213	-224476.552517	138-59-23	146-33-38	3.001
W206-4	-97668.567	-4.167	-2721.699	8.378	11340.219917	-818228.196876	106-31-59	147-32-36	6.685
W206-22	-97670.469	22.080	-2715.290	13.527	-59952.655854	-1321221.949454	16-31-59	90-00-00	25.016
合計				倍面積	670.730000	-670.730000			77.195
				面 積	335.3650005	335.3650005			