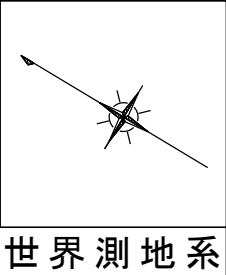
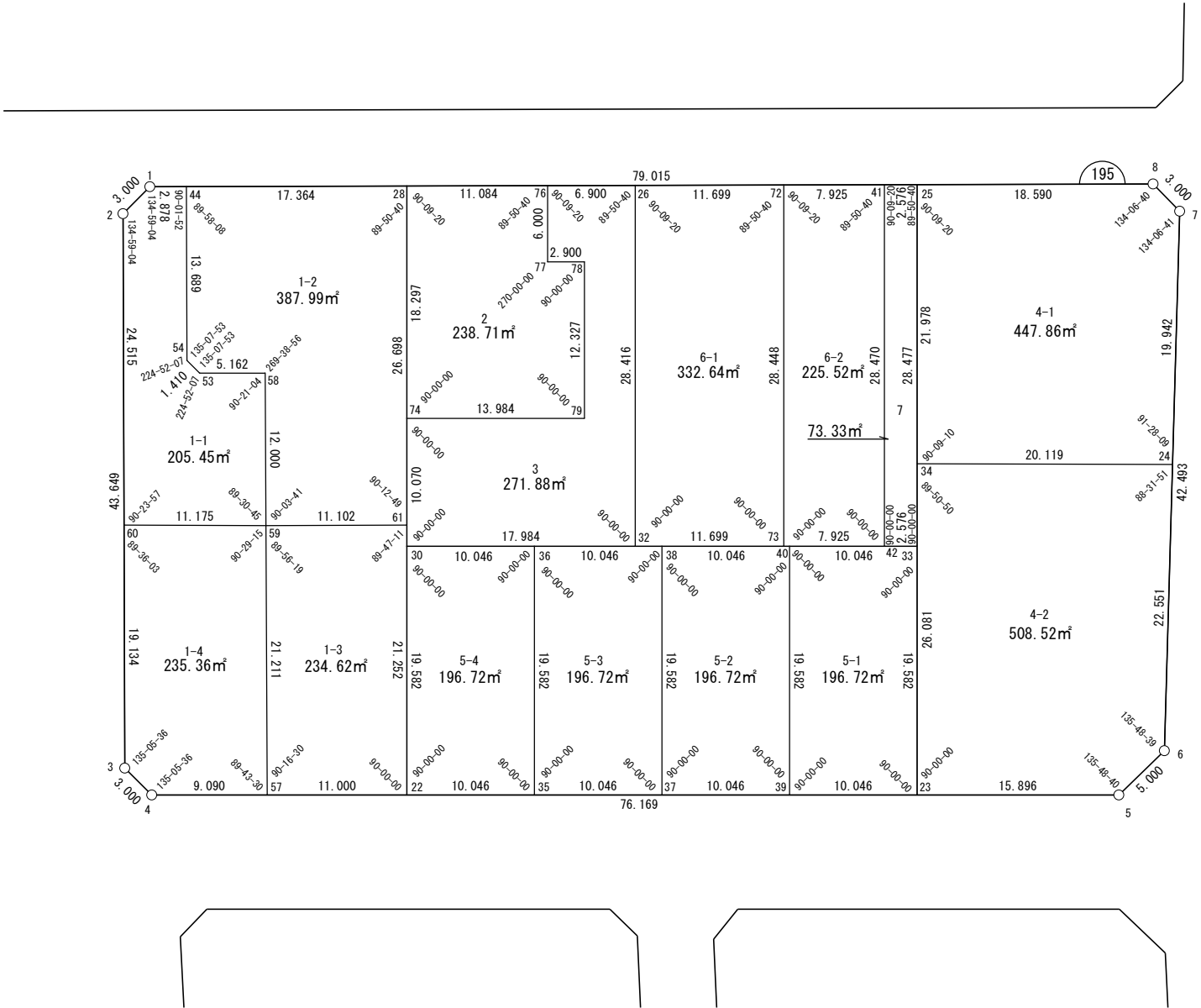


面積一覧表

地番名	地積
W195-1-1	205.45㎡
W195-1-2	387.99㎡
W195-1-3	234.62㎡
W195-1-4	235.36㎡
W195-2	271.88㎡
W195-3	238.71㎡
W195-4-1	447.86㎡
W195-4-2	508.52㎡
W195-5-1	196.72㎡
W195-5-2	196.72㎡
W195-5-3	196.72㎡
W195-5-4	196.72㎡
W195-6-1	332.64㎡
W195-6-2	225.52㎡
W195-7	73.33㎡
合計	3948.76㎡

座 標 一 覧 表

測 点 名	X 座 標	Y 座 標
W195-1	-97828.144	-2365.643
W195-2	-97827.427	-2368.556
W195-3	-97850.033	-2405.896
W195-4	-97852.945	-2406.617
W195-5	-97918.232	-2367.383
W195-6	-97919.510	-2362.549
W195-7	-97898.662	-2325.522
W195-8	-97895.760	-2324.759
W195-22	-97870.165	-2396.269
W195-23	-97904.607	-2375.571
W195-24	-97908.446	-2342.899
W195-25	-97879.852	-2334.378
W195-26	-97860.855	-2345.864
W195-28	-97845.466	-2355.169
W195-30	-97860.078	-2379.484
W195-32	-97875.493	-2370.221
W195-33	-97894.520	-2358.786
W195-34	-97891.173	-2353.216
W195-35	-97878.775	-2391.094
W195-36	-97868.689	-2374.310
W195-37	-97887.386	-2385.920
W195-38	-97877.299	-2369.135
W195-39	-97895.997	-2380.745
W195-40	-97885.910	-2363.961
W195-41	-97877.648	-2335.710
W195-42	-97892.313	-2360.113
W195-44	-97830.607	-2364.154
W195-53	-97839.065	-2376.204
W195-54	-97837.697	-2375.865
W195-57	-97860.736	-2401.935
W195-58	-97843.493	-2373.551
W195-59	-97849.724	-2383.807
W195-60	-97840.124	-2389.528
W195-61	-97859.218	-2378.053
W195-72	-97870.867	-2339.811
W195-73	-97885.521	-2364.194
W195-74	-97854.891	-2370.852
W195-76	-97854.951	-2349.434
W195-77	-97858.041	-2354.577
W195-78	-97860.527	-2353.084
W195-79	-97866.877	-2363.650



# 面積（座標法）計算書

地 番： W195-1-1

測点名	[1] X(i)	[2] X(i+1)-X(i-1)	[3] Y(i)	[4] Y(i+1)-Y(i-1)	[2]*[3]	[1]*[4]	方向角	夾 角	距 離
W195-60	-97840.124	-22.296	-2389.528	-15.251	53277.179786	1492141.890960	149-12-31	90-23-57	11.175
W195-59	-97849.724	-3.370	-2383.807	15.977	8032.245298	-1563305.675222	58-43-16	89-30-45	12.000
W195-58	-97843.493	10.658	-2373.551	7.603	-25298.165854	-743888.558277	329-04-20	90-21-04	5.162
W195-53	-97839.065	5.796	-2376.204	-2.313	-13773.334677	226326.438009	13-56-27	224-52-07	1.410
W195-54	-97837.697	8.458	-2375.865	12.050	-20095.174045	-1178977.797160	58-48-34	224-52-07	13.689
W195-44	-97830.607	9.552	-2364.154	10.222	-22583.282568	-999976.439312	328-50-26	90-01-52	2.878
W195-1	-97828.144	3.180	-2365.643	-4.402	-7522.043571	430675.354169	283-49-30	134-59-04	3.000
W195-2	-97827.427	-11.979	-2368.556	-23.885	28373.482253	2336593.880210	238-48-34	134-59-04	24.515
合計				倍面積	410.906622	-410.906622			73.829
				面 積	205.4533114	205.4533114			

# 面積（座標法）計算書

地 番： W195-1-2

測点名	[1] X(i)	[2] X(i+1)-X(i-1)	[3] Y(i)	[4] Y(i+1)-Y(i-1)	[2]*[3]	[1]*[4]	方向角	夾 角	距 離
W195-59	-97849.724	-15.725	-2383.807	-4.502	37485.161480	440497.873824	148-46-57	90-03-41	11.102
W195-61	-97859.218	4.258	-2378.053	28.638	-10124.597517	-2802458.614655	58-59-46	90-12-49	26.698
W195-28	-97845.466	28.611	-2355.169	13.899	-67383.405112	-1359971.016365	328-50-26	89-50-40	17.364
W195-44	-97830.607	7.769	-2364.154	-20.695	-18367.853229	2024615.859570	238-48-34	89-58-08	13.689
W195-54	-97837.697	-8.458	-2375.865	-12.050	20095.174045	1178977.797160	193-56-27	135-07-53	1.410
W195-53	-97839.065	-5.796	-2376.204	2.313	13773.334677	-226326.438009	149-04-20	135-07-53	5.162
W195-58	-97843.493	-10.658	-2373.551	-7.603	25298.165854	743888.558277	238-43-16	269-38-56	12.000
合計				倍面積	775.980197	-775.980197			87.425
				面 積	387.9900988	387.9900988			

# 面積（座標法）計算書

地番：W195-1-3

測点名	[1] X(i)	[2] X(i+1)-X(i-1)	[3] Y(i)	[4] Y(i+1)-Y(i-1)	[2]*[3]	[1]*[4]	方向角	夾角	距離
W195-57	-97860.736	-20.441	-2401.935	-12.462	49098.476168	1219513.572971	148-59-46	90-16-30	11.000
W195-22	-97870.165	1.518	-2396.269	23.882	-3638.283760	-2337314.229730	58-59-46	90-00-00	21.252
W195-61	-97859.218	20.441	-2378.053	12.462	-48610.303378	-1219494.652185	328-46-57	89-47-11	11.102
W195-59	-97849.724	-1.518	-2383.807	-23.882	3619.362974	2336826.056939	238-43-16	89-56-19	21.211
合計				倍面積	469.252003	-469.252003			64.565
				面積	234.6260019	234.6260019			

面積（座標法）計算書

地番：W195-1-4

測点名	[1] X(i)	[2] X(i+1)-X(i-1)	[3] Y(i)	[4] Y(i+1)-Y(i-1)	[2]*[3]	[1]*[4]	方向角	夾角	距離
W195-3	-97850.033	-12.822	-2405.896	-17.089	30847.306516	1672168.019332	193-54-10	135-05-36	3.000
W195-4	-97852.945	-10.703	-2406.617	3.961	25759.160910	-387620.250930	148-59-46	135-05-36	9.090
W195-57	-97860.736	3.222	-2401.935	22.810	-7738.008902	-2232193.275386	58-43-16	89-43-30	21.211
W195-59	-97849.724	20.613	-2383.807	12.407	-49136.769753	-1214018.255541	329-12-31	90-29-15	11.175
W195-60	-97840.124	-0.309	-2389.528	-22.089	739.041203	2161193.032552	238-48-34	89-36-03	19.134
合計				倍面積	470.729973	-470.729973			63.610
				面積	235.3649868	235.3649868			

# 面積（座標法）計算書

地 番： W195-2

測点名	[1] X(i)	[2] X(i+1)-X(i-1)	[3] Y(i)	[4] Y(i+1)-Y(i-1)	[2]*[3]	[1]*[4]	方向角	夾 角	距 離
W195-74	-97854.891	-21.411	-2370.852	-8.480	50761.409819	829819.137656	148-59-46	90-00-00	13.984
W195-79	-97866.877	-5.636	-2363.650	17.769	13322.143503	-1738983.523179	58-59-46	90-00-00	12.327
W195-78	-97860.527	8.835	-2353.084	9.072	-20790.202233	-887806.439793	328-59-46	90-00-00	2.900
W195-77	-97858.041	5.576	-2354.577	3.649	-13129.850479	-357094.446793	58-59-46	270-00-00	6.000
W195-76	-97854.951	12.575	-2349.434	-0.592	-29544.876546	57936.204574	328-50-26	89-50-40	11.084
W195-28	-97845.466	0.060	-2355.169	-21.418	-141.195461	2095651.638934	238-59-46	90-09-20	18.297
合計				倍面積	477.428601	-477.428601			64.592
				面 積	238.7143006	238.7143006			

# 面積（座標法）計算書

地 番： W195-3

測点名	[1] X(i)	[2] X(i+1)-X(i-1)	[3] Y(i)	[4] Y(i+1)-Y(i-1)	[2]*[3]	[1]*[4]	方向角	夾 角	距 離
W195-30	-97860.078	-20.602	-2379.484	0.632	49021.492776	-61813.762423	148-59-46	90-00-00	17.984
W195-32	-97875.493	-0.777	-2370.221	33.620	1842.531683	-3290568.930720	58-59-46	90-00-00	28.416
W195-26	-97860.855	20.542	-2345.864	20.786	-48188.226060	-2034166.994057	328-50-26	89-50-40	6.900
W195-76	-97854.951	2.814	-2349.434	-8.713	-6611.379861	852624.749915	238-59-46	90-09-20	6.000
W195-77	-97858.041	-5.576	-2354.577	-3.649	13129.850479	357094.446793	148-59-46	90-00-00	2.900
W195-78	-97860.527	-8.835	-2353.084	-9.072	20790.202233	887806.439793	238-59-46	270-00-00	12.327
W195-79	-97866.877	5.636	-2363.650	-17.769	-13322.143503	1738983.523179	328-59-46	270-00-00	13.984
W195-74	-97854.891	6.799	-2370.852	-15.835	-16118.567547	1549496.767320	238-59-46	90-00-00	10.070
合計				倍面積	543.760199	-543.760199			98.581
				面 積	271.8800999	271.8800999			

# 面積（座標法）計算書

地 番： W195-4-1

測点名	[1] X(i)	[2] X(i+1)-X(i-1)	[3] Y(i)	[4] Y(i+1)-Y(i-1)	[2]*[3]	[1]*[4]	方向角	夾 角	距 離
W195-24	-97908.446	-7.488	-2342.899	27.694	17544.762234	-2711502.511987	60-37-05	91-28-09	19.942
W195-7	-97898.662	12.686	-2325.522	18.140	-29500.447514	-1775842.269667	14-43-46	134-06-41	3.000
W195-8	-97895.760	18.809	-2324.759	-8.856	-43727.211762	866967.505943	328-50-26	134-06-40	18.590
W195-25	-97879.852	4.587	-2334.378	-28.457	-10707.978197	2785369.375219	238-59-46	90-09-20	21.978
W195-34	-97891.173	-28.593	-2353.216	-8.521	67286.600186	834112.175544	149-08-56	90-09-10	20.119
合計				倍面積	895.724947	-895.724947			83.629
				面 積	447.8624736	447.8624736			



# 面積（座標法）計算書

地 番： W195-4-2

測点名	[1] X(i)	[2] X(i+1)-X(i-1)	[3] Y(i)	[4] Y(i+1)-Y(i-1)	[2]*[3]	[1]*[4]	方向角	夾 角	距 離
W195-34	-97891.173	3.839	-2353.216	-32.672	-9032.911158	3198307.908979	238-59-46	89-50-50	26.081
W195-23	-97904.607	-27.059	-2375.571	-14.167	64280.261898	1386994.715873	148-59-46	90-00-00	15.896
W195-5	-97918.232	-14.903	-2367.383	13.022	35280.317530	-1275081.200904	104-48-26	135-48-40	5.000
W195-6	-97919.510	9.786	-2362.549	24.484	-23120.548823	-2397483.302944	60-37-05	135-48-39	22.551
W195-24	-97908.446	28.337	-2342.899	9.333	-66390.075511	-913755.164938	329-08-56	88-31-51	20.119
合計				倍面積	1017.043935	-1017.043935			89.647
				面 積	508.5219675	508.5219675			

面積（座標法）計算書

地番：W195-5-1

測点名	[1] X(i)	[2] X(i+1)-X(i-1)	[3] Y(i)	[4] Y(i+1)-Y(i-1)	[2]*[3]	[1]*[4]	方向角	夾角	距離
W195-39	-97895.997	-18.697	-2380.745	-11.610	44513.666347	1136580.842159	148-59-46	90-00-00	10.046
W195-23	-97904.607	1.476	-2375.571	21.959	-3506.690328	-2149907.164845	58-59-46	90-00-00	19.582
W195-33	-97894.520	18.697	-2358.786	11.610	-44103.087060	-1136563.703973	328-59-46	90-00-00	10.046
W195-40	-97885.910	-1.476	-2363.961	-21.959	3489.552141	2149496.585558	238-59-46	90-00-00	19.582
合計				倍面積	393.441099	-393.441099			59.256
				面積	196.7205499	196.7205499			

# 面積（座標法）計算書

地 番： W195-5-2

測点名	[1] X(i)	[2] X(i+1)-X(i-1)	[3] Y(i)	[4] Y(i+1)-Y(i-1)	[2]*[3]	[1]*[4]	方向角	夾 角	距 離
W195-37	-97887.386	-18.697	-2385.920	-11.610	44610.416979	1136480.872241	148-59-46	90-00-00	10.046
W195-39	-97895.997	1.476	-2380.745	21.959	-3514.328735	-2149718.082702	58-59-46	90-00-00	19.582
W195-40	-97885.910	18.697	-2363.961	11.610	-44199.837692	-1136463.734054	328-59-46	90-00-00	10.046
W195-38	-97877.299	-1.476	-2369.135	-21.959	3497.190548	2149307.503416	238-59-46	90-00-00	19.582
合計				倍面積	393.441099	-393.441099			59.256
				面 積	196.7205499	196.7205499			

面積（座標法）計算書

地番：W195-5-3

測点名	[1] X(i)	[2] X(i+1)-X(i-1)	[3] Y(i)	[4] Y(i+1)-Y(i-1)	[2]*[3]	[1]*[4]	方向角	夾角	距離
W195-35	-97878.775	-18.697	-2391.094	-11.610	44707.167611	1136380.902323	148-59-46	90-00-00	10.046
W195-37	-97887.386	1.476	-2385.920	21.959	-3521.967143	-2149529.000560	58-59-46	90-00-00	19.582
W195-38	-97877.299	18.697	-2369.135	11.610	-44296.588324	-1136363.764136	328-59-46	90-00-00	10.046
W195-36	-97868.689	-1.476	-2374.310	-21.959	3504.828956	2149118.421273	238-59-46	90-00-00	19.582
合計				倍面積	393.441099	-393.441099			59.256
				面積	196.7205499	196.7205499			

面積（座標法）計算書

地番：W195-5-4

測点名	[1] X(i)	[2] X(i+1)-X(i-1)	[3] Y(i)	[4] Y(i+1)-Y(i-1)	[2]*[3]	[1]*[4]	方向角	夾角	距離
W195-22	-97870.165	-18.697	-2396.269	-11.610	44803.918243	1136280.932405	148-59-46	90-00-00	10.046
W195-35	-97878.775	1.476	-2391.094	21.959	-3529.605550	-2149339.918418	58-59-46	90-00-00	19.582
W195-36	-97868.689	18.697	-2374.310	11.610	-44393.338956	-1136263.794218	328-59-46	90-00-00	10.046
W195-30	-97860.078	-1.476	-2379.484	-21.959	3512.467363	2148929.339131	238-59-46	90-00-00	19.582
合計				倍面積	393.441099	-393.441099			59.256
				面積	196.7205499	196.7205499			

# 面積（座標法）計算書

地番：W195-6-1

測点名	[1] X(i)	[2] X(i+1)-X(i-1)	[3] Y(i)	[4] Y(i+1)-Y(i-1)	[2]*[3]	[1]*[4]	方向角	夾角	距離
W195-26	-97860.855	-4.626	-2345.864	-30.410	10850.841228	2975961.460319	238-59-46	90-09-20	28.416
W195-32	-97875.493	-24.665	-2370.221	-18.330	58461.716862	1794083.553268	148-59-46	90-00-00	11.699
W195-73	-97885.521	4.626	-2364.194	30.410	-10935.628222	-2976711.529034	58-59-46	90-00-00	28.448
W195-72	-97870.867	24.665	-2339.811	18.330	-57711.648146	-1793998.766274	328-50-26	89-50-40	11.699
合計				倍面積	665.281721	-665.281721			80.262
				面積	332.6408607	332.6408607			

面積（座標法）計算書

地番：W195-6-2

測点名	[1] X(i)	[2] X(i+1)-X(i-1)	[3] Y(i)	[4] Y(i+1)-Y(i-1)	[2]*[3]	[1]*[4]	方向角	夾角	距離
W195-72	-97870.867	-7.872	-2339.811	-28.484	18419.335148	2787769.984491	238-59-46	90-09-20	28.448
W195-73	-97885.521	-21.446	-2364.194	-20.302	50702.296725	1987261.479112	148-59-46	90-00-00	7.925
W195-42	-97892.313	7.872	-2360.113	28.484	-18579.154656	-2788380.853275	58-59-46	90-00-00	28.470
W195-41	-97877.648	21.446	-2335.710	20.302	-50091.427941	-1987101.659604	328-50-26	89-50-40	7.925
合計				倍面積	451.049275	-451.049275			72.768
				面積	225.5246378	225.5246378			

# 面積（座標法）計算書

地番：W195-7

測点名	[1] X(i)	[2] X(i+1)-X(i-1)	[3] Y(i)	[4] Y(i+1)-Y(i-1)	[2]*[3]	[1]*[4]	方向角	夾角	距離
W195-33	-97894.520	12.461	-2358.786	25.735	-29391.911256	-2519303.747448	58-59-46	90-00-00	28.477
W195-25	-97879.852	16.872	-2334.378	23.076	-39385.921575	-2258637.638083	328-50-26	89-50-40	2.576
W195-41	-97877.648	-12.461	-2335.710	-25.735	29104.375040	2518869.545232	238-59-46	90-09-20	28.470
W195-42	-97892.313	-16.872	-2360.113	-23.076	39820.123791	2258925.174298	148-59-46	90-00-00	2.576
合計				倍面積	146.666000	-146.666000			62.099
				面積	73.3330001	73.3330001			