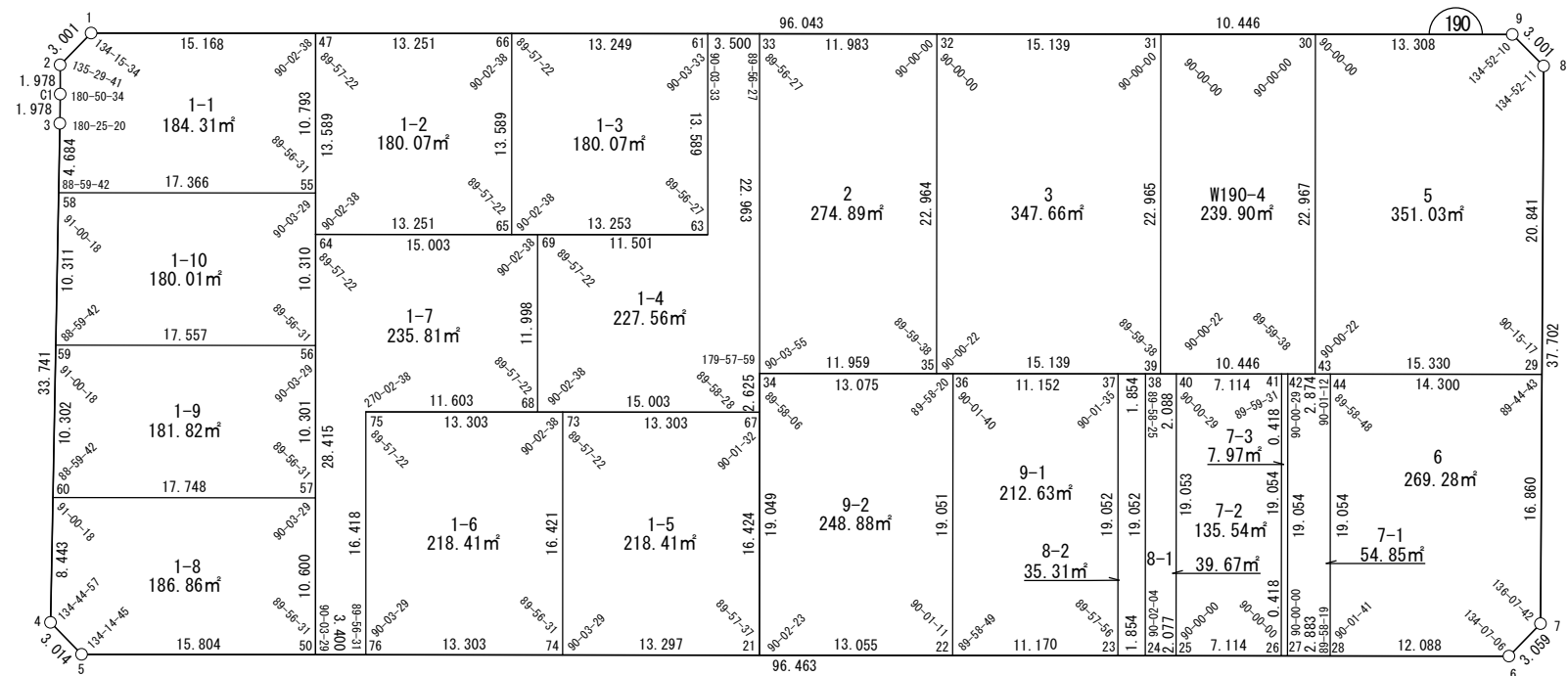


面積一覧表	
地番名	面積
W190-1-1	184.31㎡
W190-1-2	180.07㎡
W190-1-3	180.07㎡
W190-1-4	227.56㎡
W190-1-5	218.41㎡
W190-1-6	218.41㎡
W190-1-7	235.81㎡
W190-1-8	186.86㎡
W190-1-9	181.82㎡
W190-1-10	180.01㎡
W190-2	274.89㎡
W190-3	347.66㎡
W190-4	239.90㎡

地番名	面積
W190-5	351.03㎡
W190-6	269.28㎡
W190-7-1	54.85㎡
W190-7-2	135.54㎡
W190-7-3	7.97㎡
W190-8-1	39.67㎡
W190-8-2	35.31㎡
W190-9-1	212.63㎡
W190-9-2	248.88㎡
合計	4210.94㎡



測点名	X座標	Y座標
W190-42	-97917.911	-2167.849
W190-43	-97919.492	-2166.901
W190-44	-97920.376	-2166.372
W190-47	-97849.731	-2181.947
W190-50	-97871.357	-2217.956
W190-55	-97855.288	-2191.200
W190-56	-97860.596	-2200.038
W190-57	-97865.900	-2208.869
W190-58	-97840.392	-2200.126
W190-59	-97845.536	-2209.062
W190-60	-97850.675	-2217.991
W190-61	-97872.460	-2168.321
W190-63	-97879.459	-2179.969
W190-64	-97856.728	-2193.597
W190-65	-97868.093	-2186.783
W190-66	-97861.096	-2175.133
W190-67	-97888.640	-2188.454
W190-68	-97875.772	-2196.168
W190-69	-97869.595	-2185.882
W190-73	-97877.230	-2195.294
W190-74	-97885.685	-2209.371
W190-75	-97865.821	-2202.134
W190-76	-97874.274	-2216.209
W190-C1	-97837.056	-2194.359

座標一覧表			
測点名	X座標	Y座標	
W190-1	-97836.722	-2189.746	
W190-2	-97836.031	-2192.666	
W190-3	-97838.055	-2196.066	
W190-4	-97854.887	-2225.308	
W190-5	-97857.801	-2226.079	
W190-6	-97940.547	-2176.498	
W190-7	-97941.245	-2173.520	
W190-8	-97922.006	-2141.096	
W190-9	-97919.096	-2140.361	
W190-21	-97897.091	-2202.536	
W190-22	-97908.290	-2195.826	
W190-23	-97917.872	-2190.085	
W190-24	-97919.461	-2189.132	
W190-25	-97921.243	-2188.065	
W190-26	-97927.345	-2184.409	

測点名	X座標	Y座標
W190-27	-97927.704	-2184.193
W190-28	-97930.177	-2182.711
W190-29	-97932.641	-2159.020
W190-30	-97907.682	-2147.204
W190-31	-97898.723	-2152.575
W190-32	-97885.739	-2160.359
W190-33	-97875.462	-2166.521
W190-34	-97887.289	-2186.203
W190-35	-97897.547	-2180.055
W190-36	-97898.504	-2179.481
W190-37	-97908.069	-2173.748
W190-38	-97909.659	-2172.795
W190-39	-97910.532	-2172.272
W190-40	-97911.450	-2171.722
W190-41	-97917.552	-2168.064

面積（座標法）計算書

地 番： W190-1-1

測点名	[1] X(i)	[2] X(i+1)-X(i-1)	[3] Y(i)	[4] Y(i+1)-Y(i-1)	[2]*[3]	[1]*[4]	方向角	夾 角	距 離
W190-47	-97849.731	18.566	-2181.947	1.454	-40509.885186	-142250.127750	329-03-22	90-02-38	15.168
W190-1	-97836.722	13.700	-2189.746	-10.719	-29999.550097	1048735.320236	283-18-56	134-15-34	3.001
W190-2	-97836.031	-0.333	-2192.666	-4.612	731.035348	451260.358971	238-48-37	135-29-41	1.978
W190-C1	-97837.056	-2.024	-2194.359	-3.400	4441.432615	332606.277871	239-39-11	180-50-34	1.978
W190-3	-97838.055	-3.336	-2196.066	-5.767	7326.843657	564238.759779	240-04-31	180-25-20	4.684
W190-58	-97840.392	-17.233	-2200.126	4.866	37914.818076	-476080.943637	149-04-13	88-59-42	17.366
W190-55	-97855.288	-9.339	-2191.200	18.179	20463.945186	-1778878.285071	59-00-44	89-56-31	10.793
合計				倍面積	368.639600	-368.639600			54.968
				面 積	184.3198000	184.3198000			

面積（座標法）計算書

地番：W190-1-2

測点名	[1] X(i)	[2] X(i+1)-X(i-1)	[3] Y(i)	[4] Y(i+1)-Y(i-1)	[2]*[3]	[1]*[4]	方向角	夾角	距離
W190-66	-97861.096	18.361	-2175.133	4.836	-39938.561253	-473276.378211	329-03-22	90-02-38	13.251
W190-47	-97849.731	4.368	-2181.947	-18.463	-9531.669557	1806634.255540	239-00-44	89-57-22	13.589
W190-64	-97856.728	-18.361	-2193.597	-4.836	40277.574856	473255.251614	149-03-22	90-02-38	13.251
W190-65	-97868.093	-4.368	-2186.783	18.463	9552.796154	-1806973.269143	59-00-44	89-57-22	13.589
合計				倍面積	360.140199	-360.140199			53.680
				面積	180.0701000	180.0701000			

面積（座標法）計算書

地番：W190-1-3

測点名	[1] X(i)	[2] X(i+1)-X(i-1)	[3] Y(i)	[4] Y(i+1)-Y(i-1)	[2]*[3]	[1]*[4]	方向角	夾角	距離
W190-65	-97868.093	-18.363	-2186.783	-4.835	40155.846829	473219.552772	149-03-22	90-02-38	13.253
W190-63	-97879.459	-4.367	-2179.969	18.462	9519.659109	-1807092.459906	58-59-49	89-56-27	13.589
W190-61	-97872.460	18.363	-2168.321	4.835	-39816.821707	-473240.667851	329-03-22	90-03-33	13.249
W190-66	-97861.096	4.367	-2175.133	-18.462	-9498.544031	1806753.434785	239-00-44	89-57-22	13.589
合計				倍面積	360.140200	-360.140200			53.680
				面積	180.0701000	180.0701000			

面積（座標法）計算書

地 番： W190-1-4

測点名	[1] X(i)	[2] X(i+1)-X(i-1)	[3] Y(i)	[4] Y(i+1)-Y(i-1)	[2]*[3]	[1]*[4]	方向角	夾 角	距 離
W190-68	-97875.772	-19.045	-2196.168	-2.571	41825.262961	251663.308700	149-03-22	90-02-38	15.003
W190-67	-97888.640	-11.517	-2188.454	9.965	25204.057160	-975445.448229	59-01-50	89-58-28	2.625
W190-34	-97887.289	13.178	-2186.203	21.933	-28810.293777	-2146932.185380	58-59-49	179-57-59	22.963
W190-33	-97875.462	14.829	-2166.521	17.883	-32128.403315	-1750259.982094	329-03-22	90-03-33	3.500
W190-61	-97872.460	-3.998	-2168.321	-13.448	8668.385824	1316151.344947	238-59-49	89-56-27	13.589
W190-63	-97879.459	2.865	-2179.969	-17.562	-6244.673535	1718935.006986	329-03-22	270-03-33	11.501
W190-69	-97869.595	3.687	-2185.882	-16.199	-8059.210216	1585432.829968	239-00-44	89-57-22	11.998
合計				倍面積	455.125101	-455.125101			81.179
				面 積	227.5625507	227.5625507			

面積（座標法）計算書

地番：W190-1-5

測点名	[1] X(i)	[2] X(i+1)-X(i-1)	[3] Y(i)	[4] Y(i+1)-Y(i-1)	[2]*[3]	[1]*[4]	方向角	夾角	距離
W190-74	-97885.685	-19.861	-2209.371	-7.243	43879.944075	708942.596219	149-04-13	90-03-29	13.297
W190-21	-97897.091	-2.955	-2202.536	20.917	6508.339136	-2047755.386647	59-01-50	89-57-37	16.424
W190-67	-97888.640	19.861	-2188.454	7.243	-43464.506598	-708963.997460	329-03-22	90-01-32	13.303
W190-73	-97877.230	2.955	-2195.294	-20.917	-6486.937895	2047339.949171	239-00-44	89-57-22	16.421
合計				倍面積	436.838717	-436.838717			59.445
				面積	218.4193588	218.4193588			

面積（座標法）計算書

地番：W190-1-6

測点名	[1] X(i)	[2] X(i+1)-X(i-1)	[3] Y(i)	[4] Y(i+1)-Y(i-1)	[2]*[3]	[1]*[4]	方向角	夾角	距離
W190-75	-97865.821	2.957	-2202.134	-20.915	-6510.785746	2046828.244495	239-00-44	89-57-22	16.418
W190-76	-97874.274	-19.864	-2216.209	-7.237	44021.989806	708324.677019	149-04-13	90-03-29	13.303
W190-74	-97885.685	-2.957	-2209.371	20.915	6532.182775	-2047243.685537	59-00-44	89-56-31	16.421
W190-73	-97877.230	19.864	-2195.294	7.237	-43606.548764	-708346.074047	329-03-22	90-02-38	13.303
合計				倍面積	436.838070	-436.838070			59.445
				面積	218.4190351	218.4190351			

面積（座標法）計算書

地番：W190-1-7

測点名	[1] X(i)	[2] X(i+1)-X(i-1)	[3] Y(i)	[4] Y(i+1)-Y(i-1)	[2]*[3]	[1]*[4]	方向角	夾角	距離
W190-69	-97869.595	19.044	-2185.882	2.571	-41628.959193	-251658.640024	329-03-22	90-02-38	15.003
W190-64	-97856.728	-1.762	-2193.597	-32.074	3865.699172	3138620.067304	239-00-44	89-57-22	28.415
W190-50	-97871.357	-17.546	-2217.956	-22.612	38916.285060	2213049.358558	149-04-13	90-03-29	3.400
W190-76	-97874.274	5.536	-2216.209	15.822	-12269.349730	-1548569.947629	59-00-44	89-56-31	16.418
W190-75	-97865.821	-1.498	-2202.134	20.040	3299.790582	-1961275.239374	149-03-22	270-02-38	11.603
W190-68	-97875.772	-3.774	-2196.168	16.252	8288.171397	-1590637.236124	59-00-44	89-57-22	11.998
合計				倍面積	471.637289	-471.637289			86.837
				面積	235.8186446	235.8186446			

面積（座標法）計算書

地 番： W190-1-8

測点名	[1] X(i)	[2] X(i+1)-X(i-1)	[3] Y(i)	[4] Y(i+1)-Y(i-1)	[2]*[3]	[1]*[4]	方向角	夾 角	距 離
W190-60	-97850.675	11.012	-2217.991	-16.440	-24425.214145	1608634.171050	240-04-31	91-00-18	8.443
W190-4	-97854.887	-7.125	-2225.308	-8.088	15855.621457	791493.701659	194-49-28	134-44-57	3.014
W190-5	-97857.801	-16.470	-2226.079	7.352	36663.581449	-719463.034425	149-04-13	134-14-45	15.804
W190-50	-97871.357	-8.099	-2217.956	17.211	17963.410167	-1684436.632745	59-00-44	89-56-31	10.600
W190-57	-97865.900	20.682	-2208.869	-0.035	-45683.659484	3398.055016	329-04-13	90-03-29	17.748
合計				倍面積	373.739444	-373.739444			55.609
				面 積	186.8697223	186.8697223			

面積（座標法）計算書

地番：W190-1-9

測点名	[1] X(i)	[2] X(i+1)-X(i-1)	[3] Y(i)	[4] Y(i+1)-Y(i-1)	[2]*[3]	[1]*[4]	方向角	夾角	距離
W190-59	-97845.536	9.921	-2209.062	-17.953	-21915.972292	1756590.788254	240-04-31	91-00-18	10.302
W190-60	-97850.675	-20.364	-2217.991	0.194	45166.172201	-18946.753546	149-04-13	88-59-42	17.748
W190-57	-97865.900	-9.921	-2208.869	17.953	21914.051308	-1756956.368838	59-00-44	89-56-31	10.301
W190-56	-97860.596	20.364	-2200.038	-0.194	-44800.591617	18948.674530	329-04-13	90-03-29	17.557
合計				倍面積	363.659599	-363.659599			55.908
				面積	181.8298000	181.8298000			

面積（座標法）計算書

地番：W190-1-10

測点名	[1] X(i)	[2] X(i+1)-X(i-1)	[3] Y(i)	[4] Y(i+1)-Y(i-1)	[2]*[3]	[1]*[4]	方向角	夾角	距離
W190-58	-97840.392	9.752	-2200.126	-17.862	-21456.267601	1747653.463099	240-04-31	91-00-18	10.311
W190-59	-97845.536	-20.204	-2209.062	0.087	44632.261064	-8559.108044	149-04-13	88-59-42	17.557
W190-56	-97860.596	-9.752	-2200.038	17.862	21455.414513	-1748014.355787	59-00-44	89-56-31	10.310
W190-55	-97855.288	20.204	-2191.200	-0.087	-44271.368375	8559.961133	329-04-13	90-03-29	17.366
合計				倍面積	360.039599	-360.039599			55.544
				面積	180.0198000	180.0198000			

面積（座標法）計算書

地番：W190-2

測点名	[1] X(i)	[2] X(i+1)-X(i-1)	[3] Y(i)	[4] Y(i+1)-Y(i-1)	[2]*[3]	[1]*[4]	方向角	夾角	距離
W190-32	-97885.739	22.085	-2160.359	13.534	-47712.222713	-1324777.054494	329-03-22	90-00-00	11.983
W190-33	-97875.462	-1.550	-2166.521	-25.844	3358.700162	2529470.172434	238-59-49	89-56-27	22.963
W190-34	-97887.289	-22.085	-2186.203	-13.534	48282.990380	1324798.035760	149-03-44	90-03-55	11.959
W190-35	-97897.547	1.550	-2180.055	25.844	-3379.681428	-2530040.940101	59-03-22	89-59-38	22.964
合計				倍面積	549.786400	-549.786400			69.869
				面積	274.8932003	274.8932003			

面積（座標法）計算書

地番：W190-3

測点名	[1] X(i)	[2] X(i+1)-X(i-1)	[3] Y(i)	[4] Y(i+1)-Y(i-1)	[2]*[3]	[1]*[4]	方向角	夾角	距離
W190-35	-97897.547	-24.793	-2180.055	-11.912	54050.324044	1166190.918984	149-03-44	90-00-22	15.139
W190-39	-97910.532	-1.176	-2172.272	27.480	2555.435410	-2690573.537317	59-03-22	89-59-38	22.965
W190-31	-97898.723	24.793	-2152.575	11.912	-53369.011608	-1166204.932547	329-03-22	90-00-00	15.139
W190-32	-97885.739	1.176	-2160.359	-27.480	-2541.421846	2689892.224881	239-03-22	90-00-00	22.964
合計				倍面積	695.325999	-695.325999			76.207
				面積	347.6629997	347.6629997			

面積（座標法）計算書

地番：W190-4

測点名	[1] X(i)	[2] X(i+1)-X(i-1)	[3] Y(i)	[4] Y(i+1)-Y(i-1)	[2]*[3]	[1]*[4]	方向角	夾角	距離
W190-39	-97910.532	-20.769	-2172.272	-14.326	45114.992647	1402709.166117	149-03-44	90-00-22	10.446
W190-43	-97919.492	2.850	-2166.901	25.068	-6174.599839	-2454658.178012	59-03-22	89-59-38	22.967
W190-30	-97907.682	20.769	-2147.204	14.326	-44594.363368	-1402668.342839	329-03-22	90-00-00	10.446
W190-31	-97898.723	-2.850	-2152.575	-25.068	6133.776561	2454137.548733	239-03-22	90-00-00	22.965
合計				倍面積	479.806000	-479.806000			66.824
				面積	239.9030005	239.9030005			

面積（座標法）計算書

地 番： W190-5

測点名	[1] X(i)	[2] X(i+1)-X(i-1)	[3] Y(i)	[4] Y(i+1)-Y(i-1)	[2]*[3]	[1]*[4]	方向角	夾 角	距 離
W190-43	-97919.492	-24.958	-2166.901	-11.816	54082.537020	1157050.830321	149-03-44	90-00-22	15.330
W190-29	-97932.641	-2.514	-2159.020	25.805	5427.841240	-2527154.962957	59-19-01	90-15-17	20.841
W190-8	-97922.006	13.545	-2141.096	18.659	-29000.655874	-1827142.540867	14-11-12	134-52-11	3.001
W190-9	-97919.096	14.323	-2140.361	-6.107	-30657.139781	598019.729407	329-03-22	134-52-10	13.308
W190-30	-97907.682	-0.396	-2147.204	-26.541	849.483394	2598524.878095	239-03-22	90-00-00	22.967
合計				倍面積	702.066000	-702.066000			75.447
				面 積	351.0330001	351.0330001			

面積（座標法）計算書

地 番： W190-6

測点名	[1] X(i)	[2] X(i+1)-X(i-1)	[3] Y(i)	[4] Y(i+1)-Y(i-1)	[2]*[3]	[1]*[4]	方向角	夾 角	距 離
W190-29	-97932.641	20.869	-2159.020	7.148	-45056.004433	-700058.390241	329-03-44	89-44-43	14.300
W190-44	-97920.376	2.464	-2166.372	-23.691	-5336.927278	2319865.661055	239-02-32	89-58-48	19.054
W190-28	-97930.177	-20.171	-2182.711	-10.127	44027.048891	991702.995716	149-04-13	90-01-41	12.088
W190-6	-97940.547	-11.067	-2176.498	9.191	24087.625684	-900216.244665	103-11-19	134-07-06	3.059
W190-7	-97941.245	7.906	-2173.520	17.478	-17183.178328	-1711832.586398	59-19-01	136-07-42	16.860
合計				倍面積	538.564534	-538.564534			65.361
				面 積	269.2822673	269.2822673			

面積（座標法）計算書

地 番： W190-7-1

測点名	[1] X(i)	[2] X(i+1)-X(i-1)	[3] Y(i)	[4] Y(i+1)-Y(i-1)	[2]*[3]	[1]*[4]	方向角	夾 角	距 離
W190-27	-97927.704	-12.267	-2184.193	-14.862	26793.144699	1455419.741331	149-04-13	90-00-00	2.883
W190-28	-97930.177	7.328	-2182.711	17.822	-15995.226457	-1745301.211965	59-02-32	89-58-19	19.054
W190-44	-97920.376	12.267	-2166.372	14.862	-26574.526441	-1455310.829073	329-03-44	90-01-12	2.874
W190-42	-97917.911	-7.328	-2167.849	-17.822	15886.314200	1745082.593707	239-04-13	90-00-29	19.054
合計				倍面積	109.706000	-109.706000			43.865
				面 積	54.8530001	54.8530001			

面積（座標法）計算書

地番：W190-7-2

測点名	[1] X(i)	[2] X(i+1)-X(i-1)	[3] Y(i)	[4] Y(i+1)-Y(i-1)	[2]*[3]	[1]*[4]	方向角	夾角	距離
W190-25	-97921.243	-15.895	-2188.065	-12.687	34779.655345	1242315.320375	149-04-13	90-00-00	7.114
W190-26	-97927.345	3.691	-2184.409	20.001	-8062.792278	-1958613.413002	59-04-13	90-00-00	19.054
W190-41	-97917.552	15.895	-2168.064	12.687	-34461.741245	-1242268.492276	329-03-44	89-59-31	7.114
W190-40	-97911.450	-3.691	-2171.722	-20.001	8015.964179	1958295.498902	239-04-13	90-00-29	19.053
合計				倍面積	271.086001	-271.086001			52.335
				面積	135.5430007	135.5430007			

面積（座標法）計算書

地番：W190-7-3

測点名	[1] X(i)	[2] X(i+1)-X(i-1)	[3] Y(i)	[4] Y(i+1)-Y(i-1)	[2]*[3]	[1]*[4]	方向角	夾角	距離
W190-26	-97927.345	-10.152	-2184.409	-16.129	22176.801508	1579482.829701	149-04-13	90-00-00	0.418
W190-27	-97927.704	9.434	-2184.193	16.559	-20606.677637	-1621617.616837	59-04-13	90-00-00	19.054
W190-42	-97917.911	10.152	-2167.849	16.129	-22008.685945	-1579330.660136	329-03-44	89-59-31	0.418
W190-41	-97917.552	-9.434	-2168.064	-16.559	20454.508073	1621449.501274	239-04-13	90-00-29	19.054
合計				倍面積	15.945998	-15.945998			38.944
				面積	7.9729993	7.9729993			

面積（座標法）計算書

地番：W190-8-1

測点名	[1] X(i)	[2] X(i+1)-X(i-1)	[3] Y(i)	[4] Y(i+1)-Y(i-1)	[2]*[3]	[1]*[4]	方向角	夾角	距離
W190-40	-97911.450	11.584	-2171.722	15.270	-25156.722163	-1495099.096057	329-03-44	89-59-31	2.088
W190-38	-97909.659	-8.012	-2172.795	-17.411	17407.542459	1704674.064212	239-02-09	89-58-25	19.052
W190-24	-97919.461	-11.584	-2189.132	-15.270	25358.403495	1495221.432312	149-04-13	90-02-04	2.077
W190-25	-97921.243	8.012	-2188.065	17.411	-17529.878714	-1704875.745544	59-04-13	90-00-00	19.053
合計				倍面積	79.345077	-79.345077			42.270
				面積	39.6725385	39.6725385			

面積（座標法）計算書

地番：W190-8-2

測点名	[1] X(i)	[2] X(i+1)-X(i-1)	[3] Y(i)	[4] Y(i+1)-Y(i-1)	[2]*[3]	[1]*[4]	方向角	夾角	距離
W190-23	-97917.872	-11.392	-2190.085	-15.384	24950.100902	1506401.592686	149-04-13	90-02-04	1.854
W190-24	-97919.461	8.213	-2189.132	17.290	-17978.396062	-1693019.527820	59-02-09	89-57-56	19.052
W190-38	-97909.659	11.392	-2172.795	15.384	-24753.129001	-1506275.247784	329-03-44	90-01-35	1.854
W190-37	-97908.069	-8.213	-2173.748	-17.290	17852.051161	1692822.555919	239-02-09	89-58-25	19.052
合計				倍面積	70.626999	-70.626999			41.812
				面積	35.3134996	35.3134996			

面積（座標法）計算書

地番：W190-9-1

測点名	[1] X(i)	[2] X(i+1)-X(i-1)	[3] Y(i)	[4] Y(i+1)-Y(i-1)	[2]*[3]	[1]*[4]	方向角	夾角	距離
W190-37	-97908.069	19.368	-2173.748	10.604	-42100.656109	-1038183.543784	329-03-44	90-01-35	11.152
W190-36	-97898.504	-0.221	-2179.481	-22.078	481.024185	2161432.692153	239-05-24	90-01-40	19.051
W190-22	-97908.290	-19.368	-2195.826	-10.604	42528.263619	1038185.884072	149-04-13	89-58-49	11.170
W190-23	-97917.872	0.221	-2190.085	22.078	-483.364473	-2161860.299662	59-02-09	89-57-56	19.052
合計				倍面積	425.267220	-425.267220			60.425
				面積	212.6336104	212.6336104			

面積（座標法）計算書

地番：W190-9-2

測点名	[1] X(i)	[2] X(i+1)-X(i-1)	[3] Y(i)	[4] Y(i+1)-Y(i-1)	[2]*[3]	[1]*[4]	方向角	夾角	距離
W190-34	-97887.289	1.412	-2186.203	-23.055	-3087.946292	2256799.018340	239-01-50	89-58-06	19.049
W190-21	-97897.091	-21.001	-2202.536	-9.623	46254.822683	942071.707655	149-04-13	90-02-23	13.055
W190-22	-97908.290	-1.412	-2195.826	23.055	3101.538606	-2257283.191259	59-05-24	90-01-11	19.051
W190-36	-97898.504	21.001	-2179.481	9.623	-45770.649765	-942085.299969	329-03-44	89-58-20	13.075
合計				倍面積	497.765231	-497.765231			64.230
				面積	248.8826159	248.8826159			