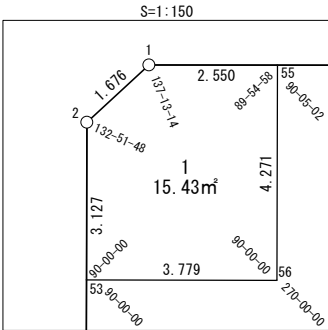
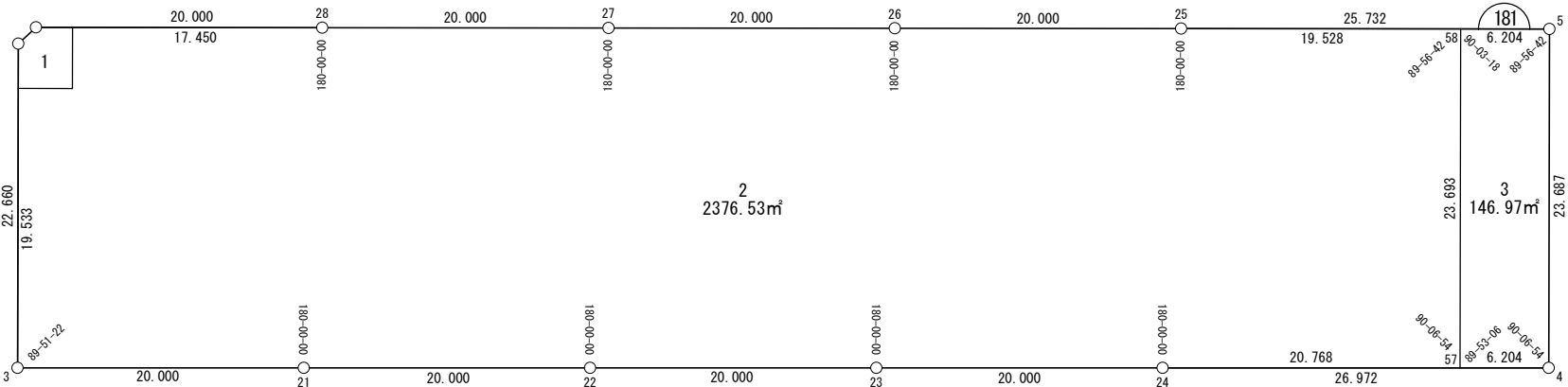


面積一覧表

地番名	地積
W181-1	15.43 m ²
W181-2	2376.53 m ²
W181-3	146.97 m ²
合計	2538.93 m ²



世界測地系



座 標 一 覧 表

測 点 名	X 座 標	Y 座 標
W181-1	-97513.797	-2503.135
W181-2	-97514.539	-2504.638
W181-3	-97536.258	-2511.100
W181-4	-97566.507	-2408.494
W181-5	-97543.801	-2401.750
W181-21	-97541.913	-2491.917
W181-22	-97547.569	-2472.733
W181-23	-97553.224	-2453.549
W181-24	-97558.880	-2434.365
W181-25	-97536.499	-2426.424
W181-26	-97530.823	-2445.602
W181-27	-97525.148	-2464.780
W181-28	-97519.472	-2483.958
W181-53	-97517.536	-2505.530
W181-55	-97514.520	-2500.690
W181-56	-97518.614	-2501.908
W181-57	-97564.753	-2414.445
W181-58	-97542.040	-2407.699

面積（座標法）計算書

地 番： W181-1

測点名	[1] X(i)	[2] X(i+1)-X(i-1)	[3] Y(i)	[4] Y(i+1)-Y(i-1)	[2]*[3]	[1]*[4]	方向角	夾 角	距 離
W181-55	-97514.520	4.817	-2500.690	-1.227	-12046.826639	119697.870265	286-29-09	89-54-58	2.550
W181-1	-97513.797	-0.019	-2503.135	-3.948	46.882675	385003.223434	243-42-23	137-13-14	1.676
W181-2	-97514.539	-3.740	-2504.638	-2.394	9366.657149	233496.737114	196-34-11	132-51-48	3.127
W181-53	-97517.536	-4.075	-2505.530	2.730	10209.878937	-266239.178842	106-34-11	90-00-00	3.779
W181-56	-97518.614	3.016	-2501.908	4.840	-7545.732044	-471989.512051	16-34-11	90-00-00	4.271
合計				倍面積	30.860078	-30.860078			15.403
				面 積	15.4300394	15.4300394			

面積（座標法）計算書

地 番： W181-2

測点名	[1] X(i)	[2] X(i+1)-X(i-1)	[3] Y(i)	[4] Y(i+1)-Y(i-1)	[2]*[3]	[1]*[4]	方向角	夾 角	距 離
W181-55	-97514.520	0.858	-2500.690	-17.950	-2145.956412	1750416.486047	196-34-11	90-05-02	4.271
W181-56	-97518.614	-3.016	-2501.908	-4.840	7545.732044	471989.512051	286-34-11	270-00-00	3.779
W181-53	-97517.536	-17.644	-2505.530	-9.192	44207.568776	896419.699783	196-34-11	90-00-00	19.533
W181-3	-97536.258	-24.377	-2511.100	13.613	61213.584245	-1327789.721386	106-25-33	89-51-22	20.000
W181-21	-97541.913	-11.311	-2491.917	38.367	28186.166533	-3742433.432850	106-25-33	180-00-00	20.000
W181-22	-97547.569	-11.311	-2472.733	38.367	27969.178702	-3742650.420655	106-25-33	180-00-00	20.000
W181-23	-97553.224	-11.311	-2453.549	38.367	27752.190897	-3742867.409436	106-25-33	180-00-00	20.000
W181-24	-97558.880	-11.528	-2434.365	39.104	28064.104295	-3814982.242334	106-25-33	180-00-00	20.768
W181-57	-97564.753	16.840	-2414.445	26.666	-40658.757331	-2601670.045994	16-32-27	90-06-54	23.693
W181-58	-97542.040	28.254	-2407.699	-11.979	-68027.319819	1168499.361509	286-29-09	89-56-42	19.528
W181-25	-97536.499	11.217	-2426.424	-37.903	-27217.303186	3696891.261156	286-29-09	180-00-00	20.000
W181-26	-97530.823	11.351	-2445.602	-38.356	-27760.258157	3740854.021521	286-29-09	180-00-00	20.000
W181-27	-97525.148	11.351	-2464.780	-38.356	-27977.947212	3740636.332466	286-29-09	180-00-00	20.000
W181-28	-97519.472	10.627	-2483.958	-35.910	-26397.912484	3501933.527230	286-29-09	180-00-00	17.450
合計				倍面積	4753.070890	-4753.070890			249.022
				面 積	2376.5354453	2376.5354453			

面積（座標法）計算書

地番：W181-3

測点名	[1] X(i)	[2] X(i+1)-X(i-1)	[3] Y(i)	[4] Y(i+1)-Y(i-1)	[2]*[3]	[1]*[4]	方向角	夾角	距離
W181-4	-97566.507	20.952	-2408.494	12.694	-50462.846454	-1238540.983266	16-32-27	90-06-54	23.687
W181-5	-97543.801	24.467	-2401.750	0.795	-58763.429013	-77510.731951	286-29-09	89-56-42	6.204
W181-58	-97542.040	-20.952	-2407.699	-12.694	50446.197446	1238230.392258	196-32-27	90-03-18	23.693
W181-57	-97564.753	-24.467	-2414.445	-0.795	59074.020020	77527.380958	106-25-33	89-53-06	6.204
合計				倍面積	293.942000	-293.942000			59.788
				面積	146.9710001	146.9710001			