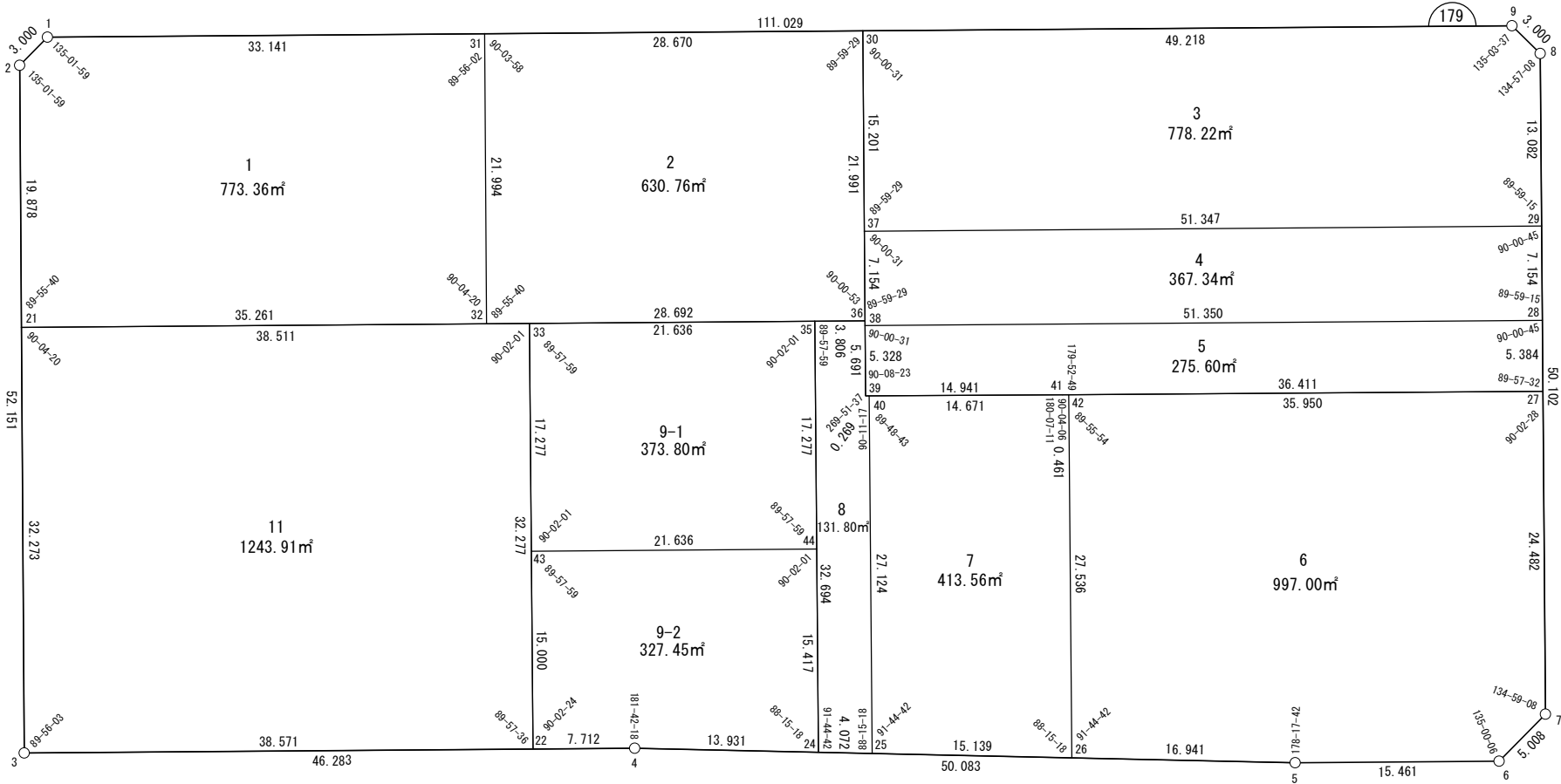


面積一覧表

地番名	地積
W179-1	773.36㎡
W179-2	630.76㎡
W179-3	778.22㎡
W179-4	367.34㎡
W179-5	275.60㎡
W179-6	997.00㎡
W179-7	413.56㎡
W179-8	131.80㎡
W179-9-1	373.80㎡
W179-9-2	327.45㎡
W179-11	1243.91㎡
合計	6312.80㎡

座 標 一 覧 表

測 点 名	X 座 標	Y 座 標
W179-1	-97505.957	-2630.653
W179-2	-97507.384	-2633.291
W179-3	-97557.356	-2648.208
W179-4	-97570.544	-2603.844
W179-5	-97586.237	-2556.283
W179-6	-97590.642	-2541.463
W179-7	-97588.257	-2537.059
W179-8	-97540.229	-2522.795
W179-9	-97537.593	-2524.226
W179-21	-97526.432	-2638.977
W179-22	-97568.347	-2611.236
W179-24	-97574.909	-2590.615
W179-25	-97576.185	-2586.748
W179-26	-97580.928	-2572.371
W179-27	-97564.789	-2530.089
W179-28	-97559.627	-2528.556
W179-29	-97552.769	-2526.519
W179-30	-97523.569	-2571.404
W179-31	-97515.400	-2598.885
W179-32	-97536.475	-2605.177
W179-33	-97537.401	-2602.061
W179-35	-97543.564	-2581.321
W179-36	-97544.647	-2577.673
W179-37	-97538.139	-2575.738
W179-38	-97544.996	-2577.777
W179-39	-97550.102	-2579.296
W179-40	-97550.180	-2579.038
W179-41	-97554.397	-2564.985
W179-42	-97554.528	-2564.544
W179-43	-97553.965	-2606.972
W179-44	-97560.128	-2586.233



世界測地系

# 面積（座標法）計算書

地 番： W179-1

測点名	[1] X(i)	[2] X(i+1)-X(i-1)	[3] Y(i)	[4] Y(i+1)-Y(i-1)	[2]*[3]	[1]*[4]	方向角	夾 角	距 離
W179-31	-97515.400	30.518	-2598.885	-25.476	-79313.561270	2484309.301056	286-33-17	89-56-02	33.141
W179-1	-97505.957	8.016	-2630.653	-34.406	-21086.198649	3354770.971781	241-35-16	135-01-59	3.000
W179-2	-97507.384	-20.475	-2633.291	-8.324	53916.503886	811692.674006	196-37-15	135-01-59	19.878
W179-21	-97526.432	-29.091	-2638.977	28.115	76770.303027	-2741915.989464	106-32-55	89-55-40	35.261
W179-32	-97536.475	11.032	-2605.177	40.092	-28740.322595	-3910403.681777	16-37-15	90-04-20	21.994
合計				倍面積	1546.724397	-1546.724397			113.274
				面 積	773.3621986	773.3621986			

面積（座標法）計算書

地番：W179-2

測点名	[1] X(i)	[2] X(i+1)-X(i-1)	[3] Y(i)	[4] Y(i+1)-Y(i-1)	[2]*[3]	[1]*[4]	方向角	夾角	距離
W179-32	-97536.475	-29.248	-2605.177	21.212	76195.048880	-2068944.308785	106-32-55	89-55-40	28.692
W179-36	-97544.647	12.906	-2577.673	33.772	-33268.664288	-3294316.521209	16-33-48	90-00-53	21.991
W179-30	-97523.569	29.248	-2571.404	-21.212	-75207.288833	2068670.536669	286-33-17	89-59-29	28.670
W179-31	-97515.400	-12.906	-2598.885	-33.772	33542.436405	3293328.761161	196-37-15	90-03-58	21.994
合計				倍面積	1261.532163	-1261.532163			101.347
				面積	630.7660817	630.7660817			

# 面積（座標法）計算書

地 番： W179-3

測点名	[1] X(i)	[2] X(i+1)-X(i-1)	[3] Y(i)	[4] Y(i+1)-Y(i-1)	[2]*[3]	[1]*[4]	方向角	夾 角	距 離
W179-29	-97552.769	-2.090	-2526.519	52.943	5280.538976	-5164749.186381	16-32-32	89-59-15	13.082
W179-8	-97540.229	15.177	-2522.795	2.293	-38287.293267	-223656.935669	331-29-40	134-57-08	3.000
W179-9	-97537.593	16.660	-2524.226	-48.610	-42053.770252	4741277.478637	286-33-17	135-03-37	49.218
W179-30	-97523.569	-0.546	-2571.404	-51.511	1404.401746	5023581.180189	196-33-48	90-00-31	15.201
W179-37	-97538.139	-29.200	-2575.738	44.885	75212.565001	-4378008.978981	106-33-17	89-59-29	51.347
合計				倍面積	1556.442205	-1556.442205			131.848
				面 積	778.2211025	778.2211025			

## 面 積 ( 座 標 法 ) 計 算 書

地 番 : W179-4

測点名	[1] X(i)	[2] X(i+1)-X(i-1)	[3] Y(i)	[4] Y(i+1)-Y(i-1)	[2]*[3]	[1]*[4]	方向角	夾 角	距 離
W179-28	-97559.627	-7.773	-2528.556	51.258	19655.269748	-5000701.674945	16-32-32	89-59-15	7.154
W179-29	-97552.769	21.488	-2526.519	-47.182	-54290.345337	4602697.960277	286-33-17	90-00-45	51.347
W179-37	-97538.139	7.773	-2575.738	-51.258	-20022.027501	4999600.234995	196-33-48	90-00-31	7.154
W179-38	-97544.996	-21.488	-2577.777	47.182	55391.785287	-4602331.202524	106-33-17	89-59-29	51.350
合計				倍面積	734.682196	-734.682196			117.005
				面 積	367.3410985	367.3410985			

# 面積（座標法）計算書

地番：W179-5

測点名	[1] X(i)	[2] X(i+1)-X(i-1)	[3] Y(i)	[4] Y(i+1)-Y(i-1)	[2]*[3]	[1]*[4]	方向角	夾角	距離
W179-38	-97544.996	9.525	-2577.777	-50.740	-24552.365703	4949414.138912	196-33-48	90-00-31	5.328
W179-39	-97550.102	-9.401	-2579.296	12.792	24247.038963	-1247825.040840	106-42-11	90-08-23	14.941
W179-41	-97554.397	-14.686	-2564.985	49.207	37669.839398	-4800335.348332	106-35-00	179-52-49	36.411
W179-27	-97564.789	-5.230	-2530.089	36.429	13233.616697	-3554227.177753	16-32-32	89-57-32	5.384
W179-28	-97559.627	19.793	-2528.556	-47.688	-50046.927164	4652422.225822	286-33-17	90-00-45	51.350
合計				倍面積	551.202192	-551.202192			113.414
				面積	275.6010961	275.6010961			

# 面積（座標法）計算書

地 番： W179-6

測点名	[1] X(i)	[2] X(i+1)-X(i-1)	[3] Y(i)	[4] Y(i+1)-Y(i-1)	[2]*[3]	[1]*[4]	方向角	夾 角	距 離
W179-26	-97580.928	-31.708	-2572.371	8.260	81566.009352	-806065.376238	108-15-36	91-44-42	16.941
W179-5	-97586.237	-9.714	-2556.283	30.908	24830.776077	-3016230.844639	106-33-18	178-17-42	15.461
W179-6	-97590.642	-2.020	-2541.463	19.224	5134.462460	-1876045.614200	61-33-24	135-00-06	5.008
W179-7	-97588.257	25.853	-2537.059	11.374	-65591.858278	-1109945.715255	16-32-32	134-59-08	24.482
W179-27	-97564.789	33.729	-2530.089	-27.484	-85336.791215	2681480.669497	286-35-00	90-02-28	35.950
W179-42	-97554.528	-16.140	-2564.544	-42.282	41391.403142	4124812.879297	196-30-54	89-55-54	27.536
合計				倍面積	1994.001539	-1994.001539			125.378
				面 積	997.0007695	997.0007695			

# 面積（座標法）計算書

地 番： W179-7

測点名	[1] X(i)	[2] X(i+1)-X(i-1)	[3] Y(i)	[4] Y(i+1)-Y(i-1)	[2]*[3]	[1]*[4]	方向角	夾 角	距 離
W179-42	-97554.528	26.532	-2564.544	7.386	-68042.262493	-720515.463273	286-35-00	90-04-06	0.461
W179-41	-97554.397	4.348	-2564.985	-14.494	-11153.246082	1413968.885847	286-42-11	180-07-11	14.671
W179-40	-97550.180	-21.788	-2579.038	-21.763	56192.968926	2122957.620839	196-30-54	89-48-43	27.124
W179-25	-97576.185	-30.749	-2586.748	6.667	79538.897225	-650494.924877	108-15-36	91-44-42	15.139
W179-26	-97580.928	21.657	-2572.371	22.205	-55709.236372	-2166743.239739	16-30-54	88-15-18	27.536
合計				倍面積	827.121203	-827.121203			84.931
				面 積	413.5606017	413.5606017			



## 面 積 ( 座 標 法 ) 計 算 書

地 番 : W179-8

測点名	[1] X(i)	[2] X(i+1)-X(i-1)	[3] Y(i)	[4] Y(i+1)-Y(i-1)	[2]*[3]	[1]*[4]	方向角	夾 角	距 離
W179-40	-97550.180	26.082	-2579.038	7.452	-67267.699681	-726975.439237	286-42-11	90-11-17	0.269
W179-39	-97550.102	5.532	-2579.296	1.364	-14269.610061	-133087.253535	16-33-48	269-51-37	5.691
W179-36	-97544.647	6.539	-2577.673	-2.026	-16855.042338	197582.711748	286-32-55	89-59-07	3.806
W179-35	-97543.564	-30.261	-2581.321	-12.942	78114.625846	1262387.720301	196-30-54	89-57-59	32.694
W179-24	-97574.909	-32.621	-2590.615	-5.427	84509.336101	529515.720372	108-15-36	91-44-42	4.072
W179-25	-97576.185	24.729	-2586.748	11.577	-63968.008667	-1129687.060846	16-30-54	88-15-18	27.124
合計				倍面積	263.601198	-263.601198			73.656
				面 積	131.8005991	131.8005991			

面積（座標法）計算書

地番：W179-9-1

測点名	[1] X(i)	[2] X(i+1)-X(i-1)	[3] Y(i)	[4] Y(i+1)-Y(i-1)	[2]*[3]	[1]*[4]	方向角	夾角	距離
W179-33	-97537.401	-10.402	-2602.061	-25.651	27066.412643	2501936.168866	196-30-54	89-57-59	17.277
W179-43	-97553.965	-22.727	-2606.972	15.828	59248.567786	-1544125.741765	106-32-55	90-02-01	21.636
W179-44	-97560.128	10.402	-2586.233	25.651	-26901.766735	-2502519.139213	16-30-54	89-57-59	17.277
W179-35	-97543.564	22.727	-2581.321	-15.828	-58665.597439	1543961.095857	286-32-55	90-02-01	21.636
合計				倍面積	747.616254	-747.616254			77.826
				面積	373.8081273	373.8081273			

# 面積（座標法）計算書

地番：W179-9-2

測点名	[1] X(i)	[2] X(i+1)-X(i-1)	[3] Y(i)	[4] Y(i+1)-Y(i-1)	[2]*[3]	[1]*[4]	方向角	夾角	距離
W179-43	-97553.965	-8.219	-2606.972	-25.004	21426.067648	2439214.377537	196-30-54	89-57-59	15.000
W179-22	-97568.347	-16.579	-2611.236	3.128	43290.703641	-305191.626135	106-33-18	90-02-24	7.712
W179-4	-97570.544	-6.562	-2603.844	20.621	17087.035804	-2012023.928304	108-15-36	181-42-18	13.931
W179-24	-97574.909	10.416	-2590.615	17.612	-26984.099849	-1718465.614392	16-30-54	88-15-18	15.417
W179-44	-97560.128	20.944	-2586.233	-16.357	-54164.801105	1595811.885155	286-32-55	90-02-01	21.636
合計				倍面積	654.906139	-654.906139			73.696
				面積	327.4530697	327.4530697			

# 面積（座標法）計算書

地番：W179-11

測点名	[1] X(i)	[2] X(i+1)-X(i-1)	[3] Y(i)	[4] Y(i+1)-Y(i-1)	[2]*[3]	[1]*[4]	方向角	夾角	距離
W179-21	-97526.432	-19.955	-2638.977	-46.147	52661.904908	4500582.439110	196-37-15	90-04-20	32.273
W179-3	-97557.356	-41.915	-2648.208	27.741	110999.138585	-2706309.875057	106-33-18	89-56-03	38.571
W179-22	-97568.347	19.955	-2611.236	46.147	-52108.327402	-4502516.694566	16-30-54	89-57-36	32.277
W179-33	-97537.401	41.915	-2602.061	-27.741	-109064.883129	2705756.297551	286-32-55	90-02-01	38.511
合計				倍面積	2487.832961	-2487.832961			141.632
				面積	1243.9164808	1243.9164808			