

座 標 一 覧 表

面積一覧表	
地番名	地積
W175-1	3452.25 m ²
W175-4	293.38 m ²
W175-5	325.25 m ²
W175-6	1186.50 m ²
W175-7	354.88 m ²
W175-8	367.35 m ²
W175-9-1	211.10 m ²
W175-9-2	211.10 m ²
W175-9-3	211.10 m ²
W175-9-4	233.00 m ²
W175-9-5	254.71 m ²
W175-11	565.08 m ²

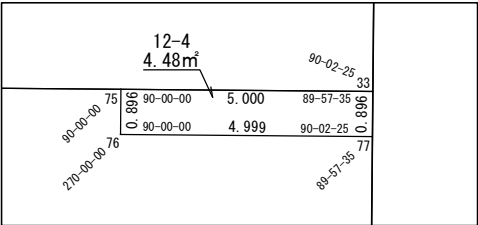
地番名	地積
W175-12-1	704.15 m ²
W175-12-2	704.15 m ²
W175-12-3	704.15 m ²
W175-12-4	4.48 m ²
W175-13	633.87 m ²
W175-14	633.87 m ²
W175-15	216.63 m ²
W175-16	236.21 m ²
W175-17	212.53 m ²
合計	11715.74 m ²

測 点 名	X 座 標	Y 座 標
W175-1	-97410.189	-2965.207
W175-2	-97411.545	-2967.883
W175-3	-97443.387	-2979.334
W175-4	-97469.274	-2980.356
W175-5	-97471.398	-2978.237
W175-6	-97479.959	-2913.879
W175-7	-97489.246	-2882.604
W175-8	-97502.056	-2834.250
W175-9	-97519.013	-2777.207
W175-10	-97513.293	-2766.659
W175-11	-97475.919	-2755.568
W175-12	-97471.528	-2757.966
W175-24	-97475.614	-2931.146
W175-25	-97478.248	-2920.083
W175-26	-97479.728	-2914.681
W175-27	-97481.490	-2908.721
W175-28	-97488.384	-2885.506
W175-29	-97491.259	-2875.003
W175-30	-97493.844	-2865.244
W175-31	-97499.762	-2842.907

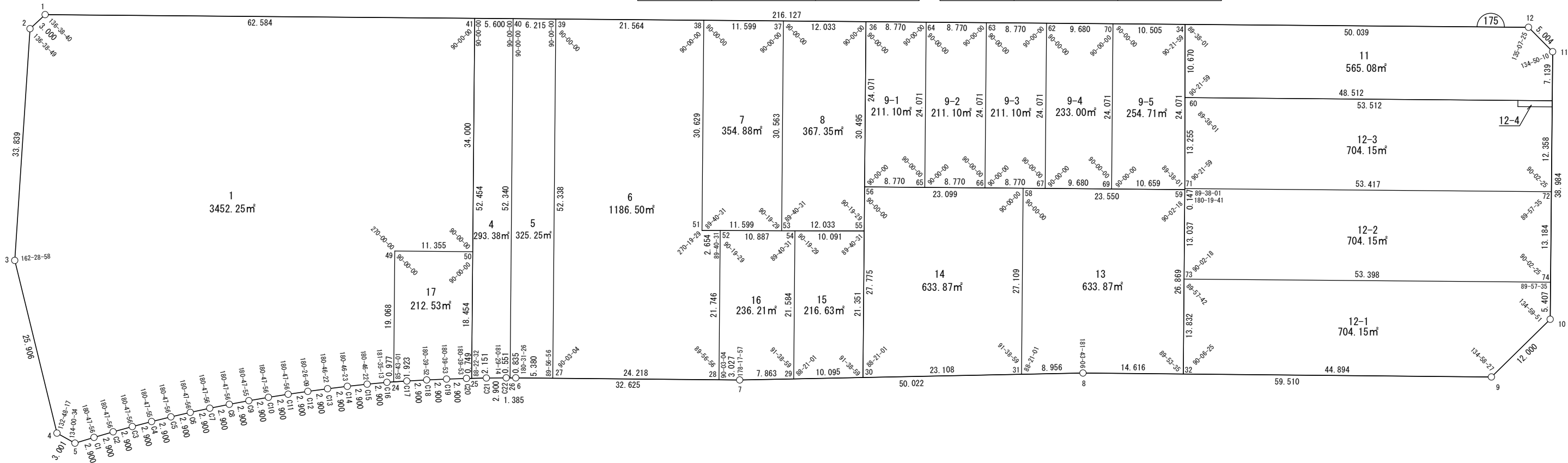
測 点 名	X 座 標	Y 座 標
W175-32	-97506.220	-2820.240
W175-33	-97482.763	-2757.599
W175-34	-97457.326	-2805.948
W175-36	-97444.131	-2850.530
W175-37	-97440.716	-2862.068
W175-38	-97437.424	-2873.190
W175-39	-97431.304	-2893.867
W175-40	-97429.540	-2899.827
W175-41	-97427.951	-2905.197
W175-49	-97457.330	-2925.734
W175-50	-97460.552	-2914.846
W175-51	-97466.793	-2881.883
W175-52	-97467.532	-2879.334
W175-53	-97470.022	-2870.742
W175-54	-97470.563	-2868.878
W175-55	-97473.372	-2859.185
W175-56	-97467.212	-2857.362
W175-58	-97473.767	-2835.213
W175-59	-97480.451	-2812.632
W175-60	-97467.576	-2808.910



世界測地系



拡大図 1/150



測 点 名	X 座 標	Y 座 標
W175-62	-97451.598	-2825.302
W175-63	-97449.109	-2833.712
W175-64	-97446.620	-2842.121
W175-65	-97469.701	-2848.952
W175-66	-97472.190	-2840.543
W175-67	-97474.679	-2832.134
W175-69	-97477.426	-2822.852
W175-70	-97454.345	-2816.020
W175-71	-97480.310	-2812.591
W175-72	-97495.470	-2761.370
W175-73	-97492.955	-2816.323
W175-74	-97508.110	-2765.120
W175-75	-97481.344	-2762.394

測 点 名	X 座 標	Y 座 標
W175-76	-97482.204	-2762.648
W175-77	-97483.622	-2757.854
W175-78	-97471.351	-2975.337
W175-79	-97471.345	-2972.437
W175-80	-97471.379	-2969.537
W175-81	-97471.453	-2966.638
W175-82	-97471.568	-2963.741
W175-83	-97471.724	-2960.845
W175-84	-97471.919	-2957.952
W175-85	-97472.155	-2955.061
W175-86	-97472.431	-2952.174
W175-87	-97472.748	-2949.292
W175-88	-97473.105	-2946.414

測 点 名	X 座 標	Y 座 標
W175-C12	-97473.501	-2943.541
W175-C13	-97473.920	-2940.671
W175-C14	-97474.377	-2937.808
W175-C15	-97474.873	-2934.950
W175-C16	-97475.407	-2932.100
W175-C17	-97476.020	-2929.266
W175-C18	-97476.666	-2926.439
W175-C19	-97477.345	-2923.619
W175-C20	-97478.056	-2920.808
W175-C21	-97478.800	-2918.005
W175-C22	-97479.576	-2915.211

面積（座標法）計算書

地番：W175-1

測点名	[1] X(i)	[2] X(i+1)-X(i-1)	[3] Y(i)	[4] Y(i+1)-Y(i-1)	[2]*[3]	[1]*[4]	方向角	夾角	距離
W175-4	-97469.274	-28.011	-2980.356	1.097	83481.512455	-106921.785177	135-03-59	132-48-17	3.001
W175-5	-97471.398	-2.078	-2978.237	5.019	6187.303538	-489204.286383	89-04-33	134-00-34	2.900
W175-C1	-97471.351	0.053	-2975.337	5.800	-158.033247	-565291.816011	89-52-29	180-47-56	2.900
W175-C2	-97471.345	-0.028	-2972.437	5.800	82.477700	-565309.021911	90-40-25	180-47-56	2.900
W175-C3	-97471.379	-0.109	-2969.537	5.799	322.503344	-565216.563329	91-28-21	180-47-56	2.900
W175-C4	-97471.453	-0.189	-2966.638	5.797	561.997900	-565014.469237	92-16-16	180-47-55	2.900
W175-C5	-97471.568	-0.270	-2963.741	5.794	800.915357	-564702.787784	93-04-12	180-47-56	2.900
W175-C6	-97471.724	-0.351	-2960.845	5.789	1039.209475	-564281.566800	93-52-08	180-47-56	2.900
W175-C7	-97471.919	-0.432	-2957.952	5.784	1276.834969	-563750.892784	94-40-04	180-47-56	2.900
W175-C8	-97472.155	-0.512	-2955.061	5.777	1513.747214	-563110.861668	95-28-00	180-47-56	2.900
W175-C9	-97472.431	-0.593	-2952.174	5.769	1749.901650	-562361.588562	96-15-55	180-47-55	2.900
W175-C10	-97472.748	-0.673	-2949.292	5.761	1985.254369	-561503.246746	97-03-51	180-47-56	2.900
W175-C11	-97473.105	-0.753	-2946.414	5.751	2219.761823	-560535.979948	97-51-47	180-47-56	2.900
W175-C12	-97473.501	-0.815	-2943.541	5.742	2399.899620	-559724.162749	98-17-56	180-26-09	2.900
W175-C13	-97473.920	-0.876	-2940.671	5.733	2575.501495	-558848.657746	99-04-18	180-46-22	2.900
W175-C14	-97474.377	-0.953	-2937.808	5.721	2799.942281	-557648.981565	99-50-41	180-46-23	2.900
W175-C15	-97474.873	-1.030	-2934.950	5.708	3023.438028	-556348.043024	100-37-03	180-46-22	2.900
W175-C16	-97475.407	-0.741	-2932.100	3.805	2172.070446	-370886.886972	102-12-16	181-35-13	0.977
W175-24	-97475.614	18.078	-2931.146	6.366	-52987.957957	-620555.931568	16-29-15	94-16-59	19.068
W175-49	-97457.330	15.061	-2925.734	16.300	-44065.707633	-1588522.130588	106-29-15	270-00-00	11.355
W175-50	-97460.552	29.379	-2914.846	20.537	-85635.169799	-2001581.189448	16-29-15	90-00-00	34.000
W175-41	-97427.951	50.363	-2905.197	-50.361	-146315.375512	4906573.677237	286-29-15	90-00-00	62.584
W175-1	-97410.189	16.406	-2965.207	-62.687	-48646.966424	6106312.598846	243-07-55	136-38-40	3.000
W175-2	-97411.545	-33.198	-2967.883	-14.127	98528.415944	1376117.064332	199-46-44	136-38-49	33.839
W175-3	-97443.387	-57.729	-2979.334	-12.473	171993.036596	1215412.995956	182-15-42	162-28-58	25.906
合計				倍面積 面積	6904.513637 3452.2568187	-6904.513637 3452.2568187			240.130

面積（座標法）計算書

地番：W175-4

測点名	[1] X(i)	[2] X(i+1)-X(i-1)	[3] Y(i)	[4] Y(i+1)-Y(i-1)	[2]*[3]	[1]*[4]	方向角	夾角	距離
W175-25	-97478.248	-50.849	-2920.083	-12.808	148484.186403	1248522.723577	104-51-47	88-22-32	2.151
W175-C21	-97478.800	-1.328	-2918.005	4.873	3875.133029	-475005.097842	105-31-39	180-39-52	2.900
W175-C22	-97479.576	-0.928	-2915.211	3.324	2706.154125	-323979.220856	106-00-53	180-29-14	0.551
W175-26	-97479.728	50.036	-2914.681	15.384	-145839.690160	-1499630.129241	16-29-15	90-28-22	52.340
W175-40	-97429.540	51.778	-2899.827	9.485	-150146.009272	-924085.935463	286-29-15	90-00-00	5.600
W175-41	-97427.951	-48.708	-2905.197	-20.257	141506.989873	1973590.895826	196-29-15	90-00-00	52.454
合計				倍面積	586.763998	-586.763998			115.996
				面積	293.3819994	293.3819994			

面積（座標法）計算書

地 番： W175-5

測点名	[1] X(i)	[2] X(i+1)-X(i-1)	[3] Y(i)	[4] Y(i+1)-Y(i-1)	[2]*[3]	[1]*[4]	方向角	夾 角	距 離
W175-26	-97479.728	-50.418	-2914.681	-14.052	146953.634665	1369832.468925	106-00-53	89-31-38	0.835
W175-6	-97479.959	-1.762	-2913.879	5.960	5133.588475	-580955.208221	106-32-19	180-31-26	5.380
W175-27	-97481.490	48.655	-2908.721	20.012	-141522.820926	-1950763.726249	16-29-15	89-56-56	52.338
W175-39	-97431.304	51.950	-2893.867	8.895	-150336.324183	-866637.807891	286-29-15	90-00-00	6.215
W175-40	-97429.540	-48.424	-2899.827	-20.814	140422.425972	2027873.769434	196-29-15	90-00-00	52.340
合計				倍面積	650.504002	-650.504002			117.108
				面 積	325.2520014	325.2520014			

面積（座標法）計算書

地 番： W175-6

測点名	[1] X(i)	[2] X(i+1)-X(i-1)	[3] Y(i)	[4] Y(i+1)-Y(i-1)	[2]*[3]	[1]*[4]	方向角	夾 角	距 離
W175-52	-97467.532	21.591	-2879.334	3.623	-62166.631040	-353083.893486	286-09-46	89-40-31	2.654
W175-51	-97466.793	30.108	-2881.883	6.144	-86768.492351	-598798.083102	16-29-15	270-19-29	30.629
W175-38	-97437.424	35.489	-2873.190	-11.984	-101967.849767	1167718.626821	286-29-15	90-00-00	21.564
W175-39	-97431.304	-44.066	-2893.867	-35.531	127521.897954	3461833.325280	196-29-15	90-00-00	52.338
W175-27	-97481.490	-57.080	-2908.721	8.362	166029.948422	-815112.272298	106-32-19	90-03-04	24.218
W175-28	-97488.384	13.958	-2885.506	29.387	-40275.866640	-2864930.709791	16-29-15	89-56-56	21.746
合計				倍面積	2373.006576	-2373.006576			153.149
				面 積	1186.5032880	1186.5032880			

面積（座標法）計算書

地番：W175-7

測点名	[1] X(i)	[2] X(i+1)-X(i-1)	[3] Y(i)	[4] Y(i+1)-Y(i-1)	[2]*[3]	[1]*[4]	方向角	夾角	距離
W175-37	-97440.716	32.598	-2862.068	-2.448	-93298.506197	238530.272872	286-29-15	90-00-00	11.599
W175-38	-97437.424	-26.078	-2873.190	-19.815	74925.935640	1930695.456210	196-29-15	90-00-00	30.629
W175-51	-97466.793	-32.598	-2881.883	2.448	93944.432044	-238594.109628	106-09-46	89-40-31	11.599
W175-53	-97470.022	26.078	-2870.742	19.815	-74862.098884	-1931341.382057	16-29-15	90-19-29	30.563
合計				倍面積	709.762602	-709.762602			84.390
				面積	354.8813012	354.8813012			

面積（座標法）計算書

地番：W175-8

測点名	[1] X(i)	[2] X(i+1)-X(i-1)	[3] Y(i)	[4] Y(i+1)-Y(i-1)	[2]*[3]	[1]*[4]	方向角	夾角	距離
W175-53	-97470.022	-32.656	-2870.742	2.883	93746.981262	-281044.818129	106-09-46	89-40-31	12.033
W175-55	-97473.372	25.891	-2859.185	20.212	-74028.282252	-1970145.084614	16-29-15	90-19-29	30.495
W175-36	-97444.131	32.656	-2850.530	-2.883	-93086.933624	280970.162951	286-29-15	90-00-00	12.033
W175-37	-97440.716	-25.891	-2862.068	-20.212	74102.937430	1969485.036977	196-29-15	90-00-00	30.563
合計				倍面積	734.702815	-734.702815			85.124
				面積	367.3514075	367.3514075			

面積（座標法）計算書

地番：W175-9-1

測点名	[1] X(i)	[2] X(i+1)-X(i-1)	[3] Y(i)	[4] Y(i+1)-Y(i-1)	[2]*[3]	[1]*[4]	方向角	夾角	距離
W175-36	-97444.131	-20.592	-2850.530	-15.241	58698.540125	1485135.958578	196-29-15	90-00-00	24.071
W175-56	-97467.212	-25.570	-2857.362	1.578	73063.125560	-153791.523989	106-29-15	90-00-00	8.770
W175-65	-97469.701	20.592	-2848.952	15.241	-58666.048196	-1485525.670360	16-29-15	90-00-00	24.071
W175-64	-97446.620	25.570	-2842.121	-1.578	-72673.413778	153759.032061	286-29-15	90-00-00	8.770
合計				倍面積	422.203711	-422.203711			65.682
				面積	211.1018559	211.1018559			

面積（座標法）計算書

地番：W175-9-2

測点名	[1] X(i)	[2] X(i+1)-X(i-1)	[3] Y(i)	[4] Y(i+1)-Y(i-1)	[2]*[3]	[1]*[4]	方向角	夾角	距離
W175-64	-97446.620	-20.592	-2842.121	-15.241	58525.372771	1485173.893156	196-29-15	90-00-00	24.071
W175-65	-97469.701	-25.570	-2848.952	1.578	72848.096381	-153795.451237	106-29-15	90-00-00	8.770
W175-66	-97472.190	20.592	-2840.543	15.241	-58492.880842	-1485563.604939	16-29-15	90-00-00	24.071
W175-63	-97449.109	25.570	-2833.712	-1.578	-72458.384598	153762.959308	286-29-15	90-00-00	8.770
合計				倍面積	422.203711	-422.203711			65.682
				面積	211.1018559	211.1018559			

面積（座標法）計算書

地番：W175-9-3

測点名	[1] X(i)	[2] X(i+1)-X(i-1)	[3] Y(i)	[4] Y(i+1)-Y(i-1)	[2]*[3]	[1]*[4]	方向角	夾角	距離
W175-63	-97449.109	-20.592	-2833.712	-15.241	58352.205416	1485211.827734	196-29-15	90-00-00	24.071
W175-66	-97472.190	-25.570	-2840.543	1.578	72633.067201	-153799.378483	106-29-15	90-00-00	8.770
W175-67	-97474.679	20.592	-2832.134	15.241	-58319.713488	-1485601.539517	16-29-15	90-00-00	24.071
W175-62	-97451.598	25.570	-2825.302	-1.578	-72243.355418	153766.886554	286-29-15	90-00-00	8.770
合計				倍面積	422.203711	-422.203711			65.682
				面積	211.1018559	211.1018559			

面積（座標法）計算書

地番：W175-9-4

測点名	[1] X(i)	[2] X(i+1)-X(i-1)	[3] Y(i)	[4] Y(i+1)-Y(i-1)	[2]*[3]	[1]*[4]	方向角	夾角	距離
W175-62	-97451.598	-20.334	-2825.302	-16.113	57449.570637	1570259.878757	196-29-15	90-00-00	24.071
W175-67	-97474.679	-25.828	-2832.134	2.450	73149.269282	-238833.556575	106-29-15	90-00-00	9.680
W175-69	-97477.426	20.334	-2822.852	16.113	-57399.748148	-1570676.056468	16-29-15	90-00-00	24.071
W175-70	-97454.345	25.828	-2816.020	-2.450	-72733.091571	238783.734086	286-29-15	90-00-00	9.680
合計				倍面積	466.000200	-466.000200			67.502
				面積	233.0001001	233.0001001			

面積（座標法）計算書

地 番： W175-9-5

測点名	[1] X(i)	[2] X(i+1)-X(i-1)	[3] Y(i)	[4] Y(i+1)-Y(i-1)	[2]*[3]	[1]*[4]	方向角	夾 角	距 離
W175-70	-97454.345	-20.100	-2816.020	-16.904	56601.550338	1647390.949972	196-29-15	90-00-00	24.071
W175-69	-97477.426	-26.106	-2822.852	3.389	73693.800272	-330339.617804	106-29-15	90-00-00	10.659
W175-59	-97480.451	20.100	-2812.632	16.904	-56533.434338	-1647832.254438	16-07-16	89-38-01	24.071
W175-34	-97457.326	26.106	-2805.948	-3.389	-73252.495806	330271.501804	286-29-15	90-21-59	10.505
合計				倍面積	509.420466	-509.420466			69.306
				面 積	254.7102330	254.7102330			

面積（座標法）計算書

地番：W175-11

測点名	[1] X(i)	[2] X(i+1)-X(i-1)	[3] Y(i)	[4] Y(i+1)-Y(i-1)	[2]*[3]	[1]*[4]	方向角	夾角	距離
W175-33	-97482.763	-8.343	-2757.599	53.342	23006.871212	-5199930.738182	16-31-40	90-02-25	7.139
W175-11	-97475.919	11.236	-2755.568	-0.367	-30960.775211	35794.122629	331-21-50	134-50-10	5.004
W175-12	-97471.528	18.593	-2757.966	-50.379	-51279.514046	4910559.203574	286-29-15	135-07-25	50.039
W175-34	-97457.326	3.951	-2805.948	-50.944	-11087.040434	4964862.956256	196-07-16	89-38-01	10.670
W175-60	-97467.576	-25.437	-2808.910	48.349	71450.620480	-4712415.706277	106-29-15	90-21-59	53.512
合計				倍面積	1130.161999	-1130.161999			126.364
				面積	565.0809998	565.0809998			

面積（座標法）計算書

地番：W175-12-1

測点名	[1] X(i)	[2] X(i+1)-X(i-1)	[3] Y(i)	[4] Y(i+1)-Y(i-1)	[2]*[3]	[1]*[4]	方向角	夾角	距離
W175-73	-97492.955	1.889	-2816.323	-55.119	-5320.844550	5373756.775270	196-26-57	89-57-42	13.832
W175-32	-97506.220	-26.058	-2820.240	39.116	73490.972637	-3814056.213472	106-33-22	90-06-25	44.894
W175-9	-97519.013	-7.073	-2777.207	53.581	19642.059242	-5225198.427302	61-31-49	134-58-27	12.000
W175-10	-97513.293	10.904	-2766.659	12.087	-30166.315791	-1178618.234239	16-31-40	134-59-51	5.407
W175-74	-97508.110	20.338	-2765.120	-49.665	-56237.569476	4842707.797682	286-29-15	89-57-35	53.398
合計				倍面積	1408.302061	-1408.302061			129.531
				面積	704.1510307	704.1510307			

面積（座標法）計算書

地番：W175-12-2

測点名	[1] X(i)	[2] X(i+1)-X(i-1)	[3] Y(i)	[4] Y(i+1)-Y(i-1)	[2]*[3]	[1]*[4]	方向角	夾角	距離
W175-71	-97480.310	15.019	-2812.591	-51.262	-42241.987264	4997016.059273	196-07-16	89-38-01	0.147
W175-59	-97480.451	-12.645	-2812.632	-3.733	35566.038015	363853.941992	196-26-57	180-19-41	13.037
W175-73	-97492.955	-27.659	-2816.323	47.511	77895.627353	-4631992.976976	106-29-15	90-02-18	53.398
W175-74	-97508.110	-2.515	-2765.120	54.954	6954.711339	-5358413.835426	16-31-40	90-02-25	13.184
W175-72	-97495.470	27.800	-2761.370	-47.470	-76766.087382	4628128.509075	286-29-15	89-57-35	53.417
合計				倍面積	1408.302061	-1408.302061			133.183
				面積	704.1510305	704.1510305			

面積（座標法）計算書

地 番： W175-12-3

測点名	[1] X(i)	[2] X(i+1)-X(i-1)	[3] Y(i)	[4] Y(i+1)-Y(i-1)	[2]*[3]	[1]*[4]	方向角	夾 角	距 離
W175-60	-97467.576	1.035	-2808.910	-50.197	-2906.166290	4892591.521644	196-07-16	89-38-01	13.255
W175-71	-97480.310	-27.894	-2812.591	47.541	78453.230251	-4634271.385359	106-29-15	90-21-59	53.417
W175-72	-97495.470	-3.313	-2761.370	54.737	9147.580724	-5336571.818010	16-31-40	90-02-25	12.358
W175-77	-97483.622	13.266	-2757.854	-1.278	-36586.879734	124596.280771	286-29-15	89-57-35	4.999
W175-76	-97482.204	2.278	-2762.648	-4.539	-6293.512735	442519.896003	16-29-15	270-00-00	0.896
W175-75	-97481.344	14.627	-2762.394	-46.262	-40405.950154	4509727.202889	286-29-15	90-00-00	48.512
合計				倍面積	1408.302061	-1408.302061			133.437
				面 積	704.1510306	704.1510306			

面積（座標法）計算書

地番：W175-12-4

測点名	[1] X(i)	[2] X(i+1)-X(i-1)	[3] Y(i)	[4] Y(i+1)-Y(i-1)	[2]*[3]	[1]*[4]	方向角	夾角	距離
W175-75	-97481.344	0.560	-2762.394	-5.049	-1546.458476	492155.445011	196-29-15	90-00-00	0.896
W175-76	-97482.204	-2.278	-2762.648	4.539	6293.512735	-442519.896003	106-29-15	90-00-00	4.999
W175-77	-97483.622	-0.560	-2757.854	5.049	1543.917151	-492166.946349	16-31-40	90-02-25	0.896
W175-33	-97482.763	2.278	-2757.599	-4.539	-6282.011397	442522.437327	286-29-15	89-57-35	5.000
合計				倍面積	8.960013	-8.960013			11.791
				面積	4.4800066	4.4800066			

面積（座標法）計算書

地番：W175-13

測点名	[1] X(i)	[2] X(i+1)-X(i-1)	[3] Y(i)	[4] Y(i+1)-Y(i-1)	[2]*[3]	[1]*[4]	方向角	夾角	距離
W175-31	-97499.762	-28.288	-2842.907	0.963	80420.425487	-93917.650096	104-50-16	88-21-01	8.956
W175-8	-97502.056	-6.458	-2834.250	22.667	18304.384693	-2210071.936145	106-33-22	181-43-06	14.616
W175-32	-97506.220	21.604	-2820.240	21.618	-60929.824493	-2107909.071108	16-26-57	89-53-35	26.869
W175-59	-97480.451	32.453	-2812.632	-14.973	-91278.194878	1459582.367828	286-29-15	90-02-18	23.550
W175-58	-97473.767	-19.311	-2835.213	-30.275	54750.953192	2951048.545520	196-29-15	90-00-00	27.109
合計				倍面積	1267.744001	-1267.744001			101.100
				面積	633.8720007	633.8720007			

面積（座標法）計算書

地番：W175-14

測点名	[1] X(i)	[2] X(i+1)-X(i-1)	[3] Y(i)	[4] Y(i+1)-Y(i-1)	[2]*[3]	[1]*[4]	方向角	夾角	距離
W175-58	-97473.767	32.550	-2835.213	-14.455	-92286.836063	1408980.052679	286-29-15	90-00-00	23.099
W175-56	-97467.212	-20.077	-2857.362	-30.031	57367.311612	2927083.873615	196-29-15	90-00-00	27.775
W175-30	-97493.844	-32.550	-2865.244	14.455	93264.367400	-1409270.265338	104-50-16	88-21-01	23.108
W175-31	-97499.762	20.077	-2842.907	30.031	-57077.098953	-2928061.404951	16-29-15	91-38-59	27.109
合計				倍面積	1267.743995	-1267.743995			101.091
				面積	633.8719980	633.8719980			

面積（座標法）計算書

地番：W175-15

測点名	[1] X(i)	[2] X(i+1)-X(i-1)	[3] Y(i)	[4] Y(i+1)-Y(i-1)	[2]*[3]	[1]*[4]	方向角	夾角	距離
W175-29	-97491.259	-23.282	-2875.003	3.633	66935.353987	-354190.677651	104-50-16	88-21-01	10.095
W175-30	-97493.844	17.887	-2865.244	15.818	-51251.933990	-1542182.297571	16-29-15	91-38-59	21.351
W175-55	-97473.372	23.282	-2859.185	-3.633	-66567.076017	354125.691618	286-09-46	89-40-31	10.091
W175-54	-97470.563	-17.887	-2868.878	-15.818	51316.920022	1541814.019600	196-29-15	90-19-29	21.584
合計				倍面積	433.264002	-433.264002			63.121
				面積	216.6320013	216.6320013			

面積（座標法）計算書

地番：W175-16

測点名	[1] X(i)	[2] X(i+1)-X(i-1)	[3] Y(i)	[4] Y(i+1)-Y(i-1)	[2]*[3]	[1]*[4]	方向角	夾角	距離
W175-28	-97488.384	-21.713	-2885.506	-3.270	62654.236723	318806.133001	106-32-19	90-03-04	3.027
W175-7	-97489.246	-2.875	-2882.604	10.502	8288.132521	-1023875.536909	104-50-16	178-17-57	7.863
W175-29	-97491.259	18.683	-2875.003	13.727	-53713.463569	-1338231.356528	16-29-15	91-38-59	21.584
W175-54	-97470.563	23.727	-2868.878	-4.331	-68070.050241	422121.623526	286-09-46	89-40-31	10.887
W175-52	-97467.532	-17.821	-2879.334	-16.628	51313.568568	1620706.712909	196-29-15	90-19-29	21.746
合計				倍面積	472.424001	-472.424001			65.107
				面積	236.2120007	236.2120007			

面積（座標法）計算書

地 番： W175-17

測点名	[1] X(i)	[2] X(i+1)-X(i-1)	[3] Y(i)	[4] Y(i+1)-Y(i-1)	[2]*[3]	[1]*[4]	方向角	夾 角	距 離
W175-24	-97475.614	-18.691	-2931.146	-3.532	54784.914597	344266.841016	102-12-16	85-43-01	1.923
W175-C17	-97476.020	-1.052	-2929.266	4.707	3082.997345	-458818.165577	102-52-09	180-39-53	2.900
W175-C18	-97476.666	-1.325	-2926.439	5.647	3876.178749	-550411.733779	103-32-01	180-39-52	2.900
W175-C19	-97477.345	-1.390	-2923.619	5.631	4063.678193	-548880.862999	104-11-54	180-39-53	2.900
W175-C20	-97478.056	-0.903	-2920.808	3.536	2638.931919	-344642.118960	104-51-47	180-39-53	0.749
W175-25	-97478.248	17.504	-2920.083	5.962	-51112.702343	-581148.494268	16-29-15	91-37-28	18.455
W175-50	-97460.552	20.919	-2914.846	-5.650	-60974.633009	550687.330895	286-29-15	90-00-00	11.355
W175-49	-97457.330	-15.061	-2925.734	-16.300	44065.707633	1588522.130588	196-29-15	90-00-00	19.068
合計				倍面積	425.073084	-425.073084			60.250
				面 積	212.5365423	212.5365423			