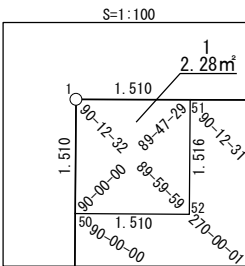
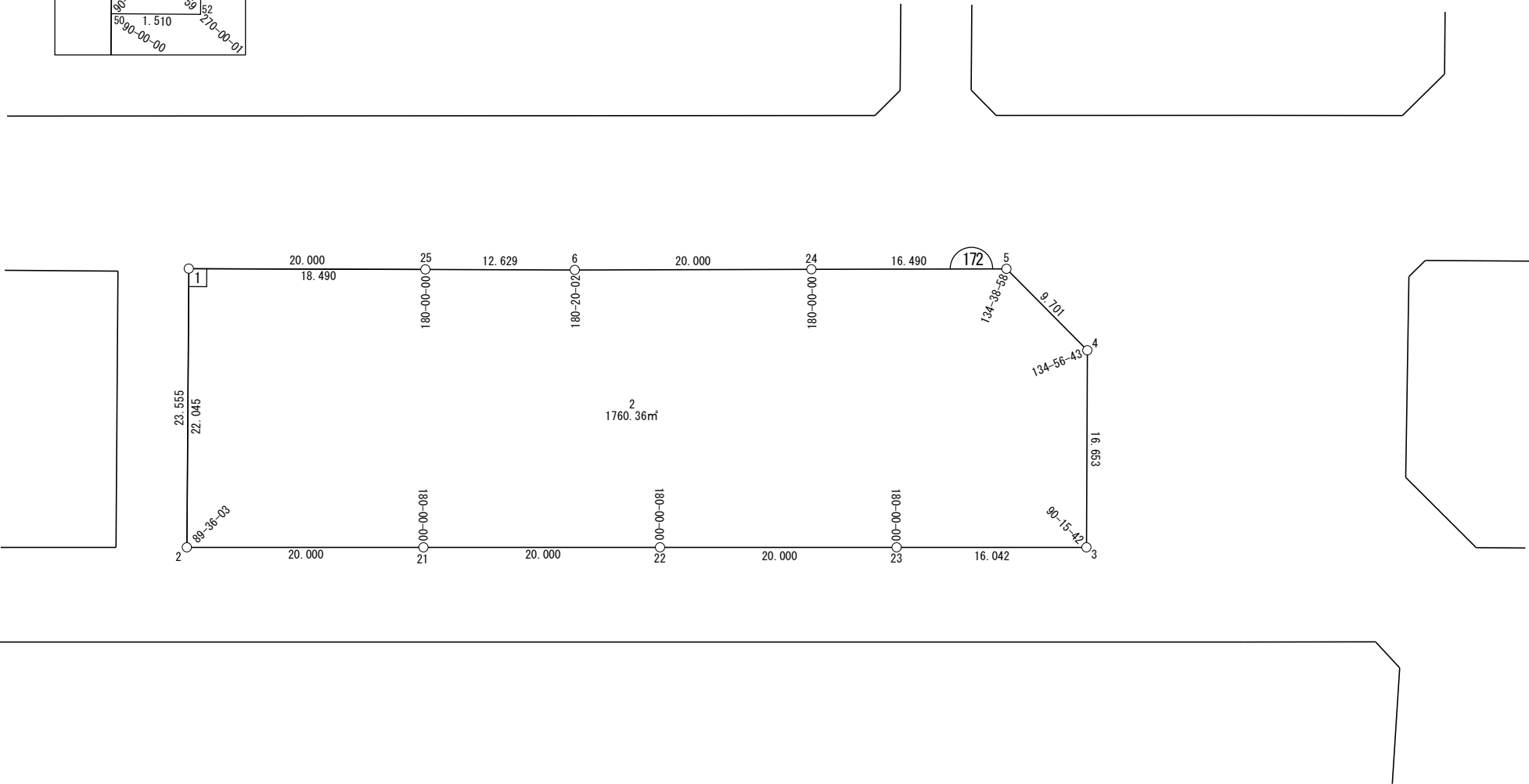


世界測地系



面積一覧表

地番名	地積
W172-1	2.28 m ²
W172-2	1760.36 m ²
合計	1762.64 m ²



座 標 一 覧 表

測 点 名	X 座 標	Y 座 標
W172-1	-97349.092	-3062.621
W172-2	-97371.672	-3069.328
W172-3	-97392.814	-2996.284
W172-4	-97376.839	-2991.581
W172-5	-97368.325	-2996.232
W172-6	-97358.268	-3031.309
W172-21	-97377.233	-3050.116
W172-22	-97382.793	-3030.905
W172-23	-97388.354	-3011.693
W172-24	-97363.780	-3012.084
W172-25	-97354.716	-3043.429
W172-50	-97350.539	-3063.051
W172-51	-97349.517	-3061.172
W172-52	-97350.969	-3061.604

面積（座標法）計算書

地番：W172-1

測点名	[1] X(i)	[2] X(i+1)-X(i-1)	[3] Y(i)	[4] Y(i+1)-Y(i-1)	[2]*[3]	[1]*[4]	方向角	夾角	距離
W172-1	-97349.092	-1.023	-3062.621	-1.879	3132.652560	182916.838283	196-32-30	90-12-32	1.510
W172-50	-97350.539	-1.877	-3063.051	1.018	5750.638564	-99062.883539	106-32-30	90-00-00	1.510
W172-52	-97350.969	1.023	-3061.604	1.879	-3131.611702	-182920.365917	16-32-29	89-59-59	1.516
W172-51	-97349.517	1.877	-3061.172	-1.018	-5747.110930	99061.842680	286-19-58	89-47-29	1.510
合計				倍面積	4.568492	-4.568492			6.046
				面積	2.2842463	2.2842463			

面 積 (座 標 法) 計 算 書

地 番 : W172-2

測点名	[1] X(i)	[2] X(i+1)-X(i-1)	[3] Y(i)	[4] Y(i+1)-Y(i-1)	[2]*[3]	[1]*[4]	方向角	夾 角	距 離
W172-51	-97349.517	3.747	-3061.172	-18.175	-11470.021117	1769355.605524	196-32-29	90-12-31	1.516
W172-52	-97350.969	-1.023	-3061.604	-1.879	3131.611702	182920.365917	286-32-30	270-00-01	1.510
W172-50	-97350.539	-20.703	-3063.051	-7.724	63413.064183	751931.435994	196-32-30	90-00-00	22.045
W172-2	-97371.672	-26.693	-3069.328	12.935	81929.823348	-1259502.503124	106-08-33	89-36-03	20.000
W172-21	-97377.233	-11.121	-3050.116	38.423	33920.880434	-3741515.923053	106-08-33	180-00-00	20.000
W172-22	-97382.793	-11.121	-3030.905	38.423	33707.226503	-3741729.576984	106-08-33	180-00-00	20.000
W172-23	-97388.354	-10.021	-3011.693	34.621	30179.351564	-3371674.374380	106-08-33	180-00-00	16.042
W172-3	-97392.814	11.515	-2996.284	20.113	-34502.858359	-1958818.418132	16-24-15	90-15-42	16.653
W172-4	-97376.839	24.489	-2991.581	0.052	-73259.527991	-5040.708150	331-20-58	134-56-43	9.701
W172-5	-97368.325	13.058	-2996.232	-20.503	-39125.384422	1996308.858400	285-59-56	134-38-58	16.490
W172-24	-97363.780	10.057	-3012.084	-35.077	-30293.660214	3415196.591629	285-59-56	180-00-00	20.000
W172-6	-97358.268	9.064	-3031.309	-31.345	-27475.767492	3051696.031721	286-19-58	180-20-02	12.629
W172-25	-97354.716	8.751	-3043.429	-29.863	-26634.014125	2907351.890624	286-19-58	180-00-00	18.490
合計				倍面積	3520.724013	-3520.724013			195.076
				面 積	1760.3620065	1760.3620065			