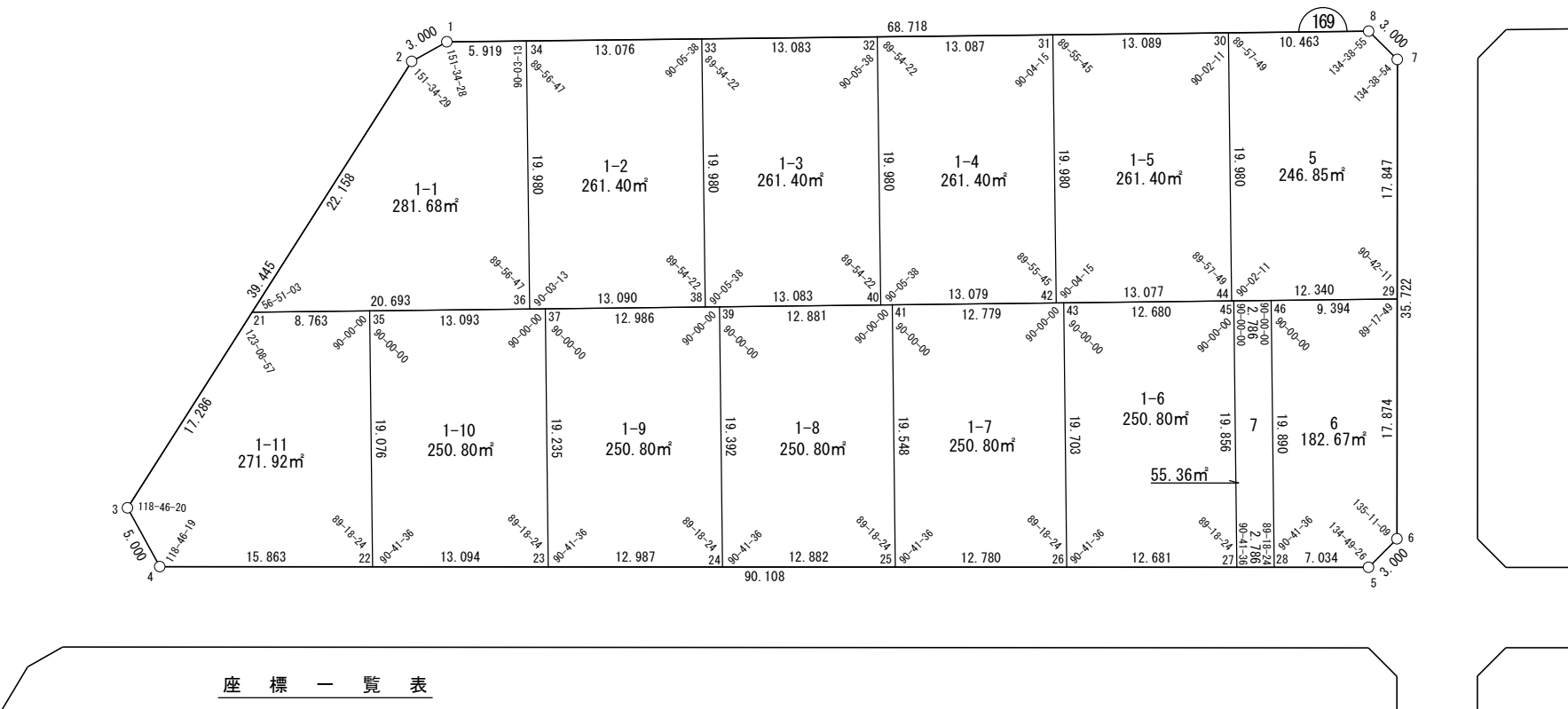
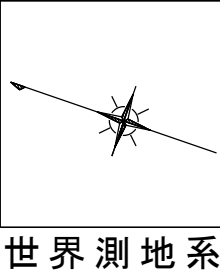


面積一覧表

地番名	地積
W169-1-1	281.68 m ²
W169-1-2	261.40 m ²
W169-1-3	261.40 m ²
W169-1-4	261.40 m ²
W169-1-5	261.40 m ²
W169-1-6	250.80 m ²
W169-1-7	250.80 m ²
W169-1-8	250.80 m ²
W169-1-9	250.80 m ²
W169-1-10	250.80 m ²
W169-1-11	271.92 m ²
W169-5	246.85 m ²
W169-6	182.67 m ²
W169-7	55.36 m ²
合計	3338.08 m ²



測点名	X座標	Y座標
W169-1	-97349.081	-3192.601
W169-2	-97347.077	-3194.833
W169-3	-97337.878	-3233.190
W169-4	-97341.578	-3236.553
W169-5	-97426.792	-3207.262
W169-6	-97428.101	-3204.562
W169-7	-97416.495	-3170.779
W169-8	-97413.792	-3169.478
W169-21	-97341.909	-3216.381
W169-22	-97356.580	-3231.396
W169-23	-97368.963	-3227.140
W169-24	-97381.244	-3222.918
W169-25	-97393.427	-3218.731
W169-26	-97405.513	-3214.576
W169-27	-97417.505	-3210.454
W169-28	-97420.140	-3209.549
W169-29	-97422.293	-3187.658

測点名	X座標	Y座標
W169-30	-97403.938	-3172.999
W169-31	-97391.612	-3177.403
W169-32	-97379.289	-3181.807
W169-33	-97366.968	-3186.209
W169-34	-97354.655	-3190.609
W169-35	-97350.161	-3213.432
W169-36	-97361.395	-3209.418
W169-37	-97362.490	-3209.027
W169-38	-97373.722	-3205.013
W169-39	-97374.719	-3204.657
W169-40	-97386.042	-3200.611
W169-41	-97386.849	-3200.323
W169-42	-97398.359	-3196.210
W169-43	-97398.884	-3196.023
W169-44	-97410.673	-3191.810
W169-45	-97410.824	-3191.756
W169-46	-97413.447	-3190.819

面積（座標法）計算書

地 番： W169-1-1

測点名	[1] X(i)	[2] X(i+1)-X(i-1)	[3] Y(i)	[4] Y(i+1)-Y(i-1)	[2]*[3]	[1]*[4]	方向角	夾 角	距 離
W169-34	-97354.655	12.315	-3190.609	16.817	-39290.877321	-1637234.376938	340-20-15	90-03-13	5.919
W169-1	-97349.081	7.578	-3192.601	-4.224	-24193.606705	411229.045445	311-54-43	151-34-28	3.000
W169-2	-97347.077	7.172	-3194.833	-23.780	-22912.884176	2314915.600595	283-29-12	151-34-29	22.158
W169-21	-97341.909	-14.319	-3216.381	-14.585	46054.016532	1419694.549403	160-20-15	56-51-03	20.693
W169-36	-97361.395	-12.746	-3209.418	25.772	40906.712065	-2509168.178900	70-17-02	89-56-47	19.980
合計				倍面積	563.360394	-563.360394			71.750
				面 積	281.6801972	281.6801972			

面積（座標法）計算書

地番：W169-1-2

測点名	[1] X(i)	[2] X(i+1)-X(i-1)	[3] Y(i)	[4] Y(i+1)-Y(i-1)	[2]*[3]	[1]*[4]	方向角	夾角	距離
W169-33	-97366.968	19.067	-3186.209	14.404	-60752.353269	-1402508.096379	340-20-15	90-05-38	13.076
W169-34	-97354.655	5.573	-3190.609	-23.209	-17781.204506	2259476.721900	250-17-02	89-56-47	19.980
W169-36	-97361.395	-19.067	-3209.418	-14.404	61194.880489	1402427.821190	160-20-15	90-03-13	13.090
W169-38	-97373.722	-5.573	-3205.013	23.209	17861.479695	-2259919.249120	70-14-37	89-54-22	19.980
合計				倍面積	522.802409	-522.802409			66.126
				面積	261.4012047	261.4012047			

面積（座標法）計算書

地 番： W169-1-3

測点名	[1] X(i)	[2] X(i+1)-X(i-1)	[3] Y(i)	[4] Y(i+1)-Y(i-1)	[2]*[3]	[1]*[4]	方向角	夾 角	距 離
W169-32	-97379.289	19.074	-3181.807	14.402	-60689.389749	-1402456.192735	340-20-15	90-05-38	13.083
W169-33	-97366.968	5.566	-3186.209	-23.206	-17735.681177	2259533.165242	250-14-37	89-54-22	19.980
W169-38	-97373.722	-19.074	-3205.013	-14.402	61132.025032	1402376.025609	160-20-15	90-05-38	13.083
W169-40	-97386.042	-5.566	-3200.611	23.206	17815.848303	-2259975.800525	70-14-37	89-54-22	19.980
合計				倍面積	522.802409	-522.802409			66.126
				面 積	261.4012046	261.4012046			

面積（座標法）計算書

地番：W169-1-4

測点名	[1] X(i)	[2] X(i+1)-X(i-1)	[3] Y(i)	[4] Y(i+1)-Y(i-1)	[2]*[3]	[1]*[4]	方向角	夾角	距離
W169-31	-97391.612	19.070	-3177.403	14.403	-60593.428743	-1402764.770608	340-20-15	90-04-15	13.087
W169-32	-97379.289	5.570	-3181.807	-23.208	-17723.162141	2259950.133496	250-14-37	89-54-22	19.980
W169-40	-97386.042	-19.070	-3200.611	-14.403	61036.002279	1402684.541735	160-20-15	90-05-38	13.079
W169-42	-97398.359	-5.570	-3196.210	23.208	17803.391014	-2260392.707032	70-16-00	89-55-45	19.980
合計				倍面積	522.802408	-522.802408			66.126
				面積	261.4012044	261.4012044			

面積（座標法）計算書

地番：W169-1-5

測点名	[1] X(i)	[2] X(i+1)-X(i-1)	[3] Y(i)	[4] Y(i+1)-Y(i-1)	[2]*[3]	[1]*[4]	方向角	夾角	距離
W169-30	-97403.938	19.061	-3172.999	14.407	-60479.560318	-1403270.038116	340-20-15	90-02-11	13.089
W169-31	-97391.612	5.580	-3177.403	-23.211	-17728.555086	2260563.856004	250-16-00	89-55-45	19.980
W169-42	-97398.359	-19.061	-3196.210	-14.407	60921.979446	1403189.654835	160-20-15	90-04-15	13.077
W169-44	-97410.673	-5.580	-3191.810	23.211	17808.938368	-2261006.275132	70-18-04	89-57-49	19.980
合計				倍面積	522.802409	-522.802409			66.126
				面積	261.4012049	261.4012049			

面積（座標法）計算書

地番：W169-1-6

測点名	[1] X(i)	[2] X(i+1)-X(i-1)	[3] Y(i)	[4] Y(i+1)-Y(i-1)	[2]*[3]	[1]*[4]	方向角	夾角	距離
W169-26	-97405.513	-18.622	-3214.576	-14.432	59861.058718	1405736.192536	161-01-51	90-41-36	12.681
W169-27	-97417.505	-5.311	-3210.454	22.820	17050.576261	-2223103.778098	70-20-15	89-18-24	19.856
W169-45	-97410.824	18.622	-3191.756	14.432	-59436.103308	-1405812.839125	340-20-15	90-00-00	12.680
W169-43	-97398.884	5.311	-3196.023	-22.820	-16973.929672	2222678.822688	250-20-15	90-00-00	19.703
合計				倍面積	501.601999	-501.601999			64.920
				面積	250.8009998	250.8009998			

面積（座標法）計算書

地番：W169-1-7

測点名	[1] X(i)	[2] X(i+1)-X(i-1)	[3] Y(i)	[4] Y(i+1)-Y(i-1)	[2]*[3]	[1]*[4]	方向角	夾角	距離
W169-25	-97393.427	-18.664	-3218.731	-14.254	60073.927755	1388224.985432	161-01-51	90-41-36	12.780
W169-26	-97405.513	-5.457	-3214.576	22.708	17541.086899	-2211905.616385	70-20-15	89-18-24	19.703
W169-43	-97398.884	18.664	-3196.023	14.254	-59650.104859	-1388302.764537	340-20-15	90-00-00	12.779
W169-41	-97386.849	5.457	-3200.323	-22.708	-17463.307794	2211481.793490	250-20-15	90-00-00	19.548
合計				倍面積	501.602001	-501.602001			64.810
				面積	250.8010005	250.8010005			

面積（座標法）計算書

地番：W169-1-8

測点名	[1] X(i)	[2] X(i+1)-X(i-1)	[3] Y(i)	[4] Y(i+1)-Y(i-1)	[2]*[3]	[1]*[4]	方向角	夾角	距離
W169-24	-97381.244	-18.708	-3222.918	-14.074	60293.688491	1370528.213801	161-01-51	90-41-36	12.882
W169-25	-97393.427	-5.605	-3218.731	22.596	18041.535709	-2200672.926540	70-20-15	89-18-24	19.548
W169-41	-97386.849	18.708	-3200.323	14.074	-59870.972774	-1370607.100085	340-20-15	90-00-00	12.881
W169-39	-97374.719	5.605	-3204.657	-22.596	-17962.649425	2200250.210823	250-20-15	90-00-00	19.392
合計				倍面積	501.602000	-501.602000			64.703
				面積	250.8010004	250.8010004			

面積（座標法）計算書

地番：W169-1-9

測点名	[1] X(i)	[2] X(i+1)-X(i-1)	[3] Y(i)	[4] Y(i+1)-Y(i-1)	[2]*[3]	[1]*[4]	方向角	夾角	距離
W169-23	-97368.963	-18.754	-3227.140	-13.892	60520.645210	1352640.145206	161-01-51	90-41-36	12.987
W169-24	-97381.244	-5.756	-3222.918	22.483	18552.299876	-2189406.131237	70-20-15	89-18-24	19.392
W169-39	-97374.719	18.754	-3204.657	13.892	-60099.010096	-1352720.112090	340-20-15	90-00-00	12.986
W169-37	-97362.490	5.756	-3209.027	-22.483	-18472.332991	2188984.496124	250-20-15	90-00-00	19.235
合計				倍面積	501.601997	-501.601997			64.600
				面積	250.8009989	250.8009989			

面積（座標法）計算書

地番：W169-1-10

測点名	[1] X(i)	[2] X(i+1)-X(i-1)	[3] Y(i)	[4] Y(i+1)-Y(i-1)	[2]*[3]	[1]*[4]	方向角	夾角	距離
W169-22	-97356.580	-18.802	-3231.396	-13.708	60755.121517	1334554.798561	161-01-51	90-41-36	13.094
W169-23	-97368.963	-5.910	-3227.140	22.370	19073.779151	-2178105.691067	70-20-15	89-18-24	19.235
W169-37	-97362.490	18.802	-3209.027	13.708	-60334.539110	-1334635.818155	340-20-15	90-00-00	13.093
W169-35	-97350.161	5.910	-3213.432	-22.370	-18992.759557	2177685.108660	250-20-15	90-00-00	19.076
合計				倍面積	501.602000	-501.602000			64.498
				面積	250.8010004	250.8010004			

面積（座標法）計算書

地 番： W169-1-11

測点名	[1] X(i)	[2] X(i+1)-X(i-1)	[3] Y(i)	[4] Y(i+1)-Y(i-1)	[2]*[3]	[1]*[4]	方向角	夾 角	距 離
W169-35	-97350.161	14.671	-3213.432	15.016	-47144.071754	-1461766.523443	340-20-15	90-00-00	8.763
W169-21	-97341.909	12.284	-3216.381	-19.758	-39508.745130	1923310.534848	283-29-12	123-08-57	17.286
W169-3	-97337.878	0.331	-3233.190	-20.172	-1070.057296	1963510.430979	222-15-32	118-46-20	5.000
W169-4	-97341.578	-18.702	-3236.553	1.794	60531.577154	-174645.479968	161-01-51	118-46-19	15.863
W169-22	-97356.580	-8.583	-3231.396	23.121	27735.139742	-2250952.805130	70-20-15	89-18-24	19.076
合計				倍面積	543.842714	-543.842714			65.988
				面 積	271.9213570	271.9213570			

面積（座標法）計算書

地 番： W169-5

測点名	[1] X(i)	[2] X(i+1)-X(i-1)	[3] Y(i)	[4] Y(i+1)-Y(i-1)	[2]*[3]	[1]*[4]	方向角	夾 角	距 離
W169-44	-97410.673	-18.355	-3191.810	-14.659	58586.263992	1427923.244656	160-20-15	90-02-11	12.340
W169-29	-97422.293	-5.822	-3187.658	21.031	18557.443406	-2048916.194153	71-02-26	90-42-11	17.847
W169-7	-97416.495	8.502	-3170.779	18.180	-26957.655886	-1770986.431101	25-41-20	134-38-54	3.000
W169-8	-97413.792	12.557	-3169.478	-2.220	-39797.758234	216295.400668	340-20-15	134-38-55	10.463
W169-30	-97403.938	3.118	-3172.999	-22.332	-9894.591311	2175190.277964	250-18-04	89-57-49	19.980
合計				倍面積	493.701965	-493.701965			63.630
				面 積	246.8509829	246.8509829			

面積（座標法）計算書

地 番： W169-6

測点名	[1] X(i)	[2] X(i+1)-X(i-1)	[3] Y(i)	[4] Y(i+1)-Y(i-1)	[2]*[3]	[1]*[4]	方向角	夾 角	距 離
W169-28	-97420.140	-13.345	-3209.549	-16.443	42831.382647	1601925.421144	161-01-51	90-41-36	7.034
W169-5	-97426.792	-7.961	-3207.262	4.987	25532.367158	-485822.753024	115-51-17	134-49-26	3.000
W169-6	-97428.101	4.499	-3204.562	19.604	-14417.032643	-1910011.595505	71-02-26	135-11-09	17.874
W169-29	-97422.293	14.653	-3187.658	13.744	-46709.905784	-1338927.917518	340-20-15	89-17-49	9.394
W169-46	-97413.447	2.154	-3190.819	-21.891	-6871.469379	2132471.502906	250-20-15	90-00-00	19.890
合計				倍面積	365.341998	-365.341998			57.192
				面 積	182.6709991	182.6709991			

面積（座標法）計算書

地番：W169-7

測点名	[1] X(i)	[2] X(i+1)-X(i-1)	[3] Y(i)	[4] Y(i+1)-Y(i-1)	[2]*[3]	[1]*[4]	方向角	夾角	距離
W169-27	-97417.505	-9.316	-3210.454	-17.793	29908.166410	1733324.391686	161-01-51	90-41-36	2.786
W169-28	-97420.140	4.058	-3209.549	19.636	-13024.081588	-1912911.511589	70-20-15	89-18-24	19.890
W169-46	-97413.447	9.316	-3190.819	17.793	-29725.242951	-1733252.190229	340-20-15	90-00-00	2.786
W169-45	-97410.824	-4.058	-3191.756	-19.636	12951.880131	1912728.588129	250-20-15	90-00-00	19.856
合計				倍面積	110.722002	-110.722002			45.318
				面積	55.3610013	55.3610013			