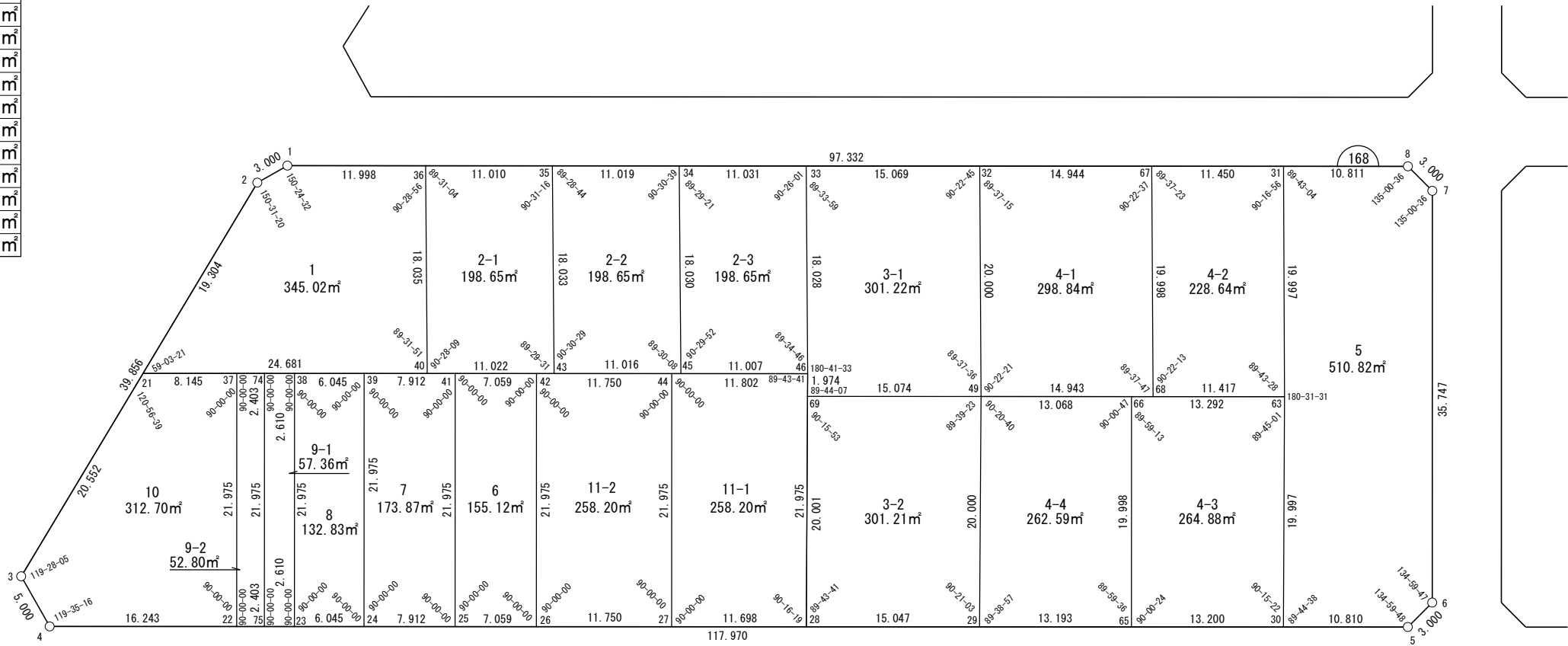


面積一覧表

地番名	面積
W168-1	345.02 m ²
W168-2-1	198.65 m ²
W168-2-2	198.65 m ²
W168-2-3	198.65 m ²
W168-3-1	301.22 m ²
W168-3-2	301.21 m ²
W168-4-1	298.84 m ²
W168-4-2	228.64 m ²
W168-4-3	264.88 m ²
W168-4-4	262.59 m ²
W168-5	510.82 m ²
W168-6	155.12 m ²
W168-7	173.87 m ²
W168-8	132.83 m ²
W168-9-1	57.36 m ²
W168-9-2	52.80 m ²
W168-10	312.70 m ²
W168-11-1	258.20 m ²
W168-11-2	258.20 m ²
合計	4510.25 m ²



世界測地系



座 標 一 覧 表

測 点 名	X 座 標	Y 座 標
W168-1	-97336.683	-3244.565
W168-2	-97334.697	-3246.814
W168-3	-97326.431	-3285.803
W168-4	-97330.180	-3289.112
W168-5	-97441.740	-3250.755
W168-6	-97443.056	-3248.060
W168-7	-97431.429	-3214.256
W168-8	-97428.733	-3212.939
W168-21	-97330.693	-3265.698
W168-22	-97345.541	-3283.831
W168-23	-97350.281	-3282.201
W168-24	-97355.997	-3280.235
W168-25	-97363.480	-3277.663
W168-26	-97370.155	-3275.368

測 点 名	X 座 標	Y 座 標
W168-27	-97381.266	-3271.547
W168-28	-97392.329	-3267.744
W168-29	-97406.558	-3262.852
W168-30	-97431.517	-3254.270
W168-31	-97418.509	-3216.452
W168-32	-97393.547	-3225.028
W168-33	-97379.296	-3229.925
W168-34	-97368.863	-3233.509
W168-35	-97358.442	-3237.089
W168-36	-97348.030	-3240.667
W168-37	-97338.396	-3263.050
W168-38	-97343.136	-3261.420
W168-39	-97348.852	-3259.455
W168-40	-97354.033	-3257.673

測 点 名	X 座 標	Y 座 標
W168-41	-97356.335	-3256.882
W168-42	-97363.010	-3254.587
W168-43	-97364.456	-3254.090
W168-44	-97374.121	-3250.766
W168-45	-97374.874	-3250.508
W168-46	-97385.282	-3246.929
W168-49	-97400.171	-3243.899
W168-63	-97425.100	-3235.331
W168-65	-97419.034	-3258.562
W168-66	-97412.529	-3239.652
W168-67	-97407.680	-3220.173
W168-68	-97414.302	-3239.042
W168-69	-97385.915	-3248.799
W168-74	-97340.668	-3262.269
W168-75	-97347.813	-3283.050

面積（座標法）計算書

地 番： W168-1

測点名	[1] X(i)	[2] X(i+1)-X(i-1)	[3] Y(i)	[4] Y(i+1)-Y(i-1)	[2]*[3]	[1]*[4]	方向角	夾 角	距 離
W168-36	-97348.030	17.350	-3240.667	13.108	-56226.863149	-1276051.475856	341-02-20	90-28-56	11.998
W168-1	-97336.683	13.333	-3244.565	-6.147	-43259.035688	598340.892233	311-26-52	150-24-32	3.000
W168-2	-97334.697	5.989	-3246.814	-21.133	-19446.405880	2056962.519363	281-58-12	150-31-20	19.304
W168-21	-97330.693	-19.336	-3265.698	-10.859	63146.163821	1056961.632953	161-01-33	59-03-21	24.681
W168-40	-97354.033	-17.336	-3257.673	25.031	56476.189842	-2436903.617639	70-33-24	89-31-51	18.035
合計				倍面積	690.048945	-690.048945			77.018
				面 積	345.0244728	345.0244728			

面積（座標法）計算書

地番：W168-2-1

測点名	[1] X(i)	[2] X(i+1)-X(i-1)	[3] Y(i)	[4] Y(i+1)-Y(i-1)	[2]*[3]	[1]*[4]	方向角	夾角	距離
W168-35	-97358.442	16.427	-3237.089	13.423	-53174.205001	-1306833.694022	341-02-20	90-31-16	11.010
W168-36	-97348.030	4.409	-3240.667	-20.584	-14288.014235	2003811.834202	250-33-24	89-31-04	18.035
W168-40	-97354.033	-16.427	-3257.673	-13.423	53512.329084	1306774.512760	161-01-33	90-28-09	11.022
W168-43	-97364.456	-4.409	-3254.090	20.584	14347.195498	-2004149.958285	70-31-04	89-29-31	18.033
合計				倍面積	397.305345	-397.305345			58.100
				面積	198.6526727	198.6526727			

面積（座標法）計算書

地番：W168-2-2

測点名	[1] X(i)	[2] X(i+1)-X(i-1)	[3] Y(i)	[4] Y(i+1)-Y(i-1)	[2]*[3]	[1]*[4]	方向角	夾角	距離
W168-34	-97368.863	16.431	-3233.509	13.419	-53131.122521	-1306554.412276	341-02-20	90-30-39	11.019
W168-35	-97358.442	4.407	-3237.089	-20.581	-14265.679415	2003701.803604	250-31-04	89-28-44	18.033
W168-43	-97364.456	-16.431	-3254.090	-13.419	53469.292000	1306495.277196	161-01-33	90-30-29	11.016
W168-45	-97374.874	-4.407	-3250.508	20.581	14324.814495	-2004039.973083	70-31-41	89-30-08	18.030
合計				倍面積	397.304559	-397.304559			58.098
				面積	198.6522796	198.6522796			

面積（座標法）計算書

地番：W168-2-3

測点名	[1] X(i)	[2] X(i+1)-X(i-1)	[3] Y(i)	[4] Y(i+1)-Y(i-1)	[2]*[3]	[1]*[4]	方向角	夾角	距離
W168-45	-97374.874	-16.419	-3250.508	-13.420	53370.021671	1306794.815551	161-01-33	90-29-52	11.007
W168-46	-97385.282	-4.422	-3246.929	20.583	14358.572842	-2004508.112725	70-36-19	89-34-46	18.028
W168-33	-97379.296	16.419	-3229.925	13.420	-53032.065289	-1306854.162578	341-02-20	90-26-01	11.031
W168-34	-97368.863	4.422	-3233.509	-20.583	-14299.225816	2004170.156343	250-31-41	89-29-21	18.030
合計				倍面積	397.303408	-397.303408			58.096
				面積	198.6517042	198.6517042			

面積（座標法）計算書

地 番： W168-3-1

測点名	[1] X(i)	[2] X(i+1)-X(i-1)	[3] Y(i)	[4] Y(i+1)-Y(i-1)	[2]*[3]	[1]*[4]	方向角	夾 角	距 離
W168-33	-97379.296	8.265	-3229.925	-21.901	-26695.849742	2132700.949129	250-36-19	89-33-59	18.028
W168-46	-97385.282	-6.619	-3246.929	-18.874	21492.589169	1838061.448172	251-17-52	180-41-33	1.974
W168-69	-97385.915	-14.889	-3248.799	3.030	48370.055060	-295064.685649	161-01-59	89-44-07	15.074
W168-49	-97400.171	-7.632	-3243.899	23.771	24758.301927	-2315255.197915	70-39-35	89-37-36	20.000
W168-32	-97393.547	20.875	-3225.028	13.975	-67322.656313	-1361044.953837	341-02-20	90-22-45	15.069
合計				倍面積	602.440100	-602.440100			70.145
				面 積	301.2200504	301.2200504			

面積（座標法）計算書

地 番： W168-3-2

測点名	[1] X(i)	[2] X(i+1)-X(i-1)	[3] Y(i)	[4] Y(i+1)-Y(i-1)	[2]*[3]	[1]*[4]	方向角	夾 角	距 離
W168-69	-97385.915	7.842	-3248.799	-23.845	-25477.950969	2322140.189136	251-17-52	90-15-53	20.001
W168-28	-97392.329	-20.643	-3267.744	-14.053	67454.542092	1368655.300184	161-01-33	89-43-41	15.047
W168-29	-97406.558	-7.842	-3262.852	23.845	25588.158439	-2322632.404833	71-22-36	90-21-03	20.000
W168-49	-97400.171	20.643	-3243.899	14.053	-66962.326394	-1368765.507653	341-01-59	89-39-23	15.074
合計				倍面積	602.423166	-602.423166			70.122
				面 積	301.2115834	301.2115834			

面積（座標法）計算書

地番：W168-4-1

測点名	[1] X(i)	[2] X(i+1)-X(i-1)	[3] Y(i)	[4] Y(i+1)-Y(i-1)	[2]*[3]	[1]*[4]	方向角	夾角	距離
W168-67	-97407.680	20.755	-3220.173	14.014	-66834.300103	-1365090.387009	341-02-20	90-22-37	14.944
W168-32	-97393.547	7.509	-3225.028	-23.727	-24217.485922	2310825.096999	250-39-35	89-37-15	20.000
W168-49	-97400.171	-20.755	-3243.899	-14.014	67326.744439	1364985.151148	161-01-56	90-22-21	14.943
W168-68	-97414.302	-7.509	-3239.042	23.727	24322.721782	-2311317.541336	70-39-43	89-37-47	19.998
合計				倍面積	597.680196	-597.680196			69.885
				面積	298.8400983	298.8400983			

面積（座標法）計算書

地番：W168-4-2

測点名	[1] X(i)	[2] X(i+1)-X(i-1)	[3] Y(i)	[4] Y(i+1)-Y(i-1)	[2]*[3]	[1]*[4]	方向角	夾角	距離
W168-31	-97418.509	17.419	-3216.452	15.159	-56028.920942	-1476745.242324	341-02-20	90-16-56	11.450
W168-67	-97407.680	4.207	-3220.173	-22.590	-13546.509263	2200464.969191	250-39-43	89-37-23	19.998
W168-68	-97414.302	-17.419	-3239.042	-15.159	56422.431539	1476681.472921	161-01-56	90-22-13	11.417
W168-63	-97425.100	-4.207	-3235.331	22.590	13610.278666	-2200858.479788	70-45-24	89-43-28	19.997
合計				倍面積	457.280000	-457.280000			62.862
				面積	228.6400002	228.6400002			

面積（座標法）計算書

地番：W168-4-3

測点名	[1] X(i)	[2] X(i+1)-X(i-1)	[3] Y(i)	[4] Y(i+1)-Y(i-1)	[2]*[3]	[1]*[4]	方向角	夾角	距離
W168-66	-97412.529	6.066	-3239.652	-23.231	-19651.080759	2262969.285430	251-01-09	89-59-13	19.998
W168-65	-97419.034	-18.987	-3258.562	-14.619	61871.130583	1424126.934426	161-01-33	90-00-24	13.200
W168-30	-97431.517	-6.066	-3254.270	23.231	19739.754086	-2263410.374080	71-16-55	90-15-22	19.997
W168-63	-97425.100	18.987	-3235.331	14.619	-61430.041932	-1424215.607753	341-01-56	89-45-01	13.292
合計				倍面積	529.761978	-529.761978			66.487
				面積	264.8809890	264.8809890			

面積（座標法）計算書

地番：W168-4-4

測点名	[1] X(i)	[2] X(i+1)-X(i-1)	[3] Y(i)	[4] Y(i+1)-Y(i-1)	[2]*[3]	[1]*[4]	方向角	夾角	距離
W168-49	-97400.171	5.972	-3243.899	-23.200	-19371.597354	2259685.711659	251-22-36	90-20-40	20.000
W168-29	-97406.558	-18.863	-3262.852	-14.663	61546.882513	1428260.844732	161-01-33	89-38-57	13.193
W168-65	-97419.034	-5.972	-3258.562	23.200	19459.159704	-2260123.331543	71-01-09	89-59-36	19.998
W168-66	-97412.529	18.863	-3239.652	14.663	-61109.262629	-1428348.407082	341-01-56	90-00-47	13.068
合計				倍面積	525.182233	-525.182233			66.259
				面積	262.5911167	262.5911167			

面積（座標法）計算書

地 番： W168-5

測点名	[1] X(i)	[2] X(i+1)-X(i-1)	[3] Y(i)	[4] Y(i+1)-Y(i-1)	[2]*[3]	[1]*[4]	方向角	夾 角	距 離
W168-30	-97431.517	-16.640	-3254.270	-15.424	54151.683078	1502778.996229	161-01-33	89-44-38	10.810
W168-5	-97441.740	-11.539	-3250.755	6.211	37511.088082	-605173.198449	116-01-21	134-59-48	3.000
W168-6	-97443.056	10.311	-3248.060	36.499	-33490.502855	-3556611.598874	71-01-08	134-59-47	35.747
W168-7	-97431.429	14.323	-3214.256	35.120	-46037.084386	-3421812.122411	26-01-44	135-00-36	3.000
W168-8	-97428.733	12.920	-3212.939	-2.196	-41510.428927	213968.084171	341-02-20	135-00-36	10.811
W168-31	-97418.509	3.633	-3216.452	-22.392	-11686.944210	2181389.077468	250-45-24	89-43-04	19.997
W168-63	-97425.100	-13.008	-3235.331	-37.818	42083.830714	3684439.120369	251-16-55	180-31-31	19.997
合計				倍面積 面積	1021.641495 510.8207476	-1021.641495 510.8207476			103.362

面積（座標法）計算書

地番：W168-6

測点名	[1] X(i)	[2] X(i+1)-X(i-1)	[3] Y(i)	[4] Y(i+1)-Y(i-1)	[2]*[3]	[1]*[4]	方向角	夾角	距離
W168-42	-97363.010	13.820	-3254.587	18.486	-44979.635812	-1799833.258979	341-01-33	90-00-00	7.059
W168-41	-97356.335	-0.470	-3256.882	-23.076	1529.237963	2246606.579009	251-01-33	90-00-00	21.975
W168-25	-97363.480	-13.820	-3277.663	-18.486	45298.556647	1799841.938812	161-01-33	90-00-00	7.059
W168-26	-97370.155	0.470	-3275.368	23.076	-1537.917796	-2246925.499845	71-01-33	90-00-00	21.975
合計				倍面積	310.241003	-310.241003			58.068
				面積	155.1205015	155.1205015			

面積（座標法）計算書

地番：W168-7

測点名	[1] X(i)	[2] X(i+1)-X(i-1)	[3] Y(i)	[4] Y(i+1)-Y(i-1)	[2]*[3]	[1]*[4]	方向角	夾角	距離
W168-41	-97356.335	14.627	-3256.882	18.208	-47639.279104	-1772700.816257	341-01-33	90-00-00	7.912
W168-39	-97348.852	0.337	-3259.455	-23.354	-1099.553182	2273440.882878	251-01-33	90-00-00	21.975
W168-24	-97355.997	-14.627	-3280.235	-18.208	47980.877638	1772694.673794	161-01-33	90-00-00	7.912
W168-25	-97363.480	-0.337	-3277.663	23.354	1105.695644	-2273782.481412	71-01-33	90-00-00	21.975
合計				倍面積	347.740996	-347.740996			59.774
				面積	173.8704982	173.8704982			

面積（座標法）計算書

地番：W168-8

測点名	[1] X(i)	[2] X(i+1)-X(i-1)	[3] Y(i)	[4] Y(i+1)-Y(i-1)	[2]*[3]	[1]*[4]	方向角	夾角	距離
W168-39	-97348.852	12.861	-3259.455	18.816	-41920.394929	-1831677.135368	341-01-33	90-00-00	6.045
W168-38	-97343.136	-1.429	-3261.420	-22.746	4659.768891	2214198.300462	251-01-33	90-00-00	21.975
W168-23	-97350.281	-12.861	-3282.201	-18.816	42212.939216	1831704.018246	161-01-33	90-00-00	6.045
W168-24	-97355.997	1.429	-3280.235	22.746	-4686.651769	-2214490.844749	71-01-33	90-00-00	21.975
合計				倍面積	265.661409	-265.661409			56.040
				面積	132.8307047	132.8307047			

面積（座標法）計算書

地番：W168-9-1

測点名	[1] X(i)	[2] X(i+1)-X(i-1)	[3] Y(i)	[4] Y(i+1)-Y(i-1)	[2]*[3]	[1]*[4]	方向角	夾角	距離
W168-75	-97347.813	-9.613	-3283.050	-19.932	31561.214547	1940362.144846	161-01-33	90-00-00	2.610
W168-23	-97350.281	4.677	-3282.201	21.630	-15349.343323	-2105653.503965	71-01-33	90-00-00	21.975
W168-38	-97343.136	9.613	-3261.420	19.932	-31353.280326	-1940268.930825	341-01-33	90-00-00	2.610
W168-74	-97340.668	-4.677	-3262.269	-21.630	15256.129302	2105445.569744	251-01-33	90-00-00	21.975
合計				倍面積	114.720200	-114.720200			49.170
				面積	57.3601000	57.3601000			

面積（座標法）計算書

地番：W168-9-2

測点名	[1] X(i)	[2] X(i+1)-X(i-1)	[3] Y(i)	[4] Y(i+1)-Y(i-1)	[2]*[3]	[1]*[4]	方向角	夾角	距離
W168-37	-97338.396	-4.873	-3263.050	-21.562	15900.090658	2098829.172008	251-01-33	90-00-00	21.975
W168-22	-97345.541	-9.417	-3283.831	-20.000	30924.339072	1946884.587974	161-01-33	90-00-00	2.403
W168-75	-97347.813	4.873	-3283.050	21.562	-15997.544742	-2099032.226485	71-01-33	90-00-00	21.975
W168-74	-97340.668	9.417	-3262.269	20.000	-30721.284596	-1946787.133889	341-01-33	90-00-00	2.403
合計				倍面積	105.600392	-105.600392			48.756
				面積	52.8001962	52.8001962			

面積（座標法）計算書

地 番： W168-10

測点名	[1] X(i)	[2] X(i+1)-X(i-1)	[3] Y(i)	[4] Y(i+1)-Y(i-1)	[2]*[3]	[1]*[4]	方向角	夾 角	距 離
W168-37	-97338.396	14.847	-3263.050	18.133	-48447.024626	-1765014.943443	341-01-33	90-00-00	8.145
W168-21	-97330.693	11.965	-3265.698	-22.753	-39072.648575	2214566.667825	281-58-12	120-56-39	20.552
W168-3	-97326.431	0.514	-3285.803	-23.414	-1687.818327	2278817.708145	221-26-17	119-28-05	5.000
W168-4	-97330.180	-19.110	-3289.112	1.972	62853.369576	-191940.282602	161-01-33	119-35-16	16.243
W168-22	-97345.541	-8.216	-3283.831	26.062	26979.522954	-2537054.550927	71-01-33	90-00-00	21.975
合計				倍面積	625.401002	-625.401002			71.915
				面 積	312.7005010	312.7005010			

面積（座標法）計算書

地番：W168-11-1

測点名	[1] X(i)	[2] X(i+1)-X(i-1)	[3] Y(i)	[4] Y(i+1)-Y(i-1)	[2]*[3]	[1]*[4]	方向角	夾角	距離
W168-27	-97381.266	-18.207	-3271.547	-16.978	59565.303433	1653296.157208	161-01-33	90-00-00	11.698
W168-28	-97392.329	-4.016	-3267.744	24.618	13122.549766	-2397631.243581	71-17-52	90-16-19	21.975
W168-46	-97385.282	18.207	-3246.929	16.978	-59117.076672	-1653364.335394	341-01-33	89-43-41	11.802
W168-44	-97374.121	4.016	-3250.766	-24.618	-13054.371580	2397183.016819	251-01-33	90-00-00	21.975
合計				倍面積	516.404947	-516.404947			67.450
				面積	258.2024739	258.2024739			

面積（座標法）計算書

地番：W168-11-2

測点名	[1] X(i)	[2] X(i+1)-X(i-1)	[3] Y(i)	[4] Y(i+1)-Y(i-1)	[2]*[3]	[1]*[4]	方向角	夾角	距離
W168-44	-97374.121	18.256	-3250.766	16.961	-59346.983053	-1651526.601446	341-01-33	90-00-00	11.750
W168-42	-97363.010	3.966	-3254.587	-24.601	-12908.932051	2395255.734770	251-01-33	90-00-00	21.975
W168-26	-97370.155	-18.256	-3275.368	-16.961	59796.111721	1651459.329114	161-01-33	90-00-00	11.750
W168-27	-97381.266	-3.966	-3271.547	24.601	12976.204383	-2395704.863438	71-01-33	90-00-00	21.975
合計				倍面積	516.400999	-516.400999			67.450
				面積	258.2004998	258.2004998			