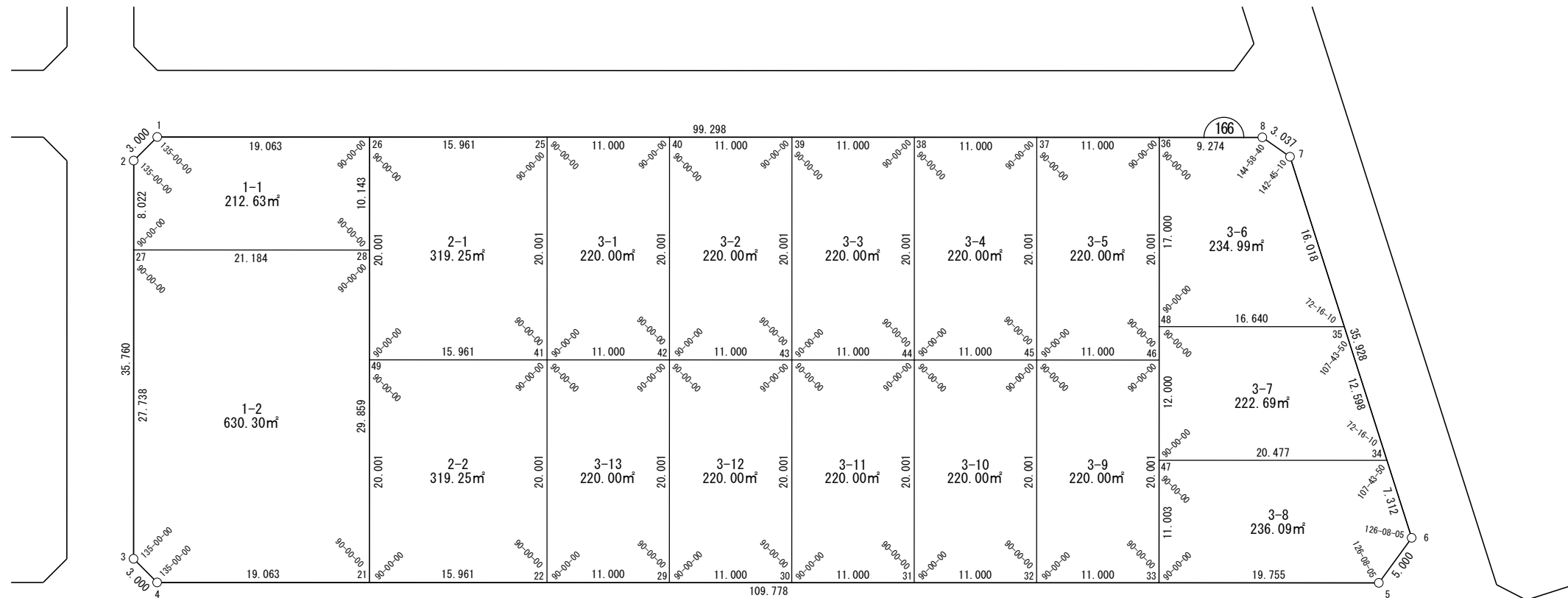


地番名	地積
W166-1-1	212.63 m ²
W166-1-2	630.30 m ²
W166-2-1	319.25 m ²
W166-2-2	319.25 m ²
W166-3-1	220.00 m ²
W166-3-2	220.00 m ²
W166-3-3	220.00 m ²
W166-3-4	220.00 m ²
W166-3-5	220.00 m ²
W166-3-6	234.99 m ²
W166-3-7	222.69 m ²
W166-3-8	236.09 m ²
W166-3-9	220.00 m ²
W166-3-10	220.00 m ²
W166-3-11	220.00 m ²
W166-3-12	220.00 m ²
W166-3-13	220.00 m ²
合計	4375.20 m ²



测 点 名	X 座 標	Y 座 標
W166-1	-97438.413	-3209.595
W166-2	-97437.098	-3212.290
W166-3	-97448.729	-3246.106
W166-4	-97451.425	-3247.422
W166-5	-97555.234	-3211.716
W166-6	-97556.709	-3206.939
W166-7	-97535.231	-3178.137
W166-8	-97532.312	-3177.298
W166-21	-97469.451	-3241.222
W166-22	-97484.545	-3236.030
W166-25	-97471.534	-3198.203
W166-26	-97456.440	-3203.394
W166-27	-97439.707	-3219.876
W166-28	-97459.739	-3212.986

測 點 名	X 座 標	Y 座 標
W166-29	-97494. 947	-3232. 453
W166-30	-97505. 348	-3228. 875
W166-31	-97515. 750	-3225. 297
W166-32	-97526. 151	-3221. 720
W166-33	-97536. 553	-3218. 142
W166-34	-97552. 338	-3201. 077
W166-35	-97544. 806	-3190. 978
W166-36	-97523. 542	-3180. 314
W166-37	-97513. 140	-3183. 892
W166-38	-97502. 739	-3187. 470
W166-39	-97492. 337	-3191. 047
W166-40	-97481. 935	-3194. 625
W166-41	-97478. 039	-3217. 117
W166-42	-97488. 441	-3213. 539

測 點 名	X 座 標	Y 座 標
W166-43	-97498.843	-3209.961
W166-44	-97509.244	-3206.383
W166-45	-97519.646	-3202.806
W166-46	-97530.048	-3199.228
W166-47	-97532.974	-3207.737
W166-48	-97529.071	-3196.390
W166-49	-97462.946	-3222.308

面積（座標法）計算書

地 番： W166-1-1

測点名	[1] X(i)	[2] X(i+1)-X(i-1)	[3] Y(i)	[4] Y(i+1)-Y(i-1)	[2]*[3]	[1]*[4]	方向角	夾 角	距 離
W166-28	-97459.739	-16.733	-3212.986	16.482	53763.816898	-1606341.102722	71-01-08	90-00-00	10.143
W166-26	-97456.440	21.326	-3203.394	3.391	-68315.399062	-330511.851559	341-01-08	90-00-00	19.063
W166-1	-97438.413	19.343	-3209.595	-8.896	-62081.863035	866808.784084	296-01-08	135-00-00	3.000
W166-2	-97437.098	-1.293	-3212.290	-10.282	4155.066879	1001816.288513	251-01-08	135-00-00	8.022
W166-27	-97439.707	-22.642	-3219.876	-0.696	72903.638921	67802.621082	161-01-08	90-00-00	21.184
合計				倍面積	425.260601	-425.260601			61.412
				面 積	212.6303009	212.6303009			

面積（座標法）計算書

地番：W166-1-2

測点名	[1] X(i)	[2] X(i+1)-X(i-1)	[3] Y(i)	[4] Y(i+1)-Y(i-1)	[2]*[3]	[1]*[4]	方向角	夾角	距離
W166-27	-97439.707	11.011	-3219.876	-33.120	-35452.508456	3227218.382795	251-01-08	90-00-00	27.738
W166-3	-97448.729	-11.718	-3246.106	-27.546	38037.393519	2684309.091969	206-01-08	135-00-00	3.000
W166-4	-97451.425	-20.722	-3247.422	4.884	67294.425559	-475985.327048	161-01-08	135-00-00	19.063
W166-21	-97469.451	-8.315	-3241.222	34.436	26949.459573	-3356472.869760	71-01-08	90-00-00	29.859
W166-28	-97459.739	29.744	-3212.986	21.346	-95568.169049	-2080329.879101	341-01-08	90-00-00	21.184
合計				倍面積	1260.601145	-1260.601145			100.844
				面積	630.3005727	630.3005727			

面積（座標法）計算書

地番：W166-2-1

測点名	[1] X(i)	[2] X(i+1)-X(i-1)	[3] Y(i)	[4] Y(i+1)-Y(i-1)	[2]*[3]	[1]*[4]	方向角	夾角	距離
W166-41	-97478.039	-8.588	-3217.117	24.105	27628.695784	-2349741.600543	71-01-08	90-00-00	20.001
W166-25	-97471.534	21.599	-3198.203	13.722	-69078.268479	-1337532.352172	341-01-08	90-00-00	15.961
W166-26	-97456.440	8.588	-3203.394	-24.105	-27510.848362	2349220.947064	251-01-08	90-00-00	20.001
W166-49	-97462.946	-21.599	-3222.308	-13.722	69598.921958	1337414.504749	161-01-08	90-00-00	15.961
合計				倍面積	638.500901	-638.500901			71.924
				面積	319.2504505	319.2504505			

面積（座標法）計算書

地番：W166-2-2

測点名	[1] X(i)	[2] X(i+1)-X(i-1)	[3] Y(i)	[4] Y(i+1)-Y(i-1)	[2]*[3]	[1]*[4]	方向角	夾角	距離
W166-49	-97462.946	8.588	-3222.308	-24.105	-27673.280613	2349377.766268	251-01-08	90-00-00	20.001
W166-21	-97469.451	-21.599	-3241.222	-13.722	70007.443005	1337503.776673	161-01-08	90-00-00	15.961
W166-22	-97484.545	-8.588	-3236.030	24.105	27791.128034	-2349898.419747	71-01-08	90-00-00	20.001
W166-41	-97478.039	21.599	-3217.117	13.722	-69486.789526	-1337621.624095	341-01-08	90-00-00	15.961
合計				倍面積	638.500899	-638.500899			71.924
				面積	319.2504498	319.2504498			

面積（座標法）計算書

地 番： W166-3-1

測点名	[1] X(i)	[2] X(i+1)-X(i-1)	[3] Y(i)	[4] Y(i+1)-Y(i-1)	[2]*[3]	[1]*[4]	方向角	夾 角	距 離
W166-42	-97488.441	-3.896	-3213.539	22.492	12520.286107	-2192663.715918	71-01-08	90-00-00	20.001
W166-40	-97481.935	16.907	-3194.625	15.336	-54012.051076	-1494993.209266	341-01-08	90-00-00	11.000
W166-25	-97471.534	3.896	-3198.203	-22.492	-12460.535025	2192283.448000	251-01-08	90-00-00	20.001
W166-41	-97478.039	-16.907	-3217.117	-15.336	54392.318994	1494933.458183	161-01-08	90-00-00	11.000
合計				倍面積	440.019000	-440.019000			62.002
				面 積	220.0095001	220.0095001			

面積（座標法）計算書

地番：W166-3-2

測点名	[1] X(i)	[2] X(i+1)-X(i-1)	[3] Y(i)	[4] Y(i+1)-Y(i-1)	[2]*[3]	[1]*[4]	方向角	夾角	距離
W166-42	-97488.441	-16.907	-3213.539	-15.336	54331.830057	1495092.978206	161-01-08	90-00-00	11.000
W166-43	-97498.843	-3.896	-3209.961	22.492	12506.346979	-2192897.664008	71-01-08	90-00-00	20.001
W166-39	-97492.337	16.907	-3191.047	15.336	-53951.562139	-1495152.729288	341-01-08	90-00-00	11.000
W166-40	-97481.935	3.896	-3194.625	-22.492	-12446.595896	2192517.396090	251-01-08	90-00-00	20.001
合計				倍面積	440.019000	-440.019000			62.002
				面積	220.0095001	220.0095001			

面積（座標法）計算書

地番：W166-3-3

測点名	[1] X(i)	[2] X(i+1)-X(i-1)	[3] Y(i)	[4] Y(i+1)-Y(i-1)	[2]*[3]	[1]*[4]	方向角	夾角	距離
W166-43	-97498.843	-16.907	-3209.961	-15.336	54271.341119	1495252.498238	161-01-08	90-00-00	11.000
W166-44	-97509.244	-3.896	-3206.383	22.492	12492.407849	-2193131.612097	71-01-08	90-00-00	20.001
W166-38	-97502.739	16.907	-3187.470	15.336	-53891.073201	-1495312.249320	341-01-08	90-00-00	11.000
W166-39	-97492.337	3.896	-3191.047	-22.492	-12432.656766	2192751.344180	251-01-08	90-00-00	20.001
合計				倍面積	440.018999	-440.018999			62.002
				面積	220.0095000	220.0095000			

面積（座標法）計算書

地番：W166-3-4

測点名	[1] X(i)	[2] X(i+1)-X(i-1)	[3] Y(i)	[4] Y(i+1)-Y(i-1)	[2]*[3]	[1]*[4]	方向角	夾角	距離
W166-44	-97509.244	-16.907	-3206.383	-15.336	54210.852181	1495412.018260	161-01-08	90-00-00	11.000
W166-45	-97519.646	-3.896	-3202.806	22.492	12478.468720	-2193365.560186	71-01-08	90-00-00	20.001
W166-37	-97513.140	16.907	-3183.892	15.336	-53830.584264	-1495471.769343	341-01-08	90-00-00	11.000
W166-38	-97502.739	3.896	-3187.470	-22.492	-12418.717637	2192985.292269	251-01-08	90-00-00	20.001
合計				倍面積	440.018999	-440.018999			62.002
				面積	220.0094999	220.0094999			

面積（座標法）計算書

地 番： W166-3-5

測点名	[1] X(i)	[2] X(i+1)-X(i-1)	[3] Y(i)	[4] Y(i+1)-Y(i-1)	[2]*[3]	[1]*[4]	方向角	夾 角	距 離
W166-45	-97519.646	-16.907	-3202.806	-15.336	54150.363243	1495571.538282	161-01-08	90-00-00	11.000
W166-46	-97530.048	-3.896	-3199.228	22.492	12464.529591	-2193599.508295	71-01-08	90-00-00	20.001
W166-36	-97523.542	16.907	-3180.314	15.336	-53770.095326	-1495631.289365	341-01-08	90-00-00	11.000
W166-37	-97513.140	3.896	-3183.892	-22.492	-12404.778508	2193219.240378	251-01-08	90-00-00	20.001
合計				倍面積	440.018999	-440.018999			62.002
				面 積	220.0094999	220.0094999			

面積（座標法）計算書

地 番： W166-3-6

測点名	[1] X(i)	[2] X(i+1)-X(i-1)	[3] Y(i)	[4] Y(i+1)-Y(i-1)	[2]*[3]	[1]*[4]	方向角	夾 角	距 離
W166-48	-97529.071	-21.264	-3196.390	-10.663	67969.395936	1039997.445056	161-01-08	90-00-00	16.640
W166-35	-97544.806	-6.160	-3190.978	18.253	19655.841294	-1780476.590833	53-17-18	72-16-10	16.018
W166-7	-97535.231	12.494	-3178.137	13.680	-39708.591054	-1334282.299404	16-02-28	142-45-10	3.037
W166-8	-97532.312	11.689	-3177.298	-2.177	-37139.885403	212353.084259	341-01-08	144-58-40	9.274
W166-36	-97523.542	3.241	-3180.314	-19.092	-10306.772173	1861938.372320	251-01-08	90-00-00	17.000
合計				倍面積	469.988599	-469.988599			61.969
				面 積	234.9942998	234.9942998			

面積（座標法）計算書

地番：W166-3-7

測点名	[1] X(i)	[2] X(i+1)-X(i-1)	[3] Y(i)	[4] Y(i+1)-Y(i-1)	[2]*[3]	[1]*[4]	方向角	夾角	距離
W166-47	-97532.974	-23.266	-3207.737	-4.687	74632.273195	457175.465813	161-01-08	90-00-00	20.477
W166-34	-97552.338	-11.832	-3201.077	16.760	37875.301879	-1634948.796912	53-17-18	72-16-10	12.598
W166-35	-97544.806	23.266	-3190.978	4.687	-74242.336286	-457230.927286	341-01-08	107-43-50	16.640
W166-48	-97529.071	11.832	-3196.390	-16.760	-37819.840406	1634558.860002	251-01-08	90-00-00	12.000
合計				倍面積	445.398382	-445.398382			61.715
				面積	222.6991911	222.6991911			

面積（座標法）計算書

地 番： W166-3-8

測点名	[1] X(i)	[2] X(i+1)-X(i-1)	[3] Y(i)	[4] Y(i+1)-Y(i-1)	[2]*[3]	[1]*[4]	方向角	夾 角	距 離
W166-33	-97536.553	-22.260	-3218.142	-3.979	71635.230191	388094.440881	161-01-08	90-00-00	19.755
W166-5	-97555.234	-20.156	-3211.716	11.203	64734.434410	-1092891.169261	107-09-13	126-08-05	5.000
W166-6	-97556.709	2.897	-3206.939	10.639	-9289.011385	-1037914.491742	53-17-18	126-08-05	7.312
W166-34	-97552.338	23.734	-3201.077	-0.798	-75975.632356	77879.311000	341-01-08	107-43-50	20.477
W166-47	-97532.974	15.785	-3207.737	-17.065	-50632.834240	1664359.722502	251-01-08	90-00-00	11.003
合計				倍面積	472.186618	-472.186618			63.547
				面 積	236.0933095	236.0933095			

面積（座標法）計算書

地 番： W166-3-9

測点名	[1] X(i)	[2] X(i+1)-X(i-1)	[3] Y(i)	[4] Y(i+1)-Y(i-1)	[2]*[3]	[1]*[4]	方向角	夾 角	距 離
W166-32	-97526.151	-16.907	-3221.720	-15.336	54470.142238	1495671.308577	161-01-08	90-00-00	11.000
W166-33	-97536.553	-3.896	-3218.142	22.492	12538.219794	-2193745.828913	71-01-08	90-00-00	20.001
W166-46	-97530.048	16.907	-3199.228	15.336	-54089.874320	-1495731.059660	341-01-08	90-00-00	11.000
W166-45	-97519.646	3.896	-3202.806	-22.492	-12478.468711	2193365.560996	251-01-08	90-00-00	20.001
合計				倍面積	440.019000	-440.019000			62.002
				面 積	220.0095000	220.0095000			

面積（座標法）計算書

地番：W166-3-10

測点名	[1] X(i)	[2] X(i+1)-X(i-1)	[3] Y(i)	[4] Y(i+1)-Y(i-1)	[2]*[3]	[1]*[4]	方向角	夾角	距離
W166-31	-97515.750	-16.907	-3225.297	-15.336	54530.631170	1495511.788009	161-01-08	90-00-00	11.000
W166-32	-97526.151	-3.896	-3221.720	22.492	12552.158929	-2193511.880278	71-01-08	90-00-00	20.001
W166-45	-97519.646	16.907	-3202.806	15.336	-54150.363252	-1495571.539092	341-01-08	90-00-00	11.000
W166-44	-97509.244	3.896	-3206.383	-22.492	-12492.407846	2193131.612360	251-01-08	90-00-00	20.001
合計				倍面積	440.019000	-440.019000			62.002
				面積	220.0095000	220.0095000			

面積（座標法）計算書

地 番： W166-3-11

測点名	[1] X(i)	[2] X(i+1)-X(i-1)	[3] Y(i)	[4] Y(i+1)-Y(i-1)	[2]*[3]	[1]*[4]	方向角	夾 角	距 離
W166-30	-97505.348	-16.907	-3228.875	-15.336	54591.120101	1495352.267441	161-01-08	90-00-00	11.000
W166-31	-97515.750	-3.896	-3225.297	22.492	12566.098064	-2193277.931642	71-01-08	90-00-00	20.001
W166-44	-97509.244	16.907	-3206.383	15.336	-54210.852184	-1495412.018523	341-01-08	90-00-00	11.000
W166-43	-97498.843	3.896	-3209.961	-22.492	-12506.346981	2192897.663725	251-01-08	90-00-00	20.001
合計				倍面積	440.018999	-440.018999			62.002
				面 積	220.0095000	220.0095000			

面積（座標法）計算書

地番：W166-3-12

測点名	[1] X(i)	[2] X(i+1)-X(i-1)	[3] Y(i)	[4] Y(i+1)-Y(i-1)	[2]*[3]	[1]*[4]	方向角	夾角	距離
W166-29	-97494.947	-16.907	-3232.453	-15.336	54651.609033	1495192.746873	161-01-08	90-00-00	11.000
W166-30	-97505.348	-3.896	-3228.875	22.492	12580.037200	-2193043.983007	71-01-08	90-00-00	20.001
W166-43	-97498.843	16.907	-3209.961	15.336	-54271.341116	-1495252.497955	341-01-08	90-00-00	11.000
W166-42	-97488.441	3.896	-3213.539	-22.492	-12520.286117	2192663.715090	251-01-08	90-00-00	20.001
合計				倍面積	440.019000	-440.019000			62.002
				面積	220.0095000	220.0095000			

面積（座標法）計算書

地番：W166-3-13

測点名	[1] X(i)	[2] X(i+1)-X(i-1)	[3] Y(i)	[4] Y(i+1)-Y(i-1)	[2]*[3]	[1]*[4]	方向角	夾角	距離
W166-42	-97488.441	16.907	-3213.539	15.336	-54331.830047	-1495092.977377	341-01-08	90-00-00	11.000
W166-41	-97478.039	3.896	-3217.117	-22.492	-12534.225252	2192429.766454	251-01-08	90-00-00	20.001
W166-22	-97484.545	-16.907	-3236.030	-15.336	54712.097964	1495033.226295	161-01-08	90-00-00	11.000
W166-29	-97494.947	-3.896	-3232.453	22.492	12593.976334	-2192810.034372	71-01-08	90-00-00	20.001
合計				倍面積	440.018999	-440.018999			62.002
				面積	220.0095000	220.0095000			