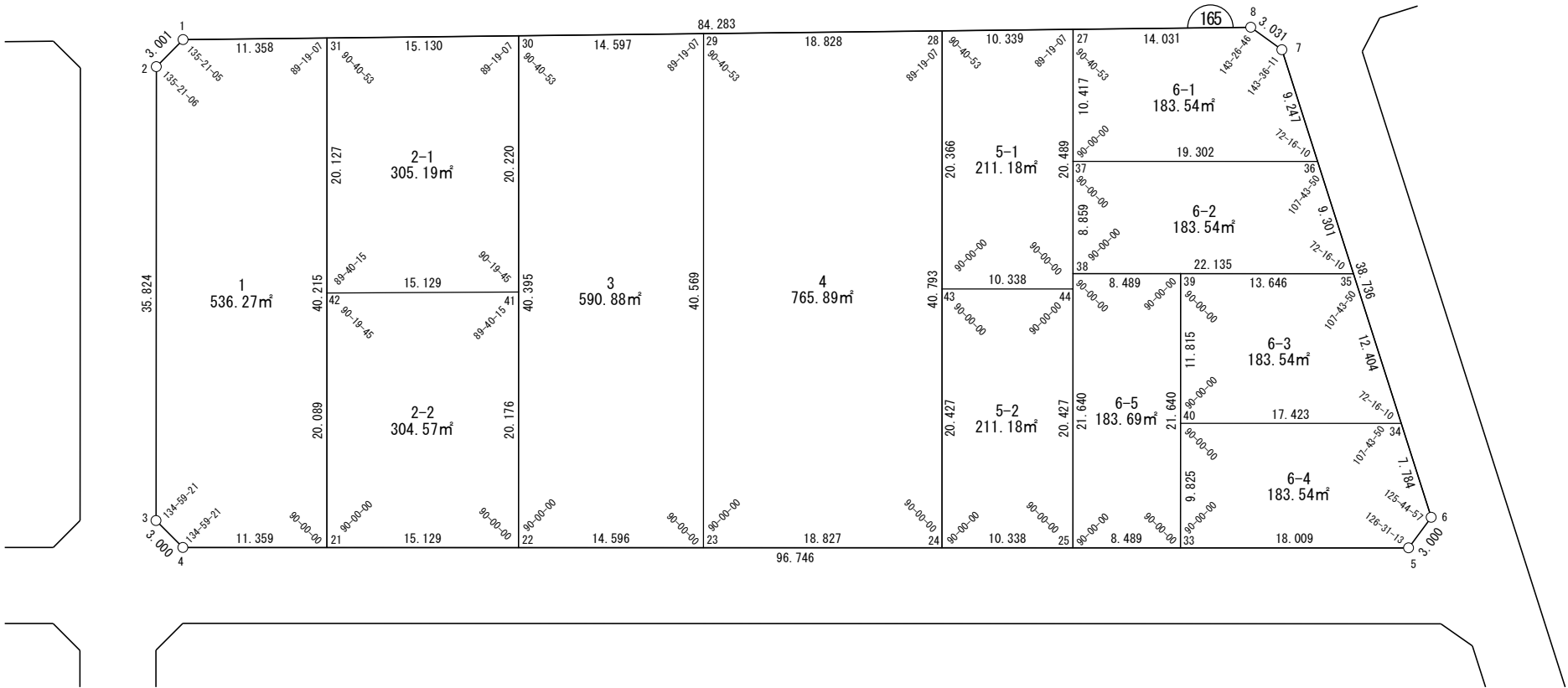


面積一覧表

地番名	地積
W165-1	536.27㎡
W165-2-1	305.19㎡
W165-2-2	304.57㎡
W165-3	590.88㎡
W165-4	765.89㎡
W165-5-1	211.18㎡
W165-5-2	211.18㎡
W165-6-1	183.54㎡
W165-6-2	183.54㎡
W165-6-3	183.54㎡
W165-6-4	183.54㎡
W165-6-5	183.69㎡
合計	3843.01㎡



世界測地系



座 標 一 覧 表

測 点 名	X 座 標	Y 座 標
W165-1	-97423.438	-3166.032
W165-2	-97422.137	-3168.736
W165-3	-97433.776	-3202.616
W165-4	-97436.472	-3203.933
W165-5	-97527.958	-3172.466
W165-6	-97528.862	-3169.606
W165-7	-97505.706	-3138.553
W165-8	-97502.806	-3137.672
W165-21	-97447.214	-3200.239
W165-22	-97461.519	-3195.318
W165-23	-97475.322	-3190.571
W165-24	-97493.125	-3184.447
W165-25	-97502.901	-3181.085
W165-27	-97489.593	-3142.393
W165-28	-97479.857	-3145.872

測 点 名	X 座 標	Y 座 標
W165-29	-97462.127	-3152.207
W165-30	-97448.381	-3157.119
W165-31	-97434.133	-3162.210
W165-33	-97510.929	-3178.324
W165-34	-97524.209	-3163.366
W165-35	-97516.794	-3153.422
W165-36	-97511.234	-3145.966
W165-37	-97492.981	-3152.244
W165-38	-97495.863	-3160.621
W165-39	-97503.890	-3157.860
W165-40	-97507.733	-3169.033
W165-41	-97454.957	-3176.239
W165-42	-97440.680	-3181.242
W165-43	-97486.481	-3165.131
W165-44	-97496.257	-3161.768

株式会社
オオバ
名古屋支店

豊田浄水特定土地区画整理組合

面積（座標法）計算書

地番：W165-1

測点名	[1] X(i)	[2] X(i+1)-X(i-1)	[3] Y(i)	[4] Y(i+1)-Y(i-1)	[2]*[3]	[1]*[4]	方向角	夾角	距離
W165-31	-97434.133	23.776	-3162.210	34.207	-75183.295201	-3332943.271527	340-20-15	89-19-07	11.358
W165-1	-97423.438	11.996	-3166.032	-6.526	-37980.119629	635768.998706	295-41-20	135-21-05	3.001
W165-2	-97422.137	-10.338	-3168.736	-36.585	32759.915712	3564178.794560	251-02-26	135-21-06	35.824
W165-3	-97433.776	-14.335	-3202.616	-35.197	45910.625056	3429411.949014	206-01-47	134-59-21	3.000
W165-4	-97436.472	-13.437	-3203.933	2.378	43051.484302	-231679.962221	161-01-08	134-59-21	11.359
W165-21	-97447.214	2.339	-3200.239	41.723	-7486.066237	-4065809.052534	71-01-08	90-00-00	40.215
合計				倍面積	1072.544002	-1072.544002			104.757
				面積	536.2720010	536.2720010			

面積（座標法）計算書

地番：W165-2-1

測点名	[1] X(i)	[2] X(i+1)-X(i-1)	[3] Y(i)	[4] Y(i+1)-Y(i-1)	[2]*[3]	[1]*[4]	方向角	夾角	距離
W165-31	-97434.133	7.701	-3162.210	-24.123	-24352.611374	2350413.438776	251-01-08	90-40-53	20.127
W165-42	-97440.680	-20.824	-3181.242	-14.029	66246.028547	1367037.779989	160-41-23	89-40-15	15.129
W165-41	-97454.957	-7.701	-3176.239	24.123	24460.653979	-2350915.777021	71-01-08	90-19-45	20.220
W165-30	-97448.381	20.824	-3157.119	14.029	-65743.690302	-1367145.822595	340-20-15	89-19-07	15.130
合計				倍面積	610.380850	-610.380850			70.606
				面積	305.1904253	305.1904253			

面積（座標法）計算書

地番：W165-2-2

測点名	[1] X(i)	[2] X(i+1)-X(i-1)	[3] Y(i)	[4] Y(i+1)-Y(i-1)	[2]*[3]	[1]*[4]	方向角	夾角	距離
W165-42	-97440.680	7.744	-3181.242	-23.999	-24634.627510	2338509.715691	251-01-08	90-19-45	20.089
W165-21	-97447.214	-20.840	-3200.239	-14.076	66692.707087	1371652.973254	161-01-08	90-00-00	15.129
W165-22	-97461.519	-7.744	-3195.318	23.999	24743.626904	-2339009.859442	71-01-08	90-00-00	20.176
W165-41	-97454.957	20.840	-3176.239	14.076	-66192.563337	-1371761.972648	340-41-23	89-40-15	15.129
合計				倍面積	609.143144	-609.143144			70.523
				面積	304.5715724	304.5715724			

面積（座標法）計算書

地番：W165-3

測点名	[1] X(i)	[2] X(i+1)-X(i-1)	[3] Y(i)	[4] Y(i+1)-Y(i-1)	[2]*[3]	[1]*[4]	方向角	夾角	距離
W165-29	-97462.127	26.941	-3152.207	33.452	-84924.334233	-3260255.898709	340-20-15	89-19-07	14.597
W165-30	-97448.381	0.607	-3157.119	-43.111	-1916.953483	4201059.397914	251-01-08	90-40-53	40.395
W165-22	-97461.519	-26.941	-3195.318	-33.452	86085.786997	3260235.587470	161-01-08	90-00-00	14.596
W165-23	-97475.322	-0.607	-3190.571	43.111	1937.264722	-4202220.850678	71-01-08	90-00-00	40.569
合計				倍面積	1181.764002	-1181.764002			110.157
				面積	590.8820014	590.8820014			

面積（座標法）計算書

地番：W165-4

測点名	[1] X(i)	[2] X(i+1)-X(i-1)	[3] Y(i)	[4] Y(i+1)-Y(i-1)	[2]*[3]	[1]*[4]	方向角	夾角	距離
W165-28	-97479.857	30.998	-3145.872	32.240	-97516.813760	-3142720.103585	340-20-15	89-19-07	18.828
W165-29	-97462.127	4.535	-3152.207	-44.698	-14295.138897	4356407.680968	251-01-08	90-40-53	40.569
W165-23	-97475.322	-30.998	-3190.571	-32.240	98902.392024	3142573.897851	161-01-08	90-00-00	18.827
W165-24	-97493.125	-4.535	-3184.447	44.698	14441.344632	-4357793.259233	71-01-08	90-00-00	40.793
合計				倍面積	1531.783998	-1531.783998			119.017
				面積	765.8919994	765.8919994			

面積（座標法）計算書

地番：W165-5-1

測点名	[1] X(i)	[2] X(i+1)-X(i-1)	[3] Y(i)	[4] Y(i+1)-Y(i-1)	[2]*[3]	[1]*[4]	方向角	夾角	距離
W165-27	-97489.593	16.400	-3142.393	15.896	-51536.362758	-1549674.296344	340-20-15	89-19-07	10.339
W165-28	-97479.857	3.112	-3145.872	-22.737	-9790.693257	2216433.403030	251-01-08	90-40-53	20.366
W165-43	-97486.481	-16.400	-3165.131	-15.896	51909.263318	1549624.824905	161-01-08	90-00-00	10.338
W165-44	-97496.257	-3.112	-3161.768	22.737	9840.164696	-2216806.303590	71-01-08	90-00-00	20.489
合計				倍面積	422.371999	-422.371999			61.532
				面積	211.1859997	211.1859997			

面積（座標法）計算書

地番：W165-5-2

測点名	[1] X(i)	[2] X(i+1)-X(i-1)	[3] Y(i)	[4] Y(i+1)-Y(i-1)	[2]*[3]	[1]*[4]	方向角	夾角	距離
W165-43	-97486.481	3.132	-3165.131	-22.679	-9913.943178	2210914.529365	251-01-08	90-00-00	20.427
W165-24	-97493.125	-16.420	-3184.447	-15.954	52289.761520	1555400.311057	161-01-08	90-00-00	10.338
W165-25	-97502.901	-3.132	-3181.085	22.679	9963.914747	-2211286.929795	71-01-08	90-00-00	20.427
W165-44	-97496.257	16.420	-3161.768	15.954	-51917.361090	-1555450.282625	341-01-08	90-00-00	10.338
合計				倍面積	422.371999	-422.371999			61.530
				面積	211.1859996	211.1859996			

面積（座標法）計算書

地 番： W165-6-1

測点名	[1] X(i)	[2] X(i+1)-X(i-1)	[3] Y(i)	[4] Y(i+1)-Y(i-1)	[2]*[3]	[1]*[4]	方向角	夾 角	距 離
W165-36	-97511.234	-12.725	-3145.966	13.691	40031.263565	-1335060.885063	53-17-18	72-16-10	9.247
W165-7	-97505.706	8.428	-3138.553	8.294	-26451.632701	-808696.087656	16-53-29	143-36-11	3.031
W165-8	-97502.806	16.113	-3137.672	-3.841	-50556.894968	374468.419021	340-20-15	143-26-46	14.031
W165-27	-97489.593	9.825	-3142.393	-14.572	-30873.030080	1420613.869172	251-01-08	90-40-53	10.417
W165-37	-97492.981	-21.641	-3152.244	-3.573	68217.374385	348307.604326	161-01-08	90-00-00	19.302
合計				倍面積	367.080200	-367.080200			56.028
				面 積	183.5401000	183.5401000			

面積（座標法）計算書

地番：W165-6-2

測点名	[1] X(i)	[2] X(i+1)-X(i-1)	[3] Y(i)	[4] Y(i+1)-Y(i-1)	[2]*[3]	[1]*[4]	方向角	夾角	距離
W165-35	-97516.794	-15.371	-3153.422	14.655	48472.182542	-1429131.109874	53-17-18	72-16-10	9.301
W165-36	-97511.234	23.812	-3145.966	1.178	-74913.179692	-114841.276005	341-01-08	107-43-50	19.302
W165-37	-97492.981	15.371	-3152.244	-14.655	-48454.079404	1428782.132812	251-01-08	90-00-00	8.859
W165-38	-97495.863	-23.812	-3160.621	-1.178	75262.156754	114823.172866	161-01-08	90-00-00	22.135
合計				倍面積	367.080199	-367.080199			59.597
				面積	183.5401000	183.5401000			

面積（座標法）計算書

地番：W165-6-3

測点名	[1] X(i)	[2] X(i+1)-X(i-1)	[3] Y(i)	[4] Y(i+1)-Y(i-1)	[2]*[3]	[1]*[4]	方向角	夾角	距離
W165-34	-97524.209	-9.061	-3163.366	15.611	28663.330655	-1522435.050554	53-17-18	72-16-10	12.404
W165-35	-97516.794	20.319	-3153.422	5.505	-64074.124713	-536870.869445	341-01-08	107-43-50	13.646
W165-39	-97503.890	9.061	-3157.860	-15.611	-28613.445916	1522117.855093	251-01-08	90-00-00	11.815
W165-40	-97507.733	-20.319	-3169.033	-5.505	64391.320174	536820.984706	161-01-08	90-00-00	17.423
合計				倍面積	367.080199	-367.080199			55.288
				面積	183.5401000	183.5401000			

面積（座標法）計算書

地 番： W165-6-4

測点名	[1] X(i)	[2] X(i+1)-X(i-1)	[3] Y(i)	[4] Y(i+1)-Y(i-1)	[2]*[3]	[1]*[4]	方向角	夾 角	距 離
W165-40	-97507.733	13.280	-3169.033	-14.958	-42085.998054	1458520.983128	251-01-08	90-00-00	9.825
W165-33	-97510.929	-20.225	-3178.324	-3.433	64282.734248	334802.026200	161-01-08	90-00-00	18.009
W165-5	-97527.958	-17.934	-3172.466	8.718	56894.027808	-850229.367100	107-32-21	126-31-13	3.000
W165-6	-97528.862	3.749	-3169.606	9.101	-11883.750027	-887564.860033	53-17-18	125-44-57	7.784
W165-34	-97524.209	21.129	-3163.366	0.573	-66839.933774	-55895.862396	341-01-08	107-43-50	17.423
合計				倍面積	367.080200	-367.080200			56.041
				面 積	183.5401000	183.5401000			

面積（座標法）計算書

地番：W165-6-5

測点名	[1] X(i)	[2] X(i+1)-X(i-1)	[3] Y(i)	[4] Y(i+1)-Y(i-1)	[2]*[3]	[1]*[4]	方向角	夾角	距離
W165-39	-97503.890	15.066	-3157.860	17.702	-47575.546433	-1726053.419167	341-01-08	90-00-00	8.489
W165-38	-97495.863	0.989	-3160.621	-23.224	-3124.907520	2264286.813124	251-01-08	90-00-00	21.640
W165-25	-97502.901	-15.066	-3181.085	-17.702	47925.440155	1726035.916791	161-01-08	90-00-00	8.489
W165-33	-97510.929	-0.989	-3178.324	23.224	3142.409896	-2264636.706846	71-01-08	90-00-00	21.640
合計				倍面積	367.396098	-367.396098			60.258
				面積	183.6980491	183.6980491			