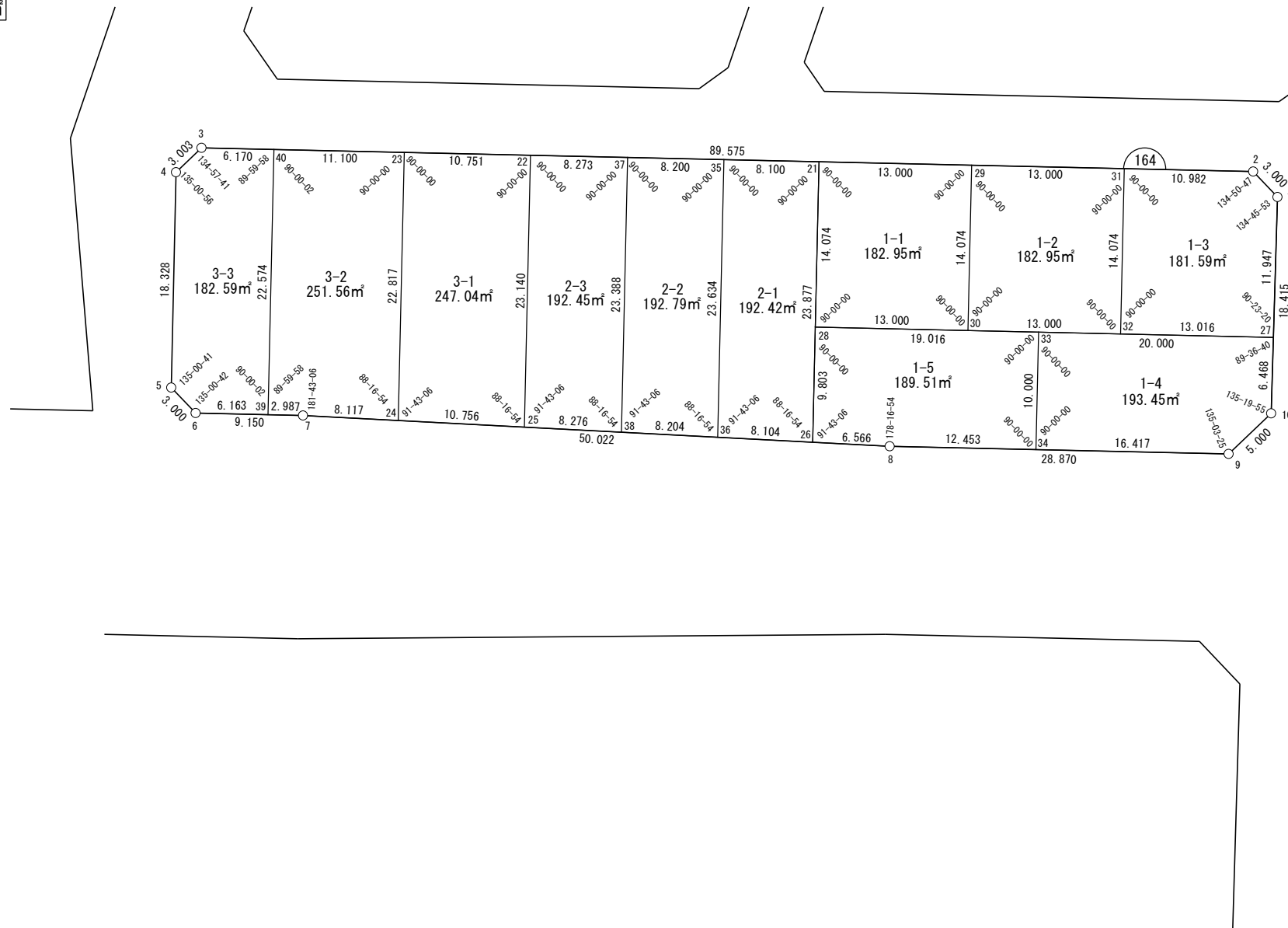




### 座 標 一 覽 表

測 點 名	X	座 標	Y	座 標
W164-1		-97512.184		-3133.653
W164-2		-97511.744		-3136.621
W164-3		-97565.291		-3208.429
W164-4		-97568.263		-3208.860
W164-5		-97582.951		-3197.898
W164-6		-97583.383		-3194.929
W164-7		-97577.913		-3187.594
W164-8		-97549.226		-3146.615
W164-9		-97531.968		-3123.471
W164-10		-97527.021		-3122.745
W164-21		-97533.851		-3166.267
W164-22		-97548.540		-3185.966
W164-23		-97554.967		-3194.585
W164-24		-97573.259		-3180.945
W164-25		-97567.090		-3172.133
W164-26		-97552.992		-3151.994
W164-27		-97521.810		-3126.577
W164-28		-97545.133		-3157.854
W164-29		-97526.080		-3155.846
W164-30		-97537.362		-3147.433
W164-31		-97518.308		-3145.424
W164-32		-97529.591		-3137.011
W164-33		-97533.766		-3142.610
W164-34		-97541.782		-3136.632
W164-35		-97538.693		-3172.761
W164-36		-97557.639		-3158.633
W164-37		-97543.595		-3179.334
W164-38		-97562.344		-3165.353
W164-39		-97579.699		-3189.989
W164-40		-97561.603		-3203.483



# 面積（座標法）計算書

地 番： W164-1-1

測点名	[1] X(i)	[2] X(i+1)-X(i-1)	[3] Y(i)	[4] Y(i+1)-Y(i-1)	[2]*[3]	[1]*[4]	方向角	夾 角	距 離
W164-21	-97533.851	-19.054	-3166.267	-2.008	60328.652290	195879.224640	143-17-18	90-00-00	14.074
W164-28	-97545.133	-3.511	-3157.854	18.835	11087.284703	-1837228.665203	53-17-18	90-00-00	13.000
W164-30	-97537.362	19.054	-3147.433	2.008	-59969.785173	-195886.275891	323-17-18	90-00-00	14.074
W164-29	-97526.080	3.511	-3155.846	-18.835	-11080.233452	1836869.798087	233-17-18	90-00-00	13.000
合計				倍面積	365.918367	-365.918367			54.148
				面 積	182.9591836	182.9591836			

# 面積（座標法）計算書

地番：W164-1-2

測点名	[1] X(i)	[2] X(i+1)-X(i-1)	[3] Y(i)	[4] Y(i+1)-Y(i-1)	[2]*[3]	[1]*[4]	方向角	夾角	距離
W164-29	-97526.080	-19.054	-3155.846	-2.008	60130.085926	195863.617030	143-17-18	90-00-00	14.074
W164-30	-97537.362	-3.511	-3147.433	18.835	11050.694686	-1837082.296464	53-17-18	90-00-00	13.000
W164-32	-97529.591	19.054	-3137.011	2.008	-59771.218809	-195870.668281	323-17-18	90-00-00	14.074
W164-31	-97518.308	3.511	-3145.424	-18.835	-11043.643436	1836723.429347	233-17-18	90-00-00	13.000
合計				倍面積	365.918367	-365.918367			54.148
				面積	182.9591837	182.9591837			

# 面積（座標法）計算書

地 番： W164-1-3

測点名	[1] X(i)	[2] X(i+1)-X(i-1)	[3] Y(i)	[4] Y(i+1)-Y(i-1)	[2]*[3]	[1]*[4]	方向角	夾 角	距 離
W164-31	-97518.308	-17.847	-3145.424	-0.390	56136.518282	38066.329740	143-17-18	90-00-00	14.074
W164-32	-97529.591	-3.501	-3137.011	18.848	10983.782013	-1838200.155520	53-17-18	90-00-00	13.016
W164-27	-97521.810	17.407	-3126.577	3.358	-54423.153177	-327455.446016	323-40-38	90-23-20	11.947
W164-1	-97512.184	10.066	-3133.653	-10.044	-31543.688796	979421.958137	278-26-31	134-45-53	3.000
W164-2	-97511.744	-6.124	-3136.621	-11.771	19209.729356	1147804.125980	233-17-18	134-50-47	10.982
合計				倍面積	363.187678	-363.187678			53.019
				面 積	181.5938391	181.5938391			

# 面積（座標法）計算書

地番：W164-1-4

測点名	[1] X(i)	[2] X(i+1)-X(i-1)	[3] Y(i)	[4] Y(i+1)-Y(i-1)	[2]*[3]	[1]*[4]	方向角	夾角	距離
W164-27	-97521.810	-6.744	-3126.577	-19.864	21086.869270	1937213.327093	233-17-18	89-36-40	20.000
W164-33	-97533.766	-19.972	-3142.610	-10.055	62765.226648	980717.292409	143-17-18	90-00-00	10.000
W164-34	-97541.782	1.797	-3136.632	19.139	-5637.966628	-1866825.496445	53-17-18	90-00-00	16.417
W164-9	-97531.968	14.761	-3123.471	13.887	-46105.315678	-1354378.836603	8-20-43	135-03-25	5.000
W164-10	-97527.021	10.158	-3122.745	-3.106	-31721.907139	302886.807075	323-40-38	135-19-55	6.468
合計				倍面積	386.906470	-386.906470			57.885
				面積	193.4532355	193.4532355			

# 面積（座標法）計算書

地 番： W164-1-5

測点名	[1] X(i)	[2] X(i+1)-X(i-1)	[3] Y(i)	[4] Y(i+1)-Y(i-1)	[2]*[3]	[1]*[4]	方向角	夾 角	距 離
W164-28	-97545.133	-19.226	-3157.854	-9.384	60714.028528	915380.263651	143-17-18	90-00-00	9.803
W164-26	-97552.992	-4.093	-3151.994	11.239	12901.180662	-1096439.915366	55-00-24	91-43-06	6.566
W164-8	-97549.226	11.210	-3146.615	15.362	-35273.011156	-1498558.120714	53-17-18	178-16-54	12.453
W164-34	-97541.782	15.461	-3136.632	4.005	-48494.513147	-390648.666995	323-17-18	90-00-00	10.000
W164-33	-97533.766	-3.351	-3142.610	-21.222	10531.346179	2069887.408357	233-17-18	90-00-00	19.016
合計				倍面積	379.031066	-379.031066			57.838
				面 積	189.5155332	189.5155332			

面積（座標法）計算書

地番：W164-2-1

測点名	[1] X(i)	[2] X(i+1)-X(i-1)	[3] Y(i)	[4] Y(i+1)-Y(i-1)	[2]*[3]	[1]*[4]	方向角	夾角	距離
W164-26	-97552.992	23.788	-3151.994	-7.635	-74980.630741	744781.642542	323-17-18	88-16-54	23.877
W164-21	-97533.851	14.299	-3166.267	-20.767	-45273.879644	2025467.814652	233-17-18	90-00-00	8.100
W164-35	-97538.693	-23.788	-3172.761	7.635	75474.638422	-744672.476261	143-17-18	90-00-00	23.634
W164-36	-97557.639	-14.299	-3158.633	20.767	45164.713363	-2025961.822333	55-00-24	91-43-06	8.104
合計				倍面積	384.841399	-384.841399			63.715
				面積	192.4206995	192.4206995			

# 面積（座標法）計算書

地番：W164-2-2

測点名	[1] X(i)	[2] X(i+1)-X(i-1)	[3] Y(i)	[4] Y(i+1)-Y(i-1)	[2]*[3]	[1]*[4]	方向角	夾角	距離
W164-35	-97538.693	14.044	-3172.761	-20.702	-44559.046311	2019216.688931	233-17-18	90-00-00	8.200
W164-37	-97543.595	-23.651	-3179.334	7.407	75194.032020	-722547.759388	143-17-18	90-00-00	23.388
W164-38	-97562.344	-14.044	-3165.353	20.702	44455.014449	-2019706.302195	55-00-24	91-43-06	8.204
W164-36	-97557.639	23.651	-3158.633	-7.407	-74704.418757	722651.791251	323-17-18	88-16-54	23.634
合計				倍面積	385.581401	-385.581401			63.426
				面積	192.7907008	192.7907008			



# 面積（座標法）計算書

地 番： W164-2-3

測点名	[1] X(i)	[2] X(i+1)-X(i-1)	[3] Y(i)	[4] Y(i+1)-Y(i-1)	[2]*[3]	[1]*[4]	方向角	夾 角	距 離
W164-37	-97543.595	13.804	-3179.334	-20.613	-43886.624706	2010641.254313	233-17-18	90-00-00	8.273
W164-22	-97548.540	-23.495	-3185.966	7.201	74855.065680	-702444.457099	143-17-18	90-00-00	23.140
W164-25	-97567.090	-13.804	-3172.133	20.613	43787.224519	-2011125.555900	55-00-24	91-43-06	8.276
W164-38	-97562.344	23.495	-3165.353	-7.201	-74370.764093	702543.857286	323-17-18	88-16-54	23.388
合計				倍面積	384.901399	-384.901399			63.077
				面 積	192.4506996	192.4506996			

# 面積（座標法）計算書

地番：W164-3-1

測点名	[1] X(i)	[2] X(i+1)-X(i-1)	[3] Y(i)	[4] Y(i+1)-Y(i-1)	[2]*[3]	[1]*[4]	方向角	夾角	距離
W164-22	-97548.540	12.123	-3185.966	-22.451	-38623.921275	2190089.816333	233-17-18	90-00-00	10.751
W164-23	-97554.967	-24.718	-3194.585	5.021	78964.739896	-489850.122658	143-17-18	90-00-00	22.817
W164-24	-97573.259	-12.123	-3180.945	22.451	38563.047664	-2190644.774143	55-00-24	91-43-06	10.756
W164-25	-97567.090	24.718	-3172.133	-5.021	-78409.782086	489910.996269	323-17-18	88-16-54	23.140
合計				倍面積	494.084199	-494.084199			67.464
				面積	247.0420995	247.0420995			

# 面積（座標法）計算書

地 番： W164-3-2

測点名	[1] X(i)	[2] X(i+1)-X(i-1)	[3] Y(i)	[4] Y(i+1)-Y(i-1)	[2]*[3]	[1]*[4]	方向角	夾 角	距 離
W164-40	-97561.603	-24.732	-3203.483	4.596	79228.561678	-448370.101976	143-17-20	90-00-02	22.574
W164-39	-97579.699	-16.311	-3189.989	15.889	52030.713991	-1550450.448520	53-17-18	89-59-58	2.987
W164-7	-97577.913	6.441	-3187.594	9.044	-20529.881962	-882505.449437	55-00-24	181-43-06	8.117
W164-24	-97573.259	22.946	-3180.945	-6.991	-72990.446359	682099.670978	323-17-18	88-16-54	22.817
W164-23	-97554.967	11.656	-3194.585	-22.538	-37235.824912	2198723.206521	233-17-18	90-00-00	11.100
合計				倍面積	503.122434	-503.122434			67.595
				面 積	251.5612174	251.5612174			

# 面積（座標法）計算書

地番：W164-3-3

測点名	[1] X(i)	[2] X(i+1)-X(i-1)	[3] Y(i)	[4] Y(i+1)-Y(i-1)	[2]*[3]	[1]*[4]	方向角	夾角	距離
W164-40	-97561.603	14.408	-3203.483	-18.440	-46156.509061	1799059.134879	233-17-18	89-59-58	6.170
W164-3	-97565.291	-6.660	-3208.429	-5.377	21369.309542	524605.991513	188-14-59	134-57-41	3.003
W164-4	-97568.263	-17.660	-3208.860	10.531	56669.315851	-1027500.754611	143-15-55	135-00-56	18.328
W164-5	-97582.951	-15.120	-3197.898	13.931	48352.339755	-1359420.101296	98-16-36	135-00-41	3.000
W164-6	-97583.383	3.252	-3194.929	7.909	-10390.030263	-771800.785508	53-17-18	135-00-42	6.163
W164-39	-97579.699	21.780	-3189.989	-8.554	-69479.244057	834691.333256	323-17-20	90-00-02	22.574
合計				倍面積	365.181767	-365.181767			59.238
				面積	182.5908836	182.5908836			