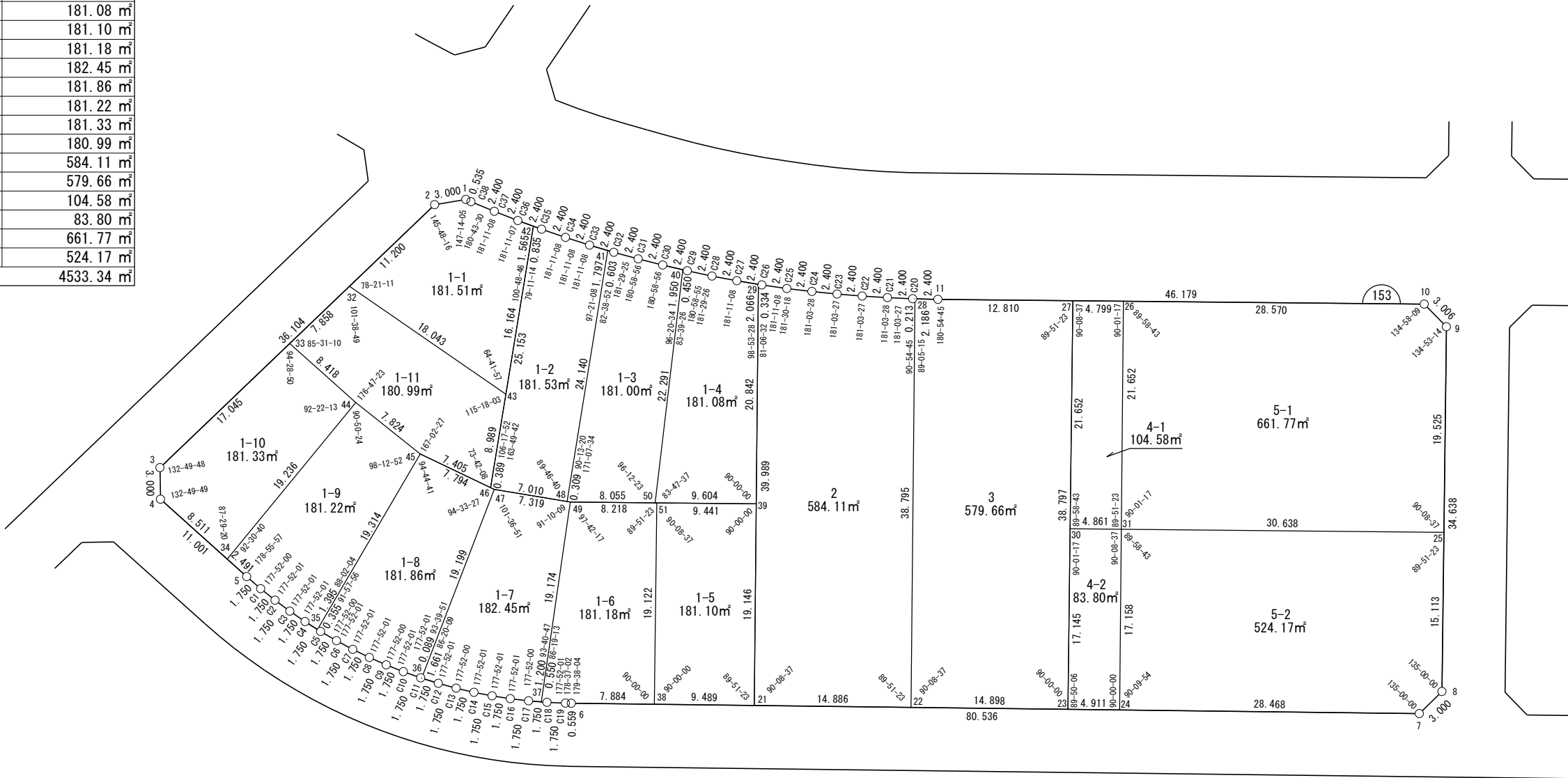


世界測地系

面積一覧表

地番名	地積
W153-1-1	181.51㎡
W153-1-2	181.53㎡
W153-1-3	181.00㎡
W153-1-4	181.08㎡
W153-1-5	181.10㎡
W153-1-6	181.18㎡
W153-1-7	182.45㎡
W153-1-8	181.86㎡
W153-1-9	181.22㎡
W153-1-10	181.33㎡
W153-1-11	180.99㎡
W153-2	584.11㎡
W153-3	579.66㎡
W153-4-1	104.58㎡
W153-4-2	83.80㎡
W153-5-1	661.77㎡
W153-5-2	524.17㎡
合計	4533.34㎡



座 標 一 覧 表

測 点 名	X 座 標	Y 座 標
W153-1	-97095.735	-3325.792
W153-2	-97095.398	-3328.773
W153-3	-97112.208	-3360.725
W153-4	-97115.105	-3361.506
W153-5	-97124.425	-3355.661
W153-6	-97144.477	-3329.345
W153-7	-97167.619	-3252.206
W153-8	-97166.197	-3249.565
W153-9	-97133.020	-3239.612
W153-10	-97130.375	-3241.042
W153-11	-97117.217	-3285.307
W153-21	-97149.469	-3312.705
W153-22	-97153.747	-3298.447
W153-23	-97158.028	-3284.177
W153-24	-97159.439	-3279.473
W153-25	-97151.721	-3245.222
W153-26	-97122.234	-3268.428

測 点 名	X 座 標	Y 座 標
W153-27	-97120.867	-3273.028
W153-28	-97116.560	-3287.392
W153-29	-97111.139	-3301.310
W153-30	-97141.606	-3279.250
W153-31	-97142.991	-3274.590
W153-32	-97100.613	-3338.686
W153-33	-97104.272	-3345.640
W153-34	-97122.315	-3356.985
W153-35	-97131.099	-3350.588
W153-36	-97138.266	-3342.351
W153-37	-97143.566	-3332.054
W153-38	-97146.742	-3321.794
W153-39	-97131.117	-3307.249
W153-40	-97107.825	-3307.830
W153-41	-97104.111	-3314.174
W153-42	-97099.944	-3320.326
W153-43	-97114.557	-3327.234

測 点 名	X 座 標	Y 座 標
W153-44	-97111.392	-3341.151
W153-45	-97117.767	-3336.614
W153-46	-97122.684	-3331.076
W153-47	-97122.942	-3330.785
W153-48	-97125.952	-3324.455
W153-49	-97126.085	-3324.176
W153-50	-97128.380	-3316.455
W153-51	-97128.426	-3316.299
W153-C1	-97125.890	-3354.704
W153-C2	-97127.319	-3353.693
W153-C3	-97128.708	-3352.630
W153-C4	-97130.057	-3351.516
W153-C5	-97131.364	-3350.352
W153-C6	-97132.627	-3349.140
W153-C7	-97133.843	-3347.882
W153-C8	-97135.012	-3346.580
W153-C9	-97136.132	-3345.235

測 点 名	X 座 標	Y 座 標
W153-C10	-97137.201	-3343.850
W153-C11	-97138.217	-3342.425
W153-C12	-97139.180	-3340.964
W153-C13	-97140.088	-3339.468
W153-C14	-97140.939	-3337.939
W153-C15	-97141.733	-3336.380
W153-C16	-97142.468	-3334.792
W153-C17	-97143.144	-3333.178
W153-C18	-97143.759	-3331.540
W153-C19	-97144.313	-3329.880
W153-C20	-97116.496	-3287.596
W153-C21	-97115.734	-3289.871
W153-C22	-97114.930	-3292.132
W153-C23	-97114.084	-3294.377
W153-C24	-97113.197	-3296.607
W153-C25	-97112.268	-3298.820
W153-C26	-97111.282	-3301.008

測 点 名	X 座 標	Y 座 標
W153-C27	-97110.251	-3303.175
W153-C28	-97109.175	-3305.320
W153-C29	-97108.044	-3307.437
W153-C30	-97106.877	-3309.534
W153-C31	-97105.674	-3311.610
W153-C32	-97104.435	-3313.665
W153-C33	-97103.144	-3315.688
W153-C34	-97101.810	-3317.684
W153-C35	-97100.436	-3319.651
W153-C36	-97099.022	-3321.590
W153-C37	-97097.567	-3323.499
W153-C38	-97096.074	-3325.378

面積（座標法）計算書

地 番： W153-1-1

測点名	[1] X(i)	[2] X(i+1)-X(i-1)	[3] Y(i)	[4] Y(i+1)-Y(i-1)	[2]*[3]	[1]*[4]	方向角	夾 角	距 離
W153-32	-97100.613	-19.158	-3338.686	1.539	63964.012609	-149454.459690	140-36-16	78-21-11	18.043
W153-43	-97114.557	0.669	-3327.234	18.360	-2226.227259	-1783032.908907	25-18-13	64-41-57	16.164
W153-42	-97099.944	15.535	-3320.326	5.644	-51582.012275	-548052.338083	306-06-59	100-48-46	1.565
W153-C36	-97099.022	2.377	-3321.590	-3.173	-7895.181225	308133.749869	307-18-06	181-11-07	2.400
W153-C37	-97097.567	2.948	-3323.499	-3.788	-9797.661576	367768.289591	308-29-14	181-11-08	2.400
W153-C38	-97096.074	1.832	-3325.378	-2.293	-6091.912749	222664.930099	309-12-44	180-43-30	0.535
W153-1	-97095.735	0.675	-3325.792	-3.396	-2245.634232	329714.183100	276-26-49	147-14-05	3.000
W153-2	-97095.398	-4.878	-3328.773	-12.893	16237.646316	1251895.524412	242-15-05	145-48-16	11.200
合計				倍面積	363.029607	-363.029607			55.307
				面 積	181.5148037	181.5148037			

面積（座標法）計算書

地 番： W153-1-2

測点名	[1] X(i)	[2] X(i+1)-X(i-1)	[3] Y(i)	[4] Y(i+1)-Y(i-1)	[2]*[3]	[1]*[4]	方向角	夾 角	距 離
W153-C33	-97103.144	2.300	-3315.688	-3.510	-7626.759172	340834.705429	303-44-43	181-11-08	2.400
W153-C34	-97101.810	2.707	-3317.684	-3.963	-8982.183591	384833.021229	304-55-51	181-11-08	2.400
W153-C35	-97100.436	1.866	-3319.651	-2.642	-6195.325888	256538.395185	306-06-59	181-11-08	0.835
W153-42	-97099.944	-22.247	-3320.326	-11.425	73868.700197	1109377.445230	205-18-13	79-11-14	25.153
W153-46	-97122.684	-22.998	-3331.076	-10.460	76607.648008	1015876.144971	131-36-05	106-17-52	0.389
W153-47	-97122.942	-3.268	-3330.785	6.621	10886.151364	-643098.005844	115-25-47	163-49-42	7.010
W153-48	-97125.952	18.831	-3324.455	16.612	-62604.152681	-1613430.902080	25-12-27	89-46-40	24.140
W153-41	-97104.111	22.808	-3314.174	8.767	-75591.011475	-851293.870881	302-33-35	97-21-08	1.797
合計				倍面積	363.066759	-363.066759			64.124
				面 積	181.5333799	181.5333799			

面積（座標法）計算書

地 番： W153-1-3

測点名	[1] X(i)	[2] X(i+1)-X(i-1)	[3] Y(i)	[4] Y(i+1)-Y(i-1)	[2]*[3]	[1]*[4]	方向角	夾 角	距 離
W153-48	-97125.952	-21.974	-3324.455	-10.002	73052.163528	971448.984843	115-25-47	90-13-20	0.309
W153-49	-97126.085	-2.428	-3324.176	8.000	8071.215344	-777030.770889	106-33-21	171-07-34	8.055
W153-50	-97128.380	18.260	-3316.455	16.346	-60557.823003	-1587619.625972	22-45-44	96-12-23	22.291
W153-40	-97107.825	21.503	-3307.830	6.921	-71129.380265	-672108.479729	299-06-18	96-20-34	1.950
W153-C30	-97106.877	2.151	-3309.534	-3.780	-7119.896068	367045.094118	300-05-14	180-58-56	2.400
W153-C31	-97105.674	2.441	-3311.610	-4.132	-8085.274108	401232.477091	301-04-10	180-58-56	2.400
W153-C32	-97104.435	1.563	-3313.665	-2.564	-5179.396272	248958.593194	302-33-35	181-29-25	0.603
W153-41	-97104.111	-21.517	-3314.174	-10.790	71310.392845	1047711.725343	205-12-27	82-38-52	24.140
合計				倍面積	362.001999	-362.001999			62.148
				面 積	181.0010000	181.0010000			

面積（座標法）計算書

地 番： W153-1-4

測点名	[1] X(i)	[2] X(i+1)-X(i-1)	[3] Y(i)	[4] Y(i+1)-Y(i-1)	[2]*[3]	[1]*[4]	方向角	夾 角	距 離
W153-50	-97128.380	-23.292	-3316.455	0.581	77245.989703	-56459.259720	106-33-21	83-47-37	9.604
W153-39	-97131.117	17.242	-3307.249	15.145	-57022.089615	-1471046.425353	16-33-21	90-00-00	20.842
W153-29	-97111.139	20.866	-3301.310	4.074	-68884.386569	-395613.884856	295-26-49	98-53-28	2.066
W153-C27	-97110.251	1.963	-3303.175	-4.011	-6485.300877	389462.914507	296-37-57	181-11-08	2.400
W153-C28	-97109.175	2.207	-3305.320	-4.262	-7294.772893	413855.910936	298-07-23	181-29-26	2.400
W153-C29	-97108.044	1.350	-3307.437	-2.510	-4465.516239	243720.587025	299-06-18	180-58-55	0.450
W153-40	-97107.825	-20.336	-3307.830	-9.018	67268.242784	875717.991168	202-45-44	83-39-26	22.291
合計				倍面積	362.166292	-362.166292			60.053
				面 積	181.0831464	181.0831464			

面積（座標法）計算書

地 番： W153-1-5

測点名	[1] X(i)	[2] X(i+1)-X(i-1)	[3] Y(i)	[4] Y(i+1)-Y(i-1)	[2]*[3]	[1]*[4]	方向角	夾 角	距 離
W153-38	-97146.742	-21.043	-3321.794	3.594	69899.581709	-349151.057090	106-41-58	90-00-00	9.489
W153-21	-97149.469	15.626	-3312.705	14.545	-51763.407295	-1413006.703111	16-33-21	89-51-23	19.146
W153-39	-97131.117	21.043	-3307.249	-3.594	-69593.522300	349094.897326	286-33-21	90-00-00	9.441
W153-51	-97128.426	-15.626	-3316.299	-14.545	51819.567058	1412700.643701	196-41-58	90-08-37	19.122
合計				倍面積	362.219172	-362.219172			57.198
				面 積	181.1095863	181.1095863			

面積（座標法）計算書

地 番： W153-1-6

測点名	[1] X(i)	[2] X(i+1)-X(i-1)	[3] Y(i)	[4] Y(i+1)-Y(i-1)	[2]*[3]	[1]*[4]	方向角	夾 角	距 離
W153-37	-97143.566	-17.674	-3332.054	-7.364	58891.807593	715352.367110	110-34-51	86-19-13	0.550
W153-C18	-97143.759	-0.747	-3331.540	2.175	2488.655625	-211254.025549	108-26-52	177-52-01	1.750
W153-C19	-97144.313	-0.718	-3329.880	2.195	2390.331422	-213189.742158	107-03-54	178-37-02	0.559
W153-6	-97144.477	-2.430	-3329.345	8.086	8088.943385	-785518.916925	106-41-58	179-38-04	7.884
W153-38	-97146.742	16.051	-3321.794	13.046	-53316.476681	-1267413.812599	16-41-58	90-00-00	19.122
W153-51	-97128.426	20.658	-3316.299	-2.382	-68506.948023	231379.027726	286-33-21	89-51-23	8.218
W153-49	-97126.085	-15.139	-3324.176	-15.756	50326.046797	1530282.742274	204-15-38	97-42-17	19.174
合計				倍面積	362.360120	-362.360120			57.257
				面 積	181.1800600	181.1800600			

面 積 (座 標 法) 計 算 書

地 番 : W153-1-7

測点名	[1] X(i)	[2] X(i+1)-X(i-1)	[3] Y(i)	[4] Y(i+1)-Y(i-1)	[2]*[3]	[1]*[4]	方向角	夾 角	距 離
W153-49	-97126.085	20.624	-3324.176	1.269	-68557.264274	-123229.541806	295-25-47	91-10-09	7.319
W153-47	-97122.942	-12.181	-3330.785	-18.176	40573.078625	1765270.580538	217-02-38	101-36-51	19.199
W153-36	-97138.266	-16.238	-3342.351	-10.179	54272.927478	988742.216795	123-22-47	86-20-09	1.661
W153-C12	-97139.180	-1.822	-3340.964	2.883	6086.069835	-280071.216530	121-14-48	177-52-01	1.750
W153-C13	-97140.088	-1.759	-3339.468	3.025	5874.482438	-293836.758804	119-06-48	177-52-00	1.750
W153-C14	-97140.939	-1.645	-3337.939	3.088	5491.904221	-299996.165749	116-58-49	177-52-01	1.750
W153-C15	-97141.733	-1.529	-3336.380	3.147	5102.019799	-305739.732799	114-50-50	177-52-01	1.750
W153-C16	-97142.468	-1.411	-3334.792	3.202	4705.389459	-311059.470359	112-42-51	177-52-01	1.750
W153-C17	-97143.144	-1.098	-3333.178	2.738	3658.413703	-265950.504779	110-34-51	177-52-00	1.200
W153-37	-97143.566	17.059	-3332.054	9.002	-56842.120747	-874494.307045	24-15-38	93-40-47	19.174
合計				倍面積 面 積	364.900540 182.4502701	-364.900540 182.4502701			57.303

面 積 (座 標 法) 計 算 書

地 番 : W153-1-8

測点名	[1] X(i)	[2] X(i+1)-X(i-1)	[3] Y(i)	[4] Y(i+1)-Y(i-1)	[2]*[3]	[1]*[4]	方向角	夾 角	距 離
W153-47	-97122.942	20.499	-3330.785	5.737	-68277.807546	-557233.204623	311-36-05	94-33-27	7.794
W153-45	-97117.767	-8.157	-3336.614	-19.802	27217.614522	1923163.962128	226-20-46	94-44-41	19.314
W153-35	-97131.099	-13.597	-3350.588	-13.738	45558.641573	1334385.467769	138-18-42	91-57-56	0.355
W153-C5	-97131.364	-1.528	-3350.352	1.448	5117.667437	-140609.401684	136-10-42	177-52-00	1.750
W153-C6	-97132.627	-2.479	-3349.140	2.469	8302.949396	-239865.612545	134-02-43	177-52-01	1.750
W153-C7	-97133.843	-2.385	-3347.882	2.560	7986.351817	-248665.591932	131-54-44	177-52-01	1.750
W153-C8	-97135.012	-2.289	-3346.580	2.647	7658.823874	-257121.049754	129-46-45	177-52-01	1.750
W153-C9	-97136.132	-2.188	-3345.235	2.730	7320.844950	-265220.212945	127-38-45	177-52-00	1.750
W153-C10	-97137.201	-2.085	-3343.850	2.810	6972.908649	-272951.833152	125-30-46	177-52-01	1.750
W153-C11	-97138.217	-1.065	-3342.425	1.499	3560.745581	-145561.677773	123-22-47	177-52-01	0.089
W153-36	-97138.266	15.275	-3342.351	11.640	-51055.019911	-1130684.565832	37-02-38	93-39-51	19.199
合計				倍面積	363.720345	-363.720345			57.251
				面 積	181.8601730	181.8601730			

面積（座標法）計算書

地 番： W153-1-9

測点名	[1] X(i)	[2] X(i+1)-X(i-1)	[3] Y(i)	[4] Y(i+1)-Y(i-1)	[2]*[3]	[1]*[4]	方向角	夾 角	距 離
W153-45	-97117.767	19.707	-3336.614	9.437	-65754.274988	-916512.864740	324-33-38	98-12-52	7.824
W153-44	-97111.392	-4.548	-3341.151	-20.371	15195.851672	1978216.835133	235-24-02	90-50-24	19.236
W153-34	-97122.315	-13.033	-3356.985	-14.511	43750.898028	1409314.311814	147-54-42	92-30-40	2.491
W153-5	-97124.425	-3.575	-3355.661	2.280	11996.719164	-221454.529548	146-50-39	178-55-57	1.750
W153-C1	-97125.890	-2.893	-3354.704	1.968	9706.302475	-191141.071248	144-42-39	177-52-00	1.750
W153-C2	-97127.319	-2.818	-3353.693	2.074	9450.992655	-201471.488263	142-34-40	177-52-01	1.750
W153-C3	-97128.708	-2.739	-3352.630	2.178	9182.597056	-211522.908923	140-26-41	177-52-01	1.750
W153-C4	-97130.057	-2.391	-3351.516	2.042	8013.528213	-198361.995961	138-18-42	177-52-01	1.395
W153-35	-97131.099	12.290	-3350.588	14.902	-41180.173078	-1447428.729460	46-20-46	88-02-04	19.314
合計				倍面積	362.441200	-362.441200			57.260
				面 積	181.2206001	181.2206001			

面積（座標法）計算書

地 番： W153-1-10

測点名	[1] X(i)	[2] X(i+1)-X(i-1)	[3] Y(i)	[4] Y(i+1)-Y(i-1)	[2]*[3]	[1]*[4]	方向角	夾 角	距 離
W153-44	-97111.392	18.043	-3341.151	11.345	-60285.668312	-1101690.394786	327-46-15	92-22-13	8.418
W153-33	-97104.272	-0.816	-3345.640	-19.574	2728.519438	1900754.933171	242-15-05	94-28-50	17.045
W153-3	-97112.208	-10.833	-3360.725	-15.866	36406.126153	1540759.223513	195-04-53	132-49-48	3.000
W153-4	-97115.105	-10.107	-3361.506	3.741	33975.320230	-363268.351302	147-54-42	132-49-49	8.511
W153-34	-97122.315	3.712	-3356.985	20.355	-12461.637350	-1976918.070756	55-24-02	87-29-20	19.236
合計				倍面積	362.660160	-362.660160			56.210
				面 積	181.3300801	181.3300801			

面積（座標法）計算書

地 番： W153-1-11

測点名	[1] X(i)	[2] X(i+1)-X(i-1)	[3] Y(i)	[4] Y(i+1)-Y(i-1)	[2]*[3]	[1]*[4]	方向角	夾 角	距 離
W153-32	-97100.613	10.285	-3338.686	-18.406	-34338.837859	1787195.383697	242-15-05	101-38-49	7.858
W153-33	-97104.272	-10.779	-3345.640	-2.465	36063.126456	239350.703626	147-46-15	85-31-10	8.418
W153-44	-97111.392	-13.495	-3341.151	9.026	45089.816639	-876526.440346	144-33-38	176-47-23	7.824
W153-45	-97117.767	-11.291	-3336.614	10.074	37674.594339	-978390.900328	131-36-05	167-02-27	7.405
W153-46	-97122.684	3.210	-3331.076	9.380	-10693.287095	-910973.247666	25-18-13	73-42-08	8.989
W153-43	-97114.557	22.070	-3327.234	-7.609	-73433.416480	738982.505017	320-36-16	115-18-03	18.043
合計				倍面積	361.996000	-361.996000			58.537
				面 積	180.9980000	180.9980000			

面 積 (座 標 法) 計 算 書

地 番 : W153-2

測点名	[1] X(i)	[2] X(i+1)-X(i-1)	[3] Y(i)	[4] Y(i+1)-Y(i-1)	[2]*[3]	[1]*[4]	方向角	夾 角	距 離
W153-28	-97116.560	37.250	-3287.392	10.851	-122455.976033	-1053819.595871	287-28-06	90-54-45	0.213
W153-C20	-97116.496	0.826	-3287.596	-2.479	-2717.080454	240725.767428	288-31-33	181-03-27	2.400
W153-C21	-97115.734	1.567	-3289.871	-4.536	-5154.445482	440530.944300	289-35-01	181-03-28	2.400
W153-C22	-97114.930	1.650	-3292.132	-4.506	-5432.754272	437643.739896	290-38-28	181-03-27	2.400
W153-C23	-97114.084	1.733	-3294.377	-4.475	-5709.561614	434607.278376	291-41-55	181-03-27	2.400
W153-C24	-97113.197	1.815	-3296.607	-4.442	-5984.765249	431422.598212	292-45-23	181-03-28	2.400
W153-C25	-97112.268	1.914	-3298.820	-4.401	-6315.140401	427376.526067	294-15-41	181-30-18	2.400
W153-C26	-97111.282	1.130	-3301.008	-2.490	-3729.519314	241798.731349	295-26-49	181-11-08	0.334
W153-29	-97111.139	-38.187	-3301.310	-11.697	126067.198581	1135876.804577	196-33-21	81-06-32	39.989
W153-21	-97149.469	-42.608	-3312.705	2.863	141148.054310	-278144.671869	106-41-58	90-08-37	14.886
W153-22	-97153.747	32.909	-3298.447	25.312	-108547.787867	-2459186.344671	16-33-21	89-51-23	38.795
合計				倍面積	1168.222202	-1168.222202			108.617
				面 積	584.1111013	584.1111013			

面積（座標法）計算書

地 番： W153-3

測点名	[1] X(i)	[2] X(i+1)-X(i-1)	[3] Y(i)	[4] Y(i+1)-Y(i-1)	[2]*[3]	[1]*[4]	方向角	夾 角	距 離
W153-27	-97120.867	40.811	-3273.028	-1.130	-133575.475193	109752.639871	286-33-21	89-51-23	12.810
W153-11	-97117.217	4.306	-3285.307	-14.364	-14147.823341	1394998.276226	287-28-06	180-54-45	2.186
W153-28	-97116.560	-36.530	-3287.392	-13.140	120088.002969	1276118.237335	196-33-21	89-05-15	38.795
W153-22	-97153.747	-41.467	-3298.447	3.216	136777.611009	-312409.608419	106-41-58	90-08-37	14.898
W153-23	-97158.028	32.880	-3284.177	25.419	-107982.993245	-2469618.867213	16-41-58	90-00-00	38.797
合計				倍面積	1159.322198	-1159.322198			107.486
				面 積	579.6610994	579.6610994			

面積（座標法）計算書

地番：W153-4-1

測点名	[1] X(i)	[2] X(i+1)-X(i-1)	[3] Y(i)	[4] Y(i+1)-Y(i-1)	[2]*[3]	[1]*[4]	方向角	夾角	距離
W153-26	-97122.234	22.124	-3268.428	1.562	-72310.485259	-151697.490441	286-33-21	90-01-17	4.799
W153-27	-97120.867	-19.371	-3273.028	-10.822	63402.545857	1051018.158351	196-41-58	90-08-37	21.652
W153-30	-97141.606	-22.124	-3279.250	-1.562	72549.905027	151727.746801	106-33-21	89-51-23	4.861
W153-31	-97142.991	19.371	-3274.590	10.822	-63432.802218	-1051257.578120	16-32-04	89-58-43	21.652
合計				倍面積	209.163407	-209.163407			52.964
				面積	104.5817039	104.5817039			

面積（座標法）計算書

地 番： W153-4-2

測点名	[1] X(i)	[2] X(i+1)-X(i-1)	[3] Y(i)	[4] Y(i+1)-Y(i-1)	[2]*[3]	[1]*[4]	方向角	夾 角	距 離
W153-23	-97158.028	-17.833	-3284.177	-0.223	58567.672101	21680.386391	106-41-58	90-00-00	4.911
W153-24	-97159.439	15.037	-3279.473	9.587	-49313.279170	-931421.243554	16-32-04	89-50-06	17.158
W153-31	-97142.991	17.833	-3274.590	0.223	-58396.712853	-21677.030961	286-33-21	90-01-17	4.861
W153-30	-97141.606	-15.037	-3279.250	-9.587	49309.923741	931250.284306	196-41-58	90-08-37	17.145
合計				倍面積	167.603818	-167.603818			44.075
				面 積	83.8019091	83.8019091			

面積（座標法）計算書

地 番： W153-5-1

測点名	[1] X(i)	[2] X(i+1)-X(i-1)	[3] Y(i)	[4] Y(i+1)-Y(i-1)	[2]*[3]	[1]*[4]	方向角	夾 角	距 離
W153-26	-97122.234	-12.615	-3268.428	-33.548	41232.206600	3258249.558981	196-32-04	89-58-43	21.652
W153-31	-97142.991	-29.487	-3274.590	23.206	96557.151488	-2254293.259313	106-33-21	90-01-17	30.638
W153-25	-97151.721	9.971	-3245.222	34.978	-32358.609676	-3398213.189734	16-41-58	90-08-37	19.525
W153-9	-97133.020	21.346	-3239.612	4.180	-69151.571412	-406018.984568	331-35-12	134-53-14	3.006
W153-10	-97130.375	10.785	-3241.042	-28.816	-34955.619246	2798952.316881	286-33-21	134-58-09	28.570
合計				倍面積	1323.557752	-1323.557752			103.391
				面 積	661.7788763	661.7788763			

面積（座標法）計算書

地 番： W153-5-2

測点名	[1] X(i)	[2] X(i+1)-X(i-1)	[3] Y(i)	[4] Y(i+1)-Y(i-1)	[2]*[3]	[1]*[4]	方向角	夾 角	距 離
W153-24	-97159.439	-24.628	-3279.473	22.384	80767.788852	-2174822.552796	106-41-58	90-09-54	28.468
W153-7	-97167.619	-6.758	-3252.206	29.908	21978.918350	-2906090.073831	61-41-58	135-00-00	3.000
W153-8	-97166.197	15.898	-3249.565	6.984	-51661.416994	-678592.920505	16-41-58	135-00-00	15.113
W153-25	-97151.721	23.206	-3245.222	-25.025	-75309.305609	2431229.330555	286-33-21	89-51-23	30.638
W153-31	-97142.991	-7.718	-3274.590	-34.251	25272.363583	3327227.868395	196-32-04	89-58-43	17.158
合計				倍面積	1048.348182	-1048.348182			94.377
				面 積	524.1740912	524.1740912			