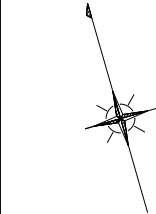


面積一覧表

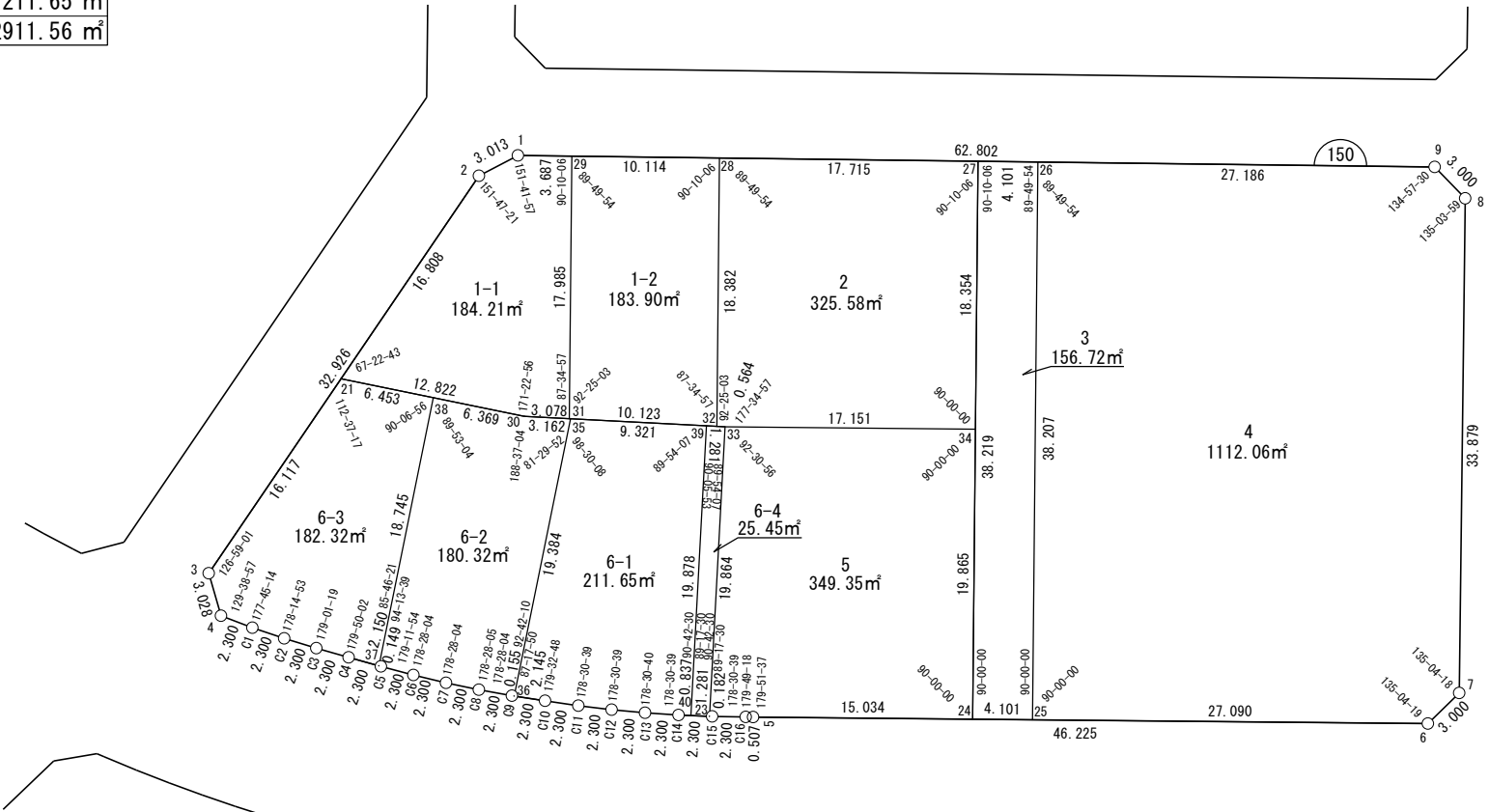
地番名	地積
W150-1-1	184.21 m ²
W150-1-2	183.90 m ²
W150-2	325.58 m ²
W150-3	156.72 m ²
W150-4	1112.06 m ²
W150-5	349.35 m ²
W150-6-2	180.32 m ²
W150-6-3	182.32 m ²
W150-6-4	25.45 m ²
W150-6-1	211.65 m ²
合計	2911.56 m ²



世界測地系

座 標 一 覧 表

測 点 名	X 座 標	Y 座 標
W150-1	-97064.297	-3286.769
W150-2	-97064.902	-3289.721
W150-3	-97085.972	-3315.022
W150-4	-97089.000	-3315.015
W150-5	-97105.717	-3281.888
W150-6	-97118.889	-3237.579
W150-7	-97117.463	-3234.939
W150-8	-97085.013	-3225.204
W150-9	-97082.370	-3226.624
W150-21	-97075.658	-3302.637
W150-23	-97104.846	-3284.748
W150-24	-97110.001	-3267.478
W150-25	-97111.169	-3263.547
W150-26	-97074.546	-3252.660
W150-27	-97073.366	-3256.587
W150-28	-97068.269	-3273.553
W150-29	-97065.358	-3283.239
W150-30	-97081.597	-3291.274
W150-31	-97082.597	-3288.363
W150-32	-97085.889	-3278.791
W150-33	-97086.072	-3278.257
W150-34	-97090.959	-3261.817
W150-35	-97082.625	-3288.283
W150-36	-97099.822	-3297.226
W150-37	-97095.277	-3305.566
W150-38	-97078.647	-3296.918
W150-39	-97085.656	-3279.468
W150-40	-97104.443	-3285.963
W150-C1	-97090.380	-3313.174
W150-C2	-97091.686	-3311.281
W150-C3	-97092.933	-3309.349
W150-C4	-97094.147	-3307.396
W150-C5	-97095.356	-3305.439
W150-C6	-97096.537	-3303.466
W150-C7	-97097.665	-3301.462
W150-C8	-97098.738	-3299.429
W150-C9	-97099.758	-3297.367
W150-C10	-97100.721	-3295.279
W150-C11	-97101.668	-3293.183
W150-C12	-97102.561	-3291.063
W150-C13	-97103.398	-3288.921
W150-C14	-97104.179	-3286.758
W150-C15	-97104.903	-3284.575
W150-C16	-97105.571	-3282.374



面積（座標法）計算書

地 番： W150-1-1

測点名	[1] X(i)	[2] X(i+1)-X(i-1)	[3] Y(i)	[4] Y(i+1)-Y(i-1)	[2]*[3]	[1]*[4]	方向角	夾 角	距 離
W150-29	-97065.358	18.300	-3283.239	1.594	-60083.577116	-154715.842647	286-43-27	90-10-06	3.687
W150-1	-97064.297	0.456	-3286.769	-6.483	-1499.442933	629256.900274	258-25-24	151-41-57	3.013
W150-2	-97064.902	-11.361	-3289.721	-15.868	37374.502798	1540213.421566	230-12-45	151-47-21	16.808
W150-21	-97075.658	-16.695	-3302.637	-1.552	55136.710478	150692.068462	117-35-28	67-22-43	12.822
W150-30	-97081.597	-6.939	-3291.274	14.274	22838.483446	-1385736.605922	108-58-24	171-22-56	3.078
W150-31	-97082.597	16.239	-3288.363	8.035	-53398.240541	-780078.377865	16-33-21	87-34-57	17.985
合計				倍面積	368.436132	-368.436132			57.393
				面 積	184.2180661	184.2180661			

面積（座標法）計算書

地番：W150-1-2

測点名	[1] X(i)	[2] X(i+1)-X(i-1)	[3] Y(i)	[4] Y(i+1)-Y(i-1)	[2]*[3]	[1]*[4]	方向角	夾角	距離
W150-31	-97082.597	-20.530	-3288.363	4.448	67511.216914	-431825.577587	108-58-24	92-25-03	10.123
W150-32	-97085.889	14.329	-3278.791	14.811	-46981.065169	-1437913.581404	16-33-21	87-34-57	18.382
W150-28	-97068.269	20.530	-3273.553	-4.448	-67207.147445	431761.842856	286-43-27	90-10-06	10.114
W150-29	-97065.358	-14.329	-3283.239	-14.811	47044.799901	1437609.511935	196-33-21	89-49-54	17.985
合計				倍面積	367.804200	-367.804200			56.604
				面積	183.9021001	183.9021001			

面積（座標法）計算書

地 番： W150-2

測点名	[1] X(i)	[2] X(i+1)-X(i-1)	[3] Y(i)	[4] Y(i+1)-Y(i-1)	[2]*[3]	[1]*[4]	方向角	夾 角	距 離
W150-32	-97085.889	-17.803	-3278.791	-4.705	58373.360642	456749.426708	108-58-24	92-25-03	0.564
W150-33	-97086.072	-5.071	-3278.257	16.973	16622.561400	-1647873.413188	106-33-21	177-34-57	17.151
W150-34	-97090.959	12.706	-3261.817	21.670	-41443.621207	-2103947.821418	16-33-21	90-00-00	18.354
W150-27	-97073.366	22.690	-3256.587	-11.735	-73893.582589	1139191.841037	286-43-27	90-10-06	17.715
W150-28	-97068.269	-12.522	-3273.553	-22.203	40992.445954	2155228.802660	196-33-21	89-49-54	18.382
合計				倍面積	651.164200	-651.164200			72.166
				面 積	325.5821005	325.5821005			

面積（座標法）計算書

地番：W150-3

測点名	[1] X(i)	[2] X(i+1)-X(i-1)	[3] Y(i)	[4] Y(i+1)-Y(i-1)	[2]*[3]	[1]*[4]	方向角	夾角	距離
W150-24	-97110.001	-37.803	-3267.478	-6.959	123520.344235	675806.138791	106-33-21	90-00-00	4.101
W150-25	-97111.169	35.454	-3263.547	14.818	-115706.089098	-1439017.379362	16-33-21	90-00-00	38.207
W150-26	-97074.546	37.803	-3252.660	6.959	-122960.170542	-675559.407299	286-43-27	90-10-06	4.101
W150-27	-97073.366	-35.454	-3256.587	-14.818	115459.357606	1438457.205668	196-33-21	89-49-54	38.219
合計				倍面積	313.442201	-313.442201			84.628
				面積	156.7211007	156.7211007			

面積（座標法）計算書

地番：W150-4

測点名	[1] X(i)	[2] X(i+1)-X(i-1)	[3] Y(i)	[4] Y(i+1)-Y(i-1)	[2]*[3]	[1]*[4]	方向角	夾角	距離
W150-25	-97111.169	-44.342	-3263.547	15.080	144712.526326	-1464447.842401	106-33-21	90-00-00	27.090
W150-6	-97118.889	-6.294	-3237.579	28.607	20375.799772	-2778295.982591	61-37-40	135-04-19	3.000
W150-7	-97117.463	33.876	-3234.939	12.375	-109585.917737	-1201842.712687	16-41-58	135-04-18	33.879
W150-8	-97085.013	35.093	-3225.204	8.316	-113182.543397	-807337.112994	331-45-57	135-03-59	3.000
W150-9	-97082.370	10.466	-3226.624	-27.455	-33771.070607	2665421.970870	286-43-27	134-57-30	27.186
W150-26	-97074.546	-28.800	-3252.660	-36.923	93675.327843	3584277.557605	196-33-21	89-49-54	38.207
合計				倍面積	2224.122199	-2224.122199			132.362
				面積	1112.0610996	1112.0610996			

面 積 (座 標 法) 計 算 書

地 番 : W150-5

測点名	[1] X(i)	[2] X(i+1)-X(i-1)	[3] Y(i)	[4] Y(i+1)-Y(i-1)	[2]*[3]	[1]*[4]	方向角	夾 角	距 離
W150-33	-97086.072	-13.887	-3278.257	-22.931	45524.856923	2226235.852198	199-04-17	92-30-56	19.864
W150-23	-97104.846	-18.832	-3284.748	-6.317	61856.879248	613456.446667	108-21-47	89-17-30	0.182
W150-C15	-97104.903	-0.725	-3284.575	2.374	2381.580044	-230537.110656	106-52-26	178-30-39	2.300
W150-C16	-97105.571	-0.813	-3282.374	2.687	2669.459964	-260885.633492	106-41-44	179-49-18	0.507
W150-5	-97105.717	-4.429	-3281.888	14.896	14536.980603	-1446477.522074	106-33-21	179-51-37	15.034
W150-24	-97110.001	14.758	-3267.478	20.071	-48220.267264	-1949076.098453	16-33-21	90-00-00	19.865
W150-34	-97090.959	23.929	-3261.817	-10.779	-78050.786186	1046585.362478	286-33-21	90-00-00	17.151
合計				倍面積	698.703333	-698.703333			74.903
				面 積	349.3516667	349.3516667			

面積（座標法）計算書

地 番： W150-6-1

測点名	[1] X(i)	[2] X(i+1)-X(i-1)	[3] Y(i)	[4] Y(i+1)-Y(i-1)	[2]*[3]	[1]*[4]	方向角	夾 角	距 離
W150-39	-97085.656	21.818	-3279.468	-2.320	-71550.046267	225223.823878	288-58-24	89-54-07	9.321
W150-35	-97082.625	-14.167	-3288.283	-17.758	46584.867594	1723997.821030	207-28-32	98-30-08	19.384
W150-36	-97099.822	-18.096	-3297.226	-6.996	59667.453495	679281.250952	114-46-22	87-17-50	2.145
W150-C10	-97100.721	-1.846	-3295.279	4.043	6082.853515	-392615.964909	114-19-10	179-32-48	2.300
W150-C11	-97101.668	-1.840	-3293.183	4.216	6058.179322	-409356.533300	112-49-49	178-30-39	2.300
W150-C12	-97102.561	-1.729	-3291.063	4.262	5691.687759	-413864.077336	111-20-28	178-30-39	2.300
W150-C13	-97103.398	-1.618	-3288.921	4.306	5321.785447	-418091.933962	109-51-08	178-30-40	2.300
W150-C14	-97104.179	-1.045	-3286.758	2.957	3433.617124	-287184.705544	108-21-47	178-30-39	0.837
W150-40	-97104.443	18.523	-3285.963	7.289	-60867.096564	-707812.982235	19-04-17	90-42-30	19.878
合計				倍面積	423.301428	-423.301428			60.765
				面 積	211.6507141	211.6507141			

面積（座標法）計算書

地番：W150-6-2

測点名	[1] X(i)	[2] X(i+1)-X(i-1)	[3] Y(i)	[4] Y(i+1)-Y(i-1)	[2]*[3]	[1]*[4]	方向角	夾角	距離
W150-36	-97099.822	17.133	-3297.226	9.084	-56490.182495	-882032.846217	27-28-32	92-42-10	19.384
W150-35	-97082.625	18.226	-3288.283	5.953	-59931.219818	-577896.874084	288-58-24	81-29-52	3.162
W150-30	-97081.597	3.978	-3291.274	-8.635	-13092.118714	838283.225215	297-35-28	188-37-04	6.369
W150-38	-97078.647	-13.681	-3296.918	-14.292	45103.999007	1387496.523040	207-28-32	89-53-04	18.745
W150-37	-97095.277	-16.709	-3305.566	-8.521	55231.683583	827380.830964	121-42-11	94-13-39	0.149
W150-C5	-97095.356	-1.259	-3305.439	2.100	4162.596017	-203899.293721	120-54-05	179-11-54	2.300
W150-C6	-97096.537	-2.309	-3303.466	3.977	7627.052206	-386177.142516	119-22-09	178-28-04	2.300
W150-C7	-97097.665	-2.202	-3301.462	4.038	7268.893922	-392052.279305	117-50-13	178-28-04	2.300
W150-C8	-97098.738	-2.093	-3299.429	4.095	6905.607991	-397632.665674	116-18-18	178-28-05	2.300
W150-C9	-97099.758	-1.084	-3297.367	2.202	3574.329099	-213830.118500	114-46-22	178-28-04	0.155
合計				倍面積	360.640800	-360.640800			57.164
				面積	180.3204000	180.3204000			

面 積 (座 標 法) 計 算 書

地 番 : W150-6-3

測点名	[1] X(i)	[2] X(i+1)-X(i-1)	[3] Y(i)	[4] Y(i+1)-Y(i-1)	[2]*[3]	[1]*[4]	方向角	夾 角	距 離
W150-38	-97078.647	19.619	-3296.918	2.929	-64682.671791	-284343.908807	297-35-28	90-06-56	6.453
W150-21	-97075.658	-7.325	-3302.637	-18.104	24193.007050	1757471.714633	230-12-45	112-37-17	16.117
W150-3	-97085.972	-13.342	-3315.022	-12.378	44229.564067	1201694.109479	179-51-42	129-38-57	3.028
W150-4	-97089.000	-4.407	-3315.015	1.848	14609.678399	-179401.443404	126-50-43	126-59-01	2.300
W150-C1	-97090.380	-2.685	-3313.174	3.734	8896.100904	-362497.874289	124-35-57	177-45-14	2.300
W150-C2	-97091.686	-2.553	-3311.281	3.825	8455.026294	-371404.941159	122-50-50	178-14-53	2.300
W150-C3	-97092.933	-2.462	-3309.349	3.885	8146.941073	-377247.114981	121-52-09	179-01-19	2.300
W150-C4	-97094.147	-2.344	-3307.396	3.783	7753.984548	-367291.014488	121-42-11	179-50-02	2.150
W150-37	-97095.277	15.500	-3305.566	10.478	-51236.989380	-1017344.168148	27-28-32	85-46-21	18.745
合計				倍面積	364.641166	-364.641166			55.693
				面 積	182.3205834	182.3205834			

面積（座標法）計算書

地番：W150-6-4

測点名	[1] X(i)	[2] X(i+1)-X(i-1)	[3] Y(i)	[4] Y(i+1)-Y(i-1)	[2]*[3]	[1]*[4]	方向角	夾角	距離
W150-23	-97104.846	18.371	-3284.748	7.706	-60342.687081	-748309.889277	19-04-17	90-42-30	19.864
W150-33	-97086.072	19.190	-3278.257	5.279	-62911.362318	-512556.750348	288-58-24	89-54-07	1.281
W150-39	-97085.656	-18.371	-3279.468	-7.706	60245.701394	748162.003418	199-04-17	90-05-53	19.878
W150-40	-97104.443	-19.190	-3285.963	-5.279	63059.248177	512653.736036	108-21-47	89-17-30	1.281
合計				倍面積	50.900171	-50.900171			42.304
				面積	25.4500859	25.4500859			