

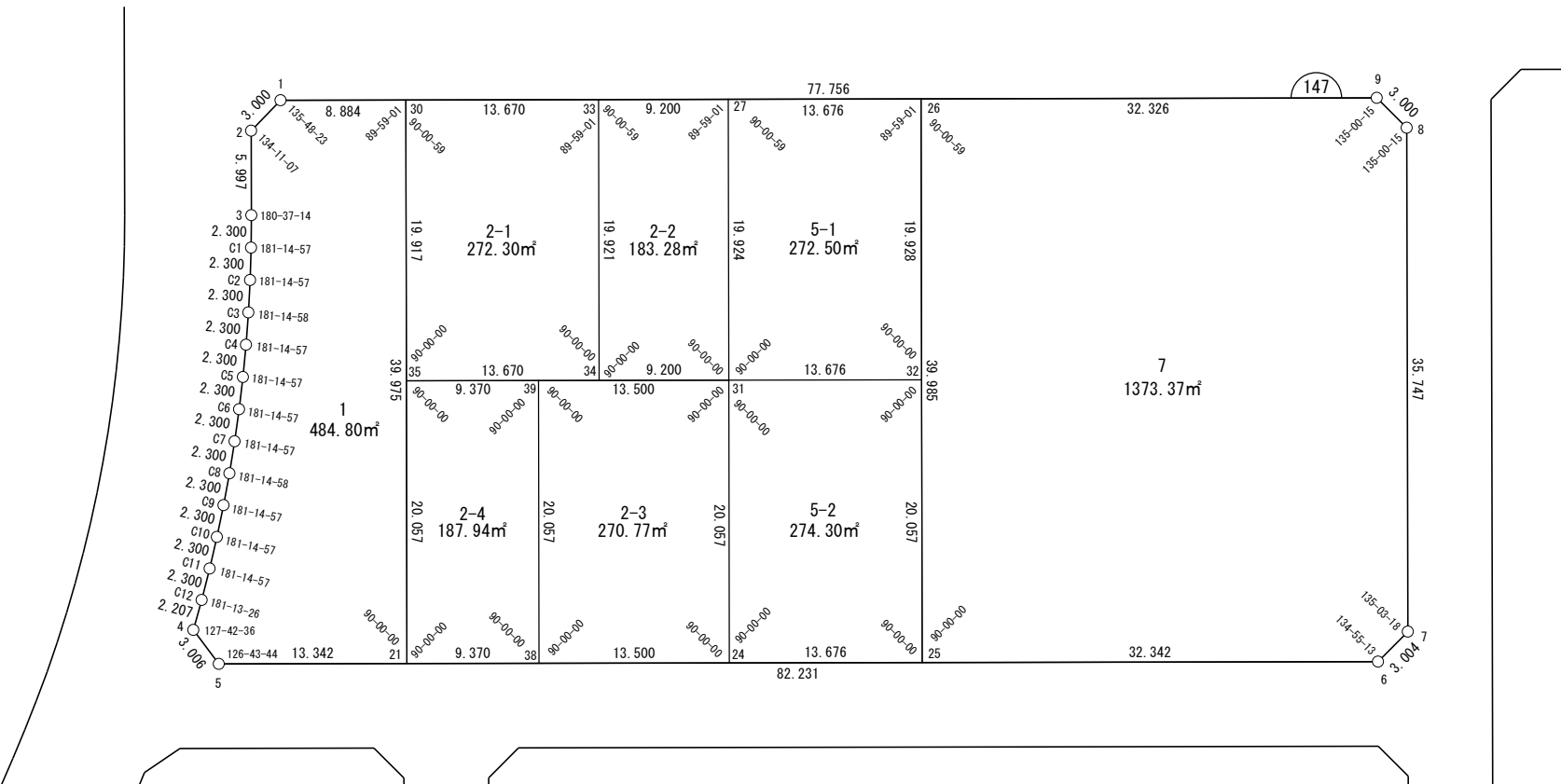
世界測地系

面積一覧表

地番名	地積
W147-1	484.80 m ²
W147-2-1	272.30 m ²
W147-2-2	183.28 m ²
W147-2-3	270.77 m ²
W147-2-4	187.94 m ²
W147-5-1	272.50 m ²
W147-5-2	274.30 m ²
W147-7	1373.37 m ²
合計	3319.26 m ²

座 標 一 覧 表

測 点 名	X 座 標	Y 座 標
W147-1	-96971.906	-3274.666
W147-2	-96973.365	-3277.287
W147-3	-96979.110	-3279.010
W147-4	-97006.080	-3291.466
W147-5	-97008.905	-3290.438
W147-6	-97032.568	-3211.686
W147-7	-97031.141	-3209.042
W147-8	-96996.901	-3198.770
W147-9	-96994.260	-3200.192
W147-21	-97012.744	-3277.660
W147-24	-97019.325	-3255.757
W147-25	-97023.261	-3242.660
W147-26	-96984.967	-3231.154
W147-27	-96981.035	-3244.252
W147-30	-96974.460	-3266.157
W147-31	-97000.116	-3249.985
W147-32	-97004.052	-3236.888
W147-33	-96978.390	-3253.064
W147-34	-96997.469	-3258.796
W147-35	-96993.535	-3271.888
W147-38	-97015.440	-3268.686
W147-39	-96996.231	-3262.914
W147-C1	-96981.305	-3279.695
W147-C2	-96983.486	-3280.427
W147-C3	-96985.649	-3281.207
W147-C4	-96987.796	-3282.034
W147-C5	-96989.923	-3282.907
W147-C6	-96992.031	-3283.827
W147-C7	-96994.119	-3284.792
W147-C8	-96996.185	-3285.803
W147-C9	-96998.229	-3286.858
W147-C10	-97000.249	-3287.958
W147-C11	-97002.244	-3289.101
W147-C12	-97004.214	-3290.288



面積（座標法）計算書

地番：W147-1

測点名	[1] X(i)	[2] X(i+1)-X(i-1)	[3] Y(i)	[4] Y(i+1)-Y(i-1)	[2]*[3]	[1]*[4]	方向角	夾角	距離
W147-30	-96974.460	40.838	-3266.157	2.994	-133382.848193	-290366.475704	286-42-28	89-59-01	8.884
W147-1	-96971.906	1.095	-3274.666	-11.130	-3585.507415	1079282.478684	240-53-35	134-11-07	3.000
W147-2	-96973.365	-7.204	-3277.287	-4.344	23608.317191	421270.074031	196-41-58	135-48-23	5.997
W147-3	-96979.110	-7.940	-3279.010	-2.408	26035.797711	233533.444934	197-19-12	180-37-14	2.300
W147-C1	-96981.305	-4.376	-3279.695	-1.417	14351.566927	137435.844720	198-34-09	181-14-57	2.300
W147-C2	-96983.486	-4.344	-3280.427	-1.512	14250.010161	146658.485183	199-49-06	181-14-57	2.300
W147-C3	-96985.649	-4.310	-3281.207	-1.607	14141.835457	155811.810079	201-04-04	181-14-58	2.300
W147-C4	-96987.796	-4.274	-3282.034	-1.700	14027.084082	164891.424479	202-19-01	181-14-57	2.300
W147-C5	-96989.923	-4.236	-3282.907	-1.793	13905.801330	173893.029765	203-33-58	181-14-57	2.300
W147-C6	-96992.031	-4.196	-3283.827	-1.885	13778.033593	182812.346063	204-48-55	181-14-57	2.300
W147-C7	-96994.119	-4.154	-3284.792	-1.976	13643.831017	191645.092875	206-03-52	181-14-57	2.300
W147-C8	-96996.185	-4.110	-3285.803	-2.066	13503.246207	200387.076390	207-18-50	181-14-58	2.300
W147-C9	-96998.229	-4.064	-3286.858	-2.155	13356.332950	209034.131326	208-33-47	181-14-57	2.300
W147-C10	-97000.249	-4.016	-3287.958	-2.243	13203.149525	217582.120951	209-48-44	181-14-57	2.300
W147-C11	-97002.244	-3.966	-3289.101	-2.330	13043.756435	226026.975919	211-03-41	181-14-57	2.300
W147-C12	-97004.214	-3.836	-3290.288	-2.365	12621.013657	229457.260793	212-17-07	181-13-26	2.207
W147-4	-97006.080	-4.690	-3291.466	-0.150	15437.633808	14594.962464	159-59-43	127-42-36	3.006
W147-5	-97008.905	-6.664	-3290.438	13.806	21927.408311	-1339330.032518	106-43-27	126-43-44	13.342
W147-21	-97012.744	34.444	-3277.660	24.281	-112896.860969	-2355589.652230	16-43-27	90-00-00	39.975
合計				倍面積	969.601791	-969.601791			104.011
				面積	484.8008956	484.8008956			

面積（座標法）計算書

地番：W147-2-1

測点名	[1] X(i)	[2] X(i+1)-X(i-1)	[3] Y(i)	[4] Y(i+1)-Y(i-1)	[2]*[3]	[1]*[4]	方向角	夾角	距離
W147-30	-96974.460	-15.145	-3266.157	-18.825	49464.915419	1825522.573800	196-43-27	90-00-59	19.917
W147-35	-96993.535	-23.009	-3271.888	7.361	75281.650851	-713940.095627	106-43-27	90-00-00	13.670
W147-34	-96997.469	15.145	-3258.796	18.825	-49353.439976	-1825955.706015	16-43-27	90-00-00	19.921
W147-33	-96978.390	23.009	-3253.064	-7.361	-74848.518635	713828.620184	286-42-28	89-59-01	13.670
合計				倍面積	544.607658	-544.607658			67.178
				面積	272.3038293	272.3038293			

面積（座標法）計算書

地番：W147-2-2

測点名	[1] X(i)	[2] X(i+1)-X(i-1)	[3] Y(i)	[4] Y(i+1)-Y(i-1)	[2]*[3]	[1]*[4]	方向角	夾角	距離
W147-33	-96978.390	-16.434	-3253.064	-14.544	53459.708169	1410475.154267	196-43-27	90-00-59	19.921
W147-34	-96997.469	-21.726	-3258.796	3.078	70800.521066	-298581.940031	106-43-27	90-00-00	9.200
W147-31	-97000.116	16.434	-3249.985	14.544	-53409.121375	-1410791.141631	16-43-27	90-00-00	19.924
W147-27	-96981.035	21.726	-3244.252	-3.078	-70484.533702	298531.353237	286-42-28	89-59-01	9.200
合計				倍面積	366.574158	-366.574158			58.245
				面積	183.2870791	183.2870791			

面積（座標法）計算書

地番：W147-2-3

測点名	[1] X(i)	[2] X(i+1)-X(i-1)	[3] Y(i)	[4] Y(i+1)-Y(i-1)	[2]*[3]	[1]*[4]	方向角	夾角	距離
W147-38	-97015.440	-23.094	-3268.686	7.157	75486.614659	-694363.776383	106-43-27	90-00-00	13.500
W147-24	-97019.325	15.324	-3255.757	18.701	-49891.791180	-1814346.272283	16-43-27	90-00-00	20.057
W147-31	-97000.116	23.094	-3249.985	-7.157	-75054.739089	694254.097433	286-43-27	90-00-00	13.500
W147-39	-96996.231	-15.324	-3262.914	-18.701	50001.470130	1813914.396714	196-43-27	90-00-00	20.057
合計				倍面積	541.554518	-541.554518			67.114
				面積	270.7772594	270.7772594			

面積（座標法）計算書

地番：W147-2-4

測点名	[1] X(i)	[2] X(i+1)-X(i-1)	[3] Y(i)	[4] Y(i+1)-Y(i-1)	[2]*[3]	[1]*[4]	方向角	夾角	距離
W147-35	-96993.535	-16.513	-3271.888	-14.746	54027.320399	1430244.498197	196-43-27	90-00-00	20.057
W147-21	-97012.744	-21.905	-3277.660	3.202	71798.667322	-310649.021895	106-43-27	90-00-00	9.370
W147-38	-97015.440	16.513	-3268.686	14.746	-53974.444697	-1430567.511159	16-43-27	90-00-00	20.057
W147-39	-96996.231	21.905	-3262.914	-3.202	-71475.654360	310596.146193	286-43-27	90-00-00	9.370
合計				倍面積	375.888663	-375.888663			58.854
				面積	187.9443320	187.9443320			

面積（座標法）計算書

地番：W147-5-1

測点名	[1] X(i)	[2] X(i+1)-X(i-1)	[3] Y(i)	[4] Y(i+1)-Y(i-1)	[2]*[3]	[1]*[4]	方向角	夾角	距離
W147-32	-97004.052	15.149	-3236.888	18.832	-49037.085691	-1826763.141076	16-43-27	90-00-00	19.928
W147-26	-96984.967	23.016	-3231.154	-7.364	-74369.801233	714192.359086	286-42-28	89-59-01	13.676
W147-27	-96981.035	-15.149	-3244.252	-18.832	49148.645496	1826329.698681	196-43-27	90-00-59	19.924
W147-31	-97000.116	-23.016	-3249.985	7.364	74803.243627	-714303.918891	106-43-27	90-00-00	13.676
合計				倍面積	545.002199	-545.002199			67.204
				面積	272.5010999	272.5010999			

面積（座標法）計算書

地番：W147-5-2

測点名	[1] X(i)	[2] X(i+1)-X(i-1)	[3] Y(i)	[4] Y(i+1)-Y(i-1)	[2]*[3]	[1]*[4]	方向角	夾角	距離
W147-31	-97000.116	-15.274	-3249.985	-18.869	49639.034426	1830307.920276	196-43-27	90-00-00	20.057
W147-24	-97019.325	-23.144	-3255.757	7.326	75352.632695	-710715.678633	106-43-27	90-00-00	13.676
W147-25	-97023.261	15.274	-3242.660	18.869	-49527.147443	-1830744.635492	16-43-27	90-00-00	20.057
W147-32	-97004.052	23.144	-3236.888	-7.326	-74915.917479	710603.791650	286-43-27	90-00-00	13.676
合計				倍面積	548.602199	-548.602199			67.466
				面積	274.3010995	274.3010995			

面積（座標法）計算書

地 番： W147-7

測点名	[1] X(i)	[2] X(i+1)-X(i-1)	[3] Y(i)	[4] Y(i+1)-Y(i-1)	[2]*[3]	[1]*[4]	方向角	夾 角	距 離
W147-25	-97023.261	-47.601	-3242.660	19.468	154353.077307	-1888817.423064	106-43-27	90-00-00	32.342
W147-6	-97032.568	-7.880	-3211.686	33.617	25308.799122	-3261985.664615	61-38-40	134-55-13	3.004
W147-7	-97031.141	35.666	-3209.042	12.915	-114454.258896	-1253198.413470	16-41-58	135-03-18	35.747
W147-8	-96996.901	36.881	-3198.770	8.850	-117973.288124	-858422.441625	331-42-13	135-00-15	3.000
W147-9	-96994.260	11.935	-3200.192	-32.383	-38192.982016	3140974.930727	286-42-28	135-00-15	32.326
W147-26	-96984.967	-29.001	-3231.154	-42.467	93705.394809	4118702.269845	196-43-27	90-00-59	39.985
合計				倍面積	2746.742202	-2746.742202			146.404
				面 積	1373.3711015	1373.3711015			