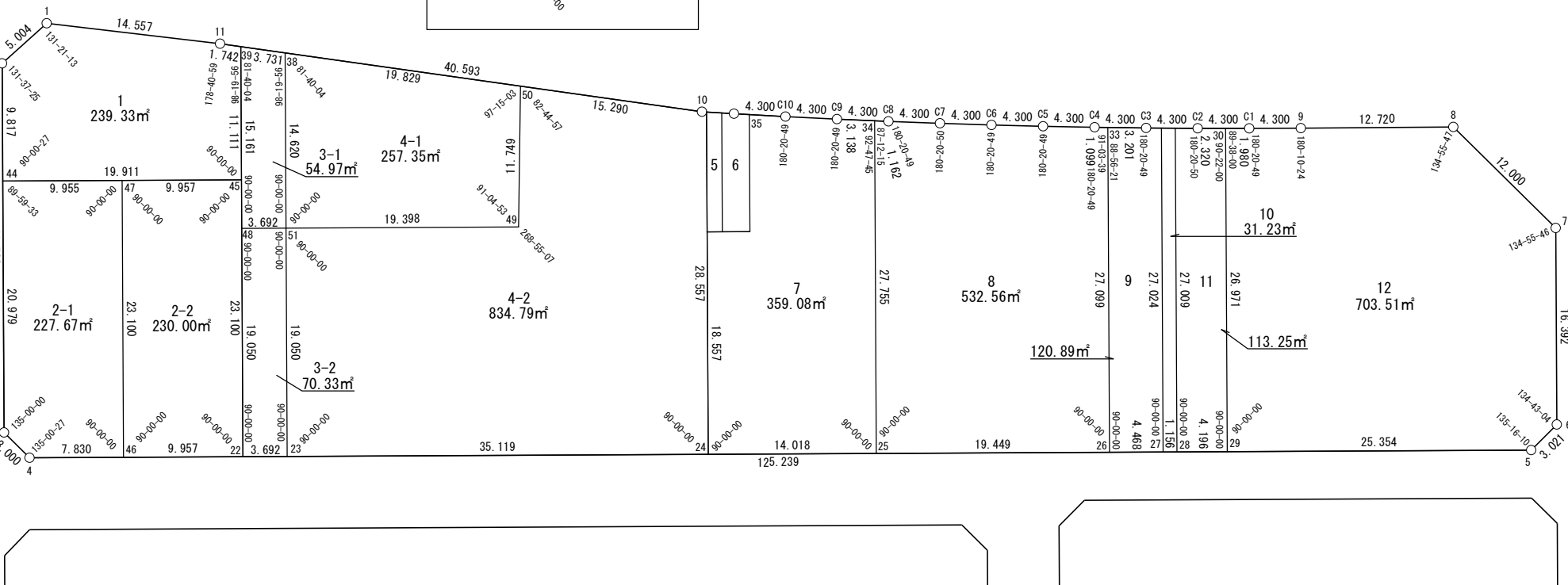
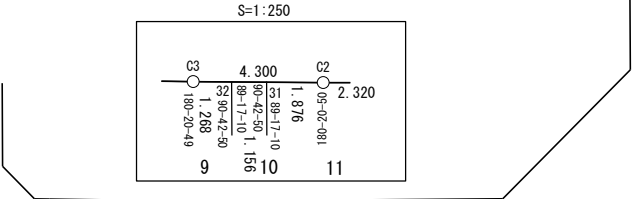
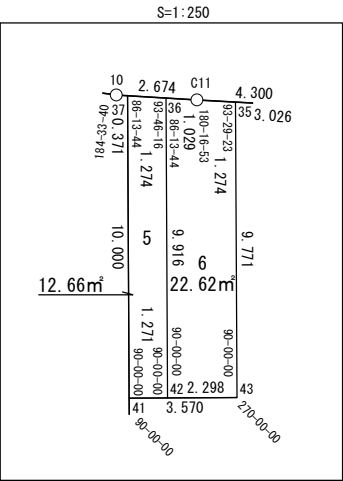


面積一覧表	
地番名	地積
W146-1	239.33 m ²
W146-2-1	227.67 m ²
W146-2-2	230.00 m ²
W146-3-1	54.97 m ²
W146-3-2	70.33 m ²
W146-4-1	257.35 m ²
W146-4-2	834.79 m ²
W146-5	12.66 m ²
W146-6	22.62 m ²
W146-7	359.08 m ²
W146-8	532.56 m ²
W146-9	120.89 m ²
W146-10	31.23 m ²
W146-11	113.25 m ²
W146-12	703.51 m ²
合計	3810.24 m ²



座 標 一 覧 表

測 点 名	X 座 標	Y 座 標
W146-1	-96931.923	-3260.938
W146-2	-96934.032	-3265.476
W146-3	-96963.529	-3274.326
W146-4	-96966.171	-3272.904
W146-5	-97002.175	-3152.952
W146-6	-97000.756	-3150.285
W146-7	-96985.055	-3145.576
W146-8	-96974.497	-3151.279
W146-9	-96970.873	-3163.471
W146-10	-96954.961	-3210.833
W146-11	-96937.780	-3247.611
W146-22	-96971.284	-3255.868
W146-23	-96972.346	-3252.332

測 点 名	X 座 標	Y 座 標
W146-24	-96982.442	-3218.695
W146-25	-96986.472	-3205.269
W146-26	-96992.063	-3186.641
W146-27	-96993.348	-3182.362
W146-28	-96993.680	-3181.255
W146-29	-96994.886	-3177.235
W146-30	-96969.054	-3169.481
W146-31	-96967.811	-3173.490
W146-32	-96967.465	-3174.593
W146-33	-96966.108	-3178.850
W146-34	-96959.889	-3197.290
W146-35	-96956.336	-3207.132
W146-36	-96955.536	-3209.292

測 点 名	X 座 標	Y 座 標
W146-37	-96955.091	-3210.486
W146-38	-96940.097	-3242.652
W146-39	-96938.517	-3246.032
W146-41	-96964.668	-3213.361
W146-42	-96965.034	-3212.143
W146-43	-96965.695	-3209.941
W146-44	-96943.435	-3268.297
W146-45	-96949.159	-3249.227
W146-46	-96968.422	-3265.404
W146-47	-96946.297	-3258.763
W146-48	-96953.038	-3250.391
W146-49	-96959.677	-3228.276
W146-50	-96948.489	-3224.686

測 点 名	X 座 標	Y 座 標
W146-51	-96954.100	-3246.855
W146-C1	-96969.635	-3167.589
W146-C2	-96968.373	-3171.700
W146-C3	-96967.085	-3175.802
W146-C4	-96965.773	-3179.897
W146-C5	-96964.436	-3183.984
W146-C6	-96963.074	-3188.063
W146-C7	-96961.688	-3192.133
W146-C8	-96960.277	-3196.195
W146-C9	-96958.841	-3200.248
W146-C10	-96957.381	-3204.293
W146-C11	-96955.896	-3208.328



世界測地系

面積（座標法）計算書

地 番： W146-1

測点名	[1] X(i)	[2] X(i+1)-X(i-1)	[3] Y(i)	[4] Y(i+1)-Y(i-1)	[2]*[3]	[1]*[4]	方向角	夾 角	距 離
W146-1	-96931.923	3.748	-3260.938	-17.866	-12221.514755	1731749.127461	245-04-36	131-21-13	5.004
W146-2	-96934.032	-11.512	-3265.476	-7.359	37591.263721	713369.338286	196-42-01	131-37-25	9.817
W146-44	-96943.435	-15.127	-3268.297	16.250	49440.096086	-1575300.232502	106-42-28	90-00-27	19.911
W146-45	-96949.159	4.918	-3249.227	22.265	-15978.729682	-2158577.801331	16-42-28	90-00-00	11.111
W146-39	-96938.517	11.379	-3246.032	1.616	-36937.638551	-156646.612379	295-02-24	98-19-56	1.742
W146-11	-96937.780	6.594	-3247.611	-14.906	-21414.816618	1444927.520265	293-43-23	178-40-59	14.557
合計				倍面積	478.660200	-478.660200			62.142
				面 積	239.3301000	239.3301000			

面積（座標法）計算書

地 番： W146-2-1

測点名	[1] X(i)	[2] X(i+1)-X(i-1)	[3] Y(i)	[4] Y(i+1)-Y(i-1)	[2]*[3]	[1]*[4]	方向角	夾 角	距 離
W146-47	-96946.297	24.987	-3258.763	-2.893	-81426.047857	280505.017244	286-42-28	90-00-00	9.955
W146-44	-96943.435	-17.232	-3268.297	-15.563	56320.452226	1508742.098273	196-42-01	89-59-33	20.979
W146-3	-96963.529	-22.736	-3274.326	-4.606	74443.912311	446656.522222	151-42-01	135-00-00	3.000
W146-4	-96966.171	-4.893	-3272.904	8.922	16012.981474	-865141.540122	106-42-28	135-00-27	7.830
W146-46	-96968.422	19.874	-3265.404	14.141	-64895.956824	-1371217.438948	16-42-28	90-00-00	23.100
合計				倍面積	455.341330	-455.341330			64.864
				面 積	227.6706651	227.6706651			

面積（座標法）計算書

地 番： W146-2-2

測点名	[1] X(i)	[2] X(i+1)-X(i-1)	[3] Y(i)	[4] Y(i+1)-Y(i-1)	[2]*[3]	[1]*[4]	方向角	夾 角	距 離
W146-22	-96971.284	19.263	-3255.868	16.177	-62716.218856	-1568738.184055	16-42-28	90-00-00	23.100
W146-45	-96949.159	24.987	-3249.227	-2.895	-81189.617794	280697.415545	286-42-28	90-00-00	9.957
W146-47	-96946.297	-19.263	-3258.763	-16.177	62771.989735	1568333.954734	196-42-28	90-00-00	23.100
W146-46	-96968.422	-24.987	-3265.404	2.895	81593.847115	-280753.186424	106-42-28	90-00-00	9.957
合計				倍面積	460.000200	-460.000200			66.114
				面 積	230.0001001	230.0001001			

面積（座標法）計算書

地番：W146-3-1

測点名	[1] X(i)	[2] X(i+1)-X(i-1)	[3] Y(i)	[4] Y(i+1)-Y(i-1)	[2]*[3]	[1]*[4]	方向角	夾角	距離
W146-39	-96938.517	-12.942	-3246.032	-7.739	42009.551271	750242.509675	196-42-28	81-40-04	15.161
W146-48	-96953.038	-15.583	-3250.391	-0.823	50649.370910	79744.431393	106-42-28	90-00-00	3.692
W146-51	-96954.100	12.942	-3246.855	7.739	-42020.195989	-750363.108685	16-42-28	90-00-00	14.620
W146-38	-96940.097	15.583	-3242.652	0.823	-50528.771900	-79733.786676	295-02-24	98-19-56	3.731
合計				倍面積	109.954292	-109.954292			37.204
				面積	54.9771463	54.9771463			

面積（座標法）計算書

地番：W146-3-2

測点名	[1] X(i)	[2] X(i+1)-X(i-1)	[3] Y(i)	[4] Y(i+1)-Y(i-1)	[2]*[3]	[1]*[4]	方向角	夾角	距離
W146-48	-96953.038	-17.184	-3250.391	-9.013	55855.937981	873819.384925	196-42-28	90-00-00	19.050
W146-22	-96971.284	-19.307	-3255.868	-1.940	62861.688123	188172.510089	106-42-28	90-00-00	3.692
W146-23	-96972.346	17.184	-3252.332	9.013	-55889.284213	-873993.397064	16-42-28	90-00-00	19.050
W146-51	-96954.100	19.307	-3246.855	1.940	-62687.675983	-188139.163857	286-42-28	90-00-00	3.692
合計				倍面積	140.665906	-140.665906			45.484
				面積	70.3329535	70.3329535			

面 積 (座 標 法) 計 算 書

地 番 : W146-4-1

測点名	[1] X(i)	[2] X(i+1)-X(i-1)	[3] Y(i)	[4] Y(i+1)-Y(i-1)	[2]*[3]	[1]*[4]	方向角	夾 角	距 離
W146-38	-96940.097	-5.611	-3242.652	-22.169	18193.108308	2149026.311461	196-42-28	81-40-04	14.620
W146-51	-96954.100	-19.580	-3246.855	14.376	63573.166244	-1393799.625597	106-42-28	90-00-00	19.398
W146-49	-96959.677	5.611	-3228.276	22.169	-18112.451547	-2149460.370947	17-47-21	91-04-53	11.749
W146-50	-96948.489	19.580	-3224.686	-14.376	-63139.106757	1393718.968837	295-02-24	97-15-03	19.829
合計				倍面積	514.716247	-514.716247			65.596
				面 積	257.3581235	257.3581235			

面積（座標法）計算書

地 番： W146-4-2

測点名	[1] X(i)	[2] X(i+1)-X(i-1)	[3] Y(i)	[4] Y(i+1)-Y(i-1)	[2]*[3]	[1]*[4]	方向角	夾 角	距 離
W146-51	-96954.100	-12.669	-3246.855	-24.056	41134.705729	2332301.898140	196-42-28	90-00-00	19.050
W146-23	-96972.346	-28.342	-3252.332	28.159	92177.562809	-2730687.050083	106-42-28	90-00-00	35.119
W146-24	-96982.442	17.255	-3218.695	41.846	-55538.629023	-4058311.233339	16-42-28	90-00-00	28.557
W146-37	-96955.091	27.481	-3210.486	7.862	-88227.418997	-762278.907335	290-28-44	93-46-16	0.371
W146-10	-96954.961	6.601	-3210.833	-14.201	-21195.802799	1376816.664098	295-02-24	184-33-40	15.290
W146-50	-96948.489	-4.716	-3224.686	-17.443	15206.714687	1691028.673618	197-47-21	82-44-57	11.749
W146-49	-96959.677	-5.611	-3228.276	-22.169	18112.451547	2149460.370947	286-42-28	268-55-07	19.398
合計				倍面積	1669.583953	-1669.583953			129.534
				面 積	834.7919766	834.7919766			

面積（座標法）計算書

地番：W146-5

測点名	[1] X(i)	[2] X(i+1)-X(i-1)	[3] Y(i)	[4] Y(i+1)-Y(i-1)	[2]*[3]	[1]*[4]	方向角	夾角	距離
W146-37	-96955.091	-9.132	-3210.486	-4.069	29318.346809	394463.453665	196-42-28	86-13-44	10.000
W146-41	-96964.668	-9.943	-3213.361	-1.657	31951.581202	160685.708121	106-42-28	90-00-00	1.271
W146-42	-96965.034	9.132	-3212.143	4.069	-29333.480069	-394503.908372	16-42-28	90-00-00	9.916
W146-36	-96955.536	9.943	-3209.292	1.657	-31911.126496	-160670.574862	290-28-44	93-46-16	1.274
合計				倍面積	25.321446	-25.321446			22.461
				面積	12.6607235	12.6607235			

面積（座標法）計算書

地 番： W146-6

測点名	[1] X(i)	[2] X(i+1)-X(i-1)	[3] Y(i)	[4] Y(i+1)-Y(i-1)	[2]*[3]	[1]*[4]	方向角	夾 角	距 離
W146-36	-96955.536	-9.138	-3209.292	-3.814	29325.450287	369834.275664	196-42-28	86-13-44	9.916
W146-42	-96965.034	-10.158	-3212.143	-0.649	32630.025162	62970.974160	106-42-28	90-00-00	2.298
W146-43	-96965.695	8.698	-3209.941	5.010	-27919.134772	-485837.799115	16-42-28	90-00-00	9.771
W146-35	-96956.336	9.798	-3207.132	1.613	-31424.871807	-156400.450187	290-11-51	93-29-23	1.274
W146-C11	-96955.896	0.800	-3208.328	-2.160	-2566.226351	209387.756959	290-28-44	180-16-53	1.029
合計				倍面積 面 積	45.242519 22.6212596	-45.242519 22.6212596			24.288

面積（座標法）計算書

地 番： W146-7

測点名	[1] X(i)	[2] X(i+1)-X(i-1)	[3] Y(i)	[4] Y(i+1)-Y(i-1)	[2]*[3]	[1]*[4]	方向角	夾 角	距 離
W146-24	-96982.442	-21.803	-3218.695	8.091	70178.302662	-784702.829888	106-42-28	90-00-00	14.018
W146-25	-96986.472	22.553	-3205.269	21.405	-72288.665113	-2076014.825362	16-42-28	90-00-00	27.755
W146-34	-96959.889	27.631	-3197.290	5.021	-88343.510811	-486843.959269	289-30-13	92-47-45	3.138
W146-C9	-96958.841	2.508	-3200.248	-7.003	-8025.763460	678960.848335	289-51-02	180-20-49	4.300
W146-C10	-96957.381	2.505	-3204.293	-6.884	-8026.074739	667467.689503	290-11-51	180-20-49	3.026
W146-35	-96956.336	-8.314	-3207.132	-5.649	26663.535116	547675.200981	196-42-28	86-30-37	9.771
W146-43	-96965.695	-8.332	-3209.941	-6.228	26745.860403	603915.514536	286-42-28	270-00-00	3.570
W146-41	-96964.668	-16.747	-3213.361	-8.754	53814.478577	848824.198530	196-42-28	90-00-00	18.557
合計				倍面積	718.162633	-718.162633			84.135
				面 積	359.0813170	359.0813170			

面積（座標法）計算書

地 番： W146-8

測点名	[1] X(i)	[2] X(i+1)-X(i-1)	[3] Y(i)	[4] Y(i+1)-Y(i-1)	[2]*[3]	[1]*[4]	方向角	夾 角	距 離
W146-25	-96986.472	-32.175	-3205.269	10.649	103127.945438	-1032823.737930	106-42-28	90-00-00	19.449
W146-26	-96992.063	20.363	-3186.641	26.419	-64890.966969	-2562427.111105	16-42-28	90-00-00	27.099
W146-33	-96966.108	26.290	-3178.850	6.744	-83573.170617	-653919.973441	287-46-07	91-03-39	1.099
W146-C4	-96965.773	1.672	-3179.897	-5.134	-5318.317110	497790.570052	288-06-56	180-20-49	4.300
W146-C5	-96964.436	2.699	-3183.984	-8.166	-8592.804491	791765.524990	288-27-45	180-20-49	4.300
W146-C6	-96963.074	2.748	-3188.063	-8.149	-8761.312676	790155.067614	288-48-34	180-20-49	4.300
W146-C7	-96961.688	2.797	-3192.133	-8.132	-8929.879132	788515.482323	289-09-24	180-20-50	4.300
W146-C8	-96960.277	1.799	-3196.195	-5.157	-5749.791197	500031.176233	289-30-13	180-20-49	1.162
W146-34	-96959.889	-26.195	-3197.290	-9.074	83753.418958	879847.879058	196-42-28	87-12-15	27.755
合計				倍面積	1065.122201	-1065.122201			93.764
				面 積	532.5611010	532.5611010			

面積（座標法）計算書

地 番： W146-9

測点名	[1] X(i)	[2] X(i+1)-X(i-1)	[3] Y(i)	[4] Y(i+1)-Y(i-1)	[2]*[3]	[1]*[4]	方向角	夾 角	距 離
W146-26	-96992.063	-27.239	-3186.641	-3.511	86801.984251	340586.466143	106-42-28	90-00-00	4.468
W146-27	-96993.348	24.599	-3182.362	12.048	-78281.640339	-1168593.447196	16-42-28	90-00-00	27.024
W146-32	-96967.465	26.263	-3174.593	6.560	-83372.935571	-636061.449058	287-25-18	90-42-50	1.268
W146-C3	-96967.085	1.356	-3175.802	-4.258	-4307.381428	412842.969509	287-46-07	180-20-49	3.201
W146-33	-96966.108	-24.978	-3178.850	-10.839	79401.755287	1050983.678401	196-42-28	88-56-21	27.099
合計				倍面積 面 積	241.782199 120.8910998	-241.782199 120.8910998			63.060

面積（座標法）計算書

地番：W146-10

測点名	[1] X(i)	[2] X(i+1)-X(i-1)	[3] Y(i)	[4] Y(i+1)-Y(i-1)	[2]*[3]	[1]*[4]	方向角	夾角	距離
W146-27	-96993.348	-26.215	-3182.362	-6.662	83426.755482	646155.414386	106-42-28	90-00-00	1.156
W146-28	-96993.680	25.537	-3181.255	8.872	-81239.356535	-860537.405194	16-42-28	90-00-00	27.009
W146-31	-96967.811	26.215	-3173.490	6.662	-83194.170269	-645985.291372	287-25-18	90-42-50	1.156
W146-32	-96967.465	-25.537	-3174.593	-8.872	81069.233521	860304.819981	196-42-28	89-17-10	27.024
合計				倍面積	62.462198	-62.462198			56.345
				面積	31.2310995	31.2310995			

面積（座標法）計算書

地 番： W146-11

測点名	[1] X(i)	[2] X(i+1)-X(i-1)	[3] Y(i)	[4] Y(i+1)-Y(i-1)	[2]*[3]	[1]*[4]	方向角	夾 角	距 離
W146-28	-96993.680	-27.076	-3181.255	-3.746	86134.585418	363298.286268	106-42-28	90-00-00	4.196
W146-29	-96994.886	24.626	-3177.235	11.773	-78243.128573	-1141943.097095	16-42-28	90-00-00	26.971
W146-30	-96969.054	26.514	-3169.481	5.536	-84035.367503	-536798.136686	287-04-28	90-22-00	2.320
W146-C2	-96968.373	1.243	-3171.700	-4.008	-3942.612325	388680.761462	287-25-18	180-20-50	1.876
W146-31	-96967.811	-25.307	-3173.490	-9.555	80313.025183	926535.683850	196-42-28	89-17-10	27.009
合計				倍面積	226.502199	-226.502199			62.372
				面 積	113.2510999	113.2510999			

面積（座標法）計算書

地 番： W146-12

測点名	[1] X(i)	[2] X(i+1)-X(i-1)	[3] Y(i)	[4] Y(i+1)-Y(i-1)	[2]*[3]	[1]*[4]	方向角	夾 角	距 離
W146-29	-96994.886	-33.122	-3177.235	16.530	105235.210960	-1603314.793593	106-42-28	90-00-00	25.354
W146-5	-97002.175	-5.870	-3152.952	26.951	18506.870602	-2614266.403048	61-58-38	135-16-10	3.021
W146-6	-97000.756	17.120	-3150.285	7.376	-53934.380625	-715463.289000	16-41-42	134-43-04	16.392
W146-7	-96985.055	26.259	-3145.576	-0.994	-82600.844263	96395.279161	331-37-28	134-55-46	12.000
W146-8	-96974.497	14.182	-3151.279	-17.895	-44692.346998	1735396.090421	286-33-15	134-55-47	12.720
W146-9	-96970.873	4.862	-3163.471	-16.310	-15379.835002	1581638.008027	286-43-39	180-10-24	4.300
W146-C1	-96969.635	1.819	-3167.589	-6.010	-5761.406005	582822.047303	287-04-28	180-20-49	1.980
W146-30	-96969.054	-25.251	-3169.481	-9.646	80033.753533	935386.038529	196-42-28	89-38-00	26.971
合計				倍面積	1407.022199	-1407.022199			102.738
				面 積	703.5110999	703.5110999			