

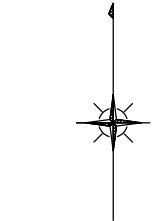
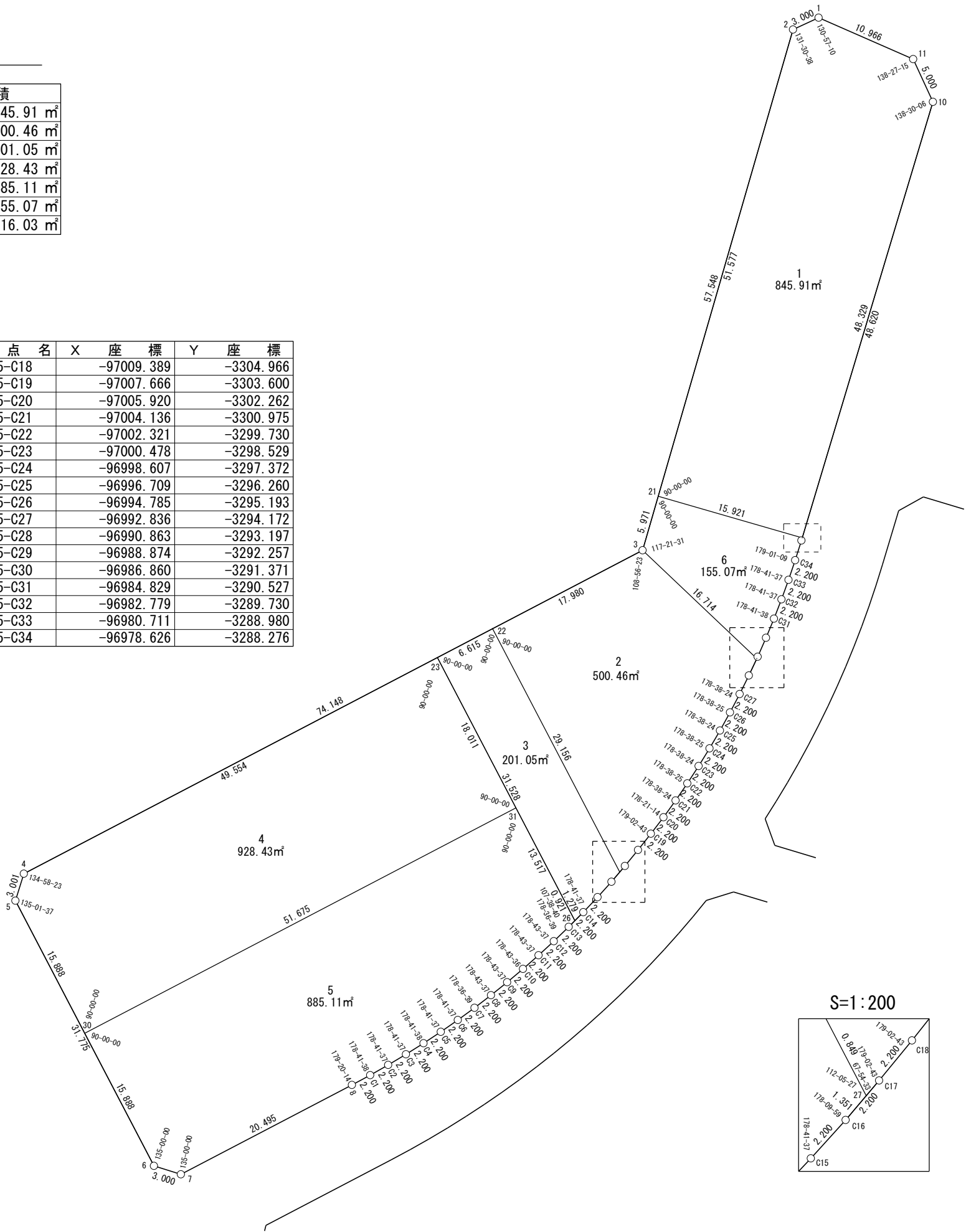
面積一覧表

地番名	地積
W145-1	845.91 m ²
W145-2	500.46 m ²
W145-3	201.05 m ²
W145-4	928.43 m ²
W145-5	885.11 m ²
W145-6	155.07 m ²
合計	3516.03 m ²

座 標 一 覧 表

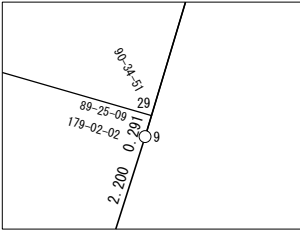
測 点 名	X 座 標	Y 座 標
W145-1	-96921.022	-3285.785
W145-2	-96922.282	-3288.507
W145-3	-96977.569	-3304.478
W145-4	-97011.909	-3370.195
W145-5	-97014.773	-3371.092
W145-6	-97042.935	-3356.376
W145-7	-97043.832	-3353.514
W145-8	-97034.341	-3335.349
W145-9	-96976.530	-3287.609
W145-10	-96929.959	-3273.643
W145-11	-96925.420	-3275.740
W145-21	-96971.833	-3302.821
W145-22	-96985.896	-3320.413
W145-23	-96988.959	-3326.276
W145-26	-97016.902	-3311.674
W145-27	-97011.737	-3306.910
W145-28	-96989.068	-3292.348
W145-29	-96976.251	-3287.525
W145-30	-97028.854	-3363.734
W145-31	-97004.922	-3317.935
W145-C1	-97033.299	-3333.411
W145-C2	-97032.214	-3331.498
W145-C3	-97031.086	-3329.609
W145-C4	-97029.914	-3327.747
W145-C5	-97028.701	-3325.912
W145-C6	-97027.446	-3324.106
W145-C7	-97026.150	-3322.328
W145-C8	-97024.812	-3320.582
W145-C9	-97023.435	-3318.867
W145-C10	-97022.020	-3317.182
W145-C11	-97020.568	-3315.530
W145-C12	-97019.080	-3313.910
W145-C13	-97017.556	-3312.323
W145-C14	-97015.994	-3310.774
W145-C15	-97014.398	-3309.261
W145-C16	-97012.767	-3307.784
W145-C17	-97011.090	-3306.361

測 点 名	X 座 標	Y 座 標
W145-C18	-97009.389	-3304.966
W145-C19	-97007.666	-3303.600
W145-C20	-97005.920	-3302.262
W145-C21	-97004.136	-3300.975
W145-C22	-97002.321	-3299.730
W145-C23	-97000.478	-3298.529
W145-C24	-96998.607	-3297.372
W145-C25	-96996.709	-3296.260
W145-C26	-96994.785	-3295.193
W145-C27	-96992.836	-3294.172
W145-C28	-96990.863	-3293.197
W145-C29	-96988.874	-3292.257
W145-C30	-96986.860	-3291.371
W145-C31	-96984.829	-3290.527
W145-C32	-96982.779	-3289.730
W145-C33	-96980.711	-3288.980
W145-C34	-96978.626	-3288.276

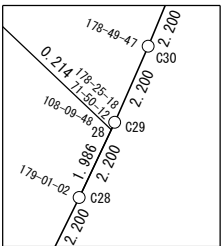


世界測地系

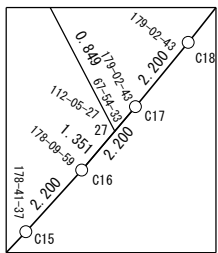
S=1:100



S=1:200



S=1:200



面積（座標法）計算書

地番：W145-1

測点名	[1] X(i)	[2] X(i+1)-X(i-1)	[3] Y(i)	[4] Y(i+1)-Y(i-1)	[2]*[3]	[1]*[4]	方向角	夾角	距離
W145-1	-96921.022	3.139	-3285.785	-12.767	-10312.867876	1237368.851492	245-09-35	131-30-38	3.000
W145-2	-96922.282	-50.811	-3288.507	-17.036	167092.863523	1651160.688384	196-06-45	130-57-10	51.577
W145-21	-96971.833	-53.970	-3302.821	0.982	178251.666175	-95185.580734	106-06-45	90-00-00	15.921
W145-29	-96976.251	41.874	-3287.525	29.178	-137662.370978	-2829587.356515	16-41-36	90-34-51	48.329
W145-10	-96929.959	50.831	-3273.643	11.785	-166402.177599	-1142338.470258	335-11-42	138-30-06	5.000
W145-11	-96925.420	8.937	-3275.740	-12.142	-29275.293044	1176890.047432	293-38-57	138-27-15	10.966
合計				倍面積	1691.820199	-1691.820199			134.793
				面積	845.9100997	845.9100997			

面積（座標法）計算書

地 番： W145-2

測点名	[1] X(i)	[2] X(i+1)-X(i-1)	[3] Y(i)	[4] Y(i+1)-Y(i-1)	[2]*[3]	[1]*[4]	方向角	夾 角	距 離
W145-3	-96977.569	3.172	-3304.478	-28.065	-10482.109563	2721684.354828	242-24-39	108-56-23	17.980
W145-22	-96985.896	-34.168	-3320.413	-2.432	113451.324524	235905.253776	152-24-39	90-00-00	29.156
W145-27	-97011.737	-25.194	-3306.910	14.052	83313.977486	-1363217.093204	40-19-12	67-54-33	0.849
W145-C17	-97011.090	2.347	-3306.361	1.944	-7761.562230	-188602.955743	39-21-55	179-02-43	2.200
W145-C18	-97009.389	3.424	-3304.966	2.762	-11316.119087	-267902.148053	38-24-38	179-02-43	2.200
W145-C19	-97007.666	3.470	-3303.600	2.704	-11461.885019	-262325.743454	37-27-21	179-02-43	2.200
W145-C20	-97005.920	3.530	-3302.262	2.625	-11657.725062	-254630.809710	35-48-35	178-21-14	2.200
W145-C21	-97004.136	3.598	-3300.975	2.532	-11878.394345	-245597.621647	34-26-59	178-38-24	2.200
W145-C22	-97002.321	3.658	-3299.730	2.446	-12068.836193	-237240.071093	33-05-24	178-38-25	2.200
W145-C23	-97000.478	3.715	-3298.529	2.358	-12252.496038	-228749.136647	31-43-48	178-38-24	2.200
W145-C24	-96998.607	3.769	-3297.372	2.269	-12429.285763	-220129.598532	30-22-13	178-38-25	2.200
W145-C25	-96996.709	3.822	-3296.260	2.179	-12599.121190	-211386.343196	29-00-37	178-38-24	2.200
W145-C26	-96994.785	3.873	-3295.193	2.088	-12761.920719	-202524.324463	27-39-02	178-38-25	2.200
W145-C27	-96992.836	3.921	-3294.172	1.995	-12917.605617	-193548.515001	26-17-26	178-38-24	2.200
W145-C28	-96990.863	3.768	-3293.197	1.823	-12407.934125	-176851.200121	25-18-28	179-01-02	1.986
W145-28	-96989.068	13.294	-3292.348	-11.281	-43769.369730	1094115.014945	313-28-16	108-09-48	16.714
合計				倍面積	1000.937321	-1000.937321			90.885
				面 積	500.4686610	500.4686610			

面積（座標法）計算書

地 番： W145-3

測点名	[1] X(i)	[2] X(i+1)-X(i-1)	[3] Y(i)	[4] Y(i+1)-Y(i-1)	[2]*[3]	[1]*[4]	方向角	夾 角	距 離
W145-22	-96985.896	22.777	-3320.413	-19.366	-75630.508333	1878187.048725	242-24-39	90-00-00	6.615
W145-23	-96988.959	-31.006	-3326.276	8.739	103135.758911	-847574.343314	152-24-39	90-00-00	31.528
W145-26	-97016.902	-27.035	-3311.674	15.502	89531.374598	-1503946.714636	44-45-59	72-21-20	1.279
W145-C14	-97015.994	2.505	-3310.774	2.414	-8292.235239	-234161.267530	43-27-36	178-41-37	2.200
W145-C15	-97014.398	3.228	-3309.261	2.990	-10681.032943	-290026.889435	42-09-13	178-41-37	2.200
W145-C16	-97012.767	2.661	-3307.784	2.351	-8801.585288	-228029.003059	40-19-12	178-09-59	1.351
W145-27	-97011.737	26.871	-3306.910	-12.629	-88859.670302	1225149.067850	332-24-39	112-05-27	29.156
合計				倍面積	402.101401	-402.101401			74.329
				面 積	201.0507007	201.0507007			

面積（座標法）計算書

地番：W145-4

測点名	[1] X(i)	[2] X(i+1)-X(i-1)	[3] Y(i)	[4] Y(i+1)-Y(i-1)	[2]*[3]	[1]*[4]	方向角	夾角	距離
W145-4	-97011.909	-25.814	-3370.195	-44.816	86996.782566	4347656.445156	197-23-02	134-58-23	3.001
W145-5	-97014.773	-16.945	-3371.092	6.461	57122.773202	-626845.844965	152-24-39	135-01-37	15.888
W145-30	-97028.854	9.851	-3363.734	53.157	-33136.087662	-5157749.662934	62-24-39	90-00-00	51.675
W145-31	-97004.922	39.895	-3317.935	37.458	-132367.593843	-3633585.895170	332-24-39	90-00-00	18.011
W145-23	-96988.959	-6.987	-3326.276	-52.260	23241.003198	5068668.080452	242-24-39	90-00-00	49.554
合計				倍面積	1856.877461	-1856.877461			138.129
				面積	928.4387309	928.4387309			

面積（座標法）計算書

地番：W145-5

測点名	[1] X(i)	[2] X(i+1)-X(i-1)	[3] Y(i)	[4] Y(i+1)-Y(i-1)	[2]*[3]	[1]*[4]	方向角	夾角	距離
W145-30	-97028.854	-38.013	-3363.734	-38.441	127865.547460	3729882.645282	152-24-39	90-00-00	15.888
W145-6	-97042.935	-14.979	-3356.376	10.220	50273.579151	-991785.408016	107-24-39	135-00-00	3.000
W145-7	-97043.832	8.594	-3353.514	21.027	-28820.806766	-2040500.361972	62-24-39	135-00-00	20.495
W145-8	-97034.341	10.533	-3335.349	20.102	-35131.356934	-1950609.331687	61-44-53	179-20-14	2.200
W145-C1	-97033.299	2.126	-3333.411	3.851	-7088.470038	-373708.149613	60-26-31	178-41-38	2.200
W145-C2	-97032.214	2.214	-3331.498	3.802	-7375.064741	-368902.913220	59-08-08	178-41-37	2.200
W145-C3	-97031.086	2.300	-3329.609	3.750	-7657.551895	-363905.868750	57-49-45	178-41-37	2.200
W145-C4	-97029.914	2.385	-3327.747	3.697	-7935.798794	-358719.641859	56-31-23	178-41-38	2.200
W145-C5	-97028.701	2.468	-3325.912	3.642	-8209.674178	-353346.936158	55-13-00	178-41-37	2.200
W145-C6	-97027.446	2.551	-3324.106	3.584	-8479.049194	-347790.542882	53-54-37	178-41-37	2.200
W145-C7	-97026.150	2.634	-3322.328	3.523	-8752.028098	-341859.162423	52-31-16	178-36-39	2.200
W145-C8	-97024.812	2.715	-3320.582	3.461	-9016.803700	-335821.938477	51-14-53	178-43-37	2.200
W145-C9	-97023.435	2.792	-3318.867	3.400	-9265.149528	-329880.599710	49-58-30	178-43-37	2.200
W145-C10	-97022.020	2.867	-3317.182	3.337	-9508.750683	-323776.432453	48-42-06	178-43-36	2.200
W145-C11	-97020.568	2.940	-3315.530	3.273	-9747.500866	-317512.460877	47-25-43	178-43-37	2.200
W145-C12	-97019.080	3.012	-3313.910	3.207	-9981.296936	-311091.806244	46-09-20	178-43-37	2.200
W145-C13	-97017.556	2.178	-3312.323	2.235	-7213.540811	-216854.679813	44-45-59	178-36-39	0.921
W145-26	-97016.902	12.634	-3311.674	-5.612	-41840.835272	544417.075053	332-24-39	107-38-40	13.517
W145-31	-97004.922	-11.952	-3317.935	-52.059	39654.777964	5049996.287690	242-24-39	90-00-00	51.675
合計				倍面積	1770.226134	-1770.226134			134.096
				面積	885.1130672	885.1130672			

面積（座標法）計算書

地 番： W145-6

測点名	[1] X(i)	[2] X(i+1)-X(i-1)	[3] Y(i)	[4] Y(i+1)-Y(i-1)	[2]*[3]	[1]*[4]	方向角	夾 角	距 離
W145-21	-96971.833	-1.318	-3302.821	-16.952	4351.654347	1643910.237371	196-06-45	90-00-00	5.971
W145-3	-96977.569	-17.235	-3304.478	10.473	56952.776638	-1015621.326723	133-28-16	117-21-31	16.714
W145-28	-96989.068	-11.305	-3292.348	12.221	37220.777898	-1185337.597868	25-18-28	71-50-12	0.214
W145-C29	-96988.874	2.207	-3292.257	0.977	-7267.538137	-94739.440293	23-43-46	178-25-18	2.200
W145-C30	-96986.860	4.045	-3291.371	1.729	-13314.197591	-167700.930952	22-33-33	178-49-47	2.200
W145-C31	-96984.829	4.082	-3290.527	1.641	-13431.125835	-159186.873405	21-15-11	178-41-38	2.200
W145-C32	-96982.779	4.118	-3289.730	1.548	-13547.477349	-150117.635667	19-56-48	178-41-37	2.200
W145-C33	-96980.711	4.152	-3288.980	1.454	-13656.926188	-140970.724894	18-38-25	178-41-37	2.200
W145-C34	-96978.626	4.181	-3288.276	1.371	-13747.613665	-132912.018906	17-39-34	179-01-09	2.200
W145-9	-96976.530	2.375	-3287.609	0.751	-7808.234017	-72827.425820	16-41-36	179-02-02	0.291
W145-29	-96976.251	4.697	-3287.525	-15.212	-15441.954632	1475193.595694	286-06-45	89-25-09	15.921
合計				倍面積	310.141466	-310.141466			52.311
				面 積	155.0707332	155.0707332			