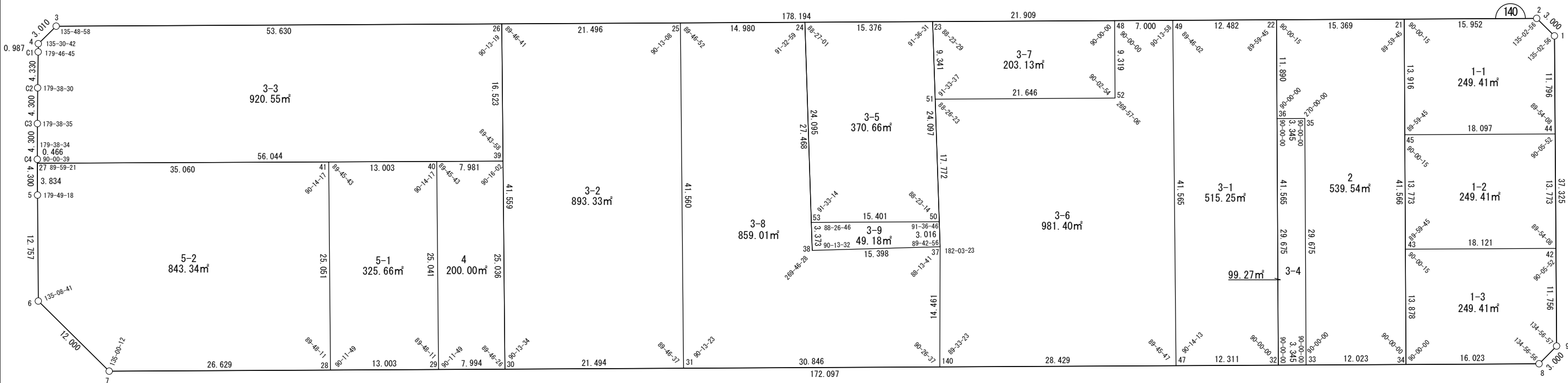


地番	面積	地番	面積
W140-1-1	249.41㎡	W140-3-6	981.40㎡
W140-1-2	249.41㎡	W140-3-7	203.13㎡
W140-1-3	249.41㎡	W140-3-8	859.01㎡
W140-2	539.54㎡	W140-3-9	49.18㎡
W140-3-1	515.25㎡	W140-4	200.00㎡
W140-3-2	893.33㎡	W140-5-1	325.66㎡
W140-3-3	920.55㎡	W140-5-2	843.34㎡
W140-3-4	99.27㎡	合計	7548.55㎡
W140-3-5	370.66㎡		



世界測地系



座 標 一 覧 表

測点名	X座標	Y座標
W140-1	-96771.507	-3122.712
W140-2	-96772.931	-3125.352
W140-3	-96943.612	-3176.553
W140-4	-96946.282	-3175.164
W140-5	-96951.702	-3157.773
W140-6	-96955.336	-3145.544
W140-7	-96949.647	-3134.979
W140-8	-96784.810	-3085.518
W140-9	-96782.170	-3086.943
W140-21	-96788.211	-3129.936
W140-22	-96802.932	-3134.352
W140-23	-96842.577	-3146.245
W140-24	-96857.305	-3150.663

測点名	X座標	Y座標
W140-25	-96871.654	-3154.967
W140-26	-96892.243	-3161.143
W140-27	-96950.598	-3161.444
W140-28	-96924.141	-3127.325
W140-29	-96911.687	-3123.588
W140-30	-96904.030	-3121.291
W140-31	-96883.443	-3115.114
W140-32	-96814.877	-3094.540
W140-33	-96811.673	-3093.579
W140-34	-96800.157	-3090.123
W140-35	-96803.145	-3122.002
W140-36	-96806.349	-3122.963
W140-37	-96849.635	-3120.067

測点名	X座標	Y座標
W140-38	-96864.483	-3124.149
W140-39	-96896.930	-3145.299
W140-40	-96904.573	-3147.598
W140-41	-96917.024	-3151.344
W140-42	-96778.812	-3098.209
W140-43	-96796.169	-3103.415
W140-44	-96774.877	-3111.407
W140-45	-96792.210	-3116.607
W140-47	-96826.669	-3098.078
W140-48	-96821.592	-3139.950
W140-49	-96814.888	-3137.938
W140-50	-96848.850	-3122.979
W140-51	-96845.009	-3137.226

測点名	X座標	Y座標
W140-52	-96824.270	-3131.024
W140-53	-96863.601	-3127.405
W140-140	-96853.898	-3106.249
W140-C1	-96946.587	-3174.226
W140-C2	-96947.911	-3170.103
W140-C3	-96949.200	-3166.001
W140-C4	-96950.464	-3161.891

株式会社
オオバ
名古屋支店

豊田浄水特定土地区画整理組合

面積（座標法）計算書

地 番： W140-1-1

測点名	[1] X(i)	[2] X(i+1)-X(i-1)	[3] Y(i)	[4] Y(i+1)-Y(i-1)	[2]*[3]	[1]*[4]	方向角	夾 角	距 離
W140-44	-96774.877	20.704	-3111.407	-6.105	-64417.595058	590803.874023	286-36-01	89-54-08	11.796
W140-1	-96771.507	1.945	-3122.712	-13.945	-6075.225711	1349459.995802	241-38-57	135-02-56	3.000
W140-2	-96772.931	-16.704	-3125.352	-7.224	52206.895768	699064.555968	196-41-53	135-02-56	15.952
W140-21	-96788.211	-19.279	-3129.936	8.745	60342.271340	-846422.541814	106-42-08	90-00-15	13.916
W140-45	-96792.210	13.334	-3116.607	18.528	-41557.524533	-1793404.705785	16-41-53	89-59-45	18.097
合計				倍面積	498.821805	-498.821805			62.761
				面 積	249.4109026	249.4109026			

面積（座標法）計算書

地番：W140-1-2

測点名	[1] X(i)	[2] X(i+1)-X(i-1)	[3] Y(i)	[4] Y(i+1)-Y(i-1)	[2]*[3]	[1]*[4]	方向角	夾角	距離
W140-42	-96778.812	21.292	-3098.209	-7.992	-65966.592672	773460.535792	286-36-01	89-54-08	13.773
W140-44	-96774.877	-13.399	-3111.407	-18.399	41689.109373	1780512.992062	196-41-53	90-05-52	18.097
W140-45	-96792.210	-21.292	-3116.607	7.992	66358.330854	-773567.619549	106-42-08	90-00-15	13.773
W140-43	-96796.169	13.399	-3103.415	18.399	-41582.025616	-1780904.730245	16-41-53	89-59-45	18.121
合計				倍面積	498.821939	-498.821939			63.764
				面積	249.4109699	249.4109699			

面積（座標法）計算書

地 番： W140-1-3

測点名	[1] X(i)	[2] X(i+1)-X(i-1)	[3] Y(i)	[4] Y(i+1)-Y(i-1)	[2]*[3]	[1]*[4]	方向角	夾 角	距 離
W140-8	-96784.810	17.987	-3085.518	3.180	-55499.044425	-307811.497618	331-39-04	134-56-56	3.000
W140-9	-96782.170	5.999	-3086.943	-12.690	-18517.878330	1228205.892160	286-36-01	134-56-57	11.756
W140-42	-96778.812	-13.999	-3098.209	-16.473	43370.300718	1594203.888946	196-41-53	90-05-52	18.121
W140-43	-96796.169	-21.346	-3103.415	8.086	66243.954348	-782648.478567	106-42-08	90-00-15	13.878
W140-34	-96800.157	11.358	-3090.123	17.897	-35098.510370	-1732448.626861	16-42-08	90-00-00	16.023
合計				倍面積	498.821940	-498.821940			62.778
				面 積	249.4109701	249.4109701			

面積（座標法）計算書

地 番： W140-2

測点名	[1] X(i)	[2] X(i+1)-X(i-1)	[3] Y(i)	[4] Y(i+1)-Y(i-1)	[2]*[3]	[1]*[4]	方向角	夾 角	距 離
W140-21	-96788.211	-2.775	-3129.936	-44.229	8684.195537	4280807.475987	196-41-53	89-59-45	15.369
W140-22	-96802.932	-18.138	-3134.352	6.973	56850.421863	-674982.622200	106-42-08	90-00-15	11.890
W140-36	-96806.349	-0.213	-3122.963	12.350	665.391954	-1195563.955502	16-42-08	90-00-00	3.345
W140-35	-96803.145	-5.324	-3122.002	29.384	16622.641331	-2844510.485621	106-42-08	270-00-00	29.675
W140-33	-96811.673	2.988	-3093.579	31.879	-9242.451372	-3086215.465211	16-42-08	90-00-00	12.023
W140-34	-96800.157	23.462	-3090.123	-36.357	-72501.118468	3519385.971703	286-42-08	90-00-00	41.566
合計				倍面積	1079.080845	-1079.080845			113.868
				面 積	539.5404229	539.5404229			

面積（座標法）計算書

地番：W140-3-1

測点名	[1] X(i)	[2] X(i+1)-X(i-1)	[3] Y(i)	[4] Y(i+1)-Y(i-1)	[2]*[3]	[1]*[4]	方向角	夾角	距離
W140-49	-96814.888	-23.737	-3137.938	36.274	74484.959176	-3511830.976203	106-27-55	89-46-02	41.565
W140-47	-96826.669	0.010	-3098.078	43.398	-31.770058	-4202105.950270	16-42-08	90-14-13	12.311
W140-32	-96814.877	23.737	-3094.540	-36.274	-73454.819318	3511830.604225	286-42-08	90-00-00	41.565
W140-22	-96802.932	-0.010	-3134.352	-43.398	32.142036	4201075.810412	196-41-53	89-59-45	12.482
合計				倍面積	1030.511835	-1030.511835			107.923
				面積	515.2559180	515.2559180			

面積（座標法）計算書

地 番： W140-3-2

測点名	[1] X(i)	[2] X(i+1)-X(i-1)	[3] Y(i)	[4] Y(i+1)-Y(i-1)	[2]*[3]	[1]*[4]	方向角	夾 角	距 離
W140-25	-96871.654	-8.801	-3154.967	-46.030	27765.811167	4458987.538747	196-41-53	90-13-08	21.496
W140-26	-96892.243	-32.377	-3161.143	33.676	102347.287540	-3262935.595178	106-28-34	89-46-41	41.559
W140-30	-96904.030	8.801	-3121.291	46.030	-27469.440616	-4460477.831815	16-42-08	90-13-34	21.494
W140-31	-96883.443	32.377	-3115.114	-33.676	-100856.994472	3262639.224626	286-28-45	89-46-37	41.560
合計				倍面積	1786.663619	-1786.663619			126.109
				面 積	893.3318097	893.3318097			

面積（座標法）計算書

地 番： W140-3-3

測点名	[1] X(i)	[2] X(i+1)-X(i-1)	[3] Y(i)	[4] Y(i+1)-Y(i-1)	[2]*[3]	[1]*[4]	方向角	夾 角	距 離
W140-3	-96943.612	-54.038	-3176.553	-14.020	171654.717875	1359175.201628	152-30-51	135-48-58	3.010
W140-4	-96946.282	-2.975	-3175.164	2.327	9446.915311	-225611.476542	108-01-33	135-30-42	0.987
W140-C1	-96946.587	-1.629	-3174.226	5.061	5171.747337	-490618.299574	107-48-18	179-46-45	4.330
W140-C2	-96947.911	-2.613	-3170.103	8.225	8284.223766	-797374.801748	107-26-48	179-38-30	4.300
W140-C3	-96949.200	-2.553	-3166.001	8.212	8082.307124	-796176.846233	107-05-23	179-38-35	4.300
W140-C4	-96950.464	-1.398	-3161.891	4.557	4420.024054	-441782.001714	106-43-57	179-38-34	0.466
W140-27	-96950.598	53.534	-3161.444	16.592	-169244.498441	-1608610.147907	16-44-36	90-00-39	56.044
W140-39	-96896.930	58.354	-3145.299	0.301	-183542.222883	-29127.246151	286-28-34	89-43-58	16.523
W140-26	-96892.243	-46.682	-3161.143	-31.254	147567.886234	3028284.517866	196-41-53	90-13-19	53.630
合計				倍面積	1841.100378	-1841.100378			143.590
				面 積	920.5501890	920.5501890			

面積（座標法）計算書

地番：W140-3-4

測点名	[1] X(i)	[2] X(i+1)-X(i-1)	[3] Y(i)	[4] Y(i+1)-Y(i-1)	[2]*[3]	[1]*[4]	方向角	夾角	距離
W140-32	-96814.877	-5.324	-3094.540	29.384	16476.425938	-2844855.244570	16-42-08	90-00-00	3.345
W140-33	-96811.673	11.733	-3093.579	-27.462	-36295.989103	2658605.642923	286-42-08	90-00-00	29.675
W140-35	-96803.145	5.324	-3122.002	-29.384	-16622.641331	2844510.485621	196-42-08	90-00-00	3.345
W140-36	-96806.349	-11.733	-3122.963	27.462	36640.748051	-2658459.427530	106-42-08	90-00-00	29.675
合計				倍面積	198.543555	-198.543555			66.040
				面積	99.2717779	99.2717779			

面積（座標法）計算書

地番：W140-3-5

測点名	[1] X(i)	[2] X(i+1)-X(i-1)	[3] Y(i)	[4] Y(i+1)-Y(i-1)	[2]*[3]	[1]*[4]	方向角	夾角	距離
W140-23	-96842.577	-8.455	-3146.245	-27.684	26600.396980	2680995.912949	196-41-53	91-36-31	15.376
W140-24	-96857.305	-21.024	-3150.663	18.840	66240.201864	-1824779.860856	105-08-54	88-27-01	24.095
W140-53	-96863.601	8.455	-3127.405	27.684	-26441.112400	-2681577.948569	16-42-08	91-33-14	15.401
W140-50	-96848.850	21.024	-3122.979	-18.840	-65658.166243	1824620.576277	285-05-22	88-23-14	24.097
合計				倍面積	741.320200	-741.320200			78.969
				面積	370.6601000	370.6601000			

面積（座標法）計算書

地 番： W140-3-6

測点名	[1] X(i)	[2] X(i+1)-X(i-1)	[3] Y(i)	[4] Y(i+1)-Y(i-1)	[2]*[3]	[1]*[4]	方向角	夾 角	距 離
W140-49	-96814.888	5.076	-3137.938	-41.872	-15928.429737	4053786.622324	196-41-53	90-13-58	7.000
W140-48	-96821.592	-9.382	-3139.950	6.914	29460.043488	-669458.054534	106-41-53	90-00-00	9.319
W140-52	-96824.270	-23.416	-3131.024	2.724	73317.150511	-263708.399473	196-38-59	269-57-06	21.646
W140-51	-96845.009	-25.365	-3137.226	10.957	79576.791148	-1061146.866765	105-05-22	88-26-23	17.772
W140-37	-96849.635	-8.890	-3120.067	30.977	27736.270002	-3000153.238143	107-08-45	182-03-23	14.461
W140-140	-96853.898	22.967	-3106.249	21.989	-71340.470363	-2129691.608105	16-42-08	89-33-23	28.429
W140-47	-96826.669	39.011	-3098.078	-31.690	-120858.542089	3068408.731737	286-27-55	89-45-47	41.565
合計				倍面積	1962.812959	-1962.812959			140.192
				面 積	981.4064797	981.4064797			

面積（座標法）計算書

地番：W140-3-7

測点名	[1] X(i)	[2] X(i+1)-X(i-1)	[3] Y(i)	[4] Y(i+1)-Y(i-1)	[2]*[3]	[1]*[4]	方向角	夾角	距離
W140-48	-96821.592	-18.307	-3139.950	-15.221	57483.836148	1473686.128827	196-41-53	90-00-00	21.909
W140-23	-96842.577	-23.416	-3146.245	2.724	73673.562218	-263758.260681	105-05-22	88-23-29	9.341
W140-51	-96845.009	18.307	-3137.226	15.221	-57433.974940	-1474042.540534	16-38-59	91-33-37	21.646
W140-52	-96824.270	23.416	-3131.024	-2.724	-73317.150511	263708.399473	286-41-53	90-02-54	9.319
合計				倍面積	406.272914	-406.272914			62.215
				面積	203.1364572	203.1364572			

面積（座標法）計算書

地 番： W140-3-8

測点名	[1] X(i)	[2] X(i+1)-X(i-1)	[3] Y(i)	[4] Y(i+1)-Y(i-1)	[2]*[3]	[1]*[4]	方向角	夾 角	距 離
W140-24	-96857.305	-7.171	-3150.663	-30.818	22592.780760	2984918.183338	196-41-53	91-32-59	14.980
W140-25	-96871.654	-26.138	-3154.967	35.549	82464.283727	-3443691.343481	106-28-45	89-46-52	41.560
W140-31	-96883.443	17.755	-3115.114	48.718	-55309.271394	-4719995.904589	16-42-08	90-13-23	30.846
W140-140	-96853.898	33.808	-3106.249	-4.953	-105014.529844	479738.405391	287-08-45	90-26-37	14.461
W140-37	-96849.635	-10.584	-3120.067	-17.901	33023.832089	1733667.036015	195-22-26	88-13-41	15.398
W140-38	-96864.483	-7.670	-3124.149	-30.596	23960.931353	2963645.596634	285-08-54	269-46-28	27.468
合計				倍面積	1718.026691	-1718.026691			144.713
				面 積	859.0133458	859.0133458			

面積（座標法）計算書

地番：W140-3-9

測点名	[1] X(i)	[2] X(i+1)-X(i-1)	[3] Y(i)	[4] Y(i+1)-Y(i-1)	[2]*[3]	[1]*[4]	方向角	夾角	距離
W140-53	-96863.601	-15.633	-3127.405	-1.171	48889.296053	113396.340016	105-08-54	88-26-46	3.373
W140-38	-96864.483	13.966	-3124.149	7.338	-43632.260084	-710784.101610	15-22-26	90-13-32	15.398
W140-37	-96849.635	15.633	-3120.067	1.171	-48774.585642	-113379.990144	285-05-22	89-42-56	3.016
W140-50	-96848.850	-13.966	-3122.979	-7.338	43615.910212	710669.391199	196-42-08	91-36-46	15.401
合計				倍面積	98.360539	-98.360539			37.188
				面積	49.1802696	49.1802696			

面積（座標法）計算書

地番：W140-4

測点名	[1] X(i)	[2] X(i+1)-X(i-1)	[3] Y(i)	[4] Y(i+1)-Y(i-1)	[2]*[3]	[1]*[4]	方向角	夾角	距離
W140-29	-96911.687	0.543	-3123.588	26.307	-1694.899101	-2549453.914632	16-42-08	90-11-49	7.994
W140-30	-96904.030	14.757	-3121.291	-21.710	-46062.390087	2103798.038171	286-28-34	89-46-26	25.036
W140-39	-96896.930	-0.543	-3145.299	-26.307	1706.679290	2549065.689878	196-44-36	90-16-02	7.981
W140-40	-96904.573	-14.757	-3147.598	21.710	46450.614841	-2103809.818359	106-30-19	89-45-43	25.041
合計				倍面積	400.004942	-400.004942			66.052
				面積	200.0024712	200.0024712			

面積（座標法）計算書

地番：W140-5-1

測点名	[1] X(i)	[2] X(i+1)-X(i-1)	[3] Y(i)	[4] Y(i+1)-Y(i-1)	[2]*[3]	[1]*[4]	方向角	夾角	距離
W140-28	-96924.141	5.337	-3127.325	27.755	-16690.635495	-2690158.967048	16-42-08	90-11-49	13.003
W140-29	-96911.687	19.568	-3123.588	-20.273	-61123.618889	1964646.346568	286-30-19	89-48-11	25.041
W140-40	-96904.573	-5.337	-3147.598	-27.755	16798.830704	2689615.840257	196-44-36	90-14-17	13.003
W140-41	-96917.024	-19.568	-3151.344	20.273	61666.745681	-1964754.541777	106-30-19	89-45-43	25.051
合計				倍面積	651.322000	-651.322000			76.098
				面積	325.6610000	325.6610000			

面積（座標法）計算書

地 番： W140-5-2

測点名	[1] X(i)	[2] X(i+1)-X(i-1)	[3] Y(i)	[4] Y(i+1)-Y(i-1)	[2]*[3]	[1]*[4]	方向角	夾 角	距 離
W140-41	-96917.024	-26.457	-3151.344	-34.119	83374.100561	3306674.773414	196-44-36	90-14-17	35.060
W140-27	-96950.598	-34.677	-3161.444	-6.429	109630.656687	623290.410955	106-43-57	89-59-21	3.834
W140-5	-96951.702	-4.738	-3157.773	15.900	14962.967874	-1541493.876828	106-33-15	179-49-18	12.757
W140-6	-96955.336	2.055	-3145.544	22.794	-6462.925536	-2210016.323481	61-41-56	135-08-41	12.000
W140-7	-96949.647	31.195	-3134.979	18.219	-97796.089834	-1766326.608167	16-42-08	135-00-12	26.629
W140-28	-96924.141	32.623	-3127.325	-16.365	-102022.019569	1586184.933923	286-30-19	89-48-11	25.051
合計				倍面積	1686.690183	-1686.690183			115.331
				面 積	843.3450917	843.3450917			