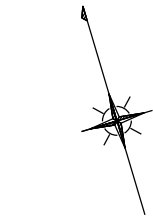
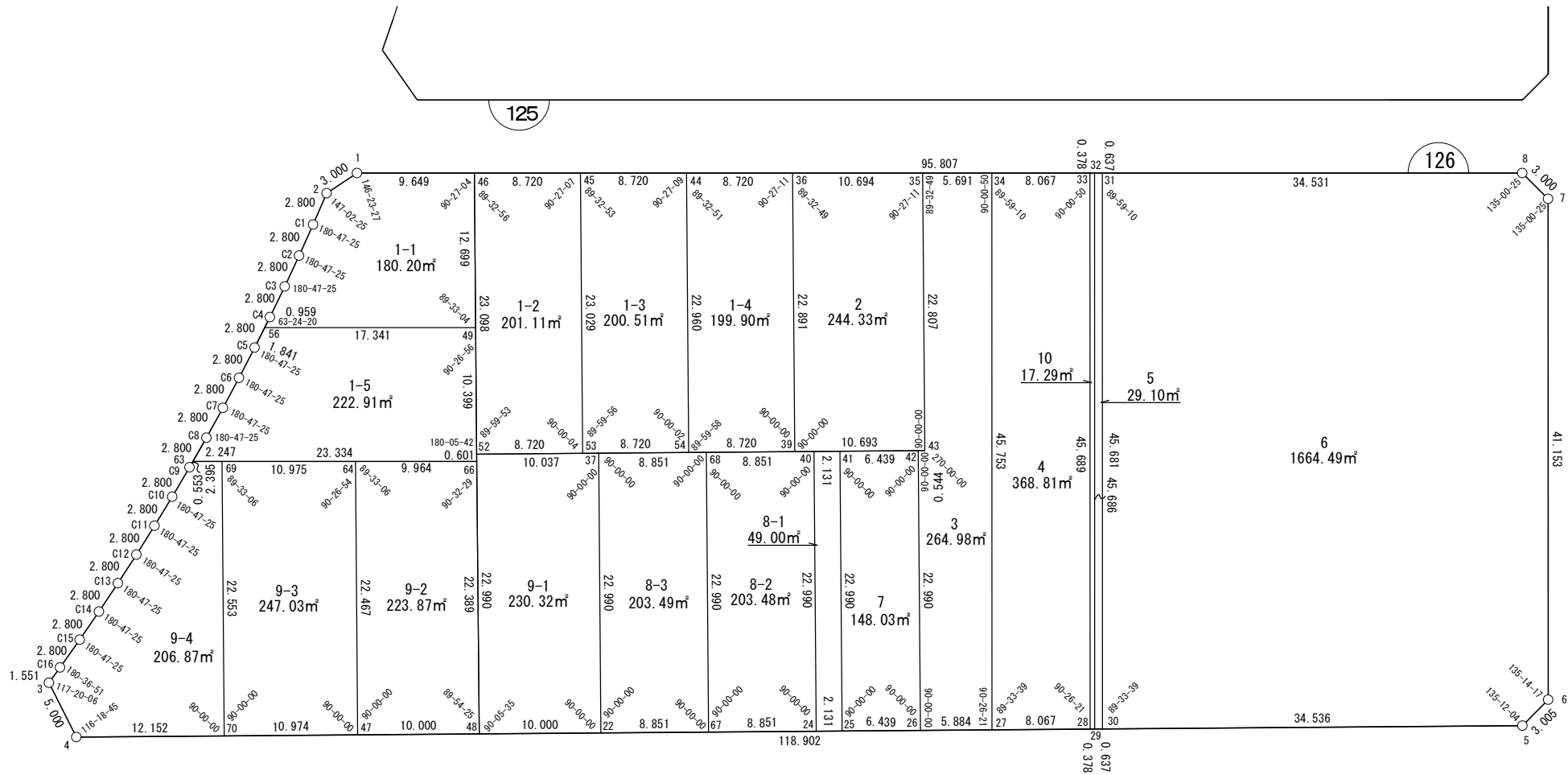


面積一覧表

地番名	面積
W126-1-1	180.20 m ²
W126-1-2	201.11 m ²
W126-1-3	200.51 m ²
W126-1-4	199.90 m ²
W126-1-5	222.91 m ²
W126-2	244.33 m ²
W126-3	264.98 m ²
W126-4	368.81 m ²
W126-5	29.10 m ²
W126-6	1664.49 m ²
W126-7	148.03 m ²
W126-8-1	49.00 m ²
W126-9-1	230.32 m ²
W126-9-2	223.87 m ²
W126-8-3	203.49 m ²
W126-8-2	203.48 m ²
W126-9-4	206.87 m ²
W126-9-3	247.03 m ²
W126-10	17.29 m ²
合計	5105.72 m ²



世界測地系



座 標 一 覧 表

測 点 名	X 座 標	Y 座 標
W126-1	-97247.556	-3201.349
W126-2	-97248.436	-3204.217
W126-3	-97280.488	-3237.560
W126-4	-97285.408	-3236.674
W126-5	-97318.384	-3122.437
W126-6	-97316.941	-3119.800
W126-7	-97277.491	-3108.084
W126-8	-97274.854	-3109.514
W126-22	-97297.369	-3195.239
W126-24	-97302.278	-3178.232
W126-25	-97302.870	-3176.184
W126-26	-97304.655	-3169.998
W126-27	-97306.287	-3164.344
W126-28	-97308.524	-3156.594
W126-29	-97308.629	-3156.230
W126-30	-97308.806	-3155.618
W126-31	-97265.015	-3142.613
W126-32	-97264.834	-3143.224
W126-33	-97264.726	-3143.587

測 点 名	X 座 標	Y 座 標
W126-34	-97262.427	-3151.319
W126-35	-97260.806	-3156.774
W126-36	-97257.759	-3167.025
W126-37	-97275.281	-3188.863
W126-39	-97279.752	-3173.373
W126-40	-97280.190	-3171.856
W126-41	-97280.781	-3169.808
W126-42	-97282.567	-3163.622
W126-43	-97282.718	-3163.099
W126-44	-97255.274	-3175.383
W126-45	-97252.790	-3183.742
W126-46	-97250.305	-3192.100
W126-47	-97291.822	-3214.455
W126-48	-97294.596	-3204.847
W126-49	-97262.506	-3195.623
W126-52	-97272.497	-3198.507
W126-53	-97274.915	-3190.129
W126-54	-97277.334	-3181.751
W126-56	-97257.565	-3212.245

測 点 名	X 座 標	Y 座 標
W126-63	-97266.428	-3221.040
W126-64	-97270.236	-3208.224
W126-66	-97273.075	-3198.673
W126-67	-97299.824	-3186.735
W126-68	-97277.736	-3180.359
W126-69	-97267.110	-3218.744
W126-70	-97288.779	-3224.999
W126-C1	-97250.581	-3206.016
W126-C2	-97252.702	-3207.845
W126-C3	-97254.797	-3209.703
W126-C4	-97256.866	-3211.589
W126-C5	-97258.908	-3213.504
W126-C6	-97260.925	-3215.447
W126-C7	-97262.914	-3217.417
W126-C8	-97264.876	-3219.415
W126-C9	-97266.810	-3221.439
W126-C10	-97268.716	-3223.491
W126-C11	-97270.594	-3225.568
W126-C12	-97272.443	-3227.670

測 点 名	X 座 標	Y 座 標
W126-C13	-97274.262	-3229.799
W126-C14	-97276.052	-3231.952
W126-C15	-97277.812	-3234.129
W126-C16	-97279.542	-3236.331

面積（座標法）計算書

地番：W126-1-1

測点名	[1] X(i)	[2] X(i+1)-X(i-1)	[3] Y(i)	[4] Y(i+1)-Y(i-1)	[2]*[3]	[1]*[4]	方向角	夾角	距離
W126-1	-97247.556	1.869	-3201.349	-12.117	-5984.497209	1178324.038701	252-56-43	146-23-27	3.000
W126-2	-97248.436	-3.025	-3204.217	-4.667	9693.310940	453876.976057	219-59-08	147-02-25	2.800
W126-C1	-97250.581	-4.266	-3206.016	-3.628	13675.923006	352816.793809	220-46-33	180-47-25	2.800
W126-C2	-97252.702	-4.215	-3207.845	-3.686	13521.906067	358512.825923	221-33-58	180-47-25	2.800
W126-C3	-97254.797	-4.164	-3209.703	-3.744	13365.251209	364140.806077	222-21-23	180-47-25	2.800
W126-C4	-97256.866	-2.769	-3211.589	-2.542	8892.611548	247266.043557	223-08-48	180-47-25	0.959
W126-56	-97257.565	-5.640	-3212.245	15.967	18117.347606	-1552874.107882	106-33-08	63-24-20	17.341
W126-49	-97262.506	7.260	-3195.623	20.145	-23200.765613	-1959333.869864	16-06-12	89-33-04	12.699
W126-46	-97250.305	14.950	-3192.100	-5.727	-47720.686290	556910.092353	286-33-16	90-27-04	9.649
合計				倍面積	360.401267	-360.401267			54.848
				面積	180.2006336	180.2006336			

面積（座標法）計算書

地番：W126-1-2

測点名	[1] X(i)	[2] X(i+1)-X(i-1)	[3] Y(i)	[4] Y(i+1)-Y(i-1)	[2]*[3]	[1]*[4]	方向角	夾角	距離
W126-46	-97250.305	-19.707	-3192.100	-14.765	62907.593257	1435928.225715	196-06-12	89-32-56	23.098
W126-52	-97272.497	-24.610	-3198.507	1.971	78715.887923	-191744.533975	106-06-05	89-59-53	8.720
W126-53	-97274.915	19.707	-3190.129	14.765	-62868.746080	-1436291.602222	16-06-09	90-00-04	23.029
W126-45	-97252.790	24.610	-3183.742	-1.971	-78352.511416	191705.686798	286-33-16	90-27-07	8.720
合計				倍面積	402.223684	-402.223684			63.567
				面積	201.1118423	201.1118423			

面積（座標法）計算書

地番：W126-1-3

測点名	[1] X(i)	[2] X(i+1)-X(i-1)	[3] Y(i)	[4] Y(i+1)-Y(i-1)	[2]*[3]	[1]*[4]	方向角	夾角	距離
W126-45	-97252.790	-19.641	-3183.742	-14.746	62532.163783	1434079.395133	196-06-09	89-32-53	23.029
W126-53	-97274.915	-24.544	-3190.129	1.991	78298.577244	-193635.245742	106-06-05	89-59-56	8.720
W126-54	-97277.334	19.641	-3181.751	14.746	-62493.066267	-1434441.318596	16-06-07	90-00-02	22.960
W126-44	-97255.274	24.544	-3175.383	-1.991	-77936.653781	193596.148226	286-33-16	90-27-09	8.720
合計				倍面積	401.020979	-401.020979			63.429
				面積	200.5104898	200.5104898			

面積（座標法）計算書

地番：W126-1-4

測点名	[1] X(i)	[2] X(i+1)-X(i-1)	[3] Y(i)	[4] Y(i+1)-Y(i-1)	[2]*[3]	[1]*[4]	方向角	夾角	距離
W126-36	-97257.759	24.478	-3167.025	-2.010	-77521.902512	195486.706014	286-33-16	90-27-11	8.720
W126-44	-97255.274	-19.575	-3175.383	-14.727	62157.840675	1432230.468220	196-06-07	89-32-51	22.960
W126-54	-97277.334	-24.478	-3181.751	2.010	77882.375497	-195526.051303	106-06-05	89-59-58	8.720
W126-39	-97279.752	19.575	-3173.373	14.727	-62118.495385	-1432590.941205	16-06-05	90-00-00	22.891
合計				倍面積	399.818274	-399.818274			63.291
				面積	199.9091373	199.9091373			

面積（座標法）計算書

地番：W126-1-5

測点名	[1] X(i)	[2] X(i+1)-X(i-1)	[3] Y(i)	[4] Y(i+1)-Y(i-1)	[2]*[3]	[1]*[4]	方向角	夾角	距離
W126-66	-97273.075	-6.069	-3198.673	22.533	19412.398096	-2191816.402445	16-00-30	89-27-31	0.601
W126-52	-97272.497	10.569	-3198.507	3.050	-33805.029380	-296701.528235	16-06-12	180-05-42	10.399
W126-49	-97262.506	14.932	-3195.623	-13.738	-47715.933666	1336199.252913	286-33-08	90-26-56	17.341
W126-56	-97257.565	3.597	-3212.245	-17.881	-11555.115019	1739104.333548	223-08-48	116-35-40	1.841
W126-C5	-97258.908	-3.359	-3213.504	-3.202	10795.250323	311391.703899	223-56-13	180-47-25	2.800
W126-C6	-97260.925	-4.006	-3215.447	-3.913	12879.674706	380605.701045	224-43-38	180-47-25	2.800
W126-C7	-97262.914	-3.951	-3217.417	-3.968	12712.684370	385950.807471	225-31-03	180-47-25	2.800
W126-C8	-97264.876	-3.514	-3219.415	-3.622	11313.464669	352334.980417	226-18-28	180-47-25	2.247
W126-63	-97266.428	-8.199	-3221.040	20.742	26408.426101	-2017514.668814	106-32-59	60-14-31	23.334
合計				倍面積	445.820200	-445.820200			64.163
				面積	222.9101000	222.9101000			

面積（座標法）計算書

地番：W126-2

測点名	[1] X(i)	[2] X(i+1)-X(i-1)	[3] Y(i)	[4] Y(i+1)-Y(i-1)	[2]*[3]	[1]*[4]	方向角	夾角	距離
W126-39	-97279.752	-24.959	-3173.373	3.925	79204.038559	-381856.647194	106-06-05	90-00-00	10.693
W126-43	-97282.718	18.946	-3163.099	16.599	-59929.236621	-1614798.197439	16-06-05	90-00-00	22.807
W126-35	-97260.806	24.959	-3156.774	-3.925	-78789.744473	381782.276161	286-33-16	90-27-11	10.694
W126-36	-97257.759	-18.946	-3167.025	-16.599	60003.607654	1614383.903352	196-06-05	89-32-49	22.891
合計				倍面積	488.665120	-488.665120			67.085
				面積	244.3325600	244.3325600			

面積（座標法）計算書

地 番： W126-3

測点名	[1] X(i)	[2] X(i+1)-X(i-1)	[3] Y(i)	[4] Y(i+1)-Y(i-1)	[2]*[3]	[1]*[4]	方向角	夾 角	距 離
W126-26	-97304.655	-23.720	-3169.998	-0.723	75192.392492	70328.817563	106-06-05	90-00-00	5.884
W126-27	-97306.287	42.228	-3164.344	18.679	-133623.369625	-1817564.471115	16-32-26	90-26-21	45.753
W126-34	-97262.427	45.481	-3151.319	7.570	-143326.019769	-736291.884760	286-33-16	90-00-50	5.691
W126-35	-97260.806	-20.290	-3156.774	-11.781	64052.247208	1145787.186507	196-06-05	89-32-49	22.807
W126-43	-97282.718	-21.761	-3163.099	-6.847	68833.048669	666132.524491	286-06-05	270-00-00	0.544
W126-42	-97282.567	-21.937	-3163.622	-6.898	69401.665121	671077.863215	196-06-05	90-00-00	22.990
合計				倍面積	529.964097	-529.964097			103.669
				面 積	264.9820488	264.9820488			

面積（座標法）計算書

地番：W126-4

測点名	[1] X(i)	[2] X(i+1)-X(i-1)	[3] Y(i)	[4] Y(i+1)-Y(i-1)	[2]*[3]	[1]*[4]	方向角	夾角	距離
W126-27	-97306.287	-46.097	-3164.344	-5.275	145866.388184	513316.985796	106-06-05	89-33-39	8.067
W126-28	-97308.524	41.561	-3156.594	20.758	-131192.160421	-2019909.601383	16-32-26	90-26-21	45.689
W126-33	-97264.726	46.097	-3143.587	5.275	-144909.519068	-513097.738680	286-33-16	90-00-50	8.067
W126-34	-97262.427	-41.561	-3151.319	-20.758	130972.913306	2018952.732267	196-32-26	89-59-10	45.753
合計				倍面積	737.622000	-737.622000			107.576
				面積	368.8110001	368.8110001			

面積（座標法）計算書

地番：W126-5

測点名	[1] X(i)	[2] X(i+1)-X(i-1)	[3] Y(i)	[4] Y(i+1)-Y(i-1)	[2]*[3]	[1]*[4]	方向角	夾角	距離
W126-29	-97308.629	-43.972	-3156.230	-12.395	138786.751025	1206097.118546	106-06-05	89-33-39	0.637
W126-30	-97308.806	43.614	-3155.618	13.617	-137629.583728	-1325073.627967	16-32-26	90-26-21	45.681
W126-31	-97265.015	43.972	-3142.613	12.395	-138187.971173	-1205556.540694	286-33-16	90-00-50	0.637
W126-32	-97264.834	-43.614	-3143.224	-13.617	137089.005876	1324474.848115	196-32-26	89-59-10	45.686
合計				倍面積	58.202000	-58.202000			92.641
				面積	29.1010002	29.1010002			

面積（座標法）計算書

地番：W126-6

測点名	[1] X(i)	[2] X(i+1)-X(i-1)	[3] Y(i)	[4] Y(i+1)-Y(i-1)	[2]*[3]	[1]*[4]	方向角	夾角	距離
W126-30	-97308.806	-53.369	-3155.618	20.177	168412.278483	-1963356.698883	106-06-05	89-33-39	34.536
W126-5	-97318.384	-8.135	-3122.437	35.818	25401.078216	-3485754.204632	61-18-09	135-12-04	3.005
W126-6	-97316.941	40.893	-3119.800	14.352	-127577.202780	-1396712.472533	16-32-26	135-14-17	41.153
W126-7	-97277.491	42.087	-3108.084	10.287	-130810.284171	-1000657.473907	331-32-51	135-00-25	3.000
W126-8	-97274.854	12.476	-3109.514	-34.529	-38795.162689	3358780.092428	286-33-16	135-00-25	34.531
W126-31	-97265.015	-33.952	-3142.613	-46.105	106698.284943	4484371.765527	196-32-26	89-59-10	45.681
合計				倍面積	3328.992001	-3328.992001			161.906
				面積	1664.4960006	1664.4960006			

面積（座標法）計算書

地番：W126-7

測点名	[1] X(i)	[2] X(i+1)-X(i-1)	[3] Y(i)	[4] Y(i+1)-Y(i-1)	[2]*[3]	[1]*[4]	方向角	夾角	距離
W126-25	-97302.870	-23.874	-3176.184	-0.190	75827.954497	18449.363559	106-06-05	90-00-00	6.439
W126-26	-97304.655	20.302	-3169.998	12.562	-64358.629169	-1222370.971278	16-06-05	90-00-00	22.990
W126-42	-97282.567	23.874	-3163.622	0.190	-75528.043002	-18445.514066	286-06-05	90-00-00	6.439
W126-41	-97280.781	-20.302	-3169.808	-12.562	64354.779676	1222071.059783	196-06-05	90-00-00	22.990
合計				倍面積	296.062000	-296.062000			58.858
				面積	148.0310005	148.0310005			

面積（座標法）計算書

地番：W126-8-1

測点名	[1] X(i)	[2] X(i+1)-X(i-1)	[3] Y(i)	[4] Y(i+1)-Y(i-1)	[2]*[3]	[1]*[4]	方向角	夾角	距離
W126-24	-97302.278	-22.679	-3178.232	-4.328	72080.025183	421139.936266	106-06-05	90-00-00	2.131
W126-25	-97302.870	21.497	-3176.184	8.424	-68278.598928	-819655.407014	16-06-05	90-00-00	22.990
W126-41	-97280.781	22.679	-3169.808	4.328	-71888.980464	-421046.893550	286-06-05	90-00-00	2.131
W126-40	-97280.190	-21.497	-3171.856	-8.424	68185.556212	819464.362295	196-06-05	90-00-00	22.990
合計				倍面積	98.002002	-98.002002			50.242
				面積	49.0010013	49.0010013			

面積（座標法）計算書

地番：W126-8-2

測点名	[1] X(i)	[2] X(i+1)-X(i-1)	[3] Y(i)	[4] Y(i+1)-Y(i-1)	[2]*[3]	[1]*[4]	方向角	夾角	距離
W126-24	-97302.278	19.634	-3178.232	14.880	-62399.864180	-1447818.213642	16-06-05	90-00-00	22.990
W126-40	-97280.190	24.543	-3171.856	-2.128	-77846.297518	206980.853274	286-06-05	90-00-00	8.851
W126-68	-97277.736	-19.634	-3180.359	-14.880	62441.637967	1447453.026429	196-06-05	90-00-00	22.990
W126-67	-97299.824	-24.543	-3186.735	2.128	78211.484731	-207022.627061	106-06-05	90-00-00	8.851
合計				倍面積	406.961000	-406.961000			63.682
				面積	203.4805000	203.4805000			

面積（座標法）計算書

地番：W126-8-3

測点名	[1] X(i)	[2] X(i+1)-X(i-1)	[3] Y(i)	[4] Y(i+1)-Y(i-1)	[2]*[3]	[1]*[4]	方向角	夾角	距離
W126-68	-97277.736	24.543	-3180.359	-2.128	-78055.422738	207020.347527	286-06-05	90-00-00	8.851
W126-37	-97275.281	-19.633	-3188.863	-14.880	62608.180108	1447461.216042	196-06-05	90-00-00	22.990
W126-22	-97297.369	-24.543	-3195.239	2.128	78420.623207	-207062.130057	106-06-05	90-00-00	8.851
W126-67	-97299.824	19.633	-3186.735	14.880	-62566.397577	-1447826.416511	16-06-05	90-00-00	22.990
合計				倍面積	406.982999	-406.982999			63.682
				面積	203.4914996	203.4914996			

面積（座標法）計算書

地番：W126-9-1

測点名	[1] X(i)	[2] X(i+1)-X(i-1)	[3] Y(i)	[4] Y(i+1)-Y(i-1)	[2]*[3]	[1]*[4]	方向角	夾角	距離
W126-37	-97275.281	24.872	-3188.863	-3.268	-79313.030911	317859.059949	286-06-05	90-00-00	10.037
W126-52	-97272.497	-19.315	-3198.507	-15.984	61778.552992	1554773.144956	196-00-30	89-54-25	22.990
W126-48	-97294.596	-24.872	-3204.847	3.268	79710.575263	-317922.173486	106-06-05	90-05-35	10.000
W126-22	-97297.369	19.315	-3195.239	15.984	-61715.439455	-1555170.689308	16-06-05	90-00-00	22.990
合計				倍面積	460.657889	-460.657889			66.017
				面積	230.3289448	230.3289448			

面積（座標法）計算書

地番：W126-9-2

測点名	[1] X(i)	[2] X(i+1)-X(i-1)	[3] Y(i)	[4] Y(i+1)-Y(i-1)	[2]*[3]	[1]*[4]	方向角	夾角	距離
W126-47	-97291.822	-24.359	-3214.455	3.377	78301.296368	-328536.954646	106-06-05	90-00-00	10.000
W126-48	-97294.596	18.748	-3204.847	15.782	-60082.976416	-1535516.475631	16-00-30	89-54-25	22.389
W126-66	-97273.075	24.359	-3198.673	-3.377	-77916.857421	328473.647607	286-32-59	90-32-29	9.964
W126-64	-97270.236	-18.748	-3208.224	-15.782	60146.283456	1535132.036684	196-06-05	89-33-06	22.467
合計				倍面積	447.745986	-447.745986			64.820
				面積	223.8729934	223.8729934			

面積（座標法）計算書

地番：W126-9-3

測点名	[1] X(i)	[2] X(i+1)-X(i-1)	[3] Y(i)	[4] Y(i+1)-Y(i-1)	[2]*[3]	[1]*[4]	方向角	夾角	距離
W126-70	-97288.779	-24.712	-3224.999	4.289	79695.639003	-417270.289581	106-06-05	90-00-00	10.974
W126-47	-97291.822	18.542	-3214.455	16.775	-59603.079856	-1632038.321127	16-06-05	90-00-00	22.467
W126-64	-97270.236	24.712	-3208.224	-4.289	-79281.106074	417190.762311	286-32-59	90-26-54	10.975
W126-69	-97267.110	-18.542	-3218.744	-16.775	59682.607127	1631623.788198	196-06-05	89-33-06	22.553
合計				倍面積	494.060199	-494.060199			66.969
				面積	247.0301000	247.0301000			

面積（座標法）計算書

地番：W126-9-4

測点名	[1] X(i)	[2] X(i+1)-X(i-1)	[3] Y(i)	[4] Y(i+1)-Y(i-1)	[2]*[3]	[1]*[4]	方向角	夾角	距離
W126-3	-97280.488	-5.866	-3237.560	-0.343	18991.503754	33399.912958	169-47-20	117-20-06	5.000
W126-4	-97285.408	-8.291	-3236.674	12.562	26835.379507	-1222081.639889	106-06-05	116-18-45	12.152
W126-70	-97288.779	18.298	-3224.999	17.930	-59011.234944	-1744405.531822	16-06-05	90-00-00	22.553
W126-69	-97267.110	22.350	-3218.744	3.959	-71940.516223	-385079.015801	286-32-59	90-26-54	2.395
W126-63	-97266.428	0.300	-3221.040	-2.696	-967.094743	262189.501057	226-18-28	119-45-29	0.553
W126-C9	-97266.810	-2.288	-3221.439	-2.451	7370.772122	238386.449674	227-05-53	180-47-25	2.800
W126-C10	-97268.716	-3.784	-3223.491	-4.128	12196.638832	401542.165833	227-53-18	180-47-25	2.800
W126-C11	-97270.594	-3.726	-3225.568	-4.180	12019.677844	406587.979218	228-40-43	180-47-25	2.800
W126-C12	-97272.443	-3.668	-3227.670	-4.231	11840.285344	411556.504334	229-28-08	180-47-25	2.800
W126-C13	-97274.262	-3.610	-3229.799	-4.281	11658.485826	416446.797022	230-15-33	180-47-25	2.800
W126-C14	-97276.052	-3.550	-3231.952	-4.331	11474.305460	421257.913145	231-02-58	180-47-25	2.800
W126-C15	-97277.812	-3.490	-3234.129	-4.379	11287.770816	425988.937781	231-50-23	180-47-25	2.800
W126-C16	-97279.542	-2.675	-3236.331	-3.431	8657.766602	333796.286285	232-27-14	180-36-51	1.551
合計				倍面積	413.740200	-413.740200			63.804
				面積	206.8701000	206.8701000			

面積（座標法）計算書

地番：W126-10

測点名	[1] X(i)	[2] X(i+1)-X(i-1)	[3] Y(i)	[4] Y(i+1)-Y(i-1)	[2]*[3]	[1]*[4]	方向角	夾角	距離
W126-28	-97308.524	-43.903	-3156.594	-12.644	138585.446545	1230351.660417	106-06-05	89-33-39	0.378
W126-29	-97308.629	43.691	-3156.230	13.370	-137897.845448	-1301037.859094	16-32-26	90-26-21	45.686
W126-32	-97264.834	43.903	-3143.224	12.644	-137998.447390	-1229799.243263	286-33-16	90-00-50	0.378
W126-33	-97264.726	-43.691	-3143.587	-13.370	137345.428293	1300450.859939	196-32-26	89-59-10	45.689
合計				倍面積	34.582000	-34.582000			92.131
				面積	17.2910001	17.2910001			