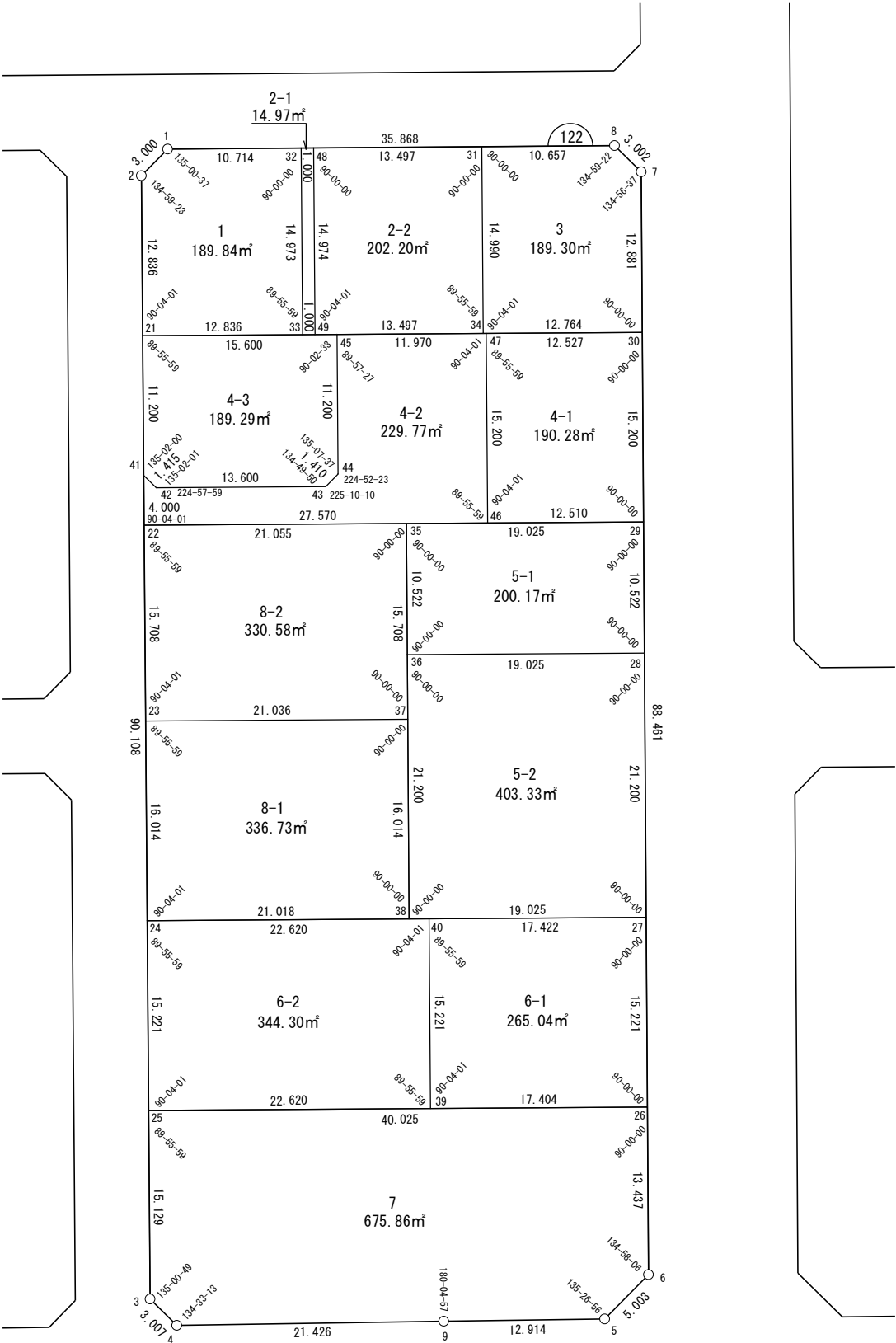


面積一覧表

地番名	地積
W122-1	189.84 m ²
W122-2-1	14.97 m ²
W122-2-2	202.20 m ²
W122-3	189.30 m ²
W122-4-1	190.28 m ²
W122-4-2	229.77 m ²
W122-4-3	189.29 m ²
W122-5-1	200.17 m ²
W122-5-2	403.33 m ²
W122-6-1	265.04 m ²
W122-6-2	344.30 m ²
W122-7	675.86 m ²
W122-8-1	336.73 m ²
W122-8-2	330.58 m ²
合計	3761.66 m ²

座 標 一 覧 表

測 点 名	X 座 標	Y 座 標
W122-1	-97265.177	-2966.588
W122-2	-97266.605	-2969.226
W122-3	-97352.979	-2994.900
W122-4	-97355.623	-2993.468
W122-5	-97365.177	-2960.484
W122-6	-97362.801	-2956.081
W122-7	-97278.036	-2930.777
W122-8	-97275.396	-2932.206
W122-9	-97361.573	-2972.885
W122-21	-97278.910	-2972.883
W122-22	-97293.480	-2977.214
W122-23	-97308.536	-2981.690
W122-24	-97323.887	-2986.253
W122-25	-97338.477	-2990.590
W122-26	-97349.926	-2952.237
W122-27	-97335.341	-2947.883
W122-28	-97315.026	-2941.819
W122-29	-97304.944	-2938.809
W122-30	-97290.379	-2934.462
W122-31	-97272.360	-2942.422
W122-32	-97268.229	-2956.318
W122-33	-97282.581	-2960.584
W122-34	-97286.728	-2946.692
W122-35	-97299.502	-2957.039
W122-36	-97309.584	-2960.049
W122-37	-97314.554	-2961.532
W122-38	-97329.899	-2966.113
W122-39	-97344.947	-2968.914
W122-40	-97330.357	-2964.578
W122-41	-97289.645	-2976.075
W122-42	-97290.890	-2975.401
W122-43	-97294.780	-2962.370
W122-44	-97294.106	-2961.131
W122-45	-97283.372	-2957.935
W122-46	-97301.366	-2950.796
W122-47	-97286.796	-2946.465
W122-48	-97268.514	-2955.359
W122-49	-97282.867	-2959.626



世界測地系

面積（座標法）計算書

地番：W122-1

測点名	[1] X(i)	[2] X(i+1)-X(i-1)	[3] Y(i)	[4] Y(i+1)-Y(i-1)	[2]*[3]	[1]*[4]	方向角	夾角	距離
W122-32	-97268.229	17.405	-2956.318	-6.004	-51453.958259	583979.393997	286-33-16	90-00-00	10.714
W122-1	-97265.177	1.624	-2966.588	-12.908	-4817.759563	1255531.863046	241-33-53	135-00-37	3.000
W122-2	-97266.605	-13.733	-2969.226	-6.296	40776.550776	612377.707863	196-33-16	134-59-23	12.836
W122-21	-97278.910	-15.976	-2972.883	8.642	47494.956655	-840707.538496	106-37-17	90-04-01	12.836
W122-33	-97282.581	10.680	-2960.584	16.566	-31620.104809	-1611561.111209	16-33-16	89-55-59	14.973
合計				倍面積	379.684798	-379.684798			54.359
				面積	189.8423992	189.8423992			

面積（座標法）計算書

地 番： W122-2-1

測点名	[1] X(i)	[2] X(i+1)-X(i-1)	[3] Y(i)	[4] Y(i+1)-Y(i-1)	[2]*[3]	[1]*[4]	方向角	夾 角	距 離
W122-32	-97268.229	-14.067	-2956.318	-5.225	41586.888725	508192.453330	196-33-16	90-00-00	14.973
W122-33	-97282.581	-14.638	-2960.584	-3.308	43337.309870	321799.541216	106-37-17	90-04-01	1.000
W122-49	-97282.867	14.067	-2959.626	5.225	-41633.421148	-508268.932259	16-33-16	89-55-59	14.974
W122-48	-97268.514	14.638	-2955.359	3.308	-43260.830941	-321753.008793	286-33-16	90-00-00	1.000
合計				倍面積	29.946506	-29.946506			31.947
				面 積	14.9732531	14.9732531			

面積（座標法）計算書

地 番： W122-2-2

測点名	[1] X(i)	[2] X(i+1)-X(i-1)	[3] Y(i)	[4] Y(i+1)-Y(i-1)	[2]*[3]	[1]*[4]	方向角	夾 角	距 離
W122-48	-97268.514	-10.508	-2955.359	-17.204	31053.476319	1673409.910084	196-33-16	90-00-00	14.974
W122-49	-97282.867	-18.214	-2959.626	8.667	53906.467682	-843117.770200	106-37-17	90-04-01	13.497
W122-34	-97286.728	10.508	-2946.692	17.204	-30962.411245	-1673723.263304	16-33-16	89-55-59	14.990
W122-31	-97272.360	18.214	-2942.422	-8.667	-53593.114462	843026.705126	286-33-16	90-00-00	13.497
合計				倍面積	404.418294	-404.418294			56.958
				面 積	202.2091471	202.2091471			

面積（座標法）計算書

地番：W122-3

測点名	[1] X(i)	[2] X(i+1)-X(i-1)	[3] Y(i)	[4] Y(i+1)-Y(i-1)	[2]*[3]	[1]*[4]	方向角	夾角	距離
W122-34	-97286.728	-18.019	-2946.692	7.960	53097.805516	-774402.434264	106-37-17	90-04-01	12.764
W122-30	-97290.379	8.692	-2934.462	15.916	-25506.031990	-1548431.911183	16-37-17	90-00-00	12.881
W122-7	-97278.036	14.983	-2930.777	2.255	-43911.969747	-219373.761954	331-33-54	134-56-37	3.002
W122-8	-97275.396	5.676	-2932.206	-11.645	-16644.366719	1132737.223866	286-33-16	134-59-22	10.657
W122-31	-97272.360	-11.332	-2942.422	-14.486	33343.167570	1409092.278907	196-33-16	90-00-00	14.990
合計				倍面積	378.604629	-378.604629			54.294
				面積	189.3023147	189.3023147			

面積（座標法）計算書

地 番： W122-4-1

測点名	[1] X(i)	[2] X(i+1)-X(i-1)	[3] Y(i)	[4] Y(i+1)-Y(i-1)	[2]*[3]	[1]*[4]	方向角	夾 角	距 離
W122-46	-97301.366	-18.148	-2950.796	7.656	53551.755365	-744940.669994	106-37-17	90-04-01	12.510
W122-29	-97304.944	10.987	-2938.809	16.335	-32287.317013	-1589453.252716	16-37-17	90-00-00	15.200
W122-30	-97290.379	18.148	-2934.462	-7.656	-53255.308178	744856.556962	286-37-17	90-00-00	12.527
W122-47	-97286.796	-10.987	-2946.465	-16.335	32371.430044	1589156.805528	196-33-16	89-55-59	15.200
合計				倍面積	380.560219	-380.560219			55.437
				面 積	190.2801096	190.2801096			

面積（座標法）計算書

地 番： W122-4-2

測点名	[1] X(i)	[2] X(i+1)-X(i-1)	[3] Y(i)	[4] Y(i+1)-Y(i-1)	[2]*[3]	[1]*[4]	方向角	夾 角	距 離
W122-41	-97289.645	-2.590	-2976.075	-1.813	7706.851463	176385.465109	196-33-16	44-58-00	4.000
W122-22	-97293.480	-11.720	-2977.214	25.278	34894.391397	-2459414.725501	106-37-17	90-04-01	27.570
W122-46	-97301.366	6.684	-2950.796	30.749	-19722.059552	-2991907.622891	16-33-16	89-55-59	15.200
W122-47	-97286.796	17.994	-2946.465	-7.139	-53018.387717	694528.641394	286-37-17	90-04-01	11.970
W122-45	-97283.372	-7.310	-2957.935	-14.666	21623.772695	1426716.910868	196-34-44	89-57-27	11.200
W122-44	-97294.106	-11.408	-2961.131	-4.434	33781.262659	431431.396356	241-27-07	224-52-23	1.410
W122-43	-97294.780	3.216	-2962.370	-14.270	-9528.139015	1388426.127448	286-37-17	225-10-10	13.600
W122-42	-97290.890	5.135	-2975.401	-13.705	-15278.146875	1333374.262158	331-35-16	224-57-59	1.415
合計				倍面積	459.545056	-459.545056			86.365
				面 積	229.7725283	229.7725283			

面積（座標法）計算書

地 番： W122-4-3

測点名	[1] X(i)	[2] X(i+1)-X(i-1)	[3] Y(i)	[4] Y(i+1)-Y(i-1)	[2]*[3]	[1]*[4]	方向角	夾 角	距 離
W122-21	-97278.910	-6.273	-2972.883	-18.139	18650.119063	1764574.081070	196-33-16	89-55-59	11.200
W122-41	-97289.645	-11.980	-2976.075	-2.518	35654.332437	244962.660476	151-35-16	135-02-00	1.415
W122-42	-97290.890	-5.135	-2975.401	13.705	15278.146875	-1333374.262158	106-37-17	135-02-01	13.600
W122-43	-97294.780	-3.216	-2962.370	14.270	9528.139015	-1388426.127448	61-27-07	134-49-50	1.410
W122-44	-97294.106	11.408	-2961.131	4.434	-33781.262659	-431431.396356	16-34-44	135-07-37	11.200
W122-45	-97283.372	15.197	-2957.935	-11.752	-44950.894007	1143316.463693	286-37-17	90-02-33	15.600
合計				倍面積	378.580723	-378.580723			54.425
				面 積	189.2903618	189.2903618			

面積（座標法）計算書

地番：W122-5-1

測点名	[1] X(i)	[2] X(i+1)-X(i-1)	[3] Y(i)	[4] Y(i+1)-Y(i-1)	[2]*[3]	[1]*[4]	方向角	夾角	距離
W122-28	-97315.026	4.640	-2941.819	21.240	-13650.389217	-2066924.096604	16-37-17	90-00-00	10.522
W122-29	-97304.944	15.524	-2938.809	-15.220	-45622.150965	1480994.056153	286-37-17	90-00-00	19.025
W122-35	-97299.502	-4.640	-2957.039	-21.240	13721.012431	2066594.373818	196-37-17	90-00-00	10.522
W122-36	-97309.584	-15.524	-2960.049	15.220	45951.873751	-1481064.679367	106-37-17	90-00-00	19.025
合計				倍面積	400.345999	-400.345999			59.094
				面積	200.1730000	200.1730000			

面積（座標法）計算書

地番：W122-5-2

測点名	[1] X(i)	[2] X(i+1)-X(i-1)	[3] Y(i)	[4] Y(i+1)-Y(i-1)	[2]*[3]	[1]*[4]	方向角	夾角	距離
W122-36	-97309.584	-14.873	-2960.049	-24.294	44023.729852	2364050.709010	196-37-17	90-00-00	21.200
W122-38	-97329.899	-25.757	-2966.113	12.166	76396.820842	-1184069.629943	106-37-17	90-00-00	19.025
W122-27	-97335.341	14.873	-2947.883	24.294	-43842.796381	-2364676.441539	16-37-17	90-00-00	21.200
W122-28	-97315.026	25.757	-2941.819	-12.166	-75771.088312	1183888.696472	286-37-17	90-00-00	19.025
合計				倍面積	806.666000	-806.666000			80.450
				面積	403.3330004	403.3330004			

面積（座標法）計算書

地番：W122-6-1

測点名	[1] X(i)	[2] X(i+1)-X(i-1)	[3] Y(i)	[4] Y(i+1)-Y(i-1)	[2]*[3]	[1]*[4]	方向角	夾角	距離
W122-39	-97344.947	-19.568	-2968.914	12.340	58096.668372	-1201265.123546	106-37-17	90-04-01	17.404
W122-26	-97349.926	9.606	-2952.237	21.031	-28360.277031	-2047359.776456	16-37-17	90-00-00	15.221
W122-27	-97335.341	19.568	-2947.883	-12.340	-57685.128323	1201146.578156	286-37-17	90-00-00	17.422
W122-40	-97330.357	-9.606	-2964.578	-21.031	28478.822421	2046948.236407	196-33-16	89-55-59	15.221
合計				倍面積	530.085438	-530.085438			65.268
				面積	265.0427195	265.0427195			

面積（座標法）計算書

地番：W122-6-2

測点名	[1] X(i)	[2] X(i+1)-X(i-1)	[3] Y(i)	[4] Y(i+1)-Y(i-1)	[2]*[3]	[1]*[4]	方向角	夾角	距離
W122-25	-97338.477	-21.060	-2990.590	17.338	62982.896208	-1687696.392407	106-37-17	90-04-01	22.620
W122-39	-97344.947	8.119	-2968.914	26.012	-24105.851189	-2532139.151170	16-33-16	89-55-59	15.221
W122-40	-97330.357	21.060	-2964.578	-17.338	-62435.073576	1687555.614474	286-37-17	90-04-01	22.620
W122-24	-97323.887	-8.119	-2986.253	-26.012	24246.629121	2531591.328539	196-33-16	89-55-59	15.221
合計				倍面積	688.600563	-688.600563			75.682
				面積	344.3002818	344.3002818			

面積（座標法）計算書

地番：W122-7

測点名	[1] X(i)	[2] X(i+1)-X(i-1)	[3] Y(i)	[4] Y(i+1)-Y(i-1)	[2]*[3]	[1]*[4]	方向角	夾角	距離
W122-25	-97338.477	-3.053	-2990.590	-42.663	9130.429305	4152749.185612	196-33-16	89-55-59	15.129
W122-3	-97352.979	-17.146	-2994.900	-2.879	51351.987628	280265.946790	151-34-05	135-00-49	3.007
W122-4	-97355.623	-8.594	-2993.468	22.015	25726.298636	-2143322.092201	106-07-18	134-33-13	21.426
W122-9	-97361.573	-9.553	-2972.885	32.985	28401.413533	-3211454.880797	106-12-15	180-04-57	12.914
W122-5	-97365.177	-1.229	-2960.484	16.804	3637.305792	-1636115.394211	61-39-11	135-26-56	5.003
W122-6	-97362.801	15.251	-2956.081	8.246	-45083.362381	-802887.845113	16-37-17	134-58-06	13.437
W122-26	-97349.926	24.325	-2952.237	-34.509	-71812.346515	3359413.353921	286-37-17	90-00-00	40.025
合計				倍面積	1351.725999	-1351.725999			110.941
				面積	675.8629996	675.8629996			

面積（座標法）計算書

地番：W122-8-1

測点名	[1] X(i)	[2] X(i+1)-X(i-1)	[3] Y(i)	[4] Y(i+1)-Y(i-1)	[2]*[3]	[1]*[4]	方向角	夾角	距離
W122-23	-97308.536	-9.333	-2981.690	-24.720	27828.274799	2405500.630804	196-33-16	89-55-59	16.014
W122-24	-97323.887	-21.362	-2986.253	15.577	63793.791064	-1515981.903504	106-37-17	90-04-01	21.018
W122-38	-97329.899	9.333	-2966.113	24.720	-27682.896902	-2406028.718906	16-37-17	90-00-00	16.014
W122-37	-97314.554	21.362	-2961.532	-15.577	-63265.702962	1515836.525607	286-37-17	90-00-00	21.036
合計				倍面積	673.465999	-673.465999			74.082
				面積	336.7329995	336.7329995			

面積（座標法）計算書

地番：W122-8-2

測点名	[1] X(i)	[2] X(i+1)-X(i-1)	[3] Y(i)	[4] Y(i+1)-Y(i-1)	[2]*[3]	[1]*[4]	方向角	夾角	距離
W122-37	-97314.554	9.034	-2961.532	24.651	-26754.993777	-2398867.648384	16-37-17	90-00-00	15.708
W122-35	-97299.502	21.074	-2957.039	-15.682	-62317.271010	1525839.527052	286-37-17	90-00-00	21.055
W122-22	-97293.480	-9.034	-2977.214	-24.651	26896.666620	2398348.155226	196-33-16	89-55-59	15.708
W122-23	-97308.536	-21.074	-2981.690	15.682	62836.764168	-1525981.199894	106-37-17	90-04-01	21.036
合計				倍面積	661.166000	-661.166000			73.507
				面積	330.5830002	330.5830002			