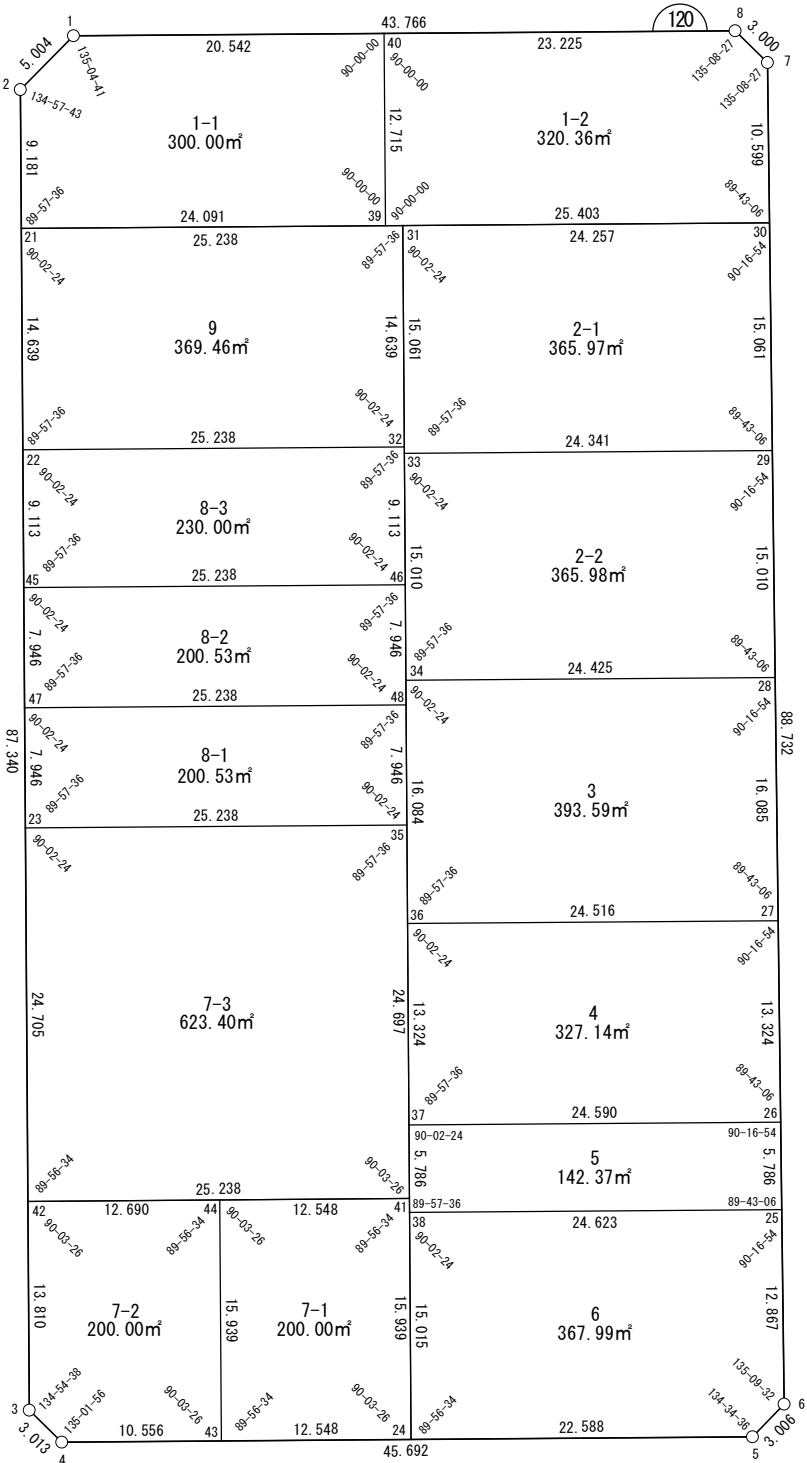


面積一覧表

地番名	地積
W120-1-1	300.00㎡
W120-1-2	320.36㎡
W120-2-1	365.97㎡
W120-2-2	365.98㎡
W120-3	393.59㎡
W120-4	327.14㎡
W120-5	142.37㎡
W120-6	367.99㎡
W120-7-1	200.00㎡
W120-7-2	200.00㎡
W120-7-3	623.40㎡
W120-8-1	200.53㎡
W120-8-2	200.53㎡
W120-8-3	230.00㎡
W120-9	369.46㎡
合計	4607.32㎡

座 標 一 覧 表

測 点 名	X 座 標	Y 座 標
W120-1	-97231.564	-2900.702
W120-2	-97233.940	-2905.106
W120-3	-97317.635	-2930.074
W120-4	-97320.283	-2928.638
W120-5	-97333.302	-2884.840
W120-6	-97331.851	-2882.208
W120-7	-97246.681	-2857.319
W120-8	-97244.047	-2858.753
W120-21	-97242.738	-2907.730
W120-22	-97256.766	-2911.915
W120-23	-97280.727	-2919.064
W120-24	-97326.866	-2906.491
W120-25	-97319.500	-2878.599
W120-26	-97313.947	-2876.976
W120-27	-97301.157	-2873.238
W120-28	-97285.719	-2868.727
W120-29	-97271.311	-2864.516
W120-30	-97256.854	-2860.292
W120-31	-97249.936	-2883.541
W120-32	-97263.965	-2887.726
W120-33	-97264.369	-2887.846
W120-34	-97278.752	-2892.137
W120-35	-97287.926	-2894.874
W120-36	-97294.165	-2896.736
W120-37	-97306.933	-2900.545
W120-38	-97312.477	-2902.199
W120-39	-97249.609	-2884.640
W120-40	-97237.422	-2881.013
W120-41	-97311.592	-2901.935
W120-42	-97304.401	-2926.126
W120-43	-97323.291	-2918.519
W120-44	-97308.017	-2913.962
W120-45	-97265.499	-2914.521
W120-46	-97272.698	-2890.331
W120-47	-97273.113	-2916.792
W120-48	-97280.312	-2892.603



世界測地系

面積（座標法）計算書

地番：W120-1-1

測点名	[1] X(i)	[2] X(i+1)-X(i-1)	[3] Y(i)	[4] Y(i+1)-Y(i-1)	[2]*[3]	[1]*[4]	方向角	夾角	距離
W120-40	-97237.422	18.045	-2881.013	-16.062	-51989.191029	1561835.836070	286-34-18	90-00-00	20.542
W120-1	-97231.564	3.483	-2900.702	-24.092	-10102.120261	2342530.416277	241-38-59	135-04-41	5.004
W120-2	-97233.940	-11.174	-2905.106	-7.029	32462.403814	683409.650312	196-36-42	134-57-43	9.181
W120-21	-97242.738	-15.669	-2907.730	20.466	45562.035327	-1990154.484144	106-34-18	89-57-36	24.091
W120-39	-97249.609	5.315	-2884.640	26.717	-15333.122053	-2598221.424314	16-34-18	90-00-00	12.715
合計				倍面積	600.005798	-600.005798			71.533
				面積	300.0028993	300.0028993			

面積（座標法）計算書

地 番： W120-1-2

測点名	[1] X(i)	[2] X(i+1)-X(i-1)	[3] Y(i)	[4] Y(i+1)-Y(i-1)	[2]*[3]	[1]*[4]	方向角	夾 角	距 離
W120-39	-97249.609	-19.432	-2884.640	20.722	56054.397620	-2015173.013662	106-34-18	90-00-00	25.403
W120-30	-97256.854	2.928	-2860.292	27.321	-8374.981853	-2657161.977588	16-17-24	89-43-06	10.599
W120-7	-97246.681	12.808	-2857.319	1.538	-36596.480487	-149604.663715	331-25-51	135-08-27	3.000
W120-8	-97244.047	9.259	-2858.753	-23.695	-26468.094044	2304162.158625	286-34-18	135-08-27	23.225
W120-40	-97237.422	-5.563	-2881.013	-25.887	16025.878965	2517136.776141	196-34-18	90-00-00	12.715
合計				倍面積 面 積	640.720199 320.3601000	-640.720199 320.3601000			74.942

面積（座標法）計算書

地番：W120-2-1

測点名	[1] X(i)	[2] X(i+1)-X(i-1)	[3] Y(i)	[4] Y(i+1)-Y(i-1)	[2]*[3]	[1]*[4]	方向角	夾角	距離
W120-29	-97271.311	7.514	-2864.516	27.555	-21525.016464	-2680295.429974	16-17-24	89-43-06	15.061
W120-30	-97256.854	21.375	-2860.292	-19.024	-61139.281331	1850250.307154	286-34-18	90-16-54	24.257
W120-31	-97249.936	-7.514	-2883.541	-27.555	21667.972484	2679706.439995	196-36-42	90-02-24	15.061
W120-33	-97264.369	-21.375	-2887.846	19.024	61728.271309	-1850393.263174	106-34-18	89-57-36	24.341
合計				倍面積	731.945998	-731.945998			78.720
				面積	365.9729991	365.9729991			

面積（座標法）計算書

地番：W120-2-2

測点名	[1] X(i)	[2] X(i+1)-X(i-1)	[3] Y(i)	[4] Y(i+1)-Y(i-1)	[2]*[3]	[1]*[4]	方向角	夾角	距離
W120-33	-97264.369	-7.441	-2887.846	-27.621	21487.577479	2686546.981483	196-36-42	90-02-24	15.010
W120-34	-97278.752	-21.350	-2892.137	19.120	61746.152307	-1859960.195594	106-34-18	89-57-36	24.425
W120-28	-97285.719	7.441	-2868.727	27.621	-21345.312170	-2687136.682173	16-17-24	89-43-06	15.010
W120-29	-97271.311	21.350	-2864.516	-19.120	-61156.451617	1859817.930285	286-34-18	90-16-54	24.341
合計				倍面積	731.965998	-731.965998			78.786
				面積	365.9829994	365.9829994			

面積（座標法）計算書

地番：W120-3

測点名	[1] X(i)	[2] X(i+1)-X(i-1)	[3] Y(i)	[4] Y(i+1)-Y(i-1)	[2]*[3]	[1]*[4]	方向角	夾角	距離
W120-34	-97278.752	-8.447	-2892.137	-28.009	24428.666954	2724688.843775	196-36-42	90-02-24	16.084
W120-36	-97294.165	-22.405	-2896.736	18.899	64902.302027	-1838779.413746	106-34-18	89-57-36	24.516
W120-27	-97301.157	8.447	-2873.238	28.009	-24269.033587	-2725316.396407	16-17-24	89-43-06	16.085
W120-28	-97285.719	22.405	-2868.727	-18.899	-64274.749395	1838619.780378	286-34-18	90-16-54	24.425
合計				倍面積	787.185999	-787.185999			81.110
				面積	393.5929999	393.5929999			

面積（座標法）計算書

地番：W120-4

測点名	[1] X(i)	[2] X(i+1)-X(i-1)	[3] Y(i)	[4] Y(i+1)-Y(i-1)	[2]*[3]	[1]*[4]	方向角	夾角	距離
W120-36	-97294.165	-5.776	-2896.736	-27.306	16730.356466	2656758.633984	196-36-42	90-02-24	13.324
W120-37	-97306.933	-19.781	-2900.545	19.760	57376.876019	-1922786.396009	106-34-18	89-57-36	24.590
W120-26	-97313.947	5.776	-2876.976	27.306	-16616.230732	-2657298.794251	16-17-24	89-43-06	13.324
W120-27	-97301.157	19.781	-2873.238	-19.760	-56836.715752	1922672.270275	286-34-18	90-16-54	24.516
合計				倍面積	654.286000	-654.286000			75.754
				面積	327.1430002	327.1430002			

面積（座標法）計算書

地番：W120-5

測点名	[1] X(i)	[2] X(i+1)-X(i-1)	[3] Y(i)	[4] Y(i+1)-Y(i-1)	[2]*[3]	[1]*[4]	方向角	夾角	距離
W120-37	-97306.933	1.469	-2900.545	-25.223	-4261.221602	2454389.078053	196-36-42	90-02-24	5.786
W120-38	-97312.477	-12.567	-2902.199	21.946	36472.820807	-2135630.002552	106-34-18	89-57-36	24.623
W120-25	-97319.500	-1.469	-2878.599	25.223	4228.980339	-2454706.065319	16-17-24	89-43-06	5.786
W120-26	-97313.947	12.567	-2876.976	-21.946	-36155.833541	2135662.243814	286-34-18	90-16-54	24.590
合計				倍面積	284.746003	-284.746003			60.785
				面積	142.3730016	142.3730016			

面積（座標法）計算書

地 番： W120-6

測点名	[1] X(i)	[2] X(i+1)-X(i-1)	[3] Y(i)	[4] Y(i+1)-Y(i-1)	[2]*[3]	[1]*[4]	方向角	夾 角	距 離
W120-38	-97312.477	-7.366	-2902.199	-27.893	21377.084075	2714317.927019	196-36-42	90-02-24	15.015
W120-24	-97326.866	-20.824	-2906.491	17.359	60526.082121	-1689469.738622	106-33-16	89-56-34	22.588
W120-5	-97333.302	-4.985	-2884.840	24.284	14379.537762	-2363609.042397	61-07-52	134-34-36	3.006
W120-6	-97331.851	13.802	-2882.208	6.241	-39779.105052	-607494.925303	16-17-24	135-09-32	12.867
W120-25	-97319.500	19.373	-2878.599	-19.991	-55767.612909	1945519.793306	286-34-18	90-16-54	24.623
合計				倍面積	735.985997	-735.985997			78.099
				面 積	367.9929989	367.9929989			

面積（座標法）計算書

地番：W120-7-1

測点名	[1] X(i)	[2] X(i+1)-X(i-1)	[3] Y(i)	[4] Y(i+1)-Y(i-1)	[2]*[3]	[1]*[4]	方向角	夾角	距離
W120-24	-97326.866	11.699	-2906.491	16.584	-34002.671096	-1614099.158425	16-36-42	90-03-26	15.939
W120-41	-97311.592	18.849	-2901.935	-7.471	-54699.109928	726999.050051	286-33-16	89-56-34	12.548
W120-44	-97308.017	-11.699	-2913.962	-16.584	34090.071462	1613786.557618	196-36-42	90-03-26	15.939
W120-43	-97323.291	-18.849	-2918.519	7.471	55011.710736	-727086.450418	106-33-16	89-56-34	12.548
合計				倍面積	400.001173	-400.001173			56.974
				面積	200.0005869	200.0005869			

面積（座標法）計算書

地 番： W120-7-2

測点名	[1] X(i)	[2] X(i+1)-X(i-1)	[3] Y(i)	[4] Y(i+1)-Y(i-1)	[2]*[3]	[1]*[4]	方向角	夾 角	距 離
W120-44	-97308.017	18.890	-2913.962	-7.607	-55044.165256	740267.656789	286-33-16	89-56-34	12.690
W120-42	-97304.401	-9.618	-2926.126	-16.112	28142.706254	1567786.912867	196-36-42	90-03-26	13.810
W120-3	-97317.635	-15.882	-2930.074	-2.511	46535.551010	244391.225519	151-31-20	134-54-38	3.013
W120-4	-97320.283	-5.656	-2928.638	11.555	16565.240391	-1124579.804600	106-33-16	135-01-56	10.556
W120-43	-97323.291	12.266	-2918.519	14.675	-35799.331227	-1428265.991749	16-36-42	90-03-26	15.939
合計				倍面積	400.001173	-400.001173			56.008
				面 積	200.0005869	200.0005869			

面積（座標法）計算書

地番：W120-7-3

測点名	[1] X(i)	[2] X(i+1)-X(i-1)	[3] Y(i)	[4] Y(i+1)-Y(i-1)	[2]*[3]	[1]*[4]	方向角	夾角	距離
W120-41	-97311.592	16.476	-2901.935	31.252	-47810.972299	-3041206.981214	16-36-42	90-03-26	24.697
W120-35	-97287.926	30.865	-2894.874	-17.129	-89349.453976	1666457.027581	286-34-18	89-57-36	25.238
W120-23	-97280.727	-16.476	-2919.064	-31.252	48093.184064	3040242.389327	196-36-42	90-02-24	24.705
W120-42	-97304.401	-30.865	-2926.126	17.129	90314.045863	-1666739.239347	106-33-16	89-56-34	25.238
合計				倍面積	1246.803652	-1246.803652			99.878
				面積	623.4018263	623.4018263			

面積（座標法）計算書

地番：W120-8-1

測点名	[1] X(i)	[2] X(i+1)-X(i-1)	[3] Y(i)	[4] Y(i+1)-Y(i-1)	[2]*[3]	[1]*[4]	方向角	夾角	距離
W120-47	-97273.113	-0.416	-2916.792	-26.461	1212.773976	2573954.680809	196-36-42	90-02-24	7.946
W120-23	-97280.727	-14.812	-2919.064	21.918	43237.911039	-2132208.015670	106-34-18	89-57-36	25.238
W120-35	-97287.926	0.416	-2894.874	26.461	-1203.660645	-2574346.629477	16-36-42	90-02-24	7.946
W120-48	-97280.312	14.812	-2892.603	-21.918	-42845.962371	2132198.902339	286-34-18	89-57-36	25.238
合計				倍面積	401.061998	-401.061998			66.368
				面積	200.5309993	200.5309993			

面積（座標法）計算書

地 番： W120-8-2

測点名	[1] X(i)	[2] X(i+1)-X(i-1)	[3] Y(i)	[4] Y(i+1)-Y(i-1)	[2]*[3]	[1]*[4]	方向角	夾 角	距 離
W120-45	-97265.499	-0.416	-2914.521	-26.461	1211.829505	2573753.205338	196-36-42	90-02-24	7.946
W120-47	-97273.113	-14.812	-2916.792	21.918	43204.264870	-2132041.130839	106-34-18	89-57-36	25.238
W120-48	-97280.312	0.416	-2892.603	26.461	-1202.716174	-2574145.154006	16-36-42	90-02-24	7.946
W120-46	-97272.698	14.812	-2890.331	-21.918	-42812.316202	2132032.017509	286-34-18	89-57-36	25.238
合計				倍面積	401.061998	-401.061998			66.368
				面 積	200.5309993	200.5309993			

面積（座標法）計算書

地 番： W120-8-3

測点名	[1] X(i)	[2] X(i+1)-X(i-1)	[3] Y(i)	[4] Y(i+1)-Y(i-1)	[2]*[3]	[1]*[4]	方向角	夾 角	距 離
W120-22	-97256.766	-1.535	-2911.915	-26.795	4469.049415	2605988.433263	196-36-42	90-02-24	9.113
W120-45	-97265.499	-15.931	-2914.521	21.584	46431.837130	-2099405.018567	106-34-18	89-57-36	25.238
W120-46	-97272.698	1.535	-2890.331	26.795	-4435.923048	-2606415.308896	16-36-42	90-02-24	9.113
W120-32	-97263.965	15.931	-2887.726	-21.584	-46004.961496	2099371.892200	286-34-18	89-57-36	25.238
合計				倍面積	460.002000	-460.002000			68.702
				面 積	230.0010000	230.0010000			

面積（座標法）計算書

地番：W120-9

測点名	[1] X(i)	[2] X(i+1)-X(i-1)	[3] Y(i)	[4] Y(i+1)-Y(i-1)	[2]*[3]	[1]*[4]	方向角	夾角	距離
W120-32	-97263.965	6.830	-2887.726	28.375	-19723.651124	-2759838.518452	16-36-42	90-02-24	14.639
W120-31	-97249.936	21.227	-2883.541	-20.004	-61207.851977	1945434.052358	286-34-18	89-57-36	25.238
W120-21	-97242.738	-6.830	-2907.730	-28.375	19860.285047	2759236.218609	196-36-42	90-02-24	14.639
W120-22	-97256.766	-21.227	-2911.915	20.004	61810.151820	-1945570.686280	106-34-18	89-57-36	25.238
合計				倍面積	738.933765	-738.933765			79.754
				面積	369.4668826	369.4668826			