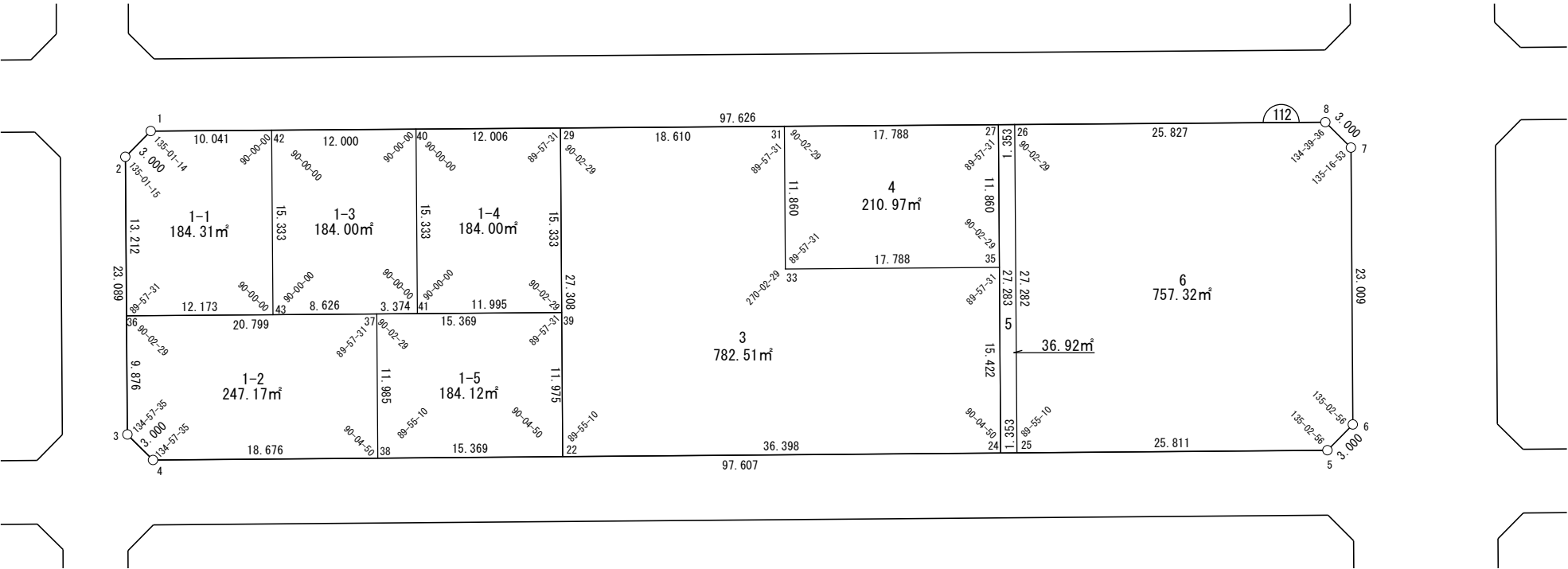


面積一覧表

地番名	地積
W112-1-1	184.31 m ²
W112-1-2	247.17 m ²
W112-1-3	184.00 m ²
W112-1-4	184.00 m ²
W112-1-5	184.12 m ²
W112-3	782.51 m ²
W112-4	210.97 m ²
W112-5	36.92 m ²
W112-6	757.32 m ²
合計	2771.32 m ²



世界測地系



座 標 一 覧 表

測 点 名	X 座 標	Y 座 標	測 点 名	X 座 標	Y 座 標
W112-1	-96926.374	-2929.884	W112-31	-96941.385	-2879.412
W112-2	-96927.801	-2932.522	W112-33	-96952.751	-2882.801
W112-5	-96980.328	-2844.116	W112-35	-96957.822	-2865.751
W112-6	-96978.900	-2841.478	W112-36	-96940.463	-2936.298
W112-7	-96956.852	-2834.896	W112-37	-96946.392	-2916.362
W112-8	-96954.206	-2836.309	W112-38	-96957.877	-2919.787
W112-22	-96962.249	-2905.053	W112-39	-96950.774	-2901.631
W112-24	-96972.601	-2870.158	W112-40	-96932.657	-2908.757
W112-25	-96972.986	-2868.861	W112-41	-96947.354	-2913.128
W112-26	-96946.843	-2861.064	W112-42	-96929.236	-2920.259
W112-27	-96946.457	-2862.361	W112-43	-96943.933	-2924.630
W112-29	-96936.080	-2897.249			

面積（座標法）計算書

地 番： W112-1-1

測点名	[1] X(i)	[2] X(i+1)-X(i-1)	[3] Y(i)	[4] Y(i+1)-Y(i-1)	[2]*[3]	[1]*[4]	方向角	夾 角	距 離
W112-42	-96929.236	17.559	-2920.259	-5.253	-51277.854819	509209.519081	286-33-50	90-00-00	10.041
W112-1	-96926.374	1.435	-2929.884	-12.263	-4204.272370	1188644.364677	241-35-04	135-01-14	3.000
W112-2	-96927.801	-14.089	-2932.522	-6.414	41316.266171	621741.985836	196-36-19	135-01-15	13.212
W112-36	-96940.463	-16.132	-2936.298	7.892	47367.402036	-765069.016993	106-33-50	89-57-31	12.173
W112-43	-96943.933	11.226	-2924.630	16.039	-32832.908466	-1554895.485152	16-33-50	90-00-00	15.333
合計				倍面積	368.632550	-368.632550			53.759
				面 積	184.3162754	184.3162754			

面積（座標法）計算書

地 番： W112-1-2

測点名	[1] X(i)	[2] X(i+1)-X(i-1)	[3] Y(i)	[4] Y(i+1)-Y(i-1)	[2]*[3]	[1]*[4]	方向角	夾 角	距 離
W112-37	-96946.392	17.415	-2916.362	-16.511	-50787.645938	1600664.128345	286-33-50	89-57-31	20.799
W112-36	-96940.463	-3.535	-2936.298	-22.758	10379.650228	2206195.149178	196-36-19	90-02-29	9.876
W112-3	-96949.927	-12.103	-2939.120	-1.394	35571.407918	135127.722499	151-33-54	134-57-35	3.000
W112-4	-96952.565	-7.950	-2937.692	19.333	23355.508866	-1874405.206939	106-31-29	134-57-35	18.676
W112-38	-96957.877	6.173	-2919.787	21.330	-18024.578561	-2068076.135597	16-36-19	90-04-50	11.985
合計				倍面積	494.342514	-494.342514			64.336
				面 積	247.1712571	247.1712571			

面積（座標法）計算書

地番：W112-1-3

測点名	[1] X(i)	[2] X(i+1)-X(i-1)	[3] Y(i)	[4] Y(i+1)-Y(i-1)	[2]*[3]	[1]*[4]	方向角	夾角	距離
W112-40	-96932.657	18.118	-2908.757	-7.131	-52700.368782	691238.047428	286-33-50	90-00-00	12.000
W112-42	-96929.236	-11.276	-2920.259	-15.874	32927.639373	1538611.757725	196-33-50	90-00-00	15.333
W112-43	-96943.933	-17.156	-2924.630	3.897	50174.468932	-377763.854322	106-33-50	90-00-00	8.626
W112-37	-96946.392	-3.421	-2916.362	11.502	9977.232242	-1115110.036538	106-33-50	180-00-00	3.374
W112-41	-96947.354	13.735	-2913.128	7.606	-40010.969764	-737343.916292	16-33-50	90-00-00	15.333
合計				倍面積	368.002000	-368.002000			54.666
				面積	184.0010000	184.0010000			

面積（座標法）計算書

地番：W112-1-4

測点名	[1] X(i)	[2] X(i+1)-X(i-1)	[3] Y(i)	[4] Y(i+1)-Y(i-1)	[2]*[3]	[1]*[4]	方向角	夾角	距離
W112-29	-96936.080	18.116	-2897.249	-7.126	-52487.321385	690750.146808	286-33-50	89-57-31	12.006
W112-40	-96932.657	-11.274	-2908.757	-15.879	32793.371441	1539178.353562	196-33-50	90-00-00	15.333
W112-41	-96947.354	-18.116	-2913.128	7.126	52774.986643	-690830.483549	106-33-50	90-00-00	11.995
W112-39	-96950.774	11.274	-2901.631	15.879	-32713.034699	-1539466.018820	16-36-19	90-02-29	15.333
合計				倍面積	368.002000	-368.002000			54.667
				面積	184.0010000	184.0010000			

面積（座標法）計算書

地番：W112-1-5

測点名	[1] X(i)	[2] X(i+1)-X(i-1)	[3] Y(i)	[4] Y(i+1)-Y(i-1)	[2]*[3]	[1]*[4]	方向角	夾角	距離
W112-37	-96946.392	-7.104	-2916.362	-18.156	20716.921630	1760204.464009	196-36-19	90-02-29	11.985
W112-38	-96957.877	-15.857	-2919.787	11.309	46298.170711	-1096537.705170	106-31-29	89-55-10	15.369
W112-22	-96962.249	7.104	-2905.053	18.156	-20636.583036	-1760492.365615	16-36-19	90-04-50	11.975
W112-39	-96950.774	15.857	-2901.631	-11.309	-46010.269105	1096457.366576	286-33-50	89-57-31	15.369
合計				倍面積	368.240200	-368.240200			54.698
				面積	184.1201001	184.1201001			

面積（座標法）計算書

地 番： W112-3

測点名	[1] X(i)	[2] X(i+1)-X(i-1)	[3] Y(i)	[4] Y(i+1)-Y(i-1)	[2]*[3]	[1]*[4]	方向角	夾 角	距 離
W112-29	-96936.080	-20.863	-2897.249	-25.641	60446.304013	2485563.206499	196-36-19	90-02-29	27.308
W112-22	-96962.249	-36.521	-2905.053	27.091	106096.564031	-2626802.391829	106-31-29	89-55-10	36.398
W112-24	-96972.601	4.427	-2870.158	39.302	-12705.150046	-3811231.920724	16-36-19	90-04-50	15.422
W112-35	-96957.822	19.851	-2865.751	-12.643	-56886.684275	1225823.143503	286-33-50	89-57-31	17.788
W112-33	-96952.751	16.437	-2882.801	-13.661	-47383.752316	1324461.083782	16-36-19	270-02-29	11.860
W112-31	-96941.385	16.671	-2879.412	-14.448	-48002.249314	1400621.846674	286-33-50	89-57-31	18.610
合計				倍面積	1565.032093	-1565.032093			127.386
				面 積	782.5160466	782.5160466			

面積（座標法）計算書

地番：W112-4

測点名	[1] X(i)	[2] X(i+1)-X(i-1)	[3] Y(i)	[4] Y(i+1)-Y(i-1)	[2]*[3]	[1]*[4]	方向角	夾角	距離
W112-31	-96941.385	-6.294	-2879.412	-20.440	18123.793697	1981436.385199	196-36-19	90-02-29	11.860
W112-33	-96952.751	-16.437	-2882.801	13.661	47383.752316	-1324461.083782	106-33-50	89-57-31	17.788
W112-35	-96957.822	6.294	-2865.751	20.440	-18037.808353	-1981772.343762	16-36-19	90-02-29	11.860
W112-27	-96946.457	16.437	-2862.361	-13.661	-47047.793752	1324375.098439	286-33-50	89-57-31	17.788
合計				倍面積	421.943907	-421.943907			59.296
				面積	210.9719535	210.9719535			

面積（座標法）計算書

地番：W112-5

測点名	[1] X(i)	[2] X(i+1)-X(i-1)	[3] Y(i)	[4] Y(i+1)-Y(i-1)	[2]*[3]	[1]*[4]	方向角	夾角	距離
W112-24	-96972.601	-26.530	-2870.158	-6.499	76144.590439	630240.966667	106-31-29	89-55-10	1.353
W112-25	-96972.986	25.759	-2868.861	9.094	-73898.880108	-881865.686359	16-36-19	90-04-50	27.282
W112-26	-96946.843	26.530	-2861.064	6.499	-75903.330663	-630073.554890	286-33-50	89-57-31	1.353
W112-27	-96946.457	-25.759	-2862.361	-9.094	73731.468330	881624.426583	196-36-19	90-02-29	27.283
合計				倍面積	73.847998	-73.847998			57.271
				面積	36.9239992	36.9239992			

面積（座標法）計算書

地 番： W112-6

測点名	[1] X(i)	[2] X(i+1)-X(i-1)	[3] Y(i)	[4] Y(i+1)-Y(i-1)	[2]*[3]	[1]*[4]	方向角	夾 角	距 離
W112-25	-96972.986	-33.485	-2868.861	16.948	96064.417657	-1643518.509459	106-31-29	89-55-10	25.811
W112-5	-96980.328	-5.913	-2844.116	27.383	16818.075490	-2655590.077008	61-34-25	135-02-56	3.000
W112-6	-96978.900	23.476	-2841.478	9.220	-66705.381515	-894165.568934	16-37-21	135-02-56	23.009
W112-7	-96956.852	24.694	-2834.896	5.169	-70005.537017	-501181.933229	331-54-14	135-16-53	3.000
W112-8	-96954.206	10.010	-2836.309	-26.168	-28390.377143	2537138.089390	286-33-50	134-39-36	25.827
W112-26	-96946.843	-18.781	-2861.064	-32.552	53733.450530	3155803.351238	196-36-19	90-02-29	27.282
合計				倍面積	1514.648002	-1514.648002			107.929
				面 積	757.3240011	757.3240011			