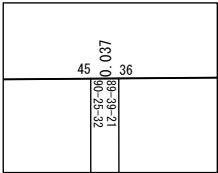


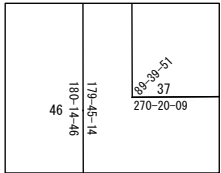
世界測地系

面積一覧表

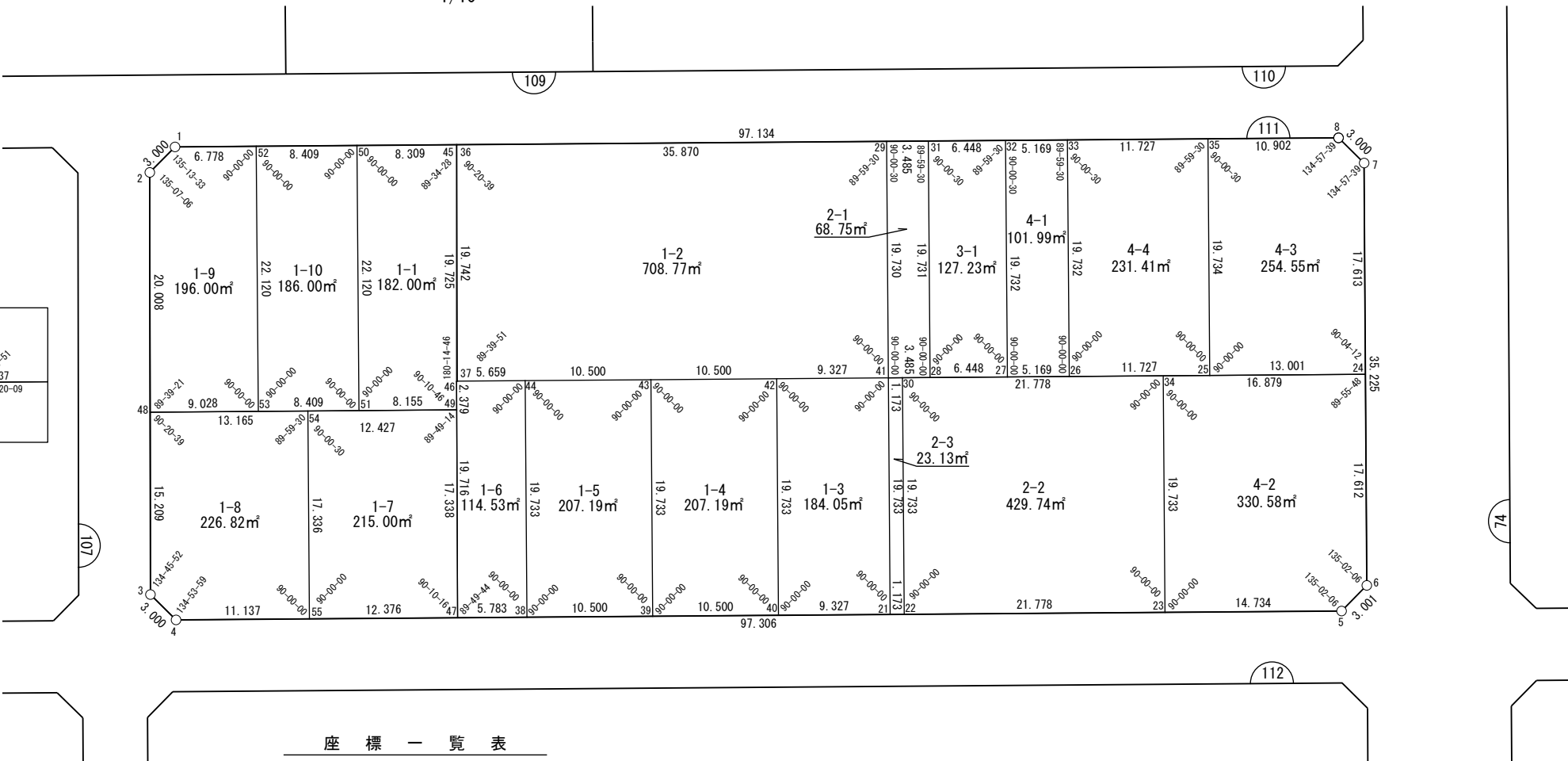
地番名	地積
W111-1-1	182.00 m ²
W111-1-2	708.77 m ²
W111-1-3	184.05 m ²
W111-1-4	207.19 m ²
W111-1-5	207.19 m ²
W111-1-6	114.53 m ²
W111-1-7	215.00 m ²
W111-1-8	226.82 m ²
W111-1-9	196.00 m ²
W111-1-10	186.00 m ²
W111-2-1	68.75 m ²
W111-2-2	429.74 m ²
W111-2-3	23.13 m ²
W111-3-1	127.23 m ²
W111-4-1	101.99 m ²
W111-4-2	330.58 m ²
W111-4-3	254.55 m ²
W111-4-4	231.41 m ²
合計	3994.93 m ²



1/10



1/10



座 標 一 覧 表

測 点 名	X 座 標	Y 座 標
W111-5	-96948.455	-2834.597
W111-6	-96947.027	-2831.957
W111-7	-96913.276	-2821.873
W111-8	-96910.637	-2823.301
W111-21	-96937.712	-2870.717
W111-22	-96938.046	-2869.594
W111-23	-96944.254	-2848.719
W111-25	-96926.446	-2839.376
W111-26	-96923.103	-2850.617
W111-27	-96921.629	-2855.571
W111-28	-96919.791	-2861.752
W111-29	-96899.886	-2859.467
W111-30	-96919.132	-2863.968
W111-31	-96900.879	-2856.127
W111-32	-96902.716	-2849.946

測 点 名	X 座 標	Y 座 標
W111-33	-96904.189	-2844.991
W111-34	-96925.340	-2843.094
W111-35	-96907.531	-2833.751
W111-36	-96889.665	-2893.850
W111-37	-96908.538	-2899.585
W111-38	-96929.066	-2899.786
W111-39	-96932.059	-2889.722
W111-40	-96935.052	-2879.658
W111-41	-96918.797	-2865.092
W111-42	-96916.138	-2874.032
W111-43	-96913.145	-2884.097
W111-44	-96910.152	-2894.161
W111-45	-96889.655	-2893.886
W111-46	-96908.536	-2899.652
W111-47	-96927.417	-2905.329

測 点 名	X 座 標	Y 座 標
W111-48	-96903.521	-2924.868
W111-49	-96910.814	-2900.337
W111-50	-96887.287	-2901.851
W111-51	-96908.490	-2908.154
W111-52	-96884.891	-2909.911
W111-53	-96906.094	-2916.214
W111-54	-96907.273	-2912.249
W111-55	-96923.889	-2917.191

面積（座標法）計算書

地番：W111-1-1

測点名	[1] X(i)	[2] X(i+1)-X(i-1)	[3] Y(i)	[4] Y(i+1)-Y(i-1)	[2]*[3]	[1]*[4]	方向角	夾角	距離
W111-45	-96889.655	21.249	-2893.886	-2.199	-61492.492816	213074.734229	286-33-20	89-34-28	8.309
W111-50	-96887.287	-18.835	-2901.851	-14.268	54657.508846	1382380.739697	196-33-20	90-00-00	22.120
W111-51	-96908.490	-23.527	-2908.154	1.514	68419.872367	-146744.367373	106-33-20	90-00-00	8.155
W111-49	-96910.814	-0.046	-2900.337	8.502	133.410604	-823947.529525	16-44-06	90-10-46	2.379
W111-46	-96908.536	21.159	-2899.652	6.451	-61354.298800	-625127.577228	16-58-52	180-14-46	19.742
合計				倍面積	364.000200	-364.000200			60.705
				面積	182.0001000	182.0001000			

面積（座標法）計算書

地 番： W111-1-2

測点名	[1] X(i)	[2] X(i+1)-X(i-1)	[3] Y(i)	[4] Y(i+1)-Y(i-1)	[2]*[3]	[1]*[4]	方向角	夾 角	距 離
W111-36	-96889.665	-8.652	-2893.850	-40.117	25038.357174	3886962.079349	196-53-59	90-20-39	19.725
W111-37	-96908.538	-29.132	-2899.585	28.759	84471.770755	-2786951.304762	106-33-50	89-39-51	35.986
W111-41	-96918.797	8.652	-2865.092	40.117	-24789.530414	-3888130.794507	16-33-50	90-00-00	19.730
W111-29	-96899.886	29.132	-2859.467	-28.759	-83303.055597	2786702.478002	286-33-20	89-59-30	35.870
合計				倍面積	1417.541917	-1417.541917			111.311
				面 積	708.7709586	708.7709586			

面積（座標法）計算書

地番：W111-1-3

測点名	[1] X(i)	[2] X(i+1)-X(i-1)	[3] Y(i)	[4] Y(i+1)-Y(i-1)	[2]*[3]	[1]*[4]	方向角	夾角	距離
W111-42	-96916.138	-16.255	-2874.032	-14.566	46717.397397	1411676.822919	196-33-50	90-00-00	19.733
W111-40	-96935.052	-21.573	-2879.658	3.315	62123.547048	-321317.069208	106-33-50	90-00-00	9.327
W111-21	-96937.712	16.255	-2870.717	14.566	-46663.515863	-1411991.057907	16-33-50	90-00-00	19.733
W111-41	-96918.797	21.573	-2865.092	-3.315	-61809.312060	321263.187674	286-33-50	90-00-00	9.327
合計				倍面積	368.116522	-368.116522			58.120
				面積	184.0582613	184.0582613			

面積（座標法）計算書

地番：W111-1-4

測点名	[1] X(i)	[2] X(i+1)-X(i-1)	[3] Y(i)	[4] Y(i+1)-Y(i-1)	[2]*[3]	[1]*[4]	方向角	夾角	距離
W111-43	-96913.145	-15.921	-2884.097	-15.690	45916.891140	1520554.544261	196-33-50	90-00-00	19.733
W111-39	-96932.059	-21.908	-2889.722	4.439	63306.647531	-430249.727225	106-33-50	90-00-00	10.500
W111-40	-96935.052	15.921	-2879.658	15.690	-45846.224270	-1520898.270394	16-33-50	90-00-00	19.733
W111-42	-96916.138	21.908	-2874.032	-4.439	-62962.921398	430179.060356	286-33-50	90-00-00	10.500
合計				倍面積	414.393001	-414.393001			60.466
				面積	207.1965008	207.1965008			

面積（座標法）計算書

地番：W111-1-5

測点名	[1] X(i)	[2] X(i+1)-X(i-1)	[3] Y(i)	[4] Y(i+1)-Y(i-1)	[2]*[3]	[1]*[4]	方向角	夾角	距離
W111-44	-96910.152	-15.921	-2894.161	-15.690	46077.121623	1520507.578670	196-33-50	90-00-00	19.733
W111-38	-96929.066	-21.908	-2899.786	4.439	63527.130807	-430236.440013	106-33-50	90-00-00	10.500
W111-39	-96932.059	15.921	-2889.722	15.690	-46006.454754	-1520851.304803	16-33-50	90-00-00	19.733
W111-43	-96913.145	21.908	-2884.097	-4.439	-63183.404675	430165.773144	286-33-50	90-00-00	10.500
合計				倍面積	414.393001	-414.393001			60.466
				面積	207.1965010	207.1965010			

面積（座標法）計算書

地 番： W111-1-6

測点名	[1] X(i)	[2] X(i+1)-X(i-1)	[3] Y(i)	[4] Y(i+1)-Y(i-1)	[2]*[3]	[1]*[4]	方向角	夾 角	距 離
W111-45	-96889.655	-18.871	-2893.886	-5.801	54610.089519	562083.217647	196-58-52	90-25-32	19.742
W111-46	-96908.536	-37.763	-2899.652	-11.443	109498.385543	1108926.459203	196-44-06	179-45-14	19.716
W111-47	-96927.417	-20.530	-2905.329	-0.135	59645.588029	13052.186431	106-33-50	89-49-44	5.783
W111-38	-96929.066	17.266	-2899.786	11.168	-50066.569087	-1082518.795005	16-33-50	90-00-00	19.733
W111-44	-96910.152	20.527	-2894.161	0.202	-59409.278573	-19563.568409	286-33-50	90-00-00	5.659
W111-37	-96908.538	20.486	-2899.585	0.310	-59402.193515	-30073.940740	16-53-59	270-20-09	19.725
W111-36	-96889.665	18.884	-2893.850	5.699	-54646.959638	-552134.621403	286-33-20	89-39-21	0.037
合計				倍面積	229.062277	-229.062277			90.395
				面 積	114.5311386	114.5311386			

面積（座標法）計算書

地番：W111-1-7

測点名	[1] X(i)	[2] X(i+1)-X(i-1)	[3] Y(i)	[4] Y(i+1)-Y(i-1)	[2]*[3]	[1]*[4]	方向角	夾角	距離
W111-49	-96910.814	20.144	-2900.337	-6.920	-58425.776806	670604.414018	286-33-20	89-49-14	12.427
W111-54	-96907.273	-13.075	-2912.249	-16.854	38078.548719	1633306.280681	196-33-50	90-00-30	17.336
W111-55	-96923.889	-20.144	-2917.191	6.920	58765.298361	-670694.892663	106-33-50	90-00-00	12.376
W111-47	-96927.417	13.075	-2905.329	16.854	-37988.070074	-1633645.802236	16-44-06	90-10-16	17.338
合計				倍面積	430.000200	-430.000200			59.477
				面積	215.0001000	215.0001000			

面積（座標法）計算書

地番：W111-1-8

測点名	[1] X(i)	[2] X(i+1)-X(i-1)	[3] Y(i)	[4] Y(i+1)-Y(i-1)	[2]*[3]	[1]*[4]	方向角	夾角	距離
W111-54	-96907.273	20.368	-2912.249	-7.677	-59315.671197	743959.083480	286-33-20	89-59-30	13.165
W111-48	-96903.521	-10.801	-2924.868	-17.040	31591.638364	1651281.902616	196-53-59	90-20-39	15.209
W111-3	-96918.074	-17.193	-2929.289	-2.997	50362.621217	290501.450593	151-39-51	134-45-52	3.000
W111-4	-96920.714	-5.815	-2927.865	12.098	17026.527141	-1172574.650293	106-33-50	134-53-59	11.137
W111-55	-96923.889	13.442	-2917.191	15.617	-39211.456438	-1513621.445483	16-33-50	90-00-00	17.336
合計				倍面積	453.659087	-453.659087			59.847
				面積	226.8295439	226.8295439			

面積（座標法）計算書

地番：W111-1-9

測点名	[1] X(i)	[2] X(i+1)-X(i-1)	[3] Y(i)	[4] Y(i+1)-Y(i-1)	[2]*[3]	[1]*[4]	方向角	夾角	距離
W111-52	-96884.891	23.135	-2909.911	-0.194	-67319.526504	18836.297113	286-33-20	90-00-00	6.778
W111-1	-96882.959	0.513	-2916.408	-9.141	-1495.918834	885595.191824	241-46-53	135-13-33	3.000
W111-2	-96884.378	-20.562	-2919.052	-8.460	60021.561120	819606.404938	196-53-59	135-07-06	20.008
W111-48	-96903.521	-21.716	-2924.868	2.838	63516.552515	-275002.846961	106-33-20	89-39-21	9.028
W111-53	-96906.094	18.631	-2916.214	14.957	-54330.666695	-1449427.048515	16-33-20	90-00-00	22.120
合計				倍面積	392.001600	-392.001600			60.934
				面積	196.0008000	196.0008000			

面積（座標法）計算書

地番：W111-1-10

測点名	[1] X(i)	[2] X(i+1)-X(i-1)	[3] Y(i)	[4] Y(i+1)-Y(i-1)	[2]*[3]	[1]*[4]	方向角	夾角	距離
W111-50	-96887.287	23.599	-2901.851	-1.757	-68481.050950	170239.101046	286-33-20	90-00-00	8.409
W111-52	-96884.891	-18.807	-2909.911	-14.363	54727.056987	1391560.634649	196-33-20	90-00-00	22.120
W111-53	-96906.094	-23.599	-2916.214	1.757	68820.005452	-170272.146743	106-33-20	90-00-00	8.409
W111-51	-96908.490	18.807	-2908.154	14.363	-54694.011289	-1391899.589151	16-33-20	90-00-00	22.120
合計				倍面積	372.000199	-372.000199			61.058
				面積	186.0001000	186.0001000			

面積（座標法）計算書

地番：W111-2-1

測点名	[1] X(i)	[2] X(i+1)-X(i-1)	[3] Y(i)	[4] Y(i+1)-Y(i-1)	[2]*[3]	[1]*[4]	方向角	夾角	距離
W111-31	-96900.879	19.905	-2856.127	2.285	-56850.518561	-221398.915160	286-33-20	89-59-30	3.485
W111-29	-96899.886	-17.918	-2859.467	-8.965	51237.209922	868697.846395	196-33-50	90-00-30	19.730
W111-41	-96918.797	-19.905	-2865.092	-2.285	57028.962745	221439.855189	106-33-50	90-00-00	3.485
W111-28	-96919.791	17.918	-2861.752	8.965	-51278.149950	-868876.290579	16-33-50	90-00-00	19.731
合計				倍面積	137.504155	-137.504155			46.431
				面積	68.7520778	68.7520778			

面積（座標法）計算書

地番：W111-2-2

測点名	[1] X(i)	[2] X(i+1)-X(i-1)	[3] Y(i)	[4] Y(i+1)-Y(i-1)	[2]*[3]	[1]*[4]	方向角	夾角	距離
W111-22	-96938.046	-25.123	-2869.594	15.249	72091.991131	-1478175.176220	106-33-50	90-00-00	21.778
W111-23	-96944.254	12.706	-2848.719	26.500	-36194.465313	-2569008.637506	16-33-50	90-00-00	19.733
W111-34	-96925.340	25.123	-2843.094	-15.249	-71426.242749	1477981.434055	286-33-50	90-00-00	21.778
W111-30	-96919.132	-12.706	-2863.968	-26.500	36388.207478	2568342.889124	196-33-50	90-00-00	19.733
合計				倍面積	859.490547	-859.490547			83.022
				面積	429.7452739	429.7452739			

面積（座標法）計算書

地番：W111-2-3

測点名	[1] X(i)	[2] X(i+1)-X(i-1)	[3] Y(i)	[4] Y(i+1)-Y(i-1)	[2]*[3]	[1]*[4]	方向角	夾角	距離
W111-41	-96918.797	-18.580	-2865.092	-6.750	53232.943783	654153.859514	196-33-50	90-00-00	19.733
W111-21	-96937.712	-19.248	-2870.717	-4.502	55256.723761	436383.653402	106-33-50	90-00-00	1.173
W111-22	-96938.046	18.580	-2869.594	6.750	-53316.584480	-654283.776689	16-33-50	90-00-00	19.733
W111-30	-96919.132	19.248	-2863.968	4.502	-55126.806585	-436300.012705	286-33-50	90-00-00	1.173
合計				倍面積	46.276478	-46.276478			41.812
				面積	23.1382394	23.1382394			

面積（座標法）計算書

地番：W111-3-1

測点名	[1] X(i)	[2] X(i+1)-X(i-1)	[3] Y(i)	[4] Y(i+1)-Y(i-1)	[2]*[3]	[1]*[4]	方向角	夾角	距離
W111-28	-96919.791	-20.750	-2861.752	0.556	59381.771441	-53858.889911	106-33-50	90-00-00	6.448
W111-27	-96921.629	17.074	-2855.571	11.806	-48757.384548	-1144239.860283	16-33-50	90-00-00	19.732
W111-32	-96902.716	20.750	-2849.946	-0.556	-59136.798827	53849.401526	286-33-20	89-59-30	6.448
W111-31	-96900.879	-17.074	-2856.127	-11.806	48766.872934	1143994.887669	196-33-50	90-00-30	19.731
合計				倍面積	254.460999	-254.460999			52.359
				面積	127.2304998	127.2304998			

面積（座標法）計算書

地番：W111-4-1

測点名	[1] X(i)	[2] X(i+1)-X(i-1)	[3] Y(i)	[4] Y(i+1)-Y(i-1)	[2]*[3]	[1]*[4]	方向角	夾角	距離
W111-27	-96921.629	-20.386	-2855.571	-0.671	58214.674795	65015.183907	106-33-50	90-00-00	5.169
W111-26	-96923.103	17.440	-2850.617	10.580	-49714.561324	-1025428.137455	16-33-50	90-00-00	19.732
W111-33	-96904.189	20.386	-2844.991	0.671	-57998.991061	-65003.485173	286-33-20	89-59-30	5.169
W111-32	-96902.716	-17.440	-2849.946	-10.580	49702.862590	1025212.453721	196-33-50	90-00-30	19.732
合計				倍面積	203.985000	-203.985000			49.802
				面積	101.9925002	101.9925002			

面積（座標法）計算書

地番：W111-4-2

測点名	[1] X(i)	[2] X(i+1)-X(i-1)	[3] Y(i)	[4] Y(i+1)-Y(i-1)	[2]*[3]	[1]*[4]	方向角	夾角	距離
W111-23	-96944.254	-23.114	-2848.719	8.497	65846.690047	-823704.608418	106-33-50	90-00-00	14.734
W111-5	-96948.455	-2.773	-2834.597	16.762	7859.752221	-1625090.320511	61-35-56	135-02-06	3.001
W111-6	-96947.027	18.303	-2831.957	7.682	-51832.104043	-744718.502681	16-38-02	135-02-06	17.612
W111-24	-96930.152	21.687	-2826.915	-11.137	-61307.068407	1079493.464233	286-33-50	89-55-48	16.879
W111-34	-96925.340	-14.102	-2843.094	-21.804	40093.895215	2113358.802344	196-33-50	90-00-00	19.733
合計				倍面積	661.165033	-661.165033			71.959
				面積	330.5825167	330.5825167			

面積（座標法）計算書

地番：W111-4-3

測点名	[1] X(i)	[2] X(i+1)-X(i-1)	[3] Y(i)	[4] Y(i+1)-Y(i-1)	[2]*[3]	[1]*[4]	方向角	夾角	距離
W111-25	-96926.446	-22.621	-2839.376	6.835	64230.890627	-662513.368626	106-33-50	90-00-00	13.001
W111-24	-96930.152	13.170	-2826.915	17.503	-37229.649088	-1696568.629169	16-38-02	90-04-12	17.613
W111-7	-96913.276	19.515	-2821.873	3.615	-55069.130523	-350303.203168	331-35-41	134-57-39	3.000
W111-8	-96910.637	5.745	-2823.301	-11.877	-16221.201728	1151016.165525	286-33-20	134-57-39	10.902
W111-35	-96907.531	-15.809	-2833.751	-16.076	44798.196714	1557859.929438	196-33-50	90-00-30	19.734
合計				倍面積 面積	509.106001 254.5530005	-509.106001 254.5530005			64.250

面積（座標法）計算書

地番：W111-4-4

測点名	[1] X(i)	[2] X(i+1)-X(i-1)	[3] Y(i)	[4] Y(i+1)-Y(i-1)	[2]*[3]	[1]*[4]	方向角	夾角	距離
W111-26	-96923.103	-22.257	-2850.617	5.615	63445.408982	-544223.454424	106-33-50	90-00-00	11.727
W111-25	-96926.446	15.572	-2839.376	16.866	-44214.661434	-1634793.645998	16-33-50	90-00-00	19.734
W111-35	-96907.531	22.257	-2833.751	-5.615	-63070.019584	544136.017821	286-33-20	89-59-30	11.727
W111-33	-96904.189	-15.572	-2844.991	-16.866	44302.098036	1634418.256601	196-33-50	90-00-30	19.732
合計				倍面積	462.825999	-462.825999			62.920
				面積	231.4129998	231.4129998			