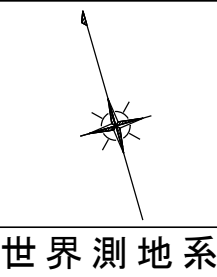
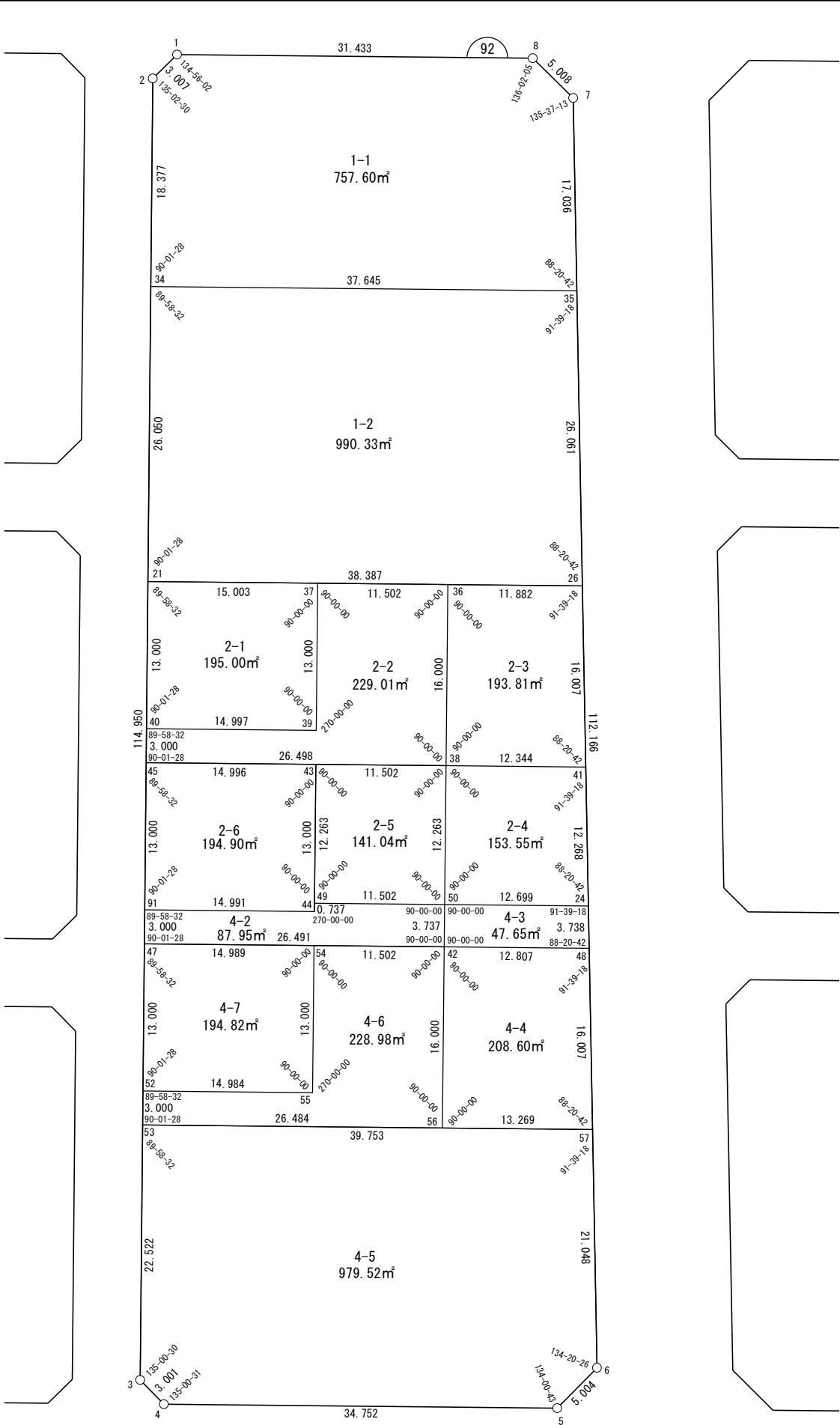


面積一覧表

地番名	面積
W92-1-1	757.60 m <sup>2</sup>
W92-1-2	990.33 m <sup>2</sup>
W92-2-1	195.00 m <sup>2</sup>
W92-2-2	229.01 m <sup>2</sup>
W92-2-3	193.81 m <sup>2</sup>
W92-2-4	153.55 m <sup>2</sup>
W92-2-5	141.04 m <sup>2</sup>
W92-4-3	47.65 m <sup>2</sup>
W92-4-4	208.60 m <sup>2</sup>
W92-4-6	228.98 m <sup>2</sup>
W92-4-7	194.82 m <sup>2</sup>
W92-2-6	194.90 m <sup>2</sup>
W92-4-2	87.95 m <sup>2</sup>
W92-4-5	979.52 m <sup>2</sup>
合計	4602.76 m <sup>2</sup>

座 標 一 覧 表

測 点 名	X 座 標	Y 座 標
W92-1	-96731.378	-2807.901
W92-2	-96732.812	-2810.545
W92-3	-96842.996	-2843.299
W92-4	-96845.635	-2841.870
W92-5	-96855.548	-2808.561
W92-6	-96853.090	-2804.202
W92-7	-96744.708	-2775.313
W92-8	-96740.347	-2777.776
W92-21	-96775.397	-2823.204
W92-24	-96813.672	-2793.695
W92-26	-96786.351	-2786.413
W92-34	-96750.427	-2815.781
W92-35	-96761.169	-2779.701
W92-36	-96782.961	-2797.801
W92-37	-96779.679	-2808.825
W92-38	-96798.295	-2802.367
W92-39	-96792.138	-2812.534
W92-40	-96787.858	-2826.908
W92-41	-96801.818	-2790.536
W92-42	-96813.630	-2806.932
W92-43	-96795.013	-2813.390
W92-44	-96807.472	-2817.100
W92-45	-96790.734	-2827.763
W92-47	-96806.071	-2832.322
W92-48	-96817.285	-2794.658
W92-49	-96806.767	-2816.889
W92-50	-96810.049	-2805.866
W92-52	-96818.532	-2836.026
W92-53	-96821.408	-2836.881
W92-54	-96810.348	-2817.956
W92-55	-96822.808	-2821.665
W92-56	-96828.965	-2811.498
W92-57	-96832.751	-2798.781
W92-91	-96803.195	-2831.467



# 面積（座標法）計算書

地番：W92-1-1

測点名	[1] X(i)	[2] X(i+1)-X(i-1)	[3] Y(i)	[4] Y(i+1)-Y(i-1)	[2]*[3]	[1]*[4]	方向角	夾角	距離
W92-35	-96761.169	5.719	-2779.701	40.468	-15897.751446	-3915713.461440	14-55-30	88-20-42	17.036
W92-7	-96744.708	20.822	-2775.313	1.925	-57787.419286	-186251.912932	330-32-43	135-37-13	5.008
W92-8	-96740.347	13.330	-2777.776	-32.588	-37027.492878	3152598.212600	286-34-48	136-02-05	31.433
W92-1	-96731.378	7.535	-2807.901	-32.769	-21157.536850	3169790.355022	241-30-50	134-56-02	3.007
W92-2	-96732.812	-19.049	-2810.545	-7.880	53538.454936	762213.257493	196-33-20	135-02-30	18.377
W92-34	-96750.427	-28.357	-2815.781	30.844	79846.947483	-2984151.652700	106-34-48	90-01-28	37.645
合計				倍面積	1515.201956	-1515.201956			112.506
				面積	757.6009783	757.6009783			

# 面積（座標法）計算書

地番：W92-1-2

測点名	[1] X(i)	[2] X(i+1)-X(i-1)	[3] Y(i)	[4] Y(i+1)-Y(i-1)	[2]*[3]	[1]*[4]	方向角	夾角	距離
W92-26	-96786.351	14.228	-2786.413	43.503	-39645.895041	-4210493.888770	14-55-30	88-20-42	26.061
W92-35	-96761.169	35.924	-2779.701	-29.368	-99858.623975	2841672.418578	286-34-48	91-39-18	37.645
W92-34	-96750.427	-14.228	-2815.781	-43.503	40063.750091	4208931.077776	196-33-20	89-58-32	26.050
W92-21	-96775.397	-35.924	-2823.204	29.368	101421.434969	-2842090.273627	106-34-48	90-01-28	38.387
合計				倍面積	1980.666043	-1980.666043			128.143
				面積	990.3330216	990.3330216			

面積（座標法）計算書

地番：W92-2-1

測点名	[1] X(i)	[2] X(i+1)-X(i-1)	[3] Y(i)	[4] Y(i+1)-Y(i-1)	[2]*[3]	[1]*[4]	方向角	夾角	距離
W92-21	-96775.397	-8.180	-2823.204	-18.083	23093.624542	1750035.548111	196-33-20	89-58-32	13.000
W92-40	-96787.858	-16.741	-2826.908	10.670	47324.241780	-1032690.909854	106-34-48	90-01-28	14.997
W92-39	-96792.138	8.180	-2812.534	18.083	-23006.347633	-1750338.277023	16-34-48	90-00-00	13.000
W92-37	-96779.679	16.741	-2808.825	-10.670	-47021.512868	1032603.632945	286-34-48	90-00-00	15.003
合計				倍面積	390.005821	-390.005821			56.000
				面積	195.0029105	195.0029105			

# 面積（座標法）計算書

地 番： W92-2-2

測点名	[1] X(i)	[2] X(i+1)-X(i-1)	[3] Y(i)	[4] Y(i+1)-Y(i-1)	[2]*[3]	[1]*[4]	方向角	夾 角	距 離
W92-40	-96787.858	1.404	-2826.908	-15.229	-3968.767488	1473955.483974	196-33-20	89-58-32	3.000
W92-45	-96790.734	-10.437	-2827.763	24.541	29513.063833	-2375382.652275	106-34-48	90-01-28	26.498
W92-38	-96798.295	7.774	-2802.367	29.962	-21784.198506	-2900260.372372	16-34-48	90-00-00	16.000
W92-36	-96782.961	18.617	-2797.801	-6.458	-52086.185911	625019.562217	286-34-48	90-00-00	11.502
W92-37	-96779.679	-9.177	-2808.825	-14.733	25777.779029	1425871.662842	196-34-48	90-00-00	13.000
W92-39	-96792.138	-8.180	-2812.534	-18.083	23006.347633	1750338.277023	286-34-48	270-00-00	14.997
合計				倍面積	458.038590	-458.038590			84.997
				面 積	229.0192950	229.0192950			

# 面積（座標法）計算書

地番：W92-2-3

測点名	[1] X(i)	[2] X(i+1)-X(i-1)	[3] Y(i)	[4] Y(i+1)-Y(i-1)	[2]*[3]	[1]*[4]	方向角	夾角	距離
W92-36	-96782.961	-11.944	-2797.801	-15.954	33417.505525	1544038.327237	196-34-48	90-00-00	16.000
W92-38	-96798.295	-18.857	-2802.367	7.265	52844.873767	-703277.481415	106-34-48	90-00-00	12.344
W92-41	-96801.818	11.944	-2790.536	15.954	-33330.726209	-1544339.168288	14-55-30	88-20-42	16.007
W92-26	-96786.351	18.857	-2786.413	-7.265	-52544.032716	703190.702099	286-34-48	91-39-18	11.882
合計				倍面積	387.620367	-387.620367			56.233
				面積	193.8101836	193.8101836			

# 面積（座標法）計算書

地番：W92-2-4

測点名	[1] X(i)	[2] X(i+1)-X(i-1)	[3] Y(i)	[4] Y(i+1)-Y(i-1)	[2]*[3]	[1]*[4]	方向角	夾角	距離
W92-38	-96798.295	-8.231	-2802.367	-15.330	23065.545957	1483949.718461	196-34-48	90-00-00	12.263
W92-50	-96810.049	-15.377	-2805.866	8.671	43145.176148	-839469.635259	106-34-48	90-00-00	12.699
W92-24	-96813.672	8.231	-2793.695	15.330	-22994.174699	-1484185.449527	14-55-30	88-20-42	12.268
W92-41	-96801.818	15.377	-2790.536	-8.671	-42909.445082	839398.264001	286-34-48	91-39-18	12.344
合計				倍面積	307.102323	-307.102323			49.574
				面積	153.5511618	153.5511618			

# 面積（座標法）計算書

地番：W92-2-5

測点名	[1] X(i)	[2] X(i+1)-X(i-1)	[3] Y(i)	[4] Y(i+1)-Y(i-1)	[2]*[3]	[1]*[4]	方向角	夾角	距離
W92-43	-96795.013	-8.471	-2813.390	-14.523	23832.618414	1405743.165111	196-34-48	90-00-00	12.263
W92-49	-96806.767	-15.035	-2816.889	7.524	42352.708997	-728402.348817	106-34-48	90-00-00	11.502
W92-50	-96810.049	8.471	-2805.866	14.523	-23768.879095	-1405961.520739	16-34-48	90-00-00	12.263
W92-38	-96798.295	15.035	-2802.367	-7.524	-42134.353369	728338.609497	286-34-48	90-00-00	11.502
合計				倍面積	282.094946	-282.094946			47.530
				面積	141.0474734	141.0474734			



面積（座標法）計算書

地番：W92-2-6

測点名	[1] X(i)	[2] X(i+1)-X(i-1)	[3] Y(i)	[4] Y(i+1)-Y(i-1)	[2]*[3]	[1]*[4]	方向角	夾角	距離
W92-45	-96790.734	-8.181	-2827.763	-18.077	23135.333193	1749667.792031	196-33-20	89-58-32	13.000
W92-91	-96803.195	-16.738	-2831.467	10.663	47393.940945	-1032231.735111	106-34-48	90-01-28	14.991
W92-44	-96807.472	8.181	-2817.100	18.077	-23048.092261	-1749970.367099	16-34-48	90-00-00	13.000
W92-43	-96795.013	16.738	-2813.390	-10.663	-47091.365877	1032144.494179	286-34-48	90-00-00	14.996
合計				倍面積	389.816000	-389.816000			55.987
				面積	194.9080000	194.9080000			

# 面積（座標法）計算書

地 番： W92-4-2

測点名	[1] X(i)	[2] X(i+1)-X(i-1)	[3] Y(i)	[4] Y(i+1)-Y(i-1)	[2]*[3]	[1]*[4]	方向角	夾 角	距 離
W92-91	-96803.195	1.402	-2831.467	-15.222	-3968.546965	1473566.228644	196-33-20	89-58-32	3.000
W92-47	-96806.071	-10.435	-2832.322	24.535	29556.223873	-2375113.837725	106-34-48	90-01-28	26.491
W92-42	-96813.630	-3.978	-2806.932	26.456	11165.292715	-2561305.989120	16-34-48	90-00-00	3.737
W92-50	-96810.049	6.864	-2805.866	-9.957	-19258.406815	963961.733255	286-34-48	90-00-00	11.502
W92-49	-96806.767	2.576	-2816.889	-11.234	-7256.784910	1087503.806522	196-34-48	90-00-00	0.737
W92-44	-96807.472	3.572	-2817.100	-14.578	-10061.863105	1411212.143631	286-34-48	270-00-00	14.991
合計				倍面積	175.914791	-175.914791			60.458
				面 積	87.9573959	87.9573959			

# 面積（座標法）計算書

地番：W92-4-3

測点名	[1] X(i)	[2] X(i+1)-X(i-1)	[3] Y(i)	[4] Y(i+1)-Y(i-1)	[2]*[3]	[1]*[4]	方向角	夾角	距離
W92-50	-96810.049	0.042	-2805.866	-13.237	-117.890237	1281469.422743	196-34-48	90-00-00	3.737
W92-42	-96813.630	-7.236	-2806.932	11.208	20310.777919	-1085062.220684	106-34-48	90-00-00	12.807
W92-48	-96817.285	-0.042	-2794.658	13.237	117.419337	-1281565.204422	14-55-30	88-20-42	3.738
W92-24	-96813.672	7.236	-2793.695	-11.208	-20214.996239	1085062.691585	286-34-48	91-39-18	12.699
合計				倍面積	95.310778	-95.310778			32.981
				面積	47.6553893	47.6553893			

面積（座標法）計算書

地番：W92-4-4

測点名	[1] X(i)	[2] X(i+1)-X(i-1)	[3] Y(i)	[4] Y(i+1)-Y(i-1)	[2]*[3]	[1]*[4]	方向角	夾角	距離
W92-42	-96813.630	-11.680	-2806.932	-16.840	32786.311474	1630317.491070	196-34-48	90-00-00	16.000
W92-56	-96828.965	-19.121	-2811.498	8.151	53759.072155	-789298.493072	106-34-48	90-00-00	13.269
W92-57	-96832.751	11.680	-2798.781	16.840	-32691.098392	-1630639.486487	14-55-30	88-20-42	16.007
W92-48	-96817.285	19.121	-2794.658	-8.151	-53437.076738	789203.279990	286-34-48	91-39-18	12.807
合計				倍面積	417.208499	-417.208499			58.083
				面積	208.6042495	208.6042495			

## 面 積 ( 座 標 法 ) 計 算 書

地 番 : W92-4-5

測点名	[1] X(i)	[2] X(i+1)-X(i-1)	[3] Y(i)	[4] Y(i+1)-Y(i-1)	[2]*[3]	[1]*[4]	方向角	夾 角	距 離
W92-53	-96821.408	-10.245	-2836.881	-44.518	29064.268085	4310287.925988	196-33-20	89-58-32	22.522
W92-3	-96842.996	-24.228	-2843.299	-4.989	68886.262176	483120.298160	151-33-50	135-00-30	3.001
W92-4	-96845.635	-12.551	-2841.870	34.738	35668.547799	-3364184.233423	106-34-21	135-00-31	34.752
W92-5	-96855.548	-7.454	-2808.561	37.668	20936.303982	-3648341.783976	60-35-04	134-00-43	5.004
W92-6	-96853.090	22.796	-2804.202	9.780	-63925.240348	-947255.161428	14-55-30	134-20-26	21.048
W92-57	-96832.751	31.682	-2798.781	-32.679	-88671.097294	3164413.910279	286-34-48	91-39-18	39.753
合計				倍面積	1959.044400	-1959.044400			126.080
				面 積	979.5222002	979.5222002			

# 面積（座標法）計算書

地番：W92-4-6

測点名	[1] X(i)	[2] X(i+1)-X(i-1)	[3] Y(i)	[4] Y(i+1)-Y(i-1)	[2]*[3]	[1]*[4]	方向角	夾角	距離
W92-54	-96810.348	-9.177	-2817.956	-14.733	25861.580667	1426323.522276	196-34-48	90-00-00	13.000
W92-55	-96822.808	-8.184	-2821.665	-18.070	23092.041969	1749624.594790	286-34-48	270-00-00	14.984
W92-52	-96818.532	1.400	-2836.026	-15.216	-3970.240578	1473157.114437	196-33-20	89-58-32	3.000
W92-53	-96821.408	-10.433	-2836.881	24.528	29597.441128	-2374864.385927	106-34-48	90-01-28	26.484
W92-56	-96828.965	7.777	-2811.498	29.949	-21866.410910	-2899913.669399	16-34-48	90-00-00	16.000
W92-42	-96813.630	18.617	-2806.932	-6.458	-52256.450411	625214.861958	286-34-48	90-00-00	11.502
合計				倍面積	457.961863	-457.961863			84.970
				面積	228.9809319	228.9809319			

# 面積（座標法）計算書

地番：W92-4-7

測点名	[1] X(i)	[2] X(i+1)-X(i-1)	[3] Y(i)	[4] Y(i+1)-Y(i-1)	[2]*[3]	[1]*[4]	方向角	夾角	距離
W92-47	-96806.071	-8.184	-2832.322	-18.070	23179.253278	1749322.155639	196-33-20	89-58-32	13.000
W92-52	-96818.532	-16.737	-2836.026	10.657	47465.825656	-1031749.979185	106-34-48	90-01-28	14.984
W92-55	-96822.808	8.184	-2821.665	18.070	-23092.041969	-1749624.594790	16-34-48	90-00-00	13.000
W92-54	-96810.348	16.737	-2817.956	-10.657	-47163.386504	1031662.767876	286-34-48	90-00-00	14.989
合計				倍面積	389.650460	-389.650460			55.973
				面積	194.8252304	194.8252304			