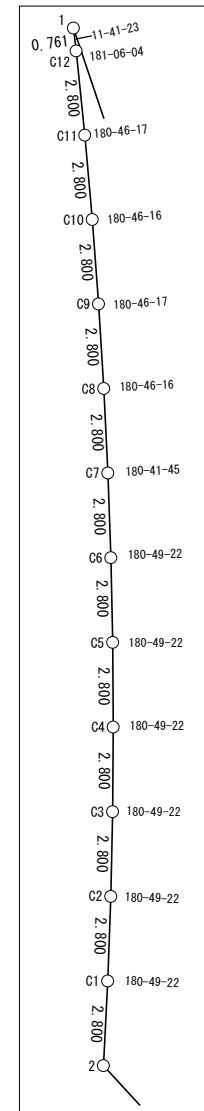
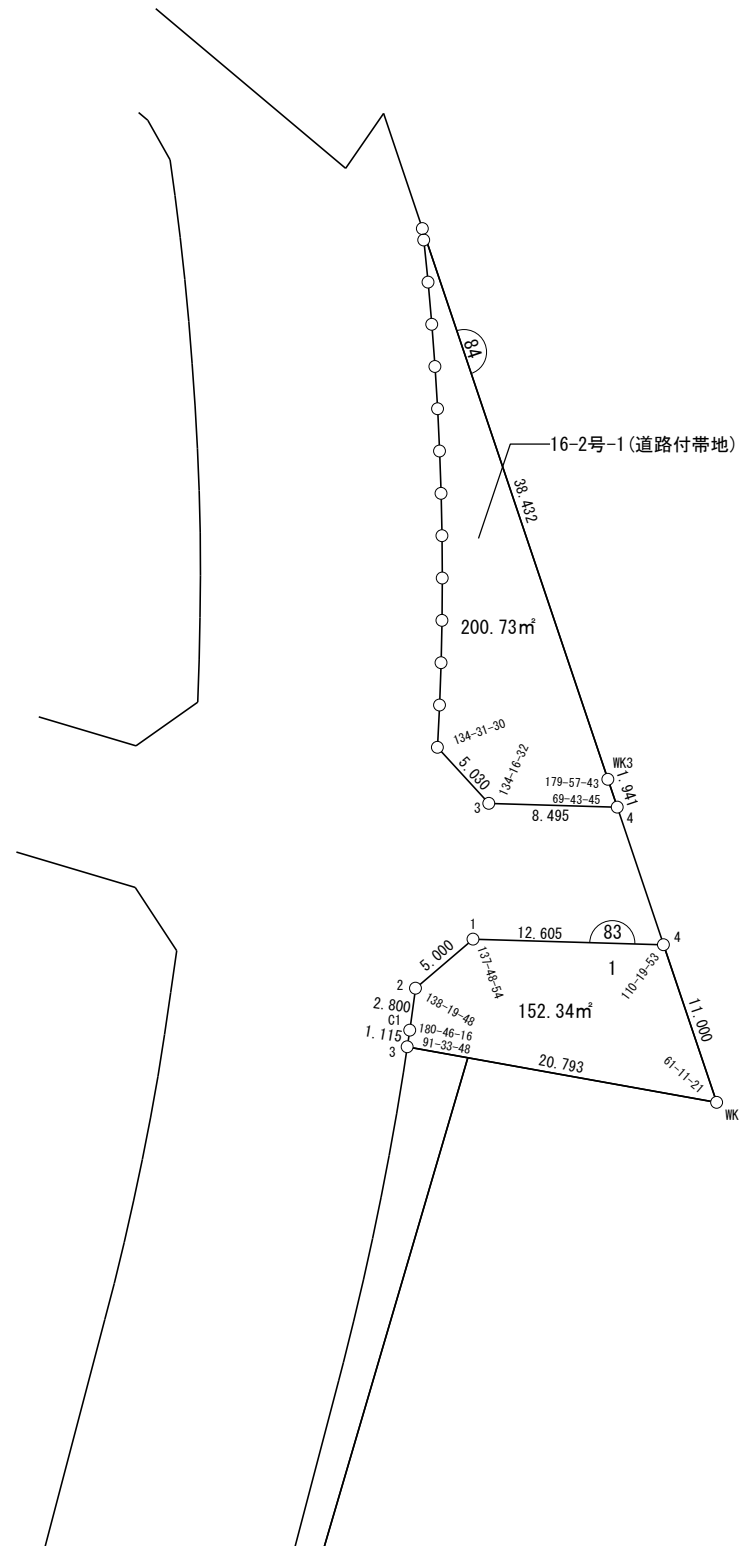


測 點 名	X 座 標	Y 座 標
W83-1	-96807.141	-2542.436
W83-2	-96810.388	-2546.239
W83-3	-96814.265	-2546.787
W83-4	-96807.513	-2529.837
W83-C1	-96813.162	-2546.620
W84-1	-96760.152	-2545.785
W84-2	-96794.459	-2544.791
W84-3	-96798.162	-2541.387
W84-4	-96798.413	-2532.896
W84-C1	-96791.662	-2544.650
W84-C2	-96788.864	-2544.549
W84-C3	-96786.064	-2544.488
W84-C4	-96783.264	-2544.468
W84-C5	-96780.464	-2544.487
W84-C6	-96777.664	-2544.547
W84-C7	-96774.865	-2544.647
W84-C8	-96772.069	-2544.781
W84-C9	-96769.274	-2544.953
W84-C10	-96766.482	-2545.162
W84-C11	-96763.693	-2545.409
W84-C12	-96760.907	-2545.693
WK2	-96817.936	-2526.321
WK3	-96796.573	-2533.515

地番名	面積
1	152.34 m <sup>2</sup>
合計	152.34 m <sup>2</sup>

地番名	面積
号-1(道路付帯地)	200.73 m <sup>2</sup>
合計	200.73 m <sup>2</sup>



# 面積（座標法）計算書

地番：W83-1

測点名	[1] X(i)	[2] X(i+1)-X(i-1)	[3] Y(i)	[4] Y(i+1)-Y(i-1)	[2]*[3]	[1]*[4]	方向角	夾角	距離
W83-1	-96807.141	-2.875	-2542.436	-16.402	7310.131644	1587793.917555	229-30-18	137-48-54	5.000
W83-2	-96810.388	-6.021	-2546.239	-4.184	15330.386237	405059.776487	187-50-06	138-19-48	2.800
W83-C1	-96813.162	-3.876	-2546.620	-0.549	9871.916048	53108.712015	188-36-22	180-46-16	1.115
W83-3	-96814.265	-4.774	-2546.787	20.299	12157.849938	-1965269.047920	100-10-10	91-33-48	20.793
WK2	-96817.936	6.752	-2526.321	16.950	-17057.022101	-1641082.297184	341-21-31	61-11-21	11.000
W83-4	-96807.513	10.795	-2529.837	-16.115	-27308.568561	1560084.245841	271-41-24	110-19-53	12.605
合計				倍面積	304.693205	-304.693205			53.313
				面積	152.3466028	152.3466028			

## 面 積 ( 座 標 法 ) 計 算 書

地 番 : W84-道路付帯地

測点名	[1] X(i)	[2] X(i+1)-X(i-1)	[3] Y(i)	[4] Y(i+1)-Y(i-1)	[2]*[3]	[1]*[4]	方向角	夾 角	距 離
W84-1	-96760.152	35.666	-2545.785	-12.179	-90798.032008	1178399.860925	173-04-15	11-41-23	0.761
W84-C12	-96760.907	-3.541	-2545.693	0.376	9013.134757	-36389.619439	174-10-19	181-06-04	2.800
W84-C11	-96763.693	-5.575	-2545.409	0.531	14189.603844	-51392.726077	174-56-36	180-46-17	2.800
W84-C10	-96766.482	-5.581	-2545.162	0.456	14205.137850	-44128.583204	175-42-52	180-46-16	2.800
W84-C9	-96769.274	-5.587	-2544.953	0.381	14218.305279	-36856.039205	176-29-09	180-46-17	2.800
W84-C8	-96772.069	-5.591	-2544.781	0.306	14229.104305	-29576.379609	177-15-25	180-46-16	2.800
W84-C7	-96774.865	-5.595	-2544.647	0.234	14238.030061	-22648.754022	177-57-10	180-41-45	2.800
W84-C6	-96777.664	-5.598	-2544.547	0.160	14244.832206	-15472.590326	178-46-32	180-49-22	2.800
W84-C5	-96780.464	-5.600	-2544.487	0.079	14248.870166	-7691.182156	179-35-54	180-49-22	2.800
W84-C4	-96783.264	-5.600	-2544.468	-0.001	14250.194809	92.253807	180-25-16	180-49-22	2.800
W84-C3	-96786.064	-5.600	-2544.488	-0.081	14248.806039	7876.130501	181-14-38	180-49-22	2.800
W84-C2	-96788.864	-5.598	-2544.549	-0.162	14244.703436	15658.821778	182-04-00	180-49-22	2.800
W84-C1	-96791.662	-5.595	-2544.650	-0.242	14237.888034	23438.730151	182-53-22	180-49-22	2.800
W84-2	-96794.459	-6.500	-2544.791	3.263	16541.689042	-315805.328383	137-24-52	134-31-30	5.030
W84-3	-96798.162	-3.954	-2541.387	11.895	10048.606348	-1151418.836813	91-41-24	134-16-32	8.495
W84-4	-96798.413	1.589	-2532.896	7.873	-4025.220401	-762075.232682	341-25-09	69-43-45	1.941
WK3	-96796.573	38.261	-2533.515	-12.889	-96934.174084	1247587.995070	341-22-52	179-57-43	38.432
合計				倍面積	401.479687	-401.479687			88.259
				面 積	200.7398437	200.7398437			