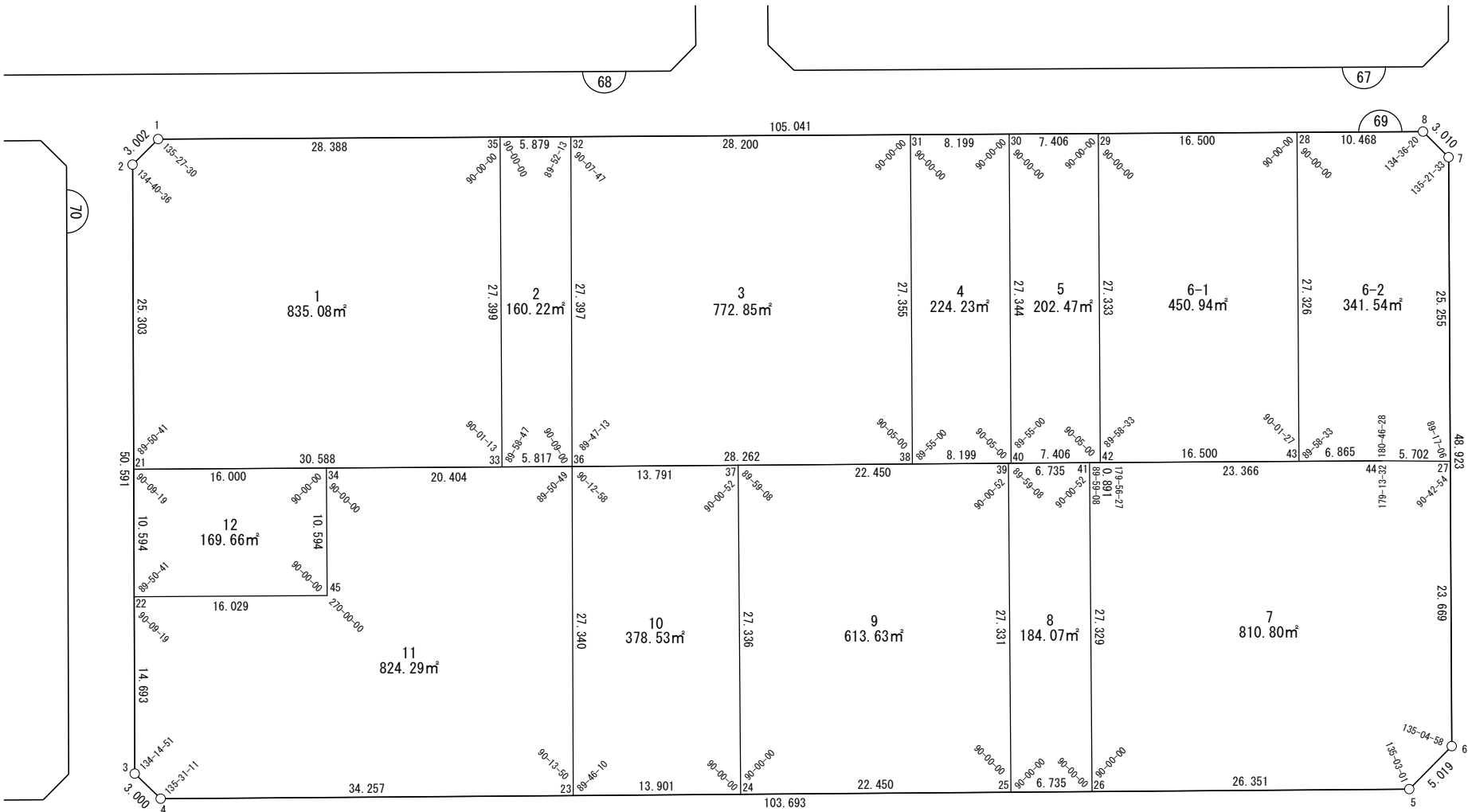


面積一覧表

地番名	地積
W69-1	835.08 m <sup>2</sup>
W69-2	160.22 m <sup>2</sup>
W69-3	772.85 m <sup>2</sup>
W69-4	224.23 m <sup>2</sup>
W69-5	202.47 m <sup>2</sup>
W69-6-1	450.94 m <sup>2</sup>
W69-6-2	341.54 m <sup>2</sup>
W69-7	810.80 m <sup>2</sup>
W69-8	184.07 m <sup>2</sup>
W69-9	613.63 m <sup>2</sup>
W69-10	378.53 m <sup>2</sup>
W69-11	824.29 m <sup>2</sup>
W69-12	169.66 m <sup>2</sup>
合計	5968.31 m <sup>2</sup>



世界測地系



座 標 一 覧 表

測 点 名	X 座 標	Y 座 標
W69-1	-97087.976	-2499.979
W69-2	-97089.380	-2502.633
W69-3	-97137.813	-2517.250
W69-4	-97140.438	-2515.798
W69-5	-97169.995	-2416.406
W69-6	-97167.608	-2411.990
W69-7	-97120.747	-2397.937
W69-8	-97118.088	-2399.347
W69-21	-97113.604	-2509.944
W69-22	-97123.747	-2513.005
W69-23	-97150.203	-2482.962
W69-24	-97154.165	-2469.637
W69-25	-97160.564	-2448.119
W69-26	-97162.484	-2441.663
W69-27	-97144.938	-2405.191

測 点 名	X 座 標	Y 座 標
W69-28	-97115.087	-2409.376
W69-29	-97110.357	-2425.184
W69-30	-97108.234	-2432.279
W69-31	-97105.884	-2440.134
W69-32	-97097.799	-2467.150
W69-33	-97122.363	-2480.637
W69-34	-97118.186	-2494.614
W69-35	-97096.114	-2472.783
W69-36	-97124.028	-2475.064
W69-37	-97127.963	-2461.845
W69-38	-97132.091	-2447.976
W69-39	-97134.367	-2440.329
W69-40	-97134.430	-2440.118
W69-41	-97136.289	-2433.873
W69-42	-97136.543	-2433.019

測 点 名	X 座 標	Y 座 標
W69-43	-97141.266	-2417.210
W69-44	-97143.232	-2410.632
W69-45	-97128.336	-2497.647

# 面積（座標法）計算書

地番：W69-1

測点名	[1] X(i)	[2] X(i+1)-X(i-1)	[3] Y(i)	[4] Y(i+1)-Y(i-1)	[2]*[3]	[1]*[4]	方向角	夾角	距離
W69-35	-97096.114	34.387	-2472.783	-19.342	-85030.530048	1878032.941559	286-39-32	90-00-00	28.388
W69-1	-97087.976	6.734	-2499.979	-29.850	-16834.536717	2898102.125001	242-07-02	135-27-30	3.002
W69-2	-97089.380	-25.628	-2502.633	-9.965	64138.320121	967477.236568	196-47-38	134-40-36	25.303
W69-21	-97113.604	-32.982	-2509.944	21.996	82784.078307	-2136099.072616	106-38-19	89-50-41	30.588
W69-33	-97122.363	17.490	-2480.637	37.161	-43387.164652	-3609183.397522	16-39-32	90-01-13	27.399
合計				倍面積	1670.167010	-1670.167010			114.680
				面積	835.0835053	835.0835053			

# 面積（座標法）計算書

地番： W69-2

測点名	[1] X(i)	[2] X(i+1)-X(i-1)	[3] Y(i)	[4] Y(i+1)-Y(i-1)	[2]*[3]	[1]*[4]	方向角	夾角	距離
W69-33	-97122.363	-27.914	-2480.637	-2.281	69244.923692	221532.729364	106-38-19	89-58-47	5.817
W69-36	-97124.028	24.563	-2475.064	13.487	-60795.509670	-1309881.893747	16-47-19	90-09-00	27.397
W69-32	-97097.799	27.914	-2467.150	2.281	-68868.453860	-221476.701534	286-39-32	89-52-13	5.879
W69-35	-97096.114	-24.563	-2472.783	-13.487	60739.481840	1309505.423915	196-39-32	90-00-00	27.399
合計				倍面積	320.442000	-320.442000			66.492
				面積	160.2210003	160.2210003			

# 面積（座標法）計算書

地番：W69-3

測点名	[1] X(i)	[2] X(i+1)-X(i-1)	[3] Y(i)	[4] Y(i+1)-Y(i-1)	[2]*[3]	[1]*[4]	方向角	夾角	距離
W69-31	-97105.884	34.291	-2440.134	-19.174	-83675.770640	1861946.850688	286-39-32	90-00-00	28.200
W69-32	-97097.799	-18.145	-2467.150	-34.930	44765.580740	3391597.782108	196-47-19	90-07-47	27.397
W69-36	-97124.028	-34.291	-2475.064	19.174	84873.561587	-1862294.763444	106-34-32	89-47-13	28.262
W69-38	-97132.091	18.145	-2447.976	34.930	-44417.667984	-3392795.573055	16-39-32	90-05-00	27.355
合計				倍面積	1545.703702	-1545.703702			111.214
				面積	772.8518514	772.8518514			

# 面積（座標法）計算書

地番：W69-4

測点名	[1] X(i)	[2] X(i+1)-X(i-1)	[3] Y(i)	[4] Y(i+1)-Y(i-1)	[2]*[3]	[1]*[4]	方向角	夾角	距離
W69-38	-97132.091	-28.546	-2447.976	0.016	69880.542108	-1552.782744	106-34-32	89-55-00	8.199
W69-40	-97134.430	23.857	-2440.118	15.697	-58213.800144	-1524686.022671	16-39-32	90-05-00	27.344
W69-30	-97108.234	28.546	-2432.279	-0.016	-69432.461290	1552.401360	286-39-32	90-00-00	8.199
W69-31	-97105.884	-23.857	-2440.134	-15.697	58214.181529	1524237.941853	196-39-32	90-00-00	27.355
合計				倍面積	448.462202	-448.462202			71.097
				面積	224.2311012	224.2311012			

面積（座標法）計算書

地番：W69-5

測点名	[1] X(i)	[2] X(i+1)-X(i-1)	[3] Y(i)	[4] Y(i+1)-Y(i-1)	[2]*[3]	[1]*[4]	方向角	夾角	距離
W69-40	-97134.430	-28.309	-2440.118	-0.740	69076.690012	71901.634459	106-34-32	89-55-00	7.406
W69-42	-97136.543	24.073	-2433.019	14.934	-58569.511826	-1450632.475886	16-39-32	90-05-00	27.333
W69-29	-97110.357	28.309	-2425.184	0.740	-68653.928475	-71883.815120	286-39-32	90-00-00	7.406
W69-30	-97108.234	-24.073	-2432.279	-14.934	58551.692487	1450209.714348	196-39-32	90-00-00	27.344
合計				倍面積	404.942198	-404.942198			69.489
				面積	202.4710992	202.4710992			

面積（座標法）計算書

地番：W69-6-1

測点名	[1] X(i)	[2] X(i+1)-X(i-1)	[3] Y(i)	[4] Y(i+1)-Y(i-1)	[2]*[3]	[1]*[4]	方向角	夾角	距離
W69-28	-97115.087	30.909	-2409.376	-7.974	-74471.852363	774418.304644	286-39-32	90-00-00	16.500
W69-29	-97110.357	-21.455	-2425.184	-23.643	52033.348876	2296014.452694	196-39-32	90-00-00	27.333
W69-42	-97136.543	-30.909	-2433.019	7.974	75202.649139	-774589.395187	106-38-05	89-58-33	16.500
W69-43	-97141.266	21.455	-2417.210	23.643	-51862.258333	-2296745.249470	16-39-32	90-01-27	27.326
合計				倍面積	901.887319	-901.887319			87.659
				面積	450.9436597	450.9436597			

# 面積（座標法）計算書

地 番： W69-6-2

測点名	[1] X(i)	[2] X(i+1)-X(i-1)	[3] Y(i)	[4] Y(i+1)-Y(i-1)	[2]*[3]	[1]*[4]	方向角	夾 角	距 離
W69-43	-97141.266	-28.144	-2417.210	-1.256	68030.801050	121964.862031	106-38-05	89-58-33	6.865
W69-44	-97143.232	-3.671	-2410.632	12.018	8850.010954	-1167514.783073	107-24-33	180-46-28	5.702
W69-27	-97144.938	22.484	-2405.191	12.695	-54079.239697	-1233268.980391	16-41-39	89-17-06	25.255
W69-7	-97120.747	26.849	-2397.937	5.844	-64382.819751	-567578.959425	332-03-12	135-21-33	3.010
W69-8	-97118.088	5.660	-2399.347	-11.440	-13580.231614	1110992.364096	286-39-32	134-36-20	10.468
W69-28	-97115.087	-23.178	-2409.376	-17.863	55844.563059	1734722.412760	196-39-32	90-00-00	27.326
合計				倍面積	683.084001	-683.084001			78.626
				面 積	341.5420008	341.5420008			



# 面積（座標法）計算書

地 番： W69-7

測点名	[1] X(i)	[2] X(i+1)-X(i-1)	[3] Y(i)	[4] Y(i+1)-Y(i-1)	[2]*[3]	[1]*[4]	方向角	夾 角	距 離
W69-26	-97162.484	-33.706	-2441.663	17.468	82299.426406	-1697194.830340	106-33-40	90-00-00	26.351
W69-5	-97169.995	-5.125	-2416.406	29.673	12383.012809	-2883329.696855	61-36-41	135-03-01	5.019
W69-6	-97167.608	25.057	-2411.990	11.215	-60437.955916	-1089699.894162	16-41-39	135-04-58	23.669
W69-27	-97144.938	24.377	-2405.191	1.359	-58630.905525	-131978.702919	287-24-33	90-42-54	5.702
W69-44	-97143.232	8.395	-2410.632	-27.828	-20236.809627	2703328.107656	286-38-05	179-13-32	23.366
W69-42	-97136.543	6.943	-2433.019	-23.242	-16892.725891	2257625.873767	286-34-32	179-56-27	0.891
W69-41	-97136.289	-25.941	-2433.873	-8.644	63137.565950	839627.534647	196-33-40	89-59-08	27.329
合計				倍面積 面積	1621.608204 810.8041025	-1621.608204 810.8041025			112.327

# 面積（座標法）計算書

地番：W69-8

測点名	[1] X(i)	[2] X(i+1)-X(i-1)	[3] Y(i)	[4] Y(i+1)-Y(i-1)	[2]*[3]	[1]*[4]	方向角	夾角	距離
W69-41	-97136.289	28.117	-2433.873	1.335	-68432.696110	-129635.370842	286-34-32	90-00-52	6.735
W69-39	-97134.367	-24.276	-2440.329	-14.246	59240.419935	1383737.514872	196-33-40	89-59-08	27.331
W69-25	-97160.564	-28.117	-2448.119	-1.335	68833.236634	129667.768365	106-33-40	90-00-00	6.735
W69-26	-97162.484	24.276	-2441.663	14.246	-59272.817459	-1384138.055397	16-33-40	90-00-00	27.329
合計				倍面積	368.143001	-368.143001			68.130
				面積	184.0715006	184.0715006			

面積（座標法）計算書

地番：W69-9

測点名	[1] X(i)	[2] X(i+1)-X(i-1)	[3] Y(i)	[4] Y(i+1)-Y(i-1)	[2]*[3]	[1]*[4]	方向角	夾角	距離
W69-39	-97134.367	32.601	-2440.329	-13.726	-79558.327026	1333308.236362	286-34-32	90-00-52	22.450
W69-37	-97127.963	-19.798	-2461.845	-29.309	48739.566941	2846695.483878	196-33-40	89-59-08	27.336
W69-24	-97154.165	-32.601	-2469.637	13.726	80513.834411	-1333579.991977	106-33-40	90-00-00	22.450
W69-25	-97160.564	19.798	-2448.119	29.309	-48467.811326	-2847650.991263	16-33-40	90-00-00	27.331
合計				倍面積	1227.263000	-1227.263000			99.567
				面積	613.6315000	613.6315000			

面積（座標法）計算書

地番：W69-10

測点名	[1] X(i)	[2] X(i+1)-X(i-1)	[3] Y(i)	[4] Y(i+1)-Y(i-1)	[2]*[3]	[1]*[4]	方向角	夾角	距離
W69-37	-97127.963	30.137	-2461.845	-5.426	-74192.213695	527030.690457	286-34-32	90-00-52	13.791
W69-36	-97124.028	-22.240	-2475.064	-21.117	55045.564526	2050922.145606	196-47-30	90-12-58	27.340
W69-23	-97150.203	-30.137	-2482.962	5.426	74828.598835	-527151.368317	106-33-40	89-46-10	13.901
W69-24	-97154.165	22.240	-2469.637	21.117	-54924.886666	-2051558.530746	16-33-40	90-00-00	27.336
合計				倍面積	757.063000	-757.063000			82.368
				面積	378.5315003	378.5315003			

# 面積（座標法）計算書

地番：W69-11

測点名	[1] X(i)	[2] X(i+1)-X(i-1)	[3] Y(i)	[4] Y(i+1)-Y(i-1)	[2]*[3]	[1]*[4]	方向角	夾角	距離
W69-3	-97137.813	-16.691	-2517.250	-2.793	42016.183432	271282.686934	151-02-29	134-14-51	3.000
W69-4	-97140.438	-12.389	-2515.798	34.288	31169.166234	-3330762.545678	106-33-40	135-31-11	34.257
W69-23	-97150.203	16.410	-2482.962	40.734	-40745.293235	-3957318.814327	16-47-30	90-13-50	27.340
W69-36	-97124.028	32.017	-2475.064	-11.652	-79243.940172	1131662.594400	286-38-19	89-50-49	20.404
W69-34	-97118.186	-4.308	-2494.614	-22.584	10747.341948	2193284.222983	196-38-19	90-00-00	10.594
W69-45	-97128.336	-5.561	-2497.647	-18.391	13889.787341	1786297.891101	286-38-19	270-00-00	16.029
W69-22	-97123.747	-9.477	-2513.005	-19.603	23815.339853	1903905.379182	196-47-38	90-09-19	14.693
合計				倍面積	1648.585403	-1648.585403			126.317
				面積	824.2927018	824.2927018			

# 面積（座標法）計算書

地番：W69-12

測点名	[1] X(i)	[2] X(i+1)-X(i-1)	[3] Y(i)	[4] Y(i+1)-Y(i-1)	[2]*[3]	[1]*[4]	方向角	夾角	距離
W69-21	-97113.604	-5.561	-2509.944	-18.391	13958.170405	1786026.952219	196-47-38	90-09-19	10.594
W69-22	-97123.747	-14.732	-2513.005	12.297	37021.731050	-1194289.137057	106-38-19	89-50-41	16.029
W69-45	-97128.336	5.561	-2497.647	18.391	-13889.787341	-1786297.891101	16-38-19	90-00-00	10.594
W69-34	-97118.186	14.732	-2494.614	-12.297	-36750.792168	1194220.753994	286-38-19	90-00-00	16.000
合計				倍面積	339.321945	-339.321945			53.217
				面積	169.6609728	169.6609728			