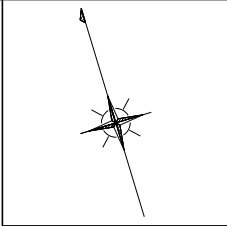
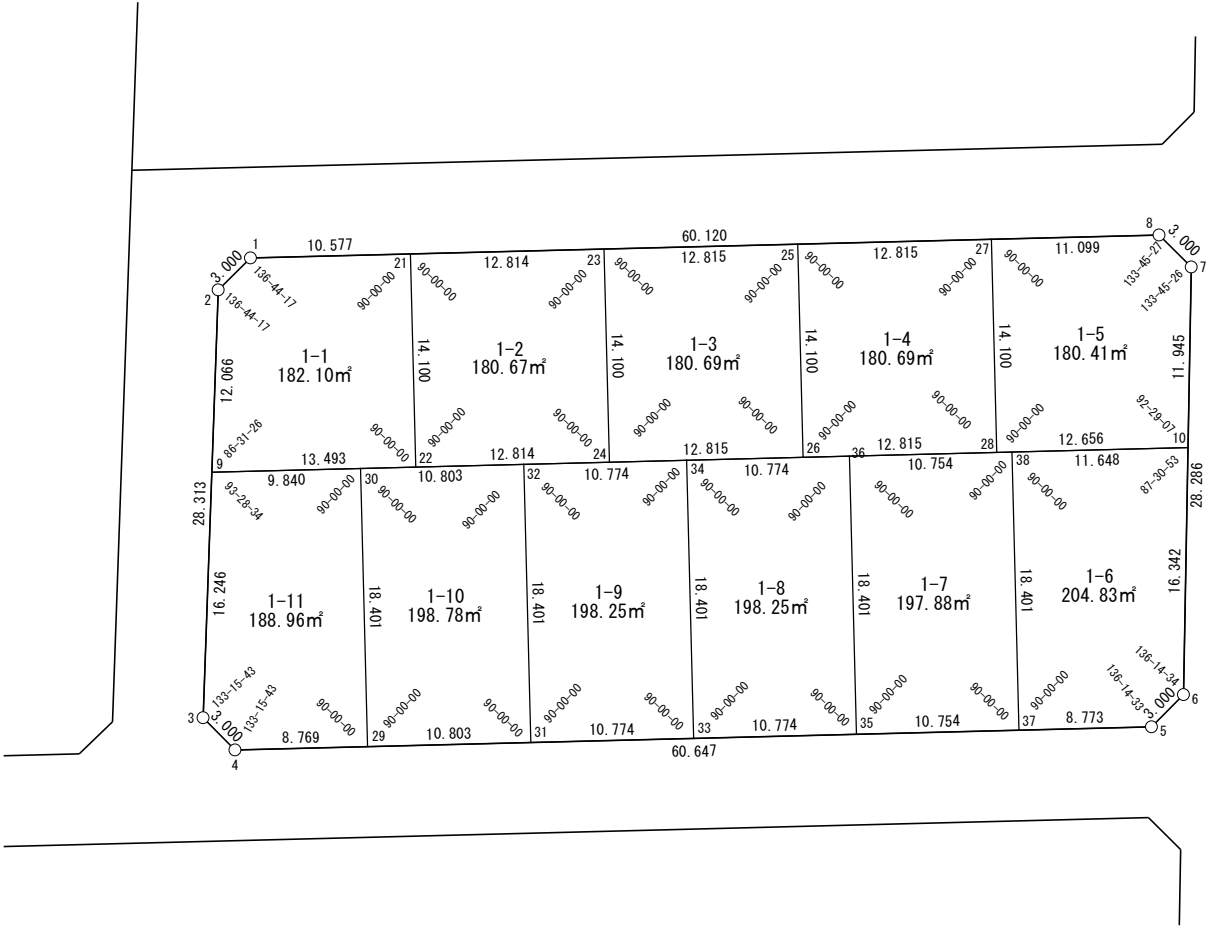


面積一覧表

地番名	面積
W65-1-1	182.10 m ²
W65-1-2	180.67 m ²
W65-1-3	180.69 m ²
W65-1-4	180.69 m ²
W65-1-5	180.41 m ²
W65-1-6	204.83 m ²
W65-1-7	197.88 m ²
W65-1-8	198.25 m ²
W65-1-9	198.25 m ²
W65-1-10	198.78 m ²
W65-1-11	188.96 m ²
合計	2091.51 m ²

座 標 一 覧 表

測 点 名	X 座 標	Y 座 標
W65-1	-97099.480	-2206.493
W65-2	-97100.875	-2209.149
W65-3	-97127.640	-2218.381
W65-4	-97130.296	-2216.986
W65-5	-97146.558	-2158.560
W65-6	-97145.140	-2155.916
W65-7	-97118.244	-2147.157
W65-8	-97115.601	-2148.575
W65-9	-97112.282	-2213.083
W65-10	-97129.602	-2150.855
W65-21	-97102.316	-2196.303
W65-22	-97115.900	-2200.084
W65-23	-97105.752	-2183.958
W65-24	-97119.336	-2187.739
W65-25	-97109.188	-2171.613
W65-26	-97122.772	-2175.394
W65-27	-97112.625	-2159.267
W65-28	-97126.208	-2163.048
W65-29	-97132.647	-2208.538
W65-30	-97114.920	-2203.604
W65-31	-97135.544	-2198.130
W65-32	-97117.817	-2193.196
W65-33	-97138.433	-2187.751
W65-34	-97120.706	-2182.817
W65-35	-97141.322	-2177.372
W65-36	-97123.595	-2172.437
W65-37	-97144.206	-2167.011
W65-38	-97126.478	-2162.077



世界測地系

株式会社
オオバ
名古屋支店

豊田浄水特定土地区画整理組合

面積（座標法）計算書

地番：W65-1-1

測点名	[1] X(i)	[2] X(i+1)-X(i-1)	[3] Y(i)	[4] Y(i+1)-Y(i-1)	[2]*[3]	[1]*[4]	方向角	夾角	距離
W65-1	-97099.480	1.441	-2206.493	-12.846	-3180.110466	1247305.254928	242-17-31	136-44-17	3.000
W65-2	-97100.875	-12.802	-2209.149	-6.590	28280.980514	639928.655115	199-01-48	136-44-17	12.066
W65-9	-97112.282	-15.025	-2213.083	9.065	33251.556231	-880302.769579	105-33-14	86-31-26	13.493
W65-22	-97115.900	9.966	-2200.084	16.780	-21925.159395	-1629605.636426	15-33-14	90-00-00	14.100
W65-21	-97102.316	16.420	-2196.303	-6.409	-36063.064933	622310.294011	285-33-14	90-00-00	10.577
合計				倍面積	364.201950	-364.201950			53.236
				面積	182.1009755	182.1009755			

面積（座標法）計算書

地番：W65-1-2

測点名	[1] X(i)	[2] X(i+1)-X(i-1)	[3] Y(i)	[4] Y(i+1)-Y(i-1)	[2]*[3]	[1]*[4]	方向角	夾角	距離
W65-21	-97102.316	-10.148	-2196.303	-16.126	22287.535586	1565831.944795	195-33-14	90-00-00	14.100
W65-22	-97115.900	-17.020	-2200.084	8.564	37444.837733	-831689.767087	105-33-14	90-00-00	12.814
W65-24	-97119.336	10.148	-2187.739	16.126	-22200.631385	-1566106.397956	15-33-14	90-00-00	14.100
W65-23	-97105.752	17.020	-2183.958	-8.564	-37170.384572	831602.862886	285-33-14	90-00-00	12.814
合計				倍面積	361.357362	-361.357362			53.828
				面積	180.6786814	180.6786814			

面積（座標法）計算書

地番：W65-1-3

測点名	[1] X(i)	[2] X(i+1)-X(i-1)	[3] Y(i)	[4] Y(i+1)-Y(i-1)	[2]*[3]	[1]*[4]	方向角	夾角	距離
W65-23	-97105.752	-10.147	-2183.958	-16.127	22161.678655	1565980.901804	195-33-14	90-00-00	14.100
W65-24	-97119.336	-17.020	-2187.739	8.565	37235.320241	-831812.755259	105-33-14	90-00-00	12.815
W65-26	-97122.772	10.147	-2175.394	16.127	-22074.766974	-1566255.375686	15-33-14	90-00-00	14.100
W65-25	-97109.188	17.020	-2171.613	-8.565	-36960.846358	831725.843578	285-33-14	90-00-00	12.815
合計				倍面積	361.385563	-361.385563			53.830
				面積	180.6927815	180.6927815			

面積（座標法）計算書

地番：W65-1-4

測点名	[1] X(i)	[2] X(i+1)-X(i-1)	[3] Y(i)	[4] Y(i+1)-Y(i-1)	[2]*[3]	[1]*[4]	方向角	夾角	距離
W65-25	-97109.188	-10.147	-2171.613	-16.127	22036.400872	1566036.316803	195-33-14	90-00-00	14.100
W65-26	-97122.772	-17.020	-2175.394	8.565	37025.196413	-831842.186304	105-33-14	90-00-00	12.815
W65-28	-97126.208	10.147	-2163.048	16.127	-21949.489191	-1566310.790685	15-33-14	90-00-00	14.100
W65-27	-97112.625	17.020	-2159.267	-8.565	-36750.722531	831755.274623	285-33-14	90-00-00	12.815
合計				倍面積	361.385563	-361.385563			53.830
				面積	180.6927815	180.6927815			

面積（座標法）計算書

地番：W65-1-5

測点名	[1] X(i)	[2] X(i+1)-X(i-1)	[3] Y(i)	[4] Y(i+1)-Y(i-1)	[2]*[3]	[1]*[4]	方向角	夾角	距離
W65-27	-97112.625	-10.608	-2159.267	-14.473	22904.662189	1405551.363722	195-33-14	90-00-00	14.100
W65-28	-97126.208	-16.977	-2163.048	8.412	36722.799198	-816985.661647	105-33-14	90-00-00	12.656
W65-10	-97129.602	7.964	-2150.855	15.891	-17128.956297	-1543509.103971	18-02-21	92-29-07	11.945
W65-7	-97118.244	14.001	-2147.157	2.281	-30062.789803	-221524.553299	331-47-47	133-45-26	3.000
W65-8	-97115.601	5.620	-2148.575	-12.110	-12074.886699	1176107.126608	285-33-14	133-45-27	11.099
合計				倍面積	360.828587	-360.828587			52.800
				面積	180.4142939	180.4142939			

面積（座標法）計算書

地番：W65-1-6

測点名	[1] X(i)	[2] X(i+1)-X(i-1)	[3] Y(i)	[4] Y(i+1)-Y(i-1)	[2]*[3]	[1]*[4]	方向角	夾角	距離
W65-38	-97126.478	-14.604	-2162.077	-16.156	31574.830340	1569161.845515	195-33-14	90-00-00	18.401
W65-37	-97144.206	-20.080	-2167.011	3.517	43512.979658	-341695.514814	105-33-14	90-00-00	8.773
W65-5	-97146.558	-0.935	-2158.560	11.095	2017.308943	-1077879.078759	61-47-47	136-14-33	3.000
W65-6	-97145.140	16.956	-2155.916	7.704	-36556.384826	-748434.456371	18-02-21	136-14-34	16.342
W65-10	-97129.602	18.662	-2150.855	-6.161	-40139.054826	598437.525139	285-33-14	87-30-53	11.648
合計				倍面積	409.679289	-409.679289			58.164
				面積	204.8396450	204.8396450			

面積（座標法）計算書

地番：W65-1-7

測点名	[1] X(i)	[2] X(i+1)-X(i-1)	[3] Y(i)	[4] Y(i+1)-Y(i-1)	[2]*[3]	[1]*[4]	方向角	夾角	距離
W65-36	-97123.595	-14.844	-2172.437	-15.294	32247.062744	1485441.477513	195-33-14	90-00-00	18.401
W65-35	-97141.322	-20.611	-2177.372	5.426	44877.705540	-527090.112478	105-33-14	90-00-00	10.754
W65-37	-97144.206	14.844	-2167.011	15.294	-32166.520494	-1485756.708502	15-33-14	90-00-00	18.401
W65-38	-97126.478	20.611	-2162.077	-5.426	-44562.474552	527009.570228	285-33-14	90-00-00	10.754
合計				倍面積	395.773238	-395.773238			58.310
				面積	197.8866194	197.8866194			

面積（座標法）計算書

地番：W65-1-8

測点名	[1] X(i)	[2] X(i+1)-X(i-1)	[3] Y(i)	[4] Y(i+1)-Y(i-1)	[2]*[3]	[1]*[4]	方向角	夾角	距離
W65-34	-97120.706	-14.838	-2182.817	-15.314	32389.426189	1487268.573148	195-33-14	90-00-00	18.401
W65-33	-97138.433	-20.616	-2187.751	5.445	45103.368412	-528946.059681	105-33-14	90-00-00	10.774
W65-35	-97141.322	14.838	-2177.372	15.314	-32308.627138	-1487584.283385	15-33-14	90-00-00	18.401
W65-36	-97123.595	20.616	-2172.437	-5.445	-44787.658176	528865.260630	285-33-14	90-00-00	10.774
合計				倍面積	396.509286	-396.509286			58.350
				面積	198.2546435	198.2546435			

面積（座標法）計算書

地番：W65-1-9

測点名	[1] X(i)	[2] X(i+1)-X(i-1)	[3] Y(i)	[4] Y(i+1)-Y(i-1)	[2]*[3]	[1]*[4]	方向角	夾角	距離
W65-32	-97117.817	-14.838	-2193.196	-15.314	32543.440131	1487224.332157	195-33-14	90-00-00	18.401
W65-31	-97135.544	-20.616	-2198.130	5.445	45317.354325	-528930.328694	105-33-14	90-00-00	10.774
W65-33	-97138.433	14.838	-2187.751	15.314	-32462.641081	-1487540.042393	15-33-14	90-00-00	18.401
W65-34	-97120.706	20.616	-2182.817	-5.445	-45001.644089	528849.529643	285-33-14	90-00-00	10.774
合計				倍面積	396.509286	-396.509286			58.350
				面積	198.2546434	198.2546434			

面積（座標法）計算書

地番：W65-1-10

測点名	[1] X(i)	[2] X(i+1)-X(i-1)	[3] Y(i)	[4] Y(i+1)-Y(i-1)	[2]*[3]	[1]*[4]	方向角	夾角	距離
W65-30	-97114.920	-14.831	-2203.604	-15.342	32680.733052	1489893.167834	195-33-14	90-00-00	18.401
W65-29	-97132.647	-20.624	-2208.538	5.473	45549.090161	-531628.246380	105-33-14	90-00-00	10.803
W65-31	-97135.544	14.831	-2198.130	15.342	-32599.562008	-1490209.573347	15-33-14	90-00-00	18.401
W65-32	-97117.817	20.624	-2193.196	-5.473	-45232.684648	531547.075336	285-33-14	90-00-00	10.803
合計				倍面積	397.576556	-397.576556			58.408
				面積	198.7882783	198.7882783			

面積（座標法）計算書

地番：W65-1-11

測点名	[1] X(i)	[2] X(i+1)-X(i-1)	[3] Y(i)	[4] Y(i+1)-Y(i-1)	[2]*[3]	[1]*[4]	方向角	夾角	距離
W65-9	-97112.282	-12.720	-2213.083	-14.777	28150.432615	1435022.058073	199-01-48	93-28-34	16.246
W65-3	-97127.640	-18.015	-2218.381	-3.902	39963.028227	379035.145206	152-17-31	133-15-43	3.000
W65-4	-97130.296	-5.007	-2216.986	9.843	11101.186413	-956031.416243	105-33-14	133-15-43	8.769
W65-29	-97132.647	15.376	-2208.538	13.382	-33958.454484	-1299832.459371	15-33-14	90-00-00	18.401
W65-30	-97114.920	20.366	-2203.604	-4.545	-44878.272457	441428.752021	285-33-14	90-00-00	9.840
合計				倍面積	377.920313	-377.920313			56.256
				面積	188.9601569	188.9601569			