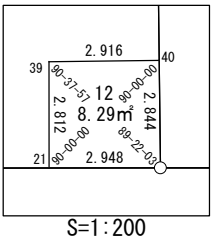
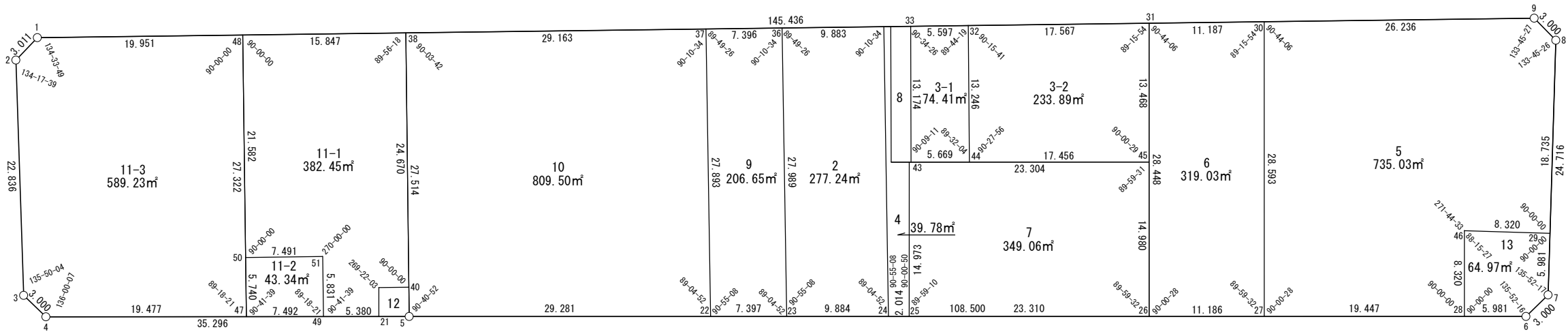
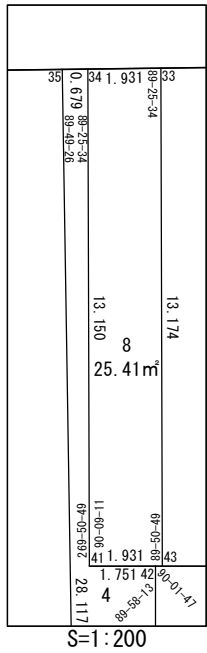


面積一覧表	
地番名	地積
W64-2	277.24 m <sup>2</sup>
W64-3-1	74.41 m <sup>2</sup>
W64-3-2	233.89 m <sup>2</sup>
W64-4	39.78 m <sup>2</sup>
W64-5	735.03 m <sup>2</sup>
W64-6	319.03 m <sup>2</sup>
W64-7	349.06 m <sup>2</sup>
W64-8	25.41 m <sup>2</sup>
W64-9	206.65 m <sup>2</sup>
W64-10	809.50 m <sup>2</sup>
W64-11-1	382.45 m <sup>2</sup>
W64-11-2	43.34 m <sup>2</sup>
W64-11-3	589.23 m <sup>2</sup>
W64-12	8.29 m <sup>2</sup>
W64-13	64.97 m <sup>2</sup>
合計	4158.28 m <sup>2</sup>



座 標 一 覧 表			
測 点 名	X 座 標	Y 座 標	
W64-1	-97113.241	-2300.621	
W64-2	-97114.741	-2303.231	
W64-3	-97136.858	-2308.914	
W64-4	-97139.463	-2307.426	
W64-5	-97149.338	-2273.540	
W64-6	-97179.785	-2169.400	
W64-7	-97178.384	-2166.747	
W64-8	-97154.883	-2159.093	
W64-9	-97152.239	-2160.511	
W64-21	-97148.514	-2276.370	
W64-22	-97157.555	-2245.436	
W64-23	-97159.631	-2238.336	
W64-24	-97162.404	-2228.849	
W64-25	-97162.969	-2226.916	
W64-26	-97169.510	-2204.543	
W64-27	-97172.649	-2193.806	

測 点 名	X 座 標	Y 座 標
W64-28	-97178.106	-2175.141
W64-29	-97172.697	-2164.895
W64-30	-97145.204	-2185.786
W64-31	-97142.204	-2196.563
W64-32	-97137.494	-2213.487
W64-33	-97135.993	-2218.879
W64-34	-97135.475	-2220.739
W64-35	-97135.293	-2221.393
W64-36	-97132.643	-2230.914
W64-37	-97130.660	-2238.039
W64-38	-97122.840	-2266.134
W64-39	-97145.814	-2275.583
W64-40	-97146.599	-2272.774
W64-41	-97148.108	-2224.392
W64-42	-97148.599	-2222.711
W64-43	-97148.649	-2222.539

測 点 名	X 座 標	Y 座 標
W64-44	-97150.238	-2217.097
W64-45	-97155.132	-2200.341
W64-46	-97170.120	-2172.806
W64-47	-97144.912	-2288.727
W64-48	-97118.591	-2281.401
W64-49	-97147.009	-2281.534
W64-50	-97139.383	-2287.188
W64-51	-97141.391	-2279.971

# 面積（座標法）計算書

地番：W64-2

測点名	[1] X(i)	[2] X(i+1)-X(i-1)	[3] Y(i)	[4] Y(i+1)-Y(i-1)	[2]*[3]	[1]*[4]	方向角	夾角	距離
W64-36	-97132.643	-24.337	-2230.914	-16.943	54294.282391	1645721.426108	195-22-40	89-49-26	27.989
W64-23	-97159.631	-29.761	-2238.336	2.064	66614.541933	-200584.424992	106-17-48	90-55-08	9.884
W64-24	-97162.404	24.337	-2228.849	16.943	-54244.038571	-1646225.663284	15-22-40	89-04-52	28.117
W64-35	-97135.293	29.761	-2221.393	-2.064	-66110.304757	200534.181171	285-33-14	90-10-34	9.883
合計				倍面積	554.480996	-554.480996			75.873
				面積	277.2404983	277.2404983			

# 面積（座標法）計算書

地番：W64-3-1

測点名	[1] X(i)	[2] X(i+1)-X(i-1)	[3] Y(i)	[4] Y(i+1)-Y(i-1)	[2]*[3]	[1]*[4]	方向角	夾角	距離
W64-43	-97148.649	-14.245	-2222.539	1.782	31660.258907	-173127.528840	106-16-51	90-09-11	5.669
W64-44	-97150.238	11.155	-2217.097	9.052	-24731.726081	-879365.795295	15-48-55	89-32-04	13.246
W64-32	-97137.494	14.245	-2213.487	-1.782	-31531.317957	173107.649630	285-33-14	89-44-19	5.597
W64-33	-97135.993	-11.155	-2218.879	-9.052	24751.605291	879236.854345	196-07-40	90-34-26	13.174
合計				倍面積	148.820160	-148.820160			37.686
				面積	74.4100801	74.4100801			

面積（座標法）計算書

地番：W64-3-2

測点名	[1] X(i)	[2] X(i+1)-X(i-1)	[3] Y(i)	[4] Y(i+1)-Y(i-1)	[2]*[3]	[1]*[4]	方向角	夾角	距離
W64-44	-97150.238	-17.638	-2217.097	13.146	39105.102389	-1277125.460381	106-16-51	90-27-56	17.456
W64-45	-97155.132	8.034	-2200.341	20.533	-17677.244499	-1994928.623901	16-17-20	90-00-29	13.468
W64-31	-97142.204	17.638	-2196.563	-13.146	-38742.934140	1277019.848138	285-33-14	89-15-54	17.567
W64-32	-97137.494	-8.034	-2213.487	-20.533	17782.856742	1994566.455652	195-48-55	90-15-41	13.246
合計				倍面積	467.780491	-467.780491			61.737
				面積	233.8902460	233.8902460			

# 面積（座標法）計算書

地番： W64-4

測点名	[1] X(i)	[2] X(i+1)-X(i-1)	[3] Y(i)	[4] Y(i+1)-Y(i-1)	[2]*[3]	[1]*[4]	方向角	夾角	距離
W64-35	-97135.293	-26.929	-2221.393	-8.110	59819.227612	787806.364578	195-22-40	89-49-26	28.117
W64-24	-97162.404	-27.676	-2228.849	-5.523	61685.650975	536617.454496	106-17-48	90-55-08	2.014
W64-25	-97162.969	13.806	-2226.916	6.139	-30743.709715	-596438.550218	16-18-38	90-00-50	14.973
W64-42	-97148.599	14.862	-2222.711	2.524	-33033.174849	-245231.109600	286-16-51	89-58-13	1.751
W64-41	-97148.108	13.123	-2224.392	1.972	-29191.115475	-191562.972739	16-07-40	269-50-49	13.150
W64-34	-97135.475	12.814	-2220.739	2.999	-28457.317747	-291270.747318	285-33-14	89-25-34	0.679
合計				倍面積	79.560801	-79.560801			60.684
				面積	39.7804005	39.7804005			

## 面 積 ( 座 標 法 ) 計 算 書

地 番 : W64-5

測点名	[1] X(i)	[2] X(i+1)-X(i-1)	[3] Y(i)	[4] Y(i+1)-Y(i-1)	[2]*[3]	[1]*[4]	方向角	夾 角	距 離
W64-30	-97145.204	-20.410	-2185.786	-33.295	44612.392803	3234464.828937	196-17-20	90-44-06	28.593
W64-27	-97172.649	-32.902	-2193.806	10.646	72181.183555	-1034462.904281	106-17-48	90-00-28	19.447
W64-28	-97178.106	2.529	-2175.141	21.000	-5501.064910	-2040762.077329	16-17-48	90-00-00	8.320
W64-46	-97170.120	5.410	-2172.806	10.246	-11753.898481	-995608.967710	108-02-21	271-44-33	8.320
W64-29	-97172.697	15.237	-2164.895	13.713	-32987.241498	-1332504.838676	18-02-21	90-00-00	18.735
W64-8	-97154.883	20.458	-2159.093	4.384	-44170.012348	-425895.236875	331-47-47	133-45-26	3.000
W64-9	-97152.239	9.679	-2160.511	-26.693	-20911.297608	2593299.134423	285-33-14	133-45-27	26.236
合計				倍面積	1470.061512	-1470.061512			112.651
				面 積	735.0307562	735.0307562			

面積（座標法）計算書

地番：W64-6

測点名	[1] X(i)	[2] X(i+1)-X(i-1)	[3] Y(i)	[4] Y(i+1)-Y(i-1)	[2]*[3]	[1]*[4]	方向角	夾角	距離
W64-26	-97169.510	-30.445	-2204.543	2.757	67117.246764	-267938.472750	106-17-48	90-00-28	11.186
W64-27	-97172.649	24.306	-2193.806	18.756	-53323.413366	-1822609.409340	16-17-20	89-59-32	28.593
W64-30	-97145.204	30.445	-2185.786	-2.757	-66546.208507	267871.449608	285-33-14	89-15-54	11.187
W64-31	-97142.204	-24.306	-2196.563	-18.756	53390.436509	1822038.371083	196-17-20	90-44-06	28.448
合計				倍面積	638.061399	-638.061399			79.414
				面積	319.0306995	319.0306995			

面積（座標法）計算書

地番：W64-7

測点名	[1] X(i)	[2] X(i+1)-X(i-1)	[3] Y(i)	[4] Y(i+1)-Y(i-1)	[2]*[3]	[1]*[4]	方向角	夾角	距離
W64-25	-97162.969	-20.912	-2226.916	18.168	46568.781387	-1765277.638924	106-17-48	89-59-10	23.310
W64-26	-97169.510	7.837	-2204.543	26.575	-17278.007497	-2582273.897820	16-17-20	89-59-32	14.980
W64-45	-97155.132	20.912	-2200.341	-18.168	-46013.052035	1765135.246328	286-16-51	89-59-31	23.304
W64-42	-97148.599	-7.837	-2222.711	-26.575	17420.400093	2581718.168467	196-18-38	90-01-47	14.973
合計				倍面積	698.121948	-698.121948			76.567
				面積	349.0609741	349.0609741			



# 面積（座標法）計算書

地番：W64-8

測点名	[1] X(i)	[2] X(i+1)-X(i-1)	[3] Y(i)	[4] Y(i+1)-Y(i-1)	[2]*[3]	[1]*[4]	方向角	夾角	距離
W64-34	-97135.475	-12.115	-2220.739	-5.513	26903.317259	535479.638505	196-07-40	90-34-26	13.150
W64-41	-97148.108	-13.174	-2224.392	-1.800	29303.042860	174825.548711	106-16-51	90-09-11	1.931
W64-43	-97148.649	12.115	-2222.539	5.513	-26925.118382	-535552.260229	16-07-40	89-50-49	13.174
W64-33	-97135.993	13.174	-2218.879	1.800	-29230.421137	-174803.747587	285-33-14	89-25-34	1.931
合計				倍面積	50.820599	-50.820599			30.186
				面積	25.4102998	25.4102998			

# 面積（座標法）計算書

地番：W64-9

測点名	[1] X(i)	[2] X(i+1)-X(i-1)	[3] Y(i)	[4] Y(i+1)-Y(i-1)	[2]*[3]	[1]*[4]	方向角	夾角	距離
W64-22	-97157.555	-28.970	-2245.436	-0.297	65051.108742	28877.936018	106-17-48	90-55-08	7.397
W64-23	-97159.631	24.912	-2238.336	14.522	-55760.485544	-1410943.002437	15-22-40	89-04-52	27.989
W64-36	-97132.643	28.970	-2230.914	0.297	-64630.403726	-28870.531601	285-33-14	90-10-34	7.396
W64-37	-97130.660	-24.912	-2238.039	-14.522	55753.081128	1410522.297421	195-22-40	89-49-26	27.893
合計				倍面積	413.300599	-413.300599			70.675
				面積	206.6503000	206.6503000			

# 面積（座標法）計算書

地番：W64-10

測点名	[1] X(i)	[2] X(i+1)-X(i-1)	[3] Y(i)	[4] Y(i+1)-Y(i-1)	[2]*[3]	[1]*[4]	方向角	夾角	距離
W64-5	-97149.338	-34.715	-2273.540	20.698	78924.920314	-2010794.394165	106-17-48	90-40-52	29.281
W64-22	-97157.555	18.678	-2245.436	35.501	-41940.881933	-3449186.024005	15-22-40	89-04-52	27.893
W64-37	-97130.660	34.715	-2238.039	-20.698	-77692.520495	2010407.791584	285-33-14	90-10-34	29.163
W64-38	-97122.840	-18.678	-2266.134	-35.501	42327.484513	3447953.624186	195-36-56	90-03-42	27.514
合計				倍面積	1619.002399	-1619.002399			113.851
				面積	809.5011998	809.5011998			

# 面積（座標法）計算書

地 番： W64-11-1

測点名	[1] X(i)	[2] X(i+1)-X(i-1)	[3] Y(i)	[4] Y(i+1)-Y(i-1)	[2]*[3]	[1]*[4]	方向角	夾 角	距 離
W64-48	-97118.591	-16.542	-2281.401	-21.054	37739.267060	2044723.175801	195-33-14	90-00-00	21.582
W64-50	-97139.383	-22.800	-2287.188	1.430	52148.243464	-138884.528336	105-33-14	90-00-00	7.491
W64-51	-97141.391	-7.626	-2279.971	5.653	17387.225065	-549164.162423	195-33-14	270-00-00	5.831
W64-49	-97147.009	-7.123	-2281.534	3.601	16250.371351	-349846.173525	106-14-53	90-41-39	5.380
W64-21	-97148.514	1.194	-2276.370	5.951	-2718.355577	-578170.951076	16-14-53	90-00-00	2.812
W64-39	-97145.814	1.914	-2275.583	3.595	-4356.223934	-349270.862683	105-36-56	269-22-03	2.916
W64-40	-97146.599	22.974	-2272.774	9.449	-52214.851573	-917959.697169	15-36-56	90-00-00	24.670
W64-38	-97122.840	28.008	-2266.134	-8.626	-63470.756014	837808.279570	285-33-14	89-56-18	15.847
合計				倍面積	764.919843	-764.919843			86.529
				面 積	382.4599218	382.4599218			

# 面積（座標法）計算書

地番：W64-11-2

測点名	[1] X(i)	[2] X(i+1)-X(i-1)	[3] Y(i)	[4] Y(i+1)-Y(i-1)	[2]*[3]	[1]*[4]	方向角	夾角	距離
W64-50	-97139.383	-3.521	-2287.188	-8.756	8053.787003	850548.092150	195-33-14	90-00-00	5.740
W64-47	-97144.912	-7.626	-2288.727	5.653	17453.998624	-549184.068983	106-14-53	90-41-39	7.492
W64-49	-97147.009	3.521	-2281.534	8.756	-8033.880442	-850614.865709	15-33-14	89-18-21	5.831
W64-51	-97141.391	7.626	-2279.971	-5.653	-17387.225065	549164.162423	285-33-14	90-00-00	7.491
合計				倍面積	86.680119	-86.680119			26.554
				面積	43.3400597	43.3400597			

# 面積（座標法）計算書

地 番： W64-11-3

測点名	[1] X(i)	[2] X(i+1)-X(i-1)	[3] Y(i)	[4] Y(i+1)-Y(i-1)	[2]*[3]	[1]*[4]	方向角	夾 角	距 離
W64-2	-97114.741	-23.617	-2303.231	-8.294	54395.523904	805463.906683	194-24-42	134-17-39	22.836
W64-3	-97136.858	-24.722	-2308.914	-4.195	57079.876528	407453.433222	150-14-46	135-50-04	3.000
W64-4	-97139.463	-8.054	-2307.426	20.188	18583.986846	-1961023.174001	106-14-53	136-00-07	19.477
W64-47	-97144.912	20.872	-2288.727	26.025	-47770.135726	-2528205.324801	15-33-14	89-18-21	27.322
W64-48	-97118.591	31.671	-2281.401	-11.894	-72254.333795	1155105.982648	285-33-14	90-00-00	19.951
W64-1	-97113.241	3.850	-2300.621	-21.830	-8856.456133	2120026.714623	240-07-03	134-33-49	3.011
合計				倍面積	1178.461623	-1178.461623			95.597
				面 積	589.2308119	589.2308119			

# 面積（座標法）計算書

地番：W64-12

測点名	[1] X(i)	[2] X(i+1)-X(i-1)	[3] Y(i)	[4] Y(i+1)-Y(i-1)	[2]*[3]	[1]*[4]	方向角	夾角	距離
W64-39	-97145.814	-1.914	-2275.583	-3.595	4356.223934	349270.862683	196-14-53	90-37-57	2.812
W64-21	-97148.514	-3.524	-2276.370	2.043	8022.007079	-198483.137563	106-14-53	90-00-00	2.948
W64-5	-97149.338	1.914	-2273.540	3.595	-4352.312779	-349283.532739	15-36-56	89-22-03	2.844
W64-40	-97146.599	3.524	-2272.774	-2.043	-8009.337024	198479.226409	285-36-56	90-00-00	2.916
合計				倍面積	16.581210	-16.581210			11.520
				面積	8.2906052	8.2906052			

# 面積（座標法）計算書

地番：W64-13

測点名	[1] X(i)	[2] X(i+1)-X(i-1)	[3] Y(i)	[4] Y(i+1)-Y(i-1)	[2]*[3]	[1]*[4]	方向角	夾角	距離
W64-46	-97170.120	-5.410	-2172.806	-10.246	11753.898481	995608.967710	196-17-48	88-15-27	8.320
W64-28	-97178.106	-9.664	-2175.141	3.406	21021.528740	-330998.649021	106-17-48	90-00-00	5.981
W64-6	-97179.785	-0.278	-2169.400	8.394	602.540347	-815711.748347	62-10-04	135-52-16	3.000
W64-7	-97178.384	7.088	-2166.747	4.505	-15357.774661	-437803.799256	18-02-21	135-52-17	5.981
W64-29	-97172.697	8.264	-2164.895	-6.059	-17890.251251	588775.287258	288-02-21	90-00-00	8.320
合計				倍面積	129.941656	-129.941656			31.602
				面積	64.9708285	64.9708285			