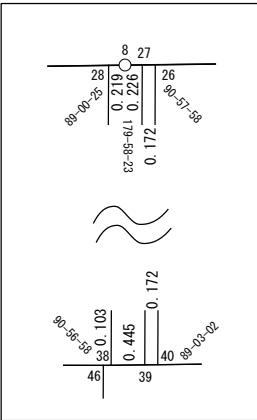


面積一覧表

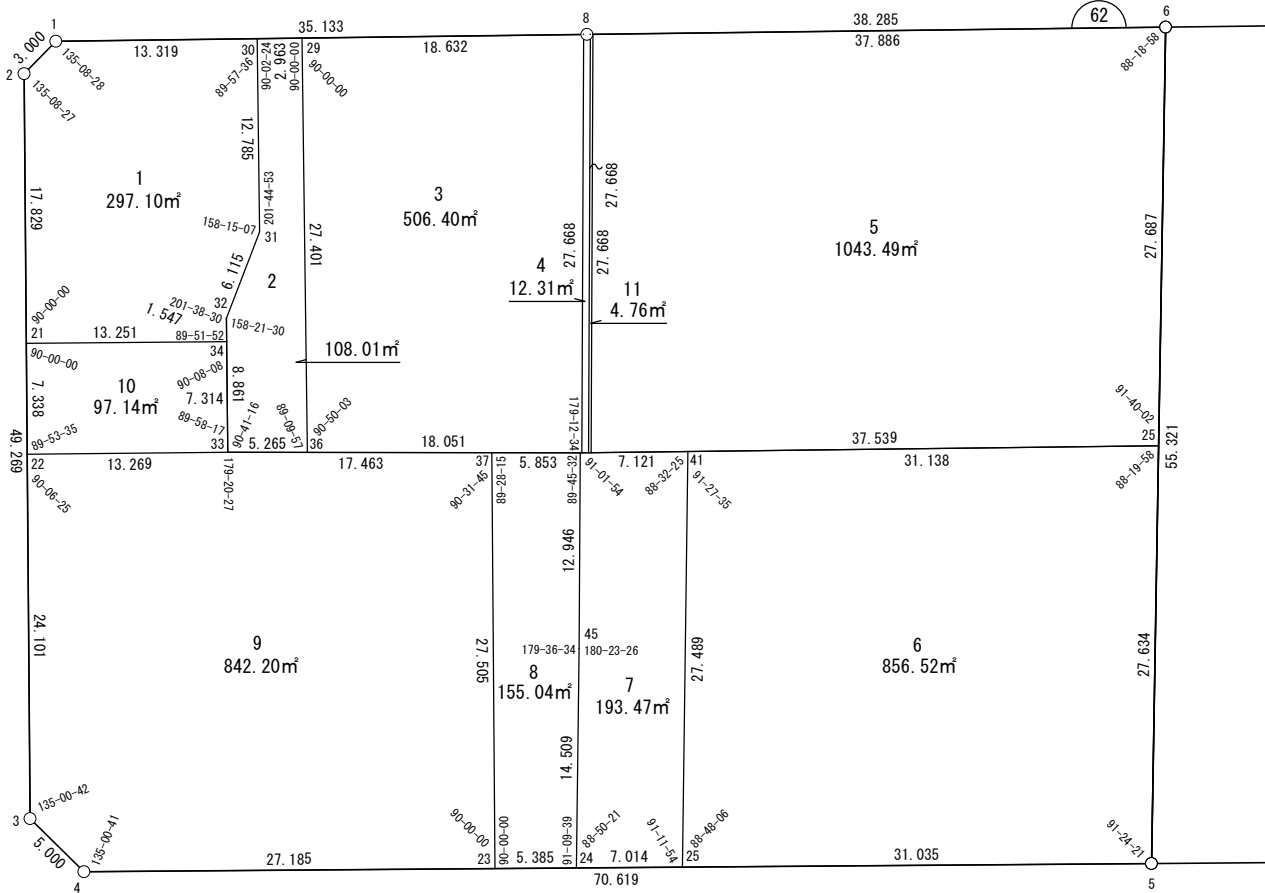
地番名	地積
W62-1	297.10 m ²
W62-2	108.01 m ²
W62-3	506.40 m ²
W62-4	12.31 m ²
W62-5	1043.49 m ²
W62-6	856.52 m ²
W62-7	193.47 m ²
W62-8	155.04 m ²
W62-9	842.20 m ²
W62-10	97.14 m ²
W62-11	4.76 m ²
合計	4116.44 m ²



世界測地系

座 標 一 覧 表

測 点 名	X 座 標	Y 座 標
W62-1	-97144.668	-2308.845
W62-2	-97146.104	-2311.479
W62-3	-97193.335	-2325.504
W62-4	-97197.731	-2323.122
W62-5	-97217.860	-2255.433
W62-6	-97165.238	-2238.368
W62-8	-97154.503	-2275.117
W62-34	-97166.968	-2303.851
W62-32	-97165.483	-2303.414
W62-31	-97160.668	-2299.646
W62-30	-97148.397	-2296.058
W62-21	-97163.196	-2316.554
W62-29	-97149.226	-2293.214
W62-33	-97173.984	-2305.917
W62-36	-97175.531	-2300.884
W62-46	-97180.836	-2283.630
W62-38	-97180.865	-2283.531
W62-28	-97154.442	-2275.327
W62-27	-97154.566	-2274.900
W62-39	-97180.990	-2283.104
W62-40	-97181.038	-2282.939
W63-25	-97191.574	-2246.908
W62-26	-97154.615	-2274.734
W62-25	-97209.014	-2285.180
W62-41	-97182.835	-2276.795
W62-45	-97193.194	-2287.486
W62-24	-97207.015	-2291.903
W62-23	-97205.480	-2297.065
W62-37	-97179.116	-2289.224
W62-22	-97170.231	-2318.643



面積（座標法）計算書

地 番： W62-1

測点名	[1] X(i)	[2] X(i+1)-X(i-1)	[3] Y(i)	[4] Y(i+1)-Y(i-1)	[2]*[3]	[1]*[4]	方向角	夾 角	距 離
W62-34	-97166.968	-2.288	-2303.851	13.140	5270.229276	-1276772.899075	16-24-10	89-51-52	1.547
W62-32	-97165.483	6.300	-2303.414	4.205	-14511.908974	-408620.948200	38-02-40	201-38-30	6.115
W62-31	-97160.668	17.087	-2299.646	7.356	-39293.682852	-714704.379194	16-17-47	158-15-07	12.785
W62-30	-97148.397	16.000	-2296.058	-9.199	-36736.351786	893707.561679	286-15-23	89-57-36	13.319
W62-1	-97144.668	2.292	-2308.845	-15.421	-5292.961666	1498031.000220	241-23-51	135-08-28	3.000
W62-2	-97146.104	-18.528	-2311.479	-7.709	42826.742807	748900.045052	196-32-18	135-08-27	17.829
W62-21	-97163.196	-20.864	-2316.554	7.628	48332.137596	-741134.584881	106-32-18	90-00-00	13.251
合計				倍面積	594.204399	-594.204399			67.846
				面 積	297.1021999	297.1021999			

面積（座標法）計算書

地番：W62-2

測点名	[1] X(i)	[2] X(i+1)-X(i-1)	[3] Y(i)	[4] Y(i+1)-Y(i-1)	[2]*[3]	[1]*[4]	方向角	夾角	距離
W62-29	-97149.226	27.135	-2293.214	4.826	-62225.428575	-468809.464633	286-15-23	90-00-00	2.963
W62-30	-97148.397	-11.442	-2296.058	-6.432	26270.686382	624881.122281	196-17-47	90-02-24	12.785
W62-31	-97160.668	-17.087	-2299.646	-7.356	39293.682852	714704.379194	218-02-40	201-44-53	6.115
W62-32	-97165.483	-13.316	-2303.414	-6.271	30672.618225	609295.208132	196-24-10	158-21-30	8.861
W62-33	-97173.984	-10.048	-2305.917	2.530	23169.288205	-245873.394080	107-05-26	90-41-16	5.265
W62-36	-97175.531	24.758	-2300.884	12.703	-56964.825088	-1234413.872897	16-15-23	89-09-57	27.401
合計				倍面積	216.022001	-216.022001			63.390
				面積	108.0110009	108.0110009			

面積（座標法）計算書

地番：W62-3

測点名	[1] X(i)	[2] X(i+1)-X(i-1)	[3] Y(i)	[4] Y(i+1)-Y(i-1)	[2]*[3]	[1]*[4]	方向角	夾角	距離
W62-36	-97175.531	-31.610	-2300.884	9.584	72730.978192	-931308.737130	107-05-26	90-50-03	18.051
W62-46	-97180.836	-5.334	-2283.630	17.353	12180.325836	-1686356.590267	106-18-00	179-12-34	0.103
W62-38	-97180.865	26.394	-2283.531	8.303	-60272.293915	-806889.611638	17-14-58	90-56-58	27.668
W62-28	-97154.442	31.639	-2275.327	-9.682	-71988.700530	940683.328584	286-15-23	89-00-25	18.632
W62-29	-97149.226	-21.089	-2293.214	-25.557	48362.510031	2482858.790836	196-15-23	90-00-00	27.401
合計				倍面積	1012.819614	-1012.819614			91.855
				面積	506.4098073	506.4098073			

面積（座標法）計算書

地番：W62-4

測点名	[1] X(i)	[2] X(i+1)-X(i-1)	[3] Y(i)	[4] Y(i+1)-Y(i-1)	[2]*[3]	[1]*[4]	方向角	夾角	距離
W62-27	-97154.566	26.487	-2274.900	7.987	-60254.993070	-775982.052312	286-17-00	89-02-02	0.226
W62-8	-97154.503	0.125	-2275.117	-0.427	-283.662273	41504.529957	286-15-23	179-58-23	0.219
W62-28	-97154.442	-26.362	-2275.327	-8.414	59982.116108	817478.895504	197-14-58	90-59-35	27.668
W62-38	-97180.865	-26.548	-2283.531	-7.777	60623.332039	755801.174199	106-18-00	89-03-02	0.445
W62-39	-97180.990	26.298	-2283.104	8.632	-60042.170803	-838827.169351	17-14-58	90-56-58	27.668
合計				倍面積	24.622001	-24.622001			56.226
				面積	12.3110006	12.3110006			

面積（座標法）計算書

地番：W62-5

測点名	[1] X(i)	[2] X(i+1)-X(i-1)	[3] Y(i)	[4] Y(i+1)-Y(i-1)	[2]*[3]	[1]*[4]	方向角	夾角	距離
W62-40	-97181.038	-36.959	-2282.939	27.826	84376.089358	-2704156.709710	106-18-00	89-03-02	37.539
W63-25	-97191.574	15.801	-2246.908	44.571	-35502.523235	-4331930.878518	17-58-02	91-40-02	27.687
W62-6	-97165.238	36.959	-2238.368	-27.826	-82728.769244	2703717.042417	286-17-00	88-18-58	37.886
W62-26	-97154.615	-15.801	-2274.734	-44.571	35942.190528	4330283.558404	197-14-58	90-57-58	27.668
合計				倍面積	2086.987407	-2086.987407			130.780
				面積	1043.4937036	1043.4937036			

面 積 (座 標 法) 計 算 書

地 番 : W62-6

測点名	[1] X(i)	[2] X(i+1)-X(i-1)	[3] Y(i)	[4] Y(i+1)-Y(i-1)	[2]*[3]	[1]*[4]	方向角	夾 角	距 離
W62-25	-97209.014	-35.026	-2285.180	21.362	80039.936239	-2076606.138968	106-33-41	88-48-06	31.035
W62-5	-97217.860	17.440	-2255.433	38.271	-39334.740136	-3720672.536349	17-58-02	91-24-21	27.634
W63-25	-97191.574	35.026	-2246.908	-21.362	-78699.451990	2076233.580880	286-18-00	88-19-58	31.138
W62-41	-97182.835	-17.440	-2276.795	-38.271	39707.298224	3719332.052101	197-45-35	91-27-35	27.489
合計				倍面積	1713.042336	-1713.042336			117.296
				面 積	856.5211681	856.5211681			

面積（座標法）計算書

地番：W62-7

測点名	[1] X(i)	[2] X(i+1)-X(i-1)	[3] Y(i)	[4] Y(i+1)-Y(i-1)	[2]*[3]	[1]*[4]	方向角	夾角	距離
W62-41	-97182.835	28.178	-2276.795	1.550	-64155.555018	-150648.340525	286-18-00	88-32-25	7.121
W62-46	-97180.836	-10.359	-2283.630	-10.691	23656.689898	1038988.015231	197-19-54	91-01-54	12.946
W62-45	-97193.194	-26.179	-2287.486	-8.273	59883.440463	804096.137228	197-43-20	180-23-26	14.509
W62-24	-97207.015	-15.820	-2291.903	2.306	36258.234882	-224193.874909	106-33-41	88-50-21	7.014
W62-25	-97209.014	24.180	-2285.180	15.108	-55255.861473	-1468628.885776	17-45-35	91-11-54	27.489
合計				倍面積	386.948751	-386.948751			69.079
				面積	193.4743758	193.4743758			

面積（座標法）計算書

地番：W62-8

測点名	[1] X(i)	[2] X(i+1)-X(i-1)	[3] Y(i)	[4] Y(i+1)-Y(i-1)	[2]*[3]	[1]*[4]	方向角	夾角	距離
W62-23	-97205.480	-27.899	-2297.065	-2.679	64085.345279	260375.346852	106-33-41	90-00-00	5.385
W62-24	-97207.015	12.286	-2291.903	9.578	-28158.100803	-931066.217018	17-43-20	91-09-39	14.509
W62-45	-97193.194	26.179	-2287.486	8.273	-59883.440463	-804096.137228	17-19-54	179-36-34	12.946
W62-46	-97180.836	14.078	-2283.630	-1.738	-32148.844879	168905.822722	287-05-26	89-45-32	5.853
W62-37	-97179.116	-24.644	-2289.224	-13.435	56415.121910	1305571.103628	196-33-41	89-28-15	27.505
合計				倍面積	310.081043	-310.081043			66.198
				面積	155.0405216	155.0405216			

面積（座標法）計算書

地番：W62-9

測点名	[1] X(i)	[2] X(i+1)-X(i-1)	[3] Y(i)	[4] Y(i+1)-Y(i-1)	[2]*[3]	[1]*[4]	方向角	夾角	距離
W62-37	-97179.116	31.496	-2289.224	-8.852	-72101.380707	860231.400705	287-05-26	90-31-45	17.463
W62-33	-97173.984	8.885	-2305.917	-29.419	-20488.880461	2858741.938652	286-25-53	179-20-27	13.269
W62-22	-97170.231	-19.351	-2318.643	-19.587	44867.349609	1903293.130501	196-32-18	90-06-25	24.101
W62-3	-97193.335	-27.500	-2325.504	-4.478	63952.062269	435276.908233	151-33-00	135-00-42	5.000
W62-4	-97197.731	-12.145	-2323.122	28.439	28214.997486	-2764227.965216	106-33-41	135-00-41	27.185
W62-23	-97205.480	18.615	-2297.065	33.897	-42759.747798	-3294999.813274	16-33-41	90-00-00	27.505
合計				倍面積	1684.400397	-1684.400397			114.523
				面積	842.2001986	842.2001986			

面積（座標法）計算書

地番：W62-10

測点名	[1] X(i)	[2] X(i+1)-X(i-1)	[3] Y(i)	[4] Y(i+1)-Y(i-1)	[2]*[3]	[1]*[4]	方向角	夾角	距離
W62-21	-97163.196	-3.263	-2316.554	-14.792	7558.343144	1437232.279556	196-32-18	90-00-00	7.338
W62-22	-97170.231	-10.788	-2318.643	10.638	25013.632087	-1033669.482516	106-25-53	89-53-35	13.269
W62-33	-97173.984	3.263	-2305.917	14.792	-7523.634904	-1437391.855716	16-24-10	89-58-17	7.314
W62-34	-97166.968	10.788	-2303.851	-10.638	-24854.055927	1033634.774276	286-32-18	90-08-08	13.251
合計				倍面積	194.284399	-194.284399			41.172
				面積	97.1421999	97.1421999			

面積（座標法）計算書

地番：W62-11

測点名	[1] X(i)	[2] X(i+1)-X(i-1)	[3] Y(i)	[4] Y(i+1)-Y(i-1)	[2]*[3]	[1]*[4]	方向角	夾角	距離
W62-26	-97154.615	26.472	-2274.734	8.039	-60216.055403	-781053.296541	286-17-00	89-02-02	0.172
W62-27	-97154.566	-26.375	-2274.900	-8.370	60000.769395	813150.941136	197-14-58	90-57-58	27.668
W62-39	-97180.990	-26.472	-2283.104	-8.039	60437.614481	781265.333620	106-18-00	89-03-02	0.172
W62-40	-97181.038	26.375	-2282.939	8.370	-60212.806473	-813372.500213	17-14-58	90-56-58	27.668
合計				倍面積	9.521999	-9.521999			55.680
				面積	4.7609996	4.7609996			