

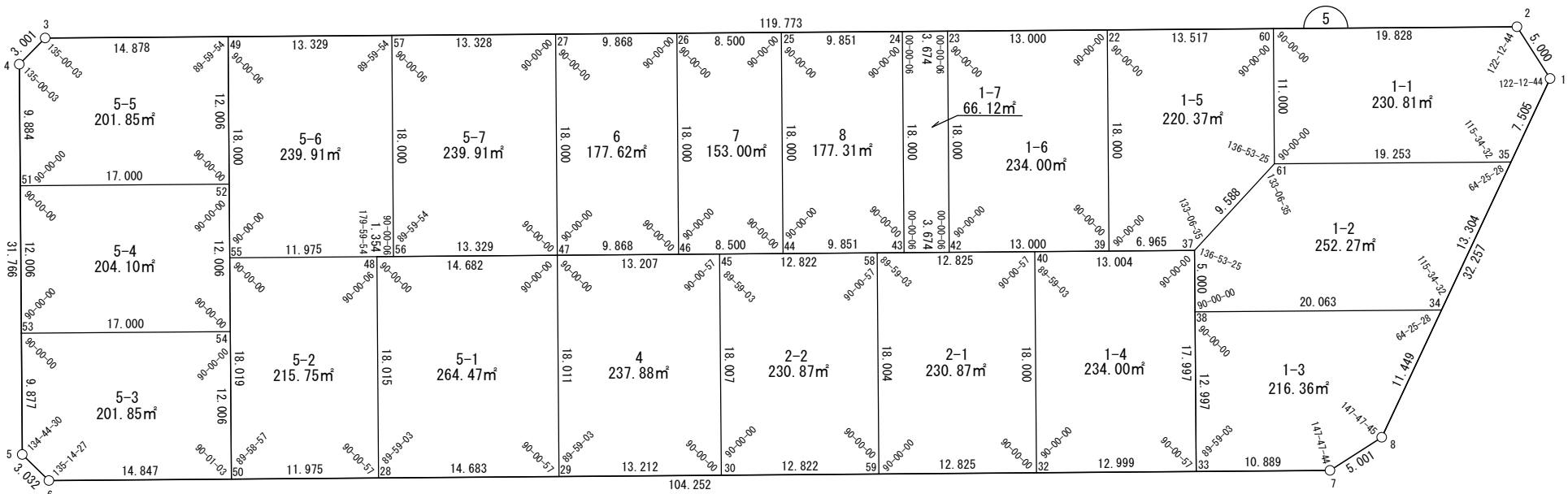
面積一覧表

地番名	面積
W5-1-1	230.81㎡
W5-1-2	252.27㎡
W5-1-3	216.36㎡
W5-1-4	234.00㎡
W5-1-5	220.37㎡
W5-1-6	234.00㎡
W5-1-7	66.12㎡
W5-2-1	230.87㎡
W5-2-2	230.87㎡
W5-4	237.88㎡
W5-5-1	264.47㎡
W5-5-2	215.75㎡
W5-5-3	201.85㎡
W5-5-4	204.10㎡

地番名	面積
W5-5-5	201.85㎡
W5-5-6	239.91㎡
W5-5-7	239.91㎡
W5-6	177.62㎡
W5-7	153.00㎡
W5-8	177.31㎡
合計	4229.32㎡



世界測地系



座 標 一 覧 表

測 点 名	X 座 標	Y 座 標
W5-1	-97245.356	-1539.743
W5-2	-97246.705	-1544.558
W5-3	-97361.507	-1578.704
W5-4	-97364.146	-1577.275
W5-5	-97373.203	-1546.827
W5-6	-97371.748	-1544.168
W5-7	-97271.814	-1514.475
W5-8	-97266.999	-1515.824
W5-22	-97278.666	-1554.064
W5-23	-97291.127	-1557.771
W5-24	-97294.648	-1558.818
W5-25	-97304.090	-1561.626
W5-26	-97312.238	-1564.050
W5-27	-97321.696	-1566.863
W5-28	-97346.037	-1536.528

測 点 名	X 座 標	Y 座 標
W5-29	-97331.962	-1532.346
W5-30	-97319.298	-1528.583
W5-32	-97294.713	-1521.278
W5-33	-97282.252	-1517.576
W5-34	-97259.317	-1524.314
W5-35	-97250.391	-1534.178
W5-37	-97277.122	-1534.826
W5-38	-97278.547	-1530.033
W5-39	-97283.797	-1536.811
W5-40	-97289.586	-1538.533
W5-42	-97296.258	-1540.518
W5-43	-97299.779	-1541.565
W5-44	-97309.222	-1544.373
W5-45	-97314.169	-1545.845
W5-46	-97317.369	-1546.797

測 点 名	X 座 標	Y 座 標
W5-47	-97326.828	-1549.610
W5-48	-97340.901	-1553.795
W5-49	-97347.247	-1574.462
W5-50	-97357.516	-1539.939
W5-51	-97366.964	-1567.801
W5-52	-97350.670	-1562.954
W5-53	-97370.387	-1556.294
W5-54	-97354.093	-1551.447
W5-55	-97352.379	-1557.210
W5-56	-97339.603	-1553.410
W5-57	-97334.471	-1570.662
W5-58	-97301.879	-1542.189
W5-59	-97307.007	-1524.931
W5-60	-97265.709	-1550.211
W5-61	-97268.845	-1539.667

面積（座標法）計算書

地 番： W5-1-1

測点名	[1] X(i)	[2] X(i+1)-X(i-1)	[3] Y(i)	[4] Y(i+1)-Y(i-1)	[2]*[3]	[1]*[4]	方向角	夾 角	距 離
W5-1	-97245.356	3.687	-1539.743	-10.380	-5676.438067	1009381.287036	254-21-06	122-12-44	5.000
W5-2	-97246.705	-20.353	-1544.558	-10.467	31437.162724	1017911.805019	196-33-50	122-12-44	19.828
W5-60	-97265.709	-22.141	-1550.211	4.891	34322.829988	-475723.177792	106-33-50	90-00-00	11.000
W5-61	-97268.845	15.318	-1539.667	16.032	-23584.932332	-1559443.010611	16-33-50	90-00-00	19.253
W5-35	-97250.391	23.489	-1534.178	-0.076	-36036.985312	7411.459347	312-08-22	115-34-32	7.505
合計				倍面積	461.637000	-461.637000			62.586
				面 積	230.8185000	230.8185000			

面積（座標法）計算書

地番：W5-1-2

測点名	[1] X(i)	[2] X(i+1)-X(i-1)	[3] Y(i)	[4] Y(i+1)-Y(i-1)	[2]*[3]	[1]*[4]	方向角	夾角	距離
W5-34	-97259.317	28.156	-1524.314	-4.145	-42918.485706	403156.899182	312-08-22	115-34-32	13.304
W5-35	-97250.391	-9.528	-1534.178	-15.354	14618.162470	1493136.179419	196-33-50	64-25-28	19.253
W5-61	-97268.845	-26.731	-1539.667	-0.647	41156.097190	62965.615552	149-40-25	133-06-35	9.588
W5-37	-97277.122	-9.702	-1534.826	9.634	14890.576597	-937162.715629	106-33-50	136-53-25	5.000
W5-38	-97278.547	17.805	-1530.033	10.512	-27241.797536	-1022600.531539	16-33-50	90-00-00	20.063
合計				倍面積	504.553014	-504.553014			67.208
				面積	252.2765073	252.2765073			

面積（座標法）計算書

地番：W5-1-3

測点名	[1] X(i)	[2] X(i+1)-X(i-1)	[3] Y(i)	[4] Y(i+1)-Y(i-1)	[2]*[3]	[1]*[4]	方向角	夾角	距離
W5-34	-97259.317	-11.549	-1524.314	-14.209	17603.595035	1381980.413764	196-33-50	64-25-28	20.063
W5-38	-97278.547	-22.935	-1530.033	6.738	35091.714742	-655429.707973	106-33-50	90-00-00	12.997
W5-33	-97282.252	6.733	-1517.576	15.559	-10218.316418	-1513592.130075	16-32-53	89-59-03	10.889
W5-7	-97271.814	15.254	-1514.475	1.752	-23101.287786	-170420.130315	344-20-37	147-47-44	5.001
W5-8	-97266.999	12.497	-1515.824	-9.839	-18942.981320	957028.830346	312-08-22	147-47-45	11.449
合計				倍面積	432.724253	-432.724253			60.399
				面積	216.3621268	216.3621268			

面積（座標法）計算書

地番：W5-1-4

測点名	[1] X(i)	[2] X(i+1)-X(i-1)	[3] Y(i)	[4] Y(i+1)-Y(i-1)	[2]*[3]	[1]*[4]	方向角	夾角	距離
W5-32	-97294.713	7.334	-1521.278	20.957	-11156.906670	-2039007.333590	16-32-53	90-00-00	12.999
W5-33	-97282.252	17.591	-1517.576	-13.547	-26696.066348	1317916.282775	286-33-50	90-00-57	17.997
W5-37	-97277.122	-7.334	-1534.826	-20.957	11256.261570	2038638.673306	196-33-50	90-00-00	13.004
W5-40	-97289.586	-17.591	-1538.533	13.547	27064.726632	-1318015.637676	106-32-53	89-59-03	18.000
合計				倍面積	468.015184	-468.015184			62.000
				面積	234.0075921	234.0075921			

面積（座標法）計算書

地番：W5-1-5

測点名	[1] X(i)	[2] X(i+1)-X(i-1)	[3] Y(i)	[4] Y(i+1)-Y(i-1)	[2]*[3]	[1]*[4]	方向角	夾角	距離
W5-60	-97265.709	-9.821	-1550.211	-14.397	15223.881950	1400347.566185	196-33-50	90-00-00	13.517
W5-22	-97278.666	-18.088	-1554.064	13.399	28109.906256	-1303478.530769	106-33-50	90-00-00	18.000
W5-39	-97283.797	1.544	-1536.811	19.239	-2373.063229	-1871601.341019	16-33-50	90-00-00	6.965
W5-37	-97277.122	14.952	-1534.826	-2.856	-22948.802526	277814.152950	329-40-25	133-06-35	9.588
W5-61	-97268.845	11.412	-1539.667	-15.385	-17571.164857	1496477.395058	286-33-50	136-53-25	11.000
合計				倍面積	440.757594	-440.757594			59.070
				面積	220.3787971	220.3787971			

面積（座標法）計算書

地番：W5-1-6

測点名	[1] X(i)	[2] X(i+1)-X(i-1)	[3] Y(i)	[4] Y(i+1)-Y(i-1)	[2]*[3]	[1]*[4]	方向角	夾角	距離
W5-22	-97278.666	-7.329	-1554.064	-20.959	11390.029041	2038883.364180	196-33-50	90-00-00	13.000
W5-23	-97291.127	-17.592	-1557.771	13.547	27404.693452	-1317990.769620	106-33-50	90-00-00	18.000
W5-42	-97296.258	7.329	-1540.518	20.959	-11290.741452	-2039252.083792	16-33-50	90-00-00	13.000
W5-39	-97283.797	17.592	-1536.811	-13.547	-27035.973839	1317891.482032	286-33-50	90-00-00	18.000
合計				倍面積	468.007200	-468.007200			62.000
				面積	234.0036005	234.0036005			

面積（座標法）計算書

地番：W5-1-7

測点名	[1] X(i)	[2] X(i+1)-X(i-1)	[3] Y(i)	[4] Y(i+1)-Y(i-1)	[2]*[3]	[1]*[4]	方向角	夾角	距離
W5-43	-97299.779	-1.610	-1541.565	18.300	2482.298599	-1780621.760027	16-33-50	90-00-00	3.674
W5-42	-97296.258	8.653	-1540.518	-16.206	-13329.820020	1576755.050464	286-33-50	90-00-00	18.000
W5-23	-97291.127	1.610	-1557.771	-18.300	-2508.393780	1780463.410245	196-33-50	90-00-00	3.674
W5-24	-97294.648	-8.653	-1558.818	16.206	13488.169802	-1576728.955283	106-33-50	90-00-00	18.000
合計				倍面積 面積	132.254600 66.1273003	-132.254600 66.1273003			43.348

面積（座標法）計算書

地番：W5-2-1

測点名	[1] X(i)	[2] X(i+1)-X(i-1)	[3] Y(i)	[4] Y(i+1)-Y(i-1)	[2]*[3]	[1]*[4]	方向角	夾角	距離
W5-32	-97294.713	17.421	-1521.278	-13.602	-26501.431760	1323387.111272	286-32-53	90-00-00	18.000
W5-40	-97289.586	-7.166	-1538.533	-20.911	11024.957712	2034403.770892	196-33-50	90-00-57	12.825
W5-58	-97301.879	-17.421	-1542.189	13.602	26865.708481	-1323484.580552	106-32-53	89-59-03	18.004
W5-59	-97307.007	7.166	-1524.931	20.911	-10927.488433	-2034768.047612	16-32-53	90-00-00	12.825
合計				倍面積	461.745999	-461.745999			61.654
				面積	230.8729998	230.8729998			

面積（座標法）計算書

地番：W5-2-2

測点名	[1] X(i)	[2] X(i+1)-X(i-1)	[3] Y(i)	[4] Y(i+1)-Y(i-1)	[2]*[3]	[1]*[4]	方向角	夾角	距離
W5-58	-97301.879	-7.162	-1542.189	-20.913	11045.855431	2034922.067593	196-33-50	90-00-57	12.822
W5-45	-97314.169	-17.419	-1545.845	13.606	26927.202781	-1324053.394664	106-32-53	89-59-03	18.007
W5-30	-97319.298	7.162	-1528.583	20.913	-10948.403354	-2035286.361516	16-32-53	90-00-00	12.822
W5-59	-97307.007	17.419	-1524.931	-13.606	-26562.908858	1323955.942588	286-32-53	90-00-00	18.004
合計				倍面積	461.745999	-461.745999			61.655
				面積	230.8729997	230.8729997			

面積（座標法）計算書

地番： W5-4

測点名	[1] X(i)	[2] X(i+1)-X(i-1)	[3] Y(i)	[4] Y(i+1)-Y(i-1)	[2]*[3]	[1]*[4]	方向角	夾角	距離
W5-45	-97314.169	-7.530	-1545.845	-21.026	11639.717696	2046168.894006	196-33-50	90-00-57	13.207
W5-47	-97326.828	-17.793	-1549.610	13.499	27572.444564	-1313768.937336	106-33-50	90-00-00	18.011
W5-29	-97331.962	7.530	-1532.346	21.026	-11538.078084	-2046543.020393	16-32-53	89-59-03	13.212
W5-30	-97319.298	17.793	-1528.583	-13.499	-27198.318177	1313667.297724	286-32-53	90-00-00	18.007
合計				倍面積	475.765998	-475.765998			62.437
				面積	237.8829992	237.8829992			

面積（座標法）計算書

地番：W5-5-1

測点名	[1] X(i)	[2] X(i+1)-X(i-1)	[3] Y(i)	[4] Y(i+1)-Y(i-1)	[2]*[3]	[1]*[4]	方向角	夾角	距離
W5-28	-97346.037	8.939	-1536.528	21.449	-13734.346460	-2088002.562784	16-32-53	89-59-03	14.683
W5-29	-97331.962	19.209	-1532.346	-13.082	-29434.864862	1273263.229097	286-33-50	90-00-57	18.011
W5-47	-97326.828	-8.939	-1549.610	-21.449	13851.277609	2087590.543159	196-33-50	90-00-00	14.682
W5-48	-97340.901	-19.209	-1553.795	13.082	29846.884488	-1273380.160247	106-33-50	90-00-00	18.015
合計				倍面積	528.950774	-528.950774			65.391
				面積	264.4753875	264.4753875			

面積（座標法）計算書

地番：W5-5-2

測点名	[1] X(i)	[2] X(i+1)-X(i-1)	[3] Y(i)	[4] Y(i+1)-Y(i-1)	[2]*[3]	[1]*[4]	方向角	夾角	距離
W5-55	-97352.379	-16.615	-1557.210	13.857	25873.395449	-1348971.249501	106-33-56	90-00-00	18.019
W5-50	-97357.516	6.342	-1539.939	20.682	-9766.486087	-2013509.252331	16-32-53	89-58-57	11.975
W5-28	-97346.037	16.615	-1536.528	-13.857	-25529.765918	1348883.369314	286-33-50	90-00-57	18.015
W5-48	-97340.901	-6.342	-1553.795	-20.682	9854.366273	2013165.622800	196-33-56	90-00-06	11.975
合計				倍面積	431.509718	-431.509718			59.984
				面積	215.7548592	215.7548592			

面積（座標法）計算書

地番：W5-5-3

測点名	[1] X(i)	[2] X(i+1)-X(i-1)	[3] Y(i)	[4] Y(i+1)-Y(i-1)	[2]*[3]	[1]*[4]	方向角	夾角	距離
W5-5	-97373.203	-1.360	-1546.827	12.126	2104.239182	-1180761.802668	61-18-26	134-44-30	3.032
W5-6	-97371.748	15.687	-1544.168	6.888	-24223.745019	-670700.825236	16-32-53	135-14-27	14.847
W5-50	-97357.516	17.655	-1539.939	-7.279	-27187.266343	708692.136018	286-33-56	90-01-03	12.006
W5-54	-97354.093	-12.871	-1551.447	-16.355	19969.170686	1592202.053493	196-33-56	90-00-00	17.000
W5-53	-97370.387	-19.110	-1556.294	4.620	29741.303032	-449835.263145	106-33-56	90-00-00	9.877
合計				倍面積 面積	403.701537 201.8507690	-403.701537 201.8507690			56.762

面積（座標法）計算書

地番：W5-5-4

測点名	[1] X(i)	[2] X(i+1)-X(i-1)	[3] Y(i)	[4] Y(i+1)-Y(i-1)	[2]*[3]	[1]*[4]	方向角	夾角	距離
W5-51	-97366.964	-19.717	-1567.801	6.661	30912.996529	-648535.930476	106-33-56	90-00-00	12.006
W5-53	-97370.387	12.871	-1556.294	16.354	-20031.680718	-1592442.382981	16-33-56	90-00-00	17.000
W5-54	-97354.093	19.717	-1551.447	-6.661	-30590.528306	648450.197429	286-33-56	90-00-00	12.006
W5-52	-97350.670	-12.871	-1562.954	-16.354	20117.413764	1592119.914758	196-33-56	90-00-00	17.000
合計				倍面積	408.201269	-408.201269			58.012
				面積	204.1006346	204.1006346			

面積（座標法）計算書

地番：W5-5-5

測点名	[1] X(i)	[2] X(i+1)-X(i-1)	[3] Y(i)	[4] Y(i+1)-Y(i-1)	[2]*[3]	[1]*[4]	方向角	夾角	距離
W5-49	-97347.247	-10.838	-1574.462	-15.749	17063.244997	1533158.472727	196-33-50	89-59-54	14.878
W5-3	-97361.507	-16.900	-1578.704	-2.813	26679.369049	273831.359381	151-33-53	135-00-03	3.001
W5-4	-97364.146	-5.457	-1577.275	10.903	8607.038027	-1061513.052781	106-33-56	135-00-03	9.884
W5-51	-97366.964	13.476	-1567.801	14.320	-21128.398064	-1394334.033646	16-33-56	90-00-00	17.000
W5-52	-97350.670	19.718	-1562.954	-6.661	-30817.553625	648453.553933	286-33-56	90-00-00	12.006
合計				倍面積	403.700385	-403.700385			56.769
				面積	201.8501929	201.8501929			

面積（座標法）計算書

地番：W5-5-6

測点名	[1] X(i)	[2] X(i+1)-X(i-1)	[3] Y(i)	[4] Y(i+1)-Y(i-1)	[2]*[3]	[1]*[4]	方向角	夾角	距離
W5-49	-97347.247	-17.907	-1574.462	13.453	28194.599371	-1309593.282735	106-33-56	90-00-06	18.000
W5-55	-97352.379	6.346	-1557.210	20.667	-9882.116881	-2011961.025339	16-33-56	90-00-00	11.975
W5-48	-97340.901	12.775	-1553.795	3.800	-19850.458965	-369905.473823	16-33-50	179-59-54	1.354
W5-56	-97339.603	6.430	-1553.410	-16.867	-9987.665564	1641825.566116	286-33-56	90-00-06	18.000
W5-57	-97334.471	-7.644	-1570.662	-21.053	12005.470196	2049154.387624	196-33-50	89-59-54	13.329
合計				倍面積	479.828156	-479.828156			62.658
				面積	239.9140781	239.9140781			

面積（座標法）計算書

地番：W5-5-7

測点名	[1] X(i)	[2] X(i+1)-X(i-1)	[3] Y(i)	[4] Y(i+1)-Y(i-1)	[2]*[3]	[1]*[4]	方向角	夾角	距離
W5-56	-97339.603	7.644	-1553.410	21.053	-11873.790941	-2049266.056682	16-33-50	89-59-54	13.329
W5-47	-97326.828	17.907	-1549.610	-13.453	-27749.189102	1309357.079294	286-33-50	90-00-00	18.000
W5-27	-97321.696	-7.644	-1566.863	-21.053	11976.623100	2048889.060685	196-33-50	90-00-00	13.328
W5-57	-97334.471	-17.907	-1570.662	13.453	28126.185099	-1309459.911454	106-33-56	90-00-06	18.000
合計				倍面積	479.828156	-479.828156			62.657
				面積	239.9140783	239.9140783			

面積（座標法）計算書

地番：W5-6

測点名	[1] X(i)	[2] X(i+1)-X(i-1)	[3] Y(i)	[4] Y(i+1)-Y(i-1)	[2]*[3]	[1]*[4]	方向角	夾角	距離
W5-26	-97312.238	-4.327	-1564.050	-20.066	6767.590434	1952692.641683	196-33-50	90-00-00	9.868
W5-27	-97321.696	-14.590	-1566.863	14.440	22860.578600	-1405307.686387	106-33-50	90-00-00	18.000
W5-47	-97326.828	4.327	-1549.610	20.066	-6705.109816	-1952985.409066	16-33-50	90-00-00	9.868
W5-46	-97317.369	14.590	-1546.797	-14.440	-22567.811217	1405245.205769	286-33-50	90-00-00	18.000
合計				倍面積	355.248000	-355.248000			55.736
				面積	177.6240002	177.6240002			

面積（座標法）計算書

地番：W5-7

測点名	[1] X(i)	[2] X(i+1)-X(i-1)	[3] Y(i)	[4] Y(i+1)-Y(i-1)	[2]*[3]	[1]*[4]	方向角	夾角	距離
W5-25	-97304.090	-3.016	-1561.626	-19.676	4709.901254	1914589.215645	196-33-50	90-00-00	8.500
W5-26	-97312.238	-13.279	-1564.050	14.830	20769.153046	-1443114.228975	106-33-50	90-00-00	18.000
W5-46	-97317.369	3.016	-1546.797	19.676	-4665.174441	-1914850.499632	16-33-50	90-00-00	8.500
W5-44	-97309.222	13.279	-1544.373	-14.830	-20507.869059	1443069.502162	286-33-50	90-00-00	18.000
合計				倍面積	306.010800	-306.010800			53.000
				面積	153.0054001	153.0054001			

面積（座標法）計算書

地番：W5-8

測点名	[1] X(i)	[2] X(i+1)-X(i-1)	[3] Y(i)	[4] Y(i+1)-Y(i-1)	[2]*[3]	[1]*[4]	方向角	夾角	距離
W5-24	-97294.648	-4.311	-1558.818	-20.061	6719.494861	1951867.072960	196-33-50	90-00-00	9.851
W5-25	-97304.090	-14.574	-1561.626	14.445	22758.673139	-1405526.122474	106-33-50	90-00-00	18.000
W5-44	-97309.222	4.311	-1544.373	20.061	-6657.229132	-1952159.441830	16-33-50	90-00-00	9.851
W5-43	-97299.779	14.574	-1541.565	-14.445	-22466.304268	1405463.856745	286-33-50	90-00-00	18.000
合計				倍面積	354.634599	-354.634599			55.702
				面積	177.3172998	177.3172998			