

面積一覧表

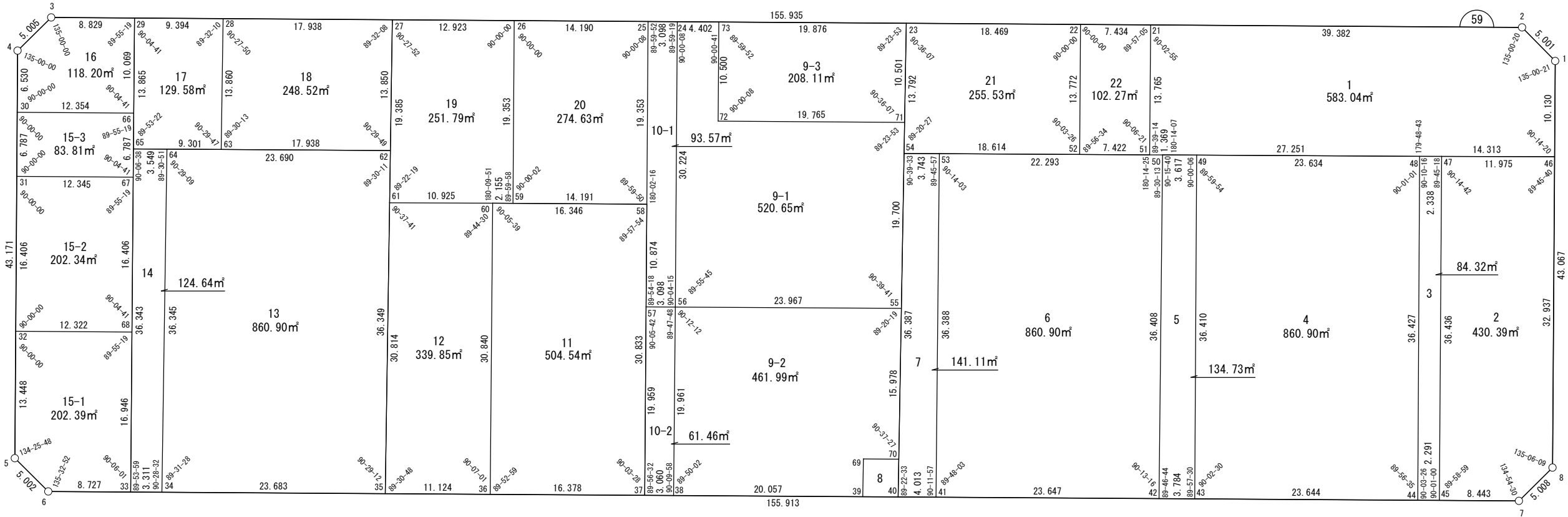
地番名	地積	地番名	地積
W59-1	583.04㎡	W59-10-1	93.57㎡
W59-2	430.39㎡	W59-10-2	61.46㎡
W59-3	84.32㎡	W59-11	504.54㎡
W59-4	860.90㎡	W59-12	339.85㎡
W59-5	134.73㎡	W59-13	860.90㎡
W59-6	860.90㎡	W59-14	124.64㎡
W59-7	141.11㎡	W59-15-1	202.39㎡
W59-8	15.00㎡	W59-15-2	202.34㎡
W59-9-1	520.65㎡	W59-15-3	83.81㎡
W59-9-2	461.99㎡	W59-16	118.20㎡
W59-9-3	208.11㎡	W59-17	129.58㎡

座 標 一 覧 表

測 点 名	X 座 標	Y 座 標	測 点 名	X 座 標	Y 座 標
W59-1	-97178.775	-2464.135	W59-25	-97269.978	-2494.934
W59-2	-97181.158	-2468.532	W59-26	-97283.580	-2498.977
W59-3	-97330.629	-2512.963	W59-27	-97295.967	-2502.659
W59-4	-97335.030	-2510.579	W59-28	-97313.161	-2507.770
W59-5	-97347.330	-2469.198	W59-29	-97322.166	-2510.447
W59-6	-97344.904	-2464.824	W59-30	-97336.890	-2504.319
W59-7	-97195.437	-2420.457	W59-31	-97338.824	-2497.814
W59-8	-97191.038	-2422.851	W59-32	-97343.499	-2482.088
W59-21	-97218.908	-2479.753	W59-33	-97336.538	-2462.340
W59-22	-97226.033	-2481.871	W59-34	-97333.364	-2461.398
W59-23	-97243.737	-2487.134	W59-35	-97310.660	-2454.659
W59-24	-97267.008	-2494.051	W59-36	-97299.996	-2451.493

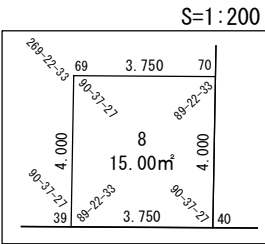


世界測地系



測 点 名	X 座 標	Y 座 標
W59-37	-97284.295	-2446.833
W59-38	-97281.361	-2445.962
W59-39	-97262.134	-2440.255
W59-40	-97258.539	-2439.187
W59-41	-97254.691	-2438.045
W59-42	-97232.022	-2431.316
W59-43	-97228.394	-2430.240
W59-44	-97205.728	-2423.511
W59-45	-97203.531	-2422.859
W59-46	-97181.660	-2454.424
W59-47	-97193.153	-2457.786
W59-48	-97195.397	-2458.443
W59-49	-97218.059	-2465.152
W59-50	-97221.527	-2466.179
W59-51	-97222.841	-2466.562
W59-52	-97229.957	-2468.670
W59-53	-97244.216	-2472.893
W59-54	-97247.805	-2473.956
W59-55	-97252.645	-2458.277

測 点 名	X 座 標	Y 座 標
W59-56	-97275.626	-2465.082
W59-57	-97278.596	-2465.961
W59-58	-97275.491	-2476.383
W59-59	-97289.094	-2480.426
W59-60	-97291.160	-2481.040
W59-61	-97301.641	-2484.123
W59-62	-97300.021	-2489.416
W59-63	-97317.218	-2494.517
W59-64	-97322.733	-2496.153
W59-65	-97326.135	-2497.162
W59-66	-97325.048	-2500.799
W59-67	-97326.991	-2494.297
W59-68	-97331.687	-2478.577
W59-69	-97260.954	-2444.077
W59-70	-97257.359	-2443.010
W59-71	-97246.834	-2477.100
W59-72	-97265.780	-2482.732
W59-73	-97262.788	-2492.797



面積（座標法）計算書

地 番： W59-1

測点名	[1] X(i)	[2] X(i+1)-X(i-1)	[3] Y(i)	[4] Y(i+1)-Y(i-1)	[2]*[3]	[1]*[4]	方向角	夾 角	距 離
W59-1	-97178.775	0.502	-2464.135	-14.108	-1236.939834	1370955.451100	241-32-57	135-00-21	5.001
W59-2	-97181.158	-40.132	-2468.532	-15.618	99067.790107	1517792.327548	196-33-17	135-00-20	39.382
W59-21	-97218.908	-41.683	-2479.753	1.970	103363.855669	-191501.035997	106-36-12	90-02-55	13.765
W59-51	-97222.841	-2.619	-2466.562	13.574	6460.534902	-1319728.556669	16-15-26	89-39-14	1.369
W59-50	-97221.527	27.444	-2466.179	8.120	-67681.917637	-789397.128173	16-29-33	180-14-07	27.251
W59-48	-97195.397	39.867	-2458.443	11.755	-98010.958133	-1142490.542149	16-18-16	179-48-43	14.313
W59-46	-97181.660	16.622	-2454.424	-5.692	-40796.281128	553203.400395	286-32-36	90-14-20	10.130
合計				倍面積	1166.083944	-1166.083944			111.211
				面 積	583.0419725	583.0419725			

面積（座標法）計算書

地番：W59-2

測点名	[1] X(i)	[2] X(i+1)-X(i-1)	[3] Y(i)	[4] Y(i+1)-Y(i-1)	[2]*[3]	[1]*[4]	方向角	夾角	距離
W59-7	-97195.437	12.493	-2420.457	0.008	-30239.241118	-819.435289	331-26-27	134-54-30	5.008
W59-8	-97191.038	13.777	-2422.851	-33.968	-33380.291019	3301346.588200	286-32-36	135-06-09	32.937
W59-46	-97181.660	-2.115	-2454.424	-34.935	5190.331384	3395058.472010	196-18-16	89-45-40	11.975
W59-47	-97193.153	-21.872	-2457.786	31.565	53755.822131	-3067894.724463	106-32-58	90-14-42	36.436
W59-45	-97203.531	-2.284	-2422.859	37.329	5534.167054	-3628551.688889	16-31-57	89-58-59	8.443
合計				倍面積	860.788432	-860.788432			94.799
				面積	430.3942162	430.3942162			

面積（座標法）計算書

地番：W59-3

測点名	[1] X(i)	[2] X(i+1)-X(i-1)	[3] Y(i)	[4] Y(i+1)-Y(i-1)	[2]*[3]	[1]*[4]	方向角	夾角	距離
W59-44	-97205.728	-8.135	-2423.511	35.583	19714.149945	-3458883.410041	16-31-58	90-03-26	2.291
W59-45	-97203.531	12.575	-2422.859	-34.275	-30466.966461	3331633.121155	286-32-58	90-01-00	36.436
W59-47	-97193.153	8.135	-2457.786	-35.583	-19992.959804	3458435.959468	196-18-16	89-45-18	2.338
W59-48	-97195.397	-12.575	-2458.443	34.275	30914.417034	-3331354.311296	106-28-32	90-10-16	36.427
合計				倍面積	168.640713	-168.640713			77.492
				面積	84.3203566	84.3203566			

面積（座標法）計算書

地番：W59-4

測点名	[1] X(i)	[2] X(i+1)-X(i-1)	[3] Y(i)	[4] Y(i+1)-Y(i-1)	[2]*[3]	[1]*[4]	方向角	夾角	距離
W59-43	-97228.394	12.331	-2430.240	41.641	-29967.237737	-4048661.890563	16-31-57	90-02-30	23.644
W59-44	-97205.728	32.997	-2423.511	-28.203	-79969.403484	2741495.273983	286-28-32	89-56-35	36.427
W59-48	-97195.397	-12.331	-2458.443	-41.641	30315.008671	4047287.857456	196-29-33	90-01-01	23.634
W59-49	-97218.059	-32.997	-2465.152	28.203	81343.436591	-2741843.044917	106-29-27	89-59-54	36.410
合計				倍面積	1721.804041	-1721.804041			120.115
				面積	860.9020207	860.9020207			

面積（座標法）計算書

地番：W59-5

測点名	[1] X(i)	[2] X(i+1)-X(i-1)	[3] Y(i)	[4] Y(i+1)-Y(i-1)	[2]*[3]	[1]*[4]	方向角	夾角	距離
W59-42	-97232.022	-6.867	-2431.316	35.939	16696.675387	-3494460.480516	16-31-57	89-46-44	3.784
W59-43	-97228.394	13.963	-2430.240	-33.836	-33933.640637	3289798.970718	286-29-27	89-57-30	36.410
W59-49	-97218.059	6.867	-2465.152	-35.939	-16929.037219	3493958.655628	196-29-33	90-00-06	3.617
W59-50	-97221.527	-13.963	-2466.179	33.836	34435.465525	-3289566.608886	106-45-13	90-15-40	36.408
合計				倍面積	269.463056	-269.463056			80.219
				面積	134.7315281	134.7315281			

面積（座標法）計算書

地番：W59-6

測点名	[1] X(i)	[2] X(i+1)-X(i-1)	[3] Y(i)	[4] Y(i+1)-Y(i-1)	[2]*[3]	[1]*[4]	方向角	夾角	距離
W59-41	-97254.691	12.194	-2438.045	41.576	-29729.964894	-4043495.693588	16-31-57	89-48-03	23.647
W59-42	-97232.022	33.165	-2431.316	-28.133	-80633.827562	2735474.738206	286-45-13	90-13-16	36.408
W59-50	-97221.527	9.181	-2466.179	-35.246	-22641.616443	3426651.732436	196-15-26	89-30-13	1.369
W59-51	-97222.841	-22.689	-2466.562	-6.714	55964.027407	652728.603072	196-29-51	180-14-25	22.293
W59-53	-97244.216	-31.851	-2472.893	28.517	78763.184839	-2773081.183473	106-43-54	90-14-03	36.388
合計				倍面積	1721.803346	-1721.803346			120.105
				面積	860.9016733	860.9016733			

面積（座標法）計算書

地番：W59-7

測点名	[1] X(i)	[2] X(i+1)-X(i-1)	[3] Y(i)	[4] Y(i+1)-Y(i-1)	[2]*[3]	[1]*[4]	方向角	夾角	距離
W59-53	-97244.216	6.886	-2472.893	-35.910	-17029.571024	3492057.353281	196-29-51	89-45-57	3.743
W59-54	-97247.805	-14.323	-2473.956	33.705	35434.181296	-3277757.784974	107-09-24	90-39-33	36.387
W59-40	-97258.539	-6.886	-2439.187	35.910	16797.460145	-3492571.690661	16-31-57	89-22-33	4.013
W59-41	-97254.691	14.323	-2438.045	-33.705	-34919.843916	3277989.895853	286-43-54	90-11-57	36.388
合計				倍面積	282.226501	-282.226501			80.531
				面積	141.1132508	141.1132508			

面積（座標法）計算書

地番：W59-8

測点名	[1] X(i)	[2] X(i+1)-X(i-1)	[3] Y(i)	[4] Y(i+1)-Y(i-1)	[2]*[3]	[1]*[4]	方向角	夾角	距離
W59-39	-97262.134	2.415	-2440.255	4.889	-5893.037072	-475553.106897	16-31-57	89-22-33	3.750
W59-40	-97258.539	4.775	-2439.187	-2.755	-11647.123431	267965.442094	287-09-24	90-37-27	4.000
W59-70	-97257.359	-2.415	-2443.010	-4.889	5899.690647	475529.760023	196-31-57	89-22-33	3.750
W59-69	-97260.954	-4.775	-2444.077	2.755	11670.470305	-267972.095669	107-09-24	90-37-27	4.000
合計				倍面積	30.000449	-30.000449			15.500
				面積	15.0002246	15.0002246			

面積（座標法）計算書

地 番： W59-9-1

測点名	[1] X(i)	[2] X(i+1)-X(i-1)	[3] Y(i)	[4] Y(i+1)-Y(i-1)	[2]*[3]	[1]*[4]	方向角	夾 角	距 離
W59-73	-97262.788	-1.228	-2492.797	-11.319	3061.486213	1100941.086138	196-33-17	90-00-08	4.402
W59-24	-97267.008	-12.837	-2494.051	27.715	32016.598405	-2695795.094089	106-33-58	90-00-41	30.224
W59-56	-97275.626	14.362	-2465.082	35.775	-35404.693034	-3480003.395170	16-29-43	89-55-45	23.967
W59-55	-97252.645	28.791	-2458.277	-12.019	-70777.447424	1168855.983886	287-09-24	90-39-41	19.700
W59-71	-97246.834	-13.134	-2477.100	-24.455	32535.103609	2378212.893591	196-33-17	89-23-53	19.765
W59-72	-97265.780	-15.954	-2482.732	-15.697	39610.264460	1526747.213413	286-33-09	269-59-52	10.500
合計				倍面積	1041.312229	-1041.312229			108.558
				面 積	520.6561148	520.6561148			

面積（座標法）計算書

地 番： W59-9-2

測点名	[1] X(i)	[2] X(i+1)-X(i-1)	[3] Y(i)	[4] Y(i+1)-Y(i-1)	[2]*[3]	[1]*[4]	方向角	夾 角	距 離
W59-38	-97281.361	13.492	-2445.962	24.827	-33000.684352	-2415202.954678	16-31-57	89-50-02	20.057
W59-39	-97262.134	20.408	-2440.255	1.885	-49799.700797	-183347.185047	287-09-24	90-37-27	4.000
W59-69	-97260.954	4.775	-2444.077	-2.755	-11670.470305	267972.095669	16-31-57	269-22-33	3.750
W59-70	-97257.359	8.308	-2443.010	-14.200	-20297.009043	1381025.928977	287-09-24	90-37-27	15.978
W59-55	-97252.645	-18.267	-2458.277	-22.072	44905.105997	2146540.823323	196-29-43	89-20-19	23.967
W59-56	-97275.626	-28.716	-2465.082	12.315	70786.745527	-1197912.695268	106-41-55	90-12-12	19.961
合計				倍面積	923.987024	-923.987024			87.713
				面 積	461.9935123	461.9935123			

面積（座標法）計算書

地番：W59-9-3

測点名	[1] X(i)	[2] X(i+1)-X(i-1)	[3] Y(i)	[4] Y(i+1)-Y(i-1)	[2]*[3]	[1]*[4]	方向角	夾角	距離
W59-23	-97243.737	-15.954	-2487.134	-15.697	39680.491050	1526401.208020	196-33-17	89-23-53	19.876
W59-73	-97262.788	-22.043	-2492.797	4.402	54949.368803	-428124.803830	106-33-09	89-59-52	10.500
W59-72	-97265.780	15.954	-2482.732	15.697	-39610.264460	-1526747.213413	16-33-17	90-00-08	19.765
W59-71	-97246.834	22.043	-2477.100	-4.402	-54603.363410	428054.577240	287-09-24	90-36-07	10.501
合計				倍面積	416.231982	-416.231982			60.642
				面積	208.1159915	208.1159915			

面積（座標法）計算書

地番：W59-10-1

測点名	[1] X(i)	[2] X(i+1)-X(i-1)	[3] Y(i)	[4] Y(i+1)-Y(i-1)	[2]*[3]	[1]*[4]	方向角	夾角	距離
W59-24	-97267.008	5.648	-2494.051	-29.852	-14086.355595	2903656.458354	196-33-17	89-59-19	3.098
W59-25	-97269.978	-8.483	-2494.934	17.669	21165.204636	-1718617.614925	106-33-09	89-59-52	19.353
W59-58	-97275.491	-8.618	-2476.383	28.973	21342.647166	-2818342.563925	106-35-25	180-02-16	10.874
W59-57	-97278.596	-0.134	-2465.961	11.301	331.390657	-1099360.045178	16-29-43	89-54-18	3.098
W59-56	-97275.626	11.588	-2465.082	-28.090	-28565.743888	2732476.622697	286-33-58	90-04-15	30.224
合計				倍面積	187.142976	-187.142976			66.647
				面積	93.5714881	93.5714881			

面積（座標法）計算書

地番：W59-10-2

測点名	[1] X(i)	[2] X(i+1)-X(i-1)	[3] Y(i)	[4] Y(i+1)-Y(i-1)	[2]*[3]	[1]*[4]	方向角	夾角	距離
W59-37	-97284.295	-2.765	-2446.833	19.999	6765.848108	-1945612.849652	16-31-57	89-56-32	3.060
W59-38	-97281.361	8.669	-2445.962	-18.249	-21205.073854	1775265.030923	286-41-55	90-09-58	19.961
W59-56	-97275.626	2.765	-2465.082	-19.999	-6816.308604	1945439.467740	196-29-43	89-47-48	3.098
W59-57	-97278.596	-8.669	-2465.961	18.249	21378.455766	-1775214.570427	106-35-25	90-05-42	19.959
合計				倍面積	122.921415	-122.921415			46.078
				面積	61.4607080	61.4607080			

面積（座標法）計算書

地番：W59-11

測点名	[1] X(i)	[2] X(i+1)-X(i-1)	[3] Y(i)	[4] Y(i+1)-Y(i-1)	[2]*[3]	[1]*[4]	方向角	夾角	距離
W59-36	-97299.996	6.865	-2451.493	34.208	-16828.448989	-3328393.816928	16-31-57	89-52-59	16.378
W59-37	-97284.295	24.505	-2446.833	-24.889	-59958.444704	2421350.475925	286-35-25	90-03-28	30.833
W59-58	-97275.491	-6.865	-2476.383	-34.208	16999.304231	3327555.577745	196-33-19	89-57-54	16.346
W59-60	-97291.160	-24.505	-2481.040	24.889	60796.683886	-2421521.331167	106-38-58	90-05-39	30.840
合計				倍面積	1009.094424	-1009.094424			94.397
				面積	504.5472124	504.5472124			

面積（座標法）計算書

地番：W59-12

測点名	[1] X(i)	[2] X(i+1)-X(i-1)	[3] Y(i)	[4] Y(i+1)-Y(i-1)	[2]*[3]	[1]*[4]	方向角	夾角	距離
W59-35	-97310.660	1.645	-2454.659	32.630	-4038.518958	-3175258.715881	16-31-57	89-30-48	11.124
W59-36	-97299.996	19.500	-2451.493	-26.382	-47805.001428	2566925.344456	286-38-58	90-07-01	30.840
W59-60	-97291.160	-1.645	-2481.040	-32.630	4081.923124	3174622.416747	196-23-28	89-44-30	10.925
W59-61	-97301.641	-19.500	-2484.123	26.382	48441.300562	-2566968.748623	107-01-09	90-37-41	30.814
合計				倍面積	679.703300	-679.703300			83.703
				面積	339.8516503	339.8516503			

面積（座標法）計算書

地番：W59-13

測点名	[1] X(i)	[2] X(i+1)-X(i-1)	[3] Y(i)	[4] Y(i+1)-Y(i-1)	[2]*[3]	[1]*[4]	方向角	夾角	距離
W59-34	-97333.364	12.073	-2461.398	41.494	-29716.342164	-4038783.501953	16-31-57	89-31-28	23.683
W59-35	-97310.660	33.343	-2454.659	-28.018	-81845.630157	2726434.568961	287-01-09	90-29-12	36.349
W59-62	-97300.021	-12.073	-2489.416	-41.494	30054.600230	4037399.957196	196-31-20	89-30-11	23.690
W59-64	-97322.733	-33.343	-2496.153	28.018	83229.174914	-2726772.827026	107-00-29	90-29-09	36.345
合計				倍面積	1721.802823	-1721.802823			120.067
				面積	860.9014115	860.9014115			

面積（座標法）計算書

地番：W59-14

測点名	[1] X(i)	[2] X(i+1)-X(i-1)	[3] Y(i)	[4] Y(i+1)-Y(i-1)	[2]*[3]	[1]*[4]	方向角	夾角	距離
W59-33	-97336.538	-7.229	-2462.340	35.764	17800.154041	-3481165.548295	16-31-57	89-53-59	3.311
W59-34	-97333.364	13.805	-2461.398	-33.813	-33978.788478	3291133.064062	287-00-29	90-28-32	36.345
W59-64	-97322.733	7.229	-2496.153	-35.764	-18044.586814	3480671.835000	196-31-20	89-30-51	3.549
W59-65	-97326.135	-13.805	-2497.162	33.813	34472.501773	-3290888.631290	106-37-58	90-06-38	36.343
合計				倍面積	249.280522	-249.280522			79.548
				面積	124.6402610	124.6402610			

面積（座標法）計算書

地番：W59-15-1

測点名	[1] X(i)	[2] X(i+1)-X(i-1)	[3] Y(i)	[4] Y(i+1)-Y(i-1)	[2]*[3]	[1]*[4]	方向角	夾角	距離
W59-32	-97343.499	-15.643	-2482.088	9.379	38827.811501	-913011.958227	106-33-17	90-00-00	13.448
W59-5	-97347.330	-1.405	-2469.198	17.265	3470.410799	-1680657.275845	60-59-05	134-25-48	5.002
W59-6	-97344.904	10.793	-2464.824	6.858	-26601.999062	-667560.814708	16-31-57	135-32-52	8.727
W59-33	-97336.538	13.217	-2462.340	-13.754	-32544.738070	1338720.658696	286-37-58	90-06-01	16.946
W59-68	-97331.687	-6.961	-2478.577	-19.748	17253.297029	1922104.607886	196-33-17	89-55-19	12.322
合計				倍面積 面積	404.782198 202.3910993	-404.782198 202.3910993			56.445

面積（座標法）計算書

地番：W59-15-2

測点名	[1] X(i)	[2] X(i+1)-X(i-1)	[3] Y(i)	[4] Y(i+1)-Y(i-1)	[2]*[3]	[1]*[4]	方向角	夾角	距離
W59-31	-97338.824	-16.507	-2497.814	12.208	41232.562911	-1188354.423351	106-33-17	90-00-00	16.406
W59-32	-97343.499	7.137	-2482.088	19.237	-17714.559295	-1872579.875583	16-33-17	90-00-00	12.322
W59-68	-97331.687	16.507	-2478.577	-12.208	-40915.011785	1188267.292279	286-37-58	90-04-41	16.406
W59-67	-97326.991	-7.137	-2494.297	-19.237	17801.690367	1872262.324457	196-33-17	89-55-19	12.345
合計				倍面積	404.682198	-404.682198			57.479
				面積	202.3410991	202.3410991			

面積（座標法）計算書

地番：W59-15-3

測点名	[1] X(i)	[2] X(i+1)-X(i-1)	[3] Y(i)	[4] Y(i+1)-Y(i-1)	[2]*[3]	[1]*[4]	方向角	夾角	距離
W59-30	-97336.890	-13.776	-2504.319	2.985	34498.283534	-290590.934268	106-33-17	90-00-00	6.787
W59-31	-97338.824	9.899	-2497.814	10.023	-24726.217255	-975607.156243	16-33-17	90-00-00	12.345
W59-67	-97326.991	13.776	-2494.297	-2.985	-34360.214378	290561.381225	286-37-58	90-04-41	6.787
W59-66	-97325.048	-9.899	-2500.799	-10.023	24755.770298	975469.087088	196-33-17	89-55-19	12.354
合計				倍面積	167.622198	-167.622198			38.273
				面積	83.8110993	83.8110993			

面積（座標法）計算書

地番：W59-16

測点名	[1] X(i)	[2] X(i+1)-X(i-1)	[3] Y(i)	[4] Y(i+1)-Y(i-1)	[2]*[3]	[1]*[4]	方向角	夾角	距離
W59-66	-97325.048	14.724	-2500.799	-6.128	-36821.594207	596402.446850	286-37-58	90-04-41	10.069
W59-29	-97322.166	-5.580	-2510.447	-12.163	14009.305307	1183776.602866	196-33-17	89-55-19	8.829
W59-3	-97330.629	-12.863	-2512.963	-0.132	32324.880227	12809.460206	151-33-17	135-00-00	5.005
W59-4	-97335.030	-6.261	-2510.579	8.643	15719.613377	-841313.186559	106-33-17	135-00-00	6.530
W59-30	-97336.890	9.981	-2504.319	9.780	-24995.803486	-951911.724581	16-33-17	90-00-00	12.354
合計				倍面積	236.401217	-236.401217			42.787
				面積	118.2006088	118.2006088			

面積（座標法）計算書

地番：W59-17

測点名	[1] X(i)	[2] X(i+1)-X(i-1)	[3] Y(i)	[4] Y(i+1)-Y(i-1)	[2]*[3]	[1]*[4]	方向角	夾角	距離
W59-28	-97313.161	-4.948	-2507.770	-15.930	12409.197131	1550206.493417	196-33-17	89-32-10	9.394
W59-29	-97322.166	-12.974	-2510.447	10.608	32569.708786	-1032413.860946	106-37-58	90-04-41	13.865
W59-65	-97326.135	4.948	-2497.162	15.930	-12356.704546	-1550413.164991	16-31-20	89-53-22	9.301
W59-63	-97317.218	12.974	-2494.517	-10.608	-32363.037212	1032361.368362	287-01-07	90-29-47	13.860
合計				倍面積	259.164158	-259.164158			46.420
				面積	129.5820794	129.5820794			

面積（座標法）計算書

地番：W59-18

測点名	[1] X(i)	[2] X(i+1)-X(i-1)	[3] Y(i)	[4] Y(i+1)-Y(i-1)	[2]*[3]	[1]*[4]	方向角	夾角	距離
W59-27	-97295.967	-13.140	-2502.659	-18.355	32885.822871	1785827.605529	196-33-17	89-32-08	17.938
W59-28	-97313.161	-21.251	-2507.770	8.142	53292.198530	-792352.038611	107-01-07	90-27-50	13.860
W59-63	-97317.218	13.140	-2494.517	18.355	-32778.830317	-1786217.655764	16-31-20	89-30-13	17.938
W59-62	-97300.021	21.251	-2489.416	-8.142	-52902.148294	792245.046057	287-01-09	90-29-49	13.850
合計				倍面積	497.042789	-497.042789			63.586
				面積	248.5213948	248.5213948			

面積（座標法）計算書

地番：W59-19

測点名	[1] X(i)	[2] X(i+1)-X(i-1)	[3] Y(i)	[4] Y(i+1)-Y(i-1)	[2]*[3]	[1]*[4]	方向角	夾角	距離
W59-26	-97283.580	-6.873	-2498.977	-22.233	17175.677012	2162919.895820	196-33-17	90-00-00	12.923
W59-27	-97295.967	-18.061	-2502.659	14.854	45201.088689	-1445221.686794	107-01-09	90-27-52	19.385
W59-61	-97301.641	4.808	-2484.123	21.619	-11942.617624	-2103578.499014	16-23-28	89-22-19	10.925
W59-60	-97291.160	12.547	-2481.040	3.697	-31129.329359	-359691.916062	16-33-19	180-09-51	2.155
W59-59	-97289.094	7.580	-2480.426	-17.937	-18801.236520	1745068.623852	286-33-17	89-59-58	19.353
合計				倍面積	503.582197	-503.582197			64.741
				面積	251.7910987	251.7910987			

面積（座標法）計算書

地番：W59-20

測点名	[1] X(i)	[2] X(i+1)-X(i-1)	[3] Y(i)	[4] Y(i+1)-Y(i-1)	[2]*[3]	[1]*[4]	方向角	夾角	距離
W59-59	-97289.094	8.089	-2480.426	22.595	-20063.020204	-2198204.692060	16-33-19	90-00-02	14.191
W59-58	-97275.491	19.116	-2476.383	-14.508	-47339.693467	1411238.935757	286-33-09	89-59-50	19.353
W59-25	-97269.978	-8.089	-2494.934	-22.595	20180.365882	2197772.763765	196-33-17	90-00-08	14.190
W59-26	-97283.580	-19.116	-2498.977	14.508	47771.621762	-1411356.281435	106-33-17	90-00-00	19.353
合計				倍面積	549.273972	-549.273972			67.087
				面積	274.6369865	274.6369865			

面積（座標法）計算書

地番：W59-21

測点名	[1] X(i)	[2] X(i+1)-X(i-1)	[3] Y(i)	[4] Y(i+1)-Y(i-1)	[2]*[3]	[1]*[4]	方向角	夾角	距離
W59-22	-97226.033	-13.779	-2481.871	-18.464	34198.520612	1795177.798513	196-33-17	90-00-00	18.469
W59-23	-97243.737	-21.772	-2487.134	7.916	54149.692875	-769746.634443	107-09-24	90-36-07	13.792
W59-54	-97247.805	13.779	-2473.956	18.464	-34089.448372	-1795579.794546	16-29-51	89-20-27	18.614
W59-52	-97229.957	21.772	-2468.670	-7.916	-53747.696842	769637.562204	286-33-17	90-03-26	13.772
合計				倍面積	511.068272	-511.068272			64.647
				面積	255.5341365	255.5341365			

面積（座標法）計算書

地番：W59-22

測点名	[1] X(i)	[2] X(i+1)-X(i-1)	[3] Y(i)	[4] Y(i+1)-Y(i-1)	[2]*[3]	[1]*[4]	方向角	夾角	距離
W59-52	-97229.957	3.192	-2468.670	15.309	-7880.495686	-1488508.310722	16-29-51	89-56-34	7.422
W59-51	-97222.841	11.050	-2466.562	-11.083	-27254.781412	1077563.308916	286-36-12	90-06-21	13.765
W59-21	-97218.908	-3.192	-2479.753	-15.309	7915.876272	1488339.149109	196-33-17	89-57-05	7.434
W59-22	-97226.033	-11.050	-2481.871	11.083	27423.943025	-1077598.689503	106-33-17	90-00-00	13.772
合計				倍面積	204.542199	-204.542199			42.393
				面積	102.2710998	102.2710998			