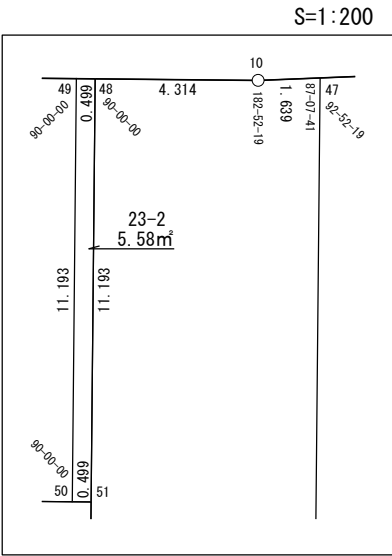
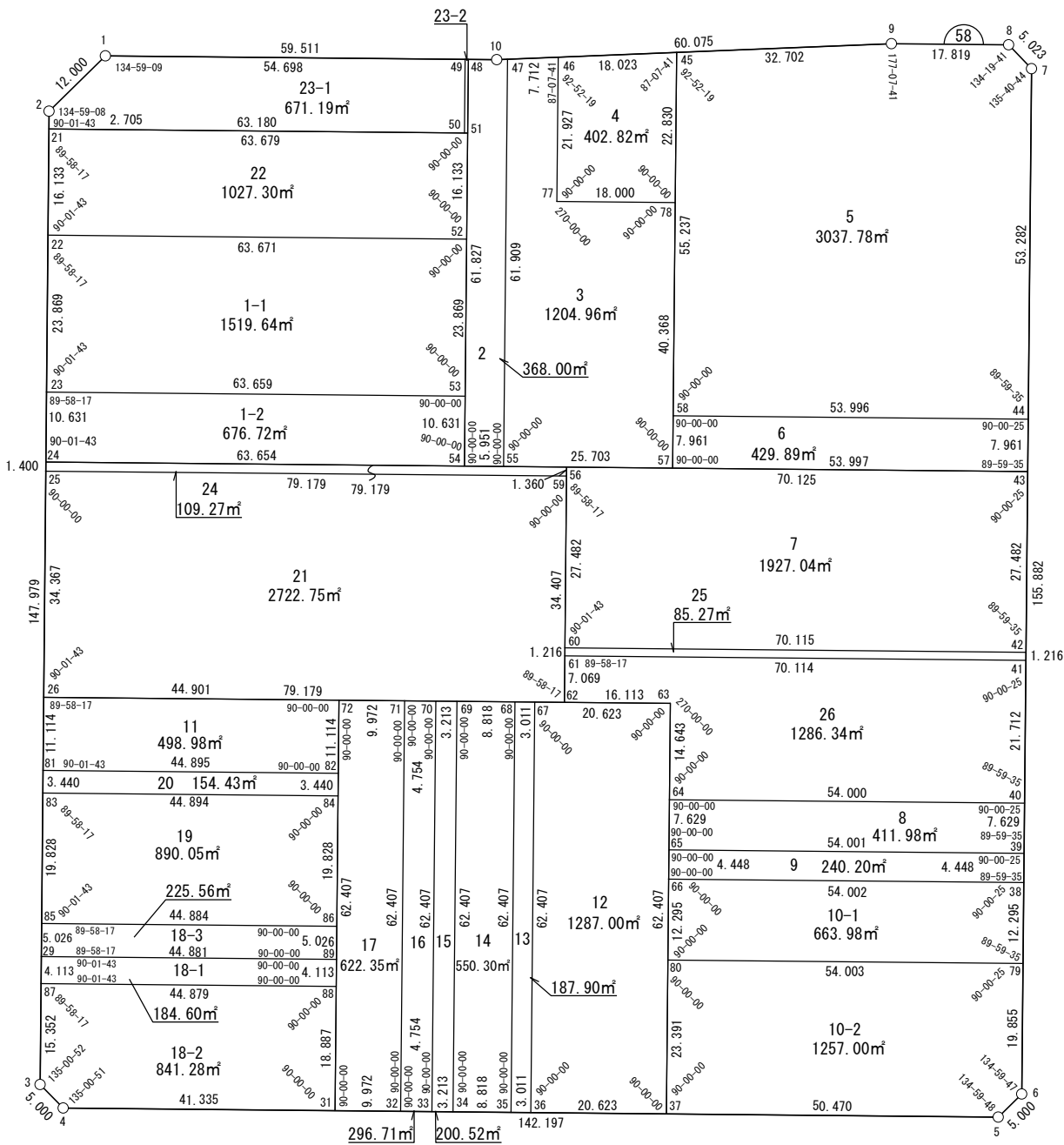


株式会社
オオバ
名古屋支店



面積一覧表

地番名	面積
W58-18-2	841.28 m ²
W58-11	498.98 m ²
W58-20	154.43 m ²
W58-19	890.05 m ²
W58-18-3	225.56 m ²
W58-18-1	184.60 m ²
W58-1-1	1519.64 m ²
W58-1-2	676.72 m ²
W58-2	368.00 m ²
W58-3	1204.96 m ²
W58-4	402.82 m ²
W58-5	3037.78 m ²
W58-6	429.89 m ²
W58-7	1927.04 m ²
W58-8	411.98 m ²
W58-9	240.20 m ²
W58-12	1287.00 m ²
W58-13	187.90 m ²
W58-14	550.30 m ²
W58-15	200.52 m ²
W58-16	296.71 m ²
W58-17	622.35 m ²
W58-21	2722.75 m ²
W58-22	1027.30 m ²
W58-23-1	671.19 m ²
W58-23-2	5.58 m ²
W58-24	109.27 m ²
W58-25	85.27 m ²
W58-26	1286.34 m ²
W58-10-1	663.98 m ²
W58-10-2	1257.00 m ²
合計	23987.39 m ²



座 標 一 覧 表		
測 点 名	X 座 標	Y 座 標
W58-1	-97137.079	-2614.902
W58-2	-97142.798	-2625.452
W58-3	-97284.664	-2667.545
W58-4	-97289.059	-2665.163
W58-5	-97329.576	-2528.860
W58-6	-97327.194	-2524.463
W58-7	-97177.768	-2480.066
W58-8	-97173.324	-2482.406
W58-9	-97168.247	-2499.487
W58-10	-97154.036	-2557.857
W58-21	-97145.392	-2626.222
W58-22	-97160.859	-2630.811
W58-23	-97183.742	-2637.600
W58-24	-97193.933	-2640.624
W58-25	-97195.275	-2641.023
W58-26	-97228.223	-2650.799
W58-29	-97266.002	-2662.008
W58-31	-97300.837	-2625.541
W58-32	-97303.678	-2615.982
W58-33	-97305.033	-2611.424
W58-34	-97305.949	-2608.344
W58-35	-97308.461	-2599.892
W58-36	-97309.319	-2597.006
W58-37	-97315.195	-2577.238
W58-38	-97296.374	-2515.306
W58-39	-97292.111	-2514.039
W58-40	-97284.797	-2511.866
W58-41	-97263.985	-2505.682
W58-42	-97262.819	-2505.336
W58-43	-97236.475	-2497.509
W58-44	-97228.843	-2495.241
W58-45	-97160.511	-2531.260
W58-46	-97156.248	-2548.772
W58-47	-97154.424	-2556.265
W58-48	-97152.807	-2561.993
W58-49	-97152.665	-2562.471
W58-50	-97163.394	-2565.660
W58-51	-97163.536	-2565.182
W58-52	-97179.000	-2569.779
W58-53	-97201.880	-2576.580
W58-54	-97212.070	-2579.609
W58-55	-97213.766	-2573.905
W58-56	-97216.494	-2564.727
W58-57	-97221.090	-2549.268
W58-58	-97213.458	-2546.999
W58-59	-97217.798	-2565.114
W58-60	-97242.841	-2572.545
W58-61	-97244.007	-2572.891
W58-62	-97250.784	-2574.901
W58-63	-97255.375	-2559.456
W58-64	-97269.411	-2563.628
W58-65	-97276.724	-2565.802
W58-66	-97280.988	-2567.070
W58-67	-97249.499	-2579.224
W58-68	-97248.641	-2582.110
W58-69	-97246.129	-2590.562
W58-70	-97245.213	-2593.642
W58-71	-97243.858	-2598.200
W58-72	-97241.017	-2607.759
W58-77	-97177.266	-2555.019
W58-78	-97182.395	-2537.766
W58-79	-97308.161	-2518.808
W58-80	-97292.773	-2570.573
W58-81	-97238.878	-2653.960
W58-82	-97251.670	-2610.926
W58-83	-97242.175	-2654.938
W58-84	-97254.967	-2611.906
W58-85	-97261.184	-2660.579
W58-86	-97273.973	-2617.555
W58-87	-97269.946	-2663.178
W58-88	-97282.733	-2620.159
W58-89	-97278.790	-2618.987

世界測地系

面積（座標法）計算書

地番：W58-1-1

測点名	[1] X(i)	[2] X(i+1)-X(i-1)	[3] Y(i)	[4] Y(i+1)-Y(i-1)	[2]*[3]	[1]*[4]	方向角	夾角	距離
W58-22	-97160.859	-4.741	-2630.811	-67.822	12473.478610	6589597.150176	196-31-34	89-58-17	23.869
W58-23	-97183.742	-41.022	-2637.600	54.231	108199.078399	-5270339.819026	106-33-17	90-01-43	63.659
W58-53	-97201.880	4.741	-2576.580	67.822	-12216.354396	-6592379.309956	16-33-17	90-00-00	23.869
W58-52	-97179.000	41.022	-2569.779	-54.231	-105416.918618	5270082.694812	286-33-17	90-00-00	63.671
合計				倍面積	3039.283995	-3039.283995			175.068
				面積	1519.6419977	1519.6419977			

面積（座標法）計算書

地番：W58-1-2

測点名	[1] X(i)	[2] X(i+1)-X(i-1)	[3] Y(i)	[4] Y(i+1)-Y(i-1)	[2]*[3]	[1]*[4]	方向角	夾角	距離
W58-23	-97183.742	7.947	-2637.600	-64.044	-20960.694851	6224072.848498	196-31-34	89-58-17	10.631
W58-24	-97193.933	-28.329	-2640.624	57.991	74805.460986	-5636405.974302	106-33-17	90-01-43	63.654
W58-54	-97212.070	-7.947	-2579.609	64.044	20499.844663	-6225887.142688	16-33-17	90-00-00	10.631
W58-53	-97201.880	28.329	-2576.580	-57.991	-72991.166796	5636866.824490	286-33-17	90-00-00	63.659
合計				倍面積	1353.444002	-1353.444002			148.575
				面積	676.7220012	676.7220012			

面積（座標法）計算書

地番： W58-2

測点名	[1] X(i)	[2] X(i+1)-X(i-1)	[3] Y(i)	[4] Y(i+1)-Y(i-1)	[2]*[3]	[1]*[4]	方向角	夾角	距離
W58-54	-97212.070	-60.959	-2579.609	-11.912	157251.539082	1157990.329486	106-33-17	90-00-00	5.951
W58-55	-97213.766	57.647	-2573.905	23.344	-148377.503437	-2269374.692829	16-33-17	90-00-00	61.909
W58-47	-97154.424	59.730	-2556.265	16.047	-152686.119647	-1559082.348955	283-40-58	87-07-41	1.639
W58-10	-97154.036	1.617	-2557.857	-5.728	-4135.908693	556477.177367	286-33-17	182-52-19	4.314
W58-48	-97152.807	-58.035	-2561.993	-21.752	148683.996696	2113253.530929	196-33-17	90-00-00	61.827
合計				倍面積	736.004000	-736.004000			135.640
				面積	368.0020002	368.0020002			

面積（座標法）計算書

地 番： W58-3

測点名	[1] X(i)	[2] X(i+1)-X(i-1)	[3] Y(i)	[4] Y(i+1)-Y(i-1)	[2]*[3]	[1]*[4]	方向角	夾 角	距 離
W58-46	-97156.248	22.843	-2548.772	-1.246	-58221.001760	121013.246386	283-40-58	87-07-41	7.712
W58-47	-97154.424	-57.518	-2556.265	-25.133	147031.736909	2441797.052233	196-33-17	92-52-19	61.909
W58-55	-97213.766	-66.666	-2573.905	6.997	171591.886188	-680238.172937	106-33-17	90-00-00	25.703
W58-57	-97221.090	31.371	-2549.268	36.139	-79972.964282	-3513492.032544	16-33-17	90-00-00	40.368
W58-78	-97182.395	43.823	-2537.766	-5.752	-111213.037954	558972.845410	286-33-17	90-00-00	18.000
W58-77	-97177.266	26.147	-2555.019	-11.006	-66806.691487	1069537.133837	16-33-17	270-00-00	21.927
合計				倍面積	2409.927613	-2409.927613			175.619
				面 積	1204.9638067	1204.9638067			

面積（座標法）計算書

地番：W58-4

測点名	[1] X(i)	[2] X(i+1)-X(i-1)	[3] Y(i)	[4] Y(i+1)-Y(i-1)	[2]*[3]	[1]*[4]	方向角	夾角	距離
W58-45	-97160.511	26.147	-2531.260	-11.006	-66185.460134	1069352.724808	283-40-58	87-07-41	18.023
W58-46	-97156.248	-16.755	-2548.772	-23.759	42705.313515	2308332.380335	196-33-17	92-52-19	21.927
W58-77	-97177.266	-26.147	-2555.019	11.006	66806.691487	-1069537.133837	106-33-17	90-00-00	18.000
W58-78	-97182.395	16.755	-2537.766	23.759	-42520.904485	-2308953.611688	16-33-17	90-00-00	22.830
合計				倍面積	805.640382	-805.640382			80.780
				面積	402.8201912	402.8201912			

面積（座標法）計算書

地 番： W58-5

測点名	[1] X(i)	[2] X(i+1)-X(i-1)	[3] Y(i)	[4] Y(i+1)-Y(i-1)	[2]*[3]	[1]*[4]	方向角	夾 角	距 離
W58-44	-97228.843	35.690	-2495.241	66.933	-89055.331337	-6507857.563693	16-32-52	89-59-35	53.282
W58-7	-97177.768	55.520	-2480.066	12.835	-137692.031939	-1247274.263180	332-13-36	135-40-44	5.023
W58-8	-97173.324	9.521	-2482.406	-19.421	-23636.108154	1887206.009635	286-33-17	134-19-41	17.819
W58-9	-97168.247	12.813	-2499.487	-48.854	-32025.303397	4747073.875963	283-40-58	177-07-41	32.702
W58-45	-97160.511	-45.212	-2531.260	-47.512	114442.129481	4616326.680047	196-33-17	92-52-19	55.237
W58-58	-97213.458	-68.332	-2546.999	36.019	174042.209347	-3501550.302773	106-33-17	90-00-00	53.996
合計				倍面積	6075.564000	-6075.564000			218.059
				面 積	3037.7820004	3037.7820004			

面積（座標法）計算書

地番：W58-6

測点名	[1] X(i)	[2] X(i+1)-X(i-1)	[3] Y(i)	[4] Y(i+1)-Y(i-1)	[2]*[3]	[1]*[4]	方向角	夾角	距離
W58-58	-97213.458	7.754	-2546.999	-54.026	-19748.909920	5252090.426042	196-33-17	90-00-00	7.961
W58-57	-97221.090	-23.017	-2549.268	49.490	58676.357423	-4811506.812370	106-33-17	90-00-00	53.997
W58-43	-97236.475	-7.754	-2497.509	54.026	19365.171798	-5253333.948160	16-32-52	89-59-35	7.961
W58-44	-97228.843	23.017	-2495.241	-49.490	-57432.835306	4811890.550492	286-33-17	90-00-25	53.996
合計				倍面積	859.783995	-859.783995			123.915
				面積	429.8919975	429.8919975			

面 積 (座 標 法) 計 算 書

地 番 : W58-7

測点名	[1] X(i)	[2] X(i+1)-X(i-1)	[3] Y(i)	[4] Y(i+1)-Y(i-1)	[2]*[3]	[1]*[4]	方向角	夾 角	距 離
W58-42	-97262.819	6.366	-2505.336	75.036	-15948.464164	-7298194.118468	16-32-52	89-59-35	27.482
W58-43	-97236.475	46.325	-2497.509	-59.391	-115696.401417	5774986.177141	286-33-17	90-00-25	70.125
W58-56	-97216.494	-6.366	-2564.727	-75.036	16326.536252	7294718.105556	196-31-34	89-58-17	27.482
W58-60	-97242.841	-46.325	-2572.545	59.391	119172.414328	-5775364.249229	106-33-17	90-01-43	70.115
合計				倍面積	3854.084999	-3854.084999			195.204
				面 積	1927.0424998	1927.0424998			

面積（座標法）計算書

地番：W58-8

測点名	[1] X(i)	[2] X(i+1)-X(i-1)	[3] Y(i)	[4] Y(i+1)-Y(i-1)	[2]*[3]	[1]*[4]	方向角	夾角	距離
W58-64	-97269.411	8.074	-2563.628	-53.936	-20697.493989	5246303.798593	196-33-17	90-00-00	7.629
W58-65	-97276.724	-22.700	-2565.802	49.589	58242.791682	-4823866.045988	106-33-17	90-00-00	54.001
W58-39	-97292.111	-8.074	-2514.039	53.936	20297.135536	-5247528.122047	16-32-52	89-59-35	7.629
W58-40	-97284.797	22.700	-2511.866	-49.589	-57018.468229	4824266.404441	286-33-17	90-00-25	54.000
合計				倍面積	823.965000	-823.965000			123.259
				面積	411.9825002	411.9825002			

面積（座標法）計算書

地番：W58-9

測点名	[1] X(i)	[2] X(i+1)-X(i-1)	[3] Y(i)	[4] Y(i+1)-Y(i-1)	[2]*[3]	[1]*[4]	方向角	夾角	距離
W58-65	-97276.724	11.123	-2565.802	-53.030	-28539.509888	5158613.609101	196-33-17	90-00-00	4.448
W58-66	-97280.988	-19.651	-2567.070	50.496	50444.313179	-4912303.988927	106-33-17	90-00-00	54.002
W58-38	-97296.374	-11.123	-2515.306	53.030	27977.840687	-5159655.683301	16-32-52	89-59-35	4.448
W58-39	-97292.111	19.651	-2514.039	-50.496	-49402.238980	4912865.658129	286-33-17	90-00-25	54.001
合計				倍面積	480.404998	-480.404998			116.899
				面積	240.2024992	240.2024992			

面積（座標法）計算書

地番：W58-10-1

測点名	[1] X(i)	[2] X(i+1)-X(i-1)	[3] Y(i)	[4] Y(i+1)-Y(i-1)	[2]*[3]	[1]*[4]	方向角	夾角	距離
W58-79	-97308.161	-3.601	-2518.808	55.267	9070.715064	-5377906.895644	16-32-52	89-59-35	12.295
W58-38	-97296.374	27.173	-2515.306	-48.262	-68348.341291	4695672.513545	286-33-17	90-00-25	54.002
W58-66	-97280.988	3.601	-2567.070	-55.267	-9244.514196	5376405.133510	196-33-17	90-00-00	12.295
W58-80	-97292.773	-27.173	-2570.573	48.262	69850.103424	-4695498.714413	106-33-17	90-00-00	54.003
合計				倍面積	1327.963001	-1327.963001			132.595
				面積	663.9815006	663.9815006			

面積（座標法）計算書

地番：W58-10-2

測点名	[1] X(i)	[2] X(i+1)-X(i-1)	[3] Y(i)	[4] Y(i+1)-Y(i-1)	[2]*[3]	[1]*[4]	方向角	夾角	距離
W58-37	-97315.195	-36.802	-2577.238	41.713	94848.606934	-4059330.408714	106-33-17	90-00-00	50.470
W58-5	-97329.576	-11.999	-2528.860	52.775	30342.688413	-5136541.358000	61-33-05	134-59-48	5.000
W58-6	-97327.194	21.415	-2524.463	10.052	-54061.704688	-978298.726409	16-32-52	134-59-47	19.855
W58-79	-97308.161	34.420	-2518.808	-46.110	-86698.371972	4486855.076816	286-33-17	90-00-25	54.003
W58-80	-97292.773	-7.035	-2570.573	-58.430	18082.783313	5684801.414307	196-33-17	90-00-00	23.391
合計				倍面積	2514.002000	-2514.002000			152.719
				面積	1257.0010001	1257.0010001			

面積（座標法）計算書

地番：W58-11

測点名	[1] X(i)	[2] X(i+1)-X(i-1)	[3] Y(i)	[4] Y(i+1)-Y(i-1)	[2]*[3]	[1]*[4]	方向角	夾角	距離
W58-26	-97228.223	2.139	-2650.799	-46.201	-5670.580847	4492046.269353	196-31-34	89-58-17	11.114
W58-81	-97238.878	-23.447	-2653.960	39.873	62226.499663	-3877216.067592	106-33-17	90-01-43	44.895
W58-82	-97251.670	-2.139	-2610.926	46.201	5585.284412	-4493129.529788	16-33-17	90-00-00	11.114
W58-72	-97241.017	23.447	-2607.759	-39.873	-61143.239228	3877301.364027	286-33-17	90-00-00	44.901
合計				倍面積	997.964000	-997.964000			112.024
				面積	498.9820001	498.9820001			

面積（座標法）計算書

地番：W58-12

測点名	[1] X(i)	[2] X(i+1)-X(i-1)	[3] Y(i)	[4] Y(i+1)-Y(i-1)	[2]*[3]	[1]*[4]	方向角	夾角	距離
W58-36	-97309.319	-65.696	-2597.006	1.986	170613.299749	-193267.576014	106-33-17	90-00-00	20.623
W58-37	-97315.195	53.944	-2577.238	37.550	-139026.579643	-3654146.396847	16-33-17	90-00-00	62.407
W58-63	-97255.375	65.696	-2559.456	-1.986	-168146.435424	193160.436936	286-33-17	90-00-00	20.623
W58-67	-97249.499	-53.944	-2579.224	-37.550	139133.718721	3651679.532522	196-33-17	90-00-00	62.407
合計				倍面積	2574.003402	-2574.003402			166.060
				面積	1287.0017015	1287.0017015			

面積（座標法）計算書

地番：W58-13

測点名	[1] X(i)	[2] X(i+1)-X(i-1)	[3] Y(i)	[4] Y(i+1)-Y(i-1)	[2]*[3]	[1]*[4]	方向角	夾角	距離
W58-35	-97308.461	-60.678	-2599.892	-14.896	157756.221133	1449472.019986	106-33-17	90-00-00	3.011
W58-36	-97309.319	58.962	-2597.006	20.668	-153125.138668	-2011173.387582	16-33-17	90-00-00	62.407
W58-67	-97249.499	60.678	-2579.224	14.896	-156502.138075	-1448593.740329	286-33-17	90-00-00	3.011
W58-68	-97248.641	-58.962	-2582.110	-20.668	152246.859011	2009919.304525	196-33-17	90-00-00	62.407
合計				倍面積	375.803400	-375.803400			130.836
				面積	187.9017002	187.9017002			

面積（座標法）計算書

地番：W58-14

測点名	[1] X(i)	[2] X(i+1)-X(i-1)	[3] Y(i)	[4] Y(i+1)-Y(i-1)	[2]*[3]	[1]*[4]	方向角	夾角	距離
W58-34	-97305.949	-62.333	-2608.344	-9.329	162584.891839	907797.953022	106-33-17	90-00-00	8.818
W58-35	-97308.461	57.308	-2599.892	26.234	-148993.500051	-2552806.283497	16-33-17	90-00-00	62.407
W58-68	-97248.641	62.333	-2582.110	9.329	-160949.647942	-907263.312520	286-33-17	90-00-00	8.818
W58-69	-97246.129	-57.308	-2590.562	-26.234	148458.859548	2551171.039599	196-33-17	90-00-00	62.407
合計				倍面積	1100.603394	-1100.603394			142.450
				面積	550.3016975	550.3016975			

面積（座標法）計算書

地番：W58-15

測点名	[1] X(i)	[2] X(i+1)-X(i-1)	[3] Y(i)	[4] Y(i+1)-Y(i-1)	[2]*[3]	[1]*[4]	方向角	夾角	距離
W58-33	-97305.033	-60.736	-2611.424	-14.702	158606.449632	1430559.505251	106-33-17	90-00-00	3.213
W58-34	-97305.949	58.905	-2608.344	20.862	-153643.392110	-2029965.357722	16-33-17	90-00-00	62.407
W58-69	-97246.129	60.736	-2590.562	14.702	-157339.402818	-1429693.501837	286-33-17	90-00-00	3.213
W58-70	-97245.213	-58.905	-2593.642	-20.862	152777.388695	2028698.310908	196-33-17	90-00-00	62.407
合計				倍面積	401.043399	-401.043399			131.240
				面積	200.5216997	200.5216997			

面積（座標法）計算書

地番：W58-16

測点名	[1] X(i)	[2] X(i+1)-X(i-1)	[3] Y(i)	[4] Y(i+1)-Y(i-1)	[2]*[3]	[1]*[4]	方向角	夾角	距離
W58-32	-97303.678	-61.175	-2615.982	-13.224	160032.118786	1286779.067003	106-33-17	90-00-00	4.754
W58-33	-97305.033	58.465	-2611.424	22.339	-152677.942271	-2173708.781625	16-33-17	90-00-00	62.407
W58-70	-97245.213	61.175	-2593.642	13.224	-158665.527852	-1286005.899469	286-33-17	90-00-00	4.754
W58-71	-97243.858	-58.465	-2598.200	-22.339	151904.774737	2172342.190691	196-33-17	90-00-00	62.407
合計				倍面積	593.423400	-593.423400			134.322
				面積	296.7117003	296.7117003			

面積（座標法）計算書

地番：W58-17

測点名	[1] X(i)	[2] X(i+1)-X(i-1)	[3] Y(i)	[4] Y(i+1)-Y(i-1)	[2]*[3]	[1]*[4]	方向角	夾角	距離
W58-31	-97300.837	-62.662	-2625.541	-8.223	164520.483296	800071.252125	106-33-17	90-00-00	9.972
W58-32	-97303.678	56.979	-2615.982	27.341	-149055.013954	-2660362.959569	16-33-17	90-00-00	62.407
W58-71	-97243.858	62.662	-2598.200	8.223	-162807.264351	-799602.736581	286-33-17	90-00-00	9.972
W58-72	-97241.017	-56.979	-2607.759	-27.341	148586.498410	2658649.740624	196-33-17	90-00-00	62.407
合計				倍面積	1244.703400	-1244.703400			144.758
				面積	622.3517001	622.3517001			

面積（座標法）計算書

地番：W58-18-1

測点名	[1] X(i)	[2] X(i+1)-X(i-1)	[3] Y(i)	[4] Y(i+1)-Y(i-1)	[2]*[3]	[1]*[4]	方向角	夾角	距離
W58-29	-97266.002	8.845	-2662.008	-44.191	-23544.952691	4298276.709705	196-31-34	89-58-17	4.113
W58-87	-97269.946	-16.731	-2663.178	41.849	44557.256725	-4070642.834158	106-33-17	90-01-43	44.879
W58-88	-97282.733	-8.845	-2620.159	44.191	23174.806943	-4299016.062166	16-33-17	90-00-00	4.113
W58-89	-97278.790	16.731	-2618.987	-41.849	-43817.904264	4071012.979906	286-33-17	90-00-00	44.881
合計				倍面積	369.206713	-369.206713			97.986
				面積	184.6033570	184.6033570			

面積（座標法）計算書

地番：W58-18-2

測点名	[1] X(i)	[2] X(i+1)-X(i-1)	[3] Y(i)	[4] Y(i+1)-Y(i-1)	[2]*[3]	[1]*[4]	方向角	夾角	距離
W58-87	-97269.946	-1.930	-2663.178	-47.386	5140.879506	4609226.474719	196-31-34	89-58-17	15.352
W58-3	-97284.664	-19.113	-2667.545	-1.984	50986.061892	193050.561246	151-32-26	135-00-52	5.000
W58-4	-97289.059	-16.173	-2665.163	42.005	43104.606098	-4086581.583182	106-33-17	135-00-51	41.335
W58-31	-97300.837	6.326	-2625.541	45.003	-16608.999250	-4378862.955376	16-33-17	90-00-00	18.887
W58-88	-97282.733	30.891	-2620.159	-37.638	-80939.984134	3661484.938479	286-33-17	90-00-00	44.879
合計				倍面積 面積	1682.564112 841.2820563	-1682.564112 841.2820563			125.453

面積（座標法）計算書

地番：W58-18-3

測点名	[1] X(i)	[2] X(i+1)-X(i-1)	[3] Y(i)	[4] Y(i+1)-Y(i-1)	[2]*[3]	[1]*[4]	方向角	夾角	距離
W58-85	-97261.184	7.971	-2660.579	-44.453	-21206.745687	4323542.453558	196-31-34	89-58-17	5.026
W58-29	-97266.002	-17.606	-2662.008	41.591	46867.945797	-4045422.272131	106-33-17	90-01-43	44.881
W58-89	-97278.790	-7.971	-2618.987	44.453	20875.232557	-4324325.101975	16-33-17	90-00-00	5.026
W58-86	-97273.973	17.606	-2617.555	-41.591	-46085.297380	4045753.785261	286-33-17	90-00-00	44.884
合計				倍面積	451.135286	-451.135286			99.817
				面積	225.5676433	225.5676433			

面積（座標法）計算書

地番：W58-19

測点名	[1] X(i)	[2] X(i+1)-X(i-1)	[3] Y(i)	[4] Y(i+1)-Y(i-1)	[2]*[3]	[1]*[4]	方向角	夾角	距離
W58-83	-97242.175	-6.217	-2654.938	-48.673	16506.297214	4733061.972357	196-31-34	89-58-17	19.828
W58-85	-97261.184	-31.798	-2660.579	37.383	84600.269344	-3635931.206258	106-33-17	90-01-43	44.884
W58-86	-97273.973	6.217	-2617.555	48.673	-16273.878383	-4734609.659526	16-33-17	90-00-00	19.828
W58-84	-97254.967	31.798	-2611.906	-37.383	-83052.582175	3635698.787427	286-33-17	90-00-00	44.894
合計				倍面積	1780.105999	-1780.105999			129.434
				面積	890.0530000	890.0530000			

面積（座標法）計算書

地番：W58-20

測点名	[1] X(i)	[2] X(i+1)-X(i-1)	[3] Y(i)	[4] Y(i+1)-Y(i-1)	[2]*[3]	[1]*[4]	方向角	夾角	距離
W58-81	-97238.878	9.494	-2653.960	-44.013	-25197.715192	4279765.892605	196-31-34	89-58-17	3.440
W58-83	-97242.175	-16.089	-2654.938	42.054	42716.389832	-4089451.749864	106-33-17	90-01-43	44.894
W58-84	-97254.967	-9.494	-2611.906	44.013	24798.435499	-4280474.034298	16-33-17	90-00-00	3.440
W58-82	-97251.670	16.089	-2610.926	-42.054	-42008.248140	4089851.029556	286-33-17	90-00-00	44.895
合計				倍面積	308.861999	-308.861999			96.669
				面積	154.4310000	154.4310000			

面積（座標法）計算書

地番：W58-21

測点名	[1] X(i)	[2] X(i+1)-X(i-1)	[3] Y(i)	[4] Y(i+1)-Y(i-1)	[2]*[3]	[1]*[4]	方向角	夾角	距離
W58-25	-97195.275	-10.425	-2641.023	-85.684	27532.036300	8328121.714798	196-31-34	90-00-00	34.367
W58-26	-97228.223	-55.508	-2650.799	66.121	147141.654935	-6428854.943408	106-33-17	90-01-43	79.179
W58-62	-97250.784	10.425	-2574.901	85.684	-26842.737560	-8332877.922478	16-31-34	89-58-17	34.407
W58-59	-97217.798	55.508	-2565.114	-66.121	-142385.447255	6428165.644667	286-31-34	90-00-00	79.179
合計				倍面積	5445.506420	-5445.506420			227.132
				面積	2722.7532103	2722.7532103			

面積（座標法）計算書

地番：W58-22

測点名	[1] X(i)	[2] X(i+1)-X(i-1)	[3] Y(i)	[4] Y(i+1)-Y(i-1)	[2]*[3]	[1]*[4]	方向角	夾角	距離
W58-21	-97145.392	2.677	-2626.222	-65.629	-7030.954668	6375529.973785	196-31-34	89-58-17	16.133
W58-22	-97160.859	-33.609	-2630.811	56.443	88418.771213	-5484007.024781	106-33-17	90-01-43	63.671
W58-52	-97179.000	-2.677	-2569.779	65.629	6879.845923	-6377735.686534	16-33-17	90-00-00	16.133
W58-51	-97163.536	33.609	-2565.182	-56.443	-86213.058464	5484158.133527	286-33-17	90-00-00	63.679
合計				倍面積	2054.604003	-2054.604003			159.616
				面積	1027.3020015	1027.3020015			

面積（座標法）計算書

地 番： W58-23-1

測点名	[1] X(i)	[2] X(i+1)-X(i-1)	[3] Y(i)	[4] Y(i+1)-Y(i-1)	[2]*[3]	[1]*[4]	方向角	夾 角	距 離
W58-49	-97152.665	26.314	-2562.471	-49.242	-67429.785989	4783961.917521	286-33-17	90-00-00	54.698
W58-1	-97137.079	9.867	-2614.902	-62.981	-25800.303608	6117807.905416	241-32-26	134-59-09	12.000
W58-2	-97142.798	-8.312	-2625.452	-11.320	21823.374875	1099634.644877	196-31-34	134-59-08	2.705
W58-21	-97145.392	-20.596	-2626.222	59.792	54088.896389	-5808509.926119	106-33-17	90-01-43	63.180
W58-50	-97163.394	-7.273	-2565.660	63.751	18660.202333	-6194236.925696	16-33-17	90-00-00	11.193
合計				倍面積	1342.384000	-1342.384000			143.776
				面 積	671.1920002	671.1920002			

面積（座標法）計算書

地番：W58-23-2

測点名	[1] X(i)	[2] X(i+1)-X(i-1)	[3] Y(i)	[4] Y(i+1)-Y(i-1)	[2]*[3]	[1]*[4]	方向角	夾角	距離
W58-50	-97163.394	-10.871	-2565.660	-2.711	27891.707364	263431.860857	106-33-17	90-00-00	0.499
W58-51	-97163.536	10.587	-2565.182	3.667	-27157.504870	-356326.474411	16-33-17	90-00-00	11.193
W58-48	-97152.807	10.871	-2561.993	2.711	-27851.839702	-263403.157195	286-33-17	90-00-00	0.499
W58-49	-97152.665	-10.587	-2562.471	-3.667	27128.801209	356286.606749	196-33-17	90-00-00	11.193
合計				倍面積	11.164000	-11.164000			23.384
				面積	5.5820002	5.5820002			

面積（座標法）計算書

地番：W58-24

測点名	[1] X(i)	[2] X(i+1)-X(i-1)	[3] Y(i)	[4] Y(i+1)-Y(i-1)	[2]*[3]	[1]*[4]	方向角	夾角	距離
W58-59	-97217.798	-21.219	-2565.114	76.295	54428.585941	-7417272.960555	16-31-34	90-00-00	1.360
W58-56	-97216.494	23.865	-2564.727	-75.510	-61206.943782	7340845.504383	286-33-17	90-01-43	79.179
W58-24	-97193.933	21.219	-2640.624	-76.295	-56030.821909	7415452.178386	196-31-34	89-58-17	1.400
W58-25	-97195.275	-23.865	-2641.023	75.510	63027.725951	-7339243.268414	106-31-34	90-00-00	79.179
合計				倍面積	218.546200	-218.546200			161.118
				面積	109.2731000	109.2731000			

面積（座標法）計算書

地番：W58-25

測点名	[1] X(i)	[2] X(i+1)-X(i-1)	[3] Y(i)	[4] Y(i+1)-Y(i-1)	[2]*[3]	[1]*[4]	方向角	夾角	距離
W58-41	-97263.985	-18.812	-2505.682	67.554	47137.017355	-6570618.144866	16-32-52	89-59-35	1.216
W58-42	-97262.819	21.144	-2505.336	-66.862	-52972.339806	6503200.798987	286-33-17	90-00-25	70.115
W58-60	-97242.841	18.812	-2572.545	-67.554	-48394.831215	6569189.786003	196-31-34	89-58-17	1.216
W58-61	-97244.007	-21.144	-2572.891	66.862	54400.698670	-6501942.985127	106-33-17	90-01-43	70.114
合計				倍面積	170.545003	-170.545003			142.661
				面積	85.2725019	85.2725019			

面積（座標法）計算書

地 番： W58-26

測点名	[1] X(i)	[2] X(i+1)-X(i-1)	[3] Y(i)	[4] Y(i+1)-Y(i-1)	[2]*[3]	[1]*[4]	方向角	夾 角	距 離
W58-61	-97244.007	13.201	-2572.891	-69.219	-33964.442219	6731123.391512	196-31-34	89-58-17	7.069
W58-62	-97250.784	-11.368	-2574.901	13.434	29271.825355	-1306511.678011	106-33-17	90-01-43	16.113
W58-63	-97255.375	-18.627	-2559.456	11.273	47675.349222	-1096361.777835	196-33-17	270-00-00	14.643
W58-64	-97269.411	-29.422	-2563.628	47.590	75428.162858	-4629028.099250	106-33-17	90-00-00	54.000
W58-40	-97284.797	5.426	-2511.866	57.946	-13630.019763	-5637253.411845	16-32-52	89-59-35	21.712
W58-41	-97263.985	40.791	-2505.682	-61.024	-102208.190045	5935458.890021	286-33-17	90-00-25	70.114
合計				倍面積	2572.685408	-2572.685408			183.651
				面 積	1286.3427043	1286.3427043			