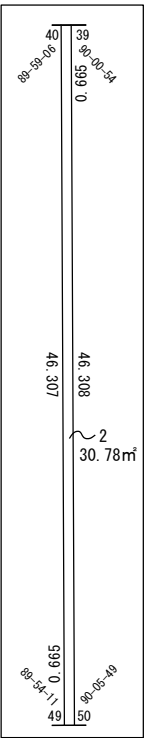
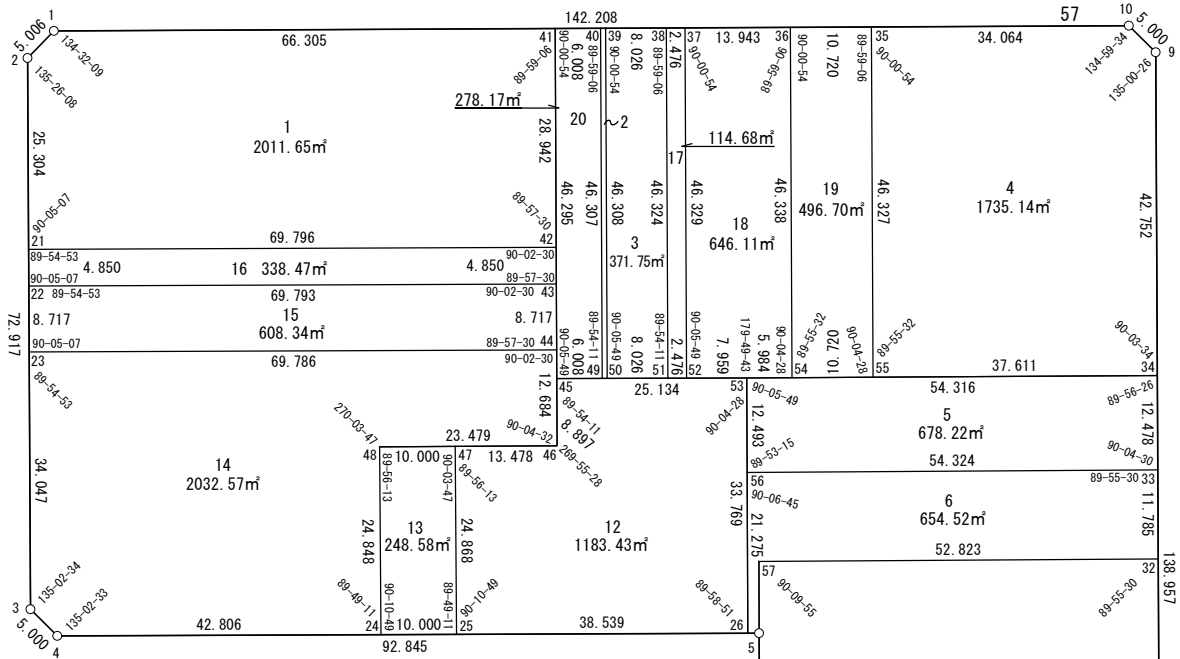


面積一覧表

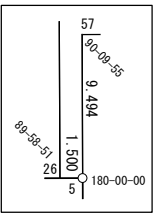
地番名	地積
W57-1	2011.65㎡
W57-2	30.78㎡
W57-3	371.75㎡
W57-4	1735.14㎡
W57-5	678.22㎡
W57-6	654.52㎡
W57-8-1	2460.73㎡
W57-8-2	250.96㎡
W57-10-2	502.37㎡
W57-11-1	700.69㎡
W57-12	1183.43㎡
W57-13	248.58㎡
W57-14	2032.57㎡
W57-15	608.34㎡
W57-16	338.47㎡
W57-17	114.68㎡
W57-18	646.11㎡
W57-19	496.70㎡
W57-20	278.17㎡
合計	15343.86㎡



座 標 一 覧 表

測 点 名	X	座 標	Y	座 標
W57-1		-97300.559		-2668.591
W57-2		-97302.979		-2672.973
W57-3		-97372.884		-2693.715
W57-4		-97377.281		-2691.334
W57-5		-97403.824		-2602.364
W57-6		-97465.696		-2620.862
W57-7		-97480.111		-2572.134
W57-8		-97478.672		-2569.490
W57-9		-97345.475		-2529.897
W57-10		-97341.079		-2532.278
W57-21		-97327.238		-2680.171
W57-22		-97331.887		-2681.551
W57-23		-97340.244		-2684.030
W57-24		-97389.519		-2650.315
W57-25		-97392.378		-2640.732
W57-26		-97403.395		-2603.802
W57-28		-97467.983		-2566.313
W57-29		-97452.971		-2617.058
W57-32		-97409.712		-2548.992
W57-33		-97398.416		-2545.634
W57-34		-97386.455		-2542.078
W57-35		-97331.373		-2564.930
W57-36		-97328.318		-2575.206
W57-37		-97324.345		-2588.571

測 点 名	X	座 標	Y	座 標
W57-38		-97323.640		-2590.944
W57-39		-97321.353		-2598.638
W57-40		-97321.163		-2599.275
W57-41		-97319.451		-2605.034
W57-42		-97347.191		-2613.288
W57-43		-97351.839		-2614.671
W57-44		-97360.194		-2617.157
W57-45		-97363.824		-2618.237
W57-46		-97372.352		-2620.774
W57-47		-97368.525		-2633.698
W57-48		-97365.686		-2643.286
W57-49		-97365.547		-2612.481
W57-50		-97365.738		-2611.844
W57-51		-97368.040		-2604.155
W57-52		-97368.750		-2601.783
W57-53		-97371.033		-2594.159
W57-54		-97372.732		-2588.421
W57-55		-97375.776		-2578.141
W57-56		-97383.005		-2597.726
W57-57		-97394.728		-2599.645
W57-61		-97443.874		-2614.338
W57-68		-97458.882		-2563.608
W57-71		-97439.329		-2612.979
W57-72		-97454.335		-2562.256



面積（座標法）計算書

地 番： W57-1

測点名	[1] X(i)	[2] X(i+1)-X(i-1)	[3] Y(i)	[4] Y(i+1)-Y(i-1)	[2]*[3]	[1]*[4]	方向角	夾 角	距 離
W57-42	-97347.191	7.786	-2613.288	75.137	-20348.024661	-7314381.058031	16-34-11	89-57-30	28.942
W57-41	-97319.451	46.632	-2605.034	-55.303	-121478.542121	5382071.211386	286-33-17	89-59-06	66.305
W57-1	-97300.559	16.472	-2668.591	-67.939	-43957.725843	6610525.476481	241-05-26	134-32-09	5.006
W57-2	-97302.979	-26.679	-2672.973	-11.580	71311.832340	1126799.529355	196-31-34	135-26-08	25.304
W57-21	-97327.238	-44.212	-2680.171	59.686	118495.772281	-5809038.471188	106-36-41	90-05-07	69.796
合計				倍面積	4023.311995	-4023.311995			195.353
				面 積	2011.6559979	2011.6559979			

面積（座標法）計算書

地番：W57-2

測点名	[1] X(i)	[2] X(i+1)-X(i-1)	[3] Y(i)	[4] Y(i+1)-Y(i-1)	[2]*[3]	[1]*[4]	方向角	夾角	距離
W57-49	-97365.547	-44.575	-2612.481	-12.569	116450.282732	1223789.978802	106-40-00	90-05-49	0.665
W57-50	-97365.738	44.195	-2611.844	13.843	-115429.235588	-1347838.438118	16-34-11	89-54-11	46.308
W57-39	-97321.353	44.575	-2598.638	12.569	-115833.234539	-1223234.496611	286-33-17	89-59-06	0.665
W57-40	-97321.163	-44.195	-2599.275	-13.843	114873.753397	1347221.389926	196-34-11	90-00-54	46.307
合計				倍面積	61.566001	-61.566001			93.945
				面積	30.7830007	30.7830007			

面積（座標法）計算書

地番：W57-3

測点名	[1] X(i)	[2] X(i+1)-X(i-1)	[3] Y(i)	[4] Y(i+1)-Y(i-1)	[2]*[3]	[1]*[4]	方向角	夾角	距離
W57-50	-97365.738	-46.687	-2611.844	-5.517	121939.674562	537162.803815	106-40-00	90-05-49	8.026
W57-51	-97368.040	42.098	-2604.155	20.900	-109630.226487	-2034987.215646	16-34-11	89-54-11	46.324
W57-38	-97323.640	46.687	-2590.944	5.517	-120963.914527	-536930.549780	286-33-17	89-59-06	8.026
W57-39	-97321.353	-42.098	-2598.638	-20.900	109397.972451	2034011.455611	196-34-11	90-00-54	46.308
合計				倍面積	743.505999	-743.505999			108.684
				面積	371.7530000	371.7530000			

面積（座標法）計算書

地番：W57-4

測点名	[1] X(i)	[2] X(i+1)-X(i-1)	[3] Y(i)	[4] Y(i+1)-Y(i-1)	[2]*[3]	[1]*[4]	方向角	夾角	距離
W57-55	-97375.776	-55.082	-2578.141	22.852	142009.955670	-2225192.724547	106-29-43	89-55-32	37.611
W57-34	-97386.455	30.301	-2542.078	48.245	-77026.564633	-4698367.017867	16-33-17	90-03-34	42.752
W57-9	-97345.475	45.376	-2529.897	9.800	-114797.518658	-954027.076493	331-33-43	135-00-26	5.000
W57-10	-97341.079	14.102	-2532.278	-35.033	-35711.411772	3410150.929627	286-33-17	134-59-34	34.064
W57-35	-97331.373	-34.697	-2564.930	-45.864	88995.825398	4463965.603275	196-34-11	90-00-54	46.327
合計				倍面積	3470.286004	-3470.286004			165.754
				面積	1735.1430025	1735.1430025			

面積（座標法）計算書

地番：W57-5

測点名	[1] X(i)	[2] X(i+1)-X(i-1)	[3] Y(i)	[4] Y(i+1)-Y(i-1)	[2]*[3]	[1]*[4]	方向角	夾角	距離
W57-33	-97398.416	-3.449	-2545.634	55.648	8780.949297	-5420031.938449	16-33-17	90-04-30	12.478
W57-34	-97386.455	27.383	-2542.078	-48.525	-69610.559096	4725684.580698	286-29-43	89-56-26	54.316
W57-53	-97371.033	3.449	-2594.159	-55.648	-8948.332441	5418508.109744	196-35-32	90-05-49	12.493
W57-56	-97383.005	-27.383	-2597.726	48.525	71134.387801	-4725517.197554	106-28-47	89-53-15	54.324
合計				倍面積	1356.445560	-1356.445560			133.611
				面積	678.2227805	678.2227805			

面積（座標法）計算書

地番：W57-6

測点名	[1] X(i)	[2] X(i+1)-X(i-1)	[3] Y(i)	[4] Y(i+1)-Y(i-1)	[2]*[3]	[1]*[4]	方向角	夾角	距離
W57-56	-97383.005	-4.979	-2597.726	-58.168	12934.552809	5664576.231674	196-35-32	90-06-45	21.275
W57-26	-97403.395	-20.818	-2603.802	-4.638	54207.046428	451759.089353	106-36-41	90-01-09	1.500
W57-5	-97403.824	8.668	-2602.364	4.157	-22556.141542	-404902.494674	16-38-42	90-02-01	9.494
W57-57	-97394.728	-5.888	-2599.645	53.373	15307.324325	-5198226.207368	106-28-47	269-50-05	52.823
W57-32	-97409.712	-3.688	-2548.992	54.011	9401.636402	-5261202.733324	16-33-17	90-04-30	11.785
W57-33	-97398.416	26.707	-2545.634	-48.735	-67985.374428	4746687.070344	286-28-47	89-55-30	54.324
合計				倍面積	1309.043996	-1309.043996			151.201
				面積	654.5219980	654.5219980			

面積（座標法）計算書

地番：W57-8-1

測点名	[1] X(i)	[2] X(i+1)-X(i-1)	[3] Y(i)	[4] Y(i+1)-Y(i-1)	[2]*[3]	[1]*[4]	方向角	夾角	距離
W57-32	-97409.712	59.607	-2548.992	-37.389	-151937.875710	3642054.676598	286-28-47	89-55-30	52.823
W57-57	-97394.728	-29.617	-2599.645	-63.988	76993.692573	6232073.212241	196-38-42	90-09-55	46.552
W57-71	-97439.329	-59.607	-2612.979	37.389	155751.999151	-3643162.027677	106-28-47	89-50-05	52.897
W57-72	-97454.335	29.617	-2562.256	63.988	-75886.341494	-6235887.335682	16-33-17	90-04-30	46.552
合計				倍面積	4921.474520	-4921.474520			198.824
				面積	2460.7372600	2460.7372600			

面積（座標法）計算書

地番：W57-8-2

測点名	[1] X(i)	[2] X(i+1)-X(i-1)	[3] Y(i)	[4] Y(i+1)-Y(i-1)	[2]*[3]	[1]*[4]	方向角	夾角	距離
W57-71	-97439.329	10.460	-2612.979	-52.082	-27332.210164	5074883.739910	196-38-42	90-09-55	4.744
W57-61	-97443.874	-19.553	-2614.338	49.372	51117.683774	-4810986.447872	106-28-47	89-50-05	52.904
W57-68	-97458.882	-10.460	-2563.608	52.082	26815.771967	-5075902.099588	16-33-17	90-04-30	4.744
W57-72	-97454.335	19.553	-2562.256	-49.372	-50099.324096	4811502.886070	286-28-47	89-55-30	52.897
合計				倍面積	501.921479	-501.921479			115.289
				面積	250.9607400	250.9607400			

面積（座標法）計算書

地番：W57-10-2

測点名	[1] X(i)	[2] X(i+1)-X(i-1)	[3] Y(i)	[4] Y(i+1)-Y(i-1)	[2]*[3]	[1]*[4]	方向角	夾角	距離
W57-61	-97443.874	5.911	-2614.338	-53.450	-15452.587800	5208419.986833	196-38-42	90-09-55	9.495
W57-29	-97452.971	-24.109	-2617.058	48.025	63093.736936	-4680221.452960	106-28-47	89-50-05	52.919
W57-28	-97467.983	-5.911	-2566.313	53.450	15168.723516	-5209708.605325	16-33-17	90-04-30	9.495
W57-68	-97458.882	24.109	-2563.608	-48.025	-61805.118444	4680505.317245	286-28-47	89-55-30	52.904
合計				倍面積	1004.754207	-1004.754207			124.813
				面積	502.3771035	502.3771035			

面積（座標法）計算書

地番：W57-11-1

測点名	[1] X(i)	[2] X(i+1)-X(i-1)	[3] Y(i)	[4] Y(i+1)-Y(i-1)	[2]*[3]	[1]*[4]	方向角	夾角	距離
W57-29	-97452.971	2.287	-2617.058	-54.549	-5985.847028	5316000.507021	196-38-42	90-09-55	13.281
W57-6	-97465.696	-27.140	-2620.862	44.924	71129.081076	-4378500.488924	106-28-47	89-50-05	50.815
W57-7	-97480.111	-12.977	-2572.134	51.372	33377.506019	-5007743.185456	61-27-14	134-58-27	3.010
W57-8	-97478.672	12.128	-2569.490	5.822	-31162.188441	-567484.042334	16-33-17	135-06-03	11.152
W57-28	-97467.983	25.701	-2566.313	-47.568	-65957.161409	4636325.819476	286-28-47	89-55-30	52.919
合計				倍面積	1401.390216	-1401.390216			131.177
				面積	700.6951082	700.6951082			

面積（座標法）計算書

地 番： W57-12

測点名	[1] X(i)	[2] X(i+1)-X(i-1)	[3] Y(i)	[4] Y(i+1)-Y(i-1)	[2]*[3]	[1]*[4]	方向角	夾 角	距 離
W57-25	-97392.378	-34.870	-2640.732	29.896	92082.709325	-2911636.240771	106-36-41	90-10-49	38.539
W57-26	-97403.395	21.345	-2603.802	46.573	-55578.328997	-4536391.901400	16-35-32	89-58-51	33.769
W57-53	-97371.033	39.571	-2594.159	-14.435	-102653.232429	1405538.206978	286-40-00	90-04-28	25.134
W57-45	-97363.824	-1.319	-2618.237	-26.615	3453.809686	2591345.161757	196-34-11	89-54-11	8.897
W57-46	-97372.352	-4.701	-2620.774	-15.461	12319.650073	1505480.298226	286-29-39	269-55-28	13.478
W57-47	-97368.525	-20.026	-2633.698	-19.958	52742.254878	1943297.612674	196-25-52	89-56-13	24.868
合計				倍面積	2366.862535	-2366.862535			144.685
				面 積	1183.4312679	1183.4312679			

面積（座標法）計算書

地番：W57-13

測点名	[1] X(i)	[2] X(i+1)-X(i-1)	[3] Y(i)	[4] Y(i+1)-Y(i-1)	[2]*[3]	[1]*[4]	方向角	夾角	距離
W57-47	-97368.525	26.692	-2633.698	-2.554	-70298.401358	248698.569601	286-29-39	90-03-47	10.000
W57-48	-97365.686	-20.994	-2643.286	-16.617	55492.813808	1617938.199390	196-25-52	89-56-13	24.848
W57-24	-97389.519	-26.692	-2650.315	2.554	70741.944150	-248752.192124	106-36-41	90-10-49	10.000
W57-25	-97392.378	20.994	-2640.732	16.617	-55439.191285	-1618381.742181	16-25-52	89-49-11	24.868
合計				倍面積	497.165314	-497.165314			69.716
				面積	248.5826570	248.5826570			

面 積 (座 標 法) 計 算 書

地 番 : W57-14

測点名	[1] X(i)	[2] X(i+1)-X(i-1)	[3] Y(i)	[4] Y(i+1)-Y(i-1)	[2]*[3]	[1]*[4]	方向角	夾 角	距 離
W57-23	-97340.244	-12.690	-2684.030	-76.558	34060.518980	7452215.582485	196-31-34	89-54-53	34.047
W57-3	-97372.884	-37.038	-2693.715	-7.304	99768.671877	711235.452357	151-34-08	135-02-34	5.000
W57-4	-97377.281	-16.634	-2691.334	43.400	44768.936897	-4226193.469487	106-36-41	135-02-33	42.806
W57-24	-97389.519	11.596	-2650.315	48.048	-30732.142846	-4679390.591623	16-25-52	89-49-11	24.848
W57-48	-97365.686	17.167	-2643.286	29.541	-45377.559406	-2876273.773986	106-29-39	270-03-47	23.479
W57-46	-97372.352	5.491	-2620.774	26.130	-14391.907001	-2544305.830620	16-34-11	90-04-32	12.684
W57-44	-97360.194	32.108	-2617.157	-63.256	-84031.366177	6158647.478550	286-36-41	90-02-30	69.786
合計				倍面積	4065.152324	-4065.152324			212.650
				面 積	2032.5761623	2032.5761623			

面積（座標法）計算書

地番：W57-15

測点名	[1] X(i)	[2] X(i+1)-X(i-1)	[3] Y(i)	[4] Y(i+1)-Y(i-1)	[2]*[3]	[1]*[4]	方向角	夾角	距離
W57-44	-97360.194	-11.596	-2617.157	69.359	30347.449664	-6752852.633471	16-34-11	89-57-30	8.717
W57-43	-97351.839	28.307	-2614.671	-64.394	-74014.004798	6268879.877376	286-36-41	90-02-30	69.793
W57-22	-97331.887	11.596	-2681.551	-69.359	-31094.136121	6750889.260814	196-31-34	89-54-53	8.717
W57-23	-97340.244	-28.307	-2684.030	64.394	75977.377454	-6268133.190919	106-36-41	90-05-07	69.786
合計				倍面積	1216.686200	-1216.686200			157.013
				面積	608.3431001	608.3431001			

面積（座標法）計算書

地番：W57-16

測点名	[1] X(i)	[2] X(i+1)-X(i-1)	[3] Y(i)	[4] Y(i+1)-Y(i-1)	[2]*[3]	[1]*[4]	方向角	夾角	距離
W57-43	-97351.839	-15.304	-2614.671	68.263	40015.322532	-6645522.744202	16-34-11	89-57-30	4.850
W57-42	-97347.191	24.602	-2613.288	-65.500	-64290.970310	6376285.251193	286-36-41	90-02-30	69.796
W57-21	-97327.238	15.304	-2680.171	-68.263	-41017.751546	6643843.368993	196-31-34	89-54-53	4.850
W57-22	-97331.887	-24.602	-2681.551	65.500	65970.345519	-6375282.822179	106-36-41	90-05-07	69.793
合計				倍面積	676.946196	-676.946196			149.289
				面積	338.4730980	338.4730980			

面積（座標法）計算書

地番：W57-17

測点名	[1] X(i)	[2] X(i+1)-X(i-1)	[3] Y(i)	[4] Y(i+1)-Y(i-1)	[2]*[3]	[1]*[4]	方向角	夾角	距離
W57-51	-97368.040	-45.110	-2604.155	-10.839	117473.946289	1055385.300705	106-40-00	90-05-49	2.476
W57-52	-97368.750	43.695	-2601.783	15.584	-113684.511154	-1517357.755108	16-34-11	89-54-11	46.329
W57-37	-97324.345	45.110	-2588.571	10.839	-116770.966017	-1054911.686433	286-33-17	89-59-06	2.476
W57-38	-97323.640	-43.695	-2590.944	-15.584	113210.896882	1516654.774837	196-34-11	90-00-54	46.324
合計				倍面積	229.365999	-229.365999			97.605
				面積	114.6829999	114.6829999			

面積（座標法）計算書

地番：W57-18

測点名	[1] X(i)	[2] X(i+1)-X(i-1)	[3] Y(i)	[4] Y(i+1)-Y(i-1)	[2]*[3]	[1]*[4]	方向角	夾角	距離
W57-52	-97368.750	-46.687	-2601.783	-5.588	121470.668130	544051.385963	106-40-00	90-05-49	7.959
W57-53	-97371.033	-3.982	-2594.159	13.363	10329.526416	-1301139.751169	106-29-43	179-49-43	5.984
W57-54	-97372.732	42.715	-2588.421	18.953	-110563.257300	-1845495.054647	16-34-11	90-04-28	46.338
W57-36	-97328.318	48.387	-2575.206	-0.151	-124605.656352	14660.681338	286-33-17	89-59-06	13.943
W57-37	-97324.345	-40.432	-2588.571	-26.577	104660.945104	2586630.512516	196-34-11	90-00-54	46.329
合計				倍面積	1292.225998	-1292.225998			120.553
				面積	646.1129995	646.1129995			

面積（座標法）計算書

地番：W57-19

測点名	[1] X(i)	[2] X(i+1)-X(i-1)	[3] Y(i)	[4] Y(i+1)-Y(i-1)	[2]*[3]	[1]*[4]	方向角	夾角	距離
W57-54	-97372.732	-47.458	-2588.421	-2.936	122840.485922	285840.380649	106-29-43	89-55-32	10.720
W57-55	-97375.776	41.359	-2578.141	23.491	-106629.839139	-2287430.286065	16-34-11	90-04-28	46.327
W57-35	-97331.373	47.458	-2564.930	2.936	-121725.668865	-285718.969592	286-33-17	89-59-06	10.720
W57-36	-97328.318	-41.359	-2575.206	-23.491	106508.428082	2286315.469008	196-34-11	90-00-54	46.338
合計				倍面積	993.406000	-993.406000			114.105
				面積	496.7030002	496.7030002			

面積（座標法）計算書

地番：W57-20

測点名	[1] X(i)	[2] X(i+1)-X(i-1)	[3] Y(i)	[4] Y(i+1)-Y(i-1)	[2]*[3]	[1]*[4]	方向角	夾角	距離
W57-40	-97321.163	46.096	-2599.275	7.447	-119815.726384	-724737.380328	286-33-17	89-59-06	6.008
W57-41	-97319.451	-42.661	-2605.034	-18.961	111132.895226	1845322.137064	196-34-11	90-00-54	46.295
W57-45	-97363.824	-46.096	-2618.237	-7.447	120689.772022	725055.069622	106-40-00	90-05-49	6.008
W57-49	-97365.547	42.661	-2612.481	18.961	-111450.584521	-1846196.182702	16-34-11	89-54-11	46.307
合計				倍面積	556.356343	-556.356343			104.618
				面積	278.1781717	278.1781717			