

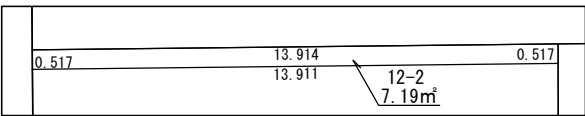
世界測地系

面積一覧表

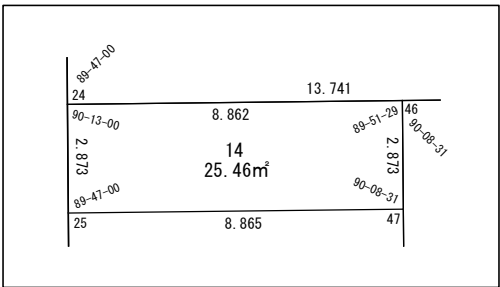
地番名	地積
W55-1	216.05㎡
W55-2	217.32㎡
W55-3	188.06㎡
W55-4	167.21㎡
W55-5	165.79㎡
W55-6	150.65㎡
W55-7	871.79㎡
W55-8	131.62㎡
W55-9-1	464.62㎡
W55-9-2	278.80㎡
W55-10	128.39㎡
W55-11	118.41㎡
W55-12-1	255.08㎡
W55-12-2	7.19㎡
W55-13	229.66㎡
W55-14	25.46㎡
合計	3616.10㎡

座 標 一 覧 表

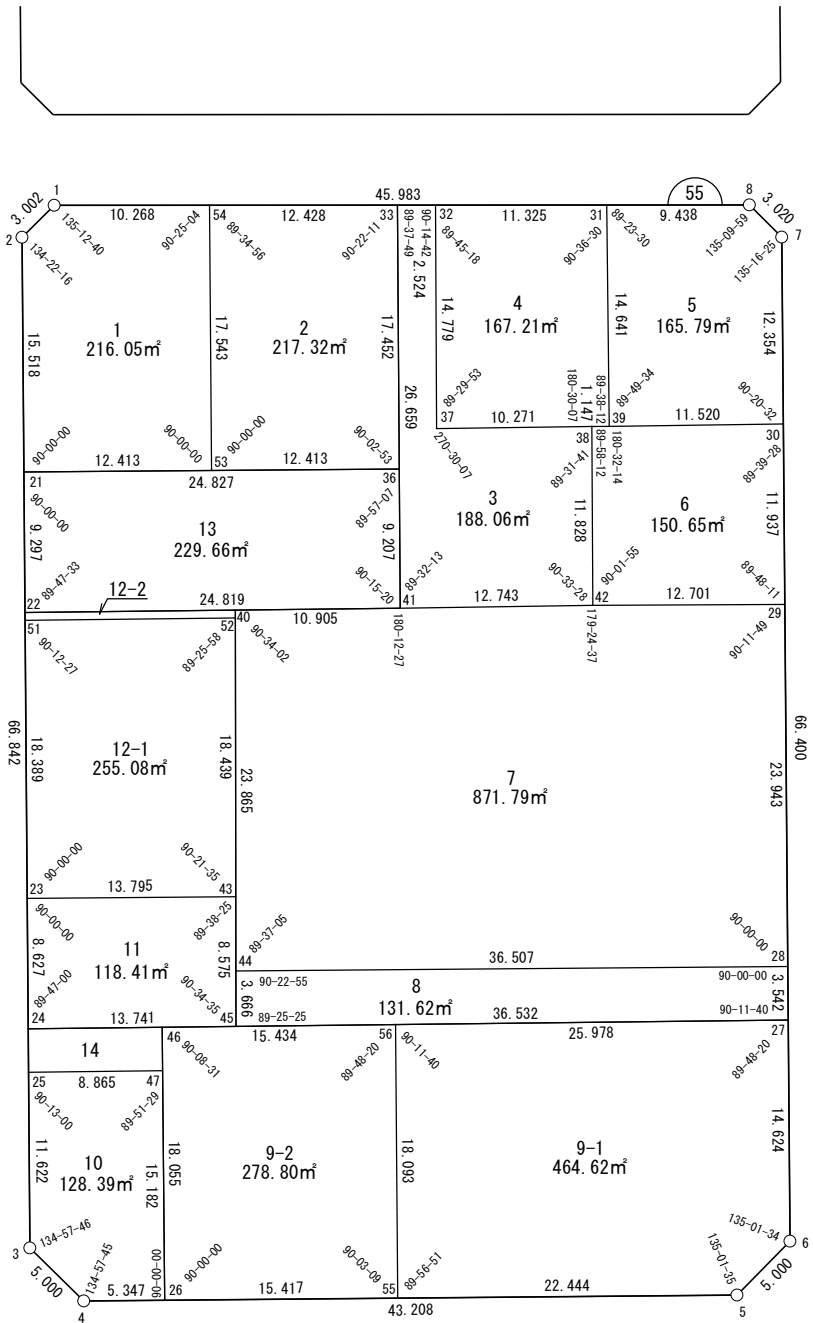
測 点 名	X 座 標	Y 座 標
W55-1	-97415.240	-2535.872
W55-2	-97416.641	-2538.527
W55-3	-97480.712	-2557.573
W55-4	-97485.107	-2555.188
W55-5	-97497.365	-2513.755
W55-6	-97494.979	-2509.360
W55-7	-97431.324	-2490.466
W55-8	-97428.663	-2491.892
W55-21	-97431.516	-2542.949
W55-22	-97440.427	-2545.598
W55-23	-97458.549	-2550.984
W55-24	-97466.818	-2553.442
W55-25	-97469.572	-2554.261
W55-26	-97486.624	-2550.060
W55-27	-97480.960	-2505.199
W55-28	-97477.564	-2504.191
W55-29	-97454.611	-2497.378
W55-30	-97443.168	-2493.981
W55-31	-97425.908	-2500.919
W55-32	-97422.602	-2511.751
W55-33	-97421.865	-2514.164
W55-36	-97438.590	-2519.151
W55-37	-97436.756	-2516.004
W55-38	-97439.626	-2506.142
W55-39	-97439.956	-2505.044
W55-40	-97444.344	-2532.246
W55-41	-97447.413	-2521.782
W55-42	-97450.955	-2509.541
W55-43	-97462.480	-2537.761
W55-44	-97467.176	-2539.189
W55-45	-97470.684	-2540.256
W55-46	-97469.311	-2544.939
W55-47	-97472.066	-2545.753
W55-51	-97440.923	-2545.745
W55-52	-97444.838	-2532.396
W55-53	-97435.053	-2531.050
W55-54	-97418.237	-2526.051
W55-55	-97490.998	-2535.277
W55-56	-97473.652	-2530.128



拡大図 1/200



拡大図 1/200



面積（座標法）計算書

地 番： W55-1

測点名	[1] X(i)	[2] X(i+1)-X(i-1)	[3] Y(i)	[4] Y(i+1)-Y(i-1)	[2]*[3]	[1]*[4]	方向角	夾 角	距 離
W55-1	-97415.240	1.596	-2535.872	-12.476	-4048.230648	1215320.389176	242-11-01	135-12-40	3.002
W55-2	-97416.641	-16.276	-2538.527	-7.077	41316.239152	689393.195497	196-33-17	134-22-16	15.518
W55-21	-97431.516	-18.412	-2542.949	7.477	46820.159813	-728518.501549	106-33-17	90-00-00	12.413
W55-53	-97435.053	13.278	-2531.050	16.897	-33608.299531	-1646385.177023	16-33-17	90-00-00	17.543
W55-54	-97418.237	19.813	-2526.051	-4.822	-50047.759141	469757.984255	286-58-21	90-25-04	10.268
合計				倍面積	432.109643	-432.109643			58.744
				面 積	216.0548219	216.0548219			

面積（座標法）計算書

地番：W55-2

測点名	[1] X(i)	[2] X(i+1)-X(i-1)	[3] Y(i)	[4] Y(i+1)-Y(i-1)	[2]*[3]	[1]*[4]	方向角	夾角	距離
W55-54	-97418.237	-13.187	-2526.051	-16.885	33312.057561	1644947.636603	196-33-17	89-34-56	17.543
W55-53	-97435.053	-20.352	-2531.050	6.900	51512.798006	-672339.943275	106-33-17	90-00-00	12.413
W55-36	-97438.590	13.187	-2519.151	16.885	-33221.059329	-1645291.294436	16-36-10	90-02-53	17.452
W55-33	-97421.865	20.352	-2514.164	-6.900	-51169.140173	672248.945042	286-58-21	90-22-11	12.428
合計				倍面積	434.656065	-434.656065			59.836
				面積	217.3280326	217.3280326			

面積（座標法）計算書

地番：W55-3

測点名	[1] X(i)	[2] X(i+1)-X(i-1)	[3] Y(i)	[4] Y(i+1)-Y(i-1)	[2]*[3]	[1]*[4]	方向角	夾角	距離
W55-32	-97422.602	14.890	-2511.751	1.840	-37400.457654	-179236.593468	286-58-21	90-14-42	2.524
W55-33	-97421.865	-24.811	-2514.164	-10.031	62378.443256	977259.366456	196-36-10	89-37-49	26.659
W55-41	-97447.413	-29.090	-2521.782	4.623	73358.156654	-450541.175750	106-08-23	89-32-13	12.743
W55-42	-97450.955	7.787	-2509.541	15.639	-19542.895394	-1524065.943031	16-41-51	90-33-28	11.828
W55-38	-97439.626	14.200	-2506.142	-6.463	-35586.260065	629773.083879	286-13-32	89-31-41	10.271
W55-37	-97436.756	17.023	-2516.004	-5.608	-42830.862522	546435.137641	16-43-39	270-30-07	14.779
合計				倍面積	376.124273	-376.124273			78.804
				面積	188.0621369	188.0621369			

面積（座標法）計算書

地番：W55-4

測点名	[1] X(i)	[2] X(i+1)-X(i-1)	[3] Y(i)	[4] Y(i+1)-Y(i-1)	[2]*[3]	[1]*[4]	方向角	夾角	距離
W55-31	-97425.908	17.353	-2500.919	-6.707	-43399.696761	653393.097088	286-58-21	90-36-30	11.325
W55-32	-97422.602	-10.848	-2511.751	-15.085	27246.592412	1469631.157718	196-43-39	89-45-18	14.779
W55-37	-97436.756	-17.023	-2516.004	5.608	42830.862522	-546435.137641	106-13-32	89-29-53	10.271
W55-38	-97439.626	-3.200	-2506.142	10.960	8019.733366	-1067960.210332	106-43-39	180-30-07	1.147
W55-39	-97439.956	13.718	-2505.044	5.223	-34363.064757	-508963.333615	16-21-51	89-38-12	14.641
合計				倍面積	334.426781	-334.426781			52.163
				面積	167.2133909	167.2133909			

面積（座標法）計算書

地番：W55-5

測点名	[1] X(i)	[2] X(i+1)-X(i-1)	[3] Y(i)	[4] Y(i+1)-Y(i-1)	[2]*[3]	[1]*[4]	方向角	夾角	距離
W55-7	-97431.324	14.505	-2490.466	2.089	-36123.335297	-203522.997684	331-48-22	135-16-25	3.020
W55-8	-97428.663	5.416	-2491.892	-10.454	-13497.030773	1018479.892563	286-58-21	135-09-59	9.438
W55-31	-97425.908	-11.293	-2500.919	-13.152	28241.876045	1281333.042440	196-21-51	89-23-30	14.641
W55-39	-97439.956	-17.260	-2505.044	6.938	43236.394589	-676047.659658	106-11-25	89-49-34	11.520
W55-30	-97443.168	8.631	-2493.981	14.578	-21526.305935	-1420573.876288	16-31-57	90-20-32	12.354
合計				倍面積	331.598626	-331.598626			50.973
				面積	165.7993135	165.7993135			

面積（座標法）計算書

地番：W55-6

測点名	[1] X(i)	[2] X(i+1)-X(i-1)	[3] Y(i)	[4] Y(i+1)-Y(i-1)	[2]*[3]	[1]*[4]	方向角	夾角	距離
W55-29	-97454.611	7.788	-2497.378	15.560	-19448.409088	-1516393.419632	16-31-57	89-48-11	11.937
W55-30	-97443.168	14.656	-2493.981	-7.666	-36550.666659	747016.357016	286-11-25	89-39-28	11.520
W55-39	-97439.956	3.542	-2505.044	-12.161	-8873.329831	1185010.993273	286-43-39	180-32-14	1.147
W55-38	-97439.626	-11.000	-2506.142	-4.497	27566.526698	438187.126452	196-41-51	89-58-12	11.828
W55-42	-97450.955	-14.986	-2509.541	8.765	37607.187035	-854122.365264	106-43-46	90-01-55	12.701
合計				倍面積	301.308155	-301.308155			49.133
				面積	150.6540777	150.6540777			

面積（座標法）計算書

地番：W55-7

測点名	[1] X(i)	[2] X(i+1)-X(i-1)	[3] Y(i)	[4] Y(i+1)-Y(i-1)	[2]*[3]	[1]*[4]	方向角	夾角	距離
W55-28	-97477.564	12.565	-2504.191	41.811	-31464.228113	-4075673.809805	16-31-57	90-00-00	23.943
W55-29	-97454.611	26.609	-2497.378	-5.350	-66453.222397	521372.931465	286-43-46	90-11-49	12.701
W55-42	-97450.955	7.198	-2509.541	-24.404	-18064.291640	2378188.308296	286-08-23	179-24-37	12.743
W55-41	-97447.413	6.612	-2521.782	-22.705	-16672.988019	2212546.737678	286-20-50	180-12-27	10.905
W55-40	-97444.344	-19.763	-2532.246	-17.407	50044.455992	1696257.842621	196-54-52	90-34-02	23.865
W55-44	-97467.176	-33.221	-2539.189	28.055	84353.869304	-2734435.605383	106-31-57	89-37-05	36.507
合計				倍面積	1743.595126	-1743.595126			120.664
				面積	871.7975632	871.7975632			

面積（座標法）計算書

地番：W55-8

測点名	[1] X(i)	[2] X(i+1)-X(i-1)	[3] Y(i)	[4] Y(i+1)-Y(i-1)	[2]*[3]	[1]*[4]	方向角	夾角	距離
W55-44	-97467.176	6.881	-2539.189	-36.065	-17471.893295	3515134.652762	196-54-52	90-22-55	3.666
W55-45	-97470.684	-13.784	-2540.256	33.990	35015.694452	-3313044.344727	106-20-17	89-25-25	36.532
W55-27	-97480.960	-6.881	-2505.199	36.065	17238.010575	-3515631.781483	16-31-57	90-11-40	3.542
W55-28	-97477.564	13.784	-2504.191	-33.990	-34518.565731	3313278.227447	286-31-57	90-00-00	36.507
合計				倍面積	263.246000	-263.246000			80.247
				面積	131.6230003	131.6230003			

面積（座標法）計算書

地番：W55-9-1

測点名	[1] X(i)	[2] X(i+1)-X(i-1)	[3] Y(i)	[4] Y(i+1)-Y(i-1)	[2]*[3]	[1]*[4]	方向角	夾角	距離
W55-56	-97473.652	-10.038	-2530.128	-30.078	25396.659165	2931788.076116	196-31-57	90-11-40	18.093
W55-55	-97490.998	-23.712	-2535.277	16.373	60117.345498	-1596241.124540	106-28-48	89-56-51	22.444
W55-5	-97497.365	-3.982	-2513.755	25.916	10008.616875	-2526778.193492	61-30-23	135-01-35	5.000
W55-6	-97494.979	16.405	-2509.360	8.556	-41165.071342	-834150.889064	16-31-57	135-01-34	14.624
W55-27	-97480.960	21.327	-2505.199	-20.768	-53428.306462	2024452.887247	286-20-17	89-48-20	25.978
合計				倍面積	929.243733	-929.243733			86.139
				面積	464.6218669	464.6218669			

面積（座標法）計算書

地番：W55-9-2

測点名	[1] X(i)	[2] X(i+1)-X(i-1)	[3] Y(i)	[4] Y(i+1)-Y(i-1)	[2]*[3]	[1]*[4]	方向角	夾角	距離
W55-46	-97469.311	-12.972	-2544.939	-19.932	33012.786894	1942788.309217	196-28-48	90-08-31	18.055
W55-26	-97486.624	-21.687	-2550.060	9.662	55303.079250	-941886.212819	106-28-48	90-00-00	15.417
W55-55	-97490.998	12.972	-2535.277	19.932	-32887.455953	-1943220.580540	16-31-57	90-03-09	18.093
W55-56	-97473.652	21.687	-2530.128	-9.662	-54870.807927	941760.881879	286-20-17	89-48-20	15.434
合計				倍面積	557.602263	-557.602263			66.999
				面積	278.8011319	278.8011319			

面積（座標法）計算書

地番：W55-10

測点名	[1] X(i)	[2] X(i+1)-X(i-1)	[3] Y(i)	[4] Y(i+1)-Y(i-1)	[2]*[3]	[1]*[4]	方向角	夾角	距離
W55-25	-97469.572	-8.647	-2554.261	-11.819	22086.218329	1152001.884800	196-33-17	90-13-00	11.622
W55-3	-97480.712	-15.536	-2557.573	-0.927	39733.704443	90369.650478	151-31-03	134-57-46	5.000
W55-4	-97485.107	-5.912	-2555.188	7.512	15106.043293	-732320.781026	106-28-48	134-57-45	5.347
W55-26	-97486.624	13.042	-2550.060	9.435	-33257.422850	-919740.190003	16-28-48	90-00-00	15.182
W55-47	-97472.066	17.053	-2545.753	-4.201	-43411.757213	409432.649749	286-20-17	89-51-29	8.865
合計				倍面積	256.786001	-256.786001			46.016
				面積	128.3930006	128.3930006			

面積（座標法）計算書

地番：W55-11

測点名	[1] X(i)	[2] X(i+1)-X(i-1)	[3] Y(i)	[4] Y(i+1)-Y(i-1)	[2]*[3]	[1]*[4]	方向角	夾角	距離
W55-23	-97458.549	-4.338	-2550.984	-15.681	11066.876829	1528268.784344	196-33-17	90-00-00	8.627
W55-24	-97466.818	-12.134	-2553.442	10.729	30984.588281	-1045673.362084	106-20-17	89-47-00	13.741
W55-45	-97470.684	4.338	-2540.256	15.681	-11020.333598	-1528459.067113	16-54-52	90-34-35	8.575
W55-43	-97462.480	12.134	-2537.761	-10.729	-30794.305511	1045626.818854	286-33-17	89-38-25	13.795
合計				倍面積	236.826000	-236.826000			44.738
				面積	118.4130001	118.4130001			

面積（座標法）計算書

地番：W55-12-1

測点名	[1] X(i)	[2] X(i+1)-X(i-1)	[3] Y(i)	[4] Y(i+1)-Y(i-1)	[2]*[3]	[1]*[4]	方向角	夾角	距離
W55-51	-97440.923	-13.711	-2545.745	-18.588	34904.662102	1811232.315472	196-33-17	90-12-27	18.389
W55-23	-97458.549	-21.557	-2550.984	7.984	54991.429129	-778086.195964	106-33-17	90-00-00	13.795
W55-43	-97462.480	13.711	-2537.761	18.588	-34795.196842	-1811633.016049	16-54-52	90-21-35	18.439
W55-52	-97444.838	21.557	-2532.396	-7.984	-54590.728552	777976.730703	286-20-50	89-25-58	13.911
合計				倍面積	510.165837	-510.165837			64.534
				面積	255.0829189	255.0829189			

面積（座標法）計算書

地番：W55-12-2

測点名	[1] X(i)	[2] X(i+1)-X(i-1)	[3] Y(i)	[4] Y(i+1)-Y(i-1)	[2]*[3]	[1]*[4]	方向角	夾角	距離
W55-40	-97444.344	4.411	-2532.246	-13.201	-11168.953206	1286388.967183	286-20-50	89-25-58	13.914
W55-22	-97440.427	3.421	-2545.598	-13.499	-8708.051967	1315337.858979	196-33-17	90-12-27	0.517
W55-51	-97440.923	-4.411	-2545.745	13.201	11228.492640	-1286343.807913	106-20-50	89-47-33	13.911
W55-52	-97444.838	-3.421	-2532.396	13.499	8662.892697	-1315397.398413	16-54-52	90-34-02	0.517
合計				倍面積	14.380164	-14.380164			28.859
				面積	7.1900823	7.1900823			

面積（座標法）計算書

地番：W55-13

測点名	[1] X(i)	[2] X(i+1)-X(i-1)	[3] Y(i)	[4] Y(i+1)-Y(i-1)	[2]*[3]	[1]*[4]	方向角	夾角	距離
W55-21	-97431.516	-1.838	-2542.949	-26.447	4673.004152	2576736.946644	196-33-17	90-00-00	9.297
W55-22	-97440.427	-15.897	-2545.598	21.167	40467.622647	-2062512.407899	106-20-50	89-47-33	24.819
W55-41	-97447.413	1.838	-2521.782	26.447	-4634.107165	-2577157.371658	16-36-10	90-15-20	9.207
W55-36	-97438.590	15.897	-2519.151	-21.167	-40047.197633	2062473.510912	286-33-17	89-57-07	24.827
合計				倍面積	459.322000	-459.322000			68.150
				面積	229.6610005	229.6610005			

面積（座標法）計算書

地番：W55-14

測点名	[1] X(i)	[2] X(i+1)-X(i-1)	[3] Y(i)	[4] Y(i+1)-Y(i-1)	[2]*[3]	[1]*[4]	方向角	夾角	距離
W55-47	-97472.066	0.261	-2545.753	9.322	-664.087033	-908675.953589	16-28-48	90-08-31	2.873
W55-46	-97469.311	5.248	-2544.939	-7.689	-13354.793963	749434.543107	286-20-17	89-51-29	8.862
W55-24	-97466.818	-0.261	-2553.442	-9.322	666.092772	908627.033329	196-33-17	90-13-00	2.873
W55-25	-97469.572	-5.248	-2554.261	7.689	13403.714223	-749436.548846	106-20-17	89-47-00	8.865
合計				倍面積	50.925999	-50.925999			23.473
				面積	25.4629999	25.4629999			