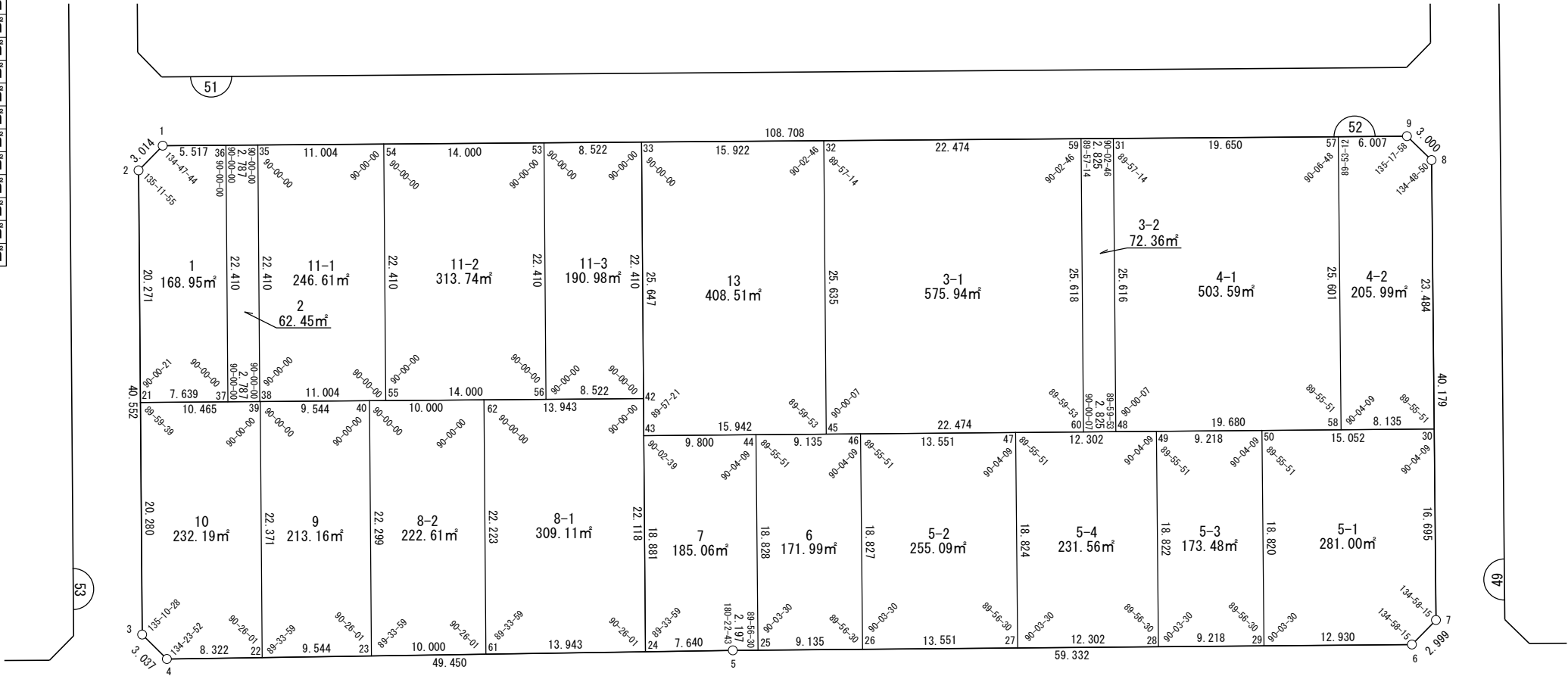


面積一覧表

地番名	面積
W52-1	168.95 m ²
W52-2	62.45 m ²
W52-3-1	575.94 m ²
W52-3-2	72.36 m ²
W52-4-1	503.59 m ²
W52-4-2	205.99 m ²
W52-5-1	281.00 m ²
W52-5-2	255.09 m ²
W52-5-3	173.48 m ²
W52-5-4	231.56 m ²
W52-6	171.99 m ²
W52-7	185.06 m ²
W52-8-1	309.11 m ²
W52-8-2	222.61 m ²
W52-9	213.16 m ²
W52-10	232.19 m ²
W52-11-1	246.61 m ²
W52-11-2	313.74 m ²
W52-11-3	190.98 m ²
W52-13	408.51 m ²
合計	5024.37 m ²



世界測地系



座 標 一 覧 表

測 点 名	X 座 標	Y 座 標
W52-1	-97475.916	-2429.542
W52-2	-97477.361	-2432.187
W52-3	-97516.232	-2443.742
W52-4	-97518.907	-2442.303
W52-5	-97532.642	-2394.799
W52-6	-97549.499	-2337.912
W52-7	-97548.067	-2335.277
W52-8	-97509.532	-2323.901
W52-9	-97506.902	-2325.343
W52-21	-97496.792	-2437.963
W52-22	-97521.218	-2434.309
W52-23	-97523.869	-2425.140
W52-24	-97530.520	-2402.139
W52-25	-97533.266	-2392.693
W52-26	-97535.862	-2383.934
W52-27	-97539.712	-2370.942

測 点 名	X 座 標	Y 座 標
W52-28	-97543.207	-2359.147
W52-29	-97545.826	-2350.309
W52-30	-97532.055	-2330.550
W52-31	-97499.588	-2349.936
W52-32	-97492.377	-2374.186
W52-33	-97487.839	-2389.447
W52-35	-97478.283	-2421.582
W52-36	-97477.489	-2424.253
W52-37	-97498.970	-2430.641
W52-38	-97499.764	-2427.970
W52-39	-97499.775	-2427.932
W52-40	-97502.495	-2418.784
W52-42	-97509.320	-2395.835
W52-43	-97512.423	-2396.757
W52-44	-97515.208	-2387.362
W52-45	-97516.955	-2381.473

測 点 名	X 座 標	Y 座 標
W52-46	-97517.806	-2378.604
W52-47	-97521.658	-2365.612
W52-48	-97524.147	-2357.217
W52-49	-97525.155	-2353.818
W52-50	-97527.776	-2344.981
W52-53	-97485.410	-2397.615
W52-54	-97481.420	-2411.034
W52-55	-97502.900	-2417.422
W52-56	-97506.891	-2404.003
W52-57	-97505.189	-2331.101
W52-58	-97529.742	-2338.349
W52-59	-97498.783	-2352.644
W52-60	-97523.344	-2359.926
W52-61	-97526.647	-2415.533
W52-62	-97505.346	-2409.199

面積（座標法）計算書

地番：W52-1

測点名	[1] X(i)	[2] X(i+1)-X(i-1)	[3] Y(i)	[4] Y(i+1)-Y(i-1)	[2]*[3]	[1]*[4]	方向角	夾角	距離
W52-36	-97477.489	23.053	-2424.253	1.099	-55887.184605	-107139.350296	286-33-39	90-00-00	5.517
W52-1	-97475.916	0.128	-2429.542	-7.934	-310.285298	773365.204717	241-21-23	134-47-44	3.014
W52-2	-97477.361	-20.876	-2432.187	-8.421	50774.221214	820897.262317	196-33-18	135-11-55	20.271
W52-21	-97496.792	-21.608	-2437.963	1.546	52680.574380	-150754.648842	106-33-39	90-00-21	7.639
W52-37	-97498.970	19.303	-2430.641	13.710	-46919.425491	-1336706.368095	16-33-39	90-00-00	22.410
合計				倍面積	337.900199	-337.900199			58.851
				面積	168.9500999	168.9500999			

面積（座標法）計算書

地番：W52-2

測点名	[1] X(i)	[2] X(i+1)-X(i-1)	[3] Y(i)	[4] Y(i+1)-Y(i-1)	[2]*[3]	[1]*[4]	方向角	夾角	距離
W52-35	-97478.283	22.275	-2421.582	3.717	-53940.769676	-362286.860985	286-33-39	90-00-00	2.787
W52-36	-97477.489	-20.686	-2424.253	-9.059	50149.159944	883021.842971	196-33-39	90-00-00	22.410
W52-37	-97498.970	-22.275	-2430.641	-3.717	54142.552884	362363.743994	106-33-39	90-00-00	2.787
W52-38	-97499.764	20.686	-2427.970	9.059	-50226.042953	-883223.626179	16-33-39	90-00-00	22.410
合計				倍面積	124.900199	-124.900199			50.394
				面積	62.4500996	62.4500996			

面積（座標法）計算書

地番：W52-3-1

測点名	[1] X(i)	[2] X(i+1)-X(i-1)	[3] Y(i)	[4] Y(i+1)-Y(i-1)	[2]*[3]	[1]*[4]	方向角	夾角	距離
W52-59	-97498.783	30.967	-2352.644	-14.260	-72854.135529	1390335.961977	286-33-39	90-02-46	22.474
W52-32	-97492.377	-18.172	-2374.186	-28.829	43142.779670	2810629.633051	196-30-53	89-57-14	25.635
W52-45	-97516.955	-30.967	-2381.473	14.260	73746.887941	-1390595.089765	106-31-00	90-00-07	22.474
W52-60	-97523.344	18.172	-2359.926	28.829	-42883.651882	-2811522.385462	16-30-53	89-59-53	25.618
合計				倍面積	1151.880200	-1151.880200			96.201
				面積	575.9401000	575.9401000			

面積（座標法）計算書

地番：W52-3-2

測点名	[1] X(i)	[2] X(i+1)-X(i-1)	[3] Y(i)	[4] Y(i+1)-Y(i-1)	[2]*[3]	[1]*[4]	方向角	夾角	距離
W52-59	-97498.783	-23.756	-2352.644	-9.990	55889.016580	973989.114693	196-30-53	89-57-14	25.618
W52-60	-97523.344	-25.364	-2359.926	-4.574	59857.314272	446062.990925	106-31-00	90-00-07	2.825
W52-48	-97524.147	23.756	-2357.217	9.990	-55997.673637	-974242.495550	16-30-53	89-59-53	25.616
W52-31	-97499.588	25.364	-2349.936	4.574	-59603.933416	-445954.333868	286-33-39	90-02-46	2.825
合計				倍面積	144.723799	-144.723799			56.884
				面積	72.3619000	72.3619000			

面積（座標法）計算書

地番：W52-4-1

測点名	[1] X(i)	[2] X(i+1)-X(i-1)	[3] Y(i)	[4] Y(i+1)-Y(i-1)	[2]*[3]	[1]*[4]	方向角	夾角	距離
W52-48	-97524.147	-30.154	-2357.217	11.587	71079.374175	-1129984.104887	106-31-00	90-00-07	19.680
W52-58	-97529.742	18.958	-2338.349	26.117	-44330.305069	-2547156.155017	16-26-51	89-55-51	25.601
W52-57	-97505.189	30.154	-2331.101	-11.587	-70291.852648	1129764.444616	286-33-39	90-06-48	19.650
W52-31	-97499.588	-18.958	-2349.936	-26.117	44549.965340	2546368.633490	196-30-53	89-57-14	25.616
合計				倍面積	1007.181798	-1007.181798			90.547
				面積	503.5908992	503.5908992			

面積（座標法）計算書

地 番： W52-4-2

測点名	[1] X(i)	[2] X(i+1)-X(i-1)	[3] Y(i)	[4] Y(i+1)-Y(i-1)	[2]*[3]	[1]*[4]	方向角	夾 角	距 離
W52-57	-97505.189	-22.841	-2331.101	-13.006	53244.156228	1268182.694969	196-26-51	89-53-12	25.601
W52-58	-97529.742	-26.866	-2338.349	0.551	62821.414212	-53724.041025	106-31-00	90-04-09	8.135
W52-30	-97532.055	20.211	-2330.550	14.449	-47101.751054	-1409203.196655	16-26-51	89-55-51	23.484
W52-8	-97509.532	25.154	-2323.901	5.207	-58454.282817	-507730.786065	331-15-41	134-48-50	3.000
W52-9	-97506.902	4.342	-2325.343	-7.200	-10097.556508	702063.348715	286-33-39	135-17-58	6.007
合計				倍面積	411.980060	-411.980060			66.227
				面 積	205.9900304	205.9900304			

面積（座標法）計算書

地番：W52-5-1

測点名	[1] X(i)	[2] X(i+1)-X(i-1)	[3] Y(i)	[4] Y(i+1)-Y(i-1)	[2]*[3]	[1]*[4]	方向角	夾角	距離
W52-29	-97545.826	-21.723	-2350.309	7.068	51056.773896	-689489.500770	106-30-21	90-03-30	12.930
W52-6	-97549.499	-2.241	-2337.912	15.032	5239.841099	-1466402.693297	61-28-36	134-58-15	2.999
W52-7	-97548.067	17.444	-2335.277	7.362	-40737.169541	-718187.791065	16-26-51	134-58-15	16.695
W52-30	-97532.055	20.291	-2330.550	-9.704	-47289.531238	946425.469716	286-31-00	90-04-09	15.052
W52-50	-97527.776	-13.771	-2344.981	-19.759	32292.091783	1927092.509416	196-26-51	89-55-51	18.820
合計				倍面積	562.006000	-562.006000			66.496
				面積	281.0030002	281.0030002			

面積（座標法）計算書

地番：W52-5-2

測点名	[1] X(i)	[2] X(i+1)-X(i-1)	[3] Y(i)	[4] Y(i+1)-Y(i-1)	[2]*[3]	[1]*[4]	方向角	夾角	距離
W52-26	-97535.862	-21.906	-2383.934	7.662	52222.941927	-747279.803488	106-30-21	90-03-30	13.551
W52-27	-97539.712	14.204	-2370.942	18.322	-33676.779512	-1787119.350633	16-26-51	89-56-30	18.824
W52-47	-97521.658	21.906	-2365.612	-7.662	-51821.577279	747170.978534	286-31-00	90-04-09	13.551
W52-46	-97517.806	-14.204	-2378.604	-18.322	33785.604466	1786717.985984	196-26-51	89-55-51	18.827
合計				倍面積	510.189602	-510.189602			64.753
				面積	255.0948011	255.0948011			

面積（座標法）計算書

地番：W52-5-3

測点名	[1] X(i)	[2] X(i+1)-X(i-1)	[3] Y(i)	[4] Y(i+1)-Y(i-1)	[2]*[3]	[1]*[4]	方向角	夾角	距離
W52-28	-97543.207	-20.670	-2359.147	3.509	48764.543039	-342237.101311	106-30-21	90-03-30	9.218
W52-29	-97545.826	15.431	-2350.309	14.166	-36267.798022	-1381871.654721	16-26-51	89-56-30	18.820
W52-50	-97527.776	20.670	-2344.981	-3.509	-48471.718033	342182.960318	286-31-00	90-04-09	9.218
W52-49	-97525.155	-15.431	-2353.818	-14.166	36321.939015	1381578.829715	196-26-51	89-55-51	18.822
合計				倍面積	346.965998	-346.965998			56.078
				面積	173.4829995	173.4829995			

面積（座標法）計算書

地番：W52-5-4

測点名	[1] X(i)	[2] X(i+1)-X(i-1)	[3] Y(i)	[4] Y(i+1)-Y(i-1)	[2]*[3]	[1]*[4]	方向角	夾角	距離
W52-27	-97539.712	-21.549	-2370.942	6.465	51091.517715	-630631.262546	106-30-21	90-03-30	12.302
W52-28	-97543.207	14.556	-2359.147	17.124	-34340.672973	-1670364.815708	16-26-51	89-56-30	18.822
W52-49	-97525.155	21.549	-2353.818	-6.465	-50722.504324	630537.149937	286-31-00	90-04-09	12.302
W52-47	-97521.658	-14.556	-2365.612	-17.124	34434.785582	1669995.802317	196-26-51	89-55-51	18.824
合計				倍面積	463.125999	-463.125999			62.250
				面積	231.5629999	231.5629999			

面積（座標法）計算書

地番：W52-6

測点名	[1] X(i)	[2] X(i+1)-X(i-1)	[3] Y(i)	[4] Y(i+1)-Y(i-1)	[2]*[3]	[1]*[4]	方向角	夾角	距離
W52-25	-97533.266	-20.653	-2392.693	3.428	49417.262241	-334310.817610	106-30-21	90-03-30	9.135
W52-26	-97535.862	15.461	-2383.934	14.089	-36857.801558	-1374208.370871	16-26-51	89-56-30	18.827
W52-46	-97517.806	20.653	-2378.604	-3.428	-49126.270983	334257.822868	286-31-00	90-04-09	9.135
W52-44	-97515.208	-15.461	-2387.362	-14.089	36910.796300	1373917.379613	196-26-51	89-55-51	18.828
合計				倍面積	343.985999	-343.985999			55.925
				面積	171.9930000	171.9930000			

面積（座標法）計算書

地番：W52-7

測点名	[1] X(i)	[2] X(i+1)-X(i-1)	[3] Y(i)	[4] Y(i+1)-Y(i-1)	[2]*[3]	[1]*[4]	方向角	夾角	距離
W52-44	-97515.208	20.844	-2387.362	-4.064	-49762.063330	396312.621654	286-31-00	90-04-09	9.800
W52-43	-97512.423	-15.312	-2396.757	-14.777	36698.325317	1440921.603974	196-33-39	90-02-39	18.881
W52-24	-97530.520	-20.220	-2402.139	1.958	48570.841098	-190954.000790	106-07-38	89-33-59	7.640
W52-5	-97532.642	-2.746	-2394.799	9.446	6576.929667	-921269.131961	106-30-21	180-22-43	2.197
W52-25	-97533.266	17.434	-2392.693	7.437	-41713.908456	-725381.217173	16-26-51	89-56-30	18.828
合計				倍面積	370.124296	-370.124296			57.346
				面積	185.0621483	185.0621483			

面積（座標法）計算書

地番：W52-8-1

測点名	[1] X(i)	[2] X(i+1)-X(i-1)	[3] Y(i)	[4] Y(i+1)-Y(i-1)	[2]*[3]	[1]*[4]	方向角	夾角	距離
W52-62	-97505.346	-17.327	-2409.199	-19.699	41744.931270	1920732.214307	196-33-39	90-00-00	22.223
W52-61	-97526.647	-25.174	-2415.533	7.060	60809.675407	-688550.150155	106-07-38	89-33-59	13.943
W52-24	-97530.520	17.327	-2402.139	19.699	-41622.598346	-1921228.118798	16-33-39	90-26-01	22.118
W52-42	-97509.320	25.174	-2395.835	-7.060	-60313.770916	688427.817231	286-33-39	90-00-00	13.943
合計				倍面積	618.237414	-618.237414			72.227
				面積	309.1187074	309.1187074			

面積（座標法）計算書

地番：W52-8-2

測点名	[1] X(i)	[2] X(i+1)-X(i-1)	[3] Y(i)	[4] Y(i+1)-Y(i-1)	[2]*[3]	[1]*[4]	方向角	夾角	距離
W52-40	-97502.495	-18.524	-2418.784	-15.941	44804.728302	1554296.584221	196-33-39	90-00-00	22.299
W52-23	-97523.869	-24.152	-2425.140	3.251	58571.385452	-317034.169025	106-07-38	89-33-59	10.000
W52-61	-97526.647	18.524	-2415.533	15.941	-44744.510919	-1554681.589625	16-33-39	90-26-01	22.223
W52-62	-97505.346	24.152	-2409.199	-3.251	-58186.380049	316973.951642	286-33-39	90-00-00	10.000
合計				倍面積	445.222786	-445.222786			64.522
				面積	222.6113933	222.6113933			

面積（座標法）計算書

地番：W52-9

測点名	[1] X(i)	[2] X(i+1)-X(i-1)	[3] Y(i)	[4] Y(i+1)-Y(i-1)	[2]*[3]	[1]*[4]	方向角	夾角	距離
W52-40	-97502.495	24.094	-2418.784	-2.792	-58278.764837	272219.693413	286-33-39	90-00-00	9.544
W52-39	-97499.775	-18.723	-2427.932	-15.524	45458.012842	1513619.668540	196-33-39	90-00-00	22.371
W52-22	-97521.218	-24.094	-2434.309	2.792	58652.812001	-272271.966450	106-07-38	89-33-59	9.544
W52-23	-97523.869	18.723	-2425.140	15.524	-45405.739805	-1513993.715703	16-33-39	90-26-01	22.299
合計				倍面積	426.320200	-426.320200			63.758
				面積	213.1601004	213.1601004			

面積（座標法）計算書

地 番： W52-10

測点名	[1] X(i)	[2] X(i+1)-X(i-1)	[3] Y(i)	[4] Y(i+1)-Y(i-1)	[2]*[3]	[1]*[4]	方向角	夾 角	距 離
W52-39	-97499.775	24.426	-2427.932	-3.655	-59305.085597	356340.179340	286-33-39	90-00-00	10.465
W52-21	-97496.792	-16.457	-2437.963	-15.810	40120.869554	1541414.270847	196-33-18	89-59-39	20.280
W52-3	-97516.232	-22.114	-2443.742	-4.340	54041.981525	423238.281859	151-43-46	135-10-28	3.037
W52-4	-97518.907	-4.986	-2442.303	9.433	12178.508751	-919934.560785	106-07-38	134-23-52	8.322
W52-22	-97521.218	19.131	-2434.309	14.371	-46571.894034	-1401522.551462	16-33-39	90-26-01	22.371
合計				倍面積 面 積	464.380200 232.1901000	-464.380200 232.1901000			64.475

面積（座標法）計算書

地番：W52-11-1

測点名	[1] X(i)	[2] X(i+1)-X(i-1)	[3] Y(i)	[4] Y(i+1)-Y(i-1)	[2]*[3]	[1]*[4]	方向角	夾角	距離
W52-54	-97481.420	24.617	-2411.034	-4.160	-59353.148013	405538.254192	286-33-39	90-00-00	11.004
W52-35	-97478.283	-18.344	-2421.582	-16.935	44421.867998	1650841.094990	196-33-39	90-00-00	22.410
W52-38	-97499.764	-24.617	-2427.970	4.160	59770.053623	-405614.568781	106-33-39	90-00-00	11.004
W52-55	-97502.900	18.344	-2417.422	16.935	-44345.553409	-1651258.000600	16-33-39	90-00-00	22.410
合計				倍面積	493.220198	-493.220198			66.828
				面積	246.6100992	246.6100992			

面積（座標法）計算書

地番：W52-11-2

測点名	[1] X(i)	[2] X(i+1)-X(i-1)	[3] Y(i)	[4] Y(i+1)-Y(i-1)	[2]*[3]	[1]*[4]	方向角	夾角	距離
W52-53	-97485.410	25.471	-2397.615	-7.031	-61069.915306	685458.151992	286-33-39	90-00-00	14.000
W52-54	-97481.420	-17.490	-2411.034	-19.807	42169.812153	1930786.063946	196-33-39	90-00-00	22.410
W52-55	-97502.900	-25.471	-2417.422	7.031	61574.414067	-685581.133431	106-33-39	90-00-00	14.000
W52-56	-97506.891	17.490	-2404.003	19.807	-42046.830714	-1931290.562707	16-33-39	90-00-00	22.410
合計				倍面積	627.480200	-627.480200			72.820
				面積	313.7401003	313.7401003			

面積（座標法）計算書

地番：W52-11-3

測点名	[1] X(i)	[2] X(i+1)-X(i-1)	[3] Y(i)	[4] Y(i+1)-Y(i-1)	[2]*[3]	[1]*[4]	方向角	夾角	距離
W52-56	-97506.891	-23.910	-2404.003	1.781	57479.121969	-173640.700157	106-33-39	90-00-00	8.522
W52-42	-97509.320	19.052	-2395.835	14.556	-45644.701738	-1419357.428757	16-33-39	90-00-00	22.410
W52-33	-97487.839	23.910	-2389.447	-1.781	-57131.088706	173606.772821	286-33-39	90-00-00	8.522
W52-53	-97485.410	-19.052	-2397.615	-14.556	45678.629073	1419009.395494	196-33-39	90-00-00	22.410
合計				倍面積	381.960599	-381.960599			61.864
				面積	190.9802998	190.9802998			

面積（座標法）計算書

地番：W52-13

測点名	[1] X(i)	[2] X(i+1)-X(i-1)	[3] Y(i)	[4] Y(i+1)-Y(i-1)	[2]*[3]	[1]*[4]	方向角	夾角	距離
W52-32	-97492.377	29.116	-2374.186	-7.974	-69126.129599	777419.074275	286-33-39	90-02-46	15.922
W52-33	-97487.839	-20.045	-2389.447	-22.571	47897.015743	2200445.629456	196-33-39	90-00-00	25.647
W52-43	-97512.423	-29.116	-2396.757	7.974	69783.314753	-777578.918000	106-31-00	89-57-21	15.942
W52-45	-97516.955	20.045	-2381.473	22.571	-47737.172018	-2201102.814610	16-30-53	89-59-53	25.635
合計				倍面積	817.028879	-817.028879			83.146
				面積	408.5144398	408.5144398			