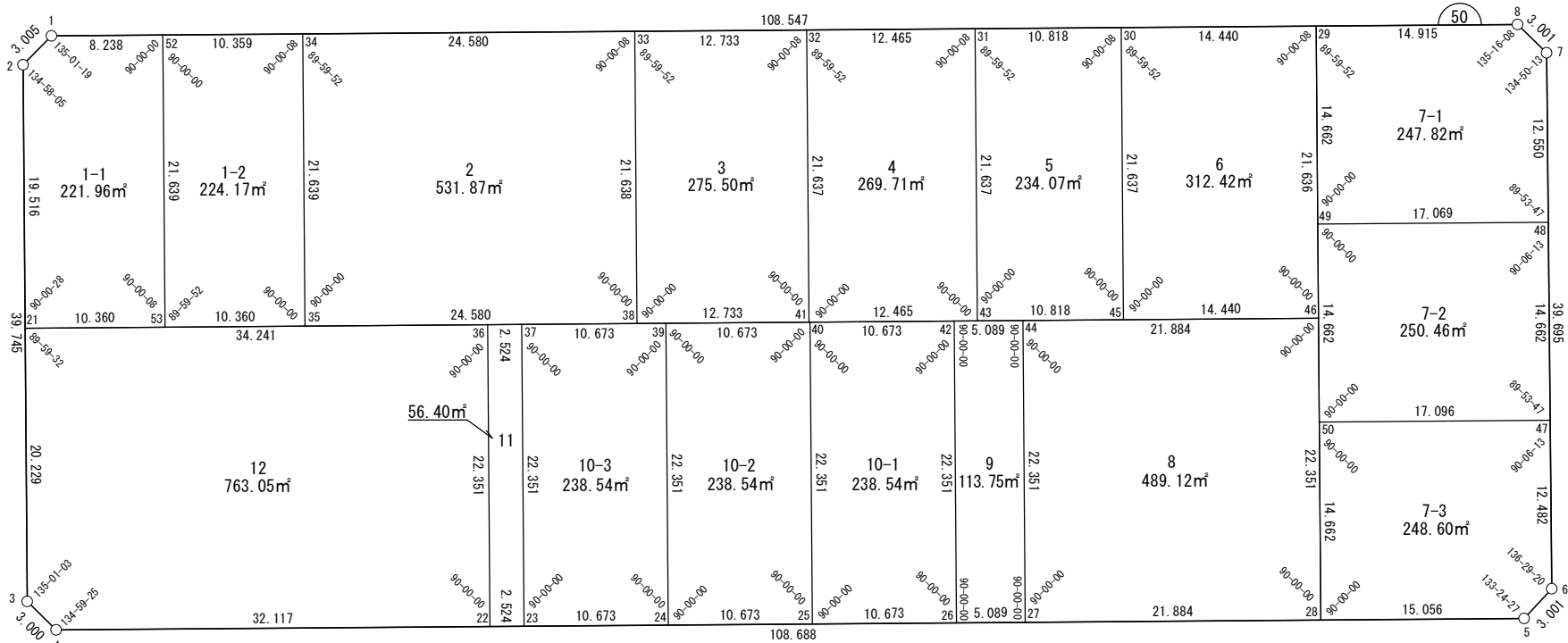
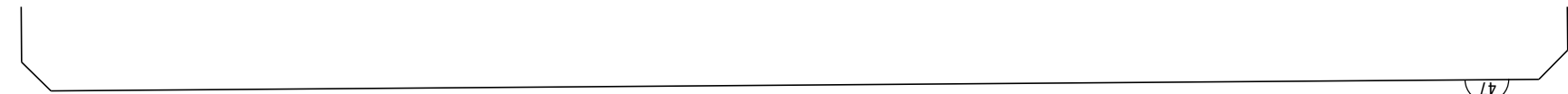
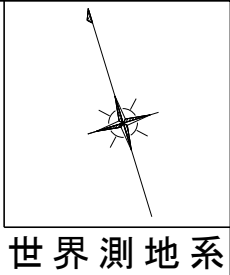


地 番	面 積
W50-1-1	221.96 m <sup>2</sup>
W50-1-2	224.17 m <sup>2</sup>
W50-2	531.87 m <sup>2</sup>
W50-3	275.50 m <sup>2</sup>
W50-4	269.71 m <sup>2</sup>
W50-5	234.07 m <sup>2</sup>
W50-6	312.42 m <sup>2</sup>
W50-7-1	247.82 m <sup>2</sup>
W50-7-2	250.46 m <sup>2</sup>
W50-7-3	248.60 m <sup>2</sup>
W50-8	489.12 m <sup>2</sup>
W50-9	113.75 m <sup>2</sup>
W50-10-1	238.54 m <sup>2</sup>
W50-10-2	238.54 m <sup>2</sup>
W50-10-3	238.54 m <sup>2</sup>
W50-11	56.40 m <sup>2</sup>
W50-12	763.05 m <sup>2</sup>
合 計	4954.52 m <sup>2</sup>



座 標 一 覧 表

測 点 名	X 座 標	Y 座 標
W50-1	-97380.094	-2401.046
W50-2	-97381.524	-2403.689
W50-3	-97419.623	-2415.008
W50-4	-97422.262	-2413.579
W50-5	-97453.230	-2309.396
W50-6	-97451.728	-2306.799
W50-7	-97413.658	-2295.558
W50-8	-97411.026	-2296.999
W50-21	-97400.232	-2409.247
W50-22	-97431.413	-2382.793
W50-23	-97432.132	-2380.374
W50-24	-97435.173	-2370.144
W50-25	-97438.214	-2359.914
W50-26	-97441.255	-2349.683
W50-27	-97442.705	-2344.805

測 点 名	X 座 標	Y 座 標
W50-28	-97448.940	-2323.829
W50-29	-97406.776	-2311.295
W50-30	-97402.661	-2325.137
W50-31	-97399.578	-2335.506
W50-32	-97396.026	-2347.455
W50-33	-97392.398	-2359.660
W50-34	-97385.394	-2383.221
W50-35	-97406.135	-2389.386
W50-36	-97409.988	-2376.425
W50-37	-97410.707	-2374.006
W50-38	-97413.139	-2365.825
W50-39	-97413.748	-2363.775
W50-40	-97416.767	-2353.620
W50-41	-97416.789	-2353.545
W50-42	-97419.830	-2343.315

測 点 名	X 座 標	Y 座 標
W50-43	-97420.318	-2341.671
W50-44	-97421.280	-2338.437
W50-45	-97423.401	-2331.301
W50-46	-97427.515	-2317.460
W50-47	-97439.756	-2303.264
W50-48	-97425.694	-2299.112
W50-49	-97420.831	-2315.473
W50-50	-97434.885	-2319.651
W50-52	-97382.442	-2393.150
W50-53	-97403.184	-2399.317

株式会社  
オオバ  
名古屋支店

豊田浄水特定土地区画整理組合

# 面積（座標法）計算書

地番：W50-1-1

測点名	[1] X(i)	[2] X(i+1)-X(i-1)	[3] Y(i)	[4] Y(i+1)-Y(i-1)	[2]*[3]	[1]*[4]	方向角	夾角	距離
W50-53	-97403.184	17.790	-2399.317	16.097	-42684.462134	-1567873.607201	16-33-24	90-00-08	21.639
W50-52	-97382.442	23.089	-2393.150	-1.730	-55256.455566	168437.093452	286-33-24	90-00-00	8.238
W50-1	-97380.094	0.917	-2401.046	-10.539	-2202.179672	1026265.833412	241-34-43	135-01-19	3.005
W50-2	-97381.524	-20.138	-2403.689	-8.201	48404.635981	798600.143470	196-32-48	134-58-05	19.516
W50-21	-97400.232	-21.659	-2409.247	4.372	52182.386828	-425873.388569	106-33-16	90-00-28	10.360
合計				倍面積	443.925435	-443.925435			62.758
				面積	221.9627179	221.9627179			

面積（座標法）計算書

地番：W50-1-2

測点名	[1] X(i)	[2] X(i+1)-X(i-1)	[3] Y(i)	[4] Y(i+1)-Y(i-1)	[2]*[3]	[1]*[4]	方向角	夾角	距離
W50-53	-97403.184	-23.694	-2399.317	3.764	56849.084800	-366645.382370	106-33-16	89-59-52	10.360
W50-35	-97406.135	17.790	-2389.386	16.096	-42507.329366	-1567851.949846	16-33-16	90-00-00	21.639
W50-34	-97385.394	23.694	-2383.221	-3.764	-56467.707653	366578.416953	286-33-24	90-00-08	10.359
W50-52	-97382.442	-17.790	-2393.150	-16.096	42574.294783	1567470.572699	196-33-24	90-00-00	21.639
合計				倍面積	448.342564	-448.342564			63.997
				面積	224.1712822	224.1712822			

面積（座標法）計算書

地番：W50-2

測点名	[1] X(i)	[2] X(i+1)-X(i-1)	[3] Y(i)	[4] Y(i+1)-Y(i-1)	[2]*[3]	[1]*[4]	方向角	夾角	距離
W50-35	-97406.135	-27.745	-2389.386	17.396	66294.501642	-1694457.903744	106-33-16	90-00-00	24.580
W50-38	-97413.139	13.737	-2365.825	29.726	-32500.494047	-2895749.239255	16-33-16	90-00-00	21.638
W50-33	-97392.398	27.745	-2359.660	-17.396	-65469.728307	1694218.929075	286-33-24	90-00-08	24.580
W50-34	-97385.394	-13.737	-2383.221	-29.726	32739.468717	2894924.465920	196-33-16	89-59-52	21.639
合計				倍面積	1063.748004	-1063.748004			92.437
				面積	531.8740022	531.8740022			

# 面積（座標法）計算書

地番：W50-3

測点名	[1] X(i)	[2] X(i+1)-X(i-1)	[3] Y(i)	[4] Y(i+1)-Y(i-1)	[2]*[3]	[1]*[4]	方向角	夾角	距離
W50-38	-97413.139	-24.369	-2365.825	6.040	57652.453583	-588339.355277	106-33-16	90-00-00	12.733
W50-40	-97416.767	17.113	-2353.620	18.370	-40276.789003	-1789536.595432	16-33-16	90-00-00	21.637
W50-32	-97396.026	24.369	-2347.455	-6.040	-57204.799961	588236.000899	286-33-24	90-00-08	12.733
W50-33	-97392.398	-17.113	-2359.660	-18.370	40380.143381	1789088.941809	196-33-16	89-59-52	21.638
合計				倍面積	551.008000	-551.008000			68.741
				面積	275.5040004	275.5040004			

# 面積（座標法）計算書

地番：W50-4

測点名	[1] X(i)	[2] X(i+1)-X(i-1)	[3] Y(i)	[4] Y(i+1)-Y(i-1)	[2]*[3]	[1]*[4]	方向角	夾角	距離
W50-40	-97416.767	-24.292	-2353.620	5.784	57174.692355	-563412.880895	106-33-16	90-00-00	12.465
W50-43	-97420.318	17.188	-2341.671	18.114	-40249.619372	-1764626.260713	16-33-16	90-00-00	21.637
W50-31	-97399.578	24.292	-2335.506	-5.784	-56734.674088	563313.471162	286-33-24	90-00-08	12.465
W50-32	-97396.026	-17.188	-2347.455	-18.114	40349.029106	1764186.242446	196-33-16	89-59-52	21.637
合計				倍面積	539.428000	-539.428000			68.204
				面積	269.7140001	269.7140001			

# 面積（座標法）計算書

地番：W50-5

測点名	[1] X(i)	[2] X(i+1)-X(i-1)	[3] Y(i)	[4] Y(i+1)-Y(i-1)	[2]*[3]	[1]*[4]	方向角	夾角	距離
W50-43	-97420.318	-23.823	-2341.671	4.205	55784.536396	-409651.104525	106-33-16	90-00-00	10.818
W50-45	-97423.401	17.657	-2331.301	16.535	-41164.449228	-1610870.642816	16-33-16	90-00-00	21.637
W50-30	-97402.661	23.823	-2325.137	-4.205	-55390.637032	409576.855889	286-33-24	90-00-08	10.818
W50-31	-97399.578	-17.657	-2335.506	-16.535	41238.697863	1610476.743452	196-33-16	89-59-52	21.637
合計				倍面積	468.147999	-468.147999			64.910
				面積	234.0739999	234.0739999			

# 面積（座標法）計算書

地番：W50-6

測点名	[1] X(i)	[2] X(i+1)-X(i-1)	[3] Y(i)	[4] Y(i+1)-Y(i-1)	[2]*[3]	[1]*[4]	方向角	夾角	距離
W50-45	-97423.401	-24.854	-2331.301	7.676	57942.145524	-747866.723187	106-33-16	90-00-00	14.440
W50-46	-97427.515	16.625	-2317.460	20.006	-38527.572204	-1949129.276403	16-33-16	90-00-00	21.636
W50-29	-97406.776	24.854	-2311.295	-7.676	-57444.917985	747739.102728	286-33-24	90-00-08	14.440
W50-30	-97402.661	-16.625	-2325.137	-20.006	38655.192664	1948632.048864	196-33-16	89-59-52	21.637
合計				倍面積	624.847999	-624.847999			72.153
				面積	312.4239995	312.4239995			



# 面積（座標法）計算書

地番：W50-7-1

測点名	[1] X(i)	[2] X(i+1)-X(i-1)	[3] Y(i)	[4] Y(i+1)-Y(i-1)	[2]*[3]	[1]*[4]	方向角	夾角	距離
W50-7	-97413.658	14.668	-2295.558	2.112	-33671.221023	-205768.214115	331-17-16	134-50-13	3.001
W50-8	-97411.026	6.882	-2296.999	-15.738	-15807.987034	1533037.885844	286-33-24	135-16-08	14.915
W50-29	-97406.776	-9.805	-2311.295	-18.474	22661.259998	1799478.947877	196-33-16	89-59-52	14.662
W50-49	-97420.831	-18.918	-2315.473	12.184	43804.276270	-1186959.969009	106-33-16	90-00-00	17.069
W50-48	-97425.694	7.173	-2299.112	19.916	-16490.675265	-1940284.303541	16-27-03	89-53-47	12.550
合計				倍面積	495.652944	-495.652944			62.197
				面積	247.8264725	247.8264725			

# 面積（座標法）計算書

地番：W50-7-2

測点名	[1] X(i)	[2] X(i+1)-X(i-1)	[3] Y(i)	[4] Y(i+1)-Y(i-1)	[2]*[3]	[1]*[4]	方向角	夾角	距離
W50-48	-97425.694	18.926	-2299.112	-12.209	-43512.131058	1189497.422058	286-33-16	90-06-13	17.069
W50-49	-97420.831	-9.191	-2315.473	-20.539	21282.033479	2000950.483893	196-33-16	90-00-00	14.662
W50-50	-97434.885	-18.926	-2319.651	12.209	43900.849208	-1189609.640278	106-33-16	90-00-00	17.096
W50-47	-97439.756	9.191	-2303.264	20.539	-21169.815259	-2001339.202044	16-27-03	89-53-47	14.662
合計				倍面積	500.936370	-500.936370			63.489
				面積	250.4681852	250.4681852			

# 面積（座標法）計算書

地番：W50-7-3

測点名	[1] X(i)	[2] X(i+1)-X(i-1)	[3] Y(i)	[4] Y(i+1)-Y(i-1)	[2]*[3]	[1]*[4]	方向角	夾角	距離
W50-47	-97439.756	16.842	-2303.264	-12.852	-38792.561825	1252302.685219	286-33-16	90-06-13	17.096
W50-50	-97434.885	-9.184	-2319.651	-20.565	21302.892802	2003717.587424	196-33-16	90-00-00	14.662
W50-28	-97448.940	-18.345	-2323.829	10.254	42629.547163	-999275.741792	106-33-16	90-00-00	15.056
W50-5	-97453.230	-2.788	-2309.396	17.030	6438.100370	-1659606.459813	59-57-43	133-24-27	3.001
W50-6	-97451.728	13.474	-2306.799	6.133	-31080.767823	-597635.281725	16-27-03	136-29-20	12.482
合計				倍面積	497.210687	-497.210687			62.297
				面積	248.6053439	248.6053439			

面積（座標法）計算書

地番：W50-8

測点名	[1] X(i)	[2] X(i+1)-X(i-1)	[3] Y(i)	[4] Y(i+1)-Y(i-1)	[2]*[3]	[1]*[4]	方向角	夾角	距離
W50-27	-97442.705	-27.660	-2344.805	14.608	64857.164929	-1423445.603232	106-33-16	90-00-00	21.884
W50-28	-97448.940	15.190	-2323.829	27.345	-35297.911397	-2664732.755035	16-33-16	90-00-00	22.351
W50-46	-97427.515	27.660	-2317.460	-14.608	-64100.806290	1423223.713873	286-33-16	90-00-00	21.884
W50-44	-97421.280	-15.190	-2338.437	-27.345	35519.800756	2663976.396396	196-33-16	90-00-00	22.351
合計				倍面積	978.247998	-978.247998			88.470
				面積	489.1239991	489.1239991			

## 面 積 ( 座 標 法 ) 計 算 書

地 番 : W50-9

測点名	[1] X(i)	[2] X(i+1)-X(i-1)	[3] Y(i)	[4] Y(i+1)-Y(i-1)	[2]*[3]	[1]*[4]	方向角	夾 角	距 離
W50-26	-97441.255	-22.875	-2349.683	-1.490	53748.642916	145188.726397	106-33-16	90-00-00	5.089
W50-27	-97442.705	19.975	-2344.805	11.247	-46836.649894	-1095925.763890	16-33-16	90-00-00	22.351
W50-44	-97421.280	22.875	-2338.437	1.490	-53491.372436	-145158.963916	286-33-16	90-00-00	5.089
W50-42	-97419.830	-19.975	-2343.315	-11.247	46806.887414	1095668.493409	196-33-16	90-00-00	22.351
合計				倍面積	227.507999	-227.507999			54.880
				面 積	113.7539999	113.7539999			

面積（座標法）計算書

地番：W50-10-1

測点名	[1] X(i)	[2] X(i+1)-X(i-1)	[3] Y(i)	[4] Y(i+1)-Y(i-1)	[2]*[3]	[1]*[4]	方向角	夾角	距離
W50-25	-97438.214	-24.466	-2359.914	3.862	57736.765408	-376277.627494	106-33-16	90-00-00	10.673
W50-26	-97441.255	18.384	-2349.683	16.599	-43196.259309	-1617387.561432	16-33-16	90-00-00	22.351
W50-42	-97419.830	24.466	-2343.315	-3.862	-57330.670463	376206.634439	286-33-16	90-00-00	10.673
W50-41	-97416.789	-18.384	-2353.545	-16.599	43267.252365	1616981.466487	196-33-16	90-00-00	22.351
合計				倍面積	477.088000	-477.088000			66.048
				面積	238.5440004	238.5440004			

面積（座標法）計算書

地番：W50-10-2

測点名	[1] X(i)	[2] X(i+1)-X(i-1)	[3] Y(i)	[4] Y(i+1)-Y(i-1)	[2]*[3]	[1]*[4]	方向角	夾角	距離
W50-24	-97435.173	-24.466	-2370.144	3.862	57987.052160	-376265.884507	106-33-16	90-00-00	10.673
W50-25	-97438.214	18.384	-2359.914	16.599	-43384.329191	-1617337.087078	16-33-16	90-00-00	22.351
W50-41	-97416.789	24.466	-2353.545	-3.862	-57580.957217	376194.891450	286-33-16	90-00-00	10.673
W50-39	-97413.748	-18.384	-2363.775	-16.599	43455.322247	1616930.992134	196-33-16	90-00-00	22.351
合計				倍面積	477.087999	-477.087999			66.048
				面積	238.5439998	238.5439998			

面積（座標法）計算書

地番：W50-10-3

測点名	[1] X(i)	[2] X(i+1)-X(i-1)	[3] Y(i)	[4] Y(i+1)-Y(i-1)	[2]*[3]	[1]*[4]	方向角	夾角	距離
W50-24	-97435.173	18.384	-2370.144	16.599	-43572.247604	-1617307.504534	16-33-16	90-00-00	22.351
W50-39	-97413.748	24.466	-2363.775	-3.862	-57831.395032	376204.035678	286-33-16	90-00-00	10.673
W50-37	-97410.707	-18.384	-2374.006	-16.599	43643.244356	1616901.403286	196-33-16	90-00-00	22.351
W50-23	-97432.132	-24.466	-2380.374	3.862	58237.496280	-376275.032430	106-33-16	90-00-00	10.673
合計				倍面積	477.098000	-477.098000			66.048
				面積	238.5490000	238.5490000			



面積（座標法）計算書

地番：W50-11

測点名	[1] X(i)	[2] X(i+1)-X(i-1)	[3] Y(i)	[4] Y(i+1)-Y(i-1)	[2]*[3]	[1]*[4]	方向角	夾角	距離
W50-37	-97410.707	22.144	-2374.006	3.949	-52569.574876	-384703.971198	286-33-16	90-00-00	2.524
W50-36	-97409.988	-20.706	-2376.425	-8.788	49205.447387	855998.821284	196-33-16	90-00-00	22.351
W50-22	-97431.413	-22.144	-2382.793	-3.949	52764.165717	384785.744038	106-33-16	90-00-00	2.524
W50-23	-97432.132	20.706	-2380.374	8.788	-49287.220227	-856193.412125	16-33-16	90-00-00	22.351
合計				倍面積 面積	112.818000 56.4090002	-112.818000 56.4090002			49.750

# 面積（座標法）計算書

地 番： W50-12

測点名	[1] X(i)	[2] X(i+1)-X(i-1)	[3] Y(i)	[4] Y(i+1)-Y(i-1)	[2]*[3]	[1]*[4]	方向角	夾 角	距 離
W50-36	-97409.988	31.181	-2376.425	-26.454	-74099.376482	2576854.563136	286-33-16	90-00-00	34.241
W50-21	-97400.232	-9.635	-2409.247	-38.583	23213.568748	3758027.097638	196-32-48	89-59-32	20.229
W50-3	-97419.623	-22.030	-2415.008	-4.332	53202.473123	422066.630874	151-33-51	135-01-03	3.000
W50-4	-97422.262	-11.790	-2413.579	32.215	28455.010742	-3138448.945975	106-33-16	134-59-25	32.117
W50-22	-97431.413	12.274	-2382.793	37.155	-29245.567694	-3620025.454111	16-33-16	90-00-00	22.351
合計				倍面積	1526.108437	-1526.108437			111.938
				面 積	763.0542190	763.0542190			