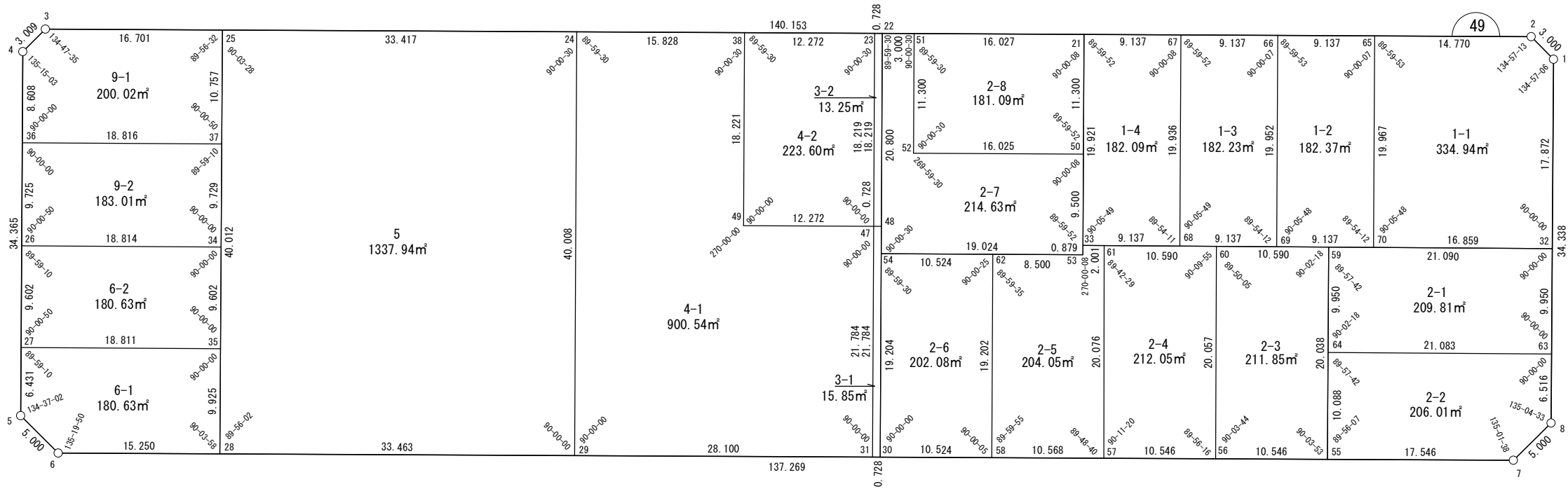


座 標 一 覧 表

測 点 名	X 座 標	Y 座 標	測 点 名	X 座 標	Y 座 標	測 点 名	X 座 標	Y 座 標	測 点 名	X 座 標	Y 座 標
W49-1	-97413.940	-2287.171	W49-25	-97533.765	-2324.784	W49-37	-97536.823	-2314.471	W49-57	-97465.171	-2262.810
W49-2	-97415.371	-2289.807	W49-26	-97557.626	-2310.492	W49-38	-97486.538	-2310.832	W49-58	-97475.306	-2265.803
W49-3	-97549.781	-2329.516	W49-27	-97560.354	-2301.286	W49-47	-97479.928	-2289.881	W49-59	-97439.247	-2276.048
W49-4	-97552.419	-2328.069	W49-28	-97545.140	-2286.423	W49-48	-97479.230	-2289.675	W49-60	-97449.399	-2279.066
W49-5	-97562.180	-2295.119	W49-29	-97513.047	-2276.946	W49-49	-97491.698	-2293.357	W49-61	-97459.550	-2282.083
W49-6	-97559.766	-2290.741	W49-30	-97486.097	-2268.989	W49-50	-97459.025	-2290.921	W49-62	-97469.868	-2284.219
W49-7	-97428.116	-2251.869	W49-31	-97485.399	-2268.783	W49-51	-97471.194	-2306.299	W49-63	-97421.866	-2260.502
W49-8	-97423.723	-2254.256	W49-32	-97419.032	-2270.040	W49-52	-97474.394	-2295.461	W49-64	-97442.076	-2266.509
W49-21	-97455.824	-2301.758	W49-33	-97461.467	-2282.653	W49-53	-97461.716	-2281.810	W49-65	-97429.536	-2293.992
W49-22	-97474.071	-2307.149	W49-34	-97539.589	-2305.143	W49-54	-97479.961	-2287.200	W49-66	-97438.298	-2296.581
W49-23	-97474.769	-2307.355	W49-35	-97542.319	-2295.938	W49-55	-97444.944	-2256.837	W49-67	-97447.061	-2299.169
W49-24	-97501.717	-2315.316	W49-36	-97554.864	-2319.816	W49-56	-97455.058	-2259.824	W49-68	-97452.709	-2280.050
									W49-69	-97443.950	-2277.446
									W49-70	-97435.192	-2274.843



世界測地系



面積一覧表

地番名	地積	地番名	地積
W49-1-1	334.94 m <sup>2</sup>	W49-4-1	900.54 m <sup>2</sup>
W49-1-2	182.37 m <sup>2</sup>	W49-4-2	223.60 m <sup>2</sup>
W49-1-3	182.23 m <sup>2</sup>	W49-5	1337.94 m <sup>2</sup>
W49-1-4	182.09 m <sup>2</sup>	W49-6-1	180.63 m <sup>2</sup>
W49-2-1	209.81 m <sup>2</sup>	W49-6-2	180.63 m <sup>2</sup>
W49-2-2	206.01 m <sup>2</sup>	W49-9-1	200.02 m <sup>2</sup>
W49-2-3	211.85 m <sup>2</sup>	W49-9-2	183.01 m <sup>2</sup>
W49-2-4	212.05 m <sup>2</sup>	合計	5758.67 m <sup>2</sup>
W49-2-5	204.05 m <sup>2</sup>		
W49-2-6	202.08 m <sup>2</sup>		
W49-2-7	214.63 m <sup>2</sup>		
W49-2-8	181.09 m <sup>2</sup>		
W49-3-1	15.85 m <sup>2</sup>		
W49-3-2	13.25 m <sup>2</sup>		

株式会社  
オオバ  
名古屋支店

豊田浄水特定土地区画整理組合

# 面積（座標法）計算書

地番：W49-1-1

測点名	[1] X(i)	[2] X(i+1)-X(i-1)	[3] Y(i)	[4] Y(i+1)-Y(i-1)	[2]*[3]	[1]*[4]	方向角	夾角	距離
W49-1	-97413.940	3.661	-2287.171	-19.767	-8372.669520	1925622.074100	241-30-19	134-57-06	3.000
W49-2	-97415.371	-15.596	-2289.807	-6.821	35711.568259	664483.253999	196-27-32	134-57-13	14.770
W49-65	-97429.536	-19.821	-2293.992	14.964	45469.569104	-1457937.692972	106-27-25	89-59-53	19.967
W49-70	-97435.192	10.504	-2274.843	23.952	-23894.985834	-2333778.879286	16-33-13	90-05-48	16.859
W49-32	-97419.032	21.252	-2270.040	-12.328	-48243.599527	1200941.361678	286-33-13	90-00-00	17.872
合計				倍面積	669.882480	-669.882480			72.468
				面積	334.9412403	334.9412403			

# 面積（座標法）計算書

地番：W49-1-2

測点名	[1] X(i)	[2] X(i+1)-X(i-1)	[3] Y(i)	[4] Y(i+1)-Y(i-1)	[2]*[3]	[1]*[4]	方向角	夾角	距離
W49-65	-97429.536	-3.106	-2293.992	-21.738	7125.970039	2117876.218799	196-27-32	90-00-07	9.137
W49-66	-97438.298	-14.415	-2296.581	16.545	33105.038696	-1612157.181757	106-27-25	89-59-53	19.952
W49-69	-97443.950	3.106	-2277.446	21.738	-7074.573979	-2118189.563502	16-33-13	90-05-48	9.137
W49-70	-97435.192	14.415	-2274.843	-16.545	-32791.693993	1612105.785697	286-27-25	89-54-12	19.967
合計				倍面積	364.740763	-364.740763			58.193
				面積	182.3703817	182.3703817			

# 面積（座標法）計算書

地番：W49-1-3

測点名	[1] X(i)	[2] X(i+1)-X(i-1)	[3] Y(i)	[4] Y(i+1)-Y(i-1)	[2]*[3]	[1]*[4]	方向角	夾角	距離
W49-66	-97438.298	-3.111	-2296.581	-21.723	7143.661608	2116650.780306	196-27-32	90-00-07	9.137
W49-67	-97447.061	-14.411	-2299.169	16.531	33132.254050	-1610891.654337	106-27-24	89-59-52	19.936
W49-68	-97452.709	3.111	-2280.050	21.723	-7092.241051	-2116963.820098	16-33-13	90-05-49	9.137
W49-69	-97443.950	14.411	-2277.446	-16.531	-32819.214259	1610840.233780	286-27-25	89-54-12	19.952
合計				倍面積	364.460348	-364.460348			58.162
				面積	182.2301743	182.2301743			

# 面積（座標法）計算書

地番：W49-1-4

測点名	[1] X(i)	[2] X(i+1)-X(i-1)	[3] Y(i)	[4] Y(i+1)-Y(i-1)	[2]*[3]	[1]*[4]	方向角	夾角	距離
W49-67	-97447.061	-3.115	-2299.169	-21.708	7161.595233	2115427.861446	196-27-32	90-00-08	9.137
W49-21	-97455.824	-14.406	-2301.758	16.516	33159.667403	-1609623.112074	106-27-24	89-59-52	19.921
W49-33	-97461.467	3.115	-2282.653	21.708	-7110.148806	-2115740.598946	16-33-13	90-05-49	9.137
W49-68	-97452.709	14.406	-2280.050	-16.516	-32846.929902	1609571.665647	286-27-24	89-54-11	19.936
合計				倍面積	364.183927	-364.183927			58.131
				面積	182.0919635	182.0919635			

# 面積（座標法）計算書

地番：W49-2-1

測点名	[1] X(i)	[2] X(i+1)-X(i-1)	[3] Y(i)	[4] Y(i+1)-Y(i-1)	[2]*[3]	[1]*[4]	方向角	夾角	距離
W49-59	-97439.247	-23.044	-2276.048	3.531	52450.121259	-344028.960690	106-30-55	89-57-42	9.950
W49-64	-97442.076	17.381	-2266.509	15.546	-39394.225995	-1514874.629215	16-33-13	90-02-18	21.083
W49-63	-97421.866	23.044	-2260.502	-3.531	-52091.863868	343967.593502	286-33-13	90-00-00	9.950
W49-32	-97419.032	-17.381	-2270.040	-15.546	39455.593182	1514516.371824	196-33-13	90-00-00	21.090
合計				倍面積	419.624578	-419.624578			62.073
				面積	209.8122892	209.8122892			

# 面積（座標法）計算書

地番：W49-2-2

測点名	[1] X(i)	[2] X(i+1)-X(i-1)	[3] Y(i)	[4] Y(i+1)-Y(i-1)	[2]*[3]	[1]*[4]	方向角	夾角	距離
W49-64	-97442.076	-23.077	-2266.509	3.665	52304.645424	-357107.041467	106-30-55	89-57-42	10.088
W49-55	-97444.944	13.960	-2256.837	14.640	-31504.709218	-1426635.899653	16-27-02	89-56-07	17.546
W49-7	-97428.116	21.221	-2251.869	2.581	-47786.214967	-251473.779681	331-28-40	135-01-38	5.000
W49-8	-97423.723	6.250	-2254.256	-8.634	-14088.709140	841110.117879	286-33-13	135-04-33	6.516
W49-63	-97421.866	-18.353	-2260.502	-12.253	41487.015371	1193694.575453	196-33-13	90-00-00	21.083
合計				倍面積 面積	412.027469 206.0137348	-412.027469 206.0137348			60.233

# 面積（座標法）計算書

地番：W49-2-3

測点名	[1] X(i)	[2] X(i+1)-X(i-1)	[3] Y(i)	[4] Y(i+1)-Y(i-1)	[2]*[3]	[1]*[4]	方向角	夾角	距離
W49-60	-97449.399	-15.810	-2279.066	16.225	36032.205988	-1581100.238952	106-23-18	89-50-05	20.057
W49-56	-97455.058	4.455	-2259.824	22.228	-10067.316056	-2166274.709945	16-27-02	90-03-44	10.546
W49-55	-97444.944	15.810	-2256.837	-16.225	-35680.772487	1581027.958743	286-30-55	90-03-53	20.038
W49-59	-97439.247	-4.455	-2276.048	-22.228	10139.596266	2165923.276443	196-33-13	90-02-18	10.590
合計				倍面積	423.713710	-423.713710			61.231
				面積	211.8568555	211.8568555			



# 面積（座標法）計算書

地番：W49-2-4

測点名	[1] X(i)	[2] X(i+1)-X(i-1)	[3] Y(i)	[4] Y(i+1)-Y(i-1)	[2]*[3]	[1]*[4]	方向角	夾角	距離
W49-61	-97459.550	-15.773	-2282.083	16.256	35995.075238	-1584269.716198	106-15-42	89-42-29	20.076
W49-57	-97465.171	4.492	-2262.810	22.259	-10164.737009	-2169504.477414	16-27-02	90-11-20	10.546
W49-56	-97455.058	15.773	-2259.824	-16.256	-35643.981754	1584196.694358	286-23-18	89-56-16	20.057
W49-60	-97449.399	-4.492	-2279.066	-22.259	10237.758850	2169153.383930	196-33-13	90-09-55	10.590
合計				倍面積	424.115325	-424.115325			61.269
				面積	212.0576626	212.0576626			

# 面積（座標法）計算書

地番：W49-2-5

測点名	[1] X(i)	[2] X(i+1)-X(i-1)	[3] Y(i)	[4] Y(i+1)-Y(i-1)	[2]*[3]	[1]*[4]	方向角	夾角	距離
W49-62	-97469.868	-13.590	-2284.219	16.008	31043.037519	-1560255.363466	106-27-07	89-59-35	19.202
W49-58	-97475.306	4.697	-2265.803	21.409	-10641.986761	-2086804.007932	16-27-02	89-59-55	10.568
W49-57	-97465.171	15.757	-2262.810	-16.280	-35654.712957	1586758.831408	286-15-42	89-48-40	20.076
W49-61	-97459.550	3.704	-2282.083	-19.843	-8453.155063	1933878.458242	196-33-13	90-17-31	2.001
W49-33	-97461.467	-2.167	-2282.653	0.273	4945.614003	-26577.641915	106-27-24	89-54-11	0.879
W49-53	-97461.716	-8.401	-2281.810	-1.566	19169.315799	152591.611124	196-27-32	270-00-08	8.500
合計				倍面積	408.112539	-408.112539			61.226
				面積	204.0562699	204.0562699			

# 面積（座標法）計算書

地番：W49-2-6

測点名	[1] X(i)	[2] X(i+1)-X(i-1)	[3] Y(i)	[4] Y(i+1)-Y(i-1)	[2]*[3]	[1]*[4]	方向角	夾角	距離
W49-54	-97479.961	-15.531	-2287.200	15.436	35522.513485	-1504677.743110	106-27-02	89-59-30	19.204
W49-31	-97485.399	4.655	-2268.783	21.398	-10560.149731	-2085956.749875	16-27-02	90-00-00	10.524
W49-58	-97475.306	15.531	-2265.803	-15.436	-35190.186796	1504605.896661	286-27-07	90-00-05	19.202
W49-62	-97469.868	-4.655	-2284.219	-21.398	10631.996180	2085624.423186	196-27-32	90-00-25	10.524
合計				倍面積	404.173138	-404.173138			59.454
				面積	202.0865692	202.0865692			

# 面積（座標法）計算書

地 番： W49-2-7

測点名	[1] X(i)	[2] X(i+1)-X(i-1)	[3] Y(i)	[4] Y(i+1)-Y(i-1)	[2]*[3]	[1]*[4]	方向角	夾 角	距 離
W49-22	-97474.071	-8.767	-2307.149	19.099	20227.676219	-1861614.536944	106-27-02	89-59-30	20.800
W49-54	-97479.961	12.354	-2287.200	25.339	-28257.093887	-2470006.084903	16-27-32	90-00-30	19.024
W49-53	-97461.716	20.936	-2281.810	-3.721	-47772.059627	362631.185411	286-27-24	89-59-52	9.500
W49-50	-97459.025	-12.677	-2290.921	-13.651	29042.932385	1330432.783762	196-27-32	90-00-08	16.025
W49-52	-97474.394	-12.169	-2295.461	-15.378	27932.653475	1498942.350042	286-27-02	269-59-30	11.300
W49-51	-97471.194	0.323	-2306.299	-11.687	-744.837007	1139185.031073	196-27-32	90-00-30	3.000
合計				倍面積	429.271558	-429.271558			79.649
				面 積	214.6357791	214.6357791			

面積（座標法）計算書

地番：W49-2-8

測点名	[1] X(i)	[2] X(i+1)-X(i-1)	[3] Y(i)	[4] Y(i+1)-Y(i-1)	[2]*[3]	[1]*[4]	方向角	夾角	距離
W49-51	-97471.194	-18.570	-2306.299	6.297	42827.664288	-613747.116604	106-27-02	89-59-30	11.300
W49-52	-97474.394	12.169	-2295.461	15.378	-27932.653475	-1498942.350042	16-27-32	90-00-30	16.025
W49-50	-97459.025	18.570	-2290.921	-6.297	-42542.100457	613670.494270	286-27-24	89-59-52	11.300
W49-21	-97455.824	-12.169	-2301.758	-15.378	28009.275809	1498656.786210	196-27-32	90-00-08	16.027
合計				倍面積	362.186166	-362.186166			54.652
				面積	181.0930831	181.0930831			

# 面積（座標法）計算書

地番：W49-3-1

測点名	[1] X(i)	[2] X(i+1)-X(i-1)	[3] Y(i)	[4] Y(i+1)-Y(i-1)	[2]*[3]	[1]*[4]	方向角	夾角	距離
W49-48	-97479.230	5.471	-2289.675	-21.099	-12526.978726	2056671.524776	196-27-02	90-00-00	0.728
W49-47	-97479.928	-6.867	-2289.881	20.686	15724.631001	-2016506.412854	106-27-02	90-00-00	21.784
W49-30	-97486.097	-5.471	-2268.989	21.099	12413.802070	-2056816.408743	16-27-02	90-00-00	0.728
W49-31	-97485.399	6.867	-2268.783	-20.686	-15579.747034	2016619.589510	286-27-02	90-00-00	21.784
合計				倍面積	31.707311	-31.707311			45.024
				面積	15.8536556	15.8536556			

# 面積（座標法）計算書

地番：W49-3-2

測点名	[1] X(i)	[2] X(i+1)-X(i-1)	[3] Y(i)	[4] Y(i+1)-Y(i-1)	[2]*[3]	[1]*[4]	方向角	夾角	距離
W49-22	-97474.071	4.462	-2307.149	-17.680	-10293.522919	1723316.258651	196-27-32	90-00-30	0.728
W49-23	-97474.769	-5.857	-2307.355	17.267	13515.291822	-1683141.187938	106-27-02	89-59-30	18.219
W49-47	-97479.928	-4.462	-2289.881	17.680	10216.482832	-1723419.817423	16-27-02	90-00-00	0.728
W49-48	-97479.230	5.857	-2289.675	-17.267	-13411.733050	1683218.228025	286-27-02	90-00-00	18.219
合計				倍面積	26.518685	-26.518685			37.894
				面積	13.2593425	13.2593425			

# 面積（座標法）計算書

地 番： W49-4-1

測点名	[1] X(i)	[2] X(i+1)-X(i-1)	[3] Y(i)	[4] Y(i+1)-Y(i-1)	[2]*[3]	[1]*[4]	方向角	夾 角	距 離
W49-38	-97486.538	-10.019	-2310.832	-21.960	23152.196440	2140772.954915	196-27-32	90-00-30	15.828
W49-24	-97501.717	-26.509	-2315.316	33.886	61376.135187	-3303904.847139	106-27-02	89-59-30	40.008
W49-29	-97513.047	15.620	-2276.946	46.328	-35565.483654	-4517536.041719	16-27-02	90-00-00	28.100
W49-30	-97486.097	33.119	-2268.989	-12.935	-75145.677202	1260975.259915	286-27-02	90-00-00	21.784
W49-47	-97479.928	-5.601	-2289.881	-24.368	12825.232966	2375373.935607	196-27-02	90-00-00	12.272
W49-49	-97491.698	-6.610	-2293.357	-20.951	15158.693211	2042517.641471	286-27-02	270-00-00	18.221
合計				倍面積	1801.096949	-1801.096949			136.213
				面 積	900.5484750	900.5484750			



# 面積（座標法）計算書

地番：W49-4-2

測点名	[1] X(i)	[2] X(i+1)-X(i-1)	[3] Y(i)	[4] Y(i+1)-Y(i-1)	[2]*[3]	[1]*[4]	方向角	夾角	距離
W49-38	-97486.538	-16.929	-2310.832	13.998	39121.029560	-1364644.820958	106-27-02	89-59-30	18.221
W49-49	-97491.698	6.610	-2293.357	20.951	-15158.693211	-2042517.641471	16-27-02	90-00-00	12.272
W49-47	-97479.928	16.929	-2289.881	-13.998	-38766.346800	1364552.294671	286-27-02	90-00-00	18.219
W49-23	-97474.769	-6.610	-2307.355	-20.951	15251.219499	2042162.958711	196-27-32	90-00-30	12.272
合計				倍面積	447.209048	-447.209048			60.984
				面積	223.6045241	223.6045241			

面積（座標法）計算書

地番：W49-5

測点名	[1] X(i)	[2] X(i+1)-X(i-1)	[3] Y(i)	[4] Y(i+1)-Y(i-1)	[2]*[3]	[1]*[4]	方向角	夾角	距離
W49-24	-97501.717	-20.718	-2315.316	-47.838	47968.806691	4664272.853112	196-27-32	90-00-30	33.417
W49-25	-97533.765	-43.423	-2324.784	28.894	100949.384587	-2818097.293382	106-31-00	90-03-28	40.012
W49-28	-97545.140	20.718	-2286.423	47.838	-47370.188975	-4666350.121927	16-27-02	89-56-02	33.463
W49-29	-97513.047	43.423	-2276.946	-28.894	-98872.115772	2817498.675666	286-27-02	90-00-00	40.008
合計				倍面積	2675.886530	-2675.886530			146.900
				面積	1337.9432654	1337.9432654			

# 面積（座標法）計算書

地 番： W49-6-1

測点名	[1] X(i)	[2] X(i+1)-X(i-1)	[3] Y(i)	[4] Y(i+1)-Y(i-1)	[2]*[3]	[1]*[4]	方向角	夾 角	距 離
W49-27	-97560.354	-19.862	-2301.286	0.818	45707.928282	-79845.442174	106-30-10	89-59-10	6.431
W49-5	-97562.180	0.588	-2295.119	10.544	-1349.451983	-1028738.870738	61-07-12	134-37-02	5.000
W49-6	-97559.766	17.040	-2290.741	8.697	-39035.138206	-848442.628711	16-27-02	135-19-50	15.250
W49-28	-97545.140	17.447	-2286.423	-5.196	-39891.376518	506892.706015	286-31-00	90-03-58	9.925
W49-35	-97542.319	-15.214	-2295.938	-14.863	34929.300426	1449772.973609	196-31-00	90-00-00	18.811
合計				倍面積	361.262000	-361.262000			55.417
				面 積	180.6310000	180.6310000			

# 面積（座標法）計算書

地番：W49-6-2

測点名	[1] X(i)	[2] X(i+1)-X(i-1)	[3] Y(i)	[4] Y(i+1)-Y(i-1)	[2]*[3]	[1]*[4]	方向角	夾角	距離
W49-26	-97557.626	-20.765	-2310.492	3.858	47976.786146	-376332.347706	106-30-10	89-59-10	9.602
W49-27	-97560.354	15.308	-2301.286	14.554	-35227.120516	-1419903.962206	16-31-00	90-00-50	18.811
W49-35	-97542.319	20.765	-2295.938	-3.858	-47674.573740	376273.298113	286-31-00	90-00-00	9.602
W49-34	-97539.589	-15.308	-2305.143	-14.554	35286.170109	1419601.749800	196-31-00	90-00-00	18.814
合計				倍面積	361.261999	-361.261999			56.829
				面積	180.6309995	180.6309995			

# 面積（座標法）計算書

地番：W49-9-1

測点名	[1] X(i)	[2] X(i+1)-X(i-1)	[3] Y(i)	[4] Y(i+1)-Y(i-1)	[2]*[3]	[1]*[4]	方向角	夾角	距離
W49-37	-97536.823	21.099	-2314.471	-4.968	-48833.168238	484587.734998	286-31-00	90-00-50	10.757
W49-25	-97533.765	-12.958	-2324.784	-15.045	30124.909408	1467379.464484	196-27-32	89-56-32	16.701
W49-3	-97549.781	-18.654	-2329.516	-3.285	43454.779780	320426.028753	151-15-07	134-47-35	3.009
W49-4	-97552.419	-5.083	-2328.069	9.700	11832.984444	-946255.257213	106-30-10	135-15-03	8.608
W49-36	-97554.864	15.596	-2319.816	13.598	-36179.463255	-1326538.013162	16-30-10	90-00-00	18.816
合計				倍面積	400.042140	-400.042140			57.891
				面積	200.0210701	200.0210701			

# 面積（座標法）計算書

地番：W49-9-2

測点名	[1] X(i)	[2] X(i+1)-X(i-1)	[3] Y(i)	[4] Y(i+1)-Y(i-1)	[2]*[3]	[1]*[4]	方向角	夾角	距離
W49-36	-97554.864	-20.803	-2319.816	3.979	48259.760878	-388185.749686	106-30-10	90-00-00	9.725
W49-26	-97557.626	15.275	-2310.492	14.673	-35292.589221	-1431428.088960	16-31-00	90-00-50	18.814
W49-34	-97539.589	20.803	-2305.143	-3.979	-47954.521940	388124.968423	286-31-00	90-00-00	9.729
W49-37	-97536.823	-15.275	-2314.471	-14.673	35353.370484	1431122.850022	196-30-10	89-59-10	18.816
合計				倍面積	366.020200	-366.020200			57.084
				面積	183.0101000	183.0101000			