

世界測地系

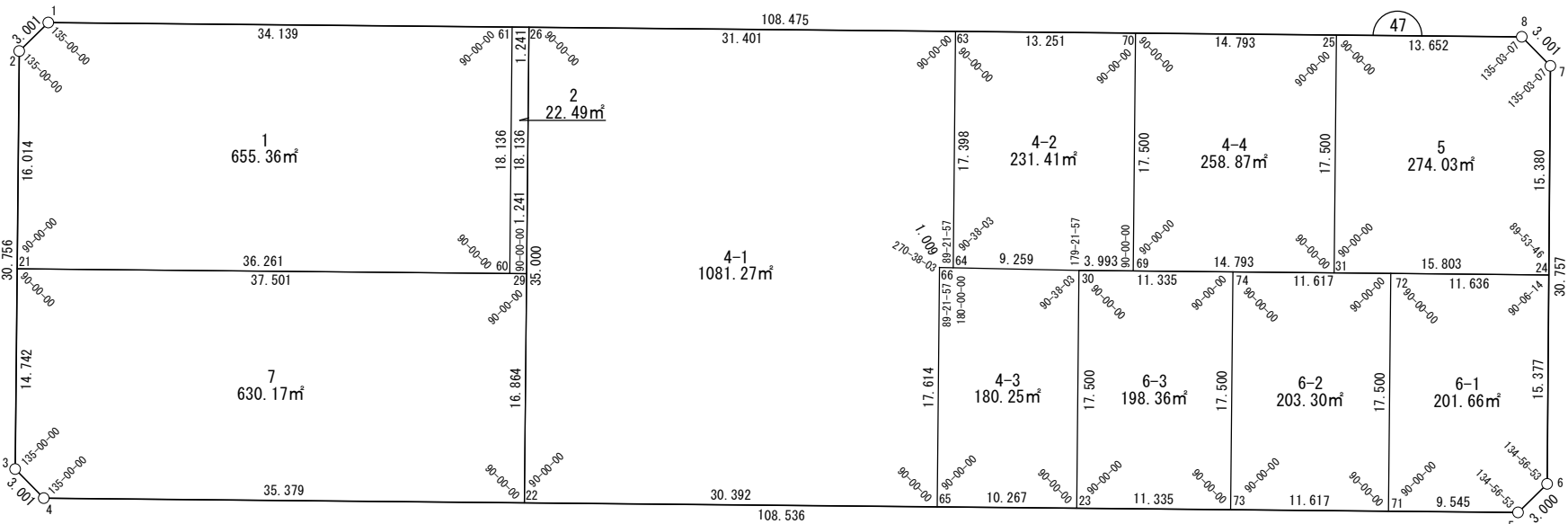
面積一覧表

地番名	地積
W47-1	655.36㎡
W47-2	22.49㎡
W47-4-1	1081.27㎡
W47-4-2	231.41㎡
W47-4-3	180.25㎡
W47-4-4	258.87㎡
W47-5	274.03㎡
W47-6-1	201.66㎡
W47-6-2	203.30㎡
W47-6-3	198.36㎡
W47-7	630.17㎡
合計	3937.17㎡

座 標 一 覧 表

測 点 名	X 座 標	Y 座 標
W47-1	-97335.031	-2387.661
W47-2	-97336.461	-2390.299
W47-3	-97365.942	-2399.063
W47-4	-97368.580	-2397.633
W47-5	-97399.505	-2293.596
W47-6	-97398.074	-2290.960
W47-7	-97368.576	-2282.250
W47-8	-97365.939	-2283.682
W47-21	-97351.811	-2394.862
W47-22	-97378.661	-2363.721
W47-23	-97390.246	-2324.747
W47-24	-97383.327	-2286.606
W47-25	-97362.049	-2296.768
W47-26	-97345.112	-2353.748
W47-29	-97362.496	-2358.915

測 点 名	X 座 標	Y 座 標
W47-30	-97373.471	-2319.761
W47-31	-97378.824	-2301.754
W47-60	-97362.142	-2360.105
W47-61	-97344.758	-2354.937
W47-63	-97354.059	-2323.648
W47-64	-97370.735	-2328.606
W47-65	-97387.321	-2334.588
W47-66	-97370.437	-2329.569
W47-69	-97374.609	-2315.933
W47-70	-97357.834	-2310.947
W47-71	-97396.786	-2302.746
W47-72	-97380.011	-2297.760
W47-73	-97393.475	-2313.882
W47-74	-97376.701	-2308.895



50

面積（座標法）計算書

地番：W47-1

測点名	[1] X(i)	[2] X(i+1)-X(i-1)	[3] Y(i)	[4] Y(i+1)-Y(i-1)	[2]*[3]	[1]*[4]	方向角	夾角	距離
W47-61	-97344.758	27.111	-2354.937	-27.556	-63845.174538	2682456.641301	286-33-17	90-00-00	34.139
W47-1	-97335.031	8.298	-2387.661	-35.362	-19812.082577	3441993.716324	241-33-17	135-00-00	3.001
W47-2	-97336.461	-16.779	-2390.299	-7.201	40107.946963	700964.822095	196-33-17	135-00-00	16.014
W47-21	-97351.811	-25.682	-2394.862	30.195	61504.325001	-2939529.218585	106-33-17	90-00-00	36.261
W47-60	-97362.142	7.052	-2360.105	39.925	-16644.278849	-3887196.697136	16-33-17	90-00-00	18.136
合計				倍面積	1310.735999	-1310.735999			107.551
				面積	655.3679997	655.3679997			

面積（座標法）計算書

地番：W47-2

測点名	[1] X(i)	[2] X(i+1)-X(i-1)	[3] Y(i)	[4] Y(i+1)-Y(i-1)	[2]*[3]	[1]*[4]	方向角	夾角	距離
W47-60	-97362.142	-17.738	-2360.105	-3.978	41862.462931	387337.368750	106-33-17	90-00-00	1.241
W47-29	-97362.496	17.031	-2358.915	6.357	-40173.797856	-618887.372432	16-33-17	90-00-00	18.136
W47-26	-97345.112	17.738	-2353.748	3.978	-41749.713736	-387269.615554	286-33-17	90-00-00	1.241
W47-61	-97344.758	-17.031	-2354.937	-6.357	40106.044660	618774.623237	196-33-17	90-00-00	18.136
合計				倍面積	44.995999	-44.995999			38.754
				面積	22.4979996	22.4979996			

面積（座標法）計算書

地 番： W47-4-1

測点名	[1] X(i)	[2] X(i+1)-X(i-1)	[3] Y(i)	[4] Y(i+1)-Y(i-1)	[2]*[3]	[1]*[4]	方向角	夾 角	距 離
W47-26	-97345.112	-24.602	-2353.748	-40.072	57906.942993	3900817.759309	196-33-17	90-00-00	35.000
W47-22	-97378.661	-42.209	-2363.721	19.160	99769.763467	-1865785.721895	106-33-17	90-00-00	30.392
W47-65	-97387.321	8.224	-2334.588	34.151	-19199.155046	-3325893.631696	16-33-17	90-00-00	17.614
W47-66	-97370.437	16.585	-2329.569	5.982	-38636.642059	-582509.399920	107-11-20	270-38-03	1.009
W47-64	-97370.735	16.378	-2328.606	5.921	-38138.429495	-576517.320696	16-33-17	89-21-57	17.398
W47-63	-97354.059	25.623	-2323.648	-25.143	-59539.928323	2447725.763364	286-33-17	90-00-00	31.401
合計				倍面積	2162.551534	-2162.551534			132.814
				面 積	1081.2757674	1081.2757674			

面積（座標法）計算書

地 番： W47-4-2

測点名	[1] X(i)	[2] X(i+1)-X(i-1)	[3] Y(i)	[4] Y(i+1)-Y(i-1)	[2]*[3]	[1]*[4]	方向角	夾 角	距 離
W47-63	-97354.059	-12.901	-2323.648	-17.658	29977.167601	1719111.354311	196-33-17	90-00-00	17.398
W47-64	-97370.735	-19.412	-2328.606	3.888	45203.978135	-378574.660131	107-11-20	90-38-03	9.259
W47-30	-97373.471	-3.874	-2319.761	12.672	8986.050696	-1233925.372826	106-33-17	179-21-57	3.993
W47-69	-97374.609	15.637	-2315.933	8.813	-36214.265893	-858193.496597	16-33-17	90-00-00	17.500
W47-70	-97357.834	20.550	-2310.947	-7.715	-47490.110339	751119.355043	286-33-17	90-00-00	13.251
合計				倍面積	462.820200	-462.820200			61.401
				面 積	231.4101001	231.4101001			

面積（座標法）計算書

地番：W47-4-3

測点名	[1] X(i)	[2] X(i+1)-X(i-1)	[3] Y(i)	[4] Y(i+1)-Y(i-1)	[2]*[3]	[1]*[4]	方向角	夾角	距離
W47-65	-97387.321	-19.809	-2334.588	4.823	46245.275890	-469659.424849	106-33-17	90-00-00	10.267
W47-23	-97390.246	13.849	-2324.747	14.827	-32195.914510	-1444046.950577	16-33-17	90-00-00	17.500
W47-30	-97373.471	19.511	-2319.761	-3.859	-45259.952800	375744.492679	287-11-20	90-38-03	9.259
W47-64	-97370.735	3.034	-2328.606	-9.809	-7065.548639	955091.980827	287-11-20	180-00-00	1.009
W47-66	-97370.437	-16.585	-2329.569	-5.982	38636.642059	582509.399920	196-33-17	89-21-57	17.614
合計				倍面積	360.501999	-360.501999			55.649
				面積	180.2510000	180.2510000			

面積（座標法）計算書

地番：W47-4-4

測点名	[1] X(i)	[2] X(i+1)-X(i-1)	[3] Y(i)	[4] Y(i+1)-Y(i-1)	[2]*[3]	[1]*[4]	方向角	夾角	距離
W47-69	-97374.609	-20.989	-2315.933	9.193	48610.235091	-895194.560702	106-33-17	90-00-00	14.793
W47-31	-97378.824	12.560	-2301.754	19.166	-28909.398381	-1866344.233553	16-33-17	90-00-00	17.500
W47-25	-97362.049	20.989	-2296.768	-9.193	-48207.954694	895079.095299	286-33-17	90-00-00	14.793
W47-70	-97357.834	-12.560	-2310.947	-19.166	29024.863783	1865941.953156	196-33-17	90-00-00	17.500
合計				倍面積	517.745799	-517.745799			64.586
				面積	258.8728999	258.8728999			

面積（座標法）計算書

地番：W47-5

測点名	[1] X(i)	[2] X(i+1)-X(i-1)	[3] Y(i)	[4] Y(i+1)-Y(i-1)	[2]*[3]	[1]*[4]	方向角	夾角	距離
W47-7	-97368.576	17.388	-2282.250	2.924	-39683.028397	-284682.708617	331-30-10	135-03-07	3.001
W47-8	-97365.939	6.527	-2283.682	-14.518	-14905.646521	1413517.145729	286-33-17	135-03-07	13.652
W47-25	-97362.049	-12.885	-2296.768	-18.072	29593.484501	1759534.001737	196-33-17	90-00-00	17.500
W47-31	-97378.824	-21.277	-2301.754	10.162	48975.429014	-989569.021505	106-33-17	90-00-00	15.803
W47-24	-97383.327	10.248	-2286.606	19.504	-23432.169100	-1899347.486840	16-27-03	89-53-46	15.380
合計				倍面積	548.069497	-548.069497			65.336
				面積	274.0347486	274.0347486			

面積（座標法）計算書

地番：W47-6-1

測点名	[1] X(i)	[2] X(i+1)-X(i-1)	[3] Y(i)	[4] Y(i+1)-Y(i-1)	[2]*[3]	[1]*[4]	方向角	夾角	距離
W47-6	-97398.074	16.179	-2290.960	6.991	-37064.610013	-680896.241617	16-27-03	134-56-53	15.377
W47-24	-97383.327	18.063	-2286.606	-6.799	-41302.987170	662156.112327	286-33-17	90-06-14	11.636
W47-72	-97380.011	-13.459	-2297.760	-16.140	30925.428233	1571747.407940	196-33-17	90-00-00	17.500
W47-71	-97396.786	-19.494	-2302.746	4.163	44890.190104	-405488.486426	106-33-17	90-00-00	9.545
W47-5	-97399.505	-1.289	-2293.596	11.786	2955.300376	-1147922.113754	61-30-10	134-56-53	3.000
合計				倍面積	403.321530	-403.321530			57.058
				面積	201.6607650	201.6607650			

面積（座標法）計算書

地番：W47-6-2

測点名	[1] X(i)	[2] X(i+1)-X(i-1)	[3] Y(i)	[4] Y(i+1)-Y(i-1)	[2]*[3]	[1]*[4]	方向角	夾角	距離
W47-72	-97380.011	20.085	-2297.760	-6.149	-46149.586940	598835.685479	286-33-17	90-00-00	11.617
W47-74	-97376.701	-13.464	-2308.895	-16.122	31087.947793	1569899.905215	196-33-17	90-00-00	17.500
W47-73	-97393.475	-20.085	-2313.882	6.149	46473.389378	-598918.484585	106-33-17	90-00-00	11.617
W47-71	-97396.786	13.464	-2302.746	16.122	-31005.148687	-1570223.707654	16-33-17	90-00-00	17.500
合計				倍面積	406.601544	-406.601544			58.234
				面積	203.3007721	203.3007721			

面積（座標法）計算書

地番：W47-6-3

測点名	[1] X(i)	[2] X(i+1)-X(i-1)	[3] Y(i)	[4] Y(i+1)-Y(i-1)	[2]*[3]	[1]*[4]	方向角	夾角	距離
W47-74	-97376.701	20.004	-2308.895	-5.879	-46187.533786	572466.455197	286-33-17	90-00-00	11.335
W47-30	-97373.471	-13.545	-2319.761	-15.851	31420.823322	1543499.834932	196-33-17	90-00-00	17.500
W47-23	-97390.246	-20.004	-2324.747	5.879	46504.626635	-572546.083855	106-33-17	90-00-00	11.335
W47-73	-97393.475	13.545	-2313.882	15.851	-31341.194664	-1543816.927781	16-33-17	90-00-00	17.500
合計				倍面積	396.721506	-396.721506			57.670
				面積	198.3607533	198.3607533			

面積（座標法）計算書

地番：W47-7

測点名	[1] X(i)	[2] X(i+1)-X(i-1)	[3] Y(i)	[4] Y(i+1)-Y(i-1)	[2]*[3]	[1]*[4]	方向角	夾角	距離
W47-21	-97351.811	-3.446	-2394.862	-40.147	8252.199504	3908408.296889	196-33-17	90-00-00	14.742
W47-3	-97365.942	-16.770	-2399.063	-2.771	40231.441957	269802.747595	151-33-17	135-00-00	3.001
W47-4	-97368.580	-12.719	-2397.633	35.342	30496.069023	-3441219.876753	106-33-17	135-00-00	35.379
W47-22	-97378.661	6.084	-2363.721	38.718	-14381.944386	-3770291.108493	16-33-17	90-00-00	16.864
W47-29	-97362.496	26.850	-2358.915	-31.142	-63337.420100	3032039.594762	286-33-17	90-00-00	37.501
合計				倍面積	1260.345999	-1260.345999			107.487
				面積	630.1729996	630.1729996			